



Broan FG7T C,L Two Stage Variable Speed Condensing Upflow Horizontal Owner's Manual

[Home](#) » [Broan](#) » Broan FG7T C,L Two Stage Variable Speed Condensing Upflow Horizontal Owner's Manual 

Broan FG7T C,L Two Stage Variable Speed Condensing Upflow Horizontal Owner's Manual



Contents

- [1 FEATURES and BENEFITS](#)
- [2 LOCATION OF FURNACE COMPONENTS](#)
- [3 DIMENSIONS](#)
- [4 MODEL IDENTIFICATION CODE](#)
- [5 SPECIFICATIONS](#)
- [6 ACCESSORIES](#)
- [7 Documents / Resources](#)
 - [7.1 References](#)
- [8 Related Posts](#)

FEATURES and BENEFITS

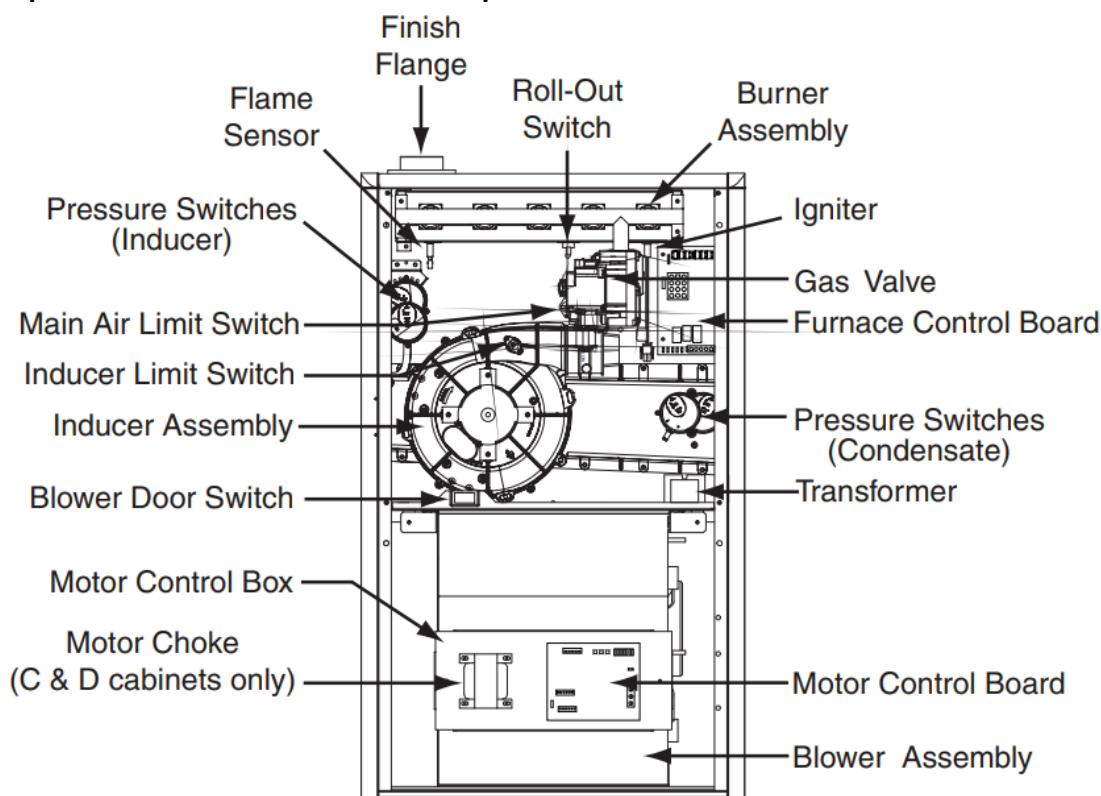
- Energy efficient brushless CM) motor gives to 1 SEER point efficiency gain in cooling.
- 100% fired and tested: All units and each component are tested on the manufacturing line
- Best packaging in the industry: Unique corner post design assures product will arrive to the homeowner dent free
- 30 second blower delay: At start-up assures a warm duct temperature at furnace start-up. Adjustable blower off settings (60, 90, 120 and 180 seconds). 30 second post purge: Increases life of heat exchanger
- Two Stage Inducer: Optimizes efficiency on first stage heat and reduces sound levels
- Hot surface igniter: Innovative application of a silicon nitride type igniter. Utilizes proven Smartlite technology.
- Color coded wire harness: Designed to fit the components, all with quick-connect fittings for ease of service and replacement.
- Flexible category IV venting system: May be vertically or horizontally vented using either a one-pipe or two-

pipe system for maximum flexibility in installation.

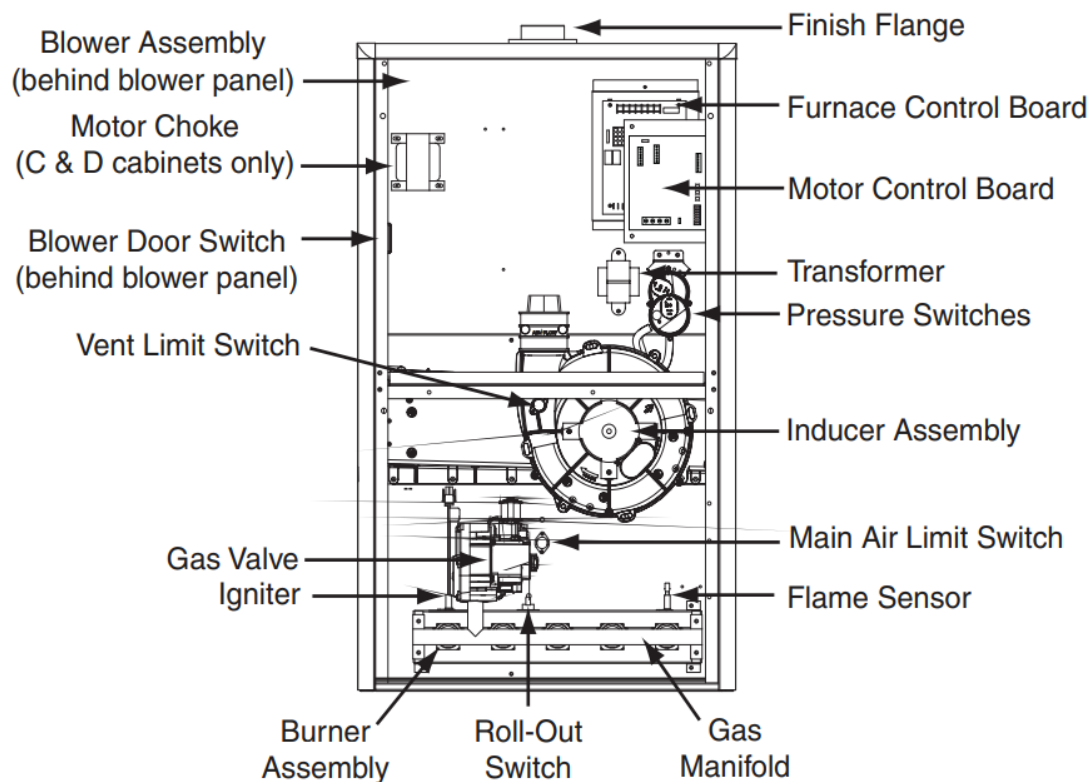
- High Static Blowers: All models equipped with high static blowers.
- Low Boy Height: Easy to apply in low ceiling applications, works well with taller high SEER coils, easier to handle and install
- Tubular primary heat exchanger: Heavy gauge aluminized steel heat exchanger and stainless steel secondary heat exchanger assures a long life
- 90 second fixed cooling cycle blower-off delay (TDR): Increases cooling performance when matched with a NORDYNE cod
- LP convertible: Simple burner orifice and regulator spring change for ease of convertibility
- Diagnostic lights for easy troubleshooting without counting flashes: Dedicated light for flame signal strength and 2 lights in combination to indicate all other fault codes with easy to recognize states without counting flashes •
- Incorporates integrated control board: With connections for electronic air cleaner and humidifier.
- Two piece door design: Enhances furnace appearance and uses captured screws to prevent losing door screws
- Blower Compartment: Sealed door to reduce airleakage and insulated for ultra quiet operation
- Sealed Vestibule: Reduces burner and inducer sound levels

LOCATION OF FURNACE COMPONENTS

Upflow/Horizontal Gas Furnace Components AIR FLOW

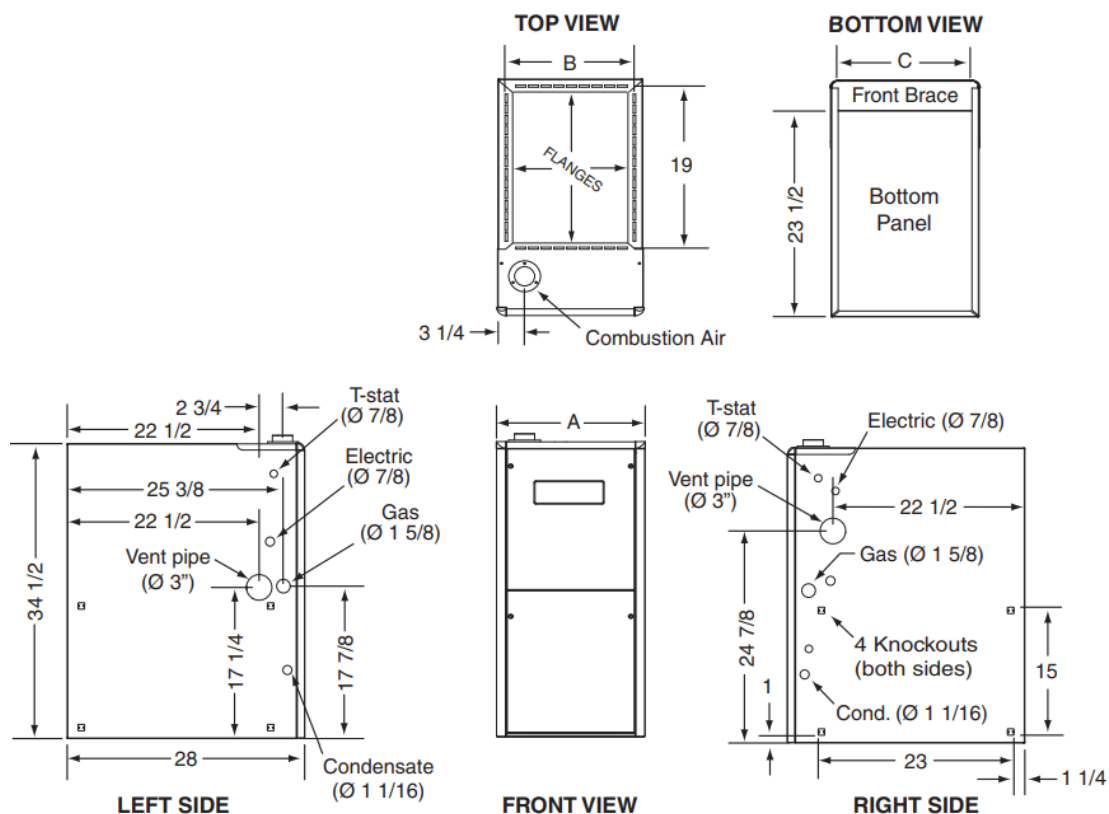


Downflow Gas Furnace Components



DIMENSIONS

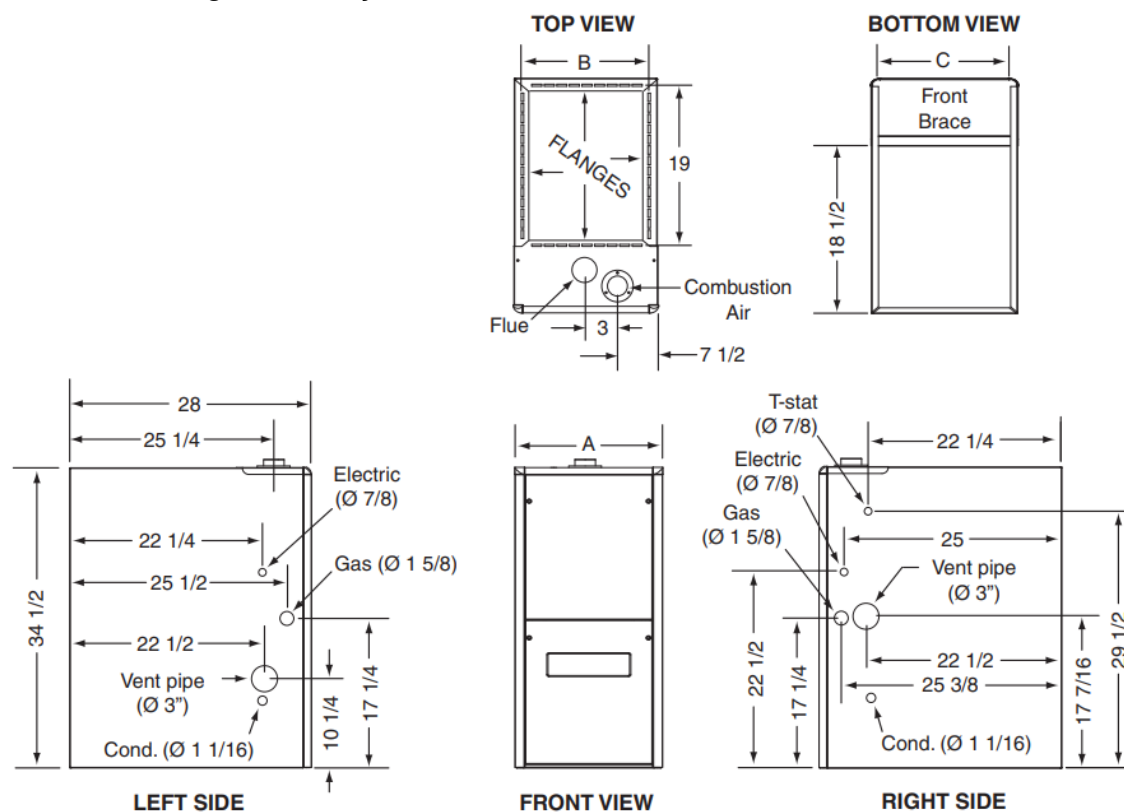
FG7TC 95.1+ High Efficiency Upflow/Horizontal Series



| *TC Model #'s | Dimension "A" | Dimension "B" | Dimension "C" |
|---------------|---------------|---------------|---------------|
| 060D-VB | 17/2 | 1578 | 16/8 |
| 080D-VC | 21 | 193% | 19% |
| 100D-VC | | | |
| 120D-VD | 24 1/2 | 227/8 | 23 18 |

NOTE: Dimensions shown in inches

FG7TL 95.1+ High Efficiency Downflow Series



| *TC Model #'s | Dimension "A" | Dimension "B" | Dimension "C" |
|---------------|---------------|---------------|---------------|
| 060D-VB | 17/2 | 1578 | 16/8 |
| 080D-VC | 21 | 193% | 19% |
| 100D-VC | | | |
| 120D-VD | 24 1/2 | 227/8 | 23 18 |

NOTE: Dimensions shown in inches

BLOWER PERFORMANCE – FG7TC/TL

Nominal Heating Airflows (CFM) and Temperature Rise (°F)

| B Cabinet | | | | *TC/TL-060D-VBModels | |
|---------------------|---|---|---|----------------------|----------------|
| Switch SettingsHEAT | | | | Input (BTU) 60000 | |
| A/B | 2 | 3 | 4 | CFM | Temp Rise (°F) |
| 1 | 0 | 0 | 0 | 1000 | 53 |
| 1 | 0 | 0 | 1 | 1100 | 48 |
| 1 | 0 | 1 | 0 | 1200 | 44 |
| 1 | 0 | 1 | 1 | 1300 | 41 |
| 1 | 1 | 0 | 0 | 1400 | 38 |
| 1 | 1 | 0 | 1 | 1500 | 35 |
| 1 | 1 | 1 | 0 | 1600 | 33 |
| 1 | 1 | 1 | 1 | 1700 | 31 |

| C Cabinet | | | | *TC/TL-080D-VCModels | | *TC/TL-100D-VCModels | |
|---------------------|---|---|---|----------------------|----------------|----------------------|----------------|
| Switch SettingsHEAT | | | | Input (BTU) 80000 | | Input (BTU) 100000 | |
| A/B | 2 | 3 | 4 | CFM | Temp Rise (°F) | CFM | Temp Rise (°F) |
| # | 0 | 0 | 0 | 1000 | 70 | 1000 | 88 |
| # | 0 | 0 | 1 | 1115 | 63 | 1115 | 79 |
| # | 0 | 1 | 0 | 1230 | 57 | 1230 | 72 |
| # | 0 | 1 | 1 | 1345 | 52 | 1345 | 65 |
| # | 1 | 0 | 0 | 1460 | 48 | 1460 | 60 |
| # | 1 | 0 | 1 | 1575 | 45 | 1575 | 56 |
| # | 1 | 1 | 0 | 1690 | 42 | 1690 | 52 |
| # | 1 | 1 | 1 | 1805 | 39 | 1805 | 49 |

#Switch not used – can be 0 or 1

| D Cabinet | | | | *TC/TL-120D-VDM Models | |
|----------------------|---|---|---|------------------------|----------------|
| Switch Settings HEAT | | | | Input (BTU) 120000 | |
| A/B | 2 | 3 | 4 | CFM | Temp Rise (°F) |
| # | 0 | 0 | 0 | 1500 | 70 |
| # | 0 | 0 | 1 | 1615 | 65 |
| # | 0 | 1 | 0 | 1730 | 61 |
| # | 0 | 1 | 1 | 1845 | 57 |
| # | 1 | 0 | 0 | 1960 | 54 |
| # | 1 | 0 | 1 | 2075 | 51 |
| # | 1 | 1 | 0 | 2190 | 48 |
| # | 1 | 1 | 1 | 2305 | 46 |

Notes:

1. Two openings are recommended for airflows above 1600 CFM if the filter(s) is (are) adjacent to the furnace.
2. Temperature rises in the table are approximate. Actual temperature rises may vary.
3. Temperature rises that are shaded in grey are for reference only. These conditions are not recommended.
4. The blower operating range is .1" to .8" ESP in wc.

COOLING AIRFLOW

| A Cabinet | | | | | | | Nominal A/C and HP Capacity | | | |
|-----------------|------|---|---|---|-----|------|-----------------------------|--|--|--|
| Switch Settings | | | | | CFM | | | | | |
| HEAT | COOL | | | | | | | | | |
| A/B | 5 | 6 | 7 | 8 | LOW | HIGH | | | | |
| 0 | 0 | 0 | 0 | 0 | 360 | 525 | 1.5 TON | | | |
| 0 | 0 | 0 | 0 | 1 | 400 | 580 | | | | |
| 0 | 0 | 0 | 1 | 0 | 440 | 635 | | | | |
| 0 | 0 | 0 | 1 | 1 | 475 | 690 | 2 TON | | | |
| 0 | 0 | 1 | 0 | 0 | 515 | 745 | | | | |
| 0 | 0 | 1 | 0 | 1 | 550 | 800 | | | | |
| 0 | 0 | 1 | 1 | 0 | 590 | 855 | | | | |
| 0 | 0 | 1 | 1 | 1 | 630 | 910 | | | | |
| 0 | 1 | 0 | 0 | 0 | 665 | 965 | 2.5 TON | | | |
| 0 | 1 | 0 | 0 | 1 | 705 | 1020 | | | | |
| 0 | 1 | 0 | 1 | 0 | 740 | 1075 | | | | |
| 0 | 1 | 0 | 1 | 1 | 780 | 1130 | 3 TON | | | |
| 0 | 1 | 1 | 0 | 0 | 820 | 1185 | | | | |
| 0 | 1 | 1 | 0 | 1 | 855 | 1240 | | | | |
| 0 | 1 | 1 | 1 | 0 | 895 | 1295 | | | | |
| 0 | 1 | 1 | 1 | 1 | 930 | 1350 | | | | |

| B Cabinet | | | | | | | Nominal A/C and HP Capacity | | | |
|-----------------|------|---|---|---|------|------|-----------------------------|--|-------------|--|
| Switch Settings | | | | | CFM | | | | | |
| HEAT | COOL | | | | | | | | | |
| A/B | 5 | 6 | 7 | 8 | LOW | CFM | | | | |
| 1 | 0 | 0 | 0 | 0 | 485 | 700 | | | 2 TON | |
| 1 | 0 | 0 | 0 | 1 | 525 | 760 | | | | |
| 1 | 0 | 0 | 1 | 0 | 565 | 820 | | | | |
| 1 | 0 | 0 | 1 | 1 | 605 | 880 | | | 2.5 T ON | |
| 1 | 0 | 1 | 0 | 0 | 650 | 940 | | | | |
| 1 | 0 | 1 | 0 | 1 | 690 | 1000 | | | | |
| 1 | 0 | 1 | 1 | 0 | 730 | 1060 | | | 3 TO N | |
| 1 | 0 | 1 | 1 | 1 | 775 | 1120 | | | | |
| 1 | 1 | 0 | 0 | 0 | 815 | 1180 | | | | |
| 1 | 1 | 0 | 0 | 1 | 855 | 1240 | 3.5 T ON | | | |
| 1 | 1 | 0 | 1 | 0 | 895 | 1300 | | | | |
| 1 | 1 | 0 | 1 | 1 | 940 | 1360 | | | | |
| 1 | 1 | 1 | 0 | 0 | 980 | 1420 | | | | |
| 1 | 1 | 1 | 0 | 1 | 1020 | 1480 | | | | |
| 1 | 1 | 1 | 1 | 0 | 1065 | 1540 | | | | |
| 1 | 1 | 1 | 1 | 1 | 1105 | 1600 | | | | |

| C Cabinet | | | | | | | Nominal A/C and HP Capacity | | | | |
|-----------------|------|---|---|---|------|------|-----------------------------|--|-----------|-------------|-----------|
| Switch Settings | | | | | CFM | | | | | | |
| HEAT | COOL | | | | | | | | | | |
| A/B | 5 | 6 | 7 | 8 | LOW | CFM | | | | | |
| # | 0 | 0 | 0 | 0 | 705 | 1025 | | | | 2.5 T ON | |
| # | 0 | 0 | 0 | 1 | 750 | 1090 | | | | | 3 TO N |
| # | 0 | 0 | 1 | 0 | 795 | 1155 | | | | | |
| # | 0 | 0 | 1 | 1 | 840 | 1220 | | | | | |
| # | 0 | 1 | 0 | 0 | 885 | 1285 | | | | | |
| # | 0 | 1 | 0 | 1 | 930 | 1350 | | | | | |
| # | 0 | 1 | 1 | 0 | 975 | 1415 | | | | | |
| # | 0 | 1 | 1 | 1 | 1020 | 1480 | | | | | |
| # | 1 | 0 | 0 | 0 | 1065 | 1545 | | | | | |
| # | 1 | 0 | 0 | 1 | 1110 | 1610 | | | 4 TO N | | |
| # | 1 | 0 | 1 | 0 | 1155 | 1675 | | | | | |
| # | 1 | 0 | 1 | 1 | 1200 | 1740 | | | | | |
| # | 1 | 1 | 0 | 0 | 1245 | 1805 | | | | | |
| # | 1 | 1 | 0 | 1 | 1290 | 1870 | | | 5 TO N | | |
| # | 1 | 1 | 1 | 0 | 1335 | 1935 | | | | | |
| # | 1 | 1 | 1 | 1 | 1380 | 2000 | | | | | |

| D Cabinet | | | | | | | Nominal A/C and HP Capacity | | | |
|-----------------|------|---|---|---|------|------|-----------------------------|-------|---------|--|
| Switch Settings | | | | | CFM | | | | | |
| HEAT | COOL | | | | | | | | | |
| A/B | 5 | 6 | 7 | 8 | LOW | CFM | | | | |
| # | 0 | 0 | 0 | 0 | 965 | 1400 | | | 3.5 TON | |
| # | 0 | 0 | 0 | 1 | 995 | 1440 | | | | |
| # | 0 | 0 | 1 | 0 | 1020 | 1480 | | 4 TON | | |
| # | 0 | 0 | 1 | 1 | 1050 | 1520 | | | | |
| # | 0 | 1 | 0 | 0 | 1075 | 1560 | | | | |
| # | 0 | 1 | 0 | 1 | 1105 | 1600 | | | | |
| # | 0 | 1 | 1 | 0 | 1130 | 1640 | | | | |
| # | 0 | 1 | 1 | 1 | 1160 | 1680 | | 5 TON | | |
| # | 1 | 0 | 0 | 0 | 1185 | 1720 | | | | |
| # | 1 | 0 | 0 | 1 | 1215 | 1760 | | | | |
| # | 1 | 0 | 1 | 0 | 1240 | 1800 | | | | |
| # | 1 | 0 | 1 | 1 | 1270 | 1840 | | | | |
| # | 1 | 1 | 0 | 0 | 1295 | 1880 | | | | |
| # | 1 | 1 | 0 | 1 | 1325 | 1920 | | | | |
| # | 1 | 1 | 1 | 0 | 1350 | 1960 | | | | |
| # | 1 | 1 | 1 | 1 | 1380 | 2000 | | | | |

VENTING

All models are approved for vertical non direct (1 pipe) and direct (2 pipe) venting applications. See Vent Table below for specified sizes and allowable lengths

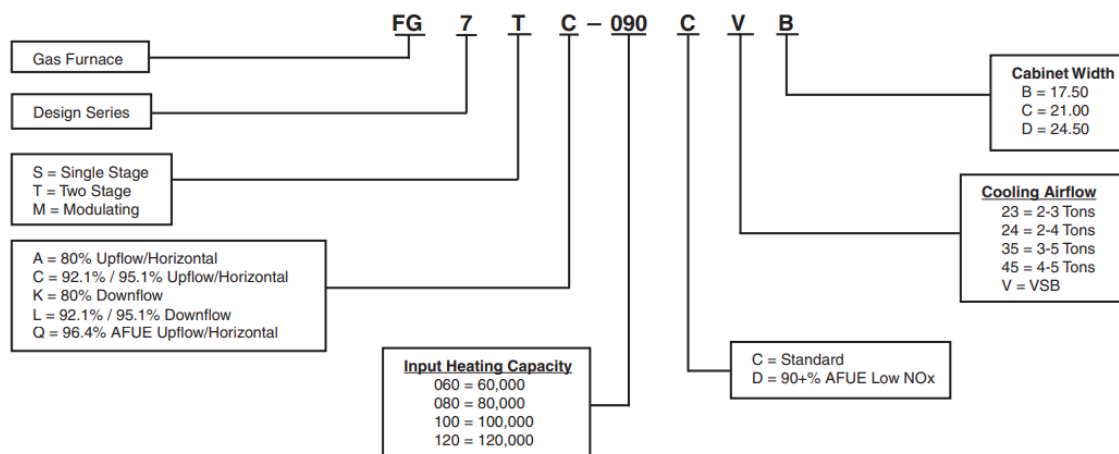
VENT TABLE

| FURNACE MODEL S (BTU) | FURNACE INSTALLATION | SINGLE PIPE LENGTH (FT.)with 1 long radius elbow** | | DIRECT VENT,DUAL PIPE LENGTH (ft.) WITH1 long radius elbow on each pipe** | |
|-----------------------|----------------------|--|-------------|---|--------------|
| | | OUTLET | OUTLET | INLET/OUTLET | INLET/OUTLET |
| | | 2" Diameter | 3" Diameter | 2" Diameter | 3" Diameter |
| 60,000 | Upflow | 90 | 90 | 90 | 90 |
| | Horizontal | 50 | 90 | 50 | 90 |
| | Downflow | 30 | 90 | 30 | 90 |
| 80,000 | Upflow | 40 | 90 | 40 | 90 |
| | Horizontal | 30 | 90 | 30 | 90 |
| | Downflow | 30 | 90 | 30 | 90 |
| 100,000 | Upflow | 30 | 90 | 30 | 90 |
| | Horizontal | 30 | 90 | 30 | 90 |
| | Downflow | 30 | 90 | 25 | 90 |
| 120,000 | Upflow | N/A | 90 | N/A | 90 |
| | Horizontal | N/A | 90 | N/A | 90 |
| | Downflow | N/A | 90 | N/A | 90 |

NOTES:

1. Subtract 2.5 ft. for each additional 2 inch long radius elbow, 5 ft. for each additional 2 inch short radius elbow, 3.5 ft. for each additional 3 inch long radius elbow, and 7 ft. for each additional 3 inch short radius elbow. Subtract 5ft for each 2" tee and 8ft for each 3" tee.
2. Two 45 degree elbows are equivalent to one 90 degree elbow.
3. This table applies for elevations from sea level to 2,000 ft. For higher elevations, decrease pipe lengths by 8% per 1,000 ft of altitude.

MODEL IDENTIFICATION CODE



SPECIFICATIONS

| FG7TC/TL MODELS NUMBERS: | -060D-VB | -080D-VC | -100D-VC | -120D-VD |
|-----------------------------|-----------------|-----------------|------------------|------------------|
| Input – Btuh (a) | 60,000 / 39,000 | 80,000 / 52,000 | 100,000 / 65,000 | 120,000 / 78,000 |
| Heating Capacity – Btuh | 57,000 / 37,050 | 76,000 / 49,400 | 95,000 / 61,750 | 114,000 / 74,100 |
| AFUE | 95.1 | 95.1 | 95.1 | 95.1* |
| Blower D x W | 11 x 8 | 11 x 10 | 11 x 10 | 11 x 10 |
| Motor H.P. – Speed – Type | 1/2 – Variable | 3/4 – Variable | 3/4 – Variable | 1 – Variable |
| Motor FLA | 6.2 | 8.7 | 8.7 | 11.70 |
| Rated Ext. SP – In. W.C. | 0.5 | 0.5 | 0.5 | 0.5 |
| Temperature Rise Range – °F | 30-60 | 35-65 | 35-65 | 40-70 |
| Shipping Weights | 125lbs | 135lbs | 145lbs | 160lbs |

*TL 120 is 94.8% AFUE

Note:

All models are 115V, 60 Hz. Gas Connections are 1/2" NPT AFUE-Annual Fuel Utilization Efficiency (a) Ratings to 2,000 ft. Over 2,000 it reduce 41% for each 1,000 ft. above sea level.

ACCESSORIES

| FG7TC/TL KITS | |
|--|--------|
| Description | SKU |
| 2" Concentric vent kit | 904952 |
| 3" Concentric vent kit | 904953 |
| "A" Cabinet downflow sub base kit | 902974 |
| "B", "C", "D" Cabinet downflow sub base kit | 904911 |
| 2" Side wall vent kit | 904617 |
| 3" Side wall vent kit | 904347 |
| U.S. LP Conversion kit (0 to 10,000 ft.) | 904914 |
| Canada LP Conversion kit (0 to 4,500 ft.) | 904915 |
| Bottom return filter 20 per box, "A" cabinet | 903088 |
| Bottom return filter 20 per box, "B" cabinet | 904916 |
| Bottom return filter 20 per box, "C" cabinet | 904917 |
| Bottom return filter 20 per box, "D" cabinet | 904918 |
| Side return filter kit | 541036 |
| Neutralizer kit | 902377 |

GENERAL TERMS OF LIMITED WARRANTY

ANODYNE will furnish a replacement for any part of this product which fails in normal use and service in accordance with the terms of the warranty.

For complete details of the Limited Warranty, including applicable terms and conditions, see your local installer or contact the ANODYNE warranty department for a copy.



SALE 8000 Phoenix Parkway | O'Fallon, MO 63368-3827 Specifications and illustrations subject to change without notice and without incurring obligations. Printed in U.S.A (03/2014) 218D-0314 (Replaces 218D-0212)

www.broanhvac.net

Brand trademark used under Iouas Nortex Global HVAC LLC All Rights Reserved

BROAN®

Documents / Resources



Broan FG7T C,L Two Stage Variable Speed Condensing Upflow Horizontal [pdf] Owner's Manual

FG7T C L Two Stage Variable Speed Condensing Upflow Horizontal, FG7T C L, Two Stage Variable Speed Condensing Upflow Horizontal, Variable Speed Condensing Upflow Horizontal, Condensing Upflow Horizontal, Upflow Horizontal

References

-  TCPDF
- User Manual