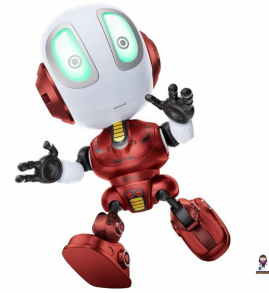



BROADREAM

MY66-Q1202C
TALKING
STOCKING
STUFFERS
ROBOT



BROADREAM MY66-Q1202C Talking Stocking Stuffers Robot User Manual

[Home](#) » [BROADREAM](#) » BROADREAM MY66-Q1202C Talking Stocking Stuffers Robot User Manual 

Contents

- [1 BROADREAM MY66-Q1202C Talking Stocking Stuffers Robot](#)
- [2 INTRODUCTION](#)
- [3 SPECIFICATIONS](#)
- [4 WHAT'S IN THE BOX](#)
- [5 PRODUCT OVERVIEW](#)
- [6 FEATURES](#)
- [7 SETUP GUIDE](#)
- [8 CARE & MAINTENANCE](#)
- [9 TROUBLESHOOTING](#)
- [10 PROS & CONS](#)
- [11 WARRANTY](#)
- [12 FREQUENTLY ASKED QUESTIONS](#)
- [13 References](#)
- [14 Related Posts](#)

BROADREAM

BROADREAM MY66-Q1202C Talking Stocking Stuffers Robot



INTRODUCTION

The BROADREAM MY66-Q1202C Talking Stocking Stuffers Robot is a fun thing to have around for the holidays. This interactive robot, which came out in 2023 and costs only \$16.99, is great for sharing holiday cheer. This cute robot was made by BROADREAM, a company known for making fun and unique toys. It has a lot of fun phrases and sounds that will keep kids and adults entertained. With tiny dimensions of 2.2 x 2 x 4.5 inches, it fits nicely in stockings or as a fun desk buddy. One lithium polymer battery (not included) powers this toy, so it will keep you entertained for a long time. Not only is the BROADREAM Talking Stocking Stuffers Robot fun, but it also helps kids use their imaginations and be creative. This makes it a great gift for kids 36 months and up.

SPECIFICATIONS

Brand Name	BROADREAM
Toy Figure Type	Interactive Gaming Figure
Price	\$16.99
Number of Batteries	1 Lithium Polymer battery required
Item Dimensions (L x W x H)	2.2 x 2 x 4.5 inches
Manufacturer Minimum Age	36 months
Model Number	MY66-Q1202C

WHAT’S IN THE BOX

- Talking Stocking Stuffers Robot
- Battery
- Manual

PRODUCT OVERVIEW



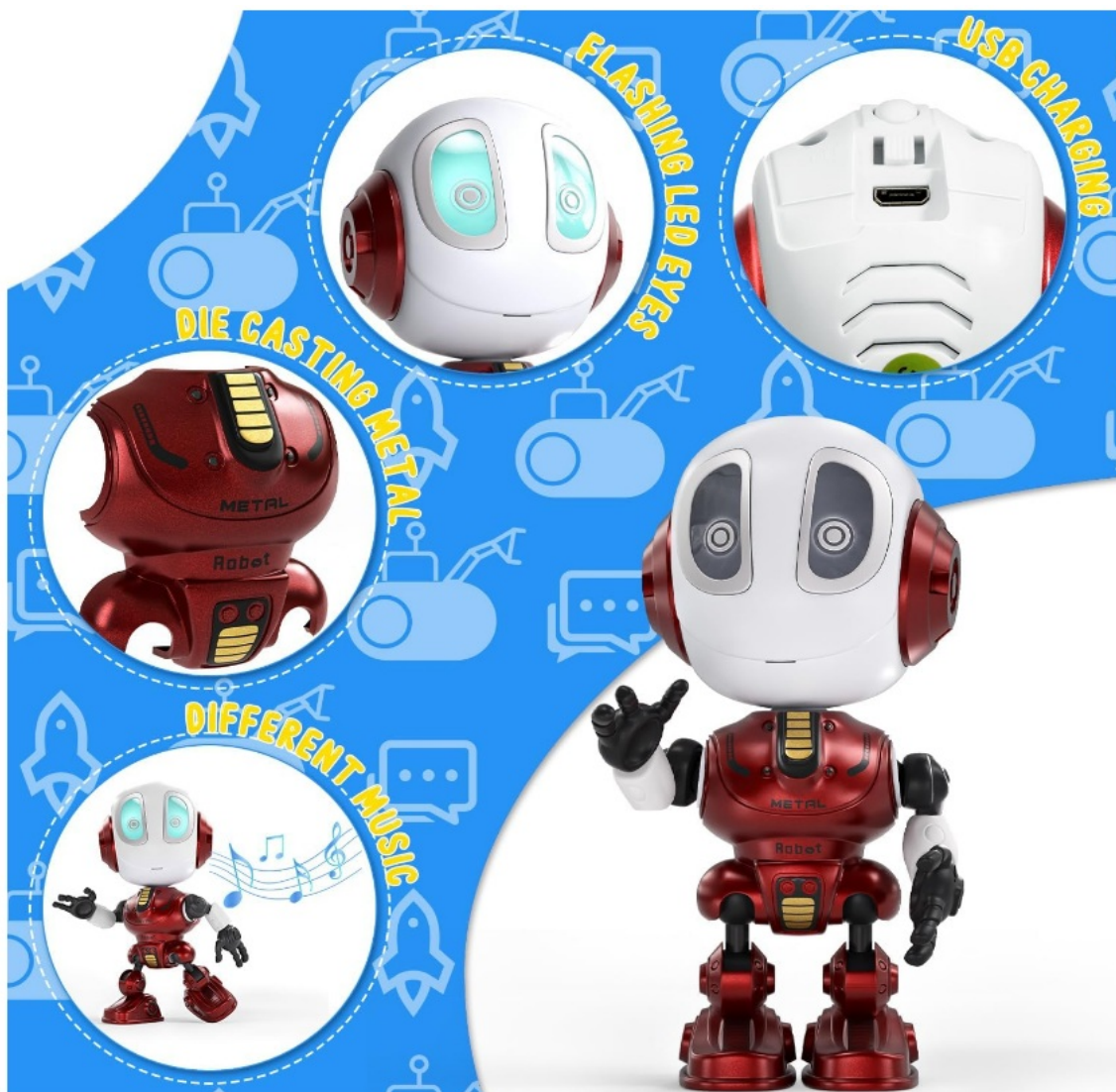
FEATURES

- **Voice Mimicking:** The robot can imitate your voice in a fun way, so you can have fun and interactive talks with it.
- **Flashy Eyes:** The robot's cute personality is boosted by its bright LED eyes that light up.
- **Touch Activation:** The robot's voice and lights come on when you touch its face. This makes it a fun toy for people of all ages.
- **Long Battery Life:** It can play music for up to 10 hours on a single 50-minute USB charge, so it can be used for a long time.
- **Durable Construction:** It's made of die-cast metal and eco-friendly ABS plastic, so it will last for a long time and hold up against rough play.
- **Size:** It's only 4.5 inches tall, so it's small and easy to carry. It's great for play dates or trips.
- **360° Rotatable Joints:** The robot can twist and bend into different poses, giving you more ways to play and show it off.
- **Multifunctional:** It can be used as a phone stand, pen case, and decorative item, so it's more than just a toy.
- **Fits a Wide Range of Ages:** It's made for kids 36 months and up, but adults and older people can also use it.
- **Safety Certified:** It meets US safety standards and has the Children's Product Certificate (CPC), which means it is safe for kids.
- **Engaging Gaming Figure:** Encourages participation and engaging play, which boosts creativity and imagination.
- **Value for Education:** It can be used as a learning partner for kids and helps them improve their language skills by letting them talk to it.

- **Stress Relief:** Its entertaining features and friendly attitude make it a fun way for adults to escape the stress of everyday life.
- **Customer Satisfaction Promise:** It comes with a 90-day satisfaction promise to make sure you're happy with it.
- **It only weighs a few ounces,** which makes it easy for kids to take and handle while they play.

SETUP GUIDE

- **Unboxing:** Carefully take the robot out of its box, making sure that all of its parts are still together and not broken.
- **Charging:** Charge the robot for at least 50 minutes with the USB wire that came with it before you use it for the first time.



- **To turn the robot on:** Find the main switch on the back of it and flip it to the “ON” position.
- **Voice Features:** To turn on the robot, press the power button once. To make it speak like you, press it again.
- **Testing Interactions:** Talk, sing, or laugh close to the robot to hear how it imitates your sounds and make sure it works right.
- **Pose Change:** You can move the robot's joints to make it stand in any way you want or need for a show.
- **Using as a Phone Stand:** Put the robot where it will hold your phone so you can see it easily during calls or

video chats.

- **Setting Up as a Pen Holder** : To use the robot as a work accessory, put pens or pencils in the proper spot on it.
- **Displaying Decoratively**: Put the robot somewhere nice on a desk or shelf to make your room look better.
- **Family Fun**: Have everyone in the family play with the robot by taking turns making noises or asking it questions.
- **Using for Learning** : Include the robot in educational play by sharing stories or practicing vocabulary with it.
- **Group Play**: Bring the robot to play dates so that more than one child can play with it, which will help them get to know each other.
- **Introduce to Elderly Family Members** : Give the robot to your elderly cousins as a friend who can keep them company and provide fun.
- **Supervised Play**: Always watch younger kids while they play to make sure they stay safe and teach them how to behave.
- **Recording Fun**: Write down funny things the robot says or does so you can share them with family and friends later.

CARE & MAINTENANCE

- **Clean It Often**: To keep the robot clean and dust-free, wipe its surface with a soft, dry cloth.
- **Avoid Water**: To protect the robot's internal parts, do not submerge it in water or leave it out in wet conditions.
- **Maintenance for the Battery** : Check it often and change it if the robot starts to work less well.
- **Handling Carefully** : Teach the kids how to handle the robot carefully so that they don't damage its electronics and moving parts.
- **How to Store It**: Keep the robot out of direct sunlight and high temperatures when not in use. Keep it in a cool, dry place.
- **Check for Damage**: Looking for signs of wear or damage should be done often, especially after rough play.
- **Avoid Too Much Force**: To keep the joints from breaking, don't push them past their range of motion.
- **Charging Tips**: To make sure it works and keep it from breaking, only use the USB charging wire that came with it.
- **Watch How It's Used** : Play sessions should not last too long so the robot doesn't get too hot and lasts longer.



- **Teach About Safety:** To keep kids from getting hurt, teach them how to use the computer in a safe and responsible way.
- **Protect from Falls:** Put the robot somewhere safe so it doesn't fall and get hurt.
- **Routine Maintenance:** Make sure to check the performance on a regular basis and do any maintenance or repairs that need to be done right away.
- **Keep Out of Reach of Pets:** Keep the robot out of reach of pets so they don't chew on it or scratch it.
- **Record Fun Interactions:** Keep track of fun times you had with the robot so you can enjoy them again and share them with others.

TROUBLESHOOTING

Issue	Possible Solution
No sound when activated	Check if the battery needs replacing.
Voice is unclear	Ensure the speaker is not obstructed.
The robot does not respond	Make sure the activation button is pressed firmly.
The sound is too quiet	Check battery connections for tightness.
Robot is unresponsive	Remove and reinsert the battery.
Surface scratches	Clean gently with a soft, damp cloth.
The robot falls over easily	Ensure it's on a flat, stable surface.
Limited sound options	Explore all functions to hear different phrases.
The battery compartment is corroded	Clean terminals with a soft cloth.
The robot's movements are slow	Ensure there are no obstructions in the mechanism.
The toy's eyes are not lighting up	Check battery installation and connections.
Robot's features are inconsistent	Test all buttons to ensure full functionality.
Parts are loose	Check screws and tighten them as necessary.
The robot's voice repeats too often	Ask different questions to activate various responses.
Resetting is needed	Refer to the user manual for reset instructions.
The robot doesn't power on	Ensure the battery is properly inserted and charged.

PROS & CONS

Pros:

1. Affordable price makes it an excellent stocking stuffer option.
2. Interactive features engage children's imaginations.
3. Compact size allows easy placement in stockings or bags.
4. Durable design ensures long-lasting enjoyment.
5. Encourages social interaction and conversation among kids.

Cons:

1. Limited functionality compared to larger robotic toys.
2. Requires a battery, which adds to ongoing costs.
3. The novelty may wear off quickly for some children.
4. Sound quality may not be very loud.
5. Small parts could pose a choking hazard for younger kids.

WARRANTY

The BROADREAM MY66-Q1202C Talking Stocking Stuffers Robot comes with a limited warranty covering any

manufacturing defects for 30 days from the date of purchase. Keep your receipt as proof of purchase to facilitate any warranty claims.

FREQUENTLY ASKED QUESTIONS

What is the BROADREAM MY66-Q1202C Talking Stocking Stuffers Robot?

The BROADREAM MY66-Q1202C Talking Stocking Stuffers Robot is an interactive gaming figure designed to engage children with fun sounds and activities.

How much does the BROADREAM MY66-Q1202C Talking Stocking Stuffers Robot cost?

The BROADREAM MY66-Q1202C Talking Stocking Stuffers Robot is priced at \$16.99.

What type of toy figure is the BROADREAM MY66-Q1202C?

The BROADREAM MY66-Q1202C is classified as an interactive gaming figure, designed to entertain and engage users.

How many batteries does the BROADREAM MY66-Q1202C Talking Stocking Stuffers Robot require?

The BROADREAM MY66-Q1202C requires 1 Lithium Polymer battery for operation.

What are the dimensions of the BROADREAM MY66-Q1202C Talking Stocking Stuffers Robot?

The dimensions of the BROADREAM MY66-Q1202C are 2.2 inches in length, 2 inches in width, and 4.5 inches in height.

What is the minimum age requirement for the BROADREAM MY66-Q1202C?

The manufacturer recommends the BROADREAM MY66-Q1202C Talking Stocking Stuffers Robot for children aged 36 months (3 years) and older.

How does the BROADREAM MY66-Q1202C interact with users?

The BROADREAM MY66-Q1202C interacts by producing sounds and responding to user input, enhancing the gaming experience.

Can the BROADREAM MY66-Q1202C Talking Stocking Stuffers Robot help with learning?

BROADREAM MY66-Q1202C can help with learning through interactive play that encourages problem-solving and cognitive skills.

What makes the BROADREAM MY66-Q1202C a popular gift choice?

The BROADREAM MY66-Q1202C is popular as a gift due to its interactive features, engaging design, and affordability, making it a fun stocking stuffer.

What types of activities can the BROADREAM MY66-Q1202C perform?

The BROADREAM MY66-Q1202C can perform various interactive responses and activities, making it entertaining for children during playtime.

What themes or designs are available for the BROADREAM MY66-Q1202C?

The BROADREAM MY66-Q1202C may come in various colors and designs, appealing to children's preferences and interests.

How does the BROADREAM MY66-Q1202C contribute to imaginative play?

The BROADREAM MY66-Q1202C encourages imaginative play by allowing children to create scenarios and engage with the robot in various fun activities.

What should I do if my BROADREAM MY66-Q1202C Talking Stocking Stuffers Robot isn't turning on?

First, check if the batteries are installed correctly. If the robot still doesn't turn on, try replacing the batteries with new ones to see if that resolves the issue.

Why is my BROADREAM MY66-Q1202C Talking Stocking Stuffers Robot not responding when I press its buttons?

If the buttons are unresponsive, the batteries may be low or improperly installed. Check the battery orientation and replace them if necessary to restore functionality.

The sound from my BROADREAM MY66-Q1202C Talking Stocking Stuffers Robot is too low; how can I fix it?

Check for any obstructions near the speaker area that may be muffling the sound. If the volume is adjustable, ensure it's set to a higher level. If the issue persists, consider replacing the batteries.

References

- [User Manual](#)

[Manuals+](#), [Privacy Policy](#)

This website is an independent publication and is neither affiliated with nor endorsed by any of the trademark owners. The "Bluetooth®" word mark and logos are registered trademarks owned by Bluetooth SIG, Inc. The "Wi-Fi®" word mark and logos are registered trademarks owned by the Wi-Fi Alliance. Any use of these marks on this website does not imply any affiliation with or endorsement.