



BroadLink SC4B4 Scene Switch User Manual

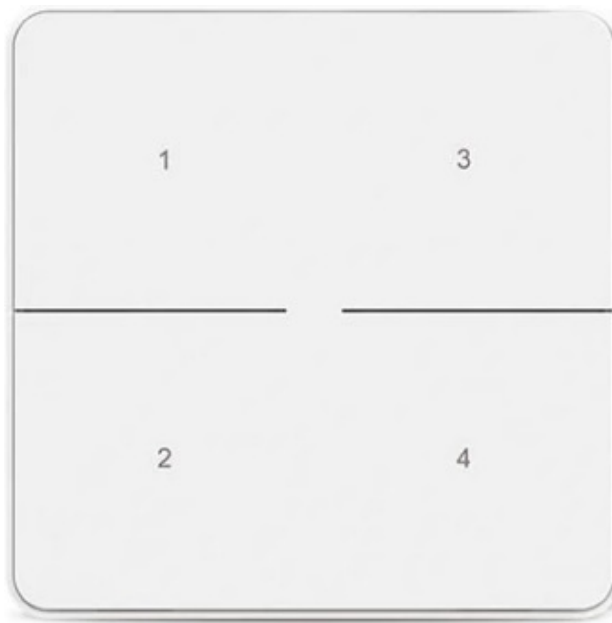
[Home](#) » [BroadLink](#) » BroadLink SC4B4 Scene Switch User Manual 

Contents

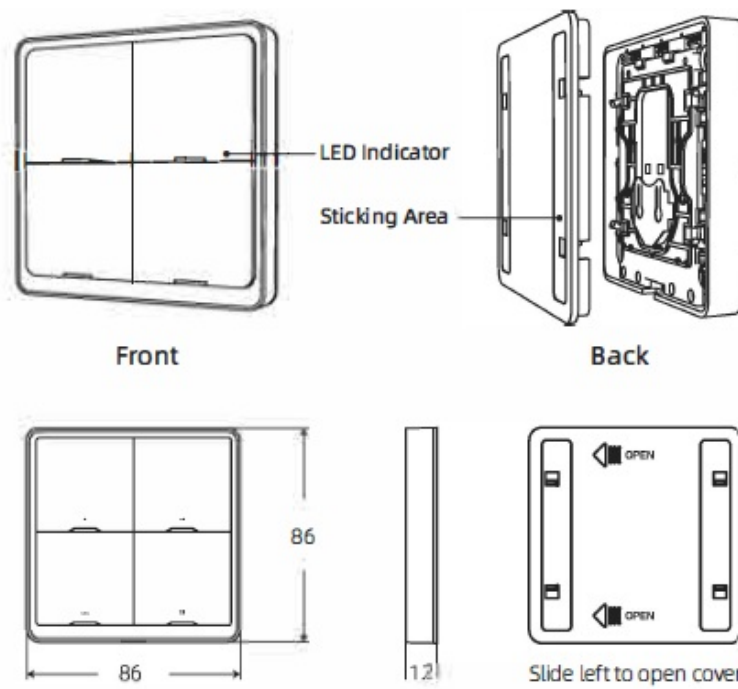
- [1 BroadLink SC4B4 Scene Switch](#)
- [2 Overview](#)
- [3 Product Features](#)
- [4 What's Required](#)
- [5 Install APP](#)
- [6 Add Device](#)
- [7 Use Preset Scenes](#)
- [8 Change Scene Setting](#)
- [9 Quick Dimming/ Color Change](#)
- [10 Important Notices](#)
- [11 Frequently Asked Questions](#)
- [12 FCC Radiation Exposure Statement](#)
- [13 Documents / Resources](#)
- [14 Related Posts](#)



BroadLink SC4B4 Scene Switch



Overview



Product Features



What's Required



- Smart Phone
- FastCon BLE lights
- CR2430 Battery

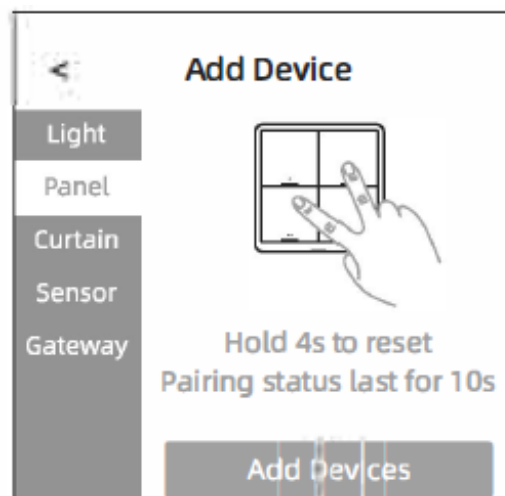
A smart phone or tablet running iOS 11.0 / Android 5.1 or higher with Bluetooth turned on. fast BLE enabled lights. Insert a CR2430 cell battery (not included in package) to power the device.

Install APP



- Scan the QR code or search “BroadLink BLE” in App Store or Google Play to download and install the free App.
- Account creation is not mandatory to use the App. However, as an option, you can go to “Me” tab to create your account for syncing data between different mobile devices.

Add Device



- Tap “Add Device” > “Scene Switch” > “Add Devices” to let the App scan devices to be paired.
- Press and hold buttons 1&4 or 2&3 for 4s to reset the device until all LEDs are flashing. Then wait for the device to be discovered automatically in the App. You can rename the device and tap “Done” to complete pairing.

Use Preset Scenes

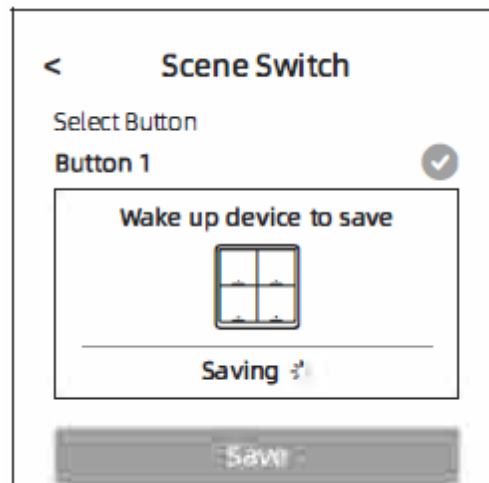


- The scene switch is ready-to-use after pairing. The 4 buttons match the first 4 scenes preset in the room which

the switch is assigned.

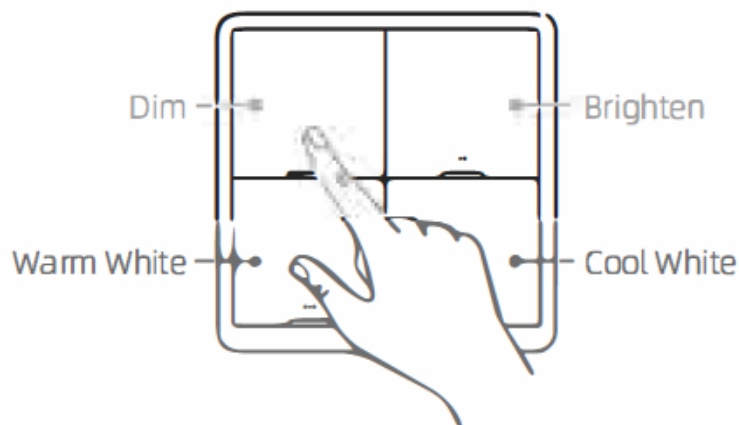
- Now you can just press and activate the scenes from the buttons.

Change Scene Setting



- You can tap the “;” to edit the scene (ex. Change another button to activate the scene or associate a new scene to a button).
- Tap “+ Add Trigger” and choose scene switch and button.
- Then tap “Save” and wake up the device again with long pressing the button combinations to save the change

Quick Dimming/ Color Change



- You can simply press and hold button 1 / 2 (;,2s) to dim/brighten the lights in the room, or press and hold the button 3/4 (;,2s) to tune the color temperature to warm white / cool white.
- **NOTE:** The quick dimming / color change operations are only effective for lights which are already turned on.

Important Notices

- For wall-mounting use, ONLY stick the back cover to flat surface to avoid dropping.
- If the battery is low, button 1 will flash once when any button is pressed. You should change the battery asap.
- The use of App doesn't require creation of account for simplest experience. We still highly recommend users to create account so when you change a phone and log in with same account, everything will be automatically

synced without setting up again.

Frequently Asked Questions

Why we need to long press the button combination to save changes?

For battery saving, the scene switch is “sleeping” most of time and will be triggered to wake up only when it is pressed for communication – this is a common design for battery powered sensors.

FCC Radiation Exposure Statement

This device complies with Part 15 of the FCC Rules. Operation is subject to the following two conditions: This device may not cause harmful interference, and this device must accept any interference received, including interference that may cause undesired operation. This equipment complies with FCC radiation exposure limits set forth for an uncontrolled environment. This equipment should be installed and operated with minimum distance 20cm between the radiator & your body

FCC Warning

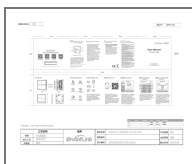
This device complies with Part 15 of the FCC Rules. Operation is subject to the following two conditions: (1) This device may not cause harmful interference, and (2) this device must accept any interference received, including interference that may cause undesired operation.

NOTE 1: This equipment has been tested and found to comply with the limits for a Class B digital device, pursuant to part 15 of the FCC Rules. These limits are designed to provide reasonable protection against harmful interference in a residential installation. This equipment generates uses and can radiate radio frequency energy and, if not installed and used in accordance with the instructions, may cause harmful interference to radio communications. However, there is no guarantee that interference will not occur in a particular installation. If this equipment does cause harmful interference to radio or television reception, which can be determined by turning the equipment off and on, the user is encouraged to try to correct the interference by one or more of the following measures

- Reorient or relocate the receiving antenna.
- Increase the separation between the equipment and receiver.
- Connect the equipment into an outlet on a circuit different from that to which the receiver is connected
- Consult the dealer or an experienced radio/TV technician for help

NOTE 2: Any changes or modifications to this unit not expressly approved by the party responsible for compliance could void the user's authority to operate the equipment.

Documents / Resources



[BroadLink SC4B4 Scene Switch](#) [pdf] User Manual
SC4B4, 2ATEV-SC4B4, 2ATEVSC4B4, SC4B4 Scene Switch, SC4B4, Scene Switch