



BroadLink SC4B4 FastCon Smart Button Scene Switch User Manual

[Home](#) » [BroadLink](#) » BroadLink SC4B4 FastCon Smart Button Scene Switch User Manual 

Contents

- [1 BroadLink SC4B4 FastCon Smart Button Scene Switch](#)
- [2 Product Information](#)
- [3 Product Usage Instructions](#)
- [4 Overview](#)
- [5 Product Features](#)
- [6 What's Required](#)
- [7 SET-UP](#)
- [8 Important Notices](#)
- [9 Frequently Asked Questions](#)
- [10 FCC Radiation Exposure Statement](#)
- [11 Documents / Resources](#)
 - [11.1 References](#)
- [12 Related Posts](#)



BroadLink SC4B4 FastCon Smart Button Scene Switch



Product Information

The Scene SwitchSC4B4 is a versatile device that allows you to control your smart home lighting and create customized scenes. With quick dimming and color change capabilities, it provides a convenient way to adjust the lighting ambiance in your home. The product features preset scenes, easy automation change, and no account requirement, making it easy to use and integrate into your smart home setup.

Product Usage Instructions

Step 1: Install APP

To begin using the Scene SwitchSC4B4, you need to install the accompanying mobile application. Visit the Official Website, Facebook, YouTube, or Twitter to access the app download link. Follow the installation instructions provided in the app to set it up on your smartphone.

Step 2: Add Device

Once the app is installed, open it and navigate to the “Add Device” section. Select the type of device you want to add (e.g., Light, Panel, Curtain, Sensor, Gateway) and follow the on-screen instructions to pair the Scene SwitchSC4B4 with your smart home system. Hold the device’s pairing button for 4 seconds to initiate the pairing process. The pairing status will last for 10 seconds, during which you need to complete the pairing on the app.

Step 3: Use Preset Scenes

After successfully adding the Scene SwitchSC4B4 to your smart home system, you can start using the preset scenes. Open the app and navigate to the “Preset Scenes” section. Choose from the available scenes (e.g., My Home, Living Room, Master Bedroom) and tap on the desired scene to activate it. The Scene SwitchSC4B4 will adjust the lighting according to the selected scene.

Step 4: Change Scene Setting

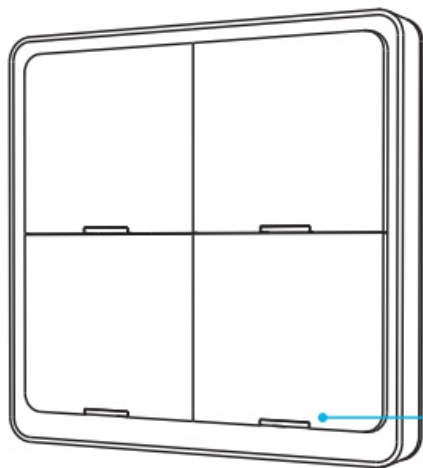
If you want to customize the scene settings or create new scenes, go to the “Change Scene Setting” section in the app. Select the scene you want to modify or create a new scene. Adjust the brightness, color, and other parameters to your preference. Save the changes to apply them to the Scene SwitchSC4B4.

Step 5: Quick Dimming / Color Change

To quickly dim or change the color of the lighting, follow these steps:

1. **Dim Warm White:** Press and hold the button for 2 seconds.
2. **Brighten Cool White:** Press and hold the button for 2 seconds.

Overview



Front

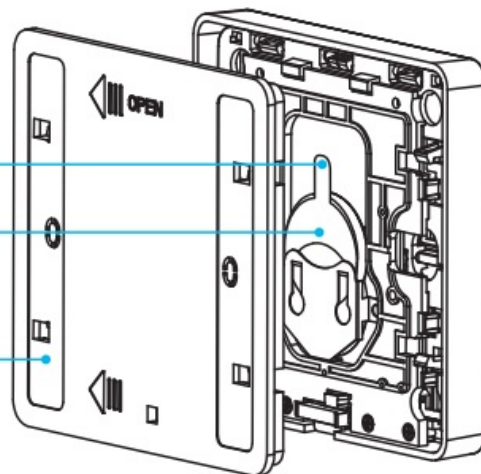
Battery Insulator

Remove for first use

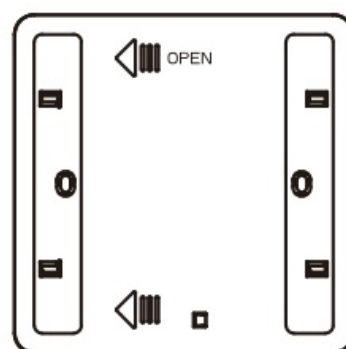
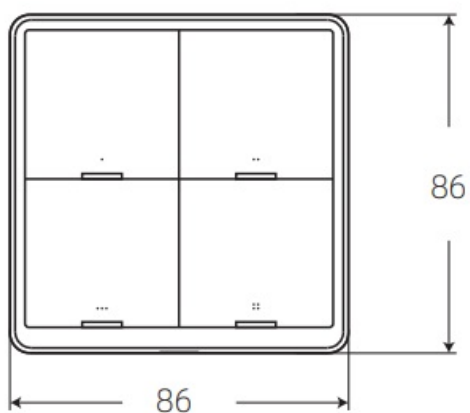
Cell Battery

Sticking Area

LED Indicator



Back



Slide left to open cover

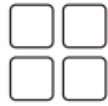
Product Features



No Account
Required



Place Anywhere



Preset Scenes



Easy Automation
Change



Quick Dimming



Quick Color
Change

What's Required

Smart
Phone



FastCon
BLE lights



CR2430
Battery



- A smart phone or tablet running iOS 11.0 / Android 5.1 or higher with Bluetooth turned on.
- FastCon BLE enabled lights.
- Open the cover and remove battery insulator for first use to power the device.

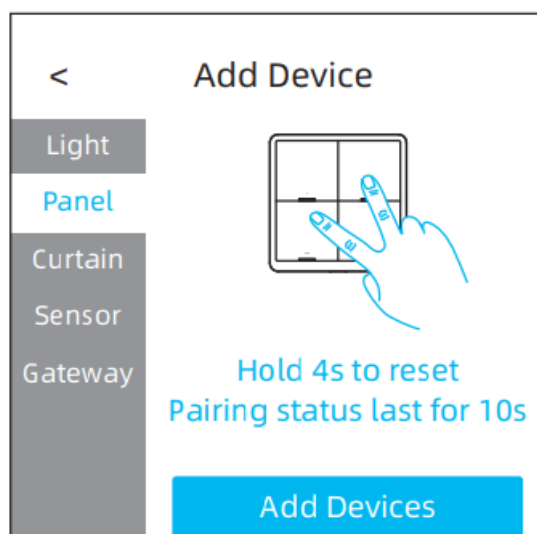
SET-UP

STEP 1 Install APP



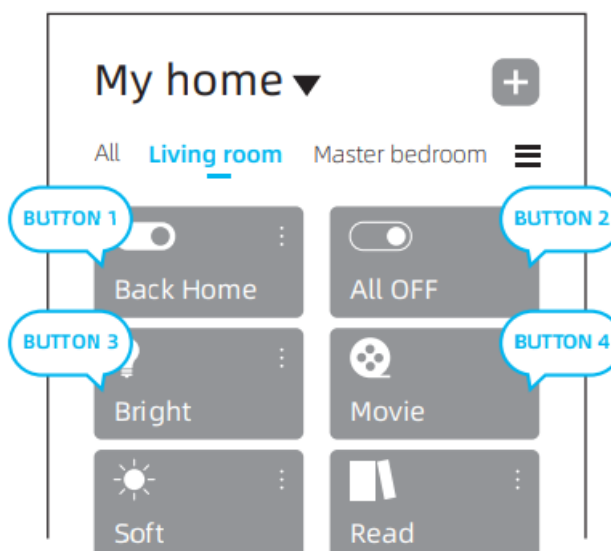
- Scan the QR code or search “BroadLink BLE” in App Store or Google Play to download and install the free App.
- Account creation is not mandatory to use the App. However, as an option, you can go to “Me” tab to create your account for syncing data between different mobile devices.

STEP 2 Add Device



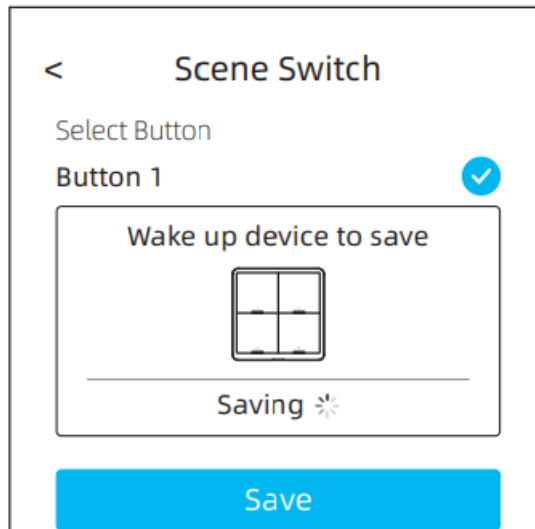
- Tap “Add Device” > “Scene Switch” > “Add Devices” to let the App scan devices to be paired.
- Press and hold buttons 1 & 4 or 2 & 3 for 4s to reset the device until all LEDs are flashing. Then wait for the device to be discovered automatically in the App. You can rename the device and tap “Done” to complete pairing.

STEP 3 Use Preset Scenes



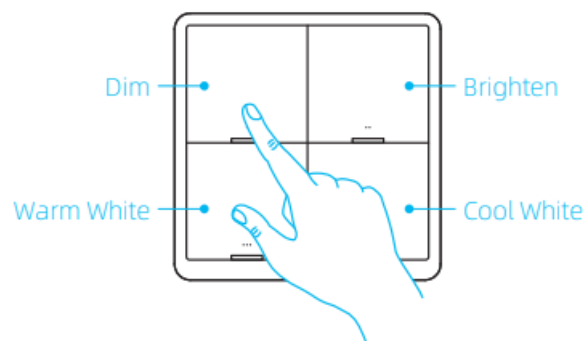
- The scene switch is ready-to-use after pairing. The 4 buttons match the first 4 scenes preset in the room which the switch is assigned.
- Now you can just press and activate the scenes from the buttons.

STEP 4 Change Scene Setting



- You can tap the “⋮” to edit the scene (ex. Change another button to activate the scene or associate a new scene to a button).
- Tap “+ Add Trigger” and choose scene switch and button.
- Then tap “Save” and wake up the device again with long pressing the button combinations to save the change.

STEP 5 Quick Dimming / Color Change



Press and Hold ≥2s

- You can simply press and hold button 1/2 (≥2s) to dim/brighten the lights in the room, or press and hold the button 3/4 (≥2s) to tune the color temperature to warm white / cool white.
- **NOTE:** The quick dimming / color change operations are only effective for lights which are already turned on.

Important Notices

- For wall-mounting use, ONLY stick the back cover to flat surface to avoid dropping.
- If the battery is low, button 1 will flash once when any button is pressed. You should change the battery asap.
- The use of App doesn't require creation of account for simplest experience. We still highly recommend users to create account so when you change a phone and log in with same account, everything will be automatically

synced without setting up again.

Frequently Asked Questions

- **Why we need to long press the button combination to save changes?**

For battery saving, the scene switch is “sleeping” most of time and will be triggered to wake up only when it is pressed for communication – this is a common design for battery powered sensors.

FCC Radiation Exposure Statement

- **FCC ID:** 2ATEV-SC4B4
- This device complies with Part 15 of the FCC Rules. Operation is subject to the following two conditions:
- This device may not cause harmful interference, and this device must accept any interference received, including interference that may cause undesired operation.

www.ibroadlink.com

Email: support@broadlink.com

Access product tutorials and manuals from:



Official Website



Facebook



YouTube



Twitter

Having issues of using the product?

Please contact us before returning.

support@ibroadlink.com

We are always be ready to help until you smile:)

Documents / Resources



[BroadLink SC4B4 FastCon Smart Button Scene Switch](#) [pdf] User Manual
SC4B4 Fast Con Smart Button Scene Switch, SC4B4, Fast Con Smart Button Scene Switch, S
mart Button Scene Switch, Button Scene Switch, Scene Switch, Switch

References

- [User Manual](#)

