



BROADCOM BCM94398FCREF7X7 PCI-E Custom Card User Guide

[Home](#) » [BROADCOM](#) » BROADCOM BCM94398FCREF7X7 PCI-E Custom Card User Guide 



Introduction: Broadcom BCM94398FCREF7X7 PCI-E Custom Card User's Guide

Before you begin Things you
should know
BCM94389FCPAGB network

Contents

- [1 Before you begin](#)
- [2 Overview](#)
- [3 Utility Components](#)
- [4 Site Monitor](#)
- [5 Information](#)
- [6 Wireless Network Connection Settings](#)
- [7 Documents / Resources](#)
 - [7.1 References](#)

Before you begin

Obtain the following information from your network administrator (if you are a home user, obtain this information from the person that installed your wireless access point):

- Network names (SSID) of the specific wireless networks that you want to connect to.
- WEP (Wired Equivalent Privacy) key information (if any) for the networks you want to connect to.
- For Microsoft® Windows® networking, your customer name and workgroup name.

- For your network account, your user name and password.
- Your IP address (if not using a DHCP server)

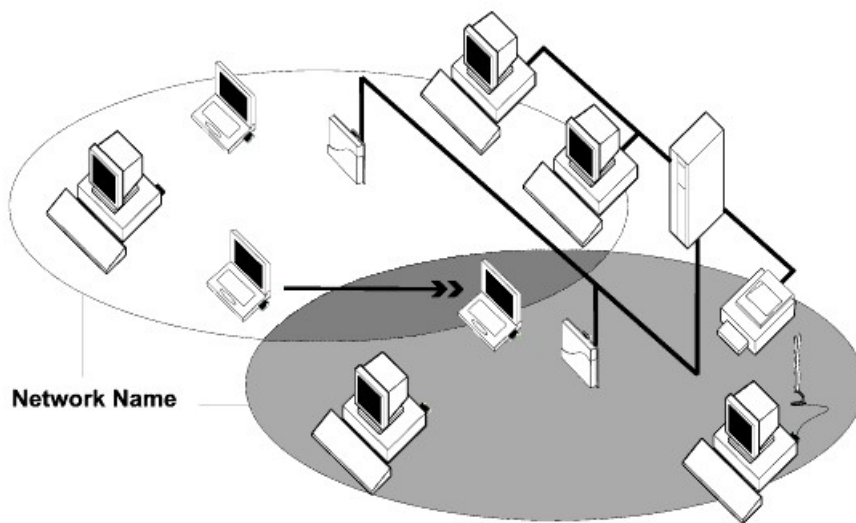
Things you should know

When you start your computer, your Broadcom BCM94398FCREF7X7 PCI-E Custom card detects certain wireless networks that are within range. Before you can connect to these and other wireless networks, you must configure a profile for each network using the information you obtained from your network administrator.

WEP is a security protocol for wireless local area networks (defined in the IEEE 802.11g standard) that encrypts data sent over radio waves. The use of the WEP key is optional and can be enabled or disabled. If the network you are connecting to has enabled WEP, you must also enable WEP in the network profile and set the WEP key to match the WEP key used by the network. Otherwise, you cannot connect to the network.

Broadcom BCM94398FCREF7X7 network

The Broadcom BCM94398FCREF7X7 solution allows you to make a wireless connection to a network, as illustrated below.



Using the Broadcom Wireless Utility: Broadcom AirForce™ 54g™ and Intensi-fi™ Wireless Network Adapter User Guide

Overview

The Broadcom Wireless Utility enables you to do the following network tasks:

- Manage your wireless networks and create network connection profiles (Wireless Networks tab)
- Connect to available networks (utility icon in notification area)
- Get information about the network status and signal and noise of your network connection (Link Status tab)
- View current and accumulated statistics (Statistics tab)
- Find out which broadcasting networks are in range and search for non broad casting networks (Site Monitor tab)
- Run tests on the wireless network adapter (Diagnostics tab)
- Get date and version information about the utility, and software, hardware, and location details about your wireless network adapter (Information tab)
- Manually add or delete trusted servers and enable the manual acceptance or rejection of auto provisioning and A-ID group changes (Wireless Networks tab)
- Manually import EAP-FAST PACs (Wireless Networks tab)

In the utility, you can open Wireless Network Wizard to connect to a basic network or create an ad hoc network, or you can open the Wireless Network Connection Settings tool to connect to an advanced network. To do any of the other tasks, click the tab that is associated with the described task.

To start using the utility, right-click the utility icon  in the notification area, and then click Open Utility. If the icon is not available, open Broadcom Wireless Utility in Control Panel.



NOTE: The utility icon may not appear exactly as shown here. See “Table 1. Signal Strength Indicated by the Broadcom Wireless Utility Icon.”

Utility Components

Utility components include the utility icon in the notification area, the six utility tabs, and Wireless Network Connection Settings.

Utility Icon

To do any of the following tasks or operations, right-click the utility icon, and then click the appropriate item.

- Open the on-line Broadcom AirForce™ 54g™ and Intensi-fi™ Wireless Network Adapter User Guide (Help Files)
- Open About WLAN Card Utility to view links to Broadcom and Broadcom Customer Support websites and to view the version and date of the utility (About)
- Hide the utility icon (Hide Tray Icon)
- Disable or enable the radio (Disable/Enable Radio)
- Connect to any of the networks for which you have created a connection profile and are within range (Connect To)
- Open the utility to the Wireless Networks tab (Open Utility)
- Open the utility to the Link Status tab to view information about the connection (Status)
- Display a log of your wireless network events (Display Log)

Wireless Networks Tab

The Wireless Networks tab has tools that enable you to do the following:

- Use the utility to manage your wireless networks
- Add a network connection profile
- Edit or remove a network connection profile
- Change the order in which profiles are listed under Preferred network connections
- Connect to any listed network without changing its order in the list
- Disable or enable the radio (Disable/Enable Radio)
- Show or hide the utility icon in the notification area
- Choose which type of network to access
- Lock or unlock a preferred network connection profile
- Save your wireless network connection profiles as a WPN file
- Import a WPN file
- Manually add or delete trusted servers and enable the manual acceptance or rejection of auto provisioning and A-ID group changes
- Manually import EAP-FAST PACS

On the Add menu, you can use either the wireless network wizard that is available from Broadcom Wireless Utility (see Connecting to a Basic Network or Creating an Ad Hoc Network Using the Wireless Network Wizard”) or the utility (see “Connecting to an Advanced Network Using the Broadcom Wireless Utility”) to add a network connection profile.

To use the utility to manage your wireless networks, select the Let this tool manage your wireless networks check box.


To add a network connection profile, click the Add arrow, and then click either Use Wizard (basic network) or Use Utility (advanced network).

To edit or remove a network connection profile, right-click the network name, and then click either Edit or Remove.

To change the order in which profiles are listed under Preferred network connections, click the network name, and then click either the up arrow or down arrow.


To connect to any listed network without changing its order in the list, right-click the network name, and then click Connect.

To disable the radio, clear the Enable radio check box. To enable the radio, select the Enable radio check box.

To hide the utility icon , clear the Show utility icon check box. To show the icon, select the Show utility icon check box.

To choose the type of network to access, click the Options arrow, and then click Advanced.

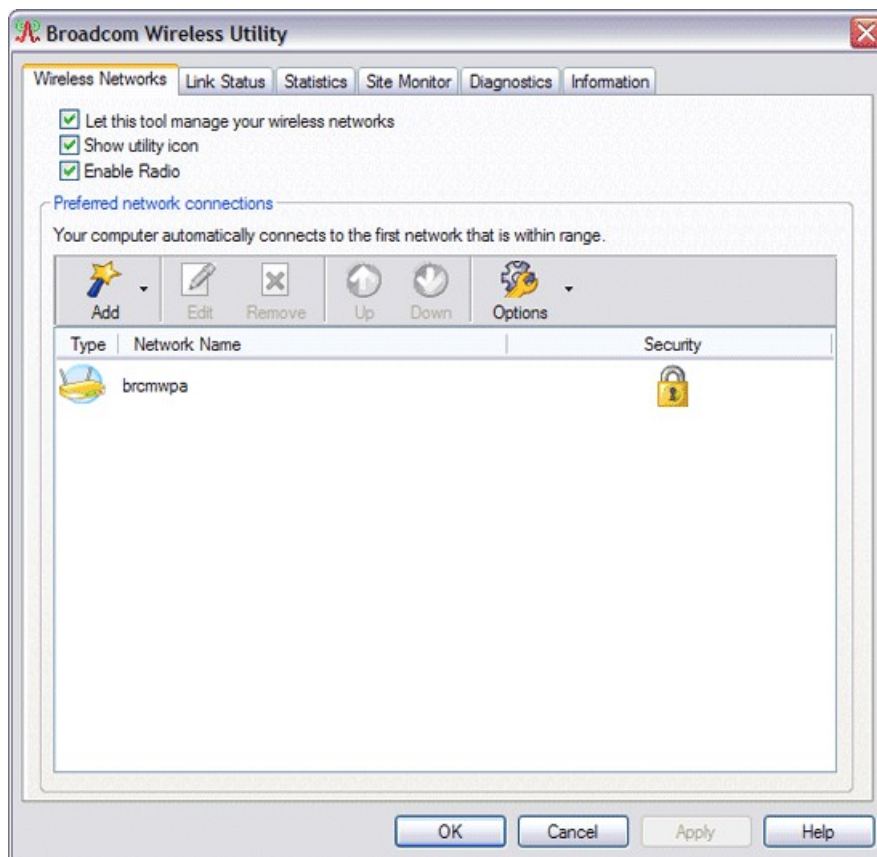
To lock or unlock a preferred network connection profile, right-click anywhere in the row that lists the network name, and then click Lock or Unlock, as appropriate.

 **NOTE:** You must have system or administrator rights to be able to lock or unlock a profile.

To save your wireless network connection profiles to a WPN file, click the Options arrow, and then click Export (see “Saving Preferred Network Connection Settings to a File” in “Connecting to an Advanced Network Using the Broadcom Wireless Utility.”)

To import a WPN file, click the Options arrow, and then click Import (see “Importing a Preferred Network Connection Profiles File” in “Connecting to an Advanced Network Using the Broadcom Wireless Utility.”)

Click Apply or OK after you change any of the settings for the change to take effect.



For networks that use the EAP-FAST authentication method, the Wireless WLAN Card Utility automatically adds trusted servers to the trust list and accepts auto-provisioning and AID (A-ID) group changes by default. The utility also enables you to import a Protected Access Credential (PAC). From the utility, you can also manually add or delete trusted servers, enable the manual acceptance or rejection of auto provisioning and A-ID group changes, or import or delete PACS, as described in the following instructions.

In general, you should use the default settings. Therefore, check with the network administrator before you make any changes.

To manually add a trusted server to the trust list

1. Open Broadcom Wireless Utility.
2. From the Wireless Networks tab, click Options, point to Cisco Compatible Extensions, and then click Administrator Settings.
3. Click Add.
4. Type the A-ID friendly name of the trusted server in the space provided, and then click OK.

To delete a trusted server from the trust list

1. Open Broadcom Wireless Utility.
2. From the Wireless Networks tab, click Options, point to Cisco Compatible Extensions, and then click Administrator Settings.
3. In the Trust list (A-ID), click the name of the trusted server you want to delete, and then click Delete.

To change the default settings for administering Cisco Compatible Extensions

1. Open Broadcom Wireless Utility.
2. From the Wireless Networks tab, click Options, point to Cisco Compatible Extensions, and then click Administrator Settings.
3. Clear the Disable auto-provision prompt check box to enable manual acceptance or rejection.
4. Clear the Disable A-ID group change prompt check box to enable manual acceptance or rejection.
5. Select the Auto-provision PAC only once check box to auto-provision a Protected Access Credential (PAC) only once.

To import or remove an EAP-FAST PAC

1. Open Broadcom Wireless Utility.
2. From the Wireless Networks tab, click Options, point to Cisco Compatible Extensions, and then click Manage PACs.
3. To import a PAC: in Protected Access Credentials, click Add, and then follow the on-screen instructions.



NOTE: The PAC is password protected, so you must know the password to be able to import the PAC.

-or-

To remove a PAC: click anywhere in the row that lists the PAC, and then click Remove.

Link Status

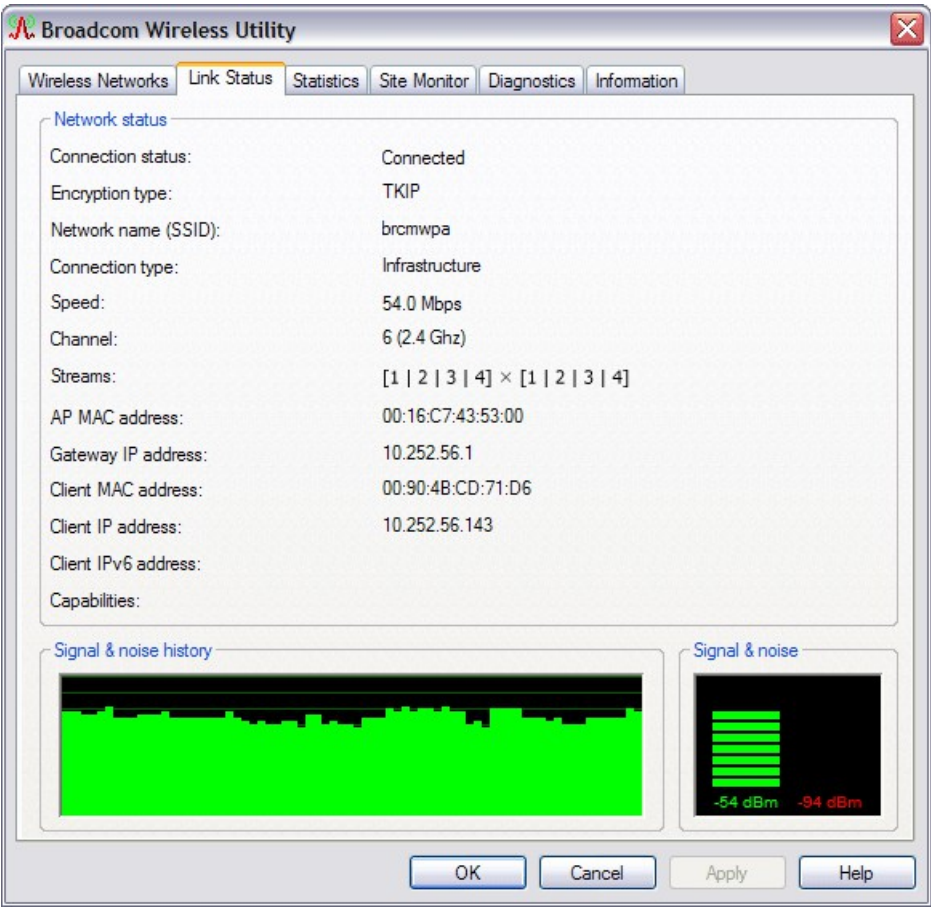
Network status and signal and noise information about your network connection is displayed on the Link Status tab.



NOTES:

- For IEEE 802.11n connections, speed is indicated by an MCS value.

- Radio Stream information is provided only for IEEE 802.11n connections.
- Click anywhere in the Signal & noise history box to change the type of history being displayed. Successive clicks change the type from both signal and noise, to noise only, to signal only, and back to both signal and noise.



The status of your network connection is also indicated by the appearance of the utility icon . The number and color of the radio waves indicates the strength or weakness of the signal (see Table 1. Signal Strength Indicated by the Broadcom Wireless Utility Icon for details).

To view the network name (SSID), speed, signal strength rating, connection status, and the client IP address of the network connection, move your mouse pointer over the utility icon.

NOTE: On computers running Windows XP, you also can view the SSID, speed, signal strength rating, and connection status by moving your mouse pointer over the Windows Wireless Network Connection icon in the notification area.

Table 1. Signal Strength Indicated by the Broadcom Wireless Utility Icon

Icon Appearance	Indicated Received Signal Strength
	The signal strength is very good or excellent.
	The signal strength is weak. See Troubleshooting for suggested action.
	No signal is being received. See Troubleshooting for probable causes and suggested action.
	The radio is disabled or switched off. See Troubleshooting for suggested action.

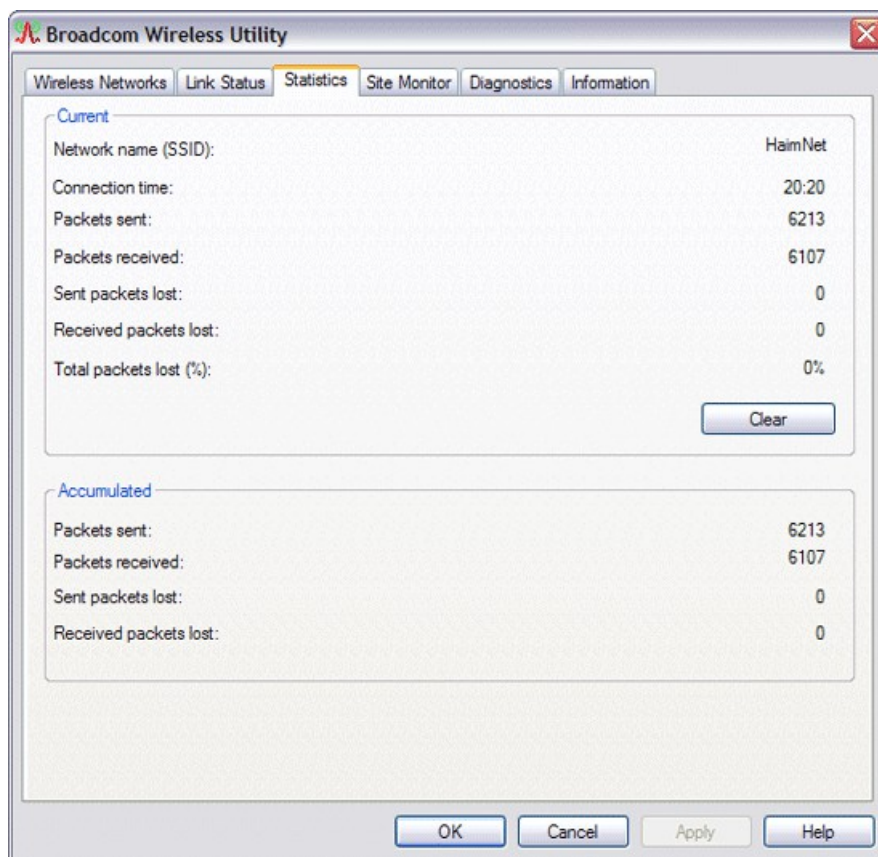
Statistics

On the Statistics tab under Current, the following current statistics are shown:

- Network name (SSID)
- Connection time
- Packets sent
- Packets received
- Sent packets lost
- Received packets lost
- Total packets lost (%)

Under Accumulated, the following accumulated statistics are shown:

- Packets sent
- Packets received
- Sent packets lost
- Received packets lost



Site Monitor

Basic Site Monitor

On the Site Monitor tab, the basic Site Monitor displays information about wireless routers/APs and ad hoc networks that are within range. To sort the list, click the column heading that shows the characteristic you want to sort by. For example, to sort by signal strength, click Signal .

To view information about a particular wireless router/AP or ad hoc network, click anywhere in the row that lists the wireless router/AP or ad hoc network. The network information is shown under Selected Network.

To view or change the network connection settings for a particular wireless router/AP or ad hoc network, right-click anywhere in the row that lists the wireless router/AP or ad hoc network, and then click Edit—if you have not yet

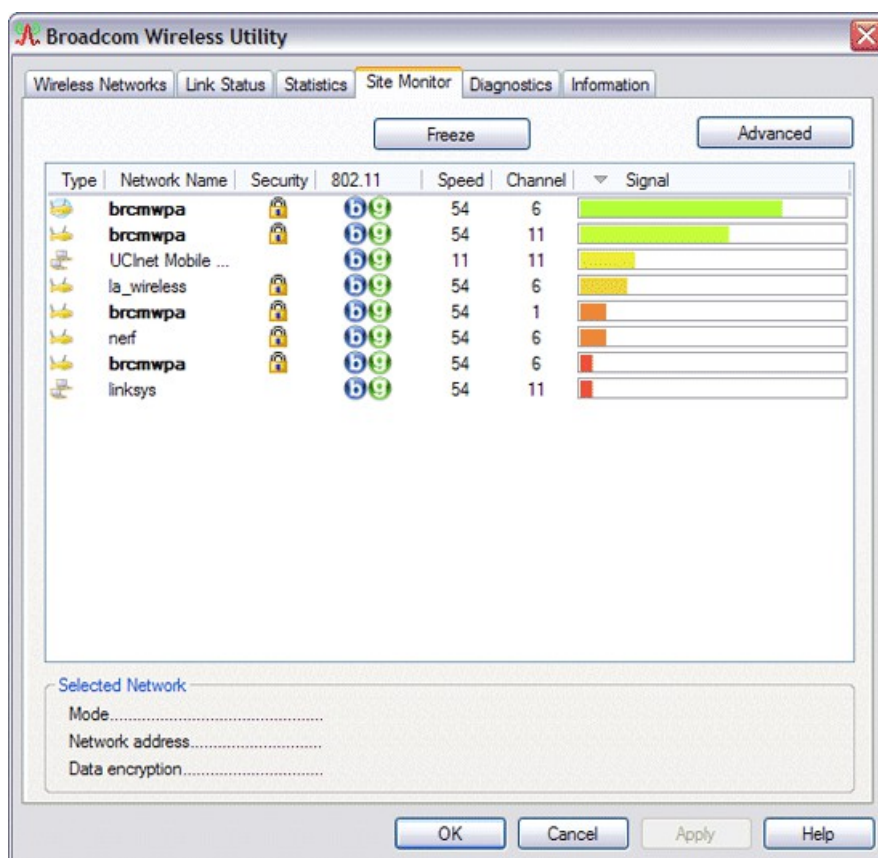
created a network connection profile for that particular wireless router/AP or ad hoc network and want to do so, click Add .

To see the information elements for a listed AP or ad hoc network, right-click anywhere in the row that lists the AP or ad hoc network, and then click Show Information Elements.

NOTES:

- Non broad casting networks are labeled (non broad casting) under Network Name.
- The network performance may be degraded while Site Monitor is displaying non broad casting APs to which you are not currently connected.
- The symbols under AP Band indicate IEEE 802.11a, IEEE 802.11b, IEEE 802.11g, IEEE 802.11n operation.

To see more detailed information about a particular wireless router/AP or ad hoc network, click anywhere in the row that lists the wireless router/AP or ad hoc network, and then click Advanced.



Advanced Site Monitor

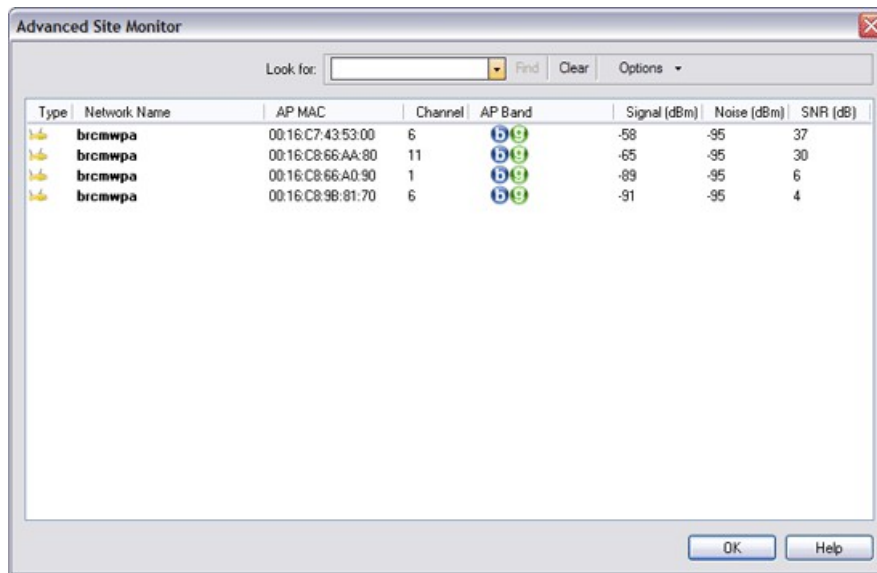
To save the activity log to a file, click the Options arrow, and then click Start Log.

You can adjust the time interval between scans by clicking the Options arrow, and then clicking either one of the preset values or clicking Customize to specify a different time interval.

NOTE: The network performance may be degraded while Site Monitor is displaying non broad casting networks to which you are not currently connected.

To view detailed network information for a single non broad casting network, type the network name in the Look for box, and then click Find.

To reset the site monitor to the broadcasting networks, click Clear.




The screenshot shows the 'Advanced Site Monitor' window. At the top, there is a search bar with the text 'Look for:' and buttons for 'Find', 'Clear', and 'Options'. Below this is a table with the following columns: Type, Network Name, AP MAC, Channel, AP Band, Signal (dBm), Noise (dBm), and SNR (dB). The table contains four rows of data, all with a Type of 'brcmwpn' and a Network Name of 'brcmwpn'. The AP MAC addresses are 00:16:C7:43:53:00, 00:16:C8:66:AA:80, 00:16:C8:66:A0:90, and 00:16:C8:9B:81:70. The Channels are 6, 11, 1, and 6 respectively. The AP Bands are all 'b/g'. The Signal (dBm) values are -58, -65, -89, and -91. The Noise (dBm) values are all -95. The SNR (dB) values are 37, 30, 6, and 4. At the bottom right of the window are 'OK' and 'Help' buttons.

Type	Network Name	AP MAC	Channel	AP Band	Signal (dBm)	Noise (dBm)	SNR (dB)
brcmwpn	brcmwpn	00:16:C7:43:53:00	6	b/g	-58	-95	37
brcmwpn	brcmwpn	00:16:C8:66:AA:80	11	b/g	-65	-95	30
brcmwpn	brcmwpn	00:16:C8:66:A0:90	1	b/g	-89	-95	6
brcmwpn	brcmwpn	00:16:C8:9B:81:70	6	b/g	-91	-95	4

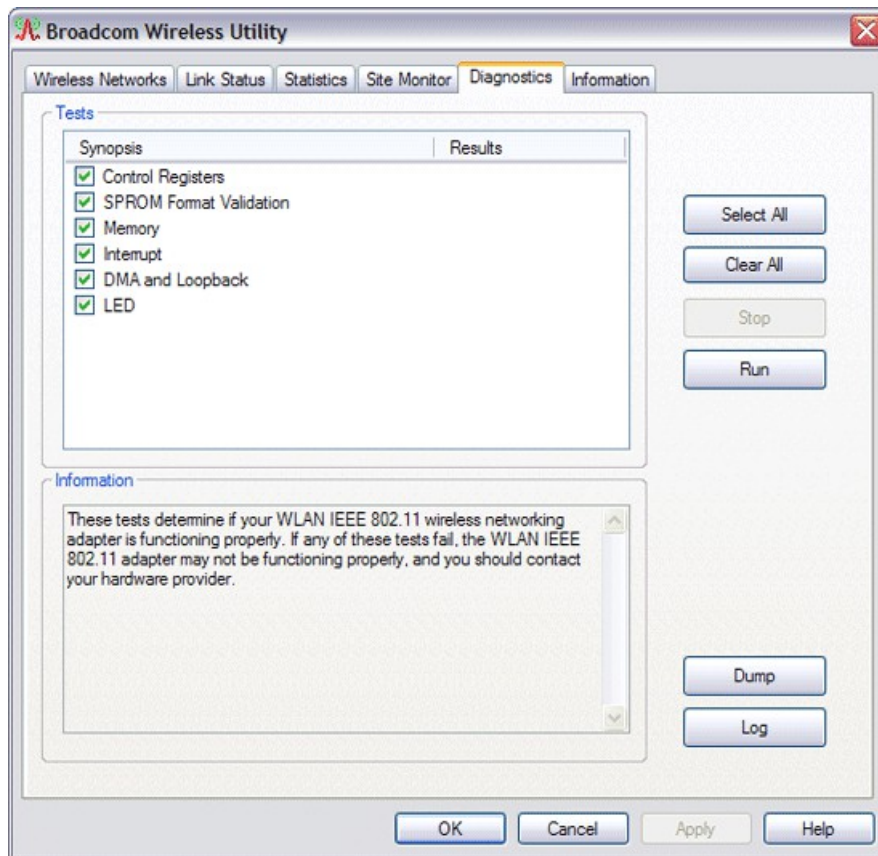
Diagnostics

On the Diagnostics tab, you can run a number of tests to determine if your wireless network adapter is functioning properly. Select the tests you want to run, and then click Run. For information about an individual test, look under Information before you click Run. To see the test results, look under Information after you click Run.

 **NOTE:** The network connection is lost when you run the tests. When the test run is over, your network connection is automatically reestablished.

Also, you can view a log of your wireless network events. To do so, click Log. Examples of wireless network events that are logged include:

- Initiation of user session
- Connecting to a network
- Disconnecting from current network
- Authentication mode being used
- Driver status
- Supplicant status
- New wireless device available
- Initializing wireless state machine
- Wireless utility is managing this adapter
- Wireless utility is not managing this adapter

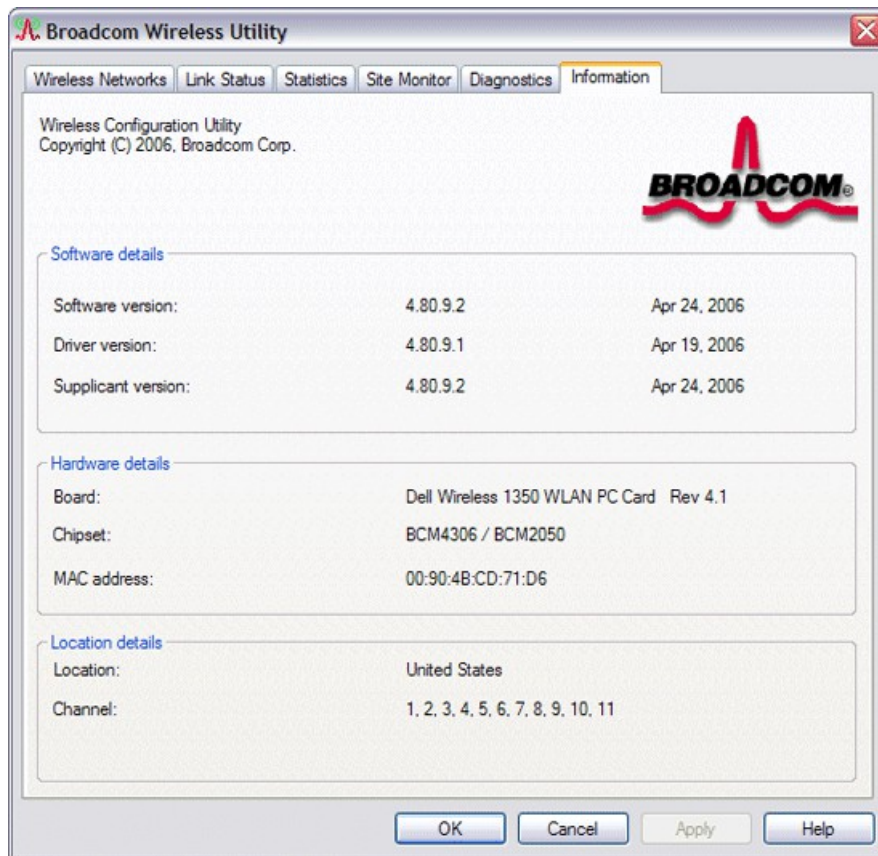


If your Broadcom 802.11 Network Adapter fails any of the diagnostics tests, go to <http://www.broadcom.com/> for technical support.

Information

The following information is displayed on the Information tab:

- Software details
- Hardware details
- Location details (shows the country for which the driver is installed and the channels supported for that location)



Wireless Network Connection Settings

The Wireless Network Connection Settings component is intended for use by advanced users or network administrators. You can use Wireless Network Connection Settings to create a connection profile for an advanced infrastructure network, a basic infrastructure network, or an ad hoc network (see "Connecting to an Advanced Network Using the Broadcom Wireless Utility").

Using the Broadcom BT Utility: Quick Start Guide

Step 1: Installing the Software

NOTE: This installation is required before you insert the module into the USB port of your computer.

1. Insert the Bluetooth USB Module installation compact disc (CD) into the CD-ROM or DVD drive of your computer.
2. If the Main Menu screen appears automatically, select Install software and click OK. If the Main Menu screen does not appear automatically, click Start, click Run, type `x:\setup.exe` (where x is the CD-ROM or DVD drive letter of your computer), and click OK.
3. Click Next, click Finish, and then restart your computer.
4. Right-click the Bluetooth icon in the taskbar notification area (system tray) and click Start Using Bluetooth. Follow the instructions provided by the Initial Bluetooth Configuration Wizard.

Step 2: Inserting the Module

Make sure that the Bluetooth USB Module is properly inserted inside your computer. If you started at Step 1: Installing the Software

The Found New Hardware Wizard detects and installs the device. When the installation is finished, you are ready to begin using the Bluetooth features of this computer.

If you skipped Step 1: Installing the Software, you are ready to begin using the Bluetooth features of this computer.

NOTE: Before you begin, however, please review the Bluetooth USB Module User's Guide. This document provides important information and instructions that will help you do the things you want to do with your Bluetooth enabled computer.

Glossary

Authentication A Bluetooth security feature that is used to verify identity; it requires a Bluetooth PIN Code from the remote device.

Authorization A Yes-or-No Bluetooth security feature that requires operator intervention to avoid having the connection time out and fail.

Bluetooth device Bluetooth enabled hardware such as a computer, printer, fax, mouse, keyboard, cell phone, headset, or PDA.

Regulatory Statements for BCM94398FCREF7X7 **Please refer to Broadcom OEM installation guide**

OEM Installation Guidance Document
For Broadcom 802.11be WLAN PCI-E Custom Combination Card
BCM94398FCREF7X7
FCC ID: QDS-BRCM1096

The Broadcom module is only offered for sale to a specific OEM manufacturer that incorporates this module design into a host system. The radio module is not for sale to end users and consumers.

Conditions on using BRCM regulatory approvals:

- A. OEM manufacturer must ensure that no changes are made to the Broadcom module and acknowledges that any modifications may invalidate regulatory approvals, or may necessitate notifications to the relevant regulatory authorities.
- B. OEM manufacturer is responsible for ensuring that antennas used with the product are of the same type, with same or lower gains as approved and providing antenna reports to Broadcom.
- C. OEM manufacturer is responsible for regression testing to accommodate changes to Broadcom's designs, new antennas, and portable RF exposure safety testing/approvals.
- D. The Broadcom module is only FCC authorized (certified) for the transmitter specific rule parts, FCC 15.407. OEM manufacturer is responsible for compliance to all other FCC rules that apply to the host.
- E. Host devices sold in the US and its territories must not be labeled with "Contains FCC ID: QDS-BRCM1096", unless the US country code has been programmed in the module.
- F. OEM manufacturer should perform additional verification/validation on supported modes and is responsible for validation testing of module + host.
- G. Appropriate labels must be affixed to the OEM Product that comply with applicable regulations in all respects.
- H. A user's manual or instruction manual must be included with the OEM product that contains the text as required by applicable law. Without limitation of the foregoing, an example (for illustration purposes only) of possible text to include is set forth below:

1. USA—Federal Communications Commission (FCC)

FCC COMPLIANCE STATEMENT:

This device complies with part 15 of the FCC Rules. Operation is subject to the following two conditions:

- (1) This device may not cause harmful interference, and (2) this device must accept any interference received, including interference that may cause undesired operation.

FCC Caution: Any changes or modifications not expressly approved by the party responsible for compliance could void the user's authority to operate this equipment.

System integrators must include the FCC ID on the end product.

FCC Radio-Frequency Exposure & Approval Conditions:

1. The antenna(s) used for this transmitter must not be collocated or operating in conjunction with any other

antenna or transmitter within a host device, except in accordance with FCC multi-transmitter product procedures. This requires that the antennas for the host system be installed so that they are a minimum of 20cm from persons. For systems where this 20cm cannot be ensured please consult with Broadcom to determine certification requirements.

2. The module grantee is responsible for providing the documentation to the system integrator on restrictions of use, for continuing compliance of the module including the maximum antenna gain (3.4dBi), minimum antenna gain (0dBi) and antenna type equivalent to Airgain model N60AGAU.
3. End user shall not have access to remove/replace antennas. Antenna connector is a unique I-PEX connector.
4. The host product manufacturer is responsible to meet FCC part 15 requirement on antenna usage.
5. The regulatory label on the final system must include the statement: "Contains FCC ID: QDS-BRCM1096" or using electronic labeling method as documented in KDB 784748.
6. The final system integrator must ensure there is no instruction provided in the user manual or customer documentation indicating how to install or remove the transmitter module except such device has implemented two-ways authentication between module and the host system.
7. The final host manual shall include the following regulatory statement: This device complies with Part 15 of the FCC Rules. Operation is subject to the following two conditions: (1) This device may not cause harmful interference, and (2) this device must accept any interference received, including interference that may cause undesired operation.


FCC Caution: Any changes or modifications not expressly approved by the party responsible for compliance could void the user's authority to operate this equipment.

8. In the 5.925-7.125 GHz band, client devices, except fixed client devices, must operate under the control of a standard power access point, indoor access point or subordinate devices; Subordinate devices must operate under the control of an indoor access point. In all cases, an exception exists for transmitting brief messages to an access point when attempting to join its network after detecting a signal that confirms that an access point is operating on a particular channel. Access points and subordinate devices may connect to other access points or subordinate devices. Client devices are prohibited from connecting directly to another client device.
9. Operation of transmitters in the 5.925-7.125 GHz band is prohibited for control of or communications with unmanned aircraft systems.
10. The certified WLAN module will be installed in mobile application.
11. A Client/subordinate device cannot provide a direct connection to source the internet from a wired or direct connection to other devices over a 6GHz air interface.
12. The host manufacturer should reference KDB Publication 996369 D04 Module Integration Guide.

file:///P:/User%20Manuals/WLANCard-UM302_LaLa/HTML/utility.htm

Using the Broadcom Wireless Utility: Broadcom AirForce™ 54g™ and Intensi-fi™ Wireless Network Adapter User Guide

Documents / Resources

	<p>BROADCOM BCM94398FCREF7X7 PCI-E Custom Card [pdf] User Guide BCM94398FCREF7X7 PCI-E Custom Card, BCM94398FCREF7X7, PCI-E Custom Card, Custom Card, Card</p>
---	---

References

-  [Broadcom Inc. | Connecting Everything](#)

Manuals+.