



BRIZO 65098LF Single Handle Lavatory Faucet Instruction Manual

[Home](#) » [BRIZO](#) » BRIZO 65098LF Single Handle Lavatory Faucet Instruction Manual 

Contents

- [1 BRIZO 65098LF Single Handle Lavatory Faucet](#)
- [2 Product Information](#)
- [3 Product Usage Instructions](#)
- [4 Specify Finish](#)
- [5 Lavatory Faucet Installation](#)
- [6 Metal Pop-Up](#)
- [7 Maintenance](#)
- [8 CLEANING AND CARE](#)
- [9 Limited Warranty on Brizo® Faucets](#)
- [10 Documents / Resources](#)
 - [10.1 References](#)

BRIZO®

BRIZO 65098LF Single Handle Lavatory Faucet



Product Information

- **Product Name:** Single Handle Lavatory Faucet
- **Model Number:** 100846
- **Manufacturer:** Brizo
- **Website:** www.brizo.com
- **Date of Revision:** September 15, 2022 (Rev. C)

Product Usage Instructions

1. Make Connections to Water Lines:

- Use 1/2 IPS faucet connections or use the supplied coupling nuts with 3/8 O.D. ball-nose risers.
- Use two wrenches when tightening and do not over-tighten.

2. Metal Pop-Up Installation:

1. Remove the stopper and flange.
2. Screw the nut all the way down and push the washer and gasket down.
3. Remove the tailpiece from the body, add plumber tape, and replace the tailpiece.
4. Apply silicone to the underside of the flange, insert the body into the sink, and screw the flange into the body.
5. The pivot nut must face the faucet. Pull the assembly down firmly and hold it in place without twisting.
6. Tighten the nut/washer/gasket, and clean off excess silicone without twisting.
7. Remove the pivot nut. Install the horizontal rod and stopper as removable or non-removable. Hand-tighten the pivot nut.

8. Attach the horizontal rod to the strap using a clip. Insert the lift rod into the strap and tighten the screw.
Connect the assembly to the drain.

3. Maintenance:

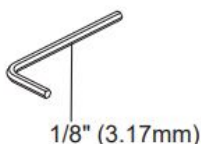
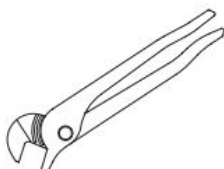
- If the faucet leaks from under the handle, remove the handle and cap. Ensure the bonnet nut is tight and replace the valve cartridge.
- If the faucet leaks from the spout outlet shut off water supplies and replace the valve cartridge.
- If the water flow from the faucet reduces over time, clean the flow regulator or supply strainers by removing the handle and cap, unscrewing the bonnet nut, removing the valve cartridge, locating the flow restrictor, and removing any debris caught in it using a small soft brush. Reinstall in reverse order and check spout flow.

4. Flush the System and Check for Leaks:

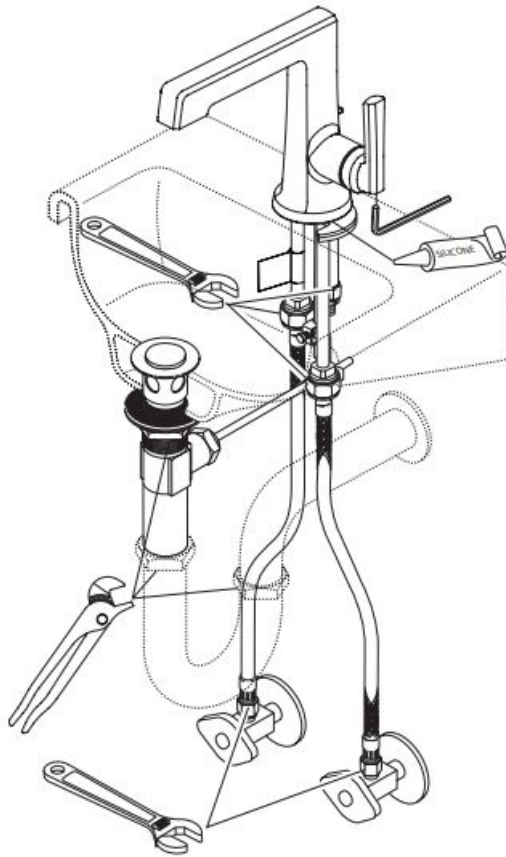
1. Turn the faucet handle all the way on.
2. Turn on hot and cold water supplies and flush water lines for one minute.
3. **Important:** This flushes away any debris that could cause damage to internal parts.

Specify Finish

You may need

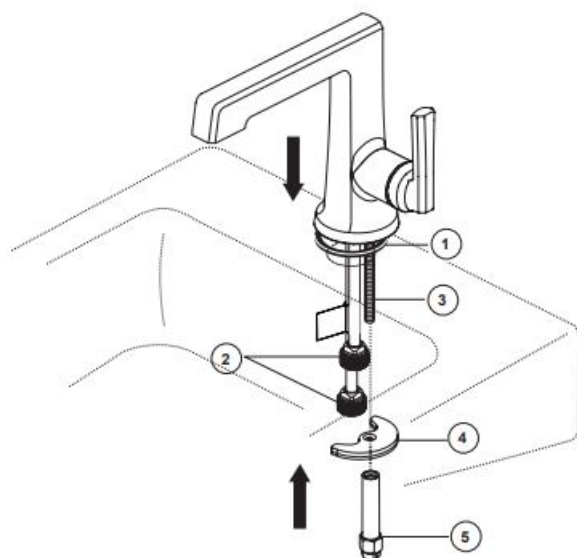
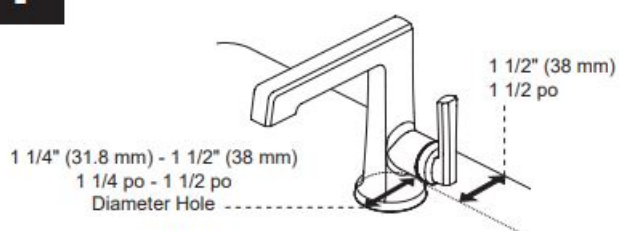
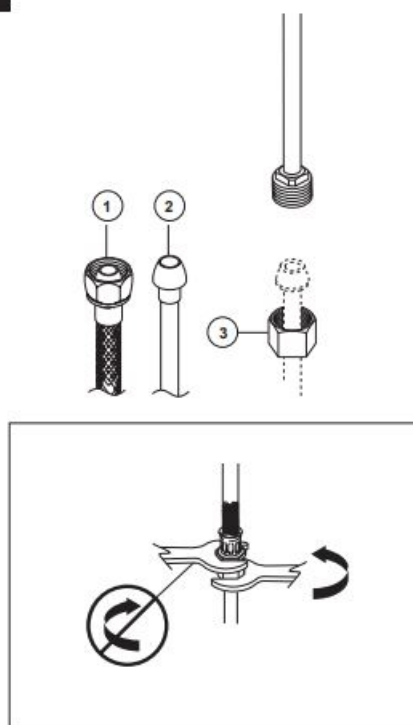


- For easy installation of your Brizo® faucet you will need:
- To READ ALL the instructions completely before beginning.
- To READ ALL warnings, care, and maintenance information.
- To purchase the correct water supply hook-up.



Lavatory Faucet Installation

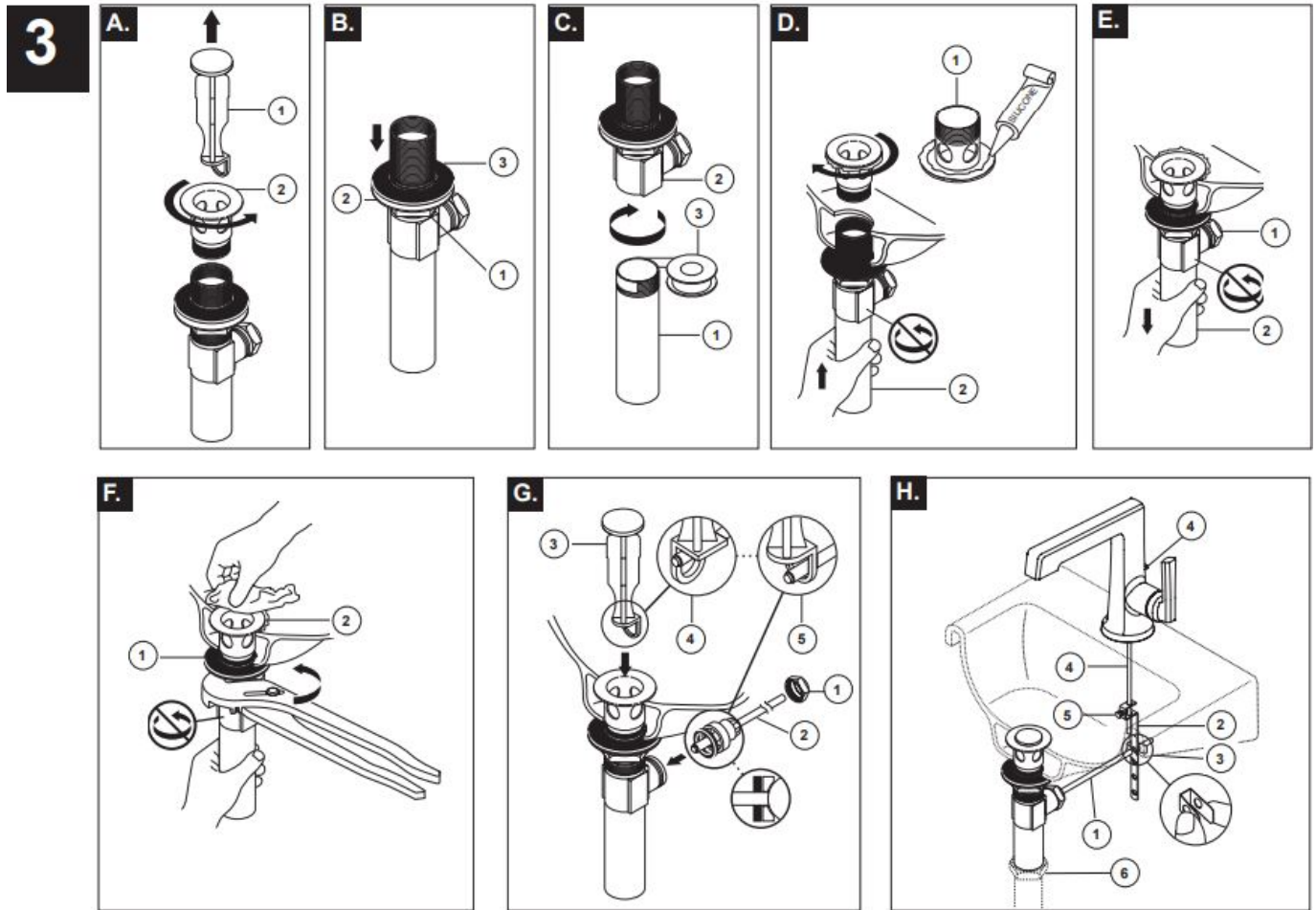
Note: This faucet fits 1 1/4" min. mounting hole size. When drilling a new hole, 1 1/2" is recommended. The back edge of the faucet body must be at least 1 1/2" inches from the backsplash on wall in order to allow the lift rod to function properly. Slide gasket (1) up over tubes (2) and mounting stud (3) and seat onto bottom of faucet. Place tubes and mounting stud through mounting hole and position faucet on sink. Option: If surface of sink is uneven, use silicone under the spout base or gasket. Place metal bracket (4) over mounting stud (3) under sink. Secure with mounting nut (5). Tighten securely but do not overtighten.

1**2**

MAKE CONNECTIONS TO WATER LINES

- Use 1/2" IPS faucet connections (1), or use supplied coupling nuts (3) with 3/8" O.D. ball-nose risers (2).
- Use two wrenches when tightening. Do not overtighten.

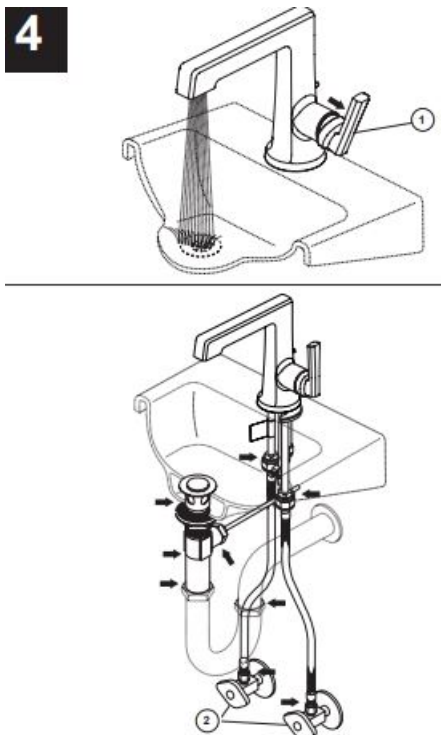
Metal Pop-Up



- **A.** Remove stopper (1) and flange (2).
- **B.** Screw nut (1) all the way down. Push washer (2) and gasket (3) down.
- **C.** Remove tailpiece (1) from body (2), add plumber tape (3), replace tailpiece.
- **D.** Apply silicone to underside of flange (1). Insert body (2) into sink. Screw flange (1) into body (2).
- **E.** Pivot nut (1) must face faucet. Pull assembly (2) down firmly and hold in place. **DO NOT TWIST.**
- **F.** Tighten nut/washer/gasket (1), clean off excess silicone (2). **DO NOT TWIST**
- **G.** Remove pivot nut (1). Install horizontal rod (2) and stopper (3) as removable (4) or nonremovable (5). Hand tighten pivot nut (1).
- **H.** Attach horizontal rod (1) to strap (2) using clip (3). Insert lift rod (4) into strap and tighten screw (5). Connect assembly to drain (6).

Flush the System and Check for Leaks

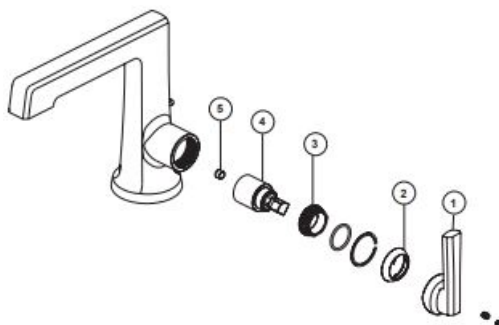
- Turn faucet handle (1) all the way on. Turn on hot and cold water supplies (2) and flush water lines for one minute. Important: This flushes away any debris that could cause damage to internal parts.
- Check all connections at arrows for leaks. Retighten if necessary, but do not overtighten.



Maintenance

If faucet leaks from under handle:

- Remove handle (1) and cap (2). Note: To remove cap (2), pry it off with your fingernail or a small knife. Ensure bonnet nut (3) is tight.
- Replace valve cartridge (4) RP92349*.
- If faucet leaks from spout outlet: SHUT OFF WATER SUPPLIES.
- Replace valve cartridge (4) RP92349*.
- If water flow from the faucet reduces over time, the flow regulator or supply strainers may have become partially blocked. To clean:
 - **A.** Remove handle (1) and cap (2).
 - **B.** Unscrew bonnet nut (3) and remove valve cartridge (4). Locate the flow restrictor (5) and check for any debris caught in the restrictor. Use a small soft brush to remove any of the debris.
 - **C.** Reinstall in reverse order.
 - **D.** Turn on handles and check spout flow.



CLEANING AND CARE

Care should be given to the cleaning of this product. Although its finish is extremely durable, it can be damaged by harsh abrasives or polish. To clean, simply wipe gently with a damp cloth and blot dry with a soft towel.

Limited Warranty on Brizo® Faucets

- **Parts and Finish.** All parts (other than electronic parts, air switch power modules, batteries, and parts not supplied by Brizo Kitchen and Bath Company) and finishes of Brizo® faucets purchased from authorized Brizo sellers are warranted to the original consumer purchaser to be free from defects in material and workmanship for as long as the original consumer purchaser owns the home in which the faucet was first installed. For commercial purchasers, (a) the warranty period is ten (10) years for multi-family residential applications and (b) five (5) years for all other commercial uses, in each case from the date of purchase. For purposes of this warranty, the term “multi-family residential application” refers to the purchase of the faucet from an authorized Brizo seller by a purchaser who owns but does not live in the residential dwelling in which the faucet is initially installed, such as in a rented or leased single unit or multi-unit detached home (duplex or townhome), or a condominium, apartment building or community living center. The following installations are not considered multi-family residential applications, are excluded from the 10-year warranty, and are subject to the 5-year warranty: industrial, institutional or other business premises, such as a dormitory, hospitality premises (hotel, motel, or extended stay location), airport, educational facility, long- or short-term healthcare facility (hospital, rehabilitation center, nursing, assisted or staged-care living unit), public space or common area.
- **Electronic Parts and Batteries (if applicable).** Electronic parts (other than air switch power modules and batteries), if any, in Brizo® faucets purchased from authorized Brizo sellers are warranted to the original consumer purchaser to be free from defects in material and workmanship for five (5) years from the date of purchase or, for commercial users, for one (1) year from the date of purchase. No warranty is provided on batteries.
- **Air Switch Power Module.** The electronic power module of Brizo® air switches purchased from authorized Brizo sellers is warranted to the original consumer purchaser to be free from defects in material and workmanship for two (2) years from the date of purchase or, for commercial users, for one (1) year from the date of purchase.
- **What We Will Do.** Brizo Kitchen & Bath Company will repair or replace, free of charge, during the applicable warranty period (as described above), any part or finish that proves defective in material and/or workmanship under normal installation, use, and service. Brizo Kitchen & Bath Company may, in its sole discretion, use new, refurbished or recertified parts or products for such repair or replacement. If repair or replacement is not practical, Brizo Kitchen & Bath Company may elect to refund the purchase price in exchange for the return of the product.
- **These are your exclusive remedies.**
- **What Is Not Covered?** Because Brizo Kitchen and Bath Company is unable to control the quality of Brizo products sold by unauthorized sellers unless otherwise prohibited by law, this warranty does not cover Brizo products purchased from unauthorized sellers (visit [Brizo.com](https://www.brizo.com) to see a list of our Authorized Online Resellers).
- Any labor charges incurred by the purchaser to repair, replace, install or remove this product are not covered by this warranty. Brizo Kitchen & Bath Company shall not be liable for any damage to the product resulting from reasonable wear and tear, outdoor use, misuse (including use of the product for an unintended application), freezing water, abuse, neglect, or improper or incorrectly performed assembly, installation, maintenance or repair, including failure to follow the applicable care and cleaning instructions. Customized components purchased by the consumer or commercial user and installed into a Brizo product, and any damage resulting from removal or improper installation of such components, are not covered by this warranty.
- Brizo Kitchen & Bath Company recommends using a professional plumber for all installation and repair of

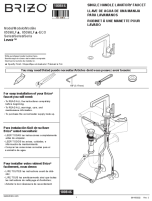
faucets. We also recommend that you use only genuine Brizo® replacement parts.

- What You Must Do To Obtain Warranty Service or Replacement Parts. A warranty claim may be made and replacement parts may be obtained by calling 1-877-345-BRIZO (2749) or by contacting us by mail or online as follows (please include your model number and date of purchase):

In the United States and Mexico: In Canada:

- Brizo Kitchen & Bath Company Masco Canada Limited, Plumbing Group 55 E. 111th Street Technical Service Centre
- Indianapolis, IN 46280 350 South Edgeware Road
- **Attention:** Warranty Service St. Thomas, Ontario, Canada N5P 4L1 <https://www.brizo.com/customer-support/contact-us> <https://www.brizo.com/customer-support/contact-us> Proof of purchase (original sales receipt) from the original purchaser must be made available to Brizo Kitchen & Bath Company for all warranty claims unless the purchaser has registered the product with Brizo Kitchen & Bath Company. This warranty applies only to Brizo® faucets installed in the United States of America, Canada, and Mexico.
- Limitation on Duration of Implied Warranties. Please note that some states/provinces (including Quebec) do not allow limitations on how long an implied warranty lasts, so the below limitations may not apply to you.
- TO THE MAXIMUM EXTENT PERMITTED BY APPLICABLE LAW, ANY IMPLIED WARRANTY, INCLUDING THE IMPLIED WARRANTIES OF MERCHANTABILITY AND OF FITNESS FOR A PARTICULAR PURPOSE, IS LIMITED TO THE STATUTORY PERIOD OR THE DURATION OF THIS WARRANTY, WHICHEVER IS SHORTER.
- Limitation of Special, Incidental or Consequential Damages. Please note that some states/provinces (including Quebec) do not allow the exclusion or limitation of special, incidental, or consequential damages, so the below limitations and exclusions may not apply to you.
- TO THE MAXIMUM EXTENT PERMITTED BY APPLICABLE LAW, THIS WARRANTY DOES NOT COVER, AND BRIZO KITCHEN & BATH COMPANY SHALL NOT BE LIABLE FOR ANY SPECIAL, INCIDENTAL, OR CONSEQUENTIAL DAMAGES (INCLUDING LABOR CHARGES TO REPAIR, REPLACE, INSTALL OR REMOVE THIS PRODUCT), WHETHER ARISING OUT OF BREACH OF ANY EXPRESS OR IMPLIED WARRANTY, BREACH OF CONTRACT, TORT, OR OTHERWISE. BRIZO KITCHEN & BATH COMPANY SHALL NOT BE LIABLE FOR ANY DAMAGE TO THE FAUCET RESULTING FROM REASONABLE WEAR AND TEAR, OUTDOOR USE, MISUSE (INCLUDING USE OF THE PRODUCT FOR AN UNINTENDED APPLICATION, FREEZING WATER, ABUSE, NEGLIGENCE OR IMPROPER OR INCORRECTLY PERFORMED ASSEMBLY, INSTALLATION, MAINTENANCE OR REPAIR, INCLUDING FAILURE TO FOLLOW THE APPLICABLE INSTALLATION, CARE AND CLEANING INSTRUCTIONS. Notice to residents of the State of New Jersey: The provisions of this warranty, including its limitations, are intended to apply to the fullest extent permitted by the laws of the State of New Jersey.
- Additional Rights. This warranty gives you specific legal rights, and you may also have other rights which vary from state/province to state/province.
- This is Brizo Kitchen & Bath Company's exclusive written warranty, and the warranty is not transferable.
- If you have any questions or concerns regarding our warranty, please contact us as provided above or visit our website at www.brizo.com.

Documents / Resources

	<p>BRIZO 65098LF Single Handle Lavatory Faucet [pdf] Instruction Manual 65098LF, 65098LF, 65098LF Single Handle Lavatory Faucet, 65098LF, Single Handle Lavatory Faucet, Handle Lavatory Faucet, Lavatory Faucet, Faucet</p>
--	--

References

- [B Brizo](#)
- [B Brizo](#)
- [B Contact Us : Customer Support : Brizo](#)

Manuals+,