



BRITA 87340 Hub Instant Powerful Countertop Water Filter System Instruction Manual

[Home](#) » [BRITA](#) » **BRITA 87340 Hub Instant Powerful Countertop Water Filter System Instruction Manual** 

BRITA 87340 Hub Instant Powerful Countertop Water Filter System Instruction Manual



Contents

- 1 Cheers for choosing Brita over bottled water!
- 2 IMPORTANT SAFEGUARDS
- 3 SAVE THESE INSTRUCTIONS
- 4 Other Consumer Safety Information
- 5 Technical Specifications
- 6 Performance Data Sheet
- 7 Parts and Features
- 8 Before Initial Setup:
- 9 FILTER LIFE Light Color
- 10 How to Change Water Reservoir Location
- 11 How to Install and Flush Water Filter (and Replace Filters)
- 12 How to Dispense Filtered Water
- 13 How to Reset FILTER LIFE Light
- 14 Care and Cleaning
- 15 Troubleshooting
- 16 Limited Warranty
- 17 Documents / Resources
 - 17.1 References
- 18 Related Posts

Cheers for choosing Brita over bottled water!

Thank you and welcome to your new Brita Hub™! We hope you will enjoy Brita's best filter ever, and appreciate the care and attention we have put into every detail of your instant, powerful countertop filtration device.

At Brita, our goal is to make water better* for people and the planet**, and we thank you for joining the fight against single-use plastic bottle waste. Your Brita Hub™ is designed to fit your home with a customizable reservoir configuration and to make drinking healthier† water easier with instant filtration of 70+ contaminants at the tap of a button. This Use and Care Manual will provide you with the information you need to become familiar with your Brita Hub's™ care and operation.

We appreciate your choice of a Brita Hub™. For more information about how your purchase is helping to protect our planet, visit us online at Brita.com.

*See certifications.

**Each Brita Hub filter replaces up to 900 16.9-oz single-use plastic water bottles. †Based on health contaminant reduction per IAPMO and WQA certifications. Substances reduced may not be in all users' water.

IMPORTANT SAFEGUARDS

This is not a toy or children's product. This product is not designed or intended for use by children age 12 or younger. Adult supervision is necessary when any appliance is used by or near children.

When using electrical appliances, basic safety precautions should always be followed to reduce the risk of fire, electric shock, and/or injury to persons, including the following

1. Read all instructions.
2. This appliance is not intended for use by persons (including children) with reduced physical, sensory, or mental capabilities, or lack of experience and knowledge, unless they are closely supervised and instructed concerning use of the appliance by a person responsible for their safety.

3. Close supervision is necessary when any appliance is used by or near children. Cleaning and user maintenance shall not be made by children without supervision. Children should be supervised to ensure that they do not play with the appliance.
4. To protect against risk of electrical shock, do not put power cord, plug, or base assembly in water or other liquid
5. Turn the appliance off, then unplug from outlet when not in use, before putting on or taking off parts, and before cleaning. To unplug, grasp the plug and pull from the outlet. Never pull from the power cord.
6. Do not operate any appliance with a damaged supply cord or plug, or after the appliance malfunctions or has been dropped or damaged in any manner. Supply cord replacement and repairs must be conducted by the manufacturer, its service agent, or similarly qualified persons in order to avoid a hazard. Contact Customer Service for information on examination, repair, or adjustment as set forth in the Limited Warranty.
7. The use of attachments, including filters, not recommended or sold by the appliance manufacturer may cause fire, electric shock, or injury to persons.
8. Do not use outdoors.
9. Do not let power cord hang over edge of table or counter or touch hot surfaces, including stove.
10. Do not place on or near a hot gas or electric burner, or in a heated oven.
11. Do not use appliance for other than intended purpose.
12. Water reservoir is for water only. Do not fill with any other liquid. Do not overfill the water reservoir with water.
13. Always place the unit on a level, stable, and water-resistant surface.

SAVE THESE INSTRUCTIONS

Other Consumer Safety Information

This appliance is intended for household use only

⚠ WARNING Electrical Shock Hazard: This appliance is provided with a polarized plug (one wide blade) to reduce the risk of electric shock. The plug fits only one way into a polarized outlet. Do not defeat the safety purpose of the plug by modifying the plug in any way or by using an adapter. If the plug does not fit fully into the outlet, reverse the plug. If it still does not fit, have an electrician replace the outlet.

The length of the power cord used on this appliance was selected to reduce the hazards of becoming tangled in or tripping over a longer cord. If a longer cord is necessary, an approved extension

cord may be used. The electrical rating of the extension cord must be equal to or greater than the rating of the appliance. A common 18-gauge household extension cord is rated for 600 watts and this appliance uses 29 watts. Care must be taken to arrange the extension cord so that it will not drape over the countertop or tabletop where it can be pulled on by children or accidentally tripped over.

To avoid an electrical circuit overload, do not use another high-wattage appliance on the same circuit with this appliance

Technical Specifications

Filter capacity: Approximately 120 gallons (454 liters)

Rated service flow: Up to 0.44 gal/min (1.6 L/min)

Wattage: 29 W

Pump pressure range: 15–70 PSI

Water minimum temperature: 33°F (1°C)

Water maximum temperature: 90°F (32°C)

NOTE: Filter is not to be used with hot water.

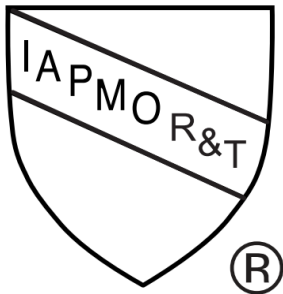
Performance Data Sheet

The replacement filter model number is CT01. See everything Brita filters out. Scan the QR code or visit brita.com/performance-data.



Water reservoir is for municipally treated tap water only. Do not use with water that is microbiologically unsafe or of unknown quality without adequate disinfection before or after the system

Brita Hub™ Filter (Model #CT01) has been certified by IAPMO R&T in System Model 87340 against NSF/ ANSI Standard 53 for the reduction of contaminants specified on the Performance Data Sheet.



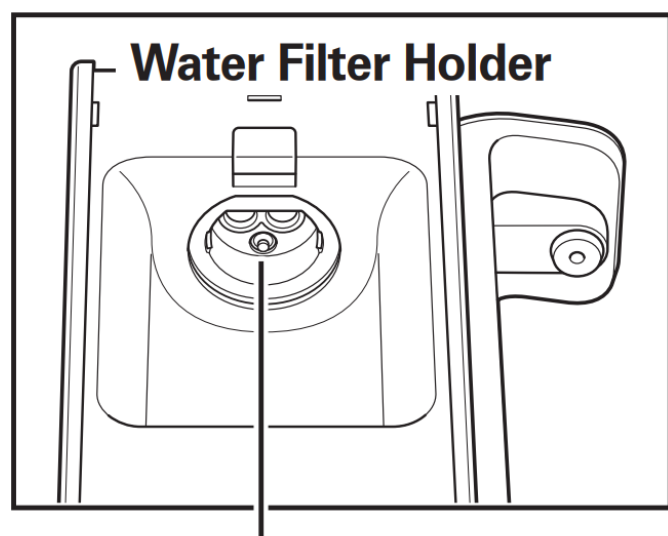
The Brita Hub™ Filter (Model #CT01) has been certified by WQA in System Model 87340 against NSF/ANSI Standards 42, 53, and 401 for the reduction of contaminants specified on the Performance Data Sheet.



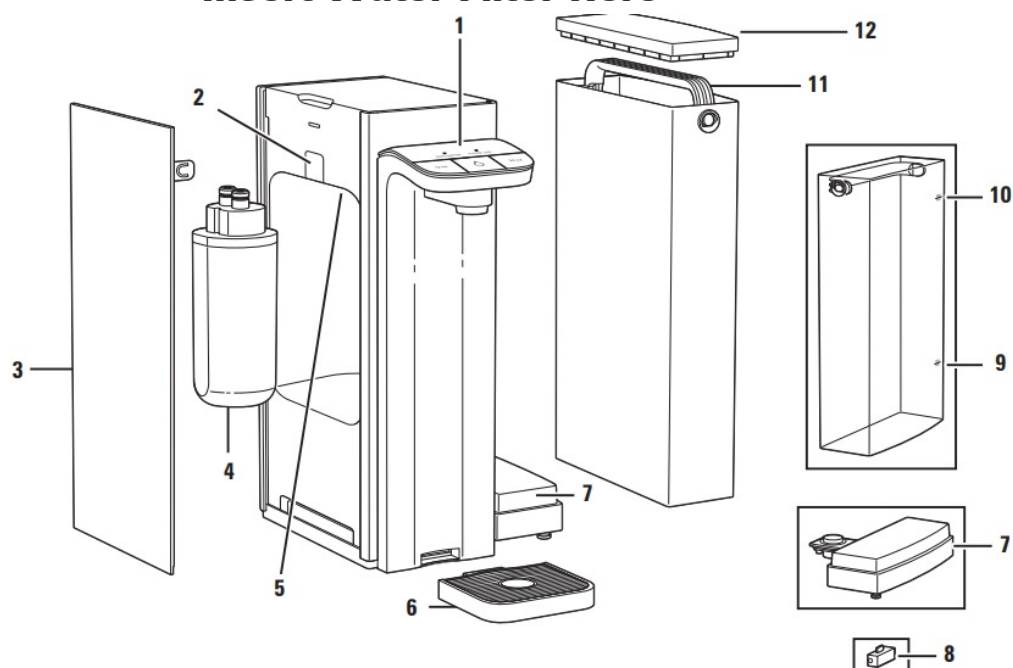
Parts and Features

To order parts, visit: [Brita.com/thehub](https://brita.com/thehub)

1	Control Panel
2	Water Filter Eject Button
3	Filter Access Panel
4	Replaceable Water Filter
5	Water Filter Holder
6	Removable Drip Tray
7	Water Reservoir Base
8	Spacer for customizable configuration (on right side or back)
9	MIN Fill Line (20 oz)
10	MAX Fill Line (96 oz)
11	Removable Water Reservoir with Handle
12	Water Reservoir Lid



Insert Water Filter Here



Before Initial Setup:

Please follow the instructions below before setting up your Brita Hub™

Before first use: Wash Water Reservoir, Lid, and Drip Tray in hot, soapy water. Rinse and dry.

NOTE: Place Brita Hub™ on a flat surface out of direct sunlight to avoid algae growth in Water Reservoir

FILTER LIFE Light Color

The FILTER LIFE light will illuminate as you are dispensing water to indicate when it's time to replace your Brita Hub™ filter.

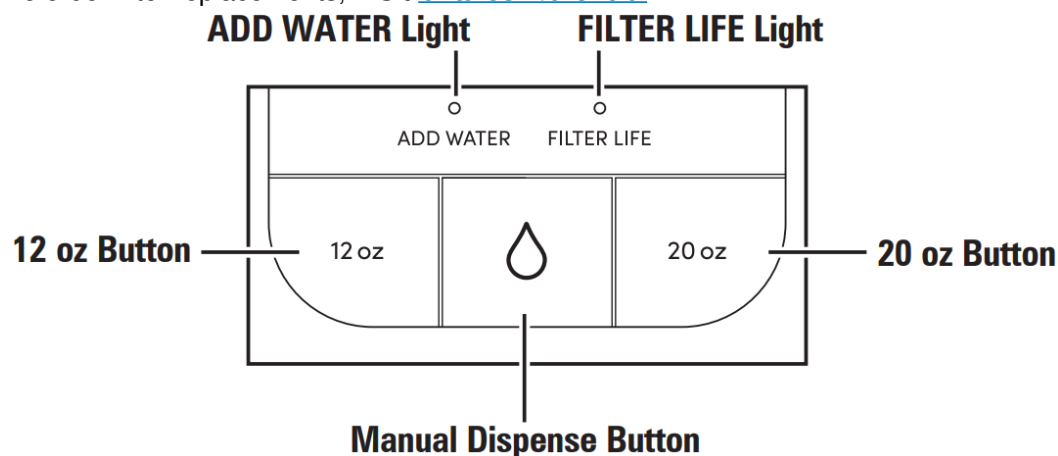
Green: Filter life is sufficient (illuminates during approximately 0-100 gallons of water dispensed).

Yellow: You've filtered approximately 100 gallons of water; replace your filter soon (illuminates during approximately 100-120 gallons dispensed).

Red: You've filtered approximately 120 gallons of water; it's time to replace your filter (illuminates during approximately 120-130 gallons dispensed).

Flashing red: You're way past your filter's useful life. It's seriously time to replace your filter to keep reducing 70+ contaminants (illuminates if filter hasn't been replaced after approximately 130 gallons). Light will continue to flash even after dispensing.

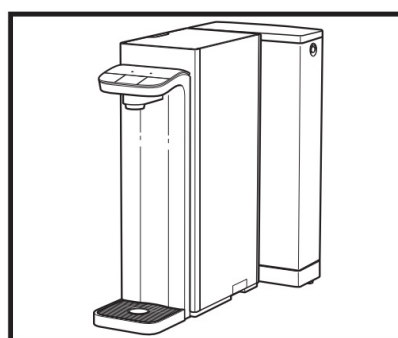
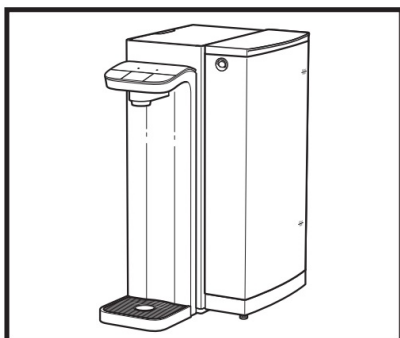
To order filter replacements, visit brita.com/thehub.



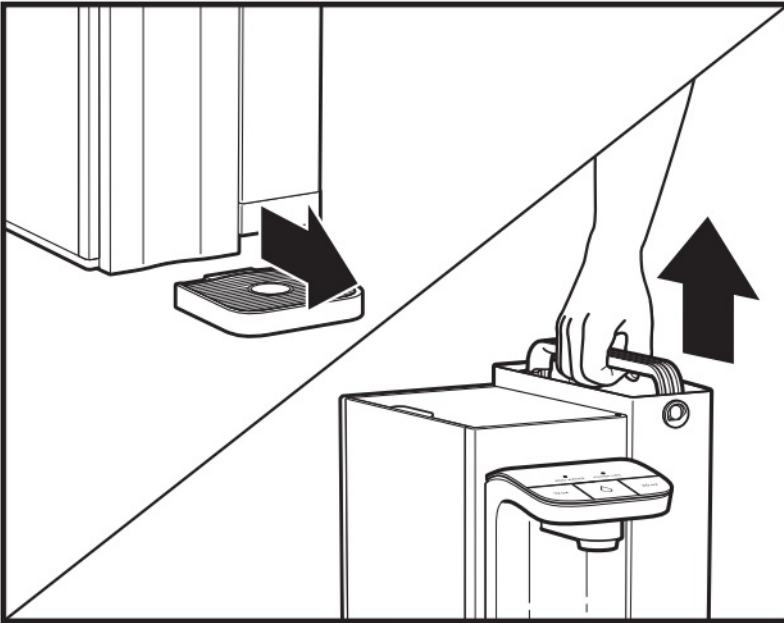
How to Change Water Reservoir Location

Determine the Water Reservoir location that best suits your space: Right side or back of Brita Hub™. Your Brita Hub™ is initially set to the right side configuration. If that's your preferred configuration, no need to follow the steps below!

For best results, we recommend you select your configuration before first use

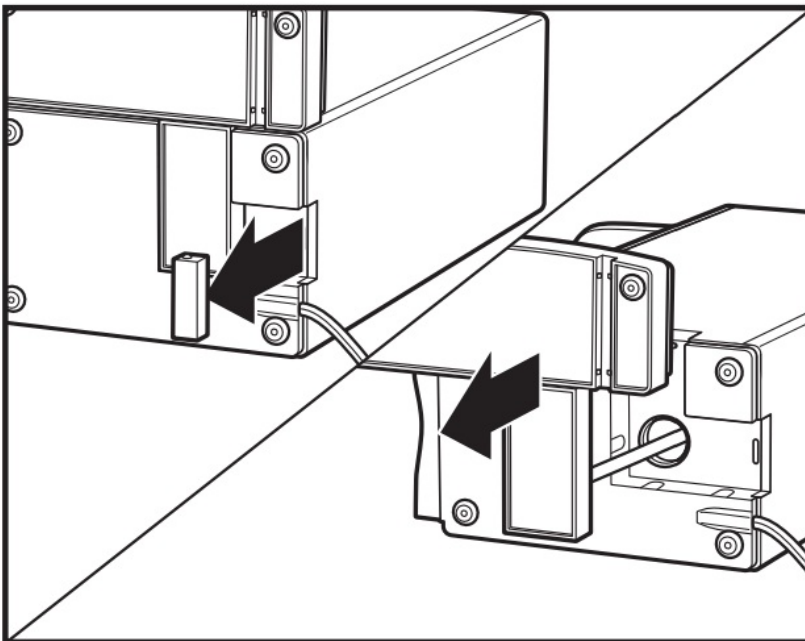


1. Unplug power cord from electrical outlet. Slide out Drip Tray, remove Water Reservoir Lid and lift Water Reservoir by Handle to remove from Base. If changing the configuration after already using your Brita Hub™, make sure you've emptied any remaining water from Water Reservoir and set it aside.

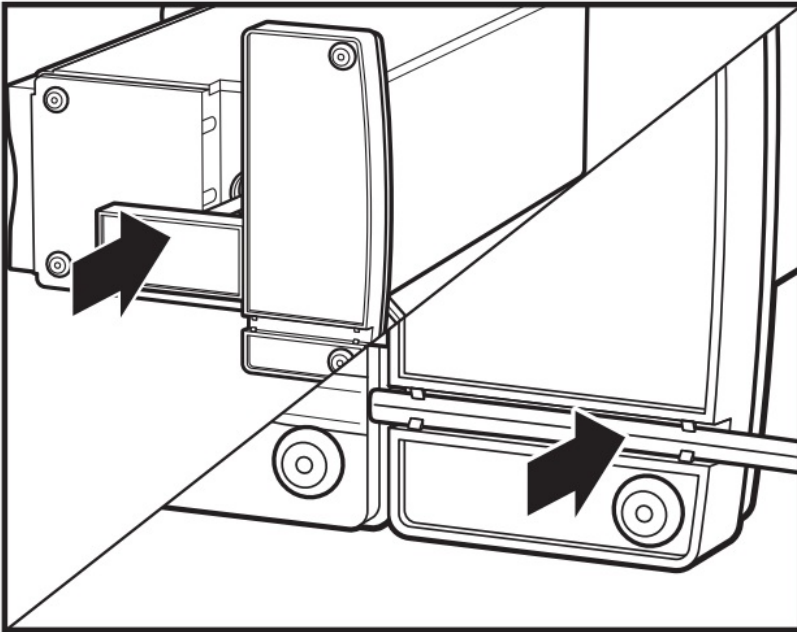


2. Lay Brita Hub™ on left side. Locate Spacer on back of Hub and pull towards you to remove. Gently pull down on Water Reservoir Base to remove. Do not attempt to remove attached Hose.

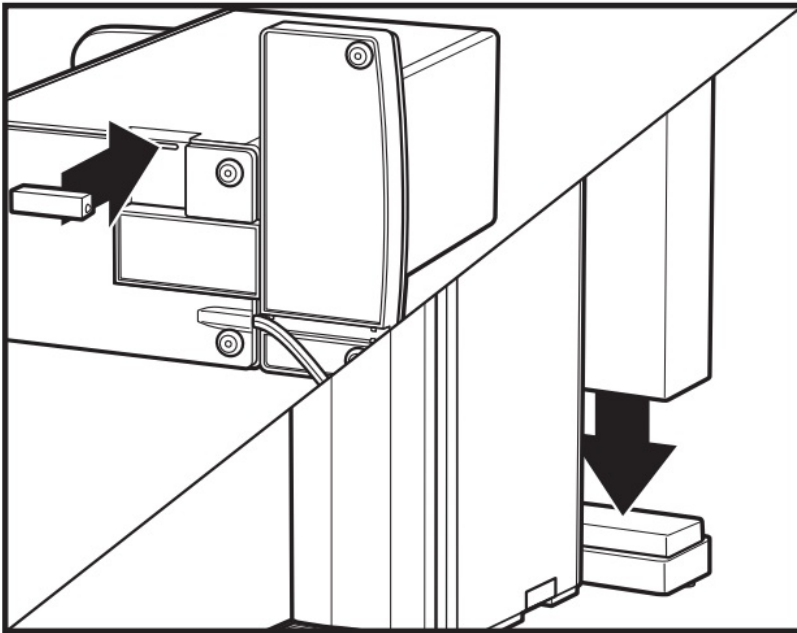
NOTE: Water might leak onto countertop if Hub has been used.



3. While keeping the power cord out of the way, align opening on back of Hub with Water Reservoir Base. Push up to snap Water Reservoir Base into place. Thread power cord through power cord holder on bottom of Water Reservoir Base.

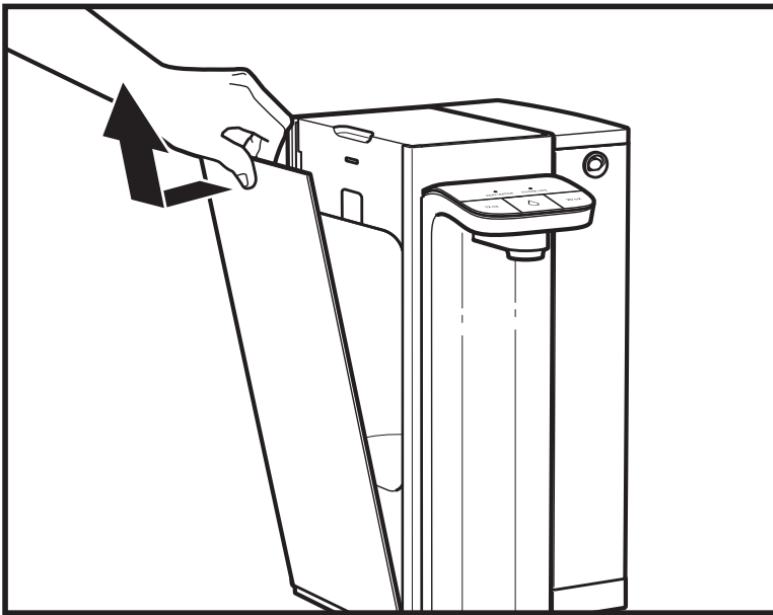


4. Push Spacer into opening on right side of Hub. Move Hub upright onto countertop. Hold Water Reservoir flat side towards Hub, and place onto Water Reservoir Base, aligning opening on Water Reservoir bottom with opening on Water Reservoir Base. Slide Drip Tray into place.

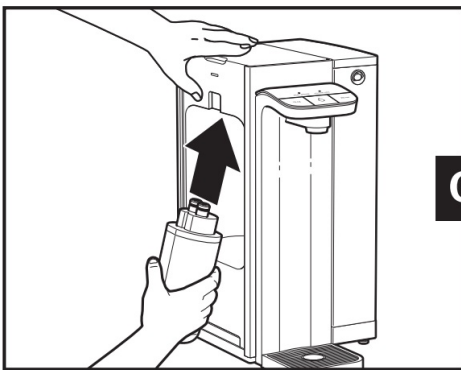


How to Install and Flush Water Filter (and Replace Filters)

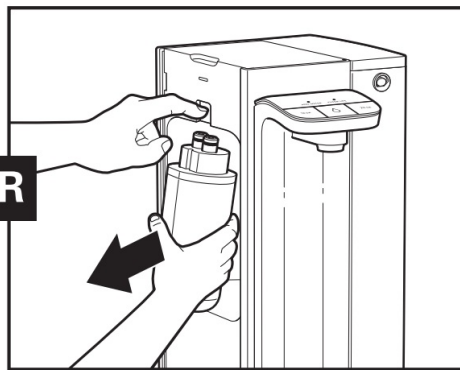
1. Unplug. To remove Filter Access Panel on left side of Brita Hub™: Place fingers into notch at top-left side of Hub, then pull panel out and lift up. Remove filter from wrapper.



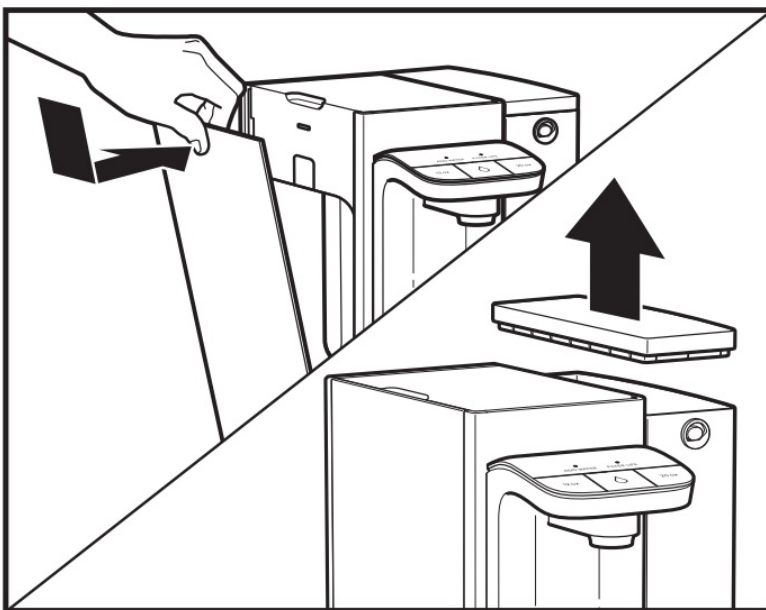
2. Place hand on top of Brita Hub™ to steady while inserting new Water Filter. To insert Water Filter: Using other hand, hold Water Filter with Brita logo facing you, then insert and push top end of Filter into Water Filter Holder (see page 5) until you hear 2 clicks to ensure Filter is fully inserted.
3. OR To remove used Water Filter, hold sides of Water Filter with one hand while pressing Eject Button, pull straight down and dispose or recycle with TerraCycle. Visit brita.com/recycling to learn more



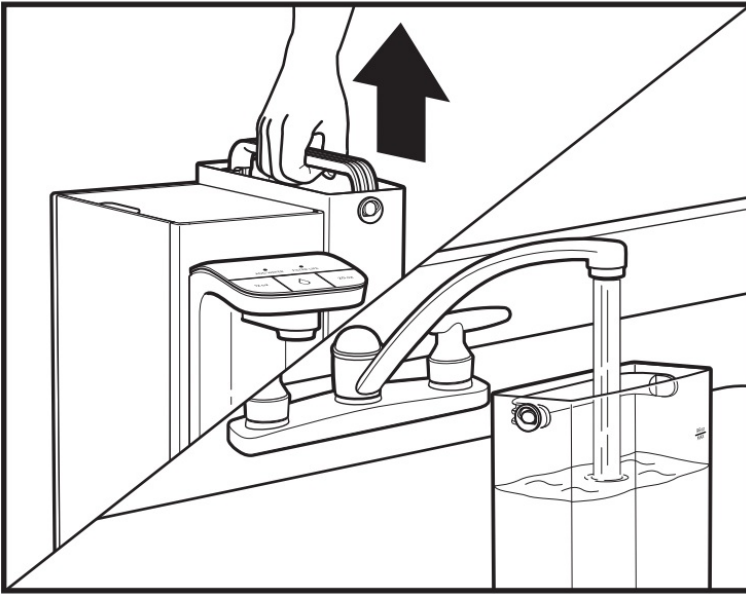
OR



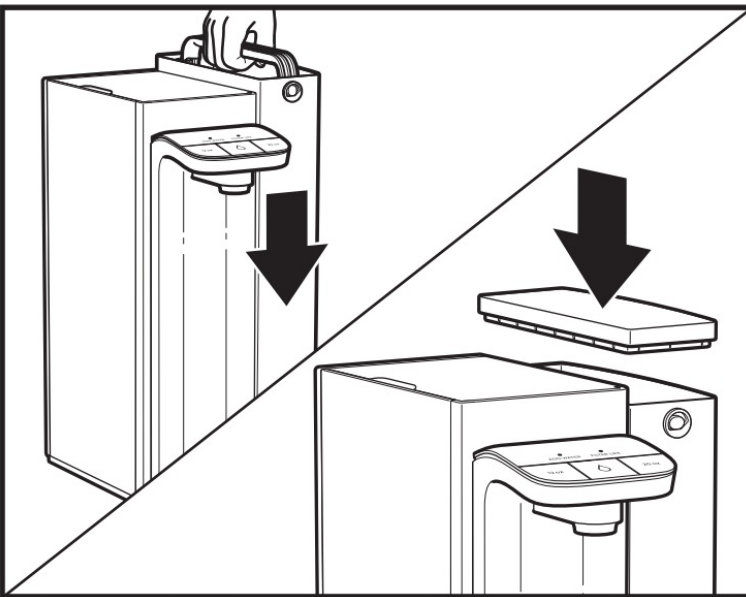
4. Reinstall panel on left side. Remove Lid on Water Reservoir



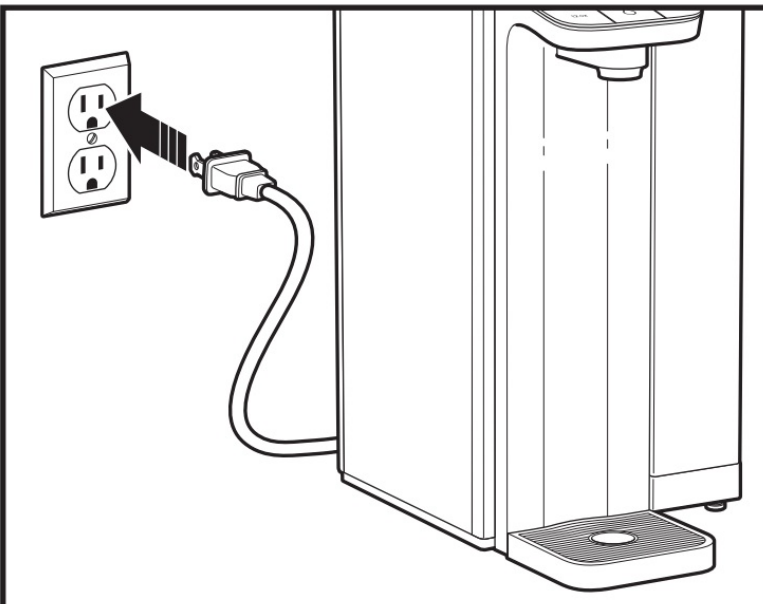
5. Use Water Reservoir Handle and lift straight up to remove. Add only cold water up to MAX Fill line.

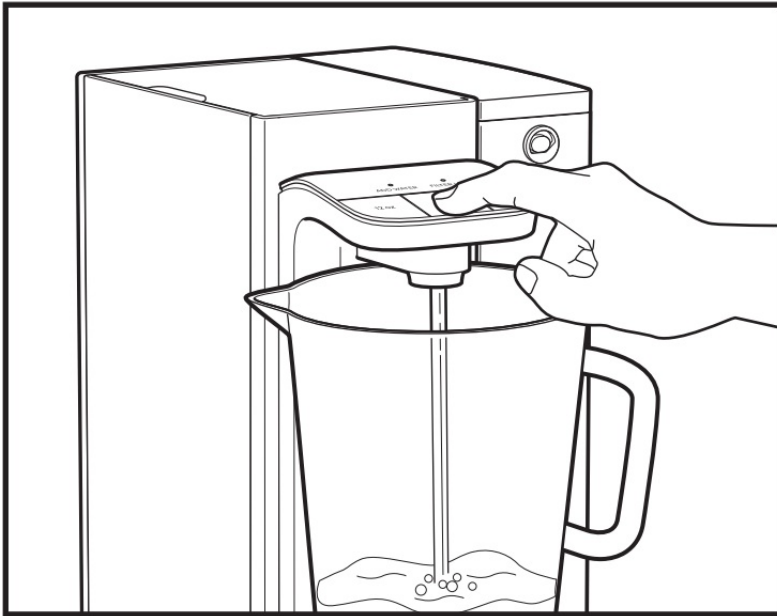


6. Align and lower Water Reservoir onto Water Reservoir Base. Place Lid on Water Reservoir



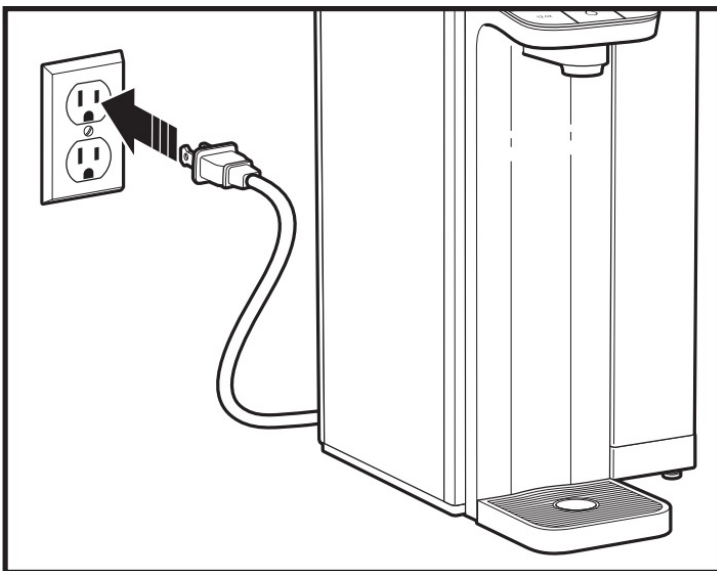
7. Plug into outlet. Press and hold () Manual Dispense Button until Reservoir is almost empty. Dispose of water, or use to water plants. Refill Reservoir to MAX Fill line and repeat process. New Filter must be flushed with an entire Water Reservoir of water twice before it is ready to use.



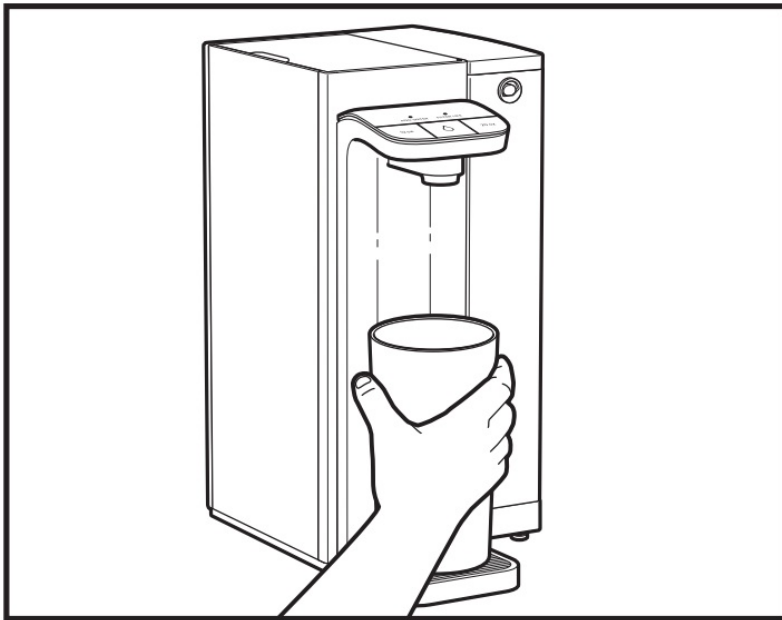


How to Dispense Filtered Water

1. Plug into outlet



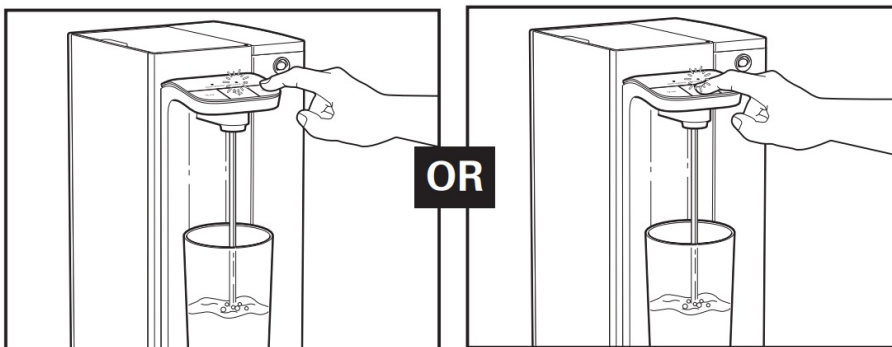
2. Place your glass or bottle on Drip Tray



3. Press and release 12 oz or 20 oz Button to dispense water, depending on your glass or bottle size. After selected amount of water is dispensed, unit will automatically shut off. FILTER LIFE Light will illuminate, letting you know filter status. Do not remove cup until FILTER LIFE Light and pump turn off.

NOTE: To cancel a 12 oz or 20 oz cycle, press any button while water is dispensing. Pump and FILTER LIFE Light will turn off. All dispensed amounts will reset.

4. Press and hold () Manual Dispense Button to activate pump to dispense desired amount of water. FILTER LIFE Light will illuminate, letting you know filter status. When Button is released, FILTER LIFE Light will turn off and water flow will stop.



How to Reset FILTER LIFE Light

Replacing Filter before end of life (green or yellow light on during use):

If you need to replace the Filter before the indicator is flashing red, the indicator will need to be manually reset. After installing the new Filter, press and hold both 12 oz and 20 oz Buttons for 3 seconds. This will reset the indicator, and the FILTER LIFE Light will turn green.

If you're replacing your filter at or past its useful life (red light is on or flashing):

Remove used Filter and replace with new Filter. When new filter is installed, the indicator will automatically reset and the FILTER LIFE Light will turn green. It's that easy.

NOTE: Remember to flush new Water Filter according to directions on page 8.

If water flows too slowly but the indicator is still flashing green or yellow, you may have poor water quality (e.g. sediment, sand, rust, etc.) that requires more frequent filter replacement to maintain the desired flow rate.

Care and Cleaning

1. Remove Water Reservoir, Water Reservoir Lid, and Drip Tray, wash in hot, soapy water. Rinse and dry.

NOTE: Do not wash any removable parts in dishwasher.



WARNING

Electrical Shock Hazard. Disconnect power before cleaning. Do not immerse power cord, plug, or base in water or other liquid.

2. Wipe outside with a damp cloth and dry

Troubleshooting

Water flow paused or unit made a brief noise during initial Filter flush.

- Neither is a concern and should only happen during setup as air is initially purged from the Filter. If the water flow pauses, simply release Button, then press again to resume the water flow.

Blue ADD WATER and red FILTER LIFE Lights are flashing.

- Water Filter is missing. Lights will flash until Filter is installed correctly. Once Water Filter is inserted, lights stop flashing.
- Water Filter is incorrectly installed. Remove Water Filter and reinstall until you hear 2 clicks to ensure Filter is fully inserted.

Filter is difficult to insert.

- Make sure that the Filter is inserted with Brita logo facing you.
- Place hand on top of Brita Hub™ during filter insertion to provide additional support.

Cup is overflowing.

- Use a glass that is larger than the amount you are dispensing

Blue ADD WATER Light is flashing.

- Water Reservoir needs water. Fill Water Reservoir to MAX Fill line and add back to Water Reservoir Base. Blue ADD WATER Light will turn off after 12 oz, () Manual Dispense, or 20 oz Button has been pressed and water is detected in Water Reservoir.

Unit doesn't dispense.

- Replace Water Filter and reset Filter Life. Used Water Filter may need to be replaced due to clogging from particulates. Do not reset Filter Life without replacing Filter.

Water flow has slowed before end of Water Filter life .

OR

FILTER LIFE Light is blinking red before 6 months.

- You may need to change your Filter more or less often than 6 months/120 gallons depending on amount and quality of water you consume. For water with high levels of sediment, sand and/or rust, Brita Hub™ Water Filter may need to be changed more frequently to maintain desired flow rate

Limited Warranty

This warranty applies to products purchased and used in the U.S. and Canada. This is the only express warranty for this product and is in lieu of any other warranty or condition.

This product is warranted to be free from defects in material and workmanship for a period of two (2) years from


the date of original purchase. During this period, your exclusive remedy is replacement of this product, or any component found to be defective, at our option. We will be responsible for the costs associated with returning a product or component under this warranty using a shipping method of our choice. If the product or component is unavailable, we will replace with a similar one of equal or greater value.

This warranty does not cover wear from normal use, use not in conformity with the printed directions, or damage to the product resulting from accident, alteration, abuse, or misuse. This warranty extends only to the original consumer purchaser or gift recipient. Keep the original sales receipt, as proof of purchase is required to make a warranty claim. This warranty is void if the product is used for other than single-family household use or subjected to any voltage and waveform other than as specified on the rating label (e.g., 120 V ~ 60 Hz).

We exclude all claims for special, incidental, and consequential damages caused by breach of express or implied warranty. All liability is limited to the amount of the purchase price. Every implied warranty, including any statutory warranty or condition of merchantability or fitness for a particular purpose, is disclaimed except to the extent prohibited by law, in which case such warranty or condition is limited to the duration of this written warranty. This warranty gives you specific legal rights. You may have other legal rights that vary depending on where you live. Some states or provinces do not allow limitations on implied warranties or special, incidental, or consequential damages, so the foregoing limitations may not apply to you.

To make warranty claim on Brita Hub™ do not return this appliance to the store. Please contact Brita LP at 800 863-3975, or visit brita.com/support

Documents / Resources

	<p>BRITA 87340 Hub Instant Powerful Countertop Water Filter System [pdf] Instruction Manual</p> <p>87340 Hub Instant Powerful Countertop Water Filter System, 87340, Hub Instant Powerful Countertop Water Filter System, Powerful Countertop Water Filter System, Countertop Water Filter System, Water Filter System, Filter System, System</p>
---	--

References

- [Brita.com](#)
- [brita.com/](#)
- [brita.com/performance-data](#)
- [brita.com/recycling](#)
- [brita.com/support](#)
- [Brita.com/thehub](#)
- [User Manual](#)