



Contents [[hide](#)]


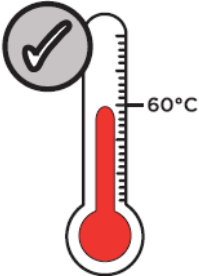
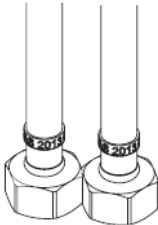

- [1 BRISTAN ELE BAS C Elevar Basin Mixer With Click Waste](#)
- [2 Specifications](#)
- [3 Pack Contents](#)
- [4 Operation](#)
- [5 Tools Required](#)
- [6 Prior to Installation](#)
- [7 Installation Instructions](#)
- [8 Waste Installation and Operation](#)
- [9 General Cleaning](#)
- [10 Maintenance](#)
- [11 Troubleshooting](#)
- [12 Guarantee](#)
- [13 Contact Us](#)
- [14 Documents / Resources](#)
 - [14.1 References](#)
- [15 Related Posts](#)

BRISTAN

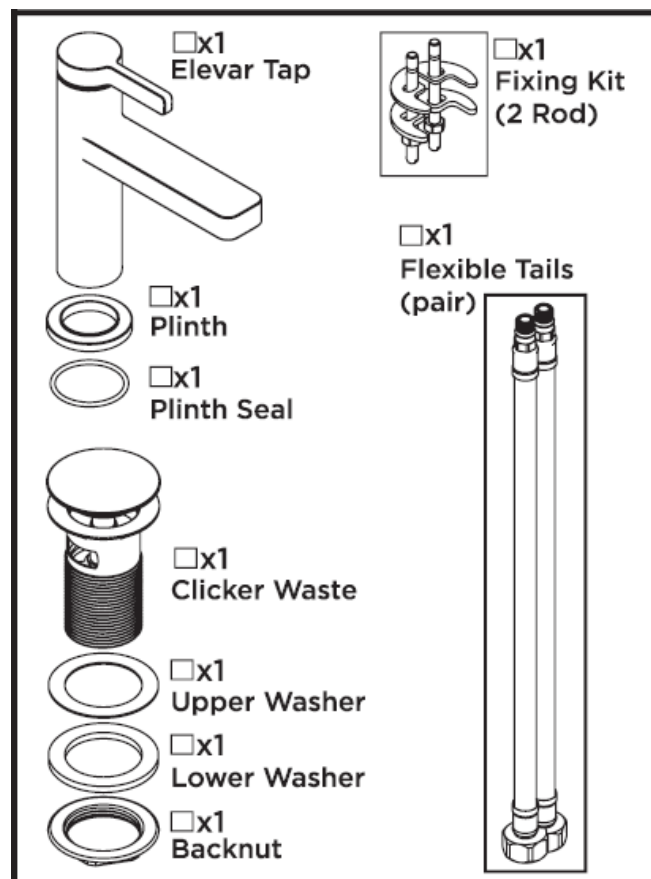
BRISTAN ELE BAS C Elevar Basin Mixer With Click Waste



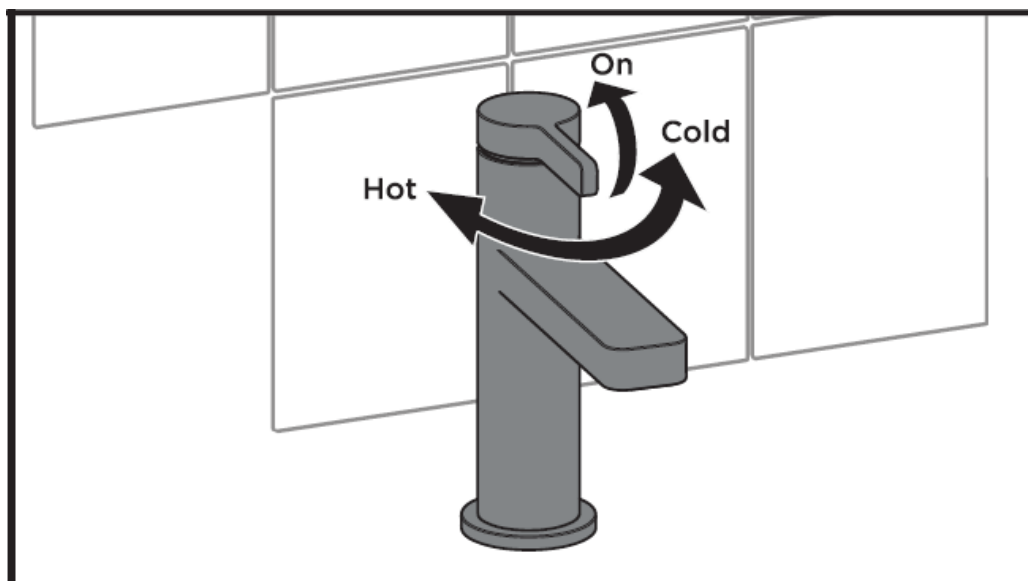
Specifications

Dynamic Water Pressure	Inlet Water Temperature	Inlet Connections	Outlet
<p>Min: 0.5 bar Max: 5.0 bar</p>  <p>Maximum Static Pressure: 10.0 bar</p>	 <p>Maximum Hot 60°C</p>	 <p>1/2" BSP Flexible Tails</p>	 <p>5lpm M24 Coin-Slot Aerator</p>

Pack Contents

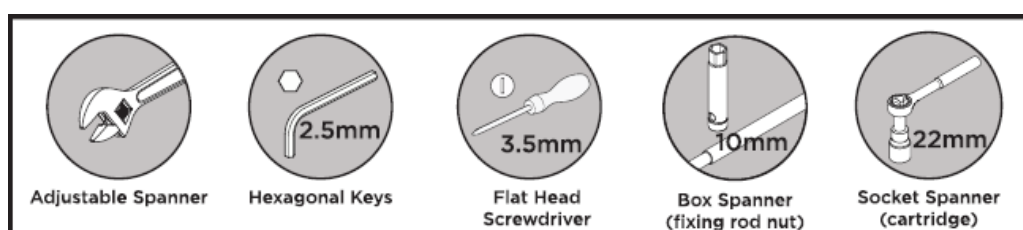


Operation



Tools Required

Tools Required for Installation/ Maintenance



Prior to Installation

- All products manufactured and supplied by Bristan are safe to use provided that they are installed, operated and receive regular maintenance in accordance with these instructions.
- This product needs to be installed in accordance with, and meet the requirements of The Water Supply (Water Fittings) Regulations (Northern Ireland) 2009 and The Water Supply (Water Fittings) (Scotland) Byelaws 2014.
- For full Installation Requirements & Notes (IRN) please visit www.wrasapprovals.co.uk/approvals-directory. Isolation valves must be fitted to the inlet water supplies to ensure ease of future maintenance.
- Before installing this product the water supply must be thoroughly flushed in order to remove any swarf, solder etc.
- Full access must be made available for future maintenance/servicing purposes.
- This product must not be modified in any way as this will invalidate the guarantee.

Spare Parts

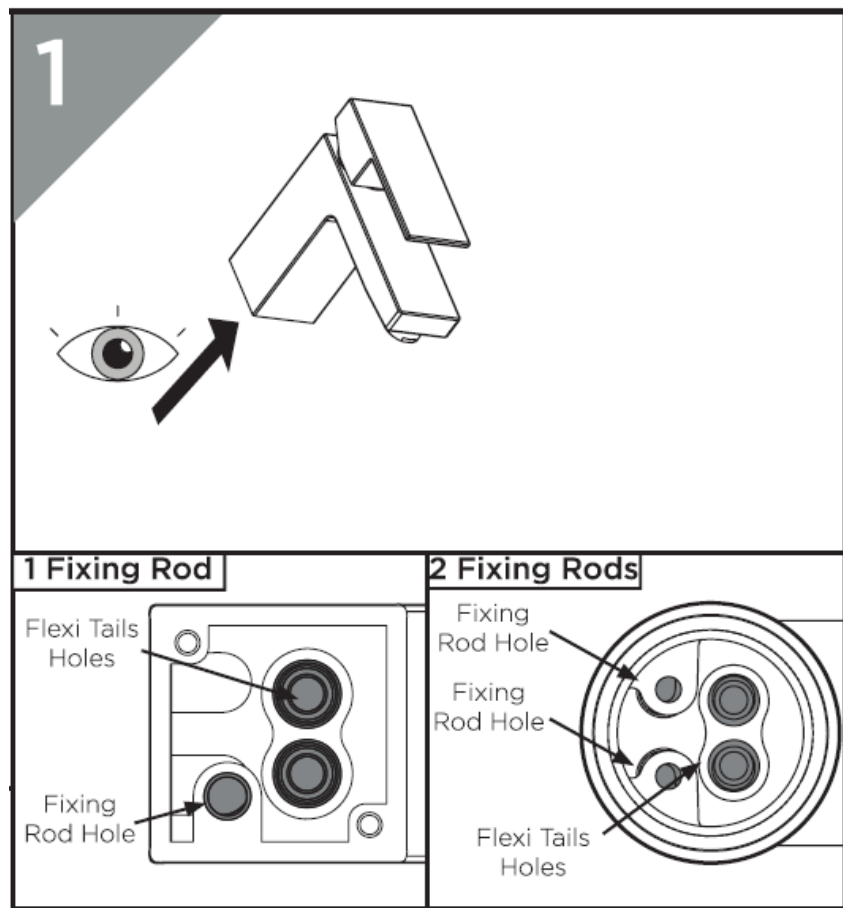
- To replace any spare parts for your tap, why not scan the QR Code or visit www.bristan.com and search for your product.

Important

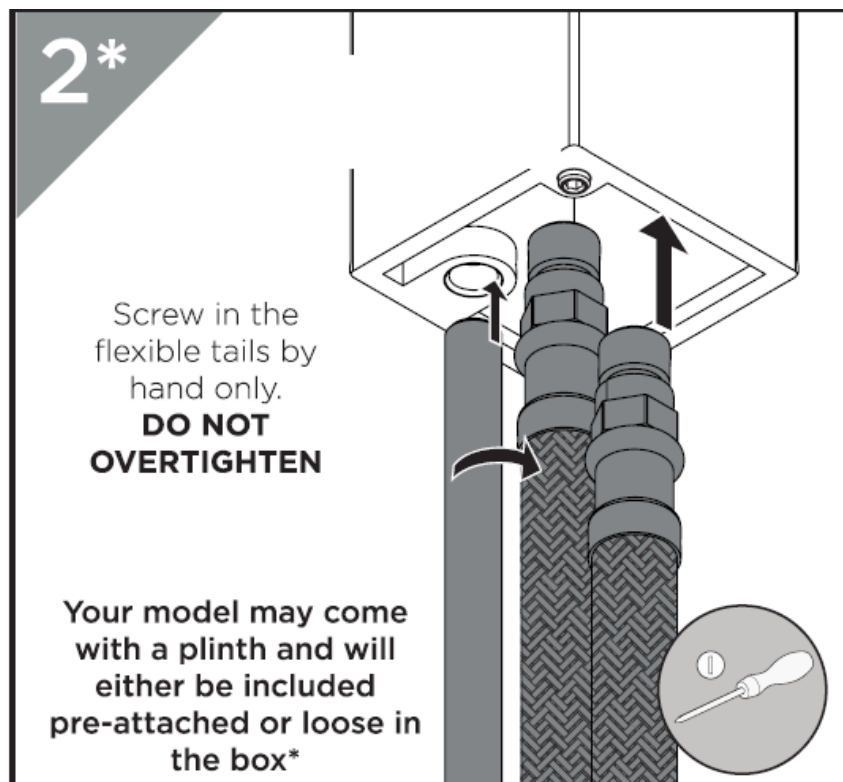
- The images shown are for illustrative purposes only.
- The product you have purchased may look different to those pictured in this booklet but will follow the same installation steps.
- Your contents page will be specific to your product.
- If you find your product or any of its components differ from those shown on the contents page, please contact our customer support.

Installation Instructions

- Look underneath the tap body to observe fixing kit rod(s) and tail inlet positions
- Depending on the model, the tap will utilise 1 or 2 fixing kit rods. Refer to your contents page

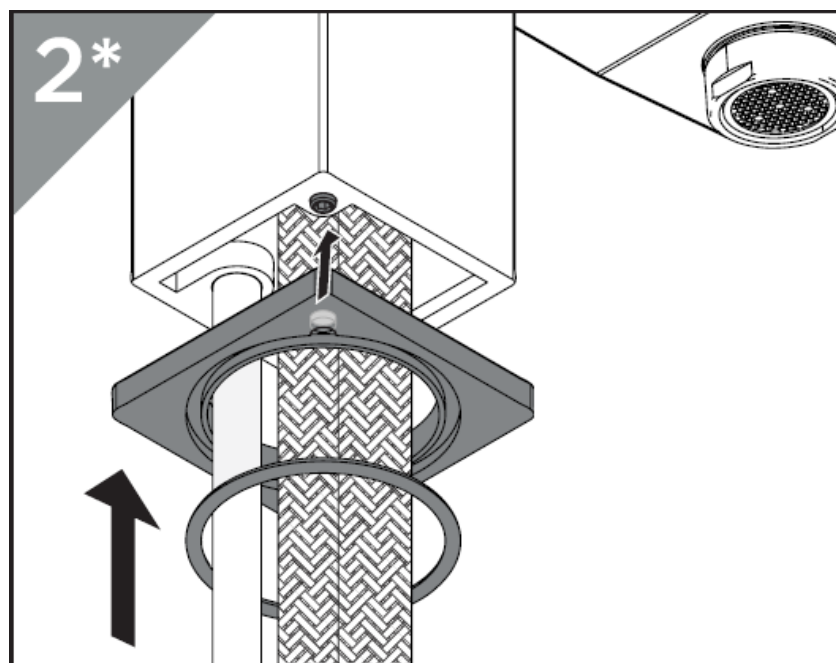


- Screw in the fixing kit rod(s) into the base of the tap with a screwdriver

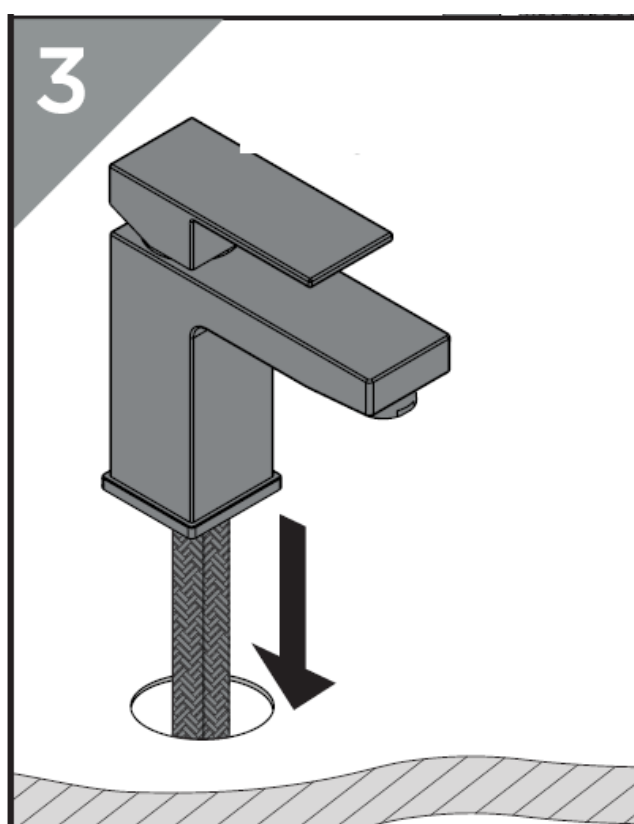


- If required, thread the flexible tails and fixing kit rods through the plinth and rubber seal (if loose) and align with tap body
- Take note of any grub screw holes on the underside of the tap and align them

correctly to the holes on the plinth

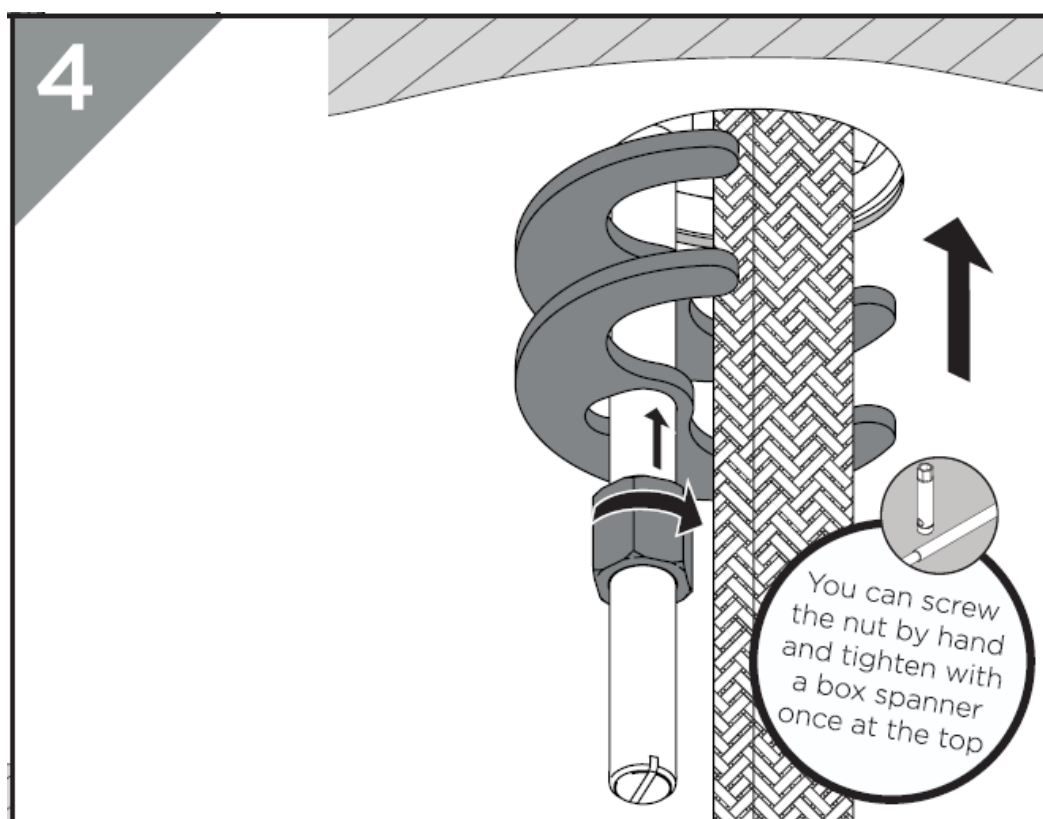


- Thread the flexible tails and fixing kit rods through the basin hole
- If the hole is not large enough for both tail ends to fit through, screw one of the tails in from underneath the basin.

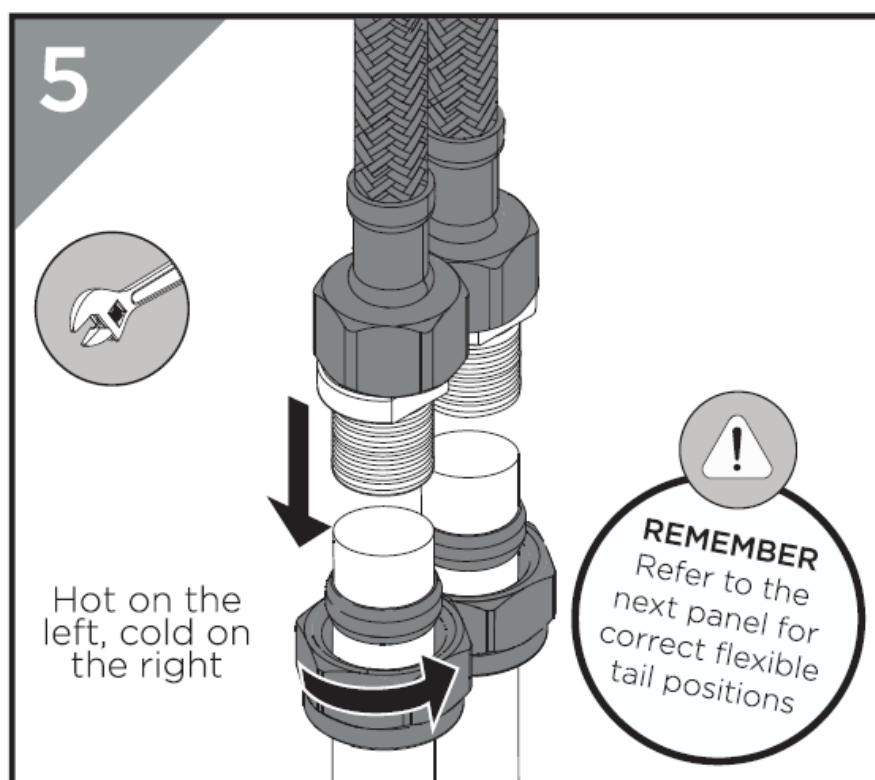


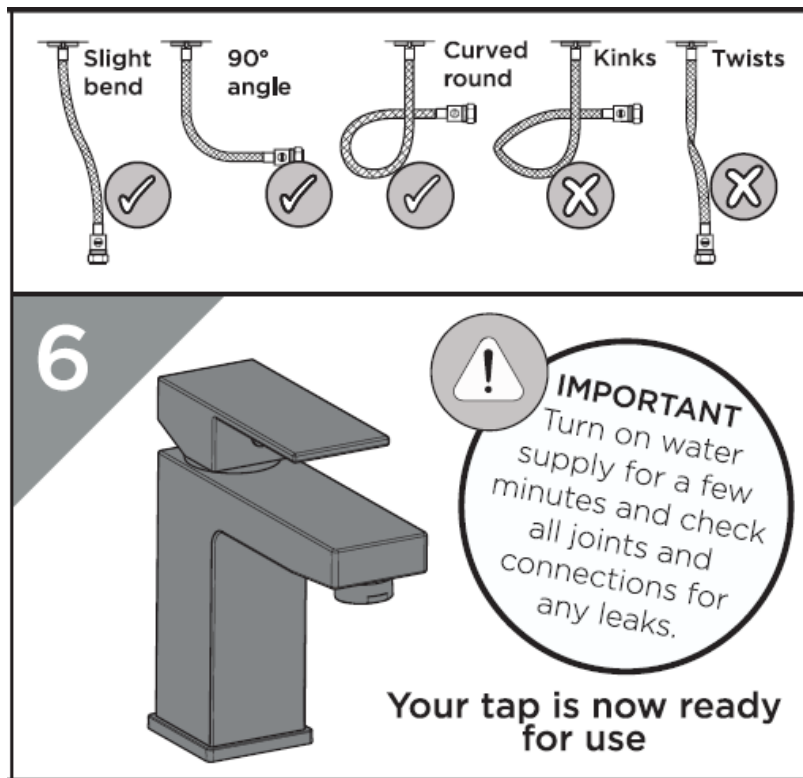
- From underneath the basin, slide the rubber gasket and metal c plate along the fixing rod(s) with the gasket sitting on top of the c plate
- Align the gasket and c plate, then begin tightening the nut up the rod towards the

basin until secure



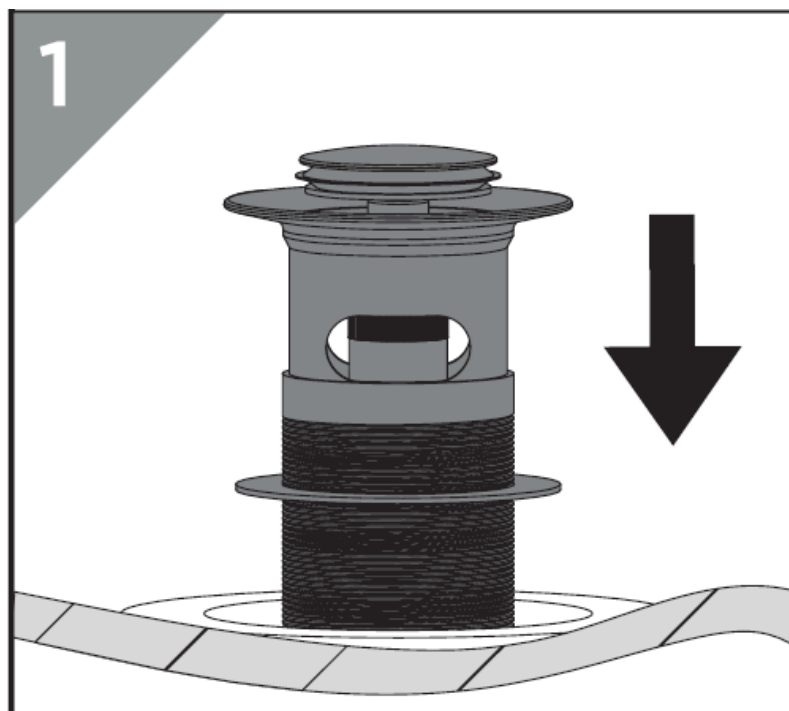
- Connect the hot and cold water supplies to the flexible tails and turn until tight





Waste Installation and Operation

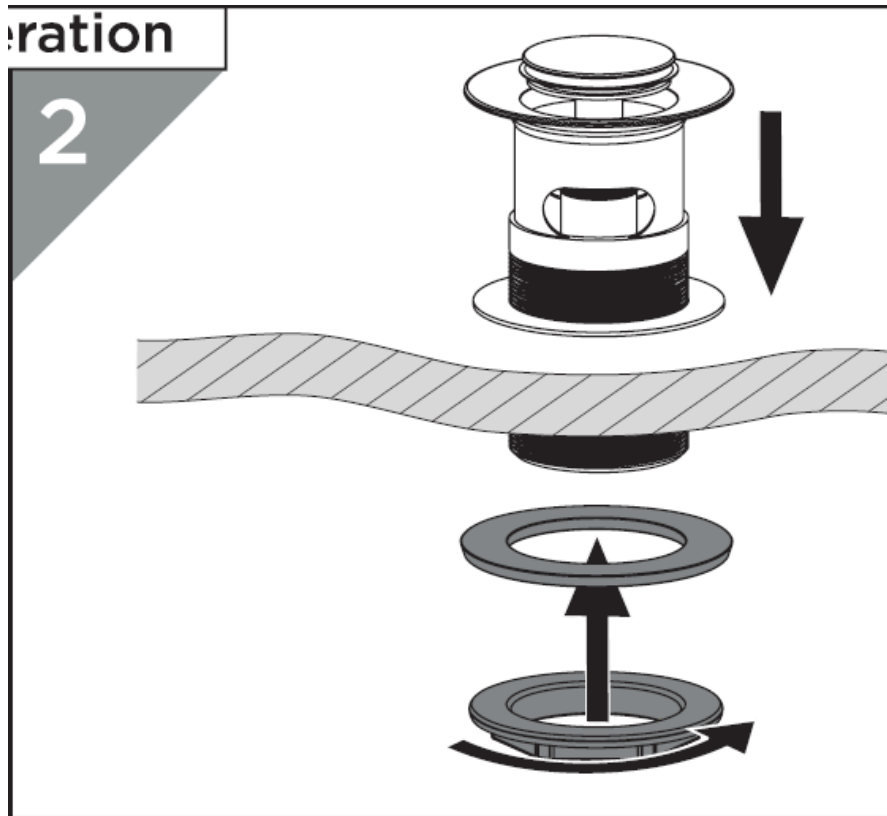
- Fit the waste above the basin, ensuring the washer is in place.



- Push waste into the hole until the outer rim sits flush with the bottom of the basin.
- Then, place the washer from underneath and tighten the backnut to secure the waste to the basin.

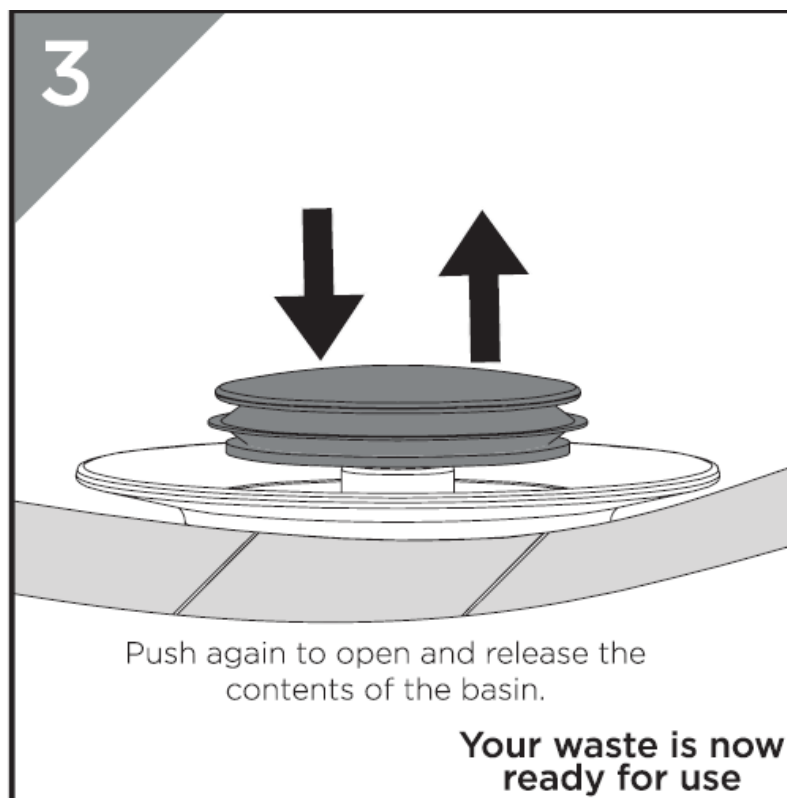
Operation

2



- Push the centre down to close the waste.

3



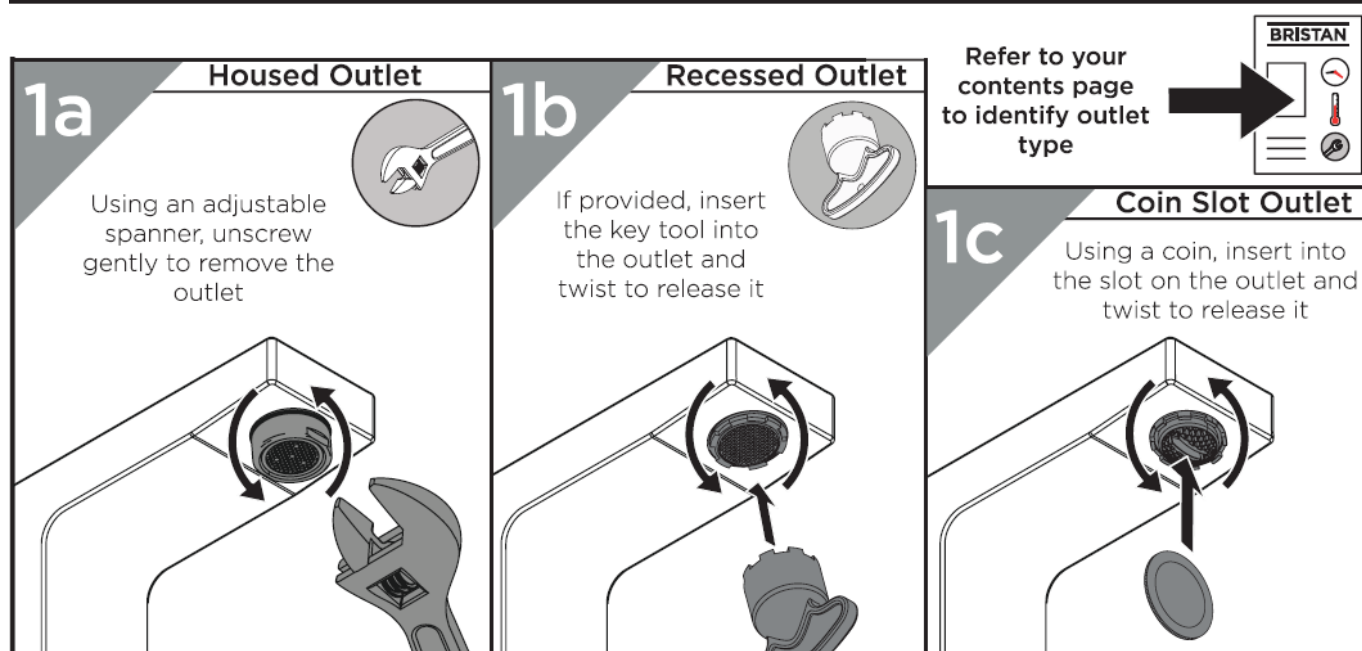
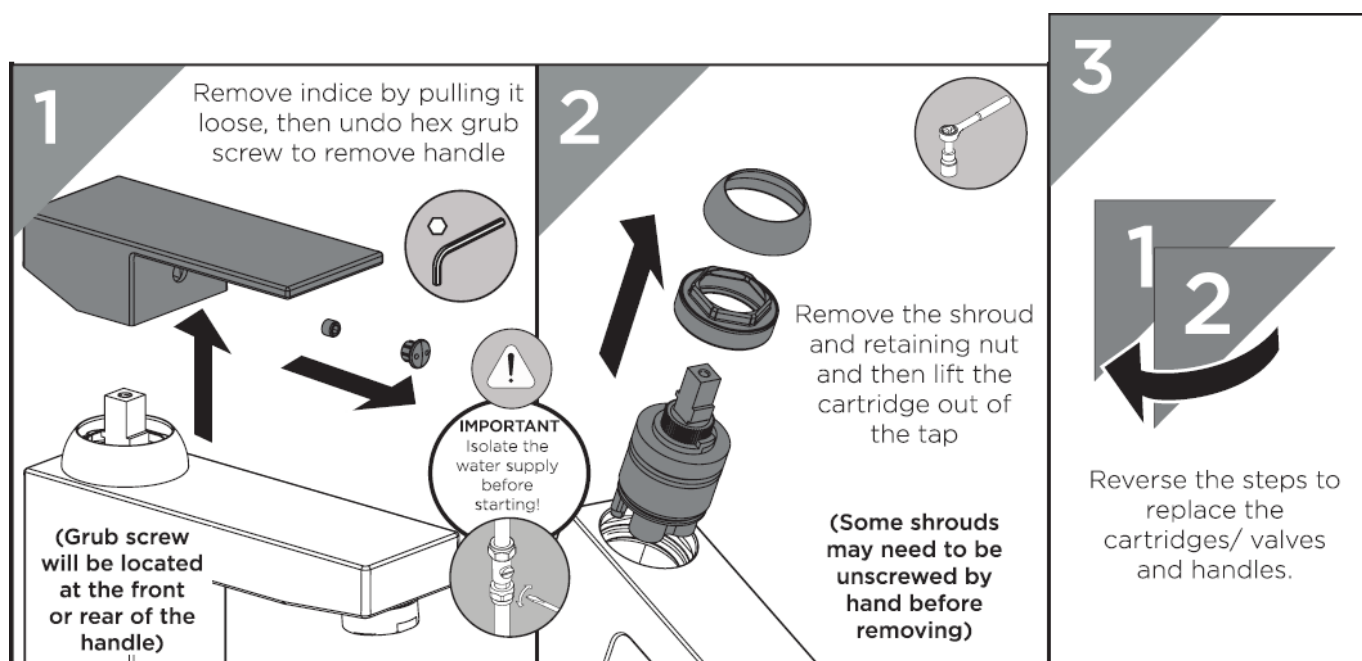
General Cleaning

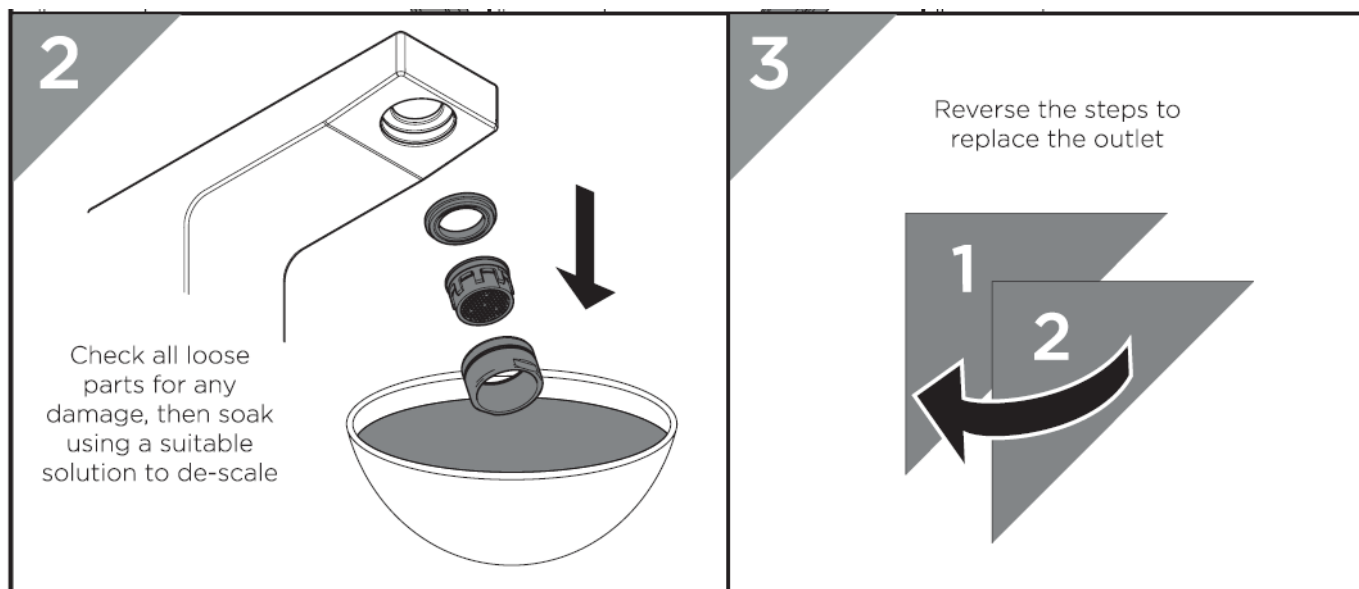
- Bristan products are made from premium materials, with hand-polished, electroplated, PVD or EPD finishes.

- Your taps or shower should be regularly cleaned with warm water, a mild pH-neutral liquid soap, and polished with a soft cloth. Any residues from soap, toothpaste, shampoos and shower gels can cause blemishes if not rinsed off straight after use.
- Household bleaches and cleaners contain harsh chemicals and may damage the surface finish. Avoid using abrasive cloths, scouring pads, scrub sponges, steel wool or anything similar.

Maintenance

Maintenance – Cartridge/ Valve Replacement





Troubleshooting

Symptom	Cause	Remedy
Low Flow	Partially closed isolation valve.	Open isolation valve.
	Airlock or partial blockage in the supply pipework.	Flush through pipework to ensure removal of debris and any airlocks.
	Partial blockage in the outlet	Remove to Clean and soak in suitable solution.
No hot water or cycling hot and cold	Instantaneous water heater cycles on and off as flow rate or pressure is too low.	Increase water flow rate or pressure through system.
No Flow	Closed isolation valve.	Open isolation valve.
	Mains water supply turned off.	Turn on mains water supply.
Temperatures not corresponding with taps	Inlet pipes have been connected incorrectly	Swap the inlet tails around.

Notes

- Please use this space for any notes you or your installer may have regarding the installation/plumbing of this product.

Guarantee

Our Guarantee

- At Bristan, we want to make things as easy as possible for our customers. That's why we offer solid guarantees on all our products, effective from the date of purchase, to give you peace of mind.
- Your guarantee starts from the purchase of your product, but you can still benefit from registering it for easier identification in the unlikely event of a manufacturing fault,

please visit www.bristan.com/register For any other queries, please call Customer Service on 0330 026 6273 where our expert team of advisors will be able to offer you any help and advice.

- For full guarantee terms and conditions, visit www.bristan.com/service-centre/guarantees



Contact Us

BRISTAN

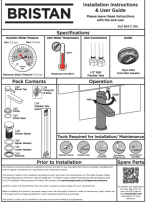
- Bristan Group Ltd.
- UK: Bristan Group, B78 1SG.
- EU: Masco Europe S.à.r.l.
- 14 Rue Strachen
- 6933 Mensdorf
- Luxembourg
- Customer Service: +44330 026 6273
- Web: Email: www.bristan.com
- enquire@bristan.com A Masco Company

Servicing Your Tap

- We recommend servicing your tap at least once every year to prolong its life.
- To see a video showing how to remove the cartridge for servicing, scan the QR code with your smartphone or tablet.
- Alternatively, visit www.youtube.com/BristanTV



Documents / Resources

	<p>BRISTAN ELE BAS C Elevar Basin Mixer With Click Waste [pdf] Installation Guide</p> <p>ELE BAS C, ELE BAS C Elevar Basin Mixer With Click Waste, Elevar Basin Mixer With Click Waste, Basin Mixer With Click Waste, Mixer With Click Waste</p>
---	--

References

- [User Manual](#)

Related Posts



[BRISTAN MI BAS BL Mono Basin Mixer with Click Waste](#)

[Instruction Manual](#)

BRISTAN MI BAS BL Mono Basin Mixer with Click Waste Specifications Dynamic Water Pressure Min: 0.5 bar Max:...



[BRISTAN COB BAS C Cobalt Basin Mixer Tap Instruction Manual](#)

BRISTAN COB BAS C Cobalt Basin Mixer Tap Specifications Dynamic Water Pressure Inlet Water

Temperature Inlet Connections Tools...

[Arisa Brushed Brass Click Clack Unslotted Basin Waste Instructions](#)

Arisa Brushed Brass Click Clack Unslotted Basin Waste Part This product consists of

Parts: Cover Cap...



[BRISTAN ELE BAS BLK Raise Basin Mixer User Guide](#)

BRISTAN ELE BAS BLK Raise Basin Mixer Specifications
Pack Contents Operation Tools Required Tools Required
for Installation/ Maintenance...

BRISTAN

Basin Mixer With Click Waste, BRISTAN, ELE BAS C, ELE BAS C Elevar Basin Mixer With Click Waste, Elevar Basin Mixer
With Click Waste, Mixer With Click Waste

—Previous Post

[BRISTAN ELE BAS BLK Raise Basin Mixer User Guide](#)

Leave a comment

Your email address will not be published. Required fields are marked *

Comment *

Name

Email

Website

☐ Save my name, email, and website in this browser for the next time I comment.

Post Comment

[Manuals+](#), [Privacy Policy](#) | [@manuals.plus](#) | [YouTube](#)

This website is an independent publication and is neither affiliated with nor endorsed by any of the trademark owners. The "Bluetooth®" word mark and logos are registered trademarks owned by Bluetooth SIG, Inc. The "Wi-Fi®" word mark and logos are registered trademarks owned by the Wi-Fi Alliance. Any use of these marks on this website does not imply any affiliation with or endorsement.