



BRISTAN CR SHXDIVFF C Carre Exposed Fixed Head Bar Shower User Guide

[Home](#) » [BRISTAN](#) » BRISTAN CR SHXDIVFF C Carre Exposed Fixed Head Bar Shower User Guide 

BRISTAN

Installation Instructions & User Guide

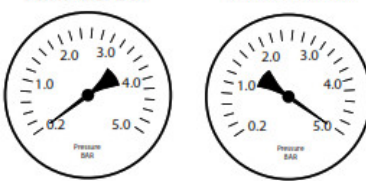
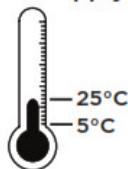



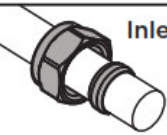
Please leave these instructions
with the end user

Product Code: CR SHXDIVFF C (D6)

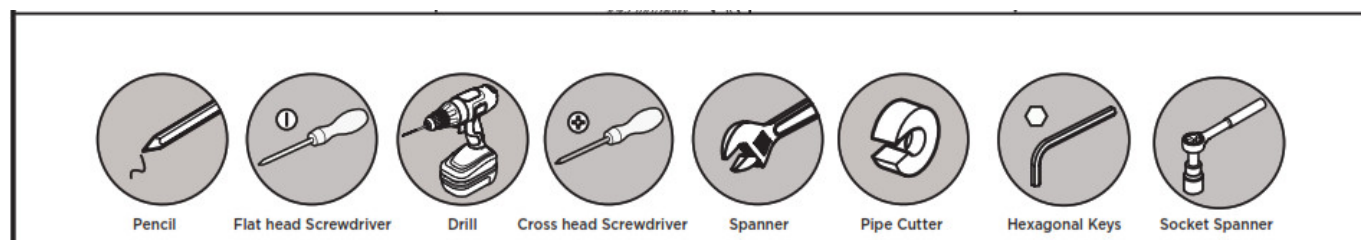
Contents

- [1 Specifications](#)
- [2 Tools You'll need](#)
- [3 Installation](#)
- [4 Operation](#)
- [5 Prior to Installation](#)
- [6 Temperature Setting](#)
- [7 Maintenance – Cartridge Cleaning](#)
- [8 Servicing Intervals](#)
- [9 Spare Parts](#)
- [10 Riser Installation](#)
- [11 Troubleshooting](#)
- [12 Documents / Resources](#)
- [13 Related Posts](#)

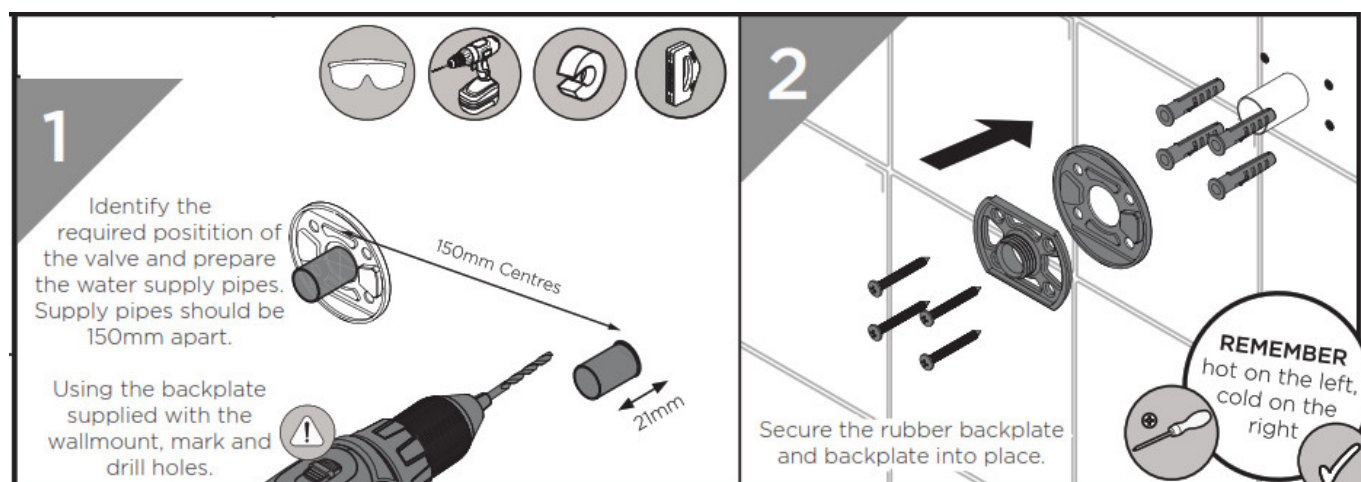
Specifications

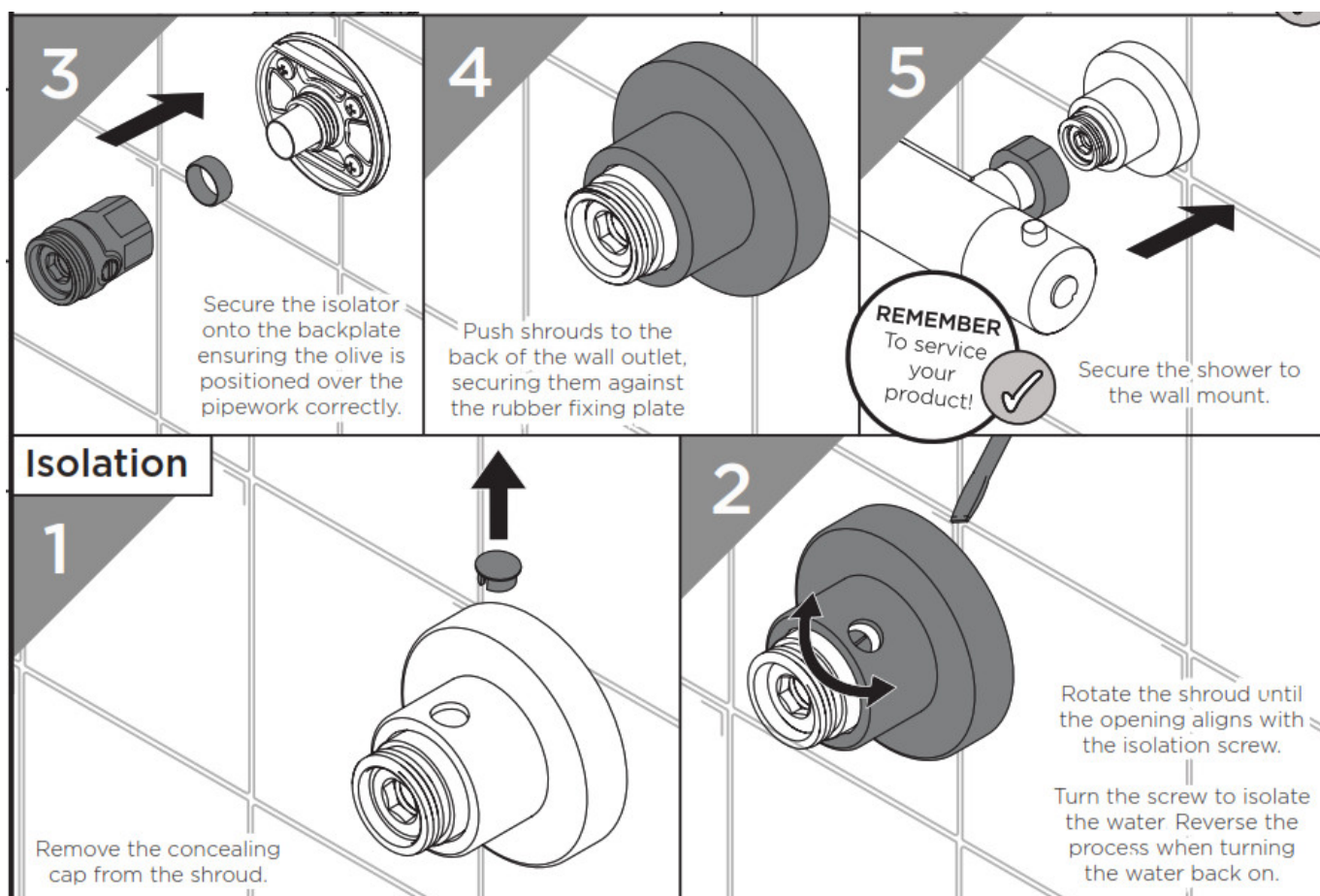
<p>Working Pressures</p> <p>Min: 0.2 bar Max: 5.0 bar</p>  <p>Maximum Static Pressure: 10.0 bar</p>	<p>Inlet Water Temperature</p> <p>Cold Water Supply</p>  <p>Min: 5°C Max: 25°C</p> <p>Hot Water Supply</p>  <p>60-65°C Recommended</p> <p>Factory pre-set 42°C</p>  <p>IMPORTANT</p> <p>The inlet hot water must be at least 10°C above the required blend temperature.</p>	<p>Inlet Dimensions</p>  <p>Inlet Connections</p>  <p>15mm Compression</p>
--	---	--

Tools You'll need

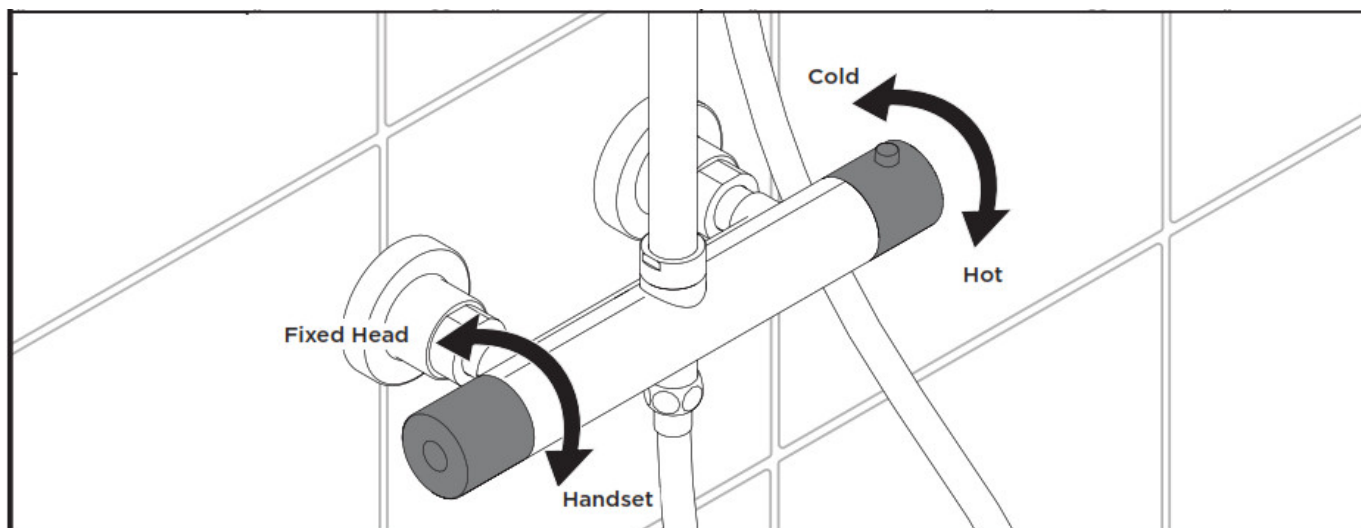


Installation





Operation



Prior to Installation

All products manufactured and supplied by Bristan are safe to use provided that they are installed, operated, and receive regular maintenance in accordance with these instructions.

This product needs to be installed in accordance with, and meet the requirements of the Water Supply (Water Fittings) Regulations 1999 and current by-laws. For full Installation Requirements & Notes (IRN) please visit wras.co.uk/directory.

Isolation valves must be fitted to the inlet water supplies to ensure ease of future maintenance.

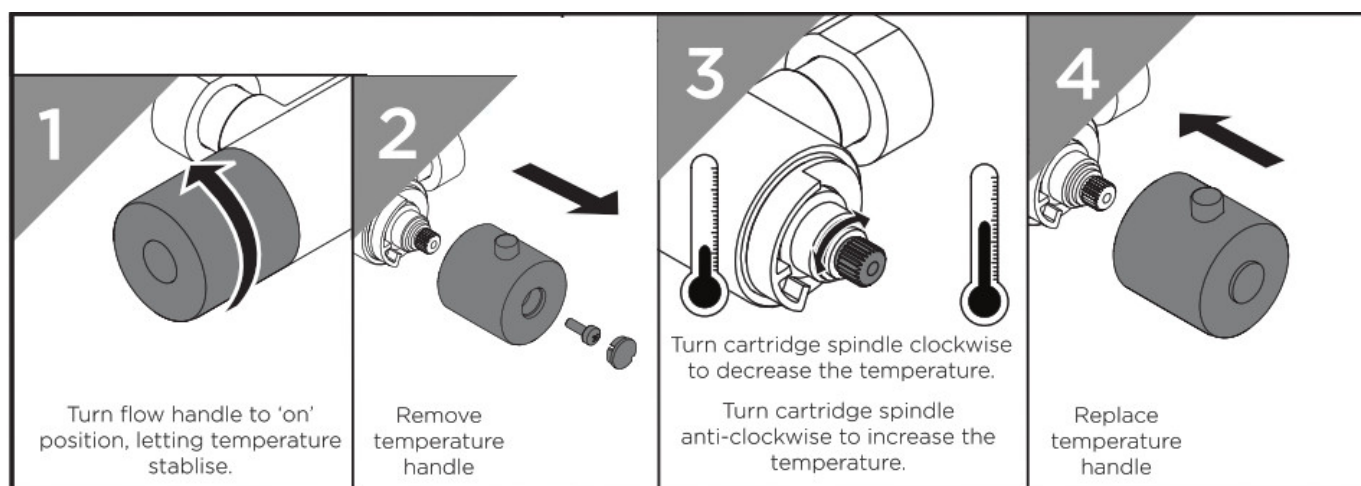
Before installing this product the water supply must be thoroughly flushed in order to remove any swarf, solder, etc.

This product must not be modified in any way as this will invalidate the guarantee.

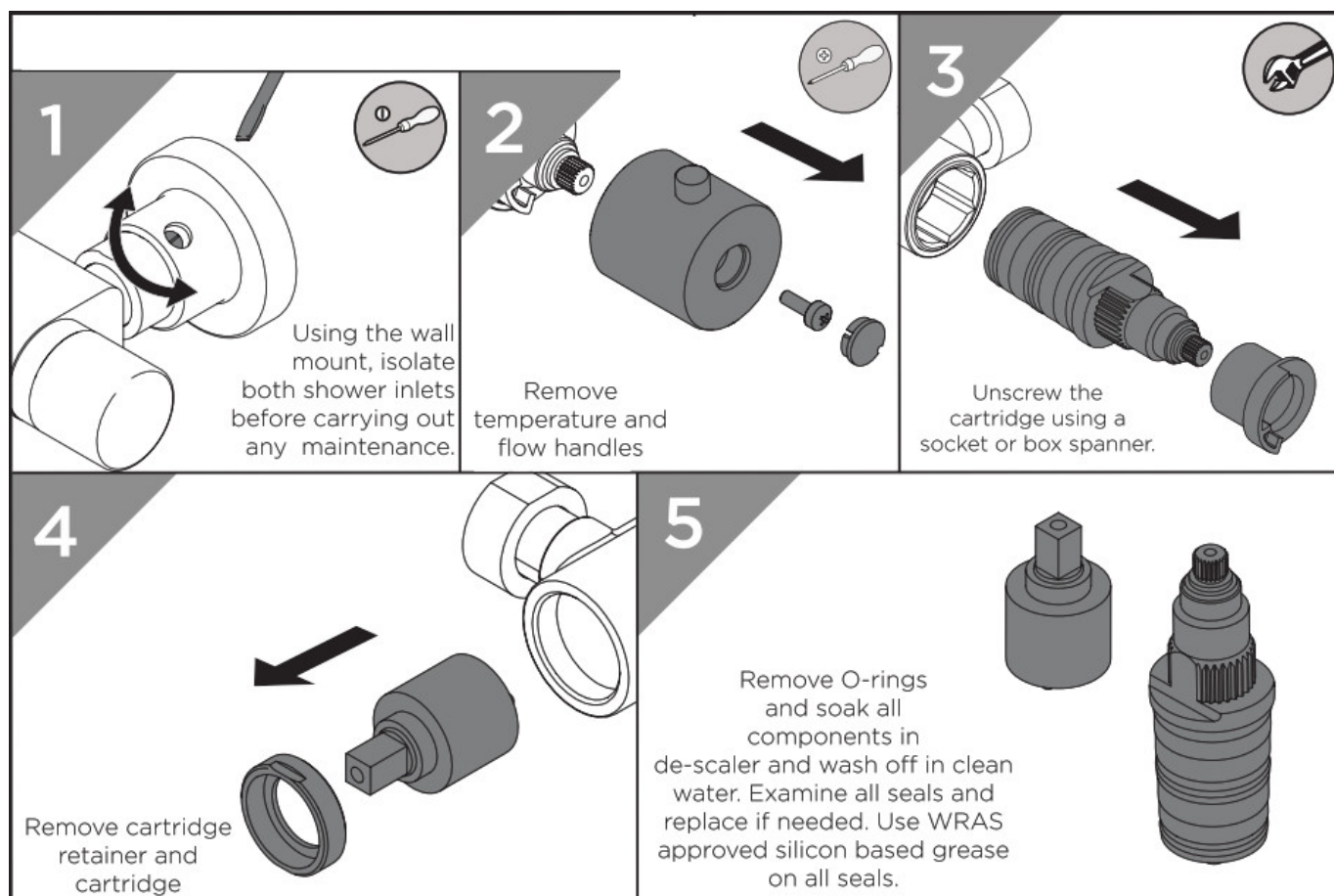
Full access must be made available for future maintenance/servicing purposes.

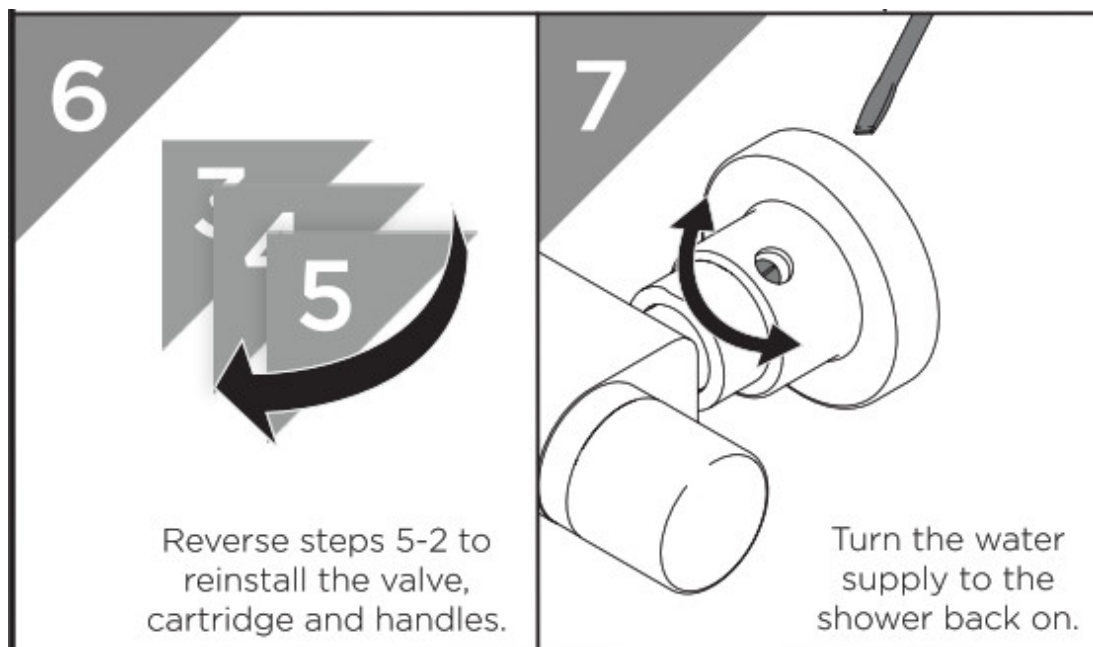
RM12 6NB, Tel: 01708 472791





Maintenance – Cartridge Cleaning





Servicing Intervals

To reduce the build-up of limescale and to ensure this shower works to its maximum performance we recommend this shower is serviced every 6-12 months depending on the hardness of your water.



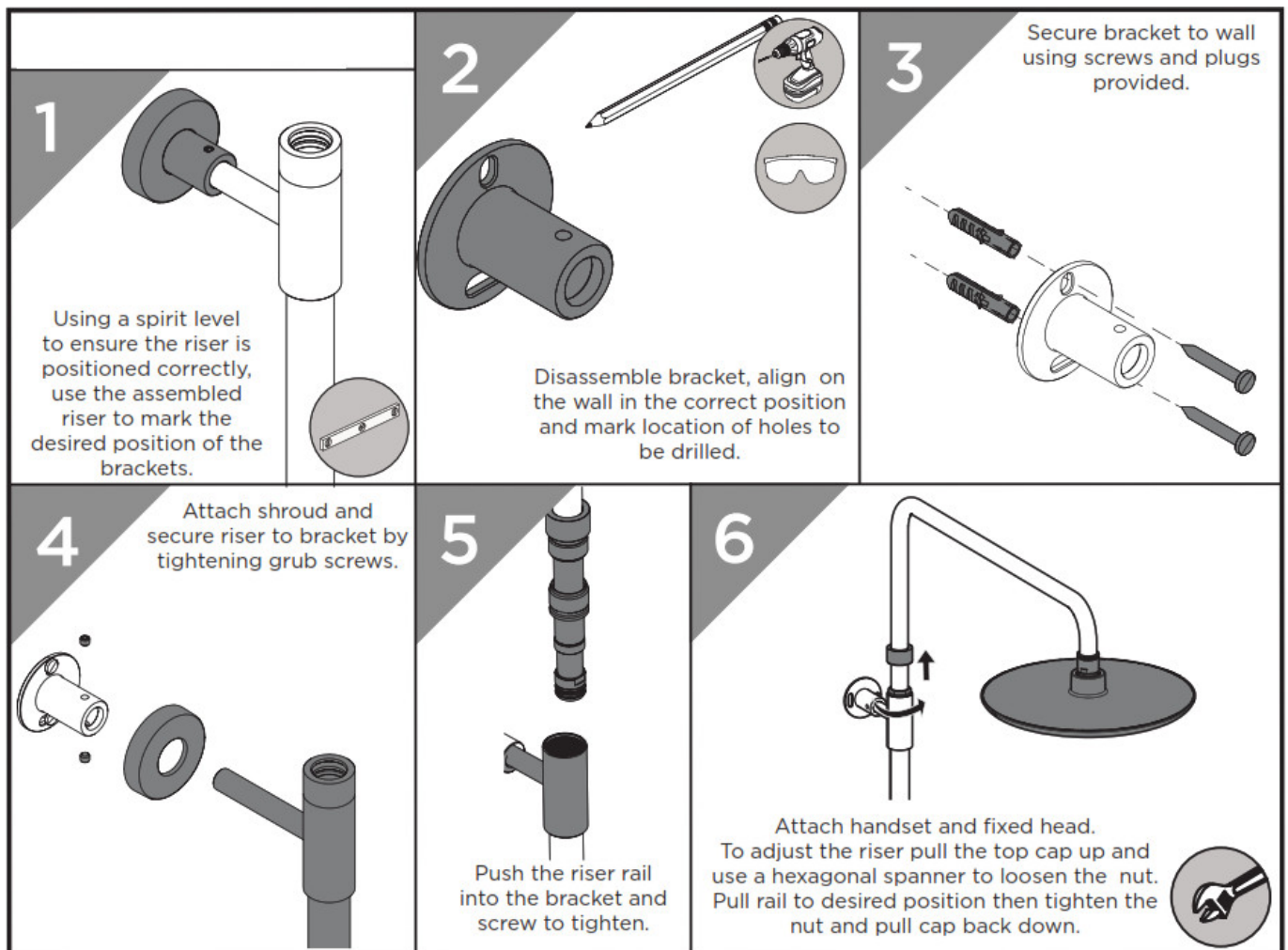
Spare Parts

To replace any spare parts for your shower why not scan the below QR Code and search for your product.



<http://www.bristan.com/products/Mixer-Showers?code=PM2%20CSHCVO%20C>

Riser Installation



Troubleshooting

Symptom	Cause	Remedy
No flow or low flow rate	partially closed isolation valve.	Open isolation valve.
	Instantaneous water heater cycles on and off as flow rate or pressure is too low.	Increase water flow rate or pressure through the system.
	Head of water is below the minimum distance required.	2 meters minimum required.
	Hot or cold water being drawn off elsewhere causes pressure changes or instantaneous boiler temperature changes.	Do not use other water outlets when using the taps.
	Airlock or partial blockage in the supply pipework.	Flush through pipework to ensure the removal of debris and any airlocks.
Water dripping from shower	This is normal for a short time after using the shower.	This is caused by residual water tension, the build-up of water in the shower.
	If water continues to drip, possibly due to the cartridge	Remove cartridge and clean, refer to 'Maintenance' section before starting any maintenance.
The shower does not turn on	Closed isolation valve.	Open isolation valve.
	The mains water supply turned off.	Turn on mains water supply.

At Bristan, we want to make things as easy as possible for our customers. That's why we offer solid guarantees on all our products, effective from the date of purchase, to give you peace of mind. To start your free guarantee simply scan the QR code and register your product. Alternatively, visit www.bristan.com/register.

For any other queries, please call our Customer Service on 0330 026 6273 where our expert team of advisors will be able to offer you any help and advice.

For full guarantee terms and conditions visit www.bristan.com/guarantees.



<http://www.bristan.com/register>

Documents / Resources

A small thumbnail image showing the cover of a technical manual. It features the BRISTAN logo at the top left and several diagrams illustrating the installation and components of the shower head.	<p>BRISTAN CR SHXDIVFF C Carre Exposed Fixed Head Bar Shower [pdf] User Guide CR SHXDIVFF C, Carre Exposed Fixed Head Bar Shower, CR SHXDIVFF C Carre Exposed Fixed Head Bar Shower</p>
---	---

[Manuals+](#).