



BRISTAN COB SHCVO C Cobalt Thermostatic Recessed Dual Control Valve Instruction Manual

[Home](#) » [BRISTAN](#) » BRISTAN COB SHCVO C Cobalt Thermostatic Recessed Dual Control Valve Instruction Manual 

BRISTAN

Installation Instructions & User Guide

Contents

- [1 COB SHCVO C Cobalt Thermostatic Recessed Dual Control Valve](#)
- [2 Specifications](#)
- [3 Prior to Installation](#)
- [4 Pack Contents](#)
- [5 Valve Configuration](#)
- [6 Installation](#)
- [7 Temperature Adjustment](#)
- [8 General Cleaning](#)
- [9 Operation](#)
- [10 Maintenance – Cartridge Cleaning](#)
- [11 Troubleshooting](#)
- [12 Documents / Resources](#)
 - [12.1 References](#)
- [13 Related Posts](#)

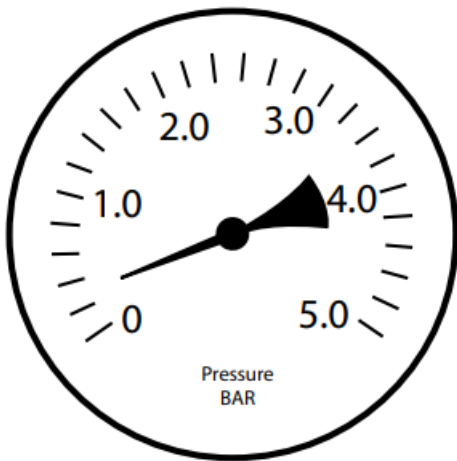
COB SHCVO C Cobalt Thermostatic Recessed Dual Control Valve

Please leave these instructions with the end user
Product Code: COB SHCVO C (D8)

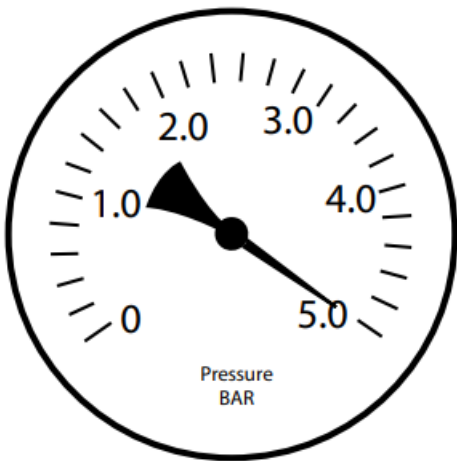
Specifications

Dynamic Water Pressure

Min: 0.2 bar

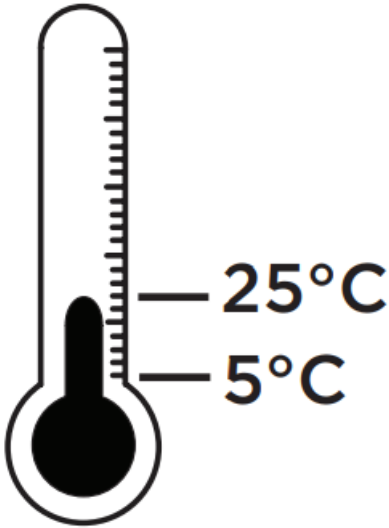
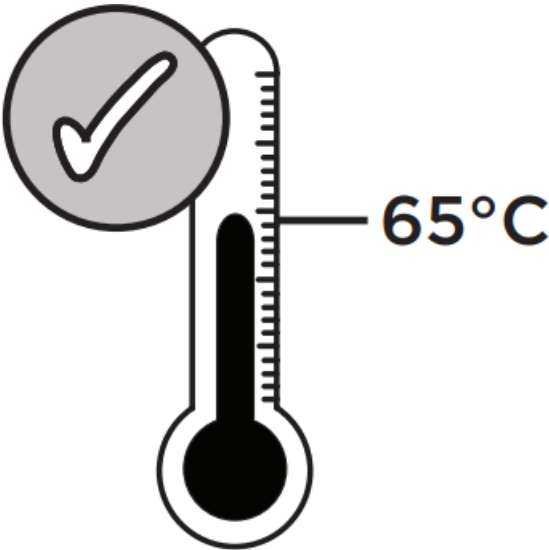


Max: 5.0 bar



Maximum Static Pressure: 10.0 bar

Inlet Water Temperature

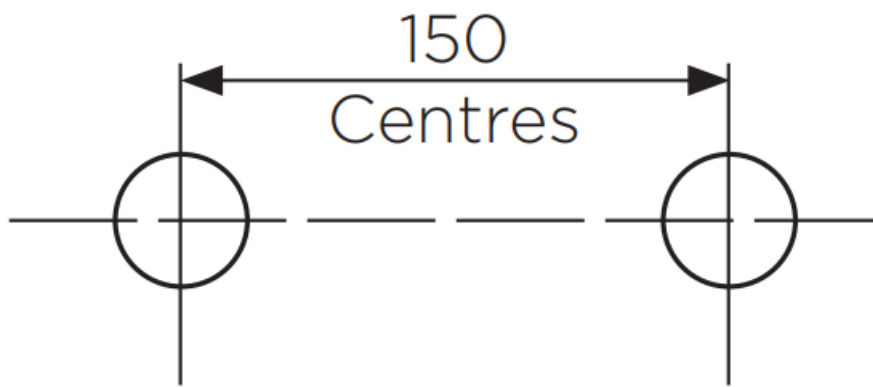
Cold Water Supply	Hot Water Supply
 <p>A vertical thermometer with a scale. The liquid level is between 5°C and 25°C. The text "25°C" and "5°C" are printed next to the scale.</p>	 <p>A vertical thermometer with a scale. The liquid level is at 65°C. A checkmark icon is shown next to the thermometer. The text "65°C" is printed next to the scale.</p>
Min: 5°C Max: 25°C	65°C Recommended



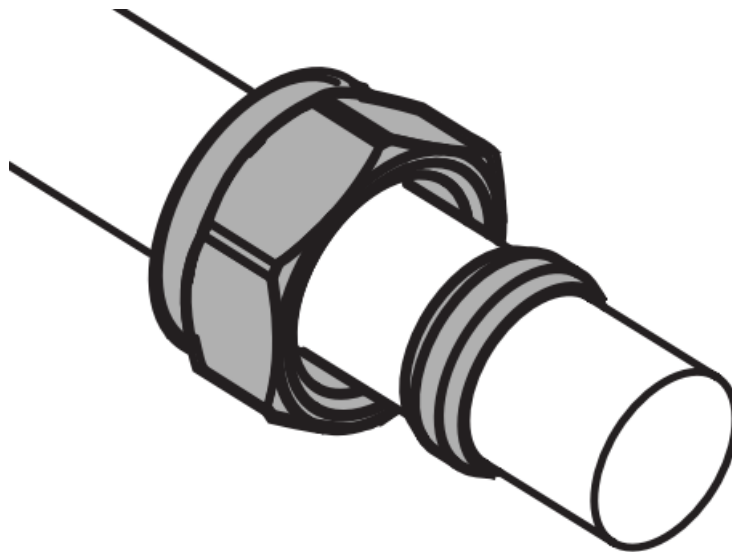
IMPORTANT

The inlet hot water must be at least 10°C above the required blend temperature.

Inlet Dimensions



**Inlet Connections 15mm
Compression**



Tools You'll Need



Socket Spanner



**Flat head
Screwdriver**



Drill



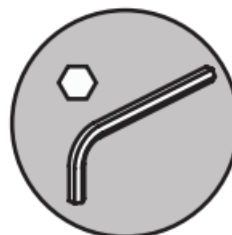
Adjustable Spanner



Pipe Cutter



Silicon Sealant



Hexagonal Keys



Pipe & Wire Detector

Prior to Installation

All products manufactured and supplied by Bristan are safe to use provided that they are installed, operated, and receive regular maintenance in accordance with these instructions.

This product needs to be installed in accordance with, and meet the requirements of the Water Supply (Water Fittings) Regulations 1999 and current by-laws. For full Installation Requirements & Notes (IRN) please visit wras.co.uk/directory.

Isolation valves must be fitted to the inlet water supplies to ensure ease of future maintenance. Before installing this product the water supply must be thoroughly flushed in order to remove any swarf, solder, etc.

Full access must be made available for future maintenance/servicing purposes.

Before drilling into walls, check that there are no hidden electrical wires, cables, or water supply pipes. This can be checked with the aid of an electronic detector.

If power tools are used do not forget to:

- Wear eye protection
- Unplug equipment after use

This product must not be modified in any way as this will invalidate the guarantee.

If in doubt, contact a registered plumber, your Local Water Authority, or the Secretary of the Institute of Plumbing, address as follows:-

The Institute of Plumbing,
64 Station Lane,
Hornchurch,
Essex,
RM12 6NB, Tel: 01708 472791

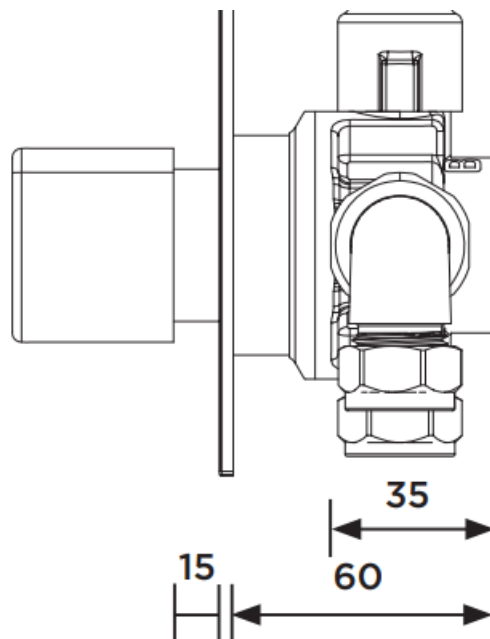
Cavity Dimensions (mm)

Minimum

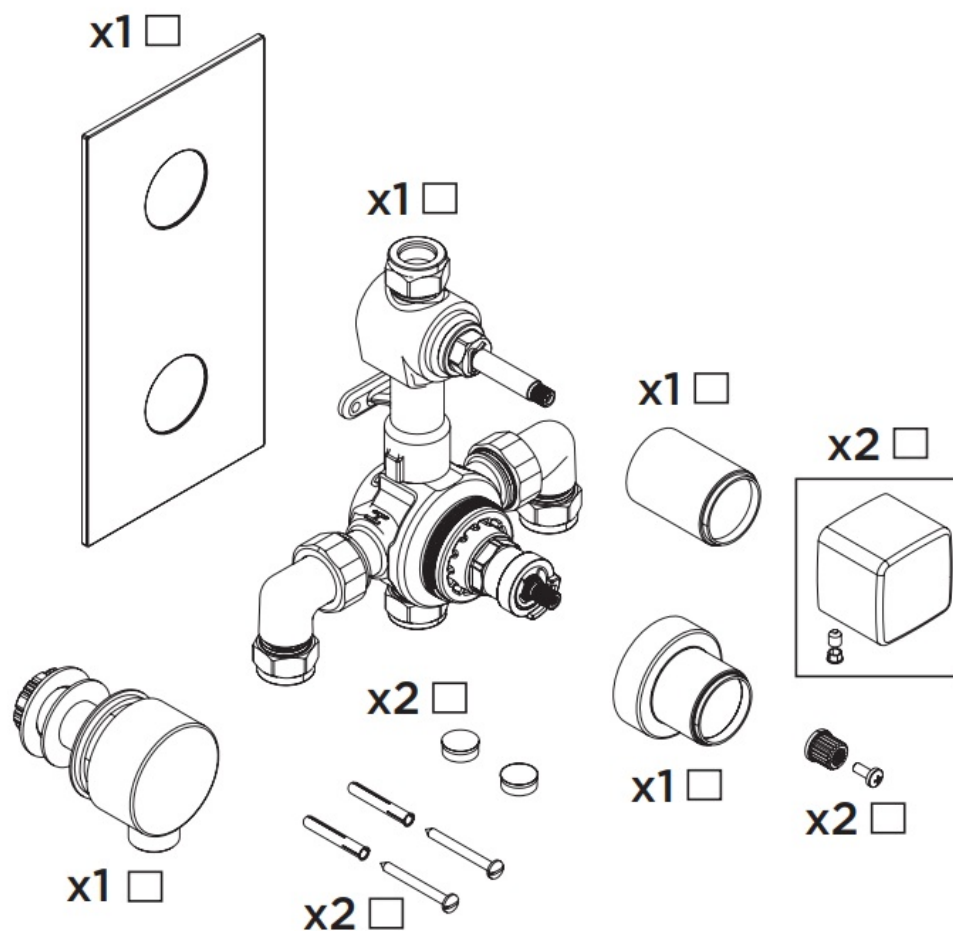
Cavity Depth: 35mm

Concealing Plate

Adjustment Range: 15mm



Pack Contents

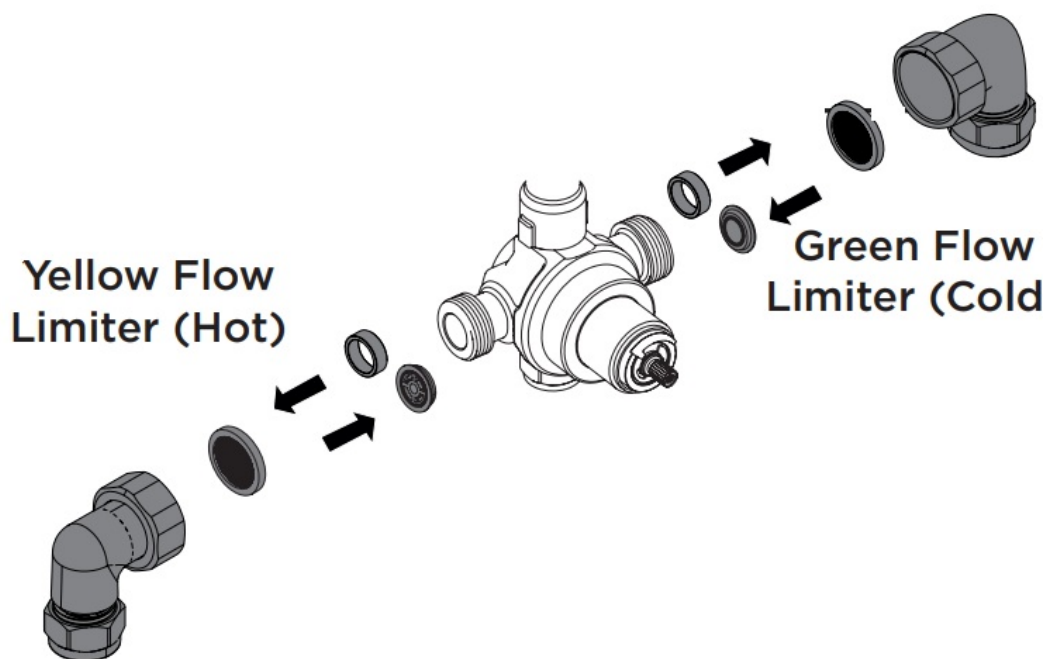


Valve Configuration

1. Remove the inlet elbows and filters.

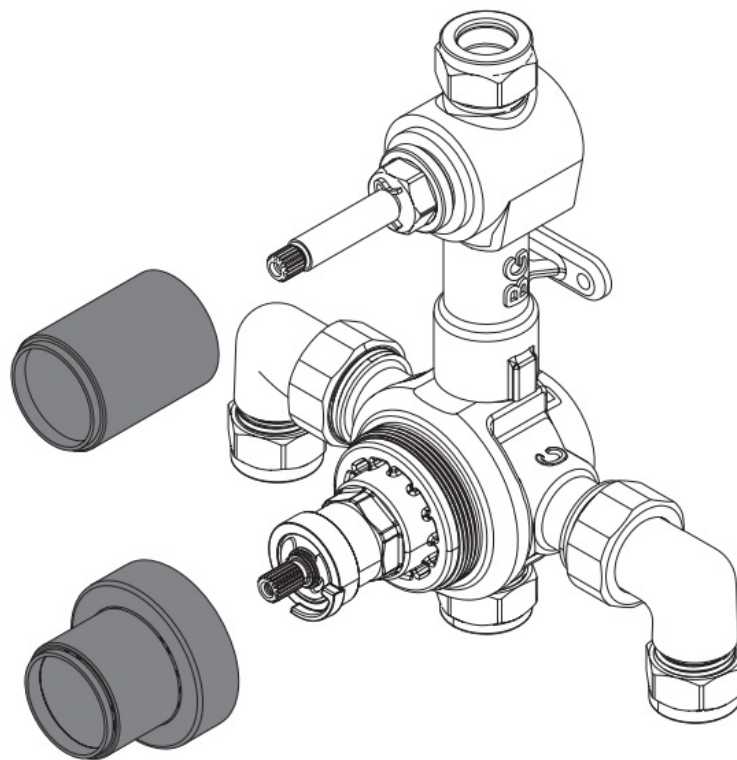
Remove the plastic inserts from the valve inlets and insert the flow regulators.

Replace the elbows, ensuring the filters are fitted.



IMPOR TANT If installed in conjunction with combination boiler flow regular tors must be fitted.

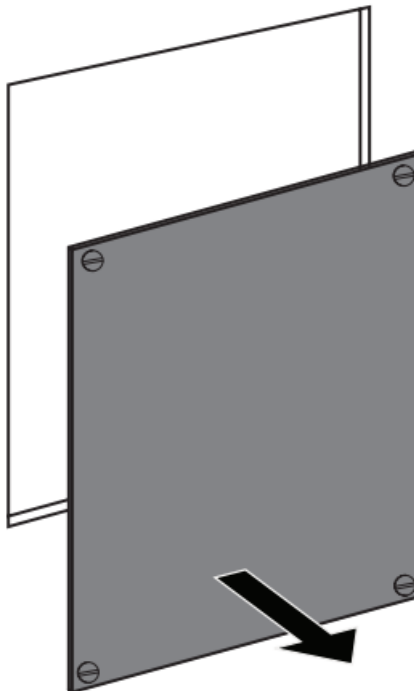
2. Screw the shrouds onto the valve.



Installation

1. Prepare the pipework.

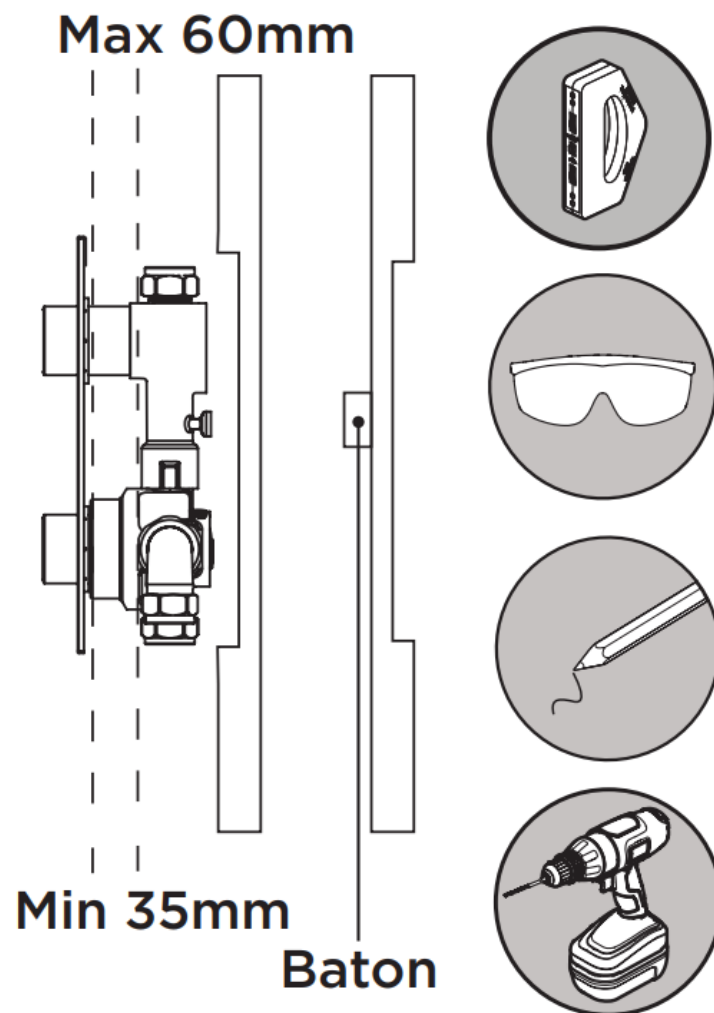
Create the rear access point in the back of the wall cavity.



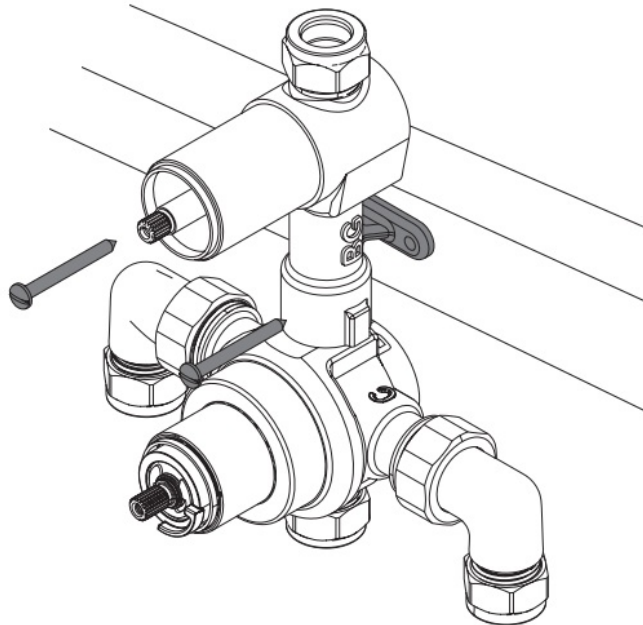
IMPORTANT Rear access to the shower is required for maintenance and servicing

2. Install suitable batons (if required) onto the rear cavity.

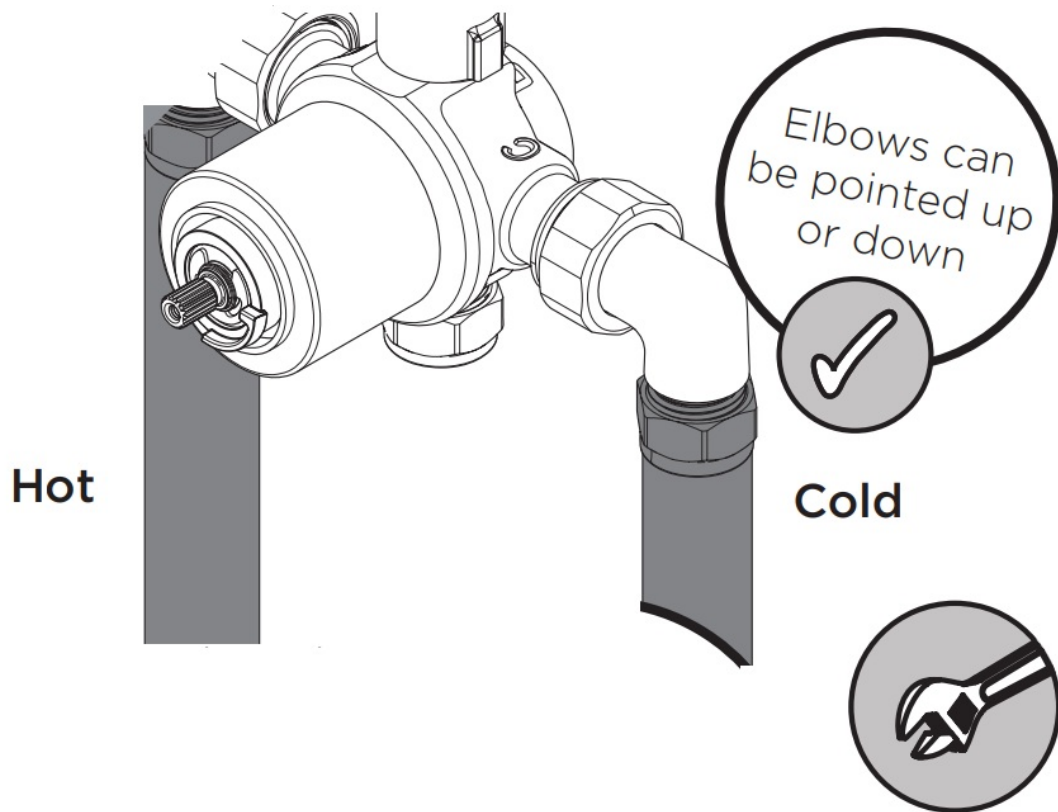
Mark the position of the valve and drill and plug holes to suit.



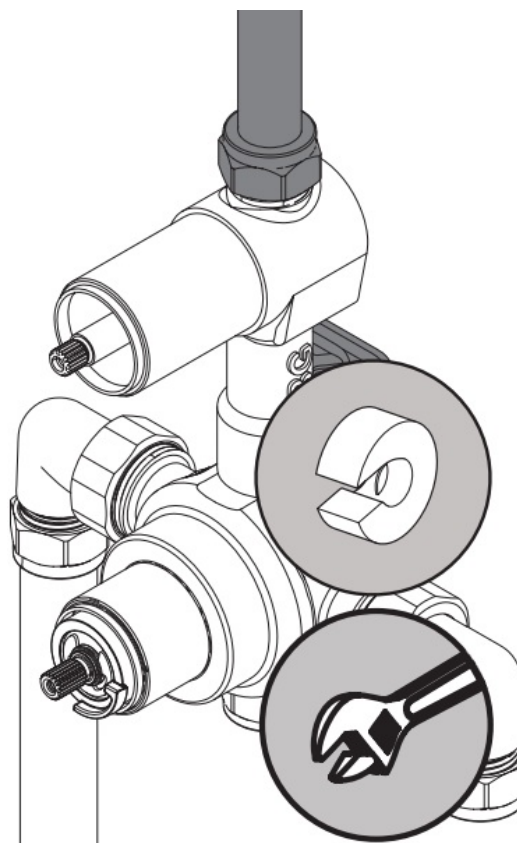
3. Secure the valve using the screws supplied (solid walls only) or a suitable alternative.



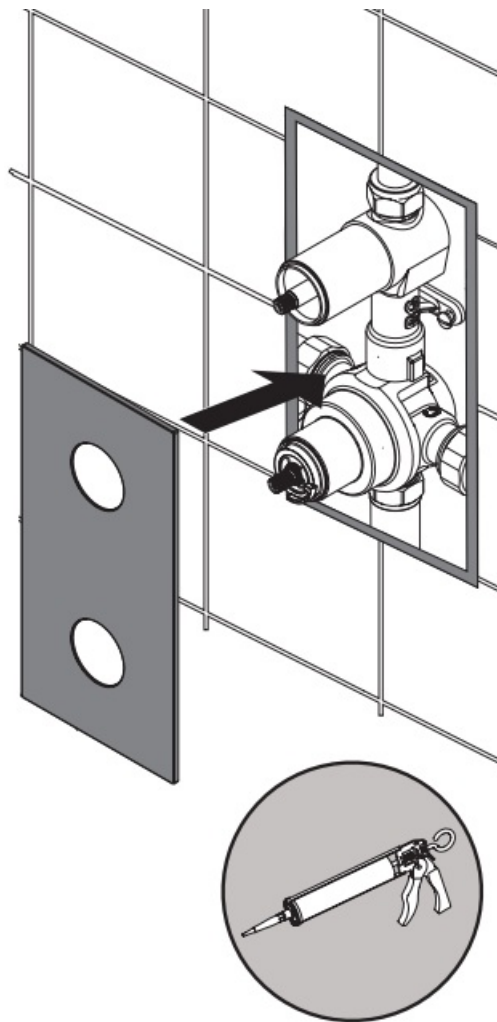
4. Connect the inlet pipes ensuring the olives are fitted.



5. Plumb the valve into your chosen outlet. Turn on the water supply and check the valve for any leaks.

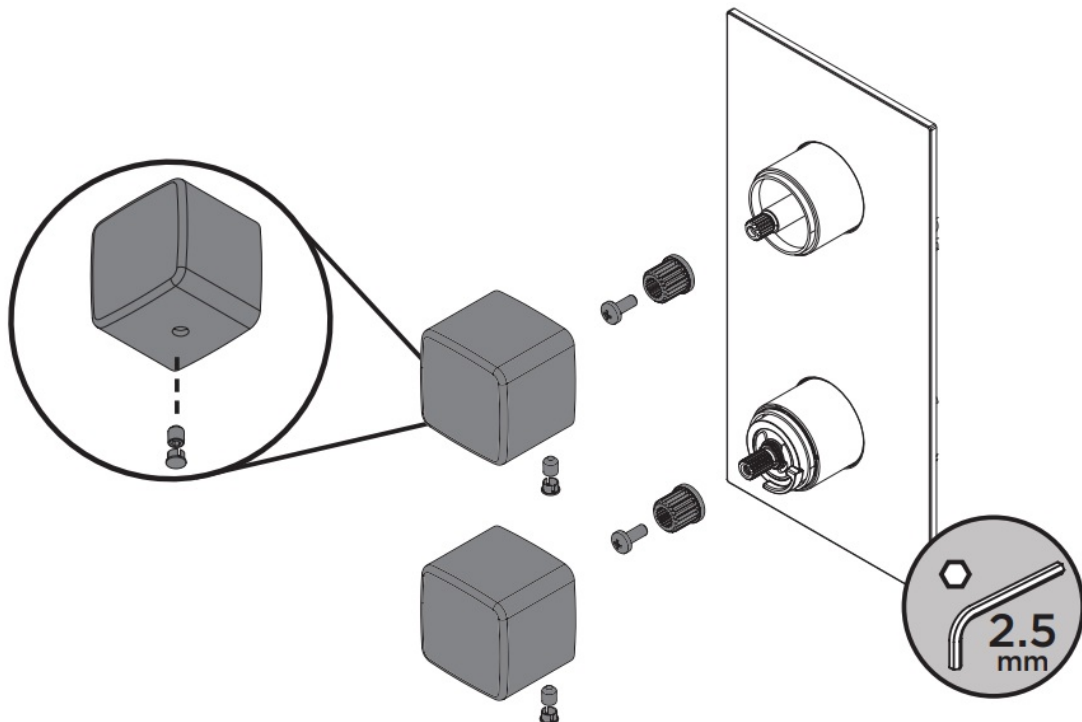


6. Draw around the concealing plate as a template, measuring by 10mm to give clearance. Finish the wall surface. Using a silicon sealant, push on the concealing plate and hold firmly until set.



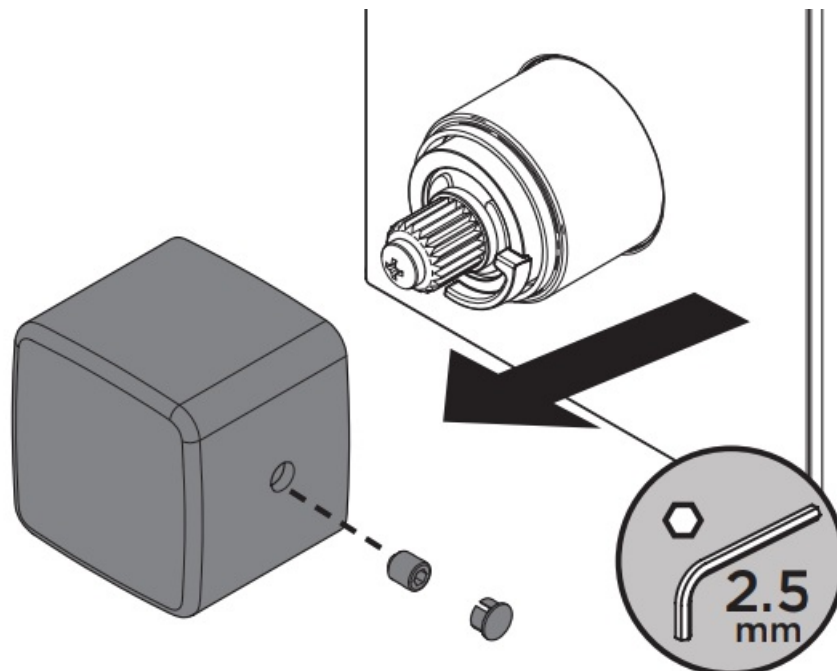
REMEMBER hot on the left, cold on the right

7. Fit the handles.



Temperature Adjustment

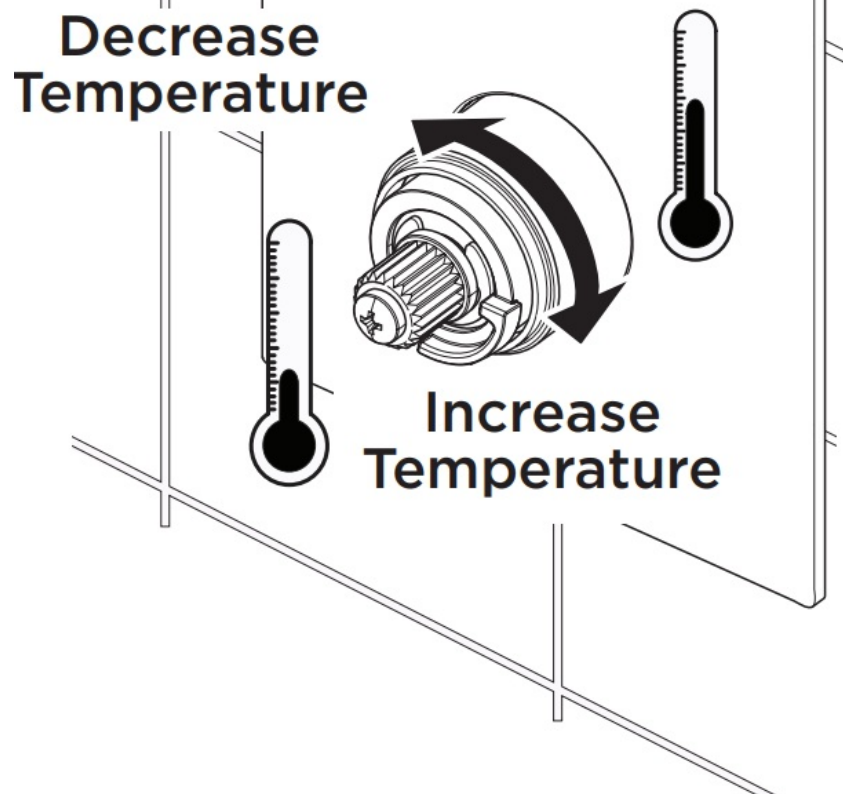
1. Turn the handle to the maximum temperature setting, then remove it.



REMEMBER To service your product!

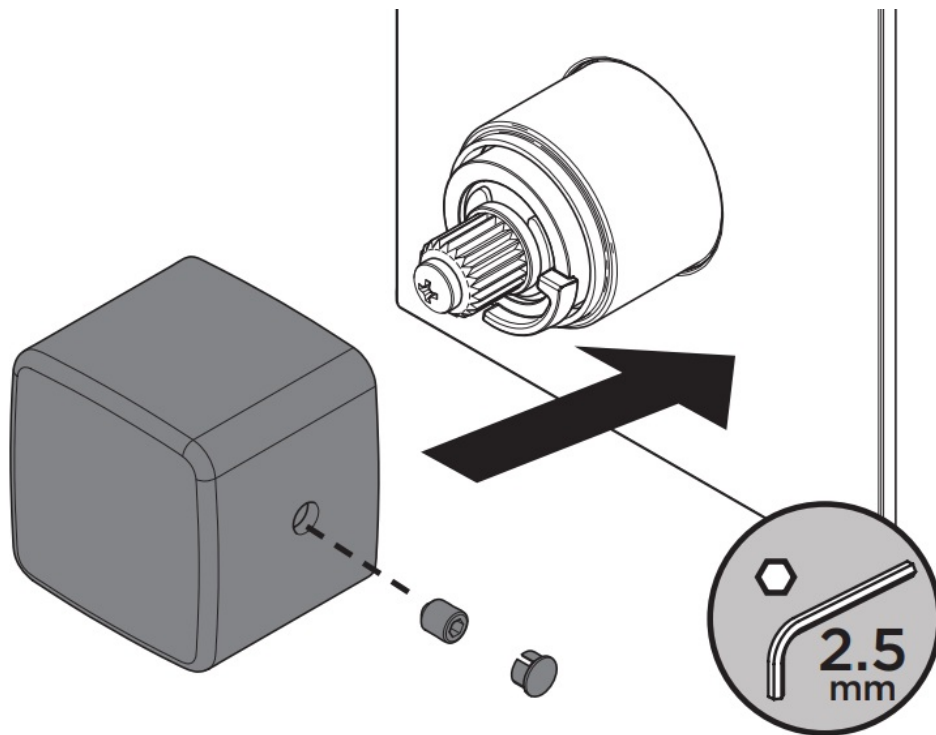
2. Turn the spindle to increase or decrease the temperature.

Check the temperature and adjust until you achieve the desired result.



Pre-set to 42°C

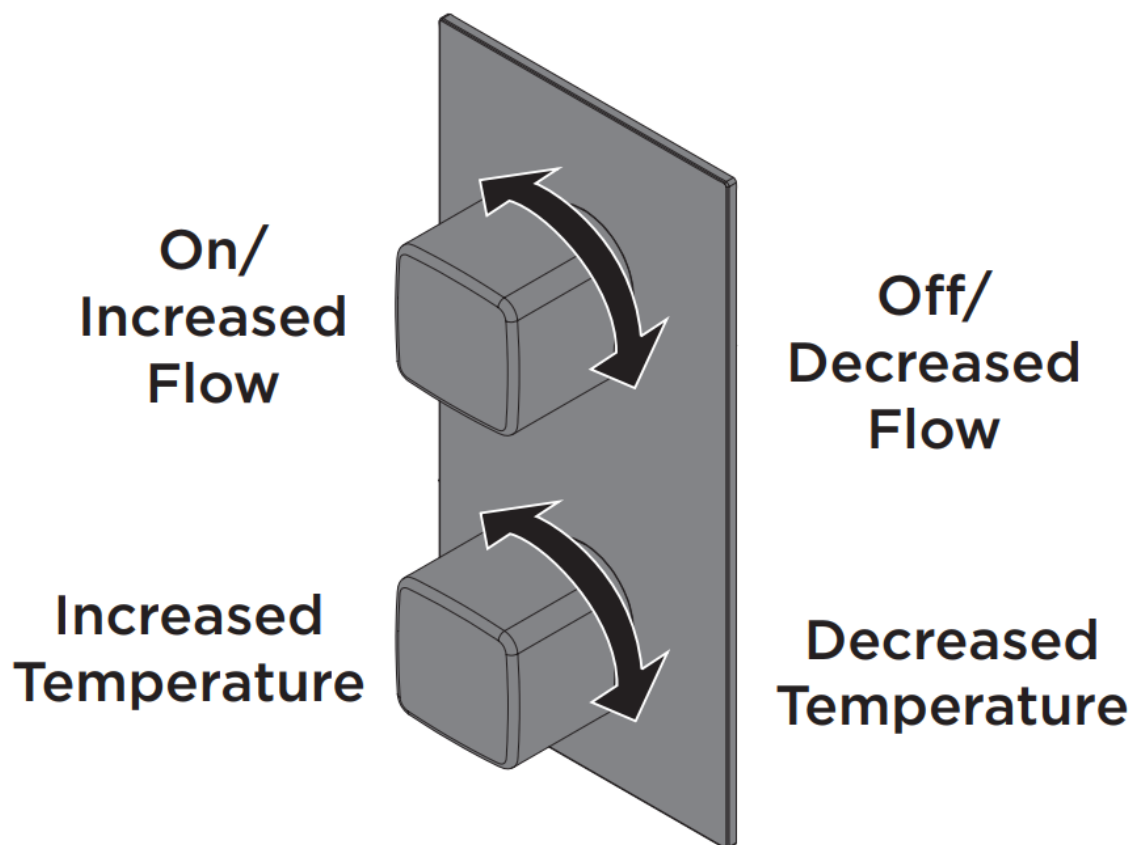
3. Fit the temperature handle back in the maximum hot position.



General Cleaning

Bristan products are made from premium materials, with hand polishing and electroplated finishes. Your taps or shower should be regularly cleaned with warm water, a mild pH-neutral liquid soap, and polished with a soft cloth. Any residues from soap, toiletries, etc. should be rinsed off straight after use. Household bleaches and cleaners contain harsh chemicals and may damage the surface finish. Avoid using abrasive cloths, scouring pads, scrub sponges, steel wool, or anything similar. Some surfaces such as nickel and pewter may be affected by the dye found in some cloths, so it is also important to avoid hanging cloths on spouts.

Operation

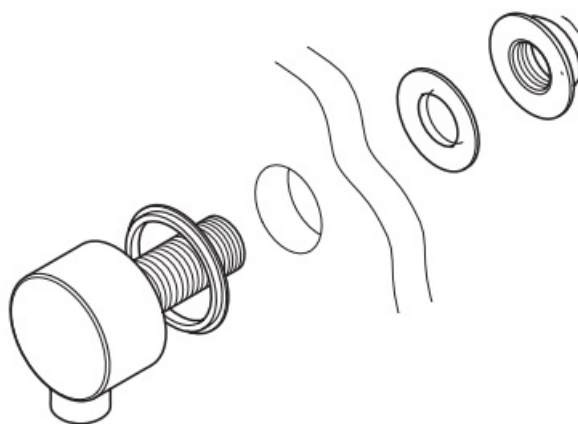


Wall Outlet Installation

Choose the location for the wall outlet and create a 25-30mm hole in the wall. Ensure your shower accessories have enough reach from that position. Finish the wall surface.

With rear access

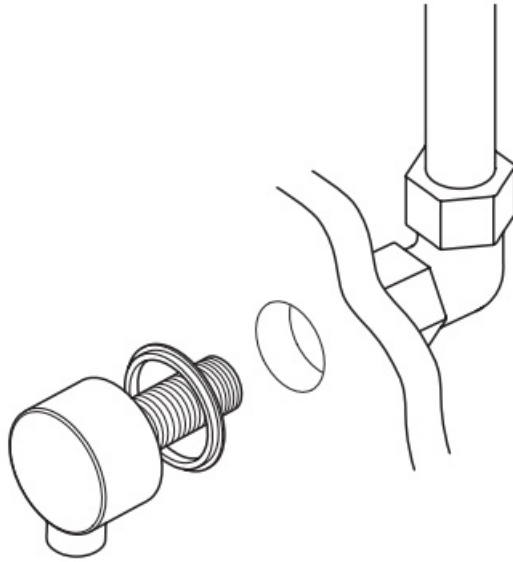
Fit the wall outlet, ensuring the washers have fitted either side of the wall. Go to Step 6 in the Installation Steps.



Servicing Intervals

To reduce the build-up of lime scale and to ensure this shower works to its maximum performance we recommend this shower is serviced every 6-12 months depending on the hardness of your water.

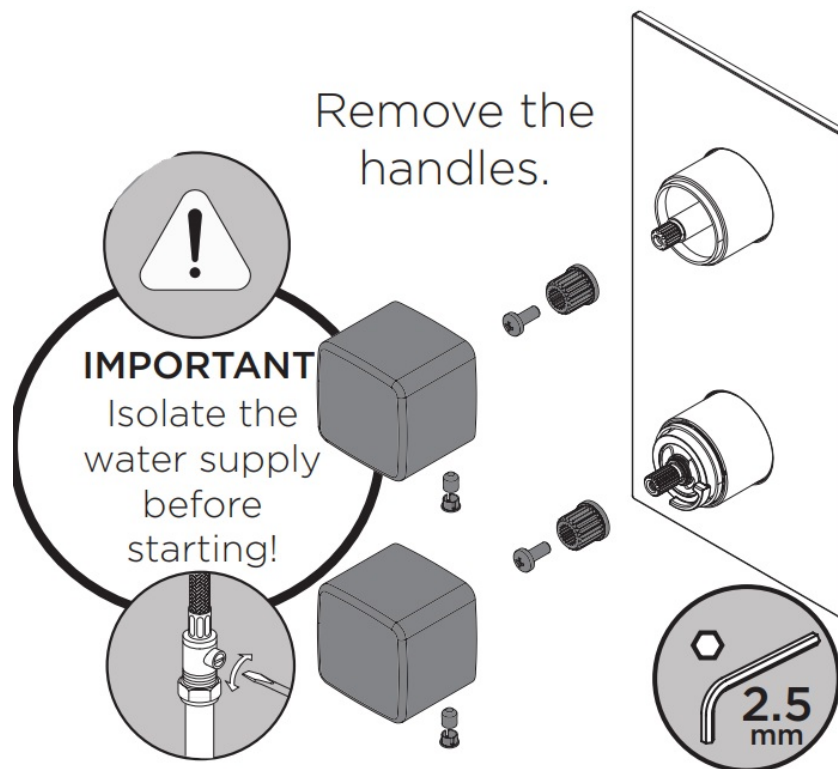
Without rear access



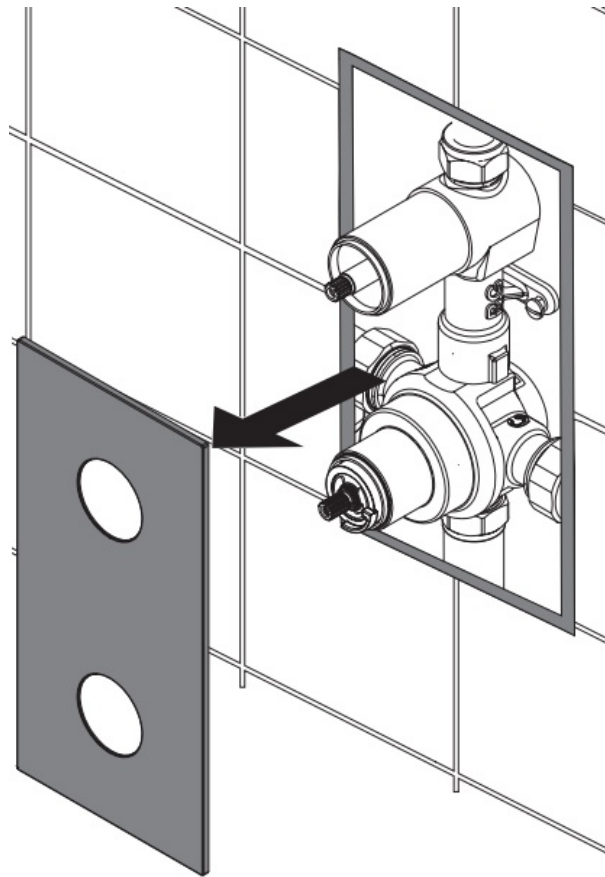
Follow Step 6 in the Installation Steps, fitting a 1/2" female connection at the hole in the wall (not supplied). Screw the wall outlet into the 1/2" female connection, using a suitable thread sealant ensuring the rubber seal is fitted to the back of the wall outlet.

Maintenance – Cartridge Cleaning

1.

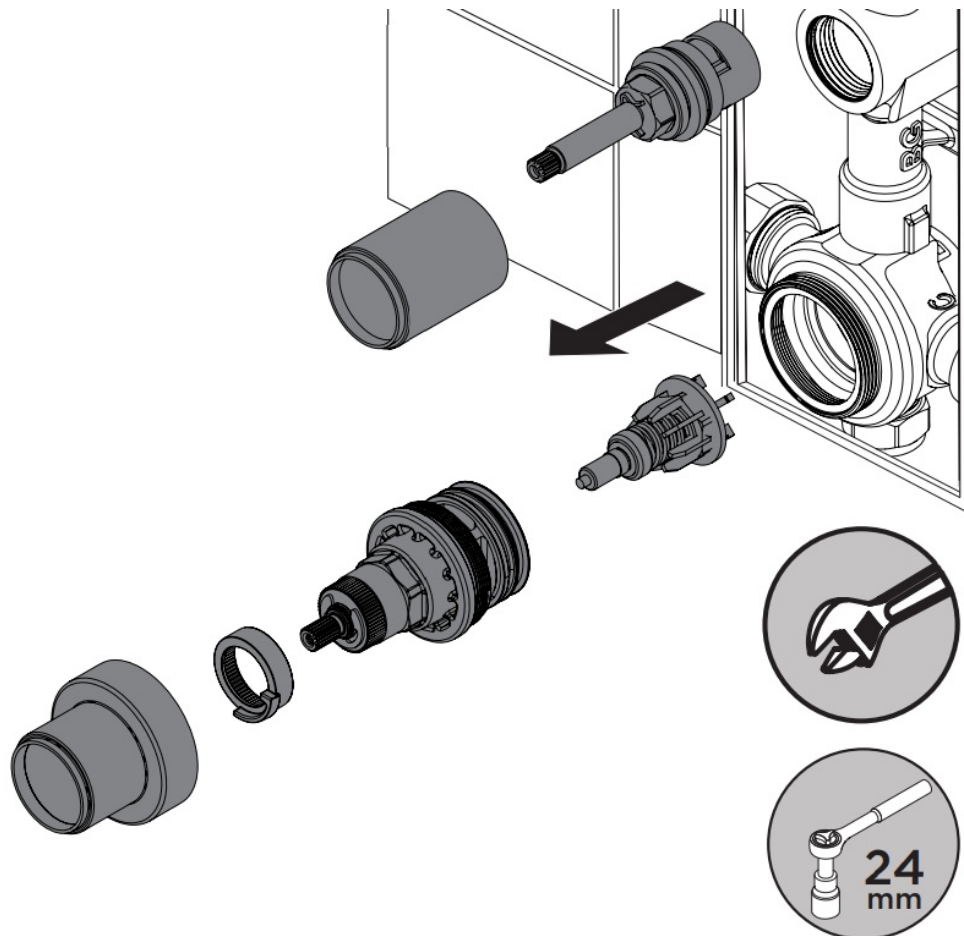


2. Gently remove the concealing plate from the wall.

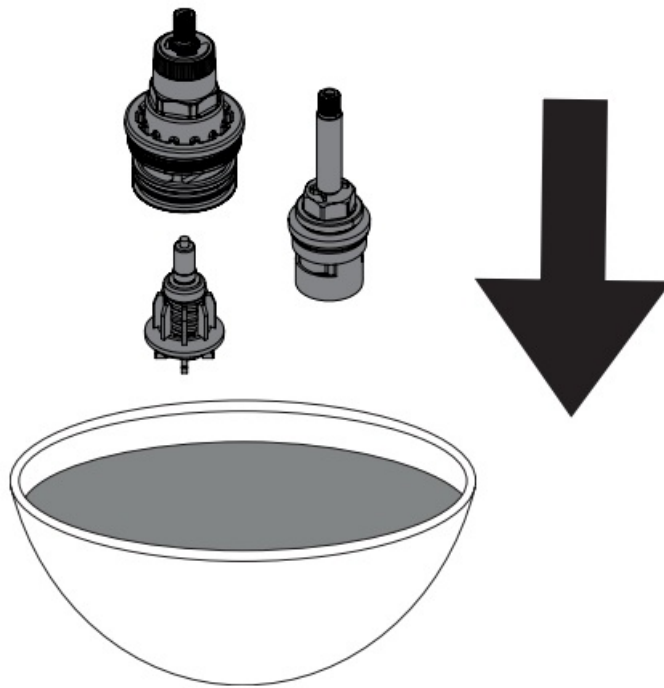


3. Unscrew the shrouds.

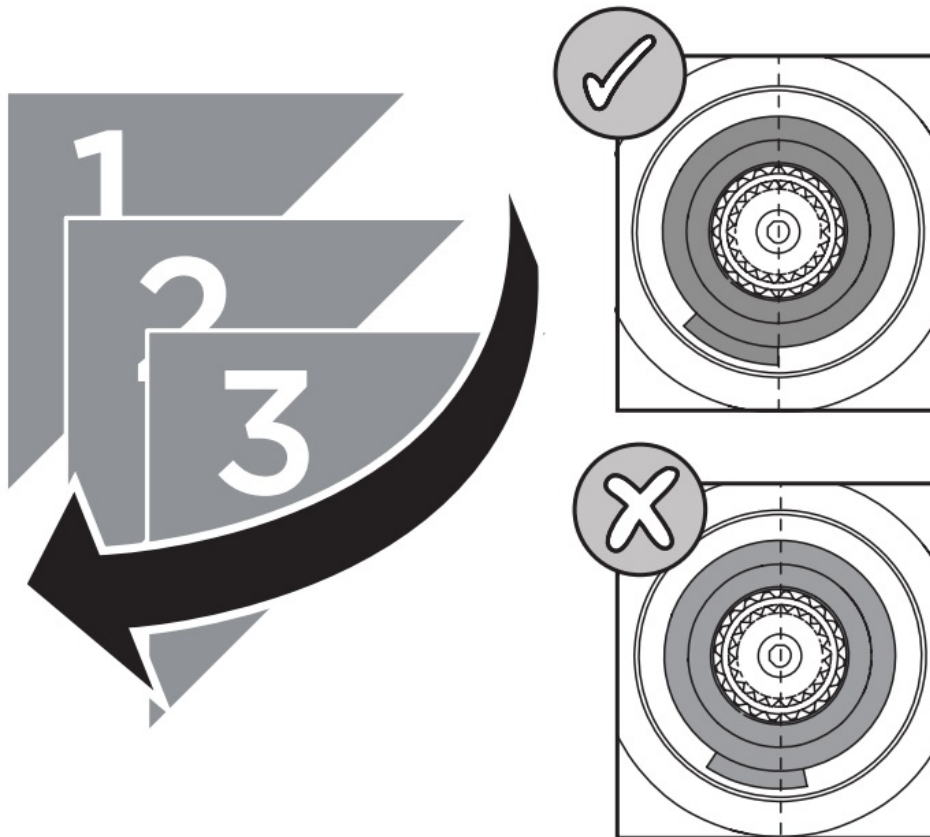
Remove the cartridges and pistons.



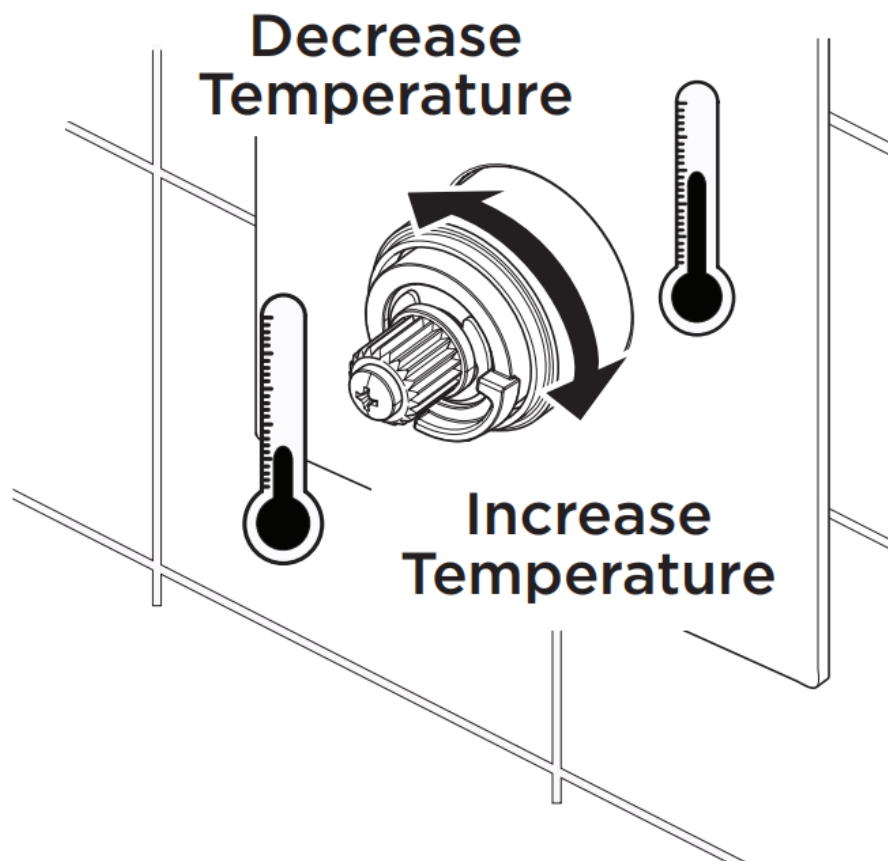
4. Remove any O-rings and soak all components in de-scaler and wash off clean water. Examine all seals and replace them if needed. Use WRAS-approved silicon-based grease on all seals.



5. Reverse the installation steps, ensuring the temperature stop is aligned correctly.



6. Follow the Temperature Adjustment Steps if required.



Troubleshooting

Symptom	Cause	Remedy
No flow or low flow rate	Partially closed isolation valve.	Open isolation valve.
	Instantaneous water heater cycles on and off as the flow rate or pressure is too low.	Increase water flow rate or pressure through the system.
	The Head of water is below the minimum distance required.	Refer to the specification for the minimum distance required.
	Are the water supply pressures balanced?	If pressures are unbalanced, a pressure-reducing valve should be used for optimum performance.
	Hot or cold water being drawn off elsewhere causes pressure changes or instantaneous boiler temperature changes.	Do not use other water outlets when using the shower.
	Airlock or partial blockage in the supply pipework.	Flush through pipework and filters to ensure the removal of debris and any airlocks.
	The hot/Cold water supply has failed	Check the hot and cold feeds. The shower will not work if either fails.
Maximum Water Temperature too Hot/Cold	Maximum Water Temperature needs adjusting.	Refer to the Temperature Setting section to set your desired maximum temperature.

Outlet Water Temperature too Hot/Cold	Filter/pipe blockage	Flush through pipework and filters to ensure the removal of debris and any airlocks.
	Installation conditions outside operating parameters.	Refer to the specification for the minimum distance required.
	Hot water temperature is less than 10°C above the required blend temperature	Adjust hot water temperature or wait for the water to reheat if a stored water system is used.
	Instantaneous water does not ignite because the water flow rate is too low.	Increase water flow rate through the system. Refer to the Maintenance section to clean/check the cartridge and filters for any damage. Contact your boiler manufacturer.
	Instantaneous water does not ignite because the water pressure is too low.	Refer to the specification for system requirements. Increase water pressure through the system. Contact your boiler manufacturer.
Only hot/cold water from Shower Valve	Inlet water supplies are reversed.	Check the water inlet connections are the correct way around: Hot on the left, Cold on the right when viewed from the front. Rework pipework as necessary.
	Filter/pipe blockage	Flush through pipework and filters to ensure the removal of debris and any airlocks.
Water dripping from the shower	This is normal for a short time after using the shower.	This is caused by residual water tension and the build-up of water in the shower.
	If water continues to drip, possibly due to the cartridge	Remove cartridge and clean, refer to the 'Maintenance' section before starting any maintenance.
The shower does not turn on	Closed isolation valve.	Open isolation valve.
	The mains water supply was turned off.	Turn on the mains' water supply.

Our Guarantee

At Bristan, we want to make things as easy as possible for our customers. That's why we offer solid guarantees on all our products, effective from the date of purchase, to give you peace of mind.

To start your free guarantee simply scan the QR code and register your product.

Alternatively, visit www.bristan.com/register.

For any other queries, please call our Customer Service on 0330 026 6273 where our expert team of advisors will be able to offer you any help and advice.

For full guarantee terms and conditions visit www.bristan.com/service-centre/guarantees.




<https://www.bristan.com/service-centre/guarantees>

Bristan Group Ltd.

UK: Bristan Group, B78 1SG.

EU: Masco Europe S.à.r.l., 14 Rue Strachen 6933 Mensdorf, Luxembourg.
Customer Service: +44330 026 6273
Web: www.bristan.com
Email: enquire@bristan.com
A Masco Company

Documents / Resources

	<p>BRISTAN COB SHCVO C Cobalt Thermostatic Recessed Dual Control Valve [pdf] Instruction Manual</p> <p>COB SHCVO C, Cobalt Thermostatic Recessed Dual Control Valve, COB SHCVO C Cobalt Thermostatic Recessed Dual Control Valve, Thermostatic Recessed Dual Control Valve, Recessed Dual Control Valve, Dual Control Valve, Control Valve, Valve</p>
---	--

References

- [B Register a product](#)

[Manuals+](#).