

BRISTAN COB BAS C Cobalt Basin Mono Mixer



BRISTAN COB BAS C Cobalt Basin Mono Mixer User Guide

[Home](#) » [BRISTAN](#) » BRISTAN COB BAS C Cobalt Basin Mono Mixer User Guide 

Contents

- [1 BRISTAN COB BAS C Cobalt Basin Mono Mixer](#)
- [2 Product Information](#)
- [3 FAQ](#)
- [4 Specifications](#)
- [5 Inlet Water Temperature](#)
- [6 Pack Contents](#)
- [7 Installation](#)
- [8 Operation](#)
- [9 General Cleaning](#)
- [10 Maintenance](#)
- [11 Troubleshooting](#)
- [12 Documents / Resources](#)
 - [12.1 References](#)

BRISTAN

BRISTAN COB BAS C Cobalt Basin Mono Mixer



Product Information

Specifications

- Dynamic Water Pressure:
 - Min: 0.3 bar
 - Max: 5.0 bar
- Maximum Static Pressure: 10.0 bar
- Product Code: COB BAS C, COB BAS BLK (D9)
- Inlet Water Temperature: Cold Water Supply, Hot Water Supply
- Inlet Connections: 1/2 BSP Flexible Tails

Installation Instructions

1. Prior to Installation
 - Adjustable Spanner
 - Hexagonal Keys
 - Pipe Cutter
2. Pack Contents
 - x1 Fixing Kit
 - x1 Flexible Tail

- x1 Tap
3. Secure the tap to the basin by using the fixing kit.
 4. Connect the hot and cold water supplies.
 - Screw in the flexible tails by hand. DO NOT OVERTIGHTEN.
 5. Fit the tap to the basin, ensuring the plinth is in place.
 6. Flexible Tail Positions
 - Slight bend
 - Curved round
 - Kinks
 - Twists

Operation

Your tap is now ready for use. On/Off: Turn the tap handle clockwise to turn it off and counterclockwise to turn it on. Hot/Cold Water: Adjust the handle position to control the water temperature. Move it towards the blue side for colder water and towards the red side for hotter water.

General Cleaning

Bristan products are made from premium materials, with hand polishing and electroplated finishes. To keep your tap clean:

1. Regularly clean your taps or shower with warm water and a mild pH-neutral liquid soap.
2. Polish the tap with a soft cloth.
3. Rinse off any residues from soap, toothpaste, shampoos, and shower gels immediately after use to avoid blemishes.

Servicing Your Tap

We recommend servicing your tap at least once every year to prolong its life. To remove the cartridge for servicing:

- Scan the QR code with your smart phone or tablet to watch a video demonstration.
- Alternatively, visit www.youtube.com/BristanTV for a step-by-step guide.

Avoid using household bleaches and cleaners with harsh chemicals as they may damage the surface finish. Also, do not use abrasive cloths, scouring pads, scrub sponges, steel wool, or anything similar. For special finish taps, please follow care guidelines to avoid damage.

Spare Parts

To replace any spare parts for your tap:

- Scan the QR Code to access the spare parts section on www.bristan.com.
- Alternatively, visit www.bristan.com and search for your tap model to find the appropriate spare parts.

FAQ

Q: What is the minimum and maximum water pressure for this product?

A: The minimum water pressure is 0.3 bar, and the maximum water pressure is 5.0 bar.

Q: Can I modify the product?

A: No, modifying the product in any way will invalidate the guarantee.

Q: How often should I service my tap?

A: We recommend servicing your tap at least once every year to prolong its life.

Q: How do I clean the tap?

A: Regularly clean your tap with warm water and a mild pH-neutral liquid soap. Polish it with a soft cloth. Rinse off any residues immediately after use.

Q: Where can I find spare parts for my tap?

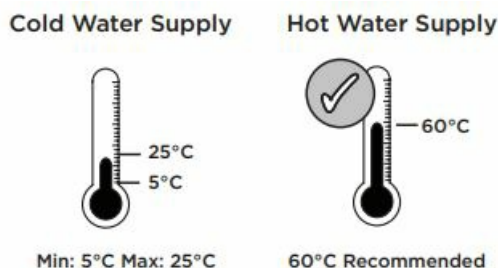
A: You can find spare parts for your tap by scanning the QR Code or visiting www.bristan.com and searching for your tap model.

Specifications

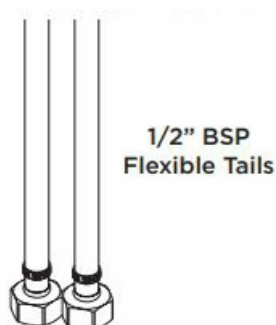
Dynamic Water Pressure



Inlet Water Temperature



Inlet Connections



Tools You'll Need

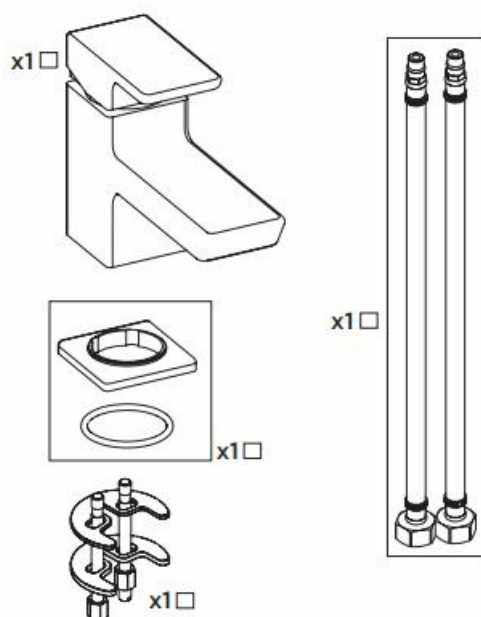


Prior to Installation

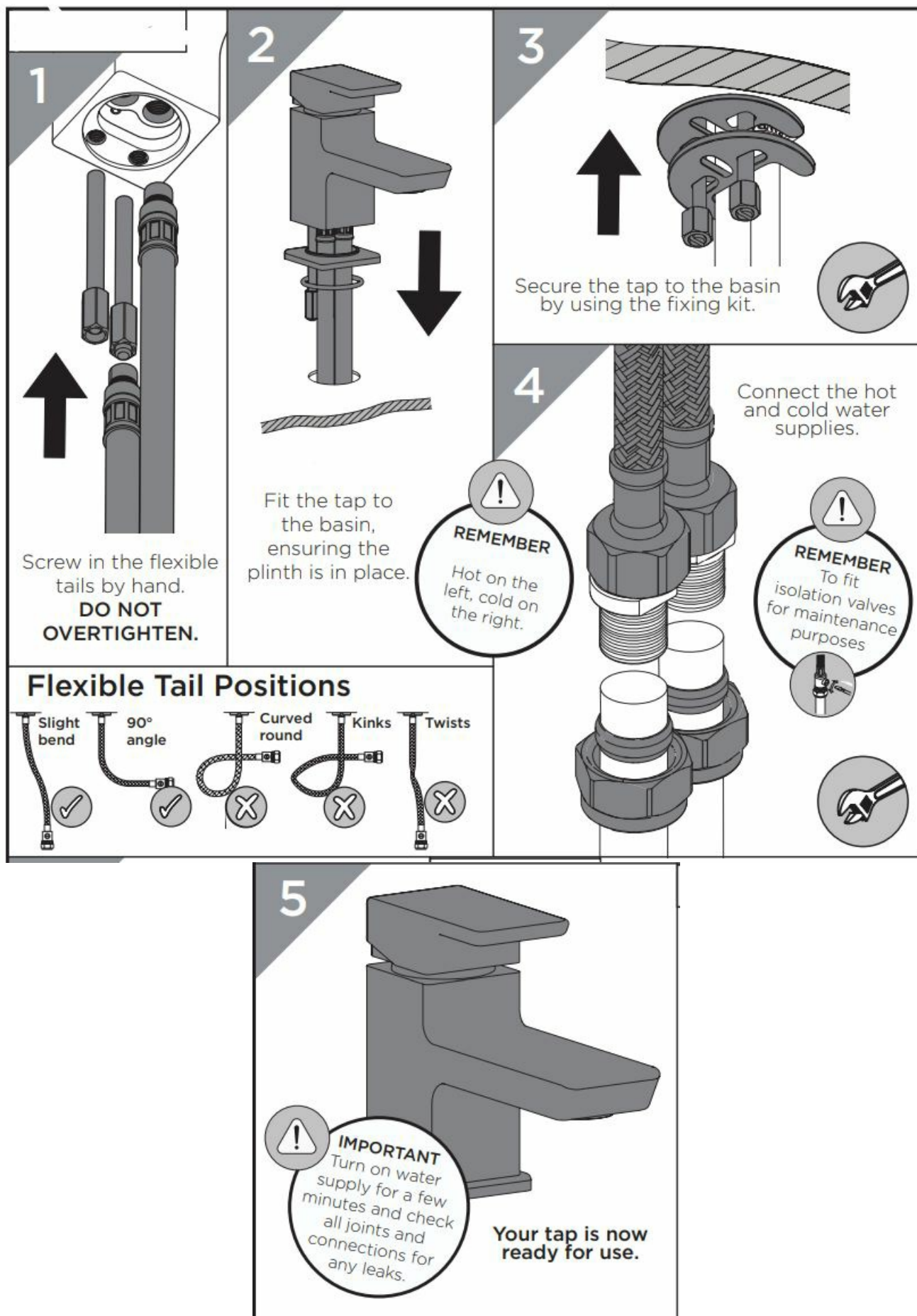
All products manufactured and supplied by Bristan are safe to use provided that they are installed, operated and receive regular maintenance in accordance with these instructions. This product needs to be installed in accordance with, and meet the requirements of the Water Supply (Water Fittings) Regulations 1999 and current by-laws. For full Installation Requirements & Notes (IRN) please visit wras.co.uk/directory. Isolation valves must be fitted to the inlet water supplies to ensure ease of future maintenance. Before installing this product the water supply must be thoroughly flushed in order to remove any swarf, solder etc. This product must not be modified in any way as this will invalidate the guarantee. Full access must be made available for future maintenance/servicing purposes. If in doubt, contact a registered plumber or your Local Water Authority or the Secretary of the Institute of Plumbing, address as follows:- The Institute of Plumbing, 64 Station Lane, Hornchurch, Essex, RM12 6NB,

- Tel: 01708 472791

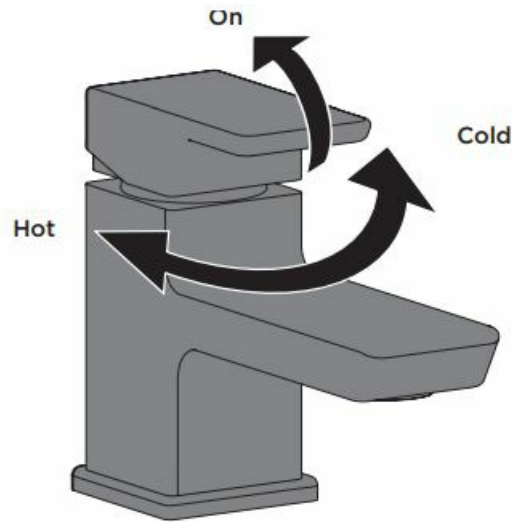
Pack Contents



Installation



Operation

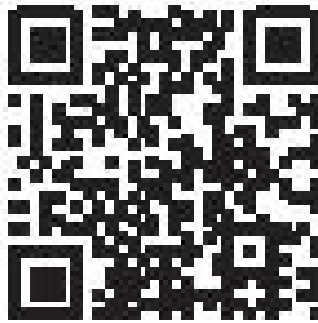


General Cleaning

Bristan products are made from premium materials, with hand polishing and electroplated finishes. Your taps or shower should be regularly cleaned with warm water, a mild pH-neutral liquid soap, and polished with a soft cloth. Any residues from soap, toothpaste, shampoos and shower gels can cause blemishes if not rinsed off straight after use. Household bleaches and cleaners contain harsh chemicals and may damage the surface finish. Avoid using abrasive cloths, scouring pads, scrub sponges, steel wool or anything similar. Some surfaces such as nickel and pewter may be affected by the dye found in some cloths, so it is also important to avoid hanging cloths on spouts. Please note that not following care guidelines on special finish

Servicing Your Tap

We recommend servicing your tap at least once every year to prolong its life. To see a video showing how to remove the cartridge for servicing, scan the QR code with your smart phone or tablet.



Alternatively, visit www.youtube.com/BristanTV

Spare Parts

To replace any spare parts for your tap, why not scan the QR Code or visit

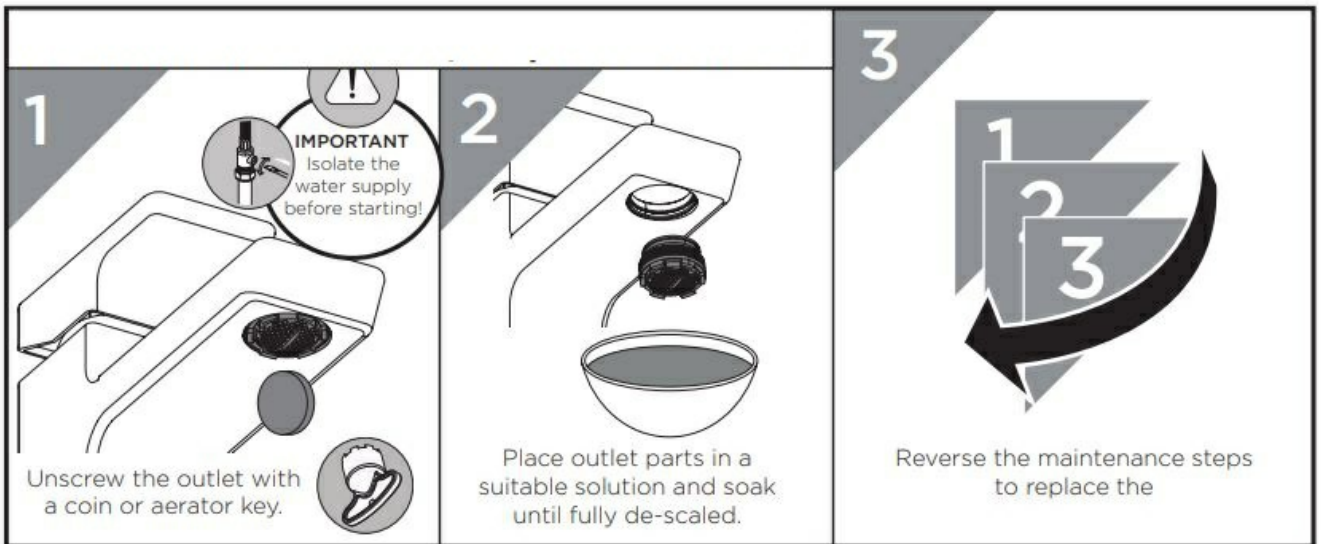
- www.bristan.com

and search for your product.

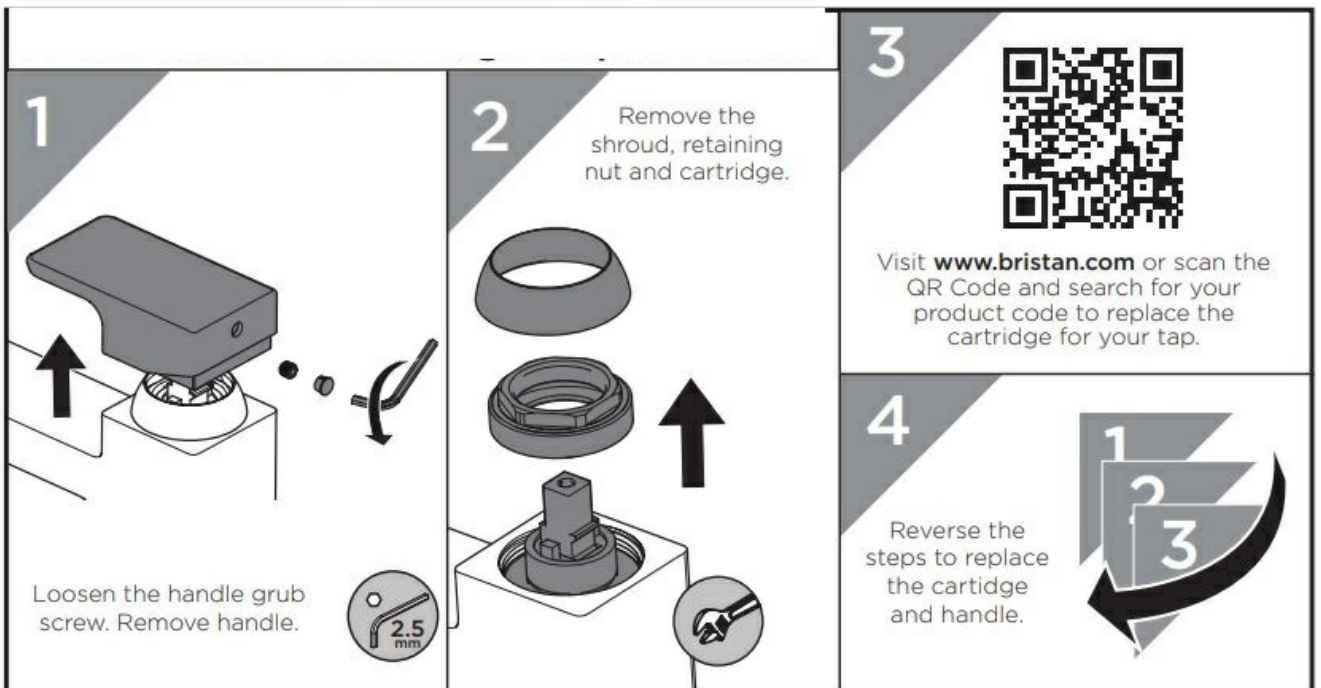


Maintenance

- Maintenance – Clean/Replace Outlet



- Maintenance – Cartridge Replacement



Troubleshooting

Symptom	Cause	Remedy
No flow or low flow rate	Partially closed isolation valve.	Open isolation valve.
	Instantaneous water heater cycles on and off as flow rate or pressure is too low.	Increase water flow rate or pressure through the system.
	The head of water is below the minimum distance required.	Refer to the specification for the minimum distance required.
	Hot or cold water being drawn off elsewhere causing pressure changes or instantaneous boiler temperature changes.	Do not use other water outlets when using the taps.
	Airlock or partial blockage in the supply pipework.	Flush through pipework to ensure the removal of debris and any airlocks.
Water dripping from taps	This is normal for a short time after using the taps.	This is caused by residual water tension, the build up of water in the tap body.
	If water continues to drip, possibly due to the ceramic disc valves	Remove valves and clean, refer to the 'Maintenance' section before starting any maintenance.
Taps do not turn on	Closed isolation valve.	Open isolation valve.
	Mains water supply is turned off.	Turn on the mains water supply.

Notes

Please use this space for any notes you or your installer may have regarding the installation/plumbing of this product.

Contact Us

Bristan Group Ltd.

- UK: Bristan Group, B78 1SG.
- EU: Masco Europe S.à.r.l. 14 Rue Strachen 6933 Mensdorf Luxembourg

Customer Service: +44330 026 6273

- Web: www.bristan.com
- Email: enquire@bristan.com

At Bristan, we want to make things as easy as possible for our customers. That's why we offer solid guarantees on all our products, effective from the date of purchase, to give you peace of mind. To start your free guarantee simply scan the QR code and register your product. Alternatively, visit

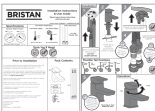
- www.bristan.com/register

to register your product via a computer. For full guarantee terms and conditions visit

- www.bristan.com/guarantees.



Documents / Resources

	<p>BRISTAN COB BAS C Cobalt Basin Mono Mixer [pdf] User Guide COB BAS C Cobalt Basin Mono Mixer, COB BAS C, Cobalt Basin Mono Mixer, Basin Mono Mixer, Mono Mixer, Mixer</p>
---	---

References

- [B Home](#)
- [B Guarantees](#)
- [B Register a product](#)
- [User Manual](#)