

Brio TROE600COL Filter System



Brio TROE600COL Filter System User Guide

[Home](#) » [BRIO](#) » Brio TROE600COL Filter System User Guide 

Contents

- 1 Brio TROE600COL Filter System
- 2 Product Information
- 3 Product Usage Instructions
- 4 FAQ
- 5 Replace Filters
- 6 Flushing the Filters
- 7 Documents / Resources
 - 7.1 References
- 8 Related Posts



Brio TROE600COL Filter System



Product Information

Specifications

- **Models:** TROE600COL, TROE800COL, TROE1000COL
- **Filter Indicator Lights:** Flash when filters need to be replaced
- **Flushing Time:** Approximately 60 seconds
- **Automatic Flushing Mode:** Disables flush button

Product Usage Instructions

Replace Filters

When the filter indicator lights flash, indicating the need for replacement, follow these steps:

1. Press the power supply button to turn off the system.
2. Locate the filter(s) that need replacement.
3. Remove the old filter(s) and dispose of them properly.
4. Insert the new filter(s) into their designated slots.
5. Press the power supply button to turn the system back on.

It is essential to flush new filters before using them to ensure optimal performance:

1. Open the faucet connected to the system.
2. Press the flush button (1) once to initiate the flushing process.
3. The flushing process will take approximately 60 seconds to complete.
4. To stop the flushing process at any time, press the flush button again.
5. **Note:** The flush button will not work if the system is in automatic flushing mode.

FAQ

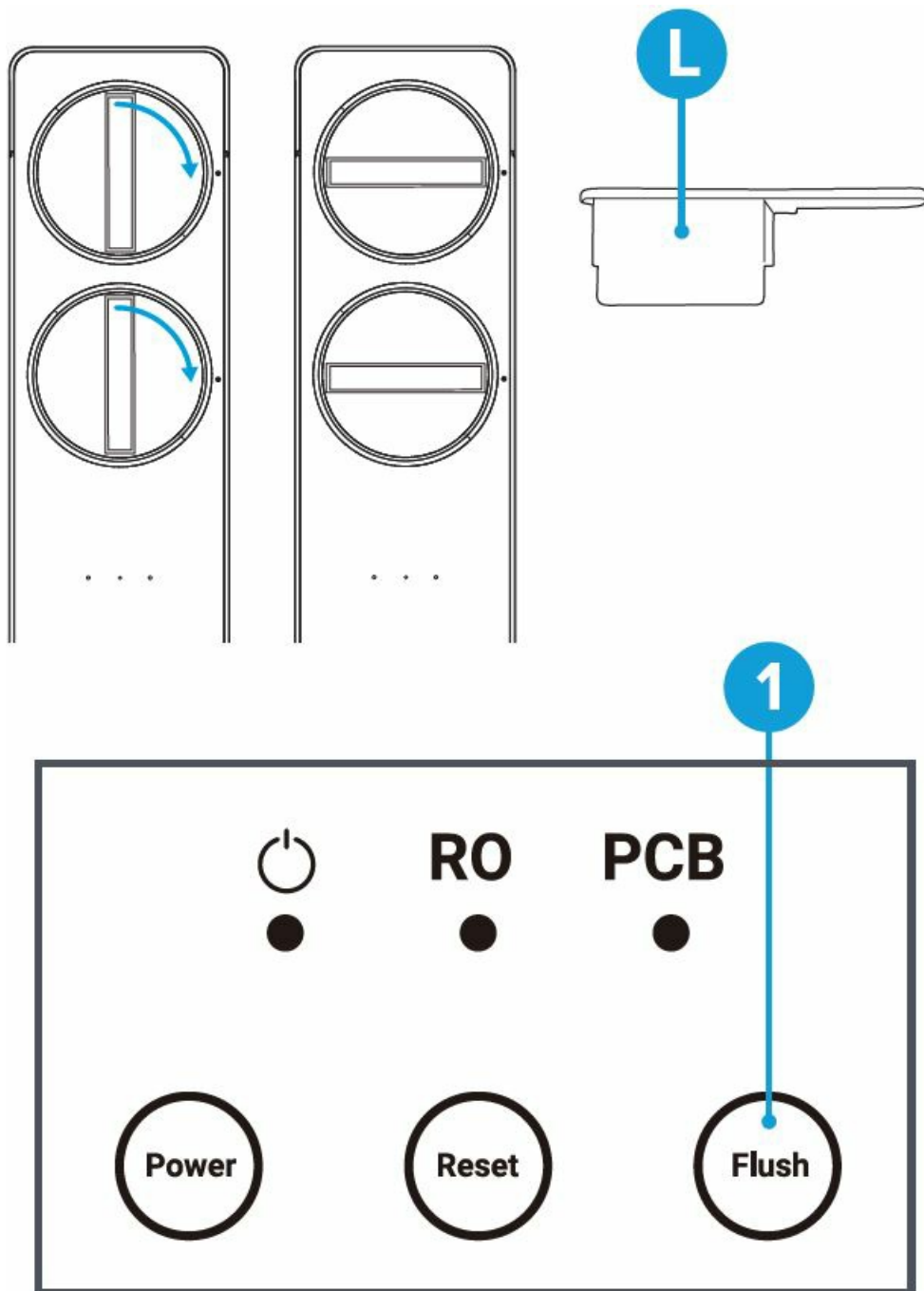
- **Q:** How often should I replace the filters?
- **A:** The filters should be replaced when the filter indicator lights start flashing, indicating they are no longer effective.

Replace Filters

When one or both of your filter indicator lights begin to flash, the filter(s) need to be replaced.

To change the filter

- **A.** Press the power supply button on the unit until the unit powers off, then unplug the power cord. Turn off the water supply. Open the faucets and drain the remaining water in the system. Remove the compartment cover of the filter to be replaced.
- **B.** Grasp the handle of the expired filter and rotate counterclockwise to unlock from compartment. If you encounter resistance, use the filter release tool (L). Once the expired filter has been unlocked, remove it from the compartment.
- **C.** Insert new filter, rotating clockwise to lock into place. The filter handle should align with a dot on the RO filter system as shown in the below illustration. Reinstall the compartment cover.
- **D.** Turn on the water supply, then plug the unit back in. Press and hold the reset button until the filter indicator light stops flashing (approximately 3 seconds). Proceed to the “Flushing the Filters” section.



Flushing the Filters

- Always flush new filters before using them.
- Open faucet. Press the flush button (1) once.
- The flushing process takes approximately 60 seconds.
- To stop the flushing process at any time, press the flush button again.

NOTE: The flush button does not work when the system is in automatic flushing mode.



[Brio TROE600COL Filter System](#) [pdf] User Guide
TROE600COL Filter System, TROE600COL, Filter System, System

References

- [User Manual](#)

[Manuals+](#), [Privacy Policy](#)

This website is an independent publication and is neither affiliated with nor endorsed by any of the trademark owners. The "Bluetooth®" word mark and logos are registered trademarks owned by Bluetooth SIG, Inc. The "Wi-Fi®" word mark and logos are registered trademarks owned by the Wi-Fi Alliance. Any use of these marks on this website does not imply any affiliation with or endorsement.