



## brinno Command Center Software Instructions

[Home](#) » [brinno](#) » brinno Command Center Software Instructions 

### Contents

- [1 Brinno Command Center Instructions](#)
- [2 Upgrade Camera Firmware](#)
- [3 Download Software to Computer](#)
- [4 Brinno Command Center](#)
  - [4.1 Connecting steps](#)
- [5 Appendix I.](#)
- [6 Download](#)
- [7 Support & Download](#)
- [8 Documents / Resources](#)
  - [8.1 References](#)
- [9 Related Posts](#)

### Brinno Command Center Instructions

Official Site <https://www.brinno.com>



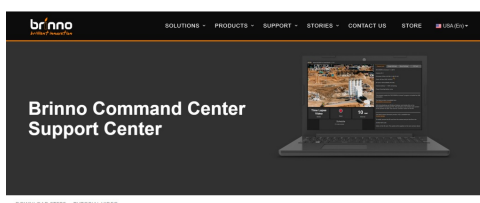
Upgrade Camera Firmware

1 Using a Windows computer [go to](#) :



Brinno Command Center

<https://www.brinno.com/support/support-center/Command-Center>



1.2 Go to TLC2000/TLC2020 [support page](#) to download firmware in your desired language. Follow the [PDF instructions](#) or [video tutorial](#) to complete firmware upgrade.

#### Download Steps

Please make sure you follow the steps and don't miss anything

##### STEP 1 - Follow Manual Instructions

**IMPORTANT :**  
Follow the instructions in the Command Center Manual before downloading or using the program.

[Download](#)



##### STEP 2 - Upgrade Firmware

**IMPORTANT :**  
1. Go to the TLC2000/TLC2020 support page and download firmware in your desired language.  
2. Meet download firmware with Windows only (not compatible with macOS).  
3. Follow the PDF instructions or video tutorial to complete firmware upgrade.

[Go to support page](#)



**Firmware Upgrade Procedure**

Procedure can be found here :

[Video Tutorial](#)

[PDF Instructions](#)



Download Software to Computer

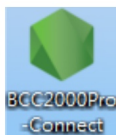
## 2.1 Download the Brinno Command Center Software.

\*If your download is blocked go to the Appendix on page 15 for detailed instructions on how to download the software.

##### STEP 3 - Download Software

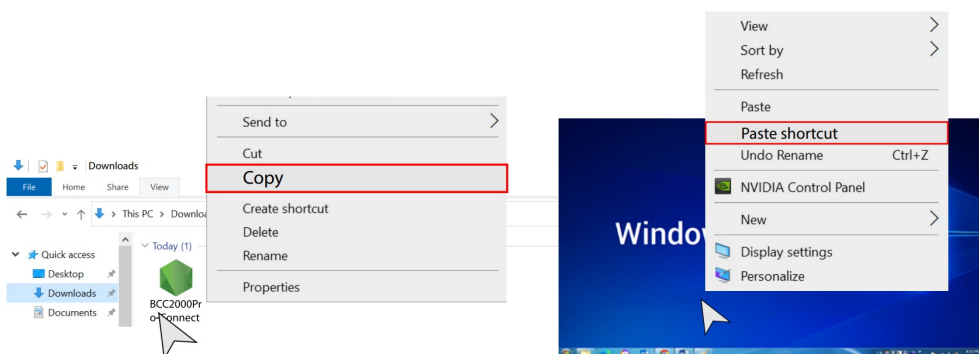
**IMPORTANT :**  
Follow the instructions in the *Command Center Manual* to successfully download the Command Center platform.

[Download](#)



## 2.2 Create Shortcut

After software is downloaded copy the shortcut to a convenient location like your desktop.



Brinno Command Center

### 3.1 Connect to Camera

Plug the Cable into your computer. Your camera should be recognized in less than 5 seconds.

#### > Error

If you don't receive an alert that your camera is plugged in then unplug the cable and try again.



1. Plug the Cable
2. Connection Check "TLC2000"

3.2 Go to the folder you saved the command center file, double click to open the **Brinno Command Center software**.

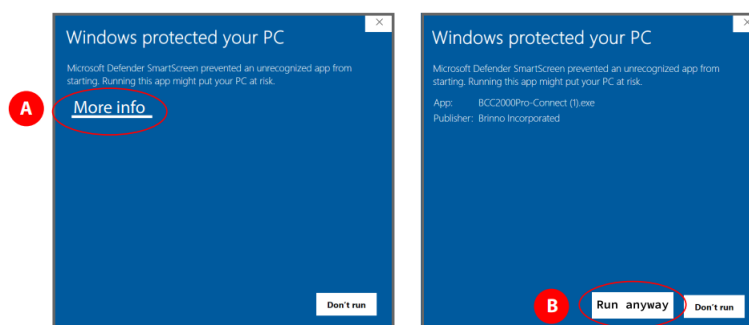
**NOTE** Before opening the Command Center please make sure your camera is already connected to your computer.



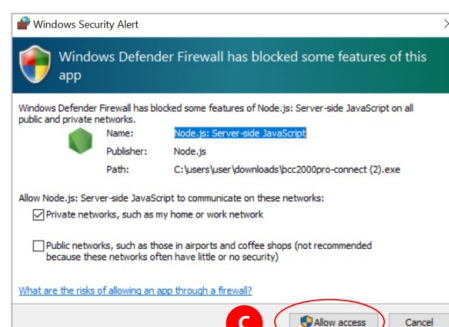
(1) Double Click

3.3 If opening the software is blocked.

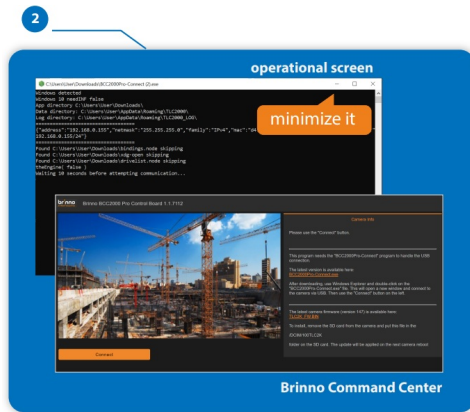
You may have another pop-up warning message, click "more info" and then "run anyway".



There may be an additional pop up from Windows Defender or your anti-virus software, click "Allow Access" to finish the software download.



3.4 When the software starts an **operational screen** will pop-up followed by your **web browser** popping up with the **Brinno Command Center** page.

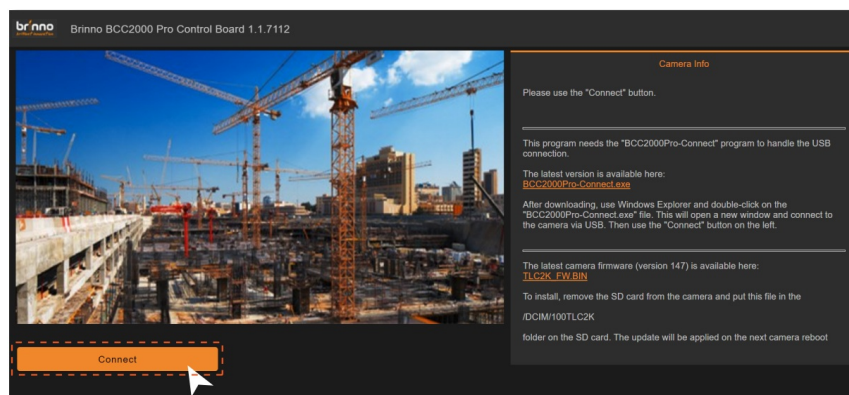


## (2) POP-UP

### Warning

- The operational screen will need to **continue running in the background** while you are using the Brinno Command Center.
- Keep the **operational screen minimized**, if you close the page then you will disrupt your camera connection.
- The text you will see is the **camera connecting** and transferring its internal data to the Command Center.

3.5 Click **Connect** on the bottom left corner to complete the camera connection.



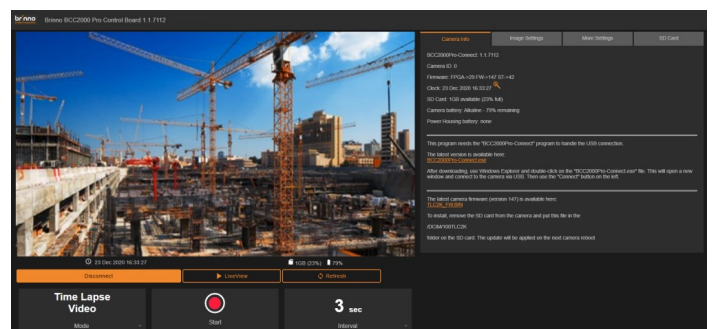
3.6 Once connected you will be able to check camera information, change settings and access your camera live view.

### Note

- **If you are a long time Brinno user**  
The functions found in the Command Center will be familiar because they mirror your TLC2000 camera functions.

### Warning

- **If your camera is already recording**  
you will not be able to access the live view or change settings – stop recording in order to gain access to all platform capabilities.



## Connecting steps

- (1) **Connect your camera** – click “connect” to connect your camera to the platform and access camera live view and files on SD card
- (2) **Live view** – click to access camera live view **when camera is not recording**
- (3) **Start/ Stop recording**
- (4) **Disconnect** – click when finished using the platform to disconnect your camera from the platform

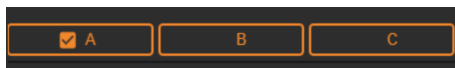


1. **SD card**
2. **Connect**

## 1. Image Setting Tab

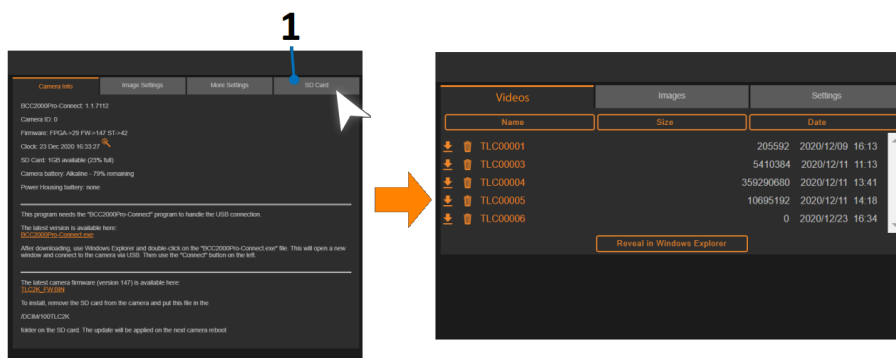
### > New feature

Through the **Settings tab**, create and save up to **three setting combinations** that address different locations and environmental conditions.



## SD Card Tab

> Use the SD Card tab to access time lapse files saved on your SD card.



1. **SD Card**

## Videos Tab

## Delete files



The trash can icon deletes files permanently off your SD card.

## Download



The download symbol allows you to download files directly onto your computer.

## Download Multiple Files

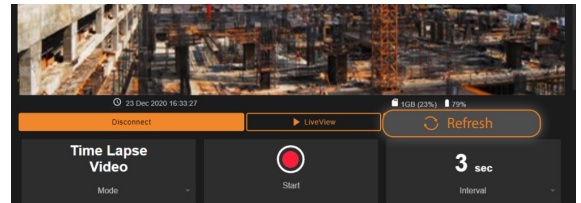
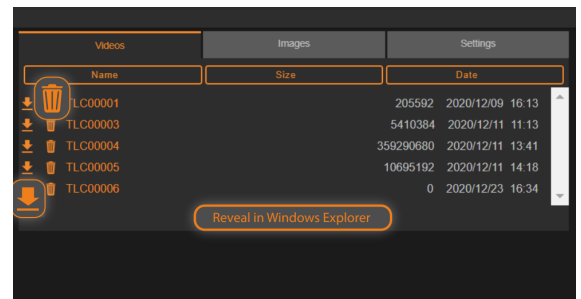
Reveal in Windows Explorer

Reveal in Windows Explorer button will open up your computer file manager and allow you to download multiple files at once.

## Renew Camera Status

Refresh

Use the refresh button to renew camera status including SD card and battery. This can be done while the camera is recording.



## Appendix I.



Download

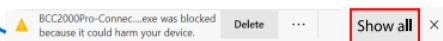
## If Download is Blocked...

### Microsoft Edge

Depending on the browser you are using the download might be blocked, particularly if you are using Microsoft Edge.

### You will need to click

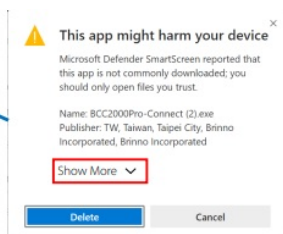
1

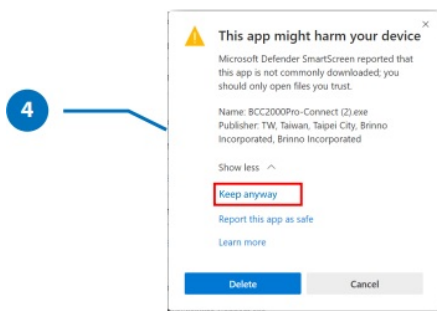


2



3





- (1) Show all
- (2) Keep
- (3) Show More ✓
- (4) Keep Anyway

### Support & Download



Brinno Command Center

<https://www.brinno.com/support/support-center/Command-Center>



Firmware Update

<https://www.brinno.com/support/support-center/TLC2020>



Firmware Update Tutorial



[www.brinno.com](http://www.brinno.com)





[brinno Command Center Software](#) [pdf] Instructions  
Command Center Software, Center Software, Command Software, Software

## References

- [b Brinno | The world leader in time lapse cameras](#)
- [b Brinno | The world leader in time lapse cameras](#)
- [b Brinno Support Center: Command Center](#)
- [b Brinno Support Center: TLC2020/ TLC2000](#)