



Brinno **EMPOWER**  
**TLC2020**

## brinno Command Center Instructions

[Home](#) » [brinno](#) » brinno Command Center Instructions 

### Contents

- [1 brinno Command Center](#)
- [2 Instruction](#)
- [3 Download & Install Brinno Commoand Center](#)
- [4 Install offline Brinno Command Center](#)
- [5 Before using Brinno Command Center](#)
- [6 Brinno Command Center Step by Step](#)
- [7 Appendix & Support](#)
- [8 Documents / Resources](#)
  - [8.1 References](#)
- [9 Related Posts](#)



**brinno Command Center**




## Instruction

brinno

SOLUTIONSPRODUCTSSUPPORTCASE STUDYSTORE

English

Brinno Command Center Support Center



Compatibility:

Requires Brinno's Camera Extender Kit (AFB0300), both cable and multi-task dongle, to function.  
Laptop/tablet must be Windows (7, 8, 8.1, 10 or 11) with 64-bit OS

Download Steps

Please make sure you follow the steps and don't miss anything

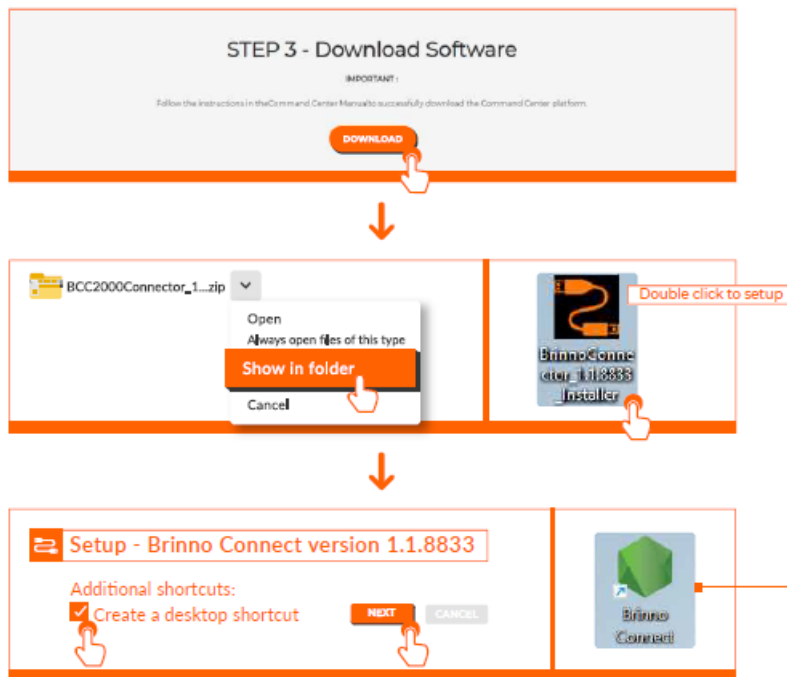
STEP 1 - Follow Manual Instructions

IMPORTANT:  
Follow the instructions in the Command Center Manual before downloading or using the program.

DOWNLOAD

Go to TLC2000 / TLC2020 support page to download firmware in your desired language. Follow the PDF instructions or video tutorial to complete firmware upgrade.

## Download & Install Brinno Command Center



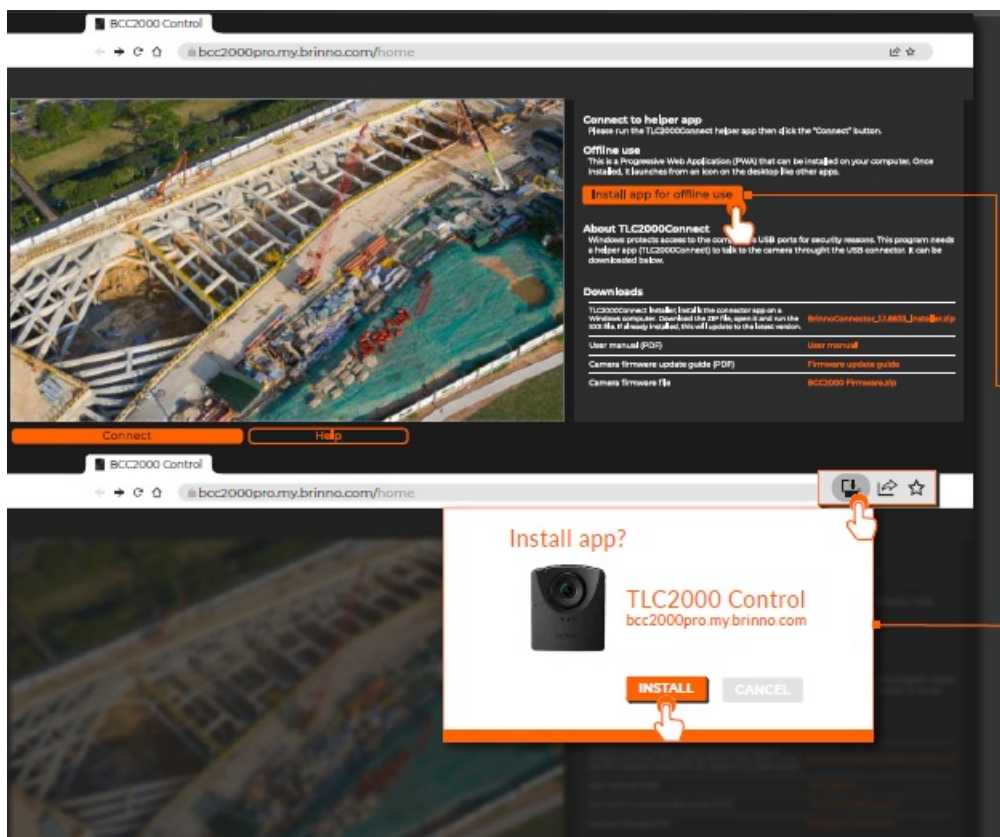
### Download the Brinno Command Center installer.

Download the installation file and follow system instructions to complete the installation.

### Create Shortcut.

Create a shortcut on the desktop by selecting “Create a desktop shortcut”.

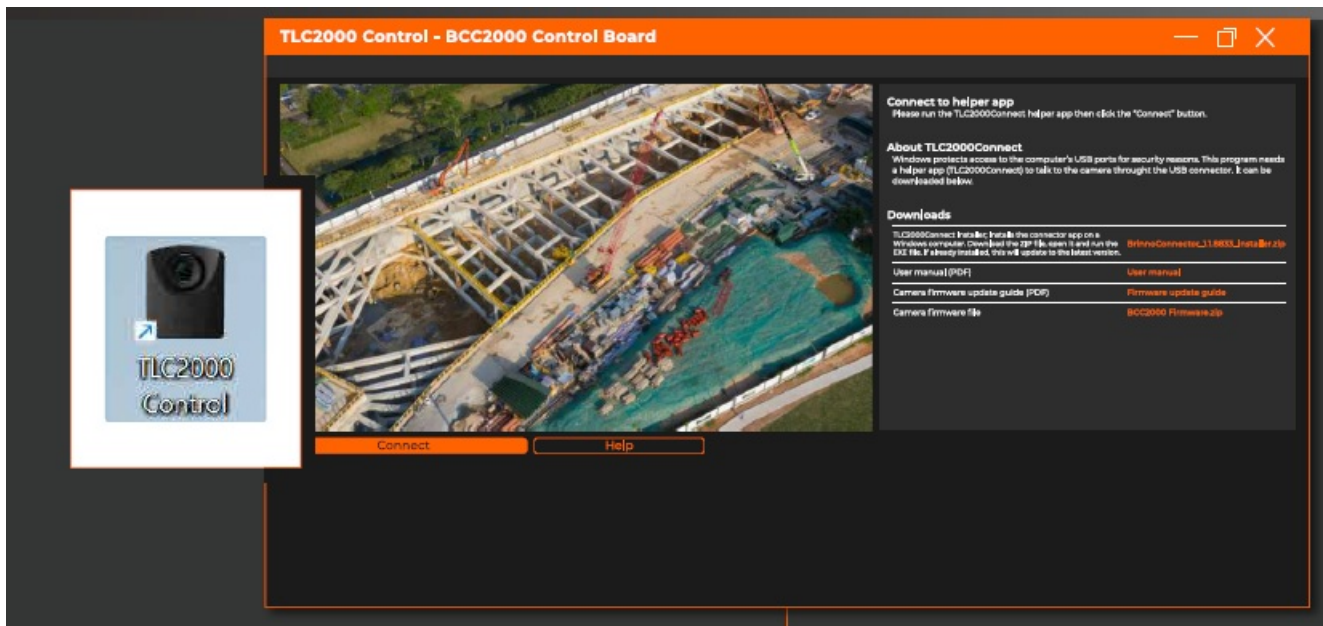
### Install offline Brinno Command Center



After installing the online Brinno Command Center, the computer will automatically execute Brinno Connect and open the command center with the default browser.

Click “Install app for offline use” to install offline Brinno Command Center. (Mandatory step)  
The download button might not appear immediately, so please wait for it to appear before clicking.

Click “INSTALL” once the reminder window pops out.



Once the offline Brinno Command Center is successfully installed, the offline command center window will pop out, and then you can close the online command center.

## Before using Brinno Command Center



### Install batteries to the Power Housing Battery Slot correctly.

Install 8 AA batteries on one side. If correctly inserted, the LED lights up. Next, remove one battery from the same side so the LED light turns off. Install another 8 AA batteries on the other side, if correctly inserted, the LED lights up again. Once confirmed that both sides of batteries were inserted correctly, insert the removed battery back to the battery slot. This will confirm that all 16 AA batteries were installed correctly.

Connect Brinno Camera Extender Kit (AFB1000) and battery slot to the camera.

Plug the cable into the Multi-task Dongle using the port on the left side. Plug the Battery Slot Micro USB connector

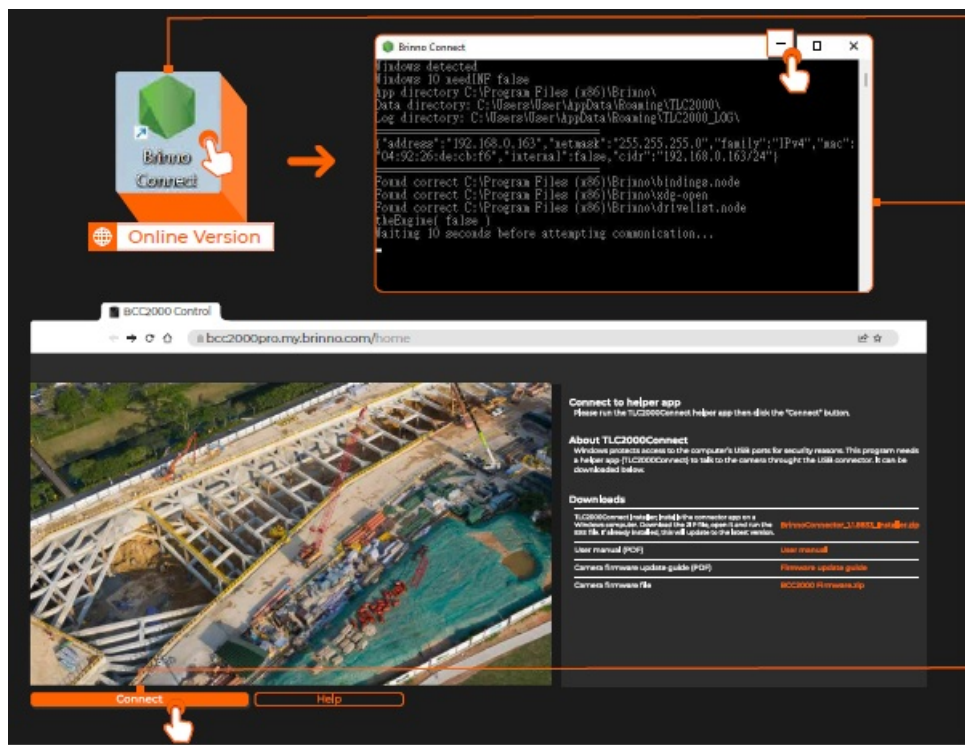
into the port on the right side. Restart the camera – the dongle LED will turn GREEN, indicating you are ready to start filming.

## PLEASE FOLLOW THE STEPS BELOW TO MAKE SURE YOUR CAMERA IS INSTALLED CORRECTLY



Make sure your camera is powered off before connecting to the Brinno Command Center. Turn off your camera and plug the cable into your laptop or tablet and then open the Brinno Command Center.

## Brinno Command Center Step by Step



Open the Brinno Command Center on your computer.

\* The Online Brinno Command Center will check for the latest firmware from the server when your computer is connected to the internet.

\* The Offline Brinno Command Center is more stable when used offline(during operation under a non-internet environment.)

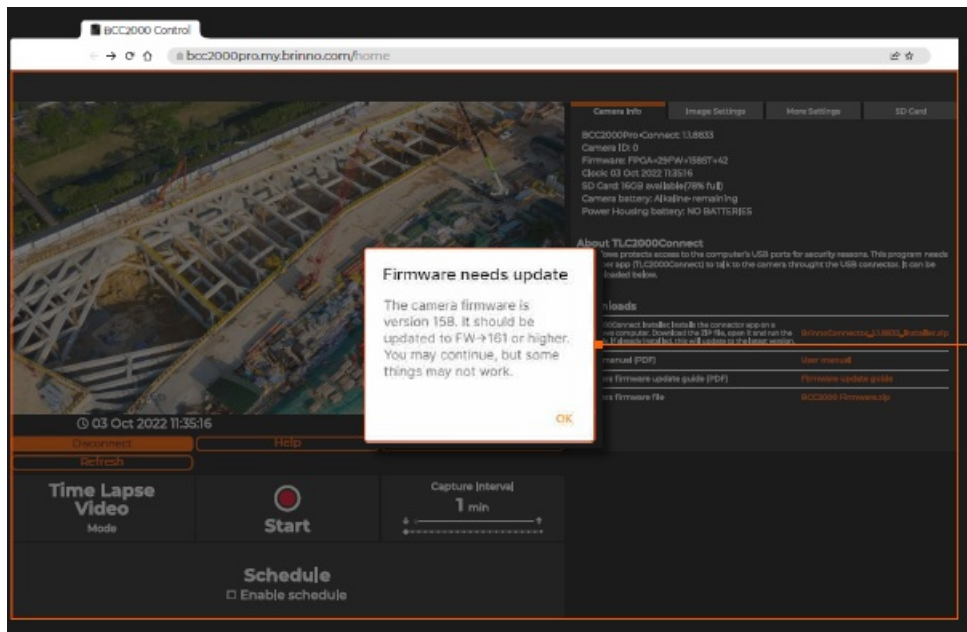


When the software starts, an operational window will pop-up followed by your web browser popping up with the Brinno Command Center page.

Minimize the operational window but do not close it otherwise you will disrupt the camera's connection.

Click "Connect" to complete the camera's connection.

Open the online Brinno Command Center and confirm the firmware version and feature updates.

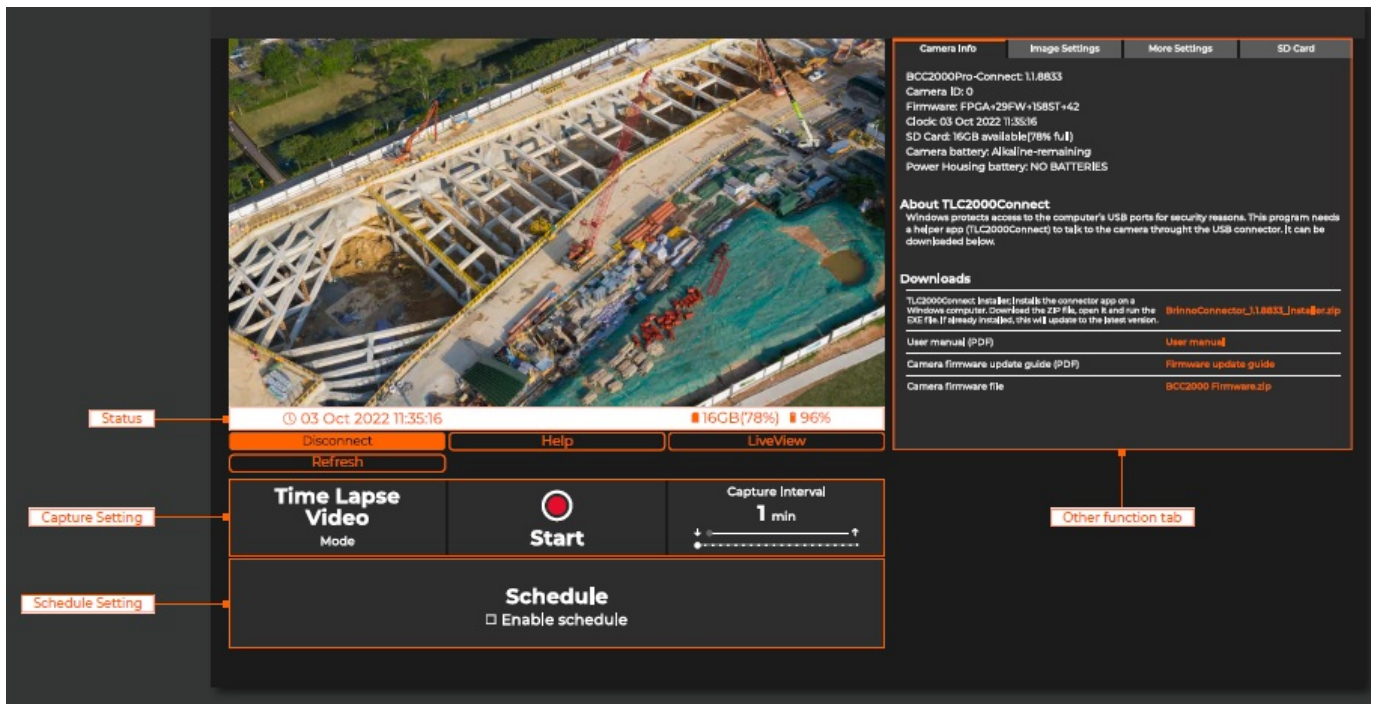


While using an Internet connection, the online Brinno Command Center will detect whether the camera's firmware is the latest version. If it's not, there will be a pop up notification to tell you to update your firmware. Go to the TLC2000/TLC2020 support page and download firmware in your desired language.



Open the online Brinno Command Center, minimize the operational window and close the web browser.

Open the offline Brinno Command Center and press "connect".



## Appendix & Support



BCC2000Plus Construction Time Lapse Bundle

<https://brinno.com/construction-camera/BCC2000Plus>

Brinno Command Center

<https://brinno.com/support/support-center/Command-Center>

“More” Brinno Construction Time Lapse Camera

<https://brinno.com/construction-camera>

For more Brinno information:

Official Website <https://www.brinno.com/>

YouTube Channel <https://www.youtube.com/user/Brinnolnc/Twitter> [https://twitter.com/Brinno\\_Global](https://twitter.com/Brinno_Global)

Facebook <https://www.facebook.com/Brinnolnc>









Instagram [https://www.instagram.com/brinno\\_global/](https://www.instagram.com/brinno_global/)

## Documents / Resources



[brinno Command Center](#) [pdf] Instructions  
Command Center

## References

-  [BCC2000 Control Board](#)
-  [BCC2000 Control Board](#)
-  [Brinno | The world leader in time lapse cameras](#)
-  [product - construction Bundles](#)
-  [Product - BCC2000 Plus](#)
-  [Support - Command Center](#)
-  [Brinno | The world leader in time lapse cameras](#)
-  [Brinno Time Lapse \(@brinno\\_global\) • Instagram photos and videos](#)

Manuals+.