



brinno BCC200-BLE Bluetooth Timelapse Camera Controller Bundle User Guide

[Home](#) » [brinno](#) » brinno BCC200-BLE Bluetooth Timelapse Camera Controller Bundle User Guide 

Contents

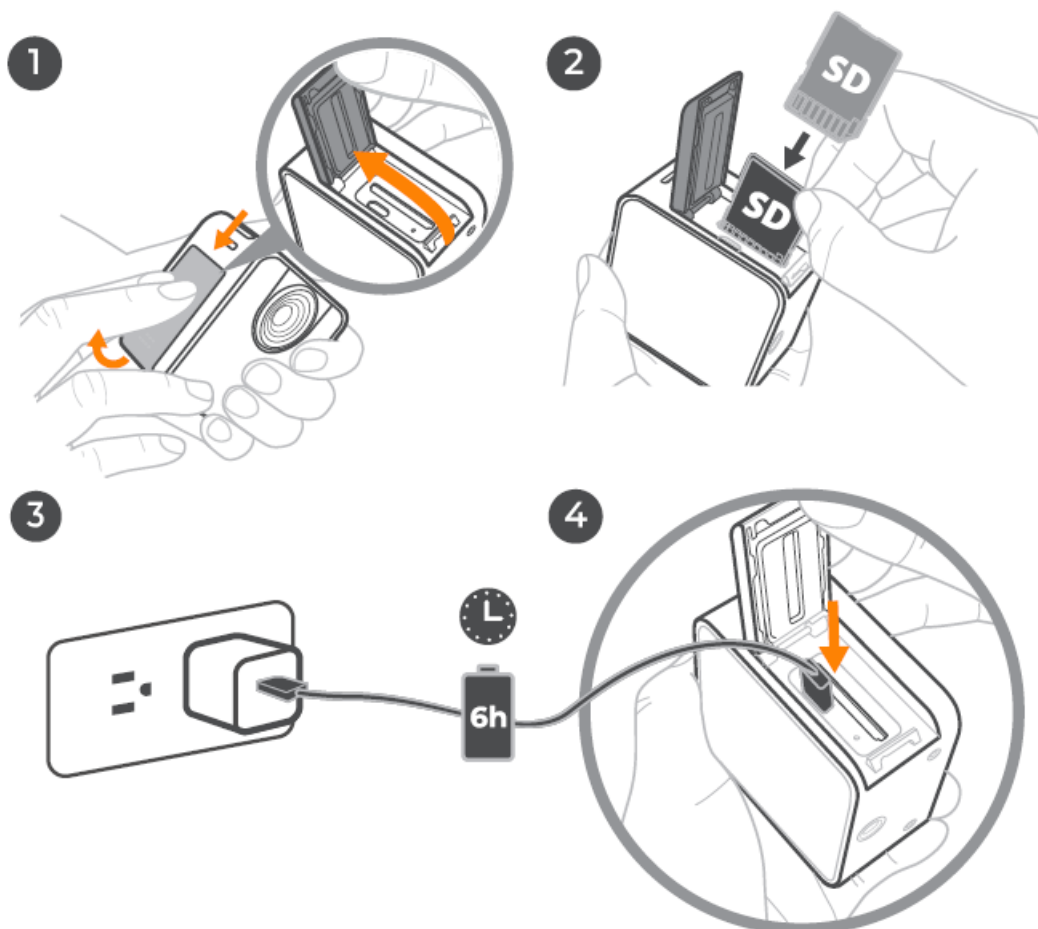
- [1 brinno BCC200-BLE Bluetooth Timelapse Camera Controller Bundle](#)
- [2 Operating Camera](#)
- [3 Operating BLE Controller](#)
- [4 FCC FEDERAL COMMUNICATIONS COMMISSION INTERFERENCE STATEMENT](#)
- [5 Documents / Resources](#)
 - [5.1 References](#)
- [6 Related Posts](#)



brinno BCC200-BLE Bluetooth Timelapse Camera Controller Bundle

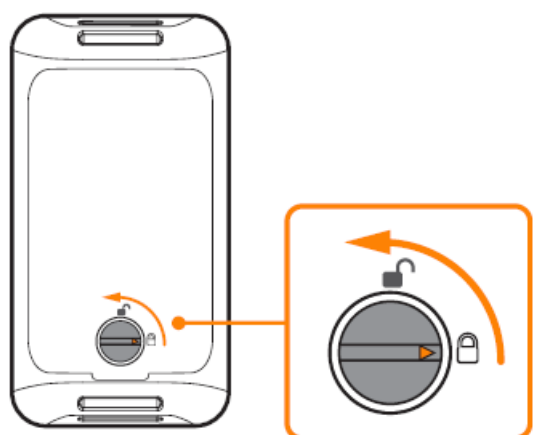


Operating Camera

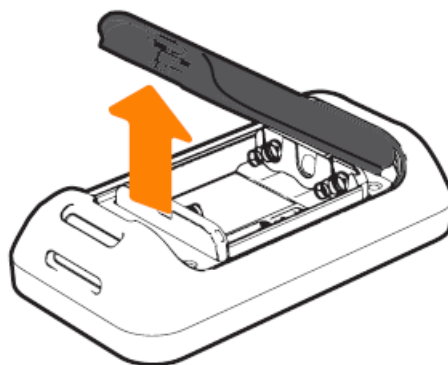


Operating BLE Controller

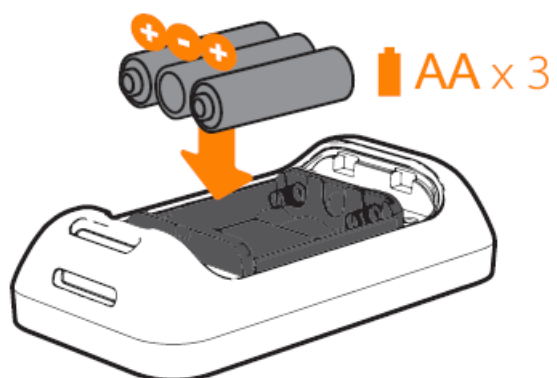
1



2

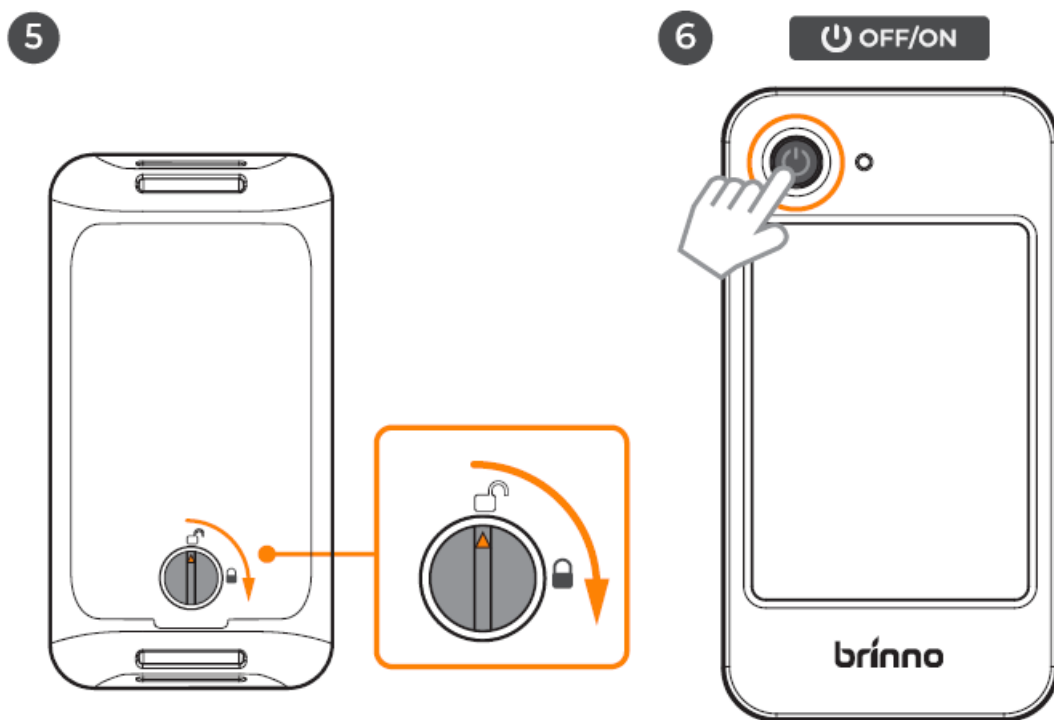


3



4





FCC FEDERAL COMMUNICATIONS COMMISSION INTERFERENCE STATEMENT

Note

- This equipment has been tested and found to comply with the limits for a Class B digital device, pursuant to Part 15 of the FCC Rules. These limits are designed to provide reasonable protection against harmful interference in a residential installation. This equipment generates, uses and can radiate radio frequency energy and, if not installed and used in accordance with the instructions, may cause harmful interference to radio communications. However, there is no guarantee that interference will not occur in a particular installation. If this equipment does cause harmful interference to radio or television reception, which can be determined by turning the equipment off and on, the user is encouraged to try to correct the interference by one or more of the following measures:
 - Reorient or relocate the receiving antenna.
 - Increase the separation between the equipment and receiver:
 - Connect the equipment into an outlet on a circuit different from that to which the receiver is connected.
 - Consult the dealer or an experienced radio/TV technician for help.

CAUTION:

- Any changes or modifications not expressly approved by the party responsible for compliance could void the user's authority to operate the equipment.
- This device complies with part 15 of the FCC Rules.

Operation is subject to the following two conditions:

1. This device may not cause harmful interference, and

2. This device must accept any interference received, including interference that may cause undesired operation.

FCC RF Radiation Exposure Statement

1. This Transmitter must not be co-located or operating in conjunction with any other antenna or transmitter.
2. This equipment complies with FCC RF radiation exposure limits set forth for an uncontrolled environment.

This equipment should be installed and operated with a minimum distance of 20 centimeters between the radiator and your body.

CAUTION

- RISK OF EXPLOSION IF BATTERY IS REPLACED BY AN INCORRECT TYPE.
- DISPOSE OF USED BATTERIES ACCORDING TO THE INSTRUCTIONS

Full Manual + Tutorials

<https://brinno.com/pages/support-bcc200-ble>

Register Online and get Extra Months warranty

<http://www.brinno.com/support/registration>



FAQs

<https://brinno.com/pages/faq-bcc#BCC200-BLE>

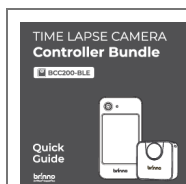
Time Lapse Calculator

https://www.brinno.com/support/time_setting_calculator



Contact customer service at: customersevice@brinno.com

Documents / Resources



[brinno BCC200-BLE Bluetooth Timelapse Camera Controller Bundle](#) [pdf] User Guide
BCC200-BLE Bluetooth Timelapse Camera Controller Bundle, BCC200-BLE, Bluetooth Timelapse Camera Controller Bundle, Timelapse Camera Controller Bundle, Camera Controller Bundle, Controller Bundle, Bundle

References

- [User Manual](#)