



## BRIMFORD Customized Mini Keyboard Instructions

[Home](#) » [BRIMFORD](#) » BRIMFORD Customized Mini Keyboard Instructions 

### BRIMFORD Customized Mini Keyboard Instructions



## Contents

[1 Product Specifications](#)

[2 Download software](#)

[3 Function Setting](#)

[4 Demonstration](#)

[5 Q&A](#)

[6 Q: How do I use the keypad after connecting it to the computer for the first time?](#)

[7 Q: How do I change the keypad settings after redefining them?](#)

[8 Q: What should I do if I get an error message when setting up functions?](#)

[9 Q: Why is my computer slow and unable to control the volume after setting up multimedia functions?](#)

[10 Q: Can I use the keypad on a Mac system?](#)

[11 Q: What if I can't open the setting software after downloading it?](#)

[11.1 Documents / Resources](#)

[11.1.1 References](#)

[11.2 Related Posts](#)

## Product Specifications

Keyboard Switch: Dustproof Red Switch

**Material:** PC

**Package:** Keyboard\*1, USB Cable\*1, User Manual 1

**Connection:** USB-C Cable

6 KEY+1 Knob



4 KEY



4 KEY+1 Knob



3 KEY



2 KEY



## Download software

**Method 1**, Scan the QR code, download and install the [Mini Keyboard] software;

**Method 1**, Visit the official website to download the [Mini Keyboard] software.

<https://sikaicase.com/blogs/news/before-software-setting>



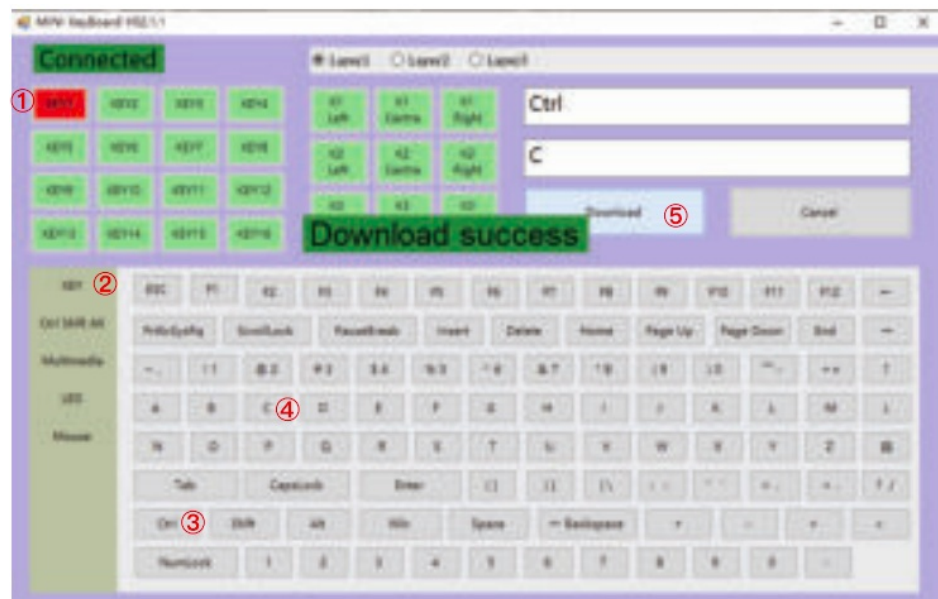
## Function Setting

1. Use the USB-C cable to connect the mini keyboard to PC, and open the [Mini Keyboard] customization software on PC. The software will automatically connect and display [Connected];
2. On the customization software, click any key KEY1-KEY16 or knob K1-K3 that you want to set, and you can set a single key or a combination key according to your own needs. (Max 5 characters)

\*If you need to use the keyboard on Mac, please use windows system for customization first.  
Command=Win, Option=Alt, Control=Ctrl

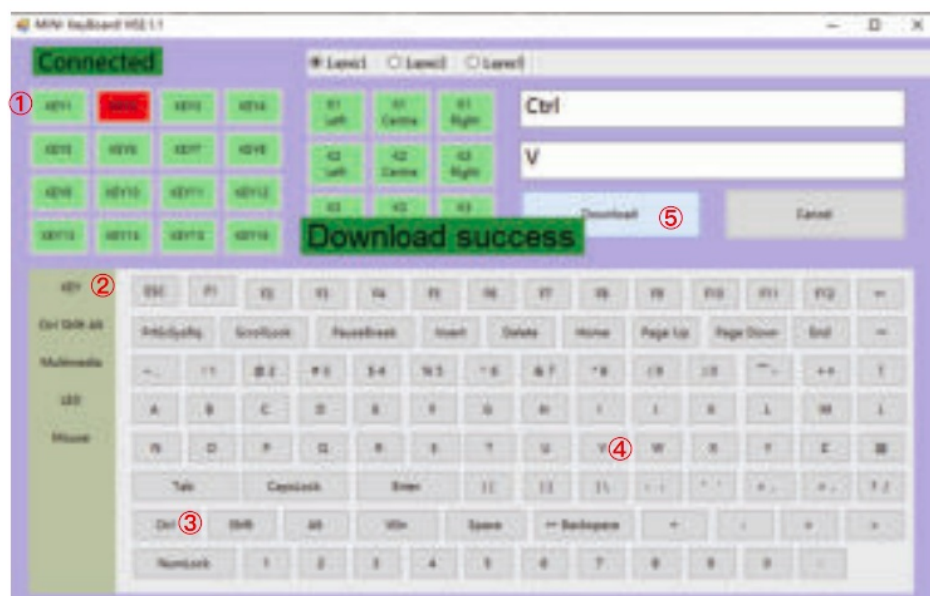
## Demonstration

For example 1, keyboard key 1 needs to be set to [CTRL] combination shortcut key: Key setting area click [KEY1]-



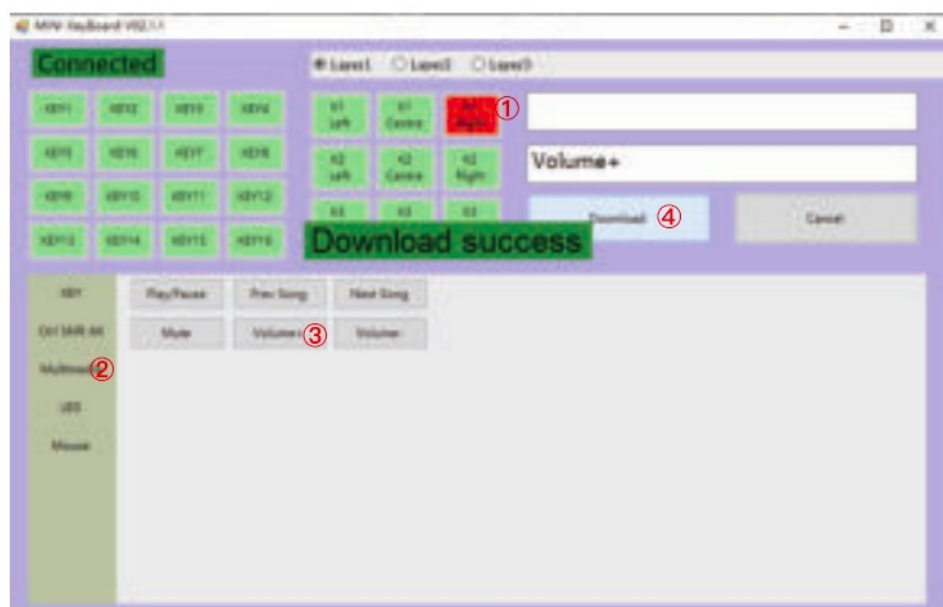
[Key]-[Ctrl][C][Download]

For example 2, keyboard key 2 needs to be set to [CTRL] combination shortcut key: Key setting area click [KEY2]-



[Key]-[Ctrl][V]- [Download]

For example 3, keyboard knob 1 turns right needs to be set to [Volume+] shortcut key: Knob setting area click [K1 Right]-[Multimedia] [Volume+] – [Download]



## Q&A

---

**Q: How do I use the keypad after connecting it to the computer for the first time?**

A: Wait for the USB driver to install automatically and then you can use it.

---

**Q: How do I change the keypad settings after redefining them?**

A: Just set up a new function and it will overwrite and save the previous one.

---

**Q: What should I do if I get an error message when setting up functions?**

A: Try a different USB port, close and reopen the setting software.

---

**Q: Why is my computer slow and unable to control the volume after setting up multimedia functions?**

A: Close the setting software after setting up.

---

**Q: Can I use the keypad on a Mac system?**

A: Yes, but you need to set it up on a Windows system first. Win=Command key, Alt Option key. For example, to copy on Mac, set Win+C on Windows.

---


**Q: What if I can't open the setting software after downloading it?**

A: Check if your antivirus software blocks it, and add it as a trusted file.

---

---

## Documents / Resources

	<a href="#">BRIMFORD Customized Mini Keyboard</a> [pdf] Instructions Customized Mini Keyboard, Customized, Mini Keyboard, Keyboard
---	---

## References

- [User Manual](#)

[Manuals+](#), [Privacy Policy](#)

This website is an independent publication and is neither affiliated with nor endorsed by any of the trademark owners. The "Bluetooth®" word mark and logos are registered trademarks owned by Bluetooth SIG, Inc. The "Wi-Fi®" word mark and logos are registered trademarks owned by the Wi-Fi Alliance. Any use of these marks on this website does not imply any affiliation with or endorsement.