



## Brilliant G99369 Besson Ceiling Light LED Grey 1-Light Source Instructions

[Home](#) » [brilliant](#) » Brilliant G99369 Besson Ceiling Light LED Grey 1-Light Source Instructions 

### Contents

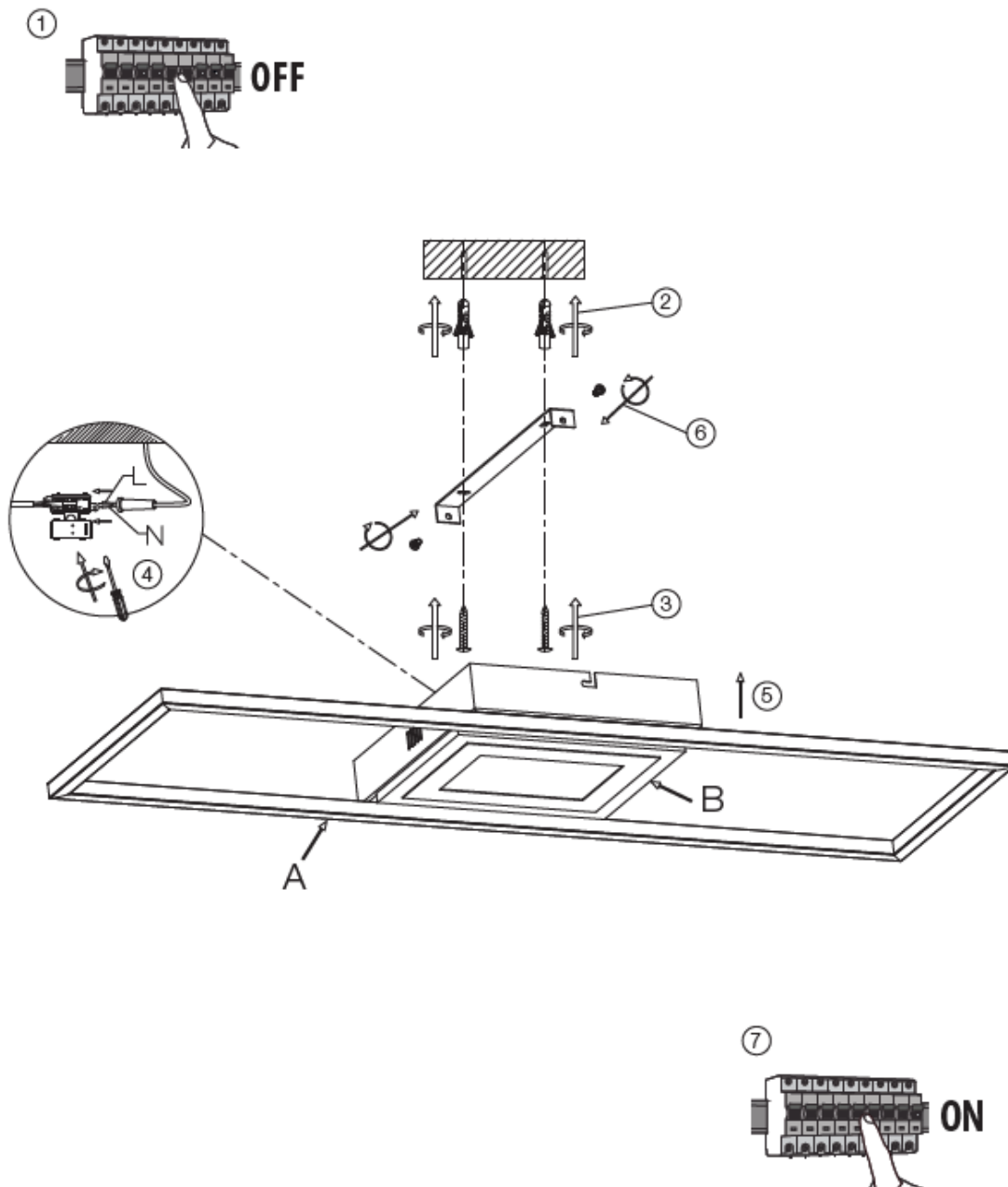
- [1 Brilliant G99369 Besson Ceiling Light LED Grey 1-Light Source](#)
- [2 STEP TO INSTALLATION](#)
- [3 3-step-switchable](#)
- [4 Documents / Resources](#)
- [5 Related Posts](#)

# Brilliant

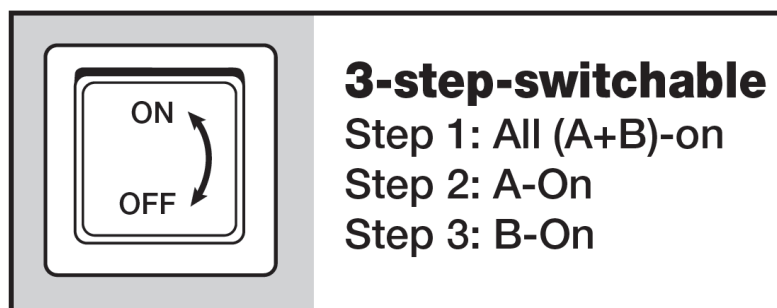
### Brilliant G99369 Besson Ceiling Light LED Grey 1-Light Source



### STEP TO INSTALLATION

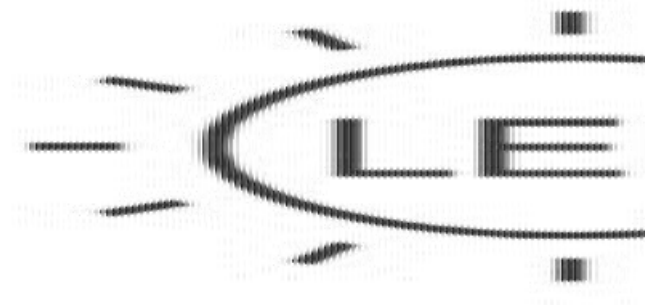


### 3-step-switchable

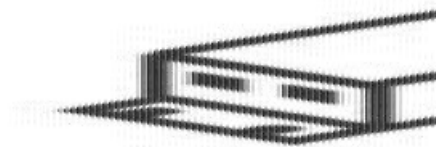


1. By switching the luminaire on and off in quick succession you are able to choose between 3 types of lighting.
2. Select the desired type of lighting (Step 1, Step 2 or Step 3) and wait at least 12 seconds for the setting to be saved.
3. The next time the luminaire is switched on it will shine in the saved brightness level.

**This product includes a light of the energy efficiency class E.**



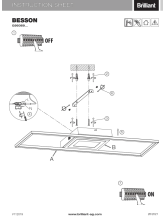
**he light should be replaced by a qualified person.**



**The separate control gear should be replaced by a qualified person.**

Caution, risk of electric shock! Danger, [www.brilliant-ag.com](http://www.brilliant-ag.com)

**Documents / Resources**

	<p><a href="#">Brilliant G99369 Besson Ceiling Light LED Grey 1-Light Source</a> [pdf] Instructions G99369, Besson Ceiling Light LED Grey 1-Light Source</p>
---	--