



## BRILLIANCE BRI WiFi Smart Socket 2 User Manual

[Home](#) » [BRILLIANCE](#) » BRILLIANCE BRI WiFi Smart Socket 2 User Manual 

### Contents

- [1 BRILLIANCE BRI WiFi Smart Socket](#)
- [2 Operating Instructions](#)
- [3 FCC](#)
- [4 Documents / Resources](#)
- [5 Related Posts](#)

# BRILLIANCE

### BRILLIANCE BRI WiFi Smart Socket



### Product Description:

The Brilliance WiFi Smart Socket is designed specifically for your landscape lighting transformer and provides remote control of your entire lighting system. Supported on operating systems Android 4.1 or IOS6.0 or newer.

- Power Rating: 100-240VAC 10A
- AC Frequency: 50/60Hz
- Operating temperature: -10°C~+40°C
- Wi-Fi Standard: WI-Fi 2.4GHz b/g/n
- App Support: Android 4.1 and IOS8.0 or higher

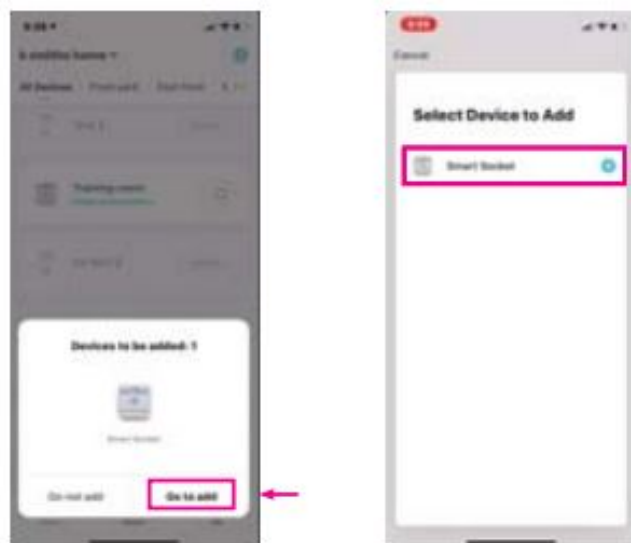
**Download APP:**

OR search "Brilliance Smart" in the App store.



**Operating Instructions**

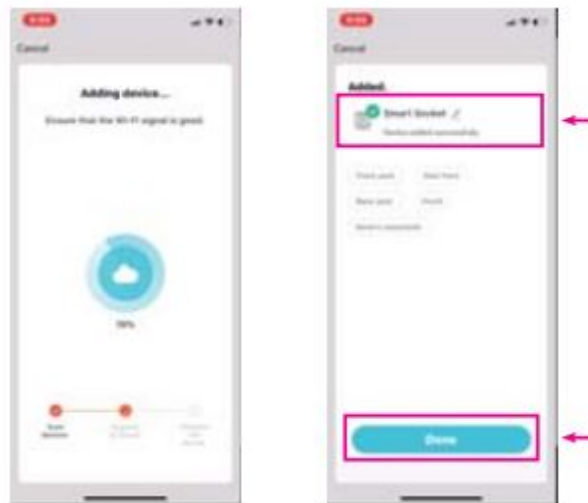
1. Download "Brilliance Smart" from Apple App Store or Google Play. Register aero.mt if first time user.
2. Connect to the transformer, hold the power button down for 5 seconds, the light will start to blink rapidly.
3. Open the app.
  - When the device is found via Bluetooth, tap Go To Add, then select Smart Socket
  - To add via WiFi, connect the Smart Socket and your phone to the same 2.4GHz WiFi router. Tap the plus(+) at the upper-right corner and select Smart Socket



4. Enter your correct 2.4 GHz Wifi information and tap Next



5. Once added, tap the pencil button to rename the device and press Done.



## FCC

### FCC WARNING.

Warning: Changes or modifications to this unit not expressly approved by the party responsible for compliance could void the user's authority to operate the equipment

### FCC STATEMENT

Note: This equipment has been tested and found to comply with the limits for a Class B digital device, pursuant to part 15 of the FCC Rules. These limits are designed to provide reasonable protection against harmful interference in a residential installation. This equipment generates, uses and can radiate radio frequency energy and, if not installed and used in accordance with the instructions, may cause harmful interference to radio communications. However, there is no guarantee that interference will not occur in a particular installation. If this equipment does cause harmful interference to radio or television reception, which can be determined by turning the equipment off and on, the user is encouraged to try to correct the interference by one or more of the following measures:

- Reorient or relocate the receiving antenna.
- Increase the separation between the equipment and receiver.
- Connect the equipment into an outlet on a circuit different from that to which the receiver is connected.
- Consult the dealer or an experienced radio/TV technician for help.

This equipment should be installed and operated with a minimum distance of 20 centimeters between the radiator and your body.

Documents / Resources

	<a href="#">BRILLIANCE BRI WiFi Smart Socket 2</a> [pdf] User Manual SOCKET2, 2AWS5SOCKET2, BRI WiFi Smart Socket 2
---	--

Manuals+.