



## **Contents** [ [hide](#) ]

- [1 bridgelux Driver Configuration Software](#)
- [2 Introduction](#)
- [3 Operating System Requirements](#)
- [4 Software Function](#)
- [5 User](#)
- [6 Annex A](#)
- [7 Frequently Asked Questions](#)
- [8 Documents / Resources](#)
  - [8.1 References](#)



## **bridgelux Driver Configuration Software**

**Bridgelux Driver Configuration**

User Port Config Read Write Load File Export File Loop Write Firmware Update About

**Parameter**

**Only Read Driver Information**

Max Output Power: 46 W  
 Max Load Voltage: 50 V  
 Min Load Voltage: 19 V  
 Max Setting Current: 1400 mA  
 Min Setting Current: 140 mA  
 Output Channel: 2

**CCT Information**

Physical Warmest: 2700 K  
 Physical Coolest: 6500 K  
 Logical Warmest: 2700 K  
 Logical Coolest: 6500 K

**Current Information**

Warm Current: 1400 mA  
 Cool Current: 1400 mA

**Device Information**

Min Dimming Ratio: 1%  
 Dimming To Off: Enable  
 Dimming Mode: Tunable White  
 Dimming Curve: Linear  
 Solo Dimming CCT: 4000 K

**Device Information**

Intensity Fade Time: 250 ms  
 CCT Fade Time: 250 ms

COM3 Active FW Version: 03.03 Read All Parameters Success

## Introduction

### 1. Software Introduction

Bridgelux Vesta Fusion and Pallas-A drivers can be programmed through “Bridgelux Driver Configuration”. It allows users to configure the output current, minimum dimming ratio, dimming-to-off mode, and dimming voltage (Vesta Fusion also includes controls of dimming curve, dimming mode, fade time, CCT value, etc.)

## Operating System Requirements

- Operating System: Windows 7 Service Pack 1 or higher
- Software Environment: .NET Framework 4.8 Programming
- Tool: Bridgelux Driver Configuration V3.0.240515.zip

### Note:

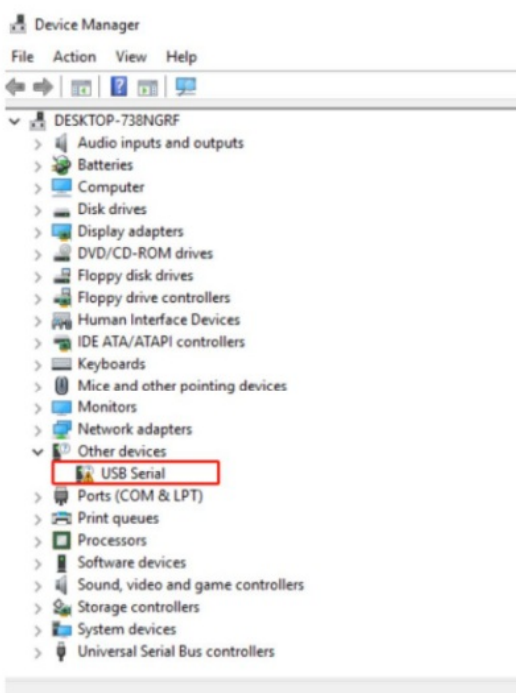
1. NET Framework 4.8 must be installed. Download link:

<https://dotnet.microsoft.com/download>

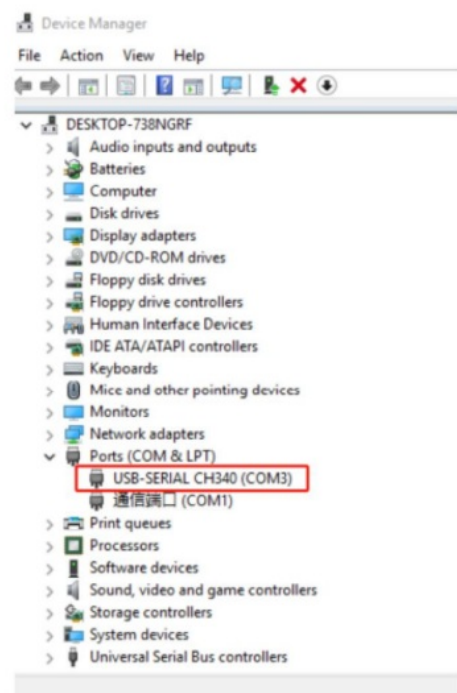
2. If your computer cannot automatically install the required driver program, please search for “CH340E Driver” on the internet to download and install the driver.

If your computer cannot automatically install the required tool driver, please click on the link below to download the driver and manual installation:

<https://www.wch.cn/downloads/file/65.html?time=2023-03-17%2016:47:34&code=DZOI4uB6P0dEfCxL0bp5AGLyOaggJMAb025ICJEt?time=2023-10-17%2011:00:38&code=lc43aw5DHnM7D4DwNJcfowsWUTSrDyl8XoYGGj7O>



Driver not installed



Driver installation complete

## Software installation and startup



Name	Type
dll	File folder
Excel	File folder
Bridgelux Driver Configuration.exe	Application
Bridgelux Driver Configuration.exe.config	CONFIG File

“Bridgelux Driver Configuration” folder is free-install software. Just unzip the “Bridgelux

Driver Configuration V3.0.240515.zip” to your local drive, and then, double click “Bridgelux Driver Configuration.exe” to start the software.

## Programmer Hardware Wring Connection (depends on driver)

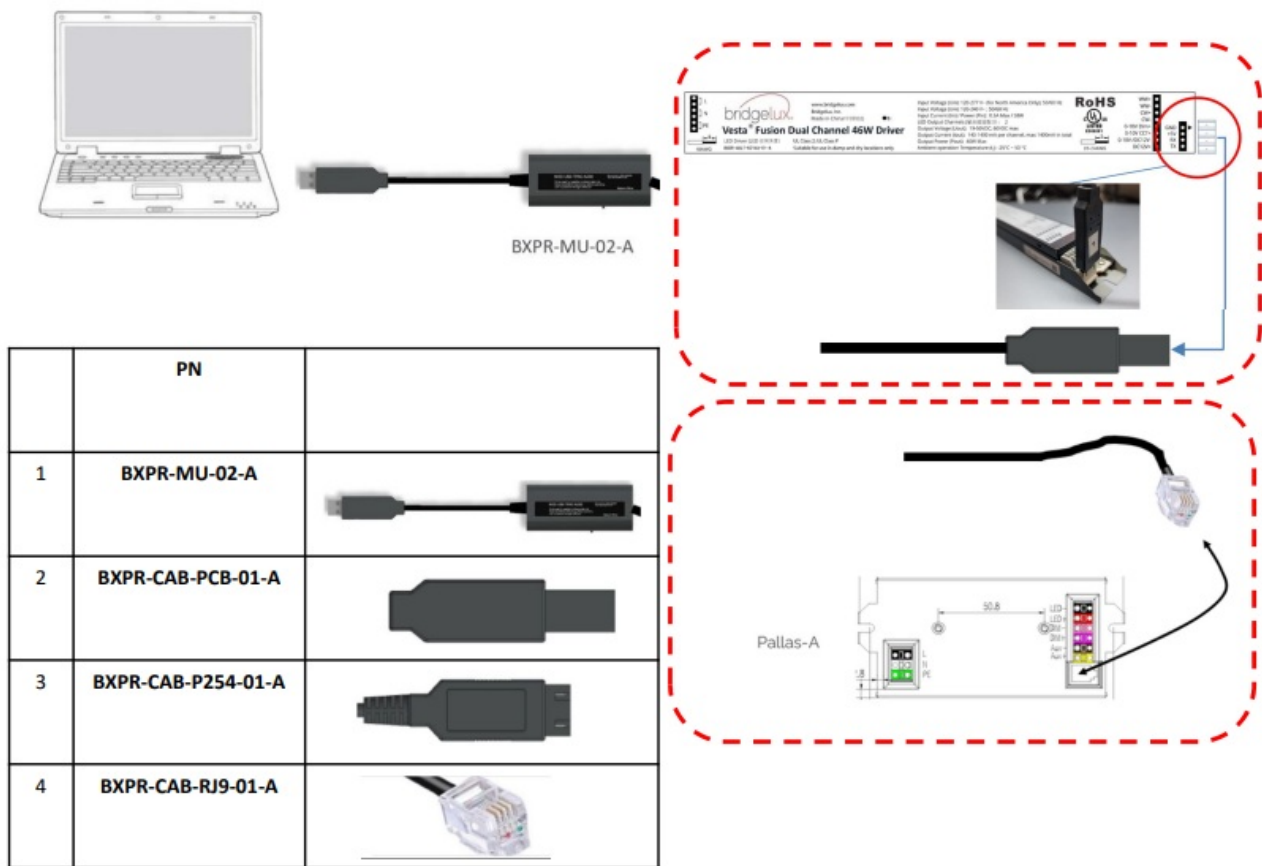


Figure 2 Pallas-A Driver Programmer

## Software Function

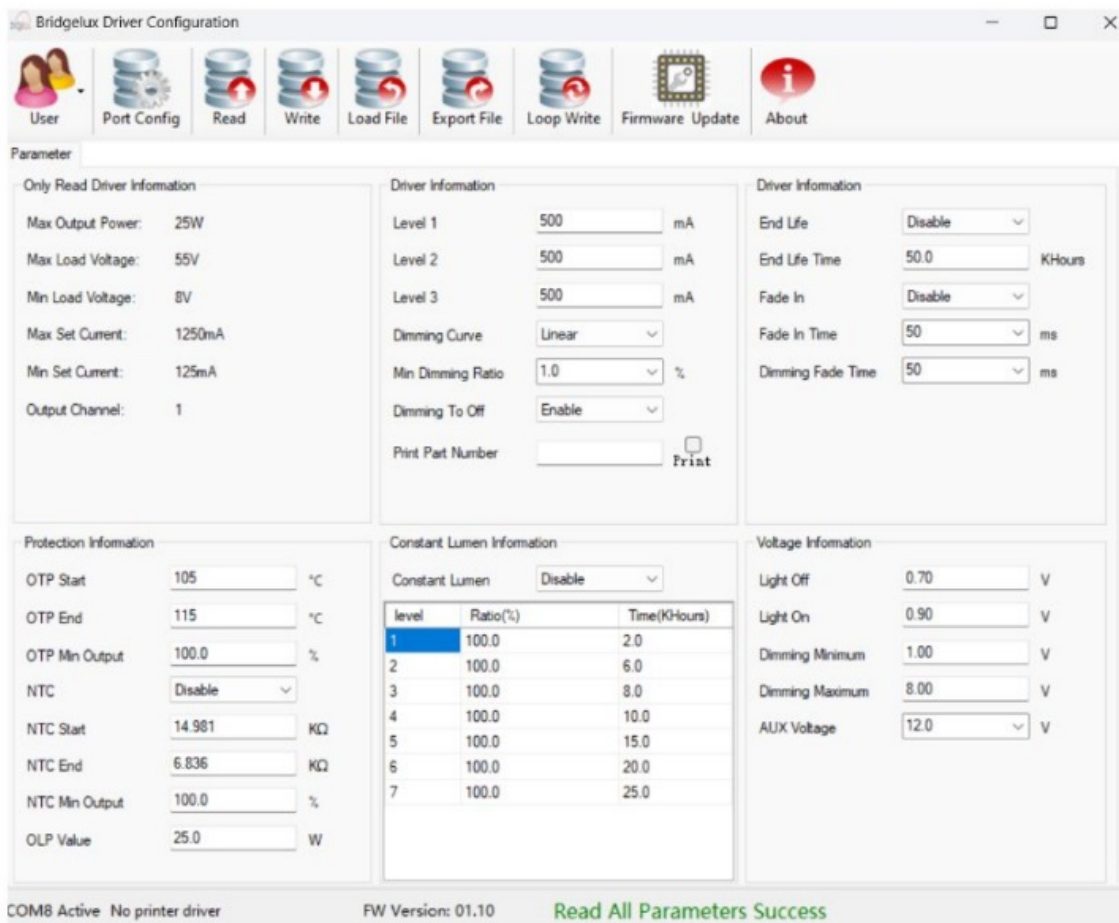


Figure 3

## Bridgelux Driver Configuration Software UI includes:

- Title bar: Displays the software name.
- Operating area: All operation buttons, including user menu, serial port configuration, read parameter, write parameter, load parameter file, export parameter file, loop write parameter, firmware upgrade, about software.
- Parameter display area: Displays and edits parameter information.
- Status bar: Displays serial port, firmware version, operation prompt information

## User

### User login

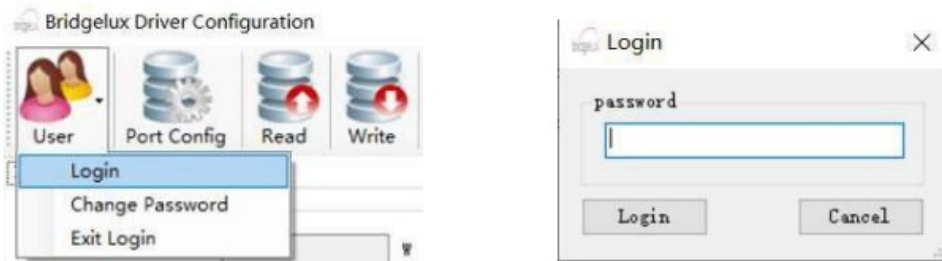


Figure 4

1. Click User -> login.
  2. Input "password" and then click "login".
- Note: Default password "adp12346".

### Change password

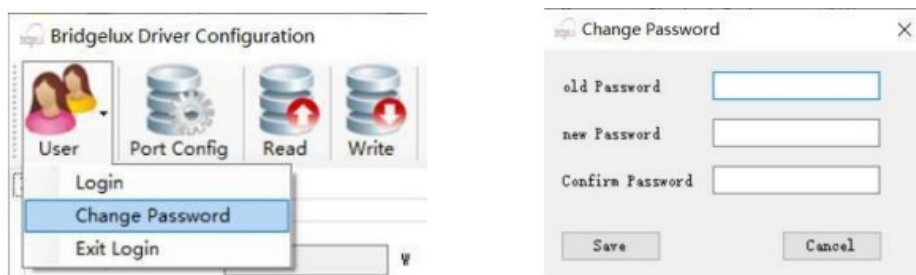


Figure 5

1. Click User->Change Password.
2. Input old password, new password and confirm password then click "Save".

### Exit Login



Figure 6

Click User-> Exit login, Exits the engineer permission.

### Port Configuration

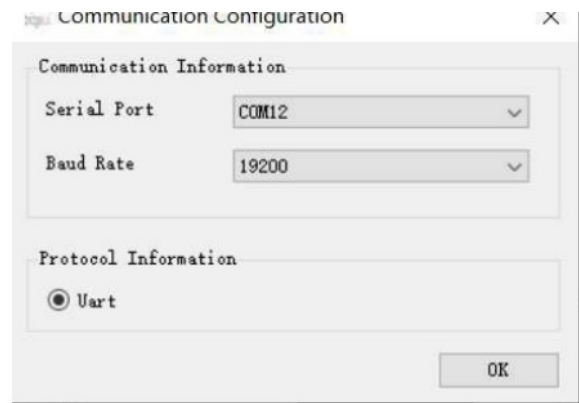


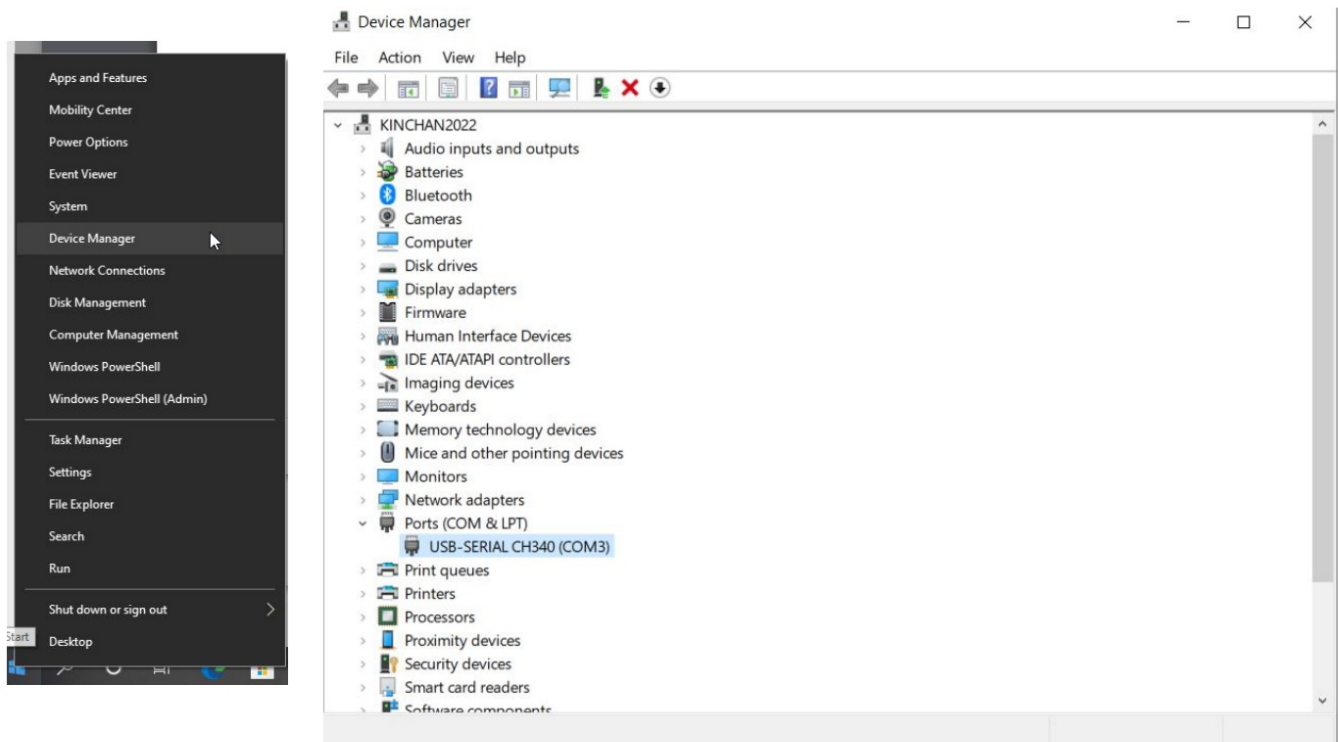
Figure 7

1. Click “Port Config”.
2. Select programmer serial port, baud rate 19200 and then click “OK”.

After plug the Bridgelux programming cable to one of the USB port on your PC. We have to find out which COM port has been assigned to this programming cable

1. Right click on “Windows” icon (at the bottom left corner)
2. click on “Device Manager”
3. From the pop-up window, scroll down to “Ports (COM & LPT)”, you should find the “USB-SERIAL CH340 (COM X). Write down the COM port number as you will need it when you use the Bridgelux Configuration APP in next step.
  - For example, this PC assigned the USB-SERIAL CH340 to COM 3 (your PC may assign different COM port for your case)





## Read Write Parameters

### a Vesta Fusion (Dual Channel Driver)



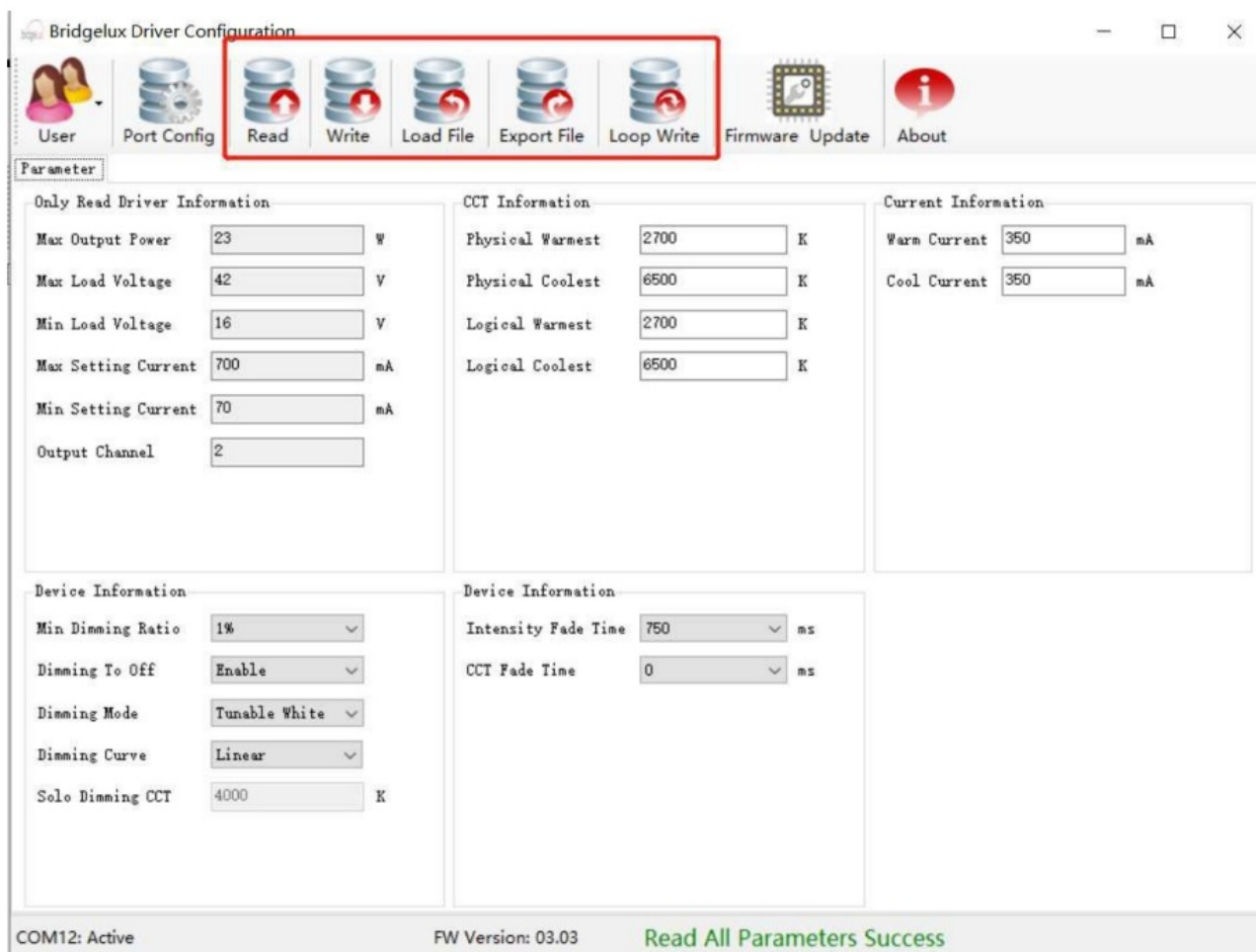


Figure 8

1. Click Read button. Read all parameters.
2. Click Write button. Write all parameters to driver.
3. Click Export File button. Export all parameter to file.
4. Click Load File button. Load external parameter file.
5. Click Loop Write button. Write all parameters to driver every 2.5s

Only Read Driver Information	
Max Output Power	Maximum output power of the driver
Max Load Voltage	Maximum load voltage of the driver
Min Load Voltage	Minimum load voltage of the driver
Max Setting Current	Maximum settable current of the driver
Min Setting Current	Minimum settable current of the driver

Output Channel	Number of drive output channels
CCT Information	
Physical Warmest	Configuration physical warmest and coolest color temperature range.  The valid range 1500K-7000K, and the color temperature should be the same as that of the lamp.
Physical Coolest	
Logical Warmest	Configuration logical warmest and coolest color temperature range.  The logical color temperature range should be within the physical color temperature range.
Logical Coolest	
Current Information	
Warm Current	output current of Warm color channel.
Cool Current	output current of Cool color channel.
Device Information	
Min Dimming Ratio	Minimum dimming ratio, 1% 5% 10% is optional.
Dimming To Off	Enable or disable dimming to OFF

Dimming Mode	<p>Configuration Dimming Mode.</p> <p>Solo dimming: use “0-10V Dim+” voltage control the intensity of both channels simultaneously.</p> <p>Warm dimming: use “0-10V Dim+” voltage control both intensity and color temperature simultaneously.</p> <p>Tunable white: use “0-10V Dim+” voltage control intensity and “0-10V CCT+” voltage control color temperature.</p>
Dimming Curve	dimming curve, “logarithmic”, “linear”, “square” is optional
Solo Dimming CCT	CCT when the dimming mode is at Solo Dimming
Intensity Fade Time	<p>Configuration fade time of intensity changing, the fade time of the driver intensity from A to B.</p> <p>0ms,250ms,500ms,750ms,1000ms,1250ms,1500ms is optional.</p>
CCT Fade Time	<p>Configuration fade time of CCT changing, the fade time of the driver CCT from A to B.</p> <p>0ms, 250ms, 500ms, 750ms, 1000ms, 1250ms, 1500ms is optional.</p>

Read Write Parameters

## **b Pallas-A (Single Channel Driver)**

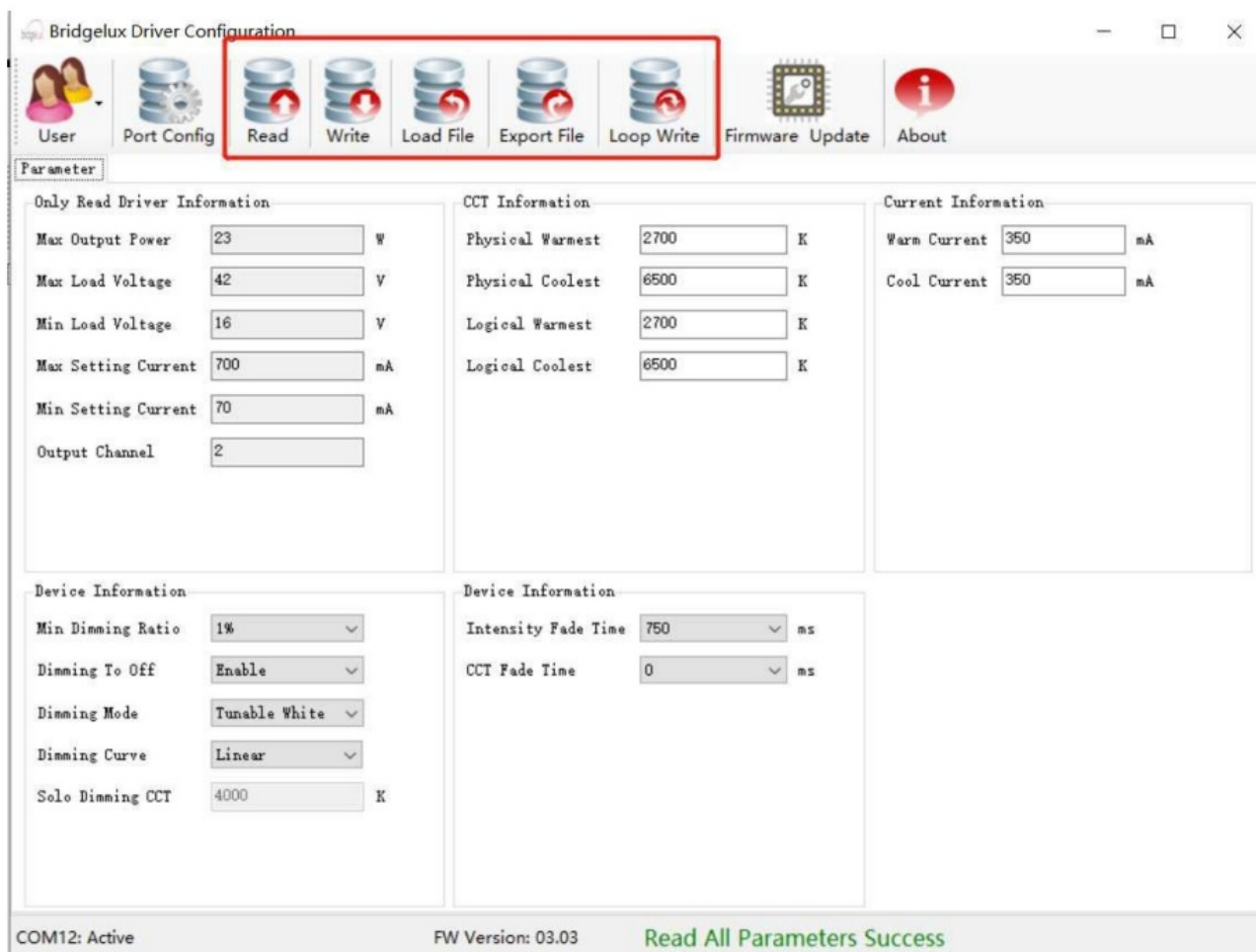


Figure 8

1. Click Read button. Read all parameters.
2. Click Write button. Write all parameters to driver.
3. Click Export File button. Export all parameter to file.
4. Click Load File button. Load external parameter file.
5. Click Loop Write button. Write all parameters to driver every 2.5s

Only Read Driver Information	
Max Output Power	Maximum output power of the driver
Max Load Voltage	Maximum load voltage of the driver
Min Load Voltage	Minimum load voltage of the driver
Max Setting Current	Maximum settable current of the driver
Min Setting Current	Minimum settable current of the driver

Output Channel	Number of drive output channels
<b>Current Information</b>	
Level 1 – Level 2	Reserved for Bridgelux R&D use only
Level 3	output current setting
<b>Device Information</b>	
Min Dimming Ratio	Minimum dimming ratio, 1% 5% 10% is optional.
Dimming To Off	Enable or disable dimming to OFF
<b>Dimming Voltage Information</b>	
Light off	Configuration dimming off voltage.
Light on	Configuration dimming on voltage.
Dimming Minimum	Configuration dimming minimum voltage.
Dimming Maximum	Configuration dimming maximum voltage.
AUX Voltage	12 / 24V

## Firmware Upgrade

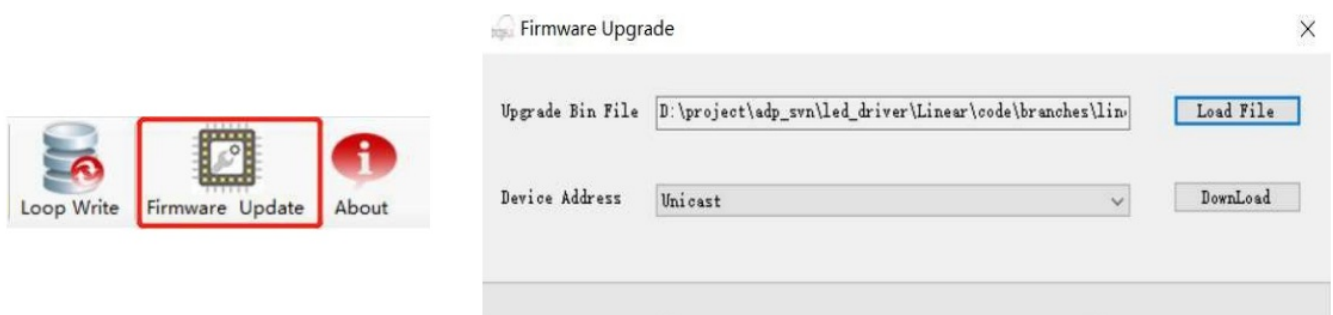


Figure 10

1. Click Firmware Update button, open firmware upgrade UI.
2. Click Load File button on the firmware upgrade UI, Load Upgrade Bin File.

3. Select device address “Unicast” or “broadcast” and then click download button.

Note: Firmware upgrade is not supported, and will be extended in the future.

## About



Figure 11

Click About button, open software information UI. see figure 11

## Annex A

### Modification record

Version	Description	Note
V1.0	Bridgelux Driver Configuration Software User Manual Initial Version	
V2.0	Added Single Channel Driver programming info	
V3.0	Minor revision	
V4.0	Minor revision	
V5.0	Revised programming cable physical description	





## References

- [User Manual](#)

📁 Bridgelux V5.0

💎 Bridgelux, Driver Configuration Software, Software,

---

## Leave a comment

Your email address will not be published. Required fields are marked \*

Comment \*

Name

Email

Website

☐ Save my name, email, and website in this browser for the next time I comment.

**Post Comment**

**Search:**

e.g. whirlpool wrf535swhz

**Search**

Manuals+ | Upload | Deep Search | Privacy Policy | @manuals.plus | YouTube

This website is an independent publication and is neither affiliated with nor endorsed by any of the trademark owners. The "Bluetooth®" word mark and logos

are registered trademarks owned by Bluetooth SIG, Inc. The "Wi-Fi®" word mark and logos are registered trademarks owned by the Wi-Fi Alliance. Any use of these marks on this website does not imply any affiliation with or endorsement.