

# Bridgelux 2022 Driver Configuration Software User Manual

[Home](#) » [Bridgelux](#) » Bridgelux 2022 Driver Configuration Software User Manual 



## 2022 Driver Configuration Software User Manual

### Contents

- [1 Introduction](#)
- [2 Software Function](#)
- [3 Annex A](#)
- [4 Documents / Resources](#)
  - [4.1 References](#)
- [5 Related Posts](#)

## Introduction

### 1.1 Software Introduction

Bridgelux Vesta Fusion and Pallas-A drivers can be programmed through “Bridgelux Driver Configuration”. It allows users to configure the output current, minimum dimming ratio, dimming-to-off mode, and dimming voltage (Vesta Fusion also includes controls of dimming curve, dimming mode, fade time, CCT value, etc.)

### 1.2 Operating System Requirements

Operating System: Windows 7 Service Pack 1 or higher  
Software Environment: .NET Framework 4.8  
Programming Tool: Bridgelux Driver Configuration V2.0.220218.zip

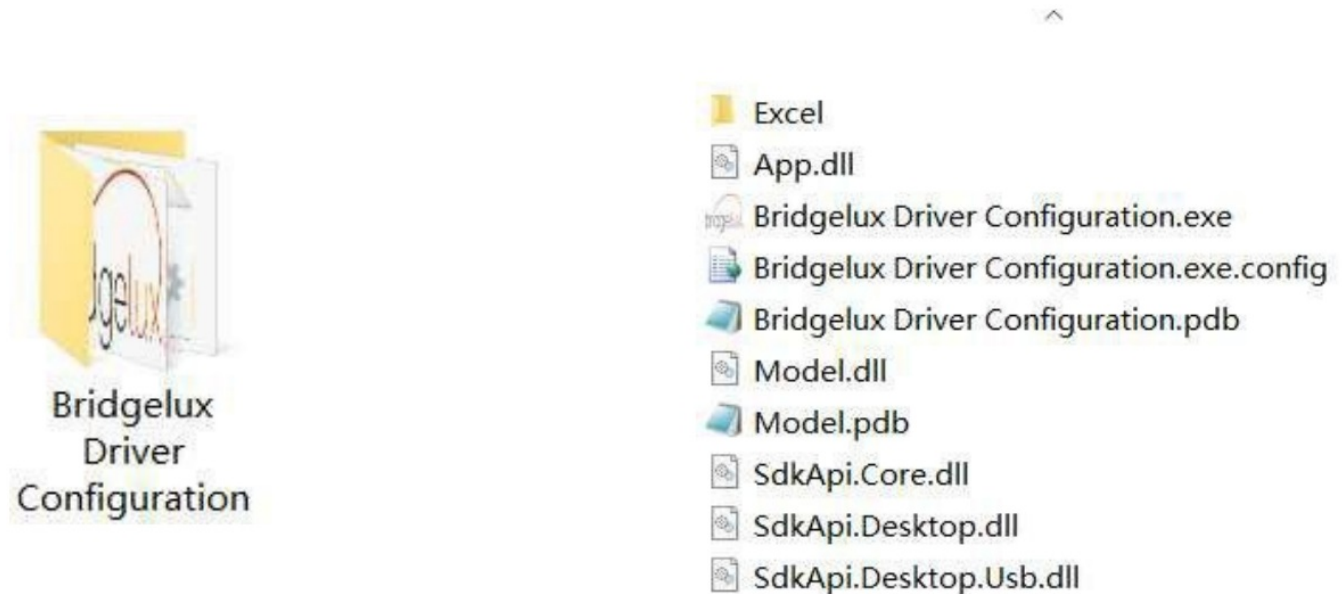
**Note:**

1. .NET Framework 4.8 must be installed.

Download link: <https://dotnet.microsoft.com/download>

2. If your computer cannot automatically install the required driver program, please search for “CH340E Driver” on the internet to download and install the driver.

### 1.3 Software installation and startup



“Bridgelux Driver Configuration” folder is free-install software.

Just unzip the “Bridgelux Driver Configuration V2.0.220218.zip” to your local drive, and then, double click “Bridgelux Driver Configuration.exe” to start the software.

### 1.4 Programmer Hardware Wring Connection

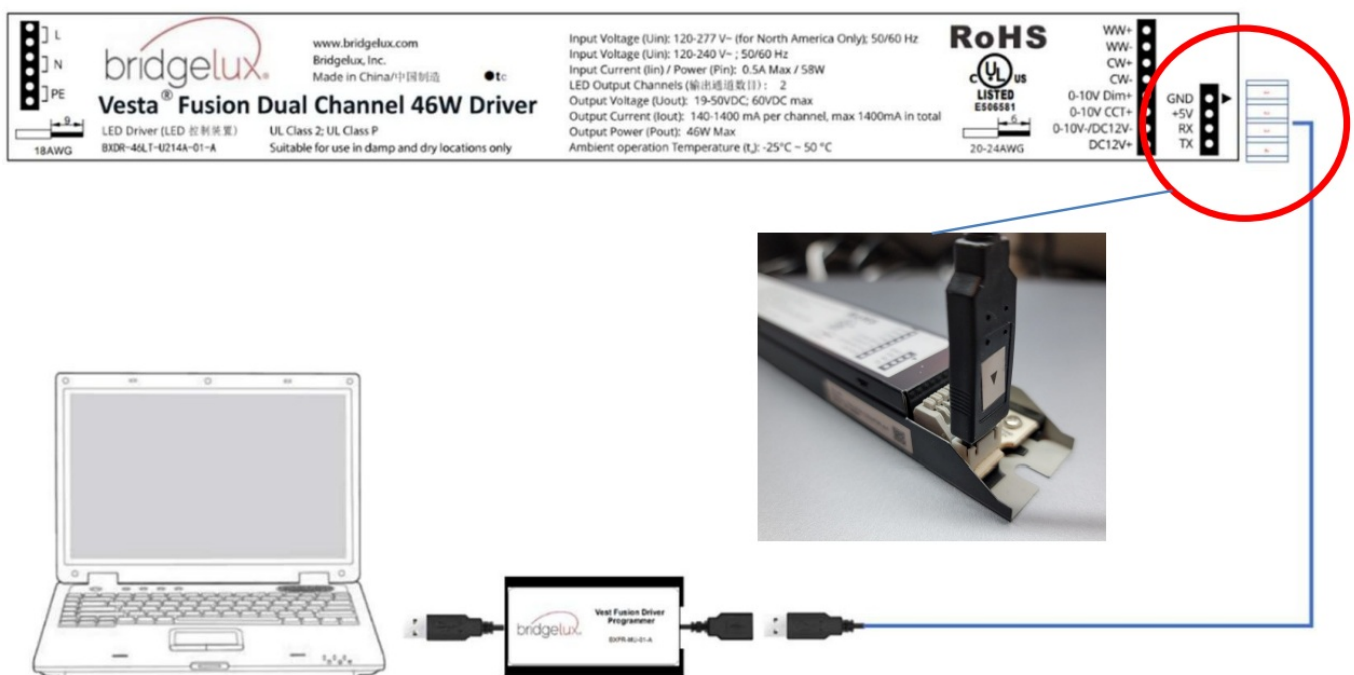


Figure 1 Programming connection diagram and connector orientation



Figure 2 Vest Fusion Driver Programmer

The USB male connector of Vest Fusion Driver Programmer is connected to the computer, the USB female connector is connected to the USB male to 2.54mm cable, and the 2.54mm terminal is connected to the driver. see figure 1.

## Software Function

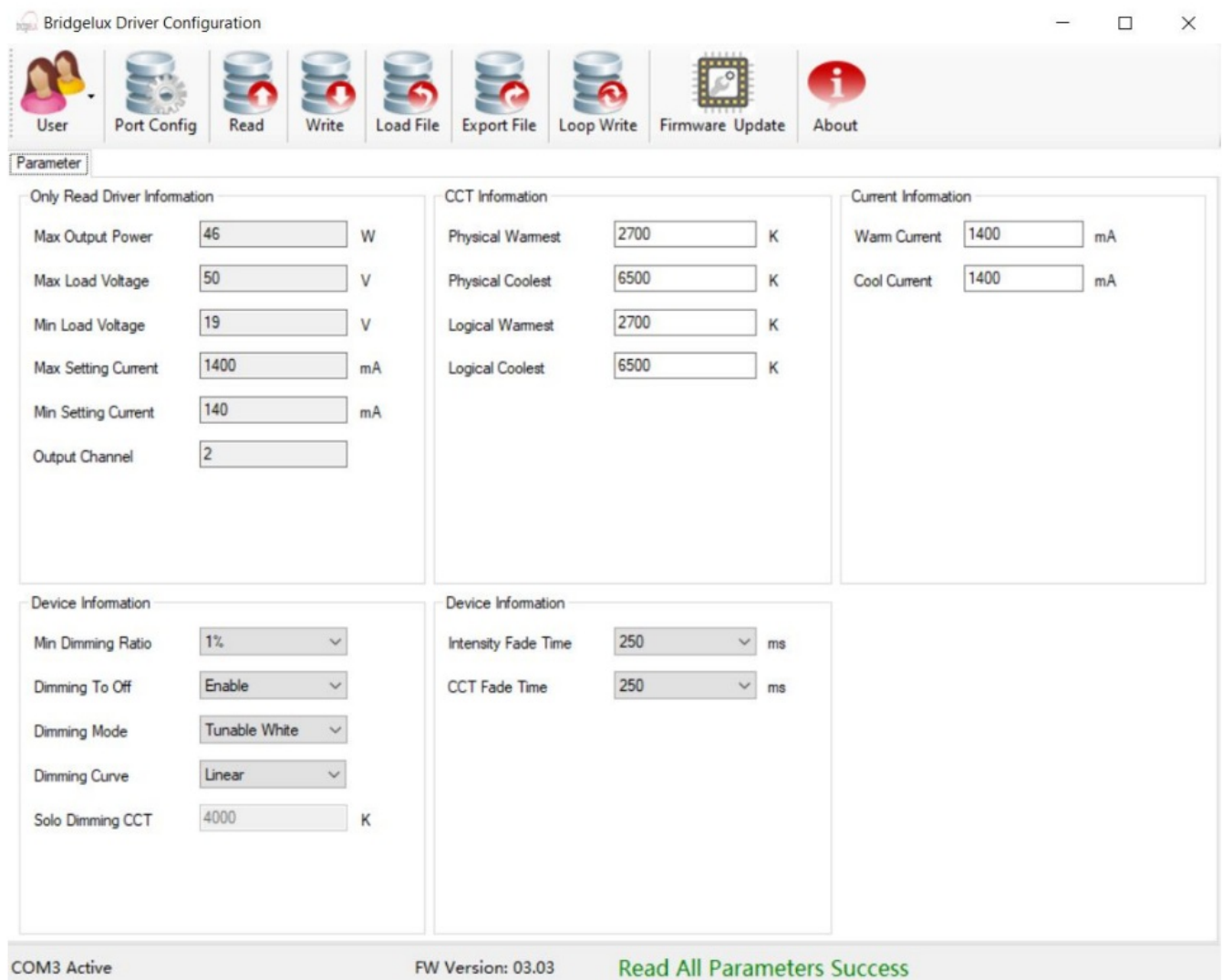


Figure 3

Bridgelux Driver Configuration Software UI include:

Title bar: Displays the software name.

Operating area: All operation buttons, including user menu, serial port configuration, read parameter, write parameter, load parameter file, export parameter file, loop write parameter, firmware upgrade, and about software.

Parameter display area: Displays and edits parameter information.

Status bar: Displays serial port, firmware version, operation prompt information.

## 2.1 User

### 1. User login

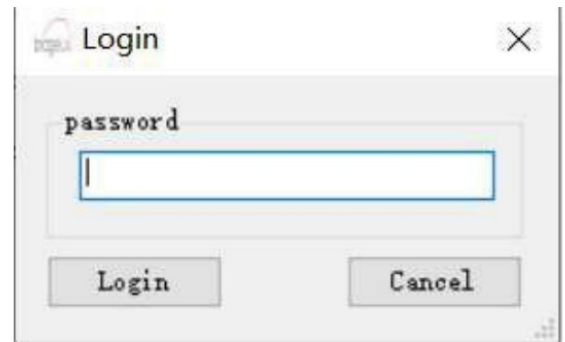


Figure 4

1. Click User -> login.
2. Input "password" and then click "login".

Note: Default password "adp12346".

### 2.1.2 Change password

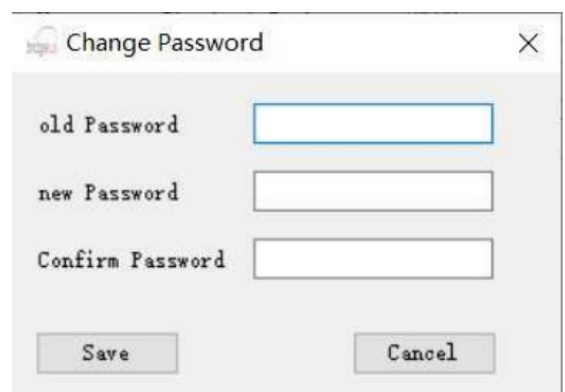
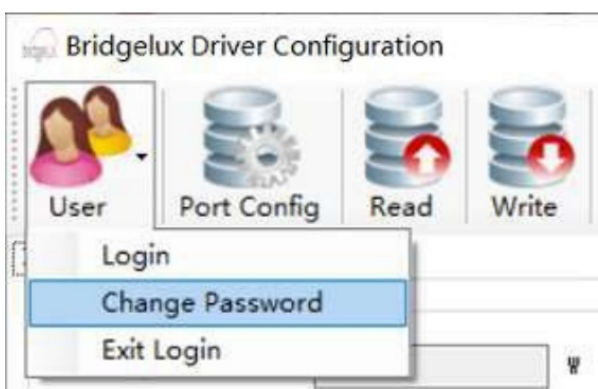


Figure 5

1. Click User->Change Password.
2. Input the old password, and the new password, confirm the password then click "Save".

### 2.1.3 Exit Login

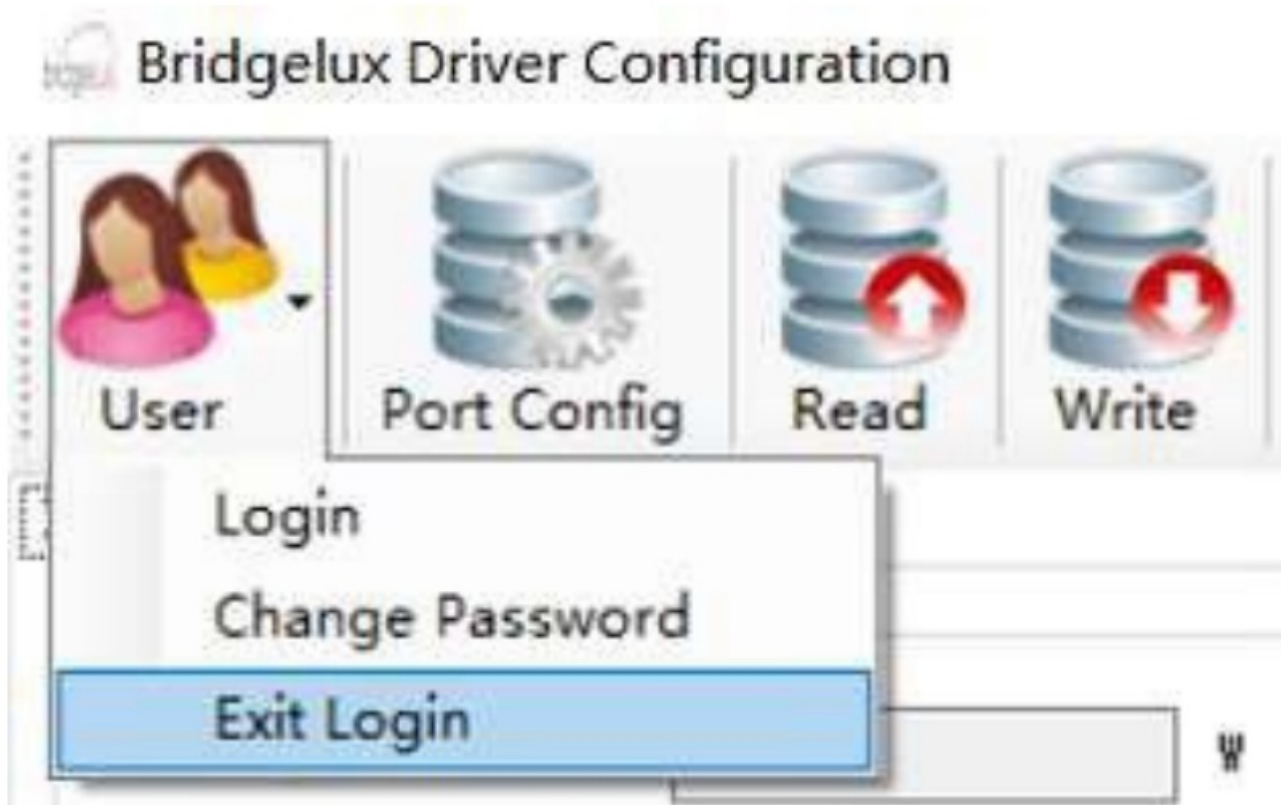


Figure 6

Click User-> Exit login, Exits the engineer permission.

## 2.2 Port Configuration

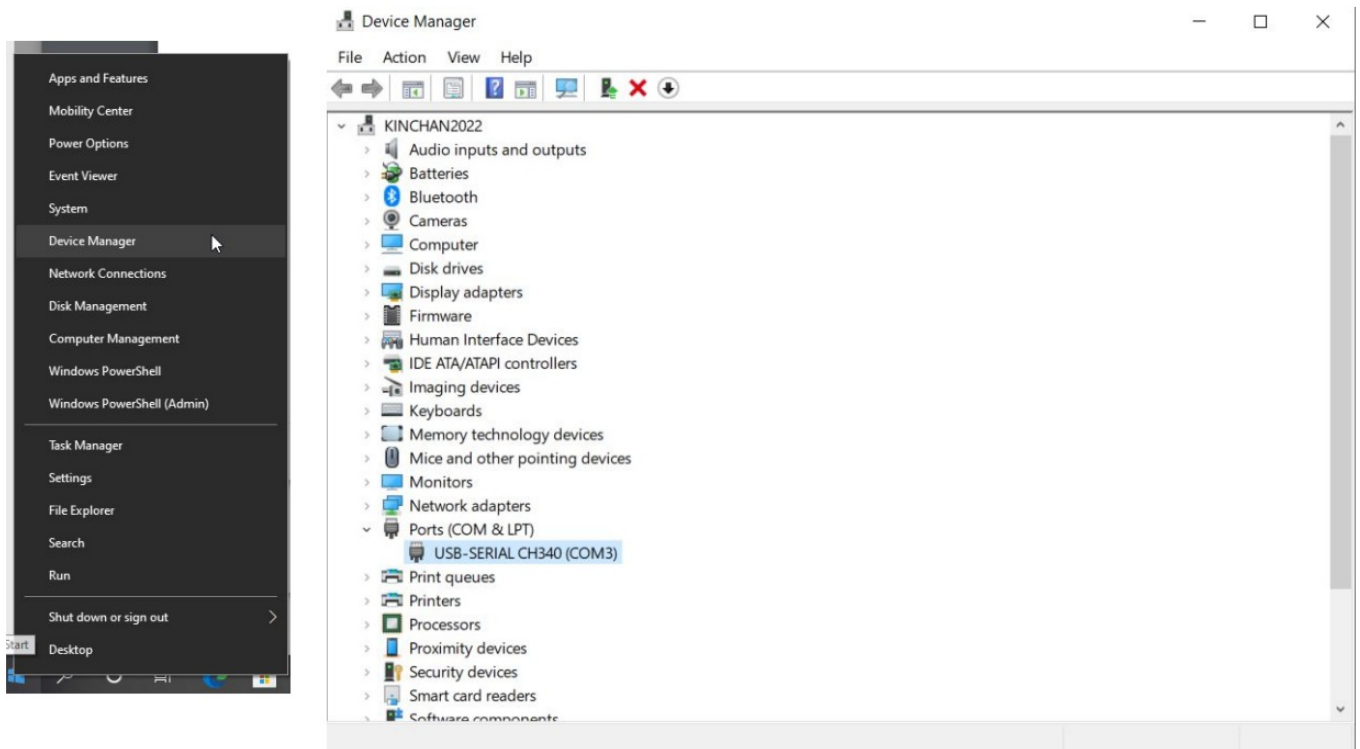


Figure 7

1. Click "Port Config".
2. Select programmer serial port, baud rate 19200, and then click "OK".

After plugging the Bridgelux programming cable into one of the USB ports on your PC. We have to find out which COM port has been assigned to this programming cable

1. Right-click on the “Windows” icon (at the bottom left corner)
2. click on “Device Manager”
3. From the pop-up window, scroll down to “Ports (COM & LPT)”, you should find the “USB-SERIAL CH340 (COM X)”. Write down the COM port number as you will need it when you use the Bridgelux Configuration APP in the next step.
  - For example, this PC assigned the USB-SERIAL CH340 to COM 3 (your PC may assign a different COM port for your case)



## 2.3 Read Write Parameters

### 2.3a Vesta Fusion (Dual Channel Driver)



**Bridgelux Driver Configuration**

User Port Config **Read** Write Load File Export File Loop Write Firmware Update About

**Parameter**

**Only Read Driver Information**

Max Output Power 23 W

Max Load Voltage 42 V

Min Load Voltage 16 V

Max Setting Current 700 mA

Min Setting Current 70 mA

Output Channel 2

**CCT Information**

Physical Warmest 2700 K

Physical Coolest 6500 K

Logical Warmest 2700 K

Logical Coolest 6500 K

**Current Information**

Warm Current 350 mA

Cool Current 350 mA

**Device Information**

Min Dimming Ratio 1% ▾

Dimming To Off Enable ▾

Dimming Mode Tunable White ▾

Dimming Curve Linear ▾

Solo Dimming CCT 4000 K

**Device Information**

Intensity Fade Time 750 ms ▾

CCT Fade Time 0 ms ▾

COM12: Active FW Version: 03.03 **Read All Parameters Success**

**Figure 8**

1. Click Read button. Read all parameters.
2. Click Write button. Write all parameters to driver.
3. Click Export File button. Export all parameter to file.
4. Click Load File button. Load external parameter file.
5. Click Loop Write button. Write all parameters to driver every 2.5s.

Only Read Driver Information	
Max Output Power	Maximum output power of the driver
Max Load Voltage	Maximum load voltage of the driver
Min Load Voltage	Minimum load voltage of the driver
Max Setting Current	Maximum settable current of the driver

Min Setting Current	Minimum settable current of the driver
Output Channel	Number of drive output channels
CCT Information	
Physical Warmest	Configuration physical warmest and coolest color temperature range. The valid range 1500K-7000K, and the color temperature should be the same as that of the lamp.
Physical Coolest	
Logical Warmest	Configuration logical warmest and coolest color temperature range. The logical color temperature range should be within the physical color temperature range.
Logical Coolest	
Current Information	
Warm Current	output current of Warm color channel.
Cool Current	output current of Cool color channel.
Device Information	
Min Dimming Ratio	Minimum dimming ratio, 1% 5% 10% is optional.
Dimming To Off	Enable or disable dimming to OFF
Dimming Mode	Configuration Dimming Mode. Solo dimming: use “0-10V Dim+” voltage to control the intensity of both channels simultaneously. Warm dimming: use “0-10V Dim+” voltage to control for both intensity and color temperature simultaneously. Tunable white: use “0-10V Dim+” voltage control intensity and “0-10V CCT+” voltage control color temperature. Flex: use “0-10v Dim+” + “0-10V CCT+” voltage control intensity. “0-10V Dim+”/ (“0-10V Dim+” + “0-10V CCT+”) voltage control color temperature. Dual Dimming: use “0-10V Dim+” voltage to control warm channel intensity, “0-10V CCT+” voltage to control cool channel intensity.



Dimming Curve	dimming curve, “logarithmic”, “linear”, and “square” is optional
Solo Dimming CCT	CCT when the dimming mode is at Solo Dimming
Intensity Fade Time	Configuration fade time of intensity changing, the fade time of the driver intensity from A to B. 0ms,250ms,500ms,750ms,1000ms,1250ms,1500ms is optional.
CCT Fade Time	Configuration fade time of CCT changing, the fade time of the driver CCT from A to B. 0ms, 250ms, 500ms, 750ms, 1000ms, 1250ms, 1500ms is optional.

## 2.3 Read Write Parameters

### 2.3b Pallas-A (Single Channel Driver)

The screenshot shows the 'Bridgelux Driver Configuration' window. The 'Parameter' tab is selected, displaying three main sections: 'Only Read Driver Information', 'Current Level Information', and 'Device Information'. Below these is a 'Dimming Voltage Information' section. The status bar at the bottom indicates 'COM3: Active', 'FW Version: 01.08', and a green message 'Read All Parameters Success'.

Only Read Driver Information		Current Level Information		Device Information	
Max Output Power	46 W	Level 1	140 mA	Min Dimming Ratio	1% ▾
Max Load Voltage	48 V	Level 2	1400 mA	Dimming To Off	Enable ▾
Min Load Voltage	20 V	Level 3	960 mA		
Max Setting Current	1400 mA	Level 4	960 mA		
Min Setting Current	140 mA	Level 5	1400 mA		
Output Channel	1				

Dimming Voltage Information	
Light Off	0.70 V
Light On	0.80 V
Dimming Minimum	1.00 V
Dimming Maximum	9.10 V

COM3: Active      FW Version: 01.08      Read All Parameters Success

**Figure 9**

1. Click Read button. Read all parameters.
2. Click Write button. Write all parameters to driver.

3. Click Export File button. Export all parameter to file.
4. Click Load File button. Load external parameter file.
5. Click Loop Write button. Write all parameters to driver every 2.5s.

Only Read Driver Information	
Max Output Power	Maximum output power of the driver
Max Load Voltage	Maximum load voltage of the driver
Min Load Voltage	Minimum load voltage of the driver
Max Setting Current	Maximum settable current of the driver
Min Setting Current	Minimum settable current of the driver
Output Channel	Number of drive output channels
Current Information	
Level 1 – Level 4	Reserved for Bridgelux R&D use only
Level 5	output current setting
Device Information	
Min Dimming Ratio	Minimum dimming ratio, 1% 5% 10% is optional.
Dimming To Off	Enable or disable dimming to OFF
Dimming Voltage Information	
Light off	Configuration dimming off voltage.
Light on	Configuration dimming on voltage.
Dimming Minimum	Configuration dimming minimum voltage.
Dimming Maximum	Configuration dimming maximum voltage.

## 2.4 Firmware Upgrade

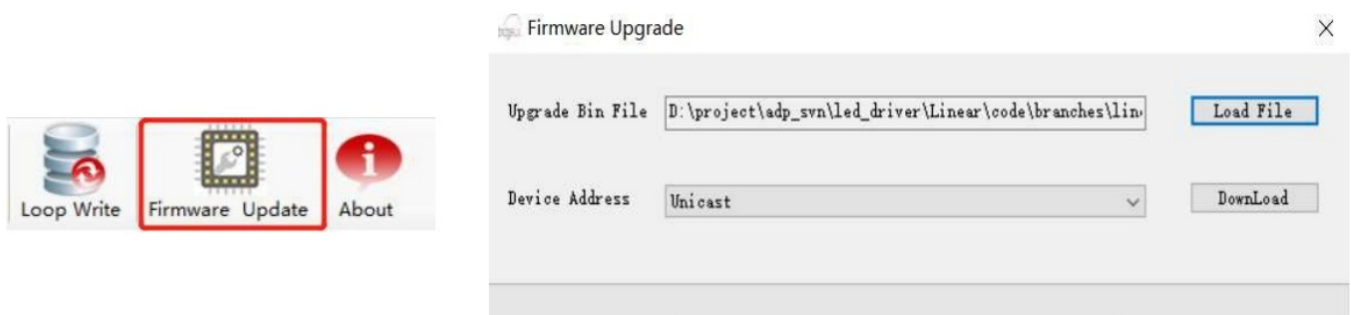
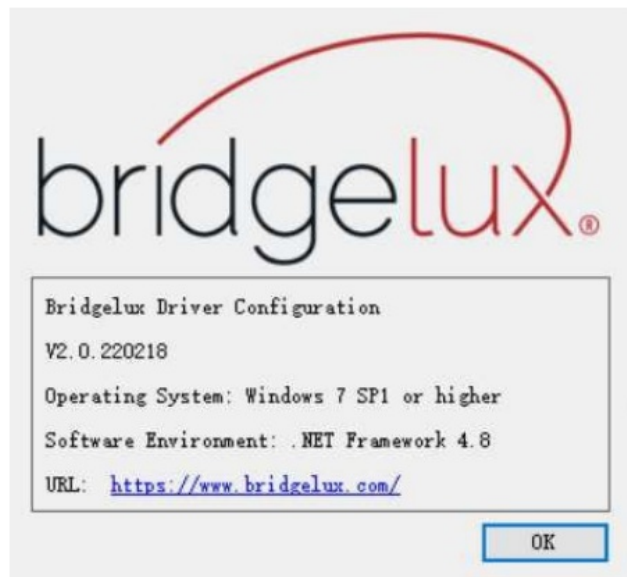


Figure 10

1. Click the Firmware Update button, and open the firmware upgrade UI.
2. Click the Load File button on the firmware upgrade UI, Load Upgrade Bin File.
3. Select device address “Unicast” or “broadcast” and then click the download button.

**Note:** Firmware upgrade is not supported, and will be extended in the future.

## 2.5 About



**Figure 11**

Click the About button, open the software information UI. see figure 11


## Annex A

### 1. Modification record

Version	Description	Note
V1.0	Bridgelux Driver Configuration Software User Manual Initial Version	
V2.0	Added Single Channel Driver programming info	

**V2.0**

## Documents / Resources

	<a href="#">Bridgelux 2022 Driver Configuration Software</a> [pdf] User Manual 2022 Driver Configuration Software, Driver Configuration Software, Software
---	---

## References

-  [Download .NET \(Linux, macOS, and Windows\)](#)

Manuals+.