



BrewZilla 100L Single Phase to Three Phase Conversion Installation Guide

[Home](#) » [BrewZilla](#) » BrewZilla 100L Single Phase to Three Phase Conversion Installation Guide 

Contents

- [1 BrewZilla 100L Single Phase to Three Phase Conversion](#)
- [2 Product Information](#)
- [3 Product Usage Instructions](#)
- [4 INSTRUCTION](#)
- [5 Documents / Resources](#)
 - [5.1 References](#)
- [6 Related Posts](#)



BrewZilla 100L Single Phase to Three Phase Conversion



Product Information

The BrewZilla 100L is a brewing system with a power consumption of 6600 watts. It features three concealed heating elements, each with a power rating of approximately 2200 watts. The brewing system can be powered by a 32-amp single-phase plug when connected to a 220-240V AC power source. It also supports three-phase installation for properties with three-phase power available.

Product Usage Instructions

1. Before starting any installation or conversion, ensure that the brewery is unplugged from power and turned off.
2. To convert the BrewZilla 100L to three-phase power:
 - **Step 1:** Turn the brewery upside down and remove the cover from the electrical enclosure on the underside.
 - **Step 2:** Locate the three terminals labeled H1, H2, and H3 on the board. Remove the jumper cables that bridge these terminals together.
 - **Step 3:** Remove the existing single-phase cable and install a new three-phase cable. Secure the cable through the cable gland.
 - **Step 4:** Connect a ring terminal to the earth and secure it to the body of the BrewZilla. For the three active phases and neutral, put fork terminals on the respective cables.
 - **Step 5:** Connect the cables as follows: Live 1 to H1, Live 2 to H2, Live 3 to H3, and Neutral to N3.
 - **Step 6:** Replace the lid for the electrical enclosure. Use a multimeter to check continuity between the body of the BrewZilla and the Earth on the plug. The resistance should be close to 0 Ohms.
3. **Note:** The installation of the three-phase cable and any electrical modifications should only be performed by a qualified electrician.

INSTRUCTION

BrewZilla 100L Power Consumption

- The BrewZilla 100L has three heating elements that are concealed and integrated into the base of the brewery. These three elements are approximately 2200watts each meaning the total heating capacity of the brewery is 6600watts.
- So if you are using 220-240AC power source the brewery can be powered by 1 x 32amp single phase plug that looks like one of these below:



The plug on the left is the standard type that comes included with the brewery out of the box. This single phase plug is also commonly used for electric ovens or electric hob cooktops that you often see in your kitchen.

Generally speaking the wiring for this type of plug will be 6mm² copper cable but we recommend you seek separate advice from your electrician to install suitable cable.

Three Phase Installation

If your property has three phase power available you may find it favourable to run the brewery on three phases so you are not putting excessive load onto a single phase at your property and split the load over all three phases evenly. In order to do this conversion follow the instructions below:

STEP 1

Unplug the brewery from power, turn the brewery upside down and remove the cover from the electrical enclosure on the underside:

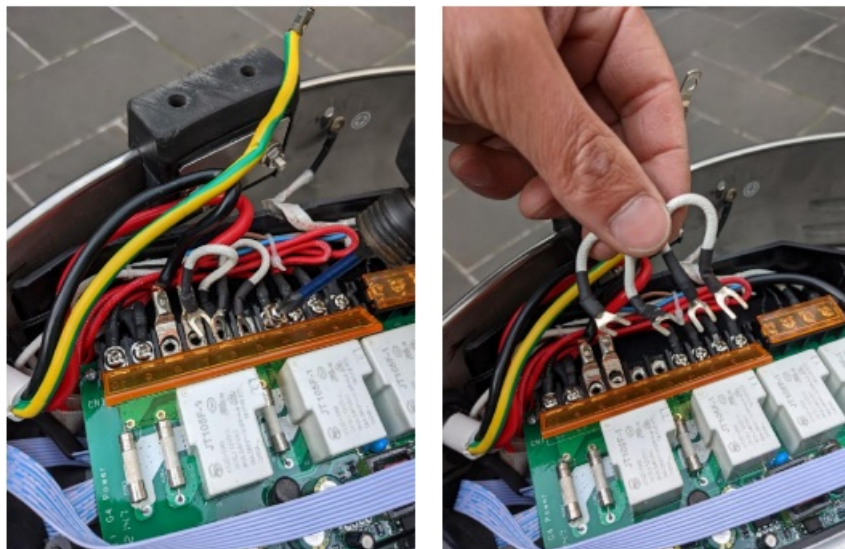


STEP 2

You will see three terminals on the board labelled H1, H2 and H3



These three terminals are connected to the three active sides of the three heating elements. Remove the jumper cables that bridge H1, H2 and H3 together.



STEP 3

Remove the single phase cable and install the new three phase cable making sure to secure the cable through

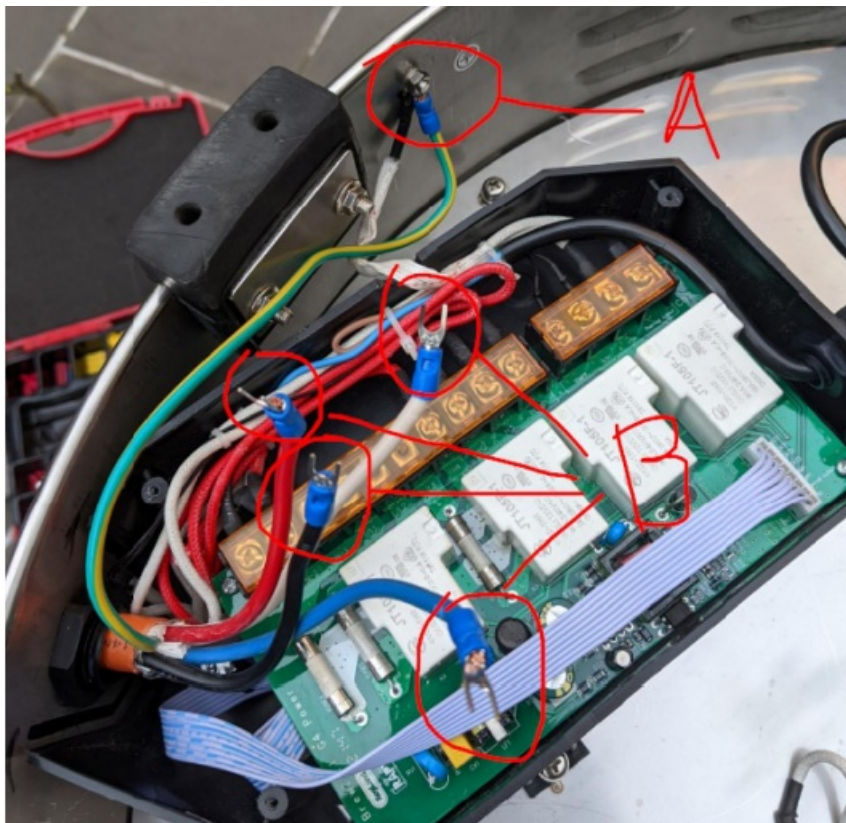
the cable gland as shown below.

In most instances you will need to use a 2.5mm² three phase cable but check the cable requirements with your electrician.



STEP 4

As shown in 'A' below connect a ring terminal to the earth and secure this to the body of the BrewZilla. For the three active phases and neutral put fork terminals on these cables as shown in 'B' below.



STEP 5

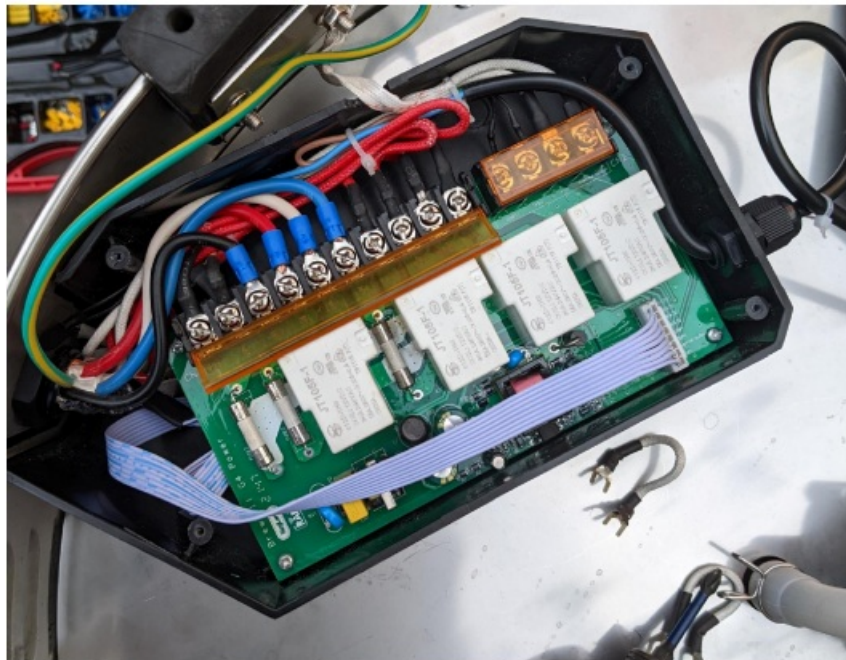
In Australia the cable colours are:

- **RED** – Active (Live 1)
- **WHITE** – Active (Live 2)
- **BLUE** – Active (Live 3)
- **BLACK** – Neutral

NOTE: Please be aware that different countries use different colours for active and neutral so if you check with your local regulations as to which colours are active and neutral.

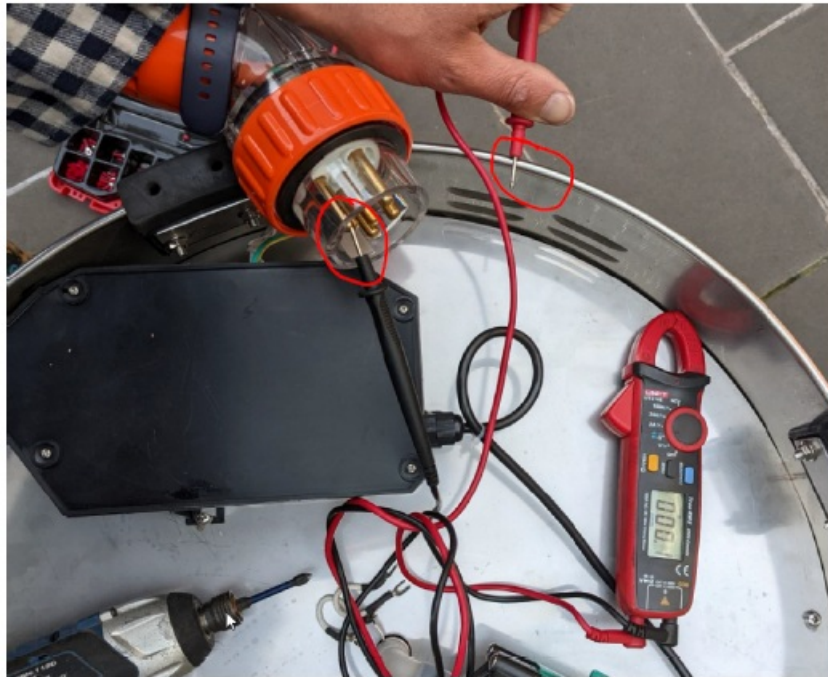
Connect the cables as shown below:

- Live 1 to H1
- Live 2 to H2
- Live 3 to H3
- Neutral to N3



STEP 6


Replace the lid for the electrical enclosure. Use a multimeter to check continuity between the body of the BrewZilla and the Earth on the plug. The resistance should be close to 0 Ohms.



www.KegLand.com.au

Last Updated 27/07/2022 3:49 PM

Documents / Resources

	<p>BrewZilla BrewZilla 100L Single Phase to Three Phase Conversion [pdf] Installation Guide</p> <p>BrewZilla 100L Single Phase to Three Phase Conversion, BrewZilla 100L, Single Phase to Three Phase Conversion, Three Phase Conversion, Phase Conversion, Conversion</p>
---	--

References

-  [Home Brew Supplies - KegLand Australia](#)

[Manuals+](#).