



# BRESSER 8010071 CM3GYE MyTime Echo FXR Digital Alarm Clock with Temperature Display Instruction Manual

[Home](#) » [BRESSER](#) » BRESSER 8010071 CM3GYE MyTime Echo FXR Digital Alarm Clock with Temperature Display Instruction Manual 

## Contents

- [1 BRESSER 8010071 CM3GYE MyTime Echo FXR Digital Alarm Clock with Temperature Display](#)
- [2 GENERAL INFORMATION](#)
- [3 CLEANING AND MAINTENANCE](#)
- [4 EC DECLARATION OF CONFORMITY](#)
- [5 SCOPE OF DELIVERY \(Fig. 1\)](#)
  - [5.1 PARTS OVERVIEW \(Fig. 2-3\)](#)
- [6 Documents / Resources](#)
  - [6.1 References](#)
- [7 Related Posts](#)



**BRESSER 8010071 CM3GYE MyTime Echo FXR Digital Alarm Clock with Temperature Display**



[www.bresser.de/P8010071000000](http://www.bresser.de/P8010071000000)



[www.bresser.de/warranty\\_terms](http://www.bresser.de/warranty_terms)

## GENERAL INFORMATION

### About this Instruction Manual

Read the safety instructions and the instruction manual carefully before using this device. Keep this instruction manual in a safe place for future reference. When the device is sold or given to someone else, the instruction manual must be provided to the new owner/user of the product.

### Intended use

This device is for personal use only. It was developed as an electronic medium for the use of multimedia services. This product is available in several shapes and colours. The instruction manual refers to all available variants.

### DANGER!

You will find this symbol before every section of text that deals with the risk of minor to severe injuries resulting from improper use.

### ATTENTION!

You will find this symbol in front of every section of text which deals with the risk of damage to property or the environment.

## **GENERAL WARNINGS**

### **DANGER OF SUFFOCATION!**

This product contains small parts that can be swallowed by children! There is a DANGER OF CHOKING!

### **RISK OF ELECTRIC SHOCK!**

This unit contains electronic parts that are powered by a power source (AC adapter and/or batteries). Follow the instructions carefully and do not attempt to power this device with anything other than power sources recommended in this instruction manual, otherwise there is a DANGER of an ELECTRIC SHOCK!

### **DANGER OF BURNS!**

Leaking battery acid can lead to chemical burns. Avoid contact of battery acid with skin, eyes and mucous membranes. In the event of contact with acid, rinse the affected region immediately with a plenty of water and seek for medical attention.

### **FIRE/EXPLOSION HAZARD!**

Do not expose the device to high temperatures. Use only the supplied AC adapter or the recommended batteries. Do not short-circuit the device or batteries or dispose of in fire! Excessive heat and improper handling can cause short circuits, fires and even explosions!

### **DANGER of material damage!**

- Do not disassemble the device. In the event of a defect, please contact your dealer. They will contact the Service Center and can arrange the return of this device for repair if necessary.
- Do not immerse the unit in water.
- Do not expose the device to strong shocks, vibrations, dust, permanently high temperatures or extreme humidity. This can lead to malfunctions, short circuits, damage to batteries and components.
- This device cannot be operated simultaneously with batteries and a power adapter. The simultaneous use will cause irreparable damage to the device, for which the manufacturer is not liable!
- Use only the recommended batteries. Always replace weak or empty batteries with a new, complete set of batteries at full capacity. Do not use batteries from different brands or types or 7 with different capacities. Remove batteries from the device if it is not to be used for a longer period of time!
- The manufacturer is not liable for voltage damage due to improperly inserted batteries or through the use of an improper power adapter!

## **CLEANING AND MAINTENANCE**

Disconnect the device from the power supply (remove plug or batteries) before cleaning!

Clean the device only externally with a dry cloth. Do not use cleaning fluid to avoid damage to the electronics. Protect the device from dust and moisture! Remove batteries from the device if it is not to be used for a longer period of time!

## **EC DECLARATION OF CONFORMITY**

A "Declaration of conformity" in accordance with the applicable directives and corresponding standards has been prepared by Bresser GmbH. This can be viewed at [www.bresser.de/download/8010071000000/CE](http://www.bresser.de/download/8010071000000/CE)



## DISPOSAL

Dispose of the packaging materials by type. Contact your local waste-disposal service or environmental authority for information on the proper disposal.



Do not dispose of electronic devices in the household garbage! According to the European Directive 2002/96/EU on Waste Electrical and Electronic Equipment and its transposition into national law, used electrical equipment must be collected separately and recycled in an environmentally sound manner.

## SCOPE OF DELIVERY (Fig. 1)

Digital alarm clock (A), power dapter (B), instruction manual

### **Required batteries (optional, not included):**

3 pcs. Micro batteries (1.5V, type AAA/LR03)

## PARTS OVERVIEW (Fig. 2-3)

1. Housing
2. Time display (current time or alarm time)
3. Symbol for activated wake-up time
4. Temperature display
5. LOOP display
6. Mains adapter with Euro plug
7. DC Barrel connector
8. Speaker
9. (+) key
10. Slider control
11. (–) key
12. RESET Knob
13. TIME key
14. DC connection socket
15. ALARM key
16. Battery compartment
17. Battery compartment cover

Fig. (1)

(A)



(B)

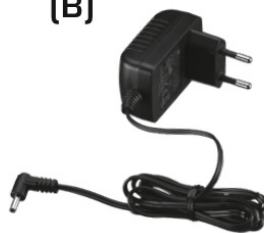


Fig. (3)

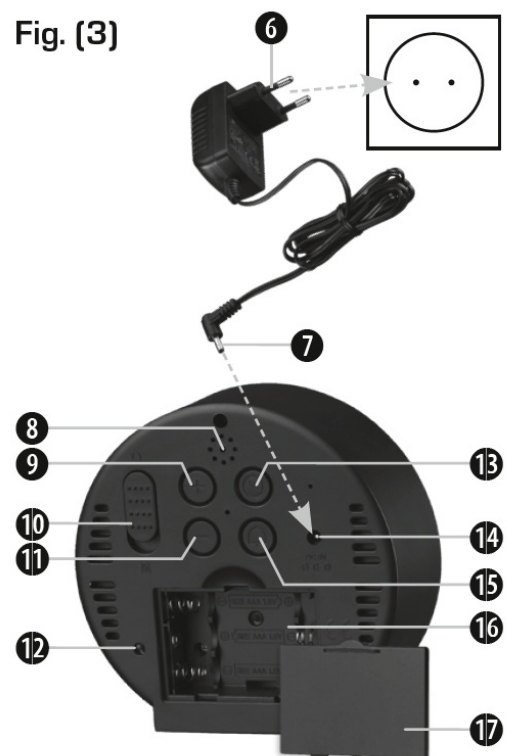


Fig. (2)



4

Fig. (1)

(A)



(B)



Fig. (3)

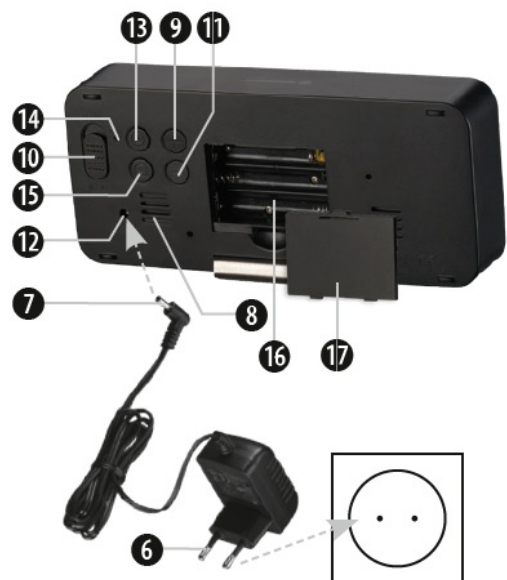


Fig. (2)



## POWER SUPPLY

NOTE! Never operate the device with batteries and the mains adapter at the same time!

### Mains power operation

1. Put the DC barrel connector (Fig. 3, 7) of the mains adapter (Fig. 1, B) into the DC connection socket (Fig. 3, 14) of the clock alarm clock (Fig. 1, A).
2. Insert the Euro plug into the power socket.

## **Battery-powered operation (optional)**

1. Remove the battery compartment cover (Fig. 3, 17).
2. Insert 3 batteries (type AAA/LR03, 1.5V) according to the indicated polarities (+/–) into the battery compartment (Fig. 3, 16).
3. Replace the battery compartment cover.

## **TIME SETTING**

1. In normal time mode, hold the TIME key (Fig. 3, 13) for about 3 seconds to switch to time setting mode. Here you can set the current time and 12/24 Hr display mode.
2. Press the keys (+) or (–) to set the desired values and press the TIME key to switch to the next setting item.
3. Finally, press the TIME key to save the settings and exit settings mode.

## **ALARM TIME SETTING**

1. In normal time mode, press the ALARM key (Fig. 3, 15) to switch to the alarm time display.
2. While the alarm time is displayed, hold the ALARM key for about 3 seconds to switch to the alarm time setting.  
The hour display flashes.
3. Press the keys (+) or (–) to set the desired hour 10 value.
4. Press the ALARM key. The minute display flashes.
5. Press the keys (+) or (–) to set the desired minute value.
6. Finally, press the ALARM key to save the settings and exit settings mode.

### **ENABLE/DISABLE ALARM**

7. After setting the alarm time, move the slider control (Fig. 3, 10) to 'ON' position to enable the wake-up call. The alarm symbol (Fig. 2, 3) will displayed on the LCD.
8. When the alarm sounds at the set alarm time, press any key to stop the alarm until the same time the next day.
9. Move the slider control to 'OFF' position to permanently disable the alarm.

## **DISPLAY BRIGHTNESS**

The following brightness levels can be set for the LCD: bright, medium, low.

In normal display mode, press the (+) key to set the desired brightness level.

**NOTE:** The dimming function can only be used if the device is operated with mains power.

## **ENERGY SAVING MODE**

When powered by batteries, the alarm clock is operated in energy-saving mode. In this mode the LCD is not lit permanently, but can be activated for 8 seconds by pressing any key. Also the display brightness can not be changed.

## **NIGHT MODE**

When night mode is set to ON, the display automatically changes to the darkest brightness level. You can set the time when night mode is activated or deactivated.

1. In normal time mode, press the TIME key (Fig. 3, 13) two times, to switch to the night mode.
2. Press the keys (+) or (–) to set the night mode ON or OFF.
3. Press and hold the TIME key for 3 seconds to enter night mode time settings.

4. First you can set the time to enter the night mode and then the time to exit the night mode.
5. Press the keys (+) or (–) to set the desired values and press the TIME key to switch to the next setting item.
6. Press the TIME key to save the settings and exit settings mode.

## TEMPERATURE DISPLAY

This digital alarm clock also measures the current ambient temperature, which can be shown on the display manually or in continuous alternation with the time.

### Manual display change

In normal display mode, press the TIME key (Fig. 3, 13) to switch to the temperature display (Fig. 2, 4) for 5 seconds.

### °C/°F temperature display

#### MyTime Echo FXR (Art. No. 8010071):

In normal display mode, press and hold the (–) key (Fig. 3, 11) for 3 seconds to toggle between °C and °F.

#### MyTime Echo FXL (Art. No. 8010072):

1. Switch to the temperature mode by pressing the TIME key.
2. Press the (–) key to toggle between °C and °F.

### Automatic display change

#### MyTime Echo FXR (Art. No. 8010071):

In normal display mode, press the (–) key to set a different display mode.

Press (–) 1x = (dP-1):

Display time only

Press (–) 2x = (dP-2):

Time/temperature cycle display

#### MyTime Echo FXL (Art. No. 8010072):

1. In normal display mode, press and hold the (+) key to activate the Time/temperature cycle display (loop is displayed).
2. Press and hold the (+) again to deactivate the loop mode.

## WARRANTY & SERVICE

The regular guarantee period is 5 years and begins on the day of purchase. You can consult the full guarantee terms at [www.bresser.de/warranty\\_terms](http://www.bresser.de/warranty_terms)

Gutenbergstr. 2 · DE-46414 Rhede  
Germany

[www.bresser.de](http://www.bresser.de) · [service@bresser.de](mailto:service@bresser.de)

## Documents / Resources



## [BRESSER 8010071 CM3GYE MyTime Echo FXR Digital Alarm Clock with Temperature Display](#) [pdf] Instruction Manual

8010071 CM3GYE MyTime Echo FXR Digital Alarm Clock with Temperature Display, 8010071 CM3GYE, MyTime Echo FXR Digital Alarm Clock with Temperature Display, MyTime Echo FXR Digital Alarm Clock, Digital Alarm Clock, Alarm Clock, Clock

## References

- [Bresser](#) | [Startseite](#) | [Expand Your Horizon mit BRESSER](#)
- [Bresser](#) | [Startseite](#) | [Expand Your Horizon mit BRESSER](#)
- [Bresser](#) | [MyTime Echo FXR Wecker](#) | [Expand Your Horizon](#)
- [bresser.de/warranty\\_terms](#)