



Contents [[hide](#)]

- 1 [BRC Solar ON4310 BRConnect Gateway](#)
- 2 [Product Usage Instructions](#)
- 3 [SCOPE OF DELIVERY](#)
- 4 [SAFETY INSTRUCTIONS](#)
- 5 [PRODUCT OVERVIEW](#)
- 6 [LED OVERVIEW](#)
- 7 [INSTALLATION](#)
- 8 [POWER MANAGER APP](#)
- 9 [OPERATION AND MAINTENANCE](#)
- 10 [REPLACEMENT AND REPAIR](#)
- 11 [DISPOSAL](#)
- 12 [PRODUCT COMPLIANCE AND CONTACT](#)
- 13 [Power Manager App](#)
- 14 [Frequently Asked Questions](#)
- 15 [Documents / Resources](#)
 - 15.1 [References](#)



BRC Solar ON4310 BRConnect Gateway



Specifications

- **Model:** BRConnect Gateway
- **IP Rating:** IP40
- **Connectivity:** Ethernet, WLAN (WiFi 4; 802.11n)
- **WiFi Frequency Range:** 2.4 GHz

Product Usage Instructions

Safety Instructions

- Always follow the safety guidelines provided in the manual. Do not attempt to open the housing or perform any internal work on the product.

Product Overview

- BRConnect Gateway is designed for use with BRC Power Manager to manage powerline communication and DC connections. It is equipped with LED indicators for status monitoring.

Installation

1. Attach the wall mount: Mark the position, drill holes, insert dowel pins, and mount the wall mount securely.
2. Clip BRConnect onto the designated wall mount pins by pressing evenly on both sides until it locks in place.

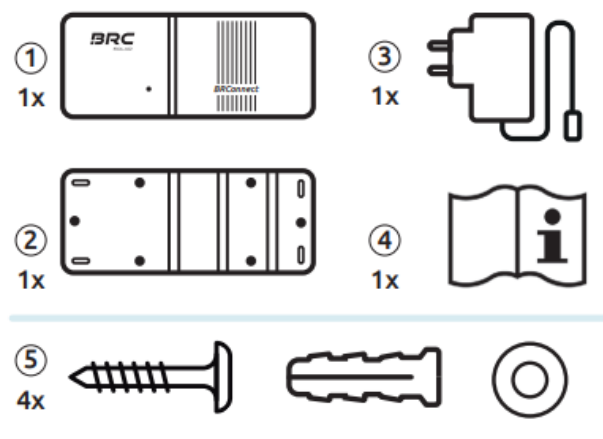
LED Overview

- **No Light:** Power Off
- **Lights up Blue:** Standby
- **Slowly Flashes Blue:** Connecting
- **Lights up Green:** Connected
- **Slowly Flashes Green:** Data Transfer
- **Quickly Flashes Green:** Active
- **Lights up Yellow:** Warning
- **Lights up Red:** Error

Power Manager App

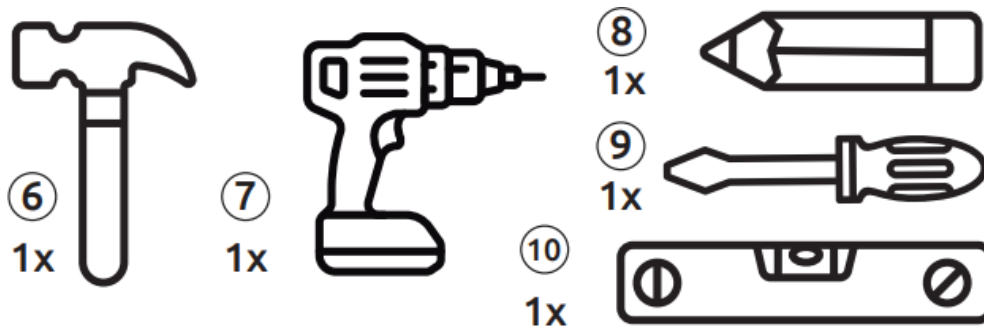
Download the Power Manager app to manage and monitor the BRConnect Gateway. Follow the app instructions for setup and configuration.

SCOPE OF DELIVERY



1. BRConnect
2. Wall mount
3. Power supply
4. Instruction manual
5. Mounting kit

- **Required tools**



- **Operating accessories**



- **Required tools & accessories**

6. Hammer
7. Drill
8. Pencil
9. Torx T20 screwdriver
10. Spirit level
11. Ethernet cable
12. 230V socket

- WEBSITE WWW.BRC-SOLAR.DE



SAFETY INSTRUCTIONS

A) GENERAL

- The BRConnect may only be operated under the intended use and the specified technical data.
- Please note all instructions from BRC Solar GmbH given in the instruction manual, as well as the warning notices on the BRConnect. The warning notices on the BRConnect must always be legible and must not be removed, changed or manipulated.

- Applicable local laws, regulations, directives and standards must be given priority for operation, installation, uninstallation and maintenance.
- The safety instructions in the instruction manual are not complete and only serve as supplementary information.

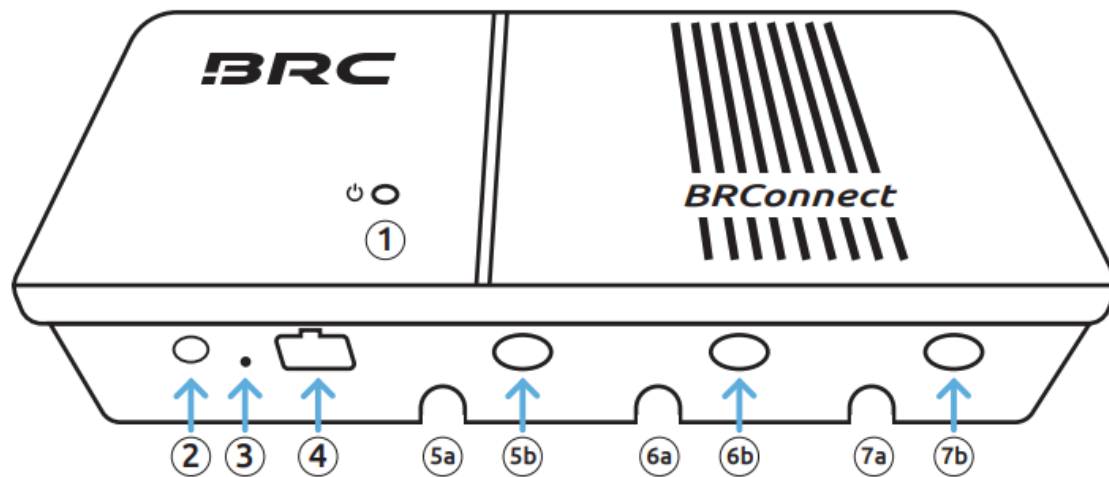
B) ELECTRICAL SPECIALISTS

- All work related to the product may only be carried out by qualified electricians. The electrician must comply with national and regional regulations.
- Please read and follow all instructions carefully before installation. If there are any uncertainties or you need detailed information? Call our service hotline.
- Electrical work may only be carried out in compliance with the 5 safety rules of electrical engineering.
- Only install an intact BRConnect with a complete scope of delivery. Only use the accessories included in the delivery, especially regarding the power supply.
- Do not make any modifications to the BRConnect.
- Pay particular attention to running voltage-free string cables through the BRConnect during assembly to prevent electric shocks.

C) END USER

- Under no circumstances should you carry out any work on the BRConnect yourself.
- Do not open the housing.
- Please keep the instruction manual so that it is available for all activities related to the product.

PRODUCT OVERVIEW



1. LED
2. 24V DC connection
3. reset button
4. LAN Ethernet socket
5. cable bushing of string 1
 - 5 a) string –
 - 5 b) string +
6. **cable bushing of string 2**
 - 6 a) **B2-** string –
 - 6 b) **B2+** string +
7. **cable bushing of string 3**
 - 7 a) **B3-** string –
 - 7 b) **B3+** string +

B) INTENDED USE

- The BRConnect is a gateway which, in combination with the M600-M and the BRC Power Manager, is used for data monitoring of the photovoltaic system at the module level.
- Data from the M600-M is communicated to the BRConnect using powerline communication via DC cables and processed there.
- The end user can view this data via the BRC Power Manager App, making it possible to monitor the photovoltaic system.
- To use the product as intended, a fixed installation is required, which must be carried out by a qualified electrician under the instructions in point 4.

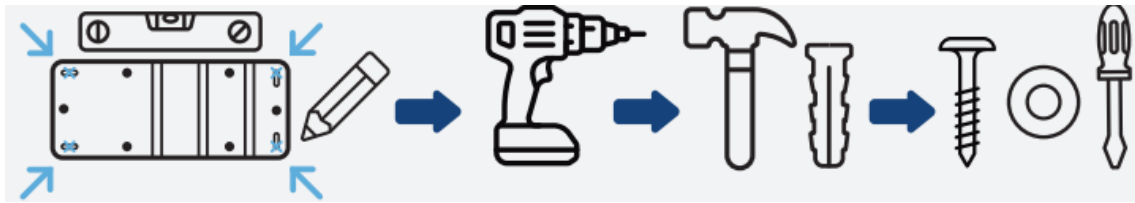
- When setting up the BRConnect, please ensure compliance with the specified technical data. Pay particular attention to the following information:
- The BRConnect is rated protection class IP40 and is therefore intended for indoor use.
- Please keep the device away from liquids, humidity and heat sources as well as direct sunlight.
- The product is designed for operation at ambient temperatures of – 20°C to + 55°C.
- The product is only approved for operation up to 2,000m above sea level.
- The BRConnect has Ethernet and WiFi interfaces to provide the data to the BRC Power Manager.
- **WiFi standard:** WiFi 4; 802.11n
- **WiFi frequency range:** 2.4 GHz
- If the use deviates from the use explained here, this is considered improper use. The manufacturer assumes no liability for damage caused by improper use.
- The information in the limited product warranty applies (<https://brc-solar.de/downloads/>).

LED OVERVIEW

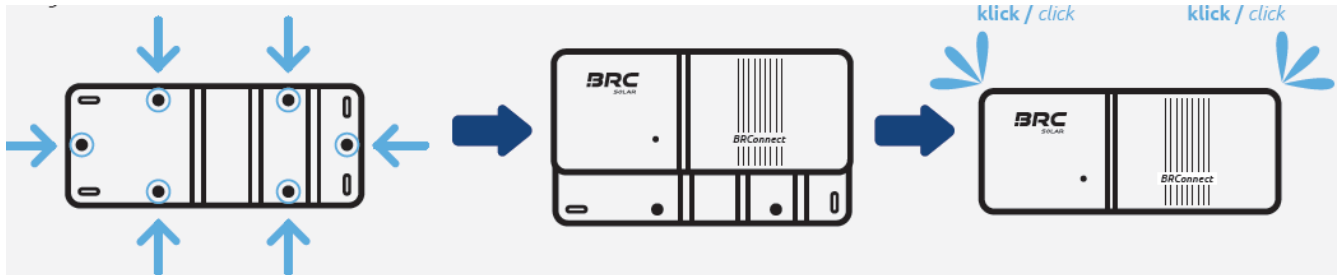
LED сигнал / LED signal	Обяснение / Explanation
<p>Не свети / no light</p> 	BRConnect няма захранване или е дефектен, проверете захранването. В противен случай се свържете с поддръжката. / BRConnect has no power supply or is defective, check power supply . Otherwise contact support hotline.
<p>Свети в синьо / lights up blue</p> 	Видимо веднага след стартиране (около 7-8 секунди), след което преминава в режим на Bluetooth връзка и след успешна настройка чрез приложението Power Manager отново се вижда като нормално състояние. / Visible immediately after starting (approx. 7-8 sec), then switches to Bluetooth connection mode and can be seen again as normal state after successful setup via Power Manager App.
<p>Мига бавно в синьо / slowly flashes blue</p> 	Изчакване на Bluetooth връзка с телефон/таблет. Отворете приложението Power Manager и следвайте инструкциите в приложението (вижте страница 8) до стъпка 6. Сега започва търсенето на BRConnect = честота на мигане 1 секунда светва, 1 секунда изгасва. / Waiting for Bluetooth connection with mobile phone/tablet. Open Power Manager App, follow the app instructions (see page 8) up to step 6. Now the search for BRConnect is running = flashing frequency 1 second on, 1 second off.
<p>Свети в зелено / lights up green</p> 	Установена е Bluetooth връзка с телефон/таблет. Задайте информацията за стринга в приложението Power Manager. Въведете IP адреса и настройките на WLAN чрез приложението Power Manager или свържете Ethernet кабел. / Bluetooth connection with mobile phone/tablet established. Set string information in Power Manager App. Enter the IP address and WiFi settings via the Power Manager App or plug in the Ethernet cable.
<p>Мига бавно в зелено / slowly flashes green</p> 	Изгражда се връзка с локалната мрежа (не е необходимо действие, ако състоянието продължи дълго, проверете връзката с локалната мрежа) = честота на мигане 1 секунда светва, 1 секунда изгасва. / Establishing connection to local network (no action necessary, check local network connection if the status persists) = flashing frequency 1 second on, 1 second off.
<p>Мига бързо в зелено / quickly flashes green</p> 	Мрежовата връзка е активна , установява се връзка с облака (не е необходимо действие, ако състоянието продължи дълго, проверете интернет връзката) = честота на мигане 200 ms светва, 200 ms изгасва. / Network connection active , establishing connection to cloud (no action necessary, check internet connection if the status persists) = flashing frequency 200ms on, 200ms off.
<p>Свети в жълто / lights up yellow</p> 	Предупреждение , функционалността е ограничена, моля, изключете BRConnect от захранването и го свържете отново за рестартиране. Ако сигналят продължава, моля, свържете се с поддръжката / Warning , functionality limited, please disconnect BRConnect from the power supply and reconnect it to restart. If the signal persists, please contact support.
<p>Свети в червено / lights up red</p> 	Грешка , възможно е BRConnect да е дефектен. Моля, изключете BRConnect от захранването и го свържете отново за рестартиране. Ако сигналят продължава, моля, свържете се с поддръжката / Error , BRConnect may be defective. Please disconnect BRConnect from the power supply and reconnect it to restart. If the signal persists, please contact support.

INSTALLATION

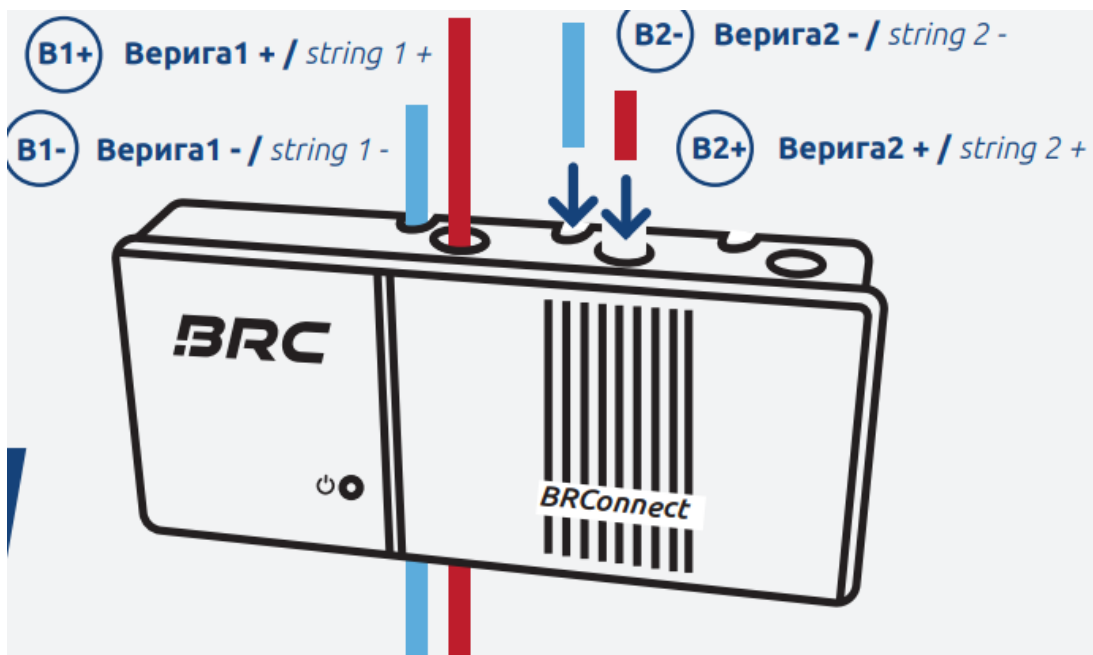
1. **Attach the wall mount:** Mark the position with a pencil and spirit level, drill 4 holes (size 6mm) and sink 4 dowel pins, mount the wall mount with 4 screws, washers and a screwdriver.



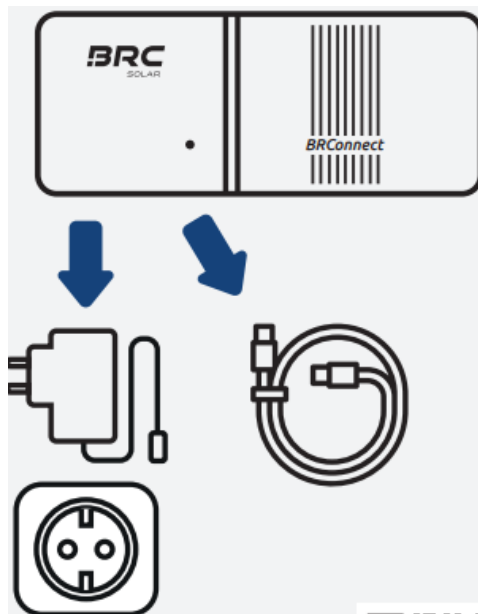
2. **Clip BRConnect onto the designated pins of the wall mount:** To do this, press evenly on both sides until you hear a click.



3. **Pass the string cable through the cable bushing:** Make sure that the string cable is voltage-free when passing through.
 - Pay attention to the correct connection arrangement of the string cables; otherwise, errors or inoperability may occur.
 - Note the sticker on the top and peel it off.
 - Connect the string cable to the inverter with the DC switch off: Pay attention to the correct polarity.
 - Connect the string cable to the PV system, then switch on the DC side of the inverter.



4. **Connect 24V and Ethernet:** BRConnect LED lights up briefly in blue, then flashes slowly in blue and waits for Bluetooth connection.

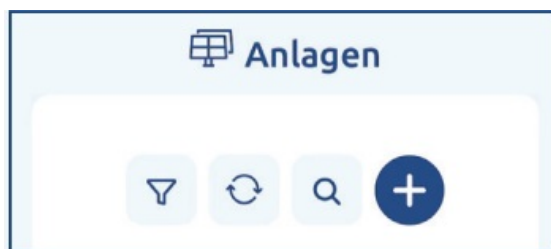


- Video instructions for assembly and app setup



POWER MANAGER APP

1. **Install App:** Available on App Store and Play Store.



2. Register, log in, and click the plus symbol to set up a new plant. An internet connection is required for this.

<p>Allgemeine Angaben</p> <p>Anlagenname*</p> <hr/> <p>Alias Name*</p> <hr/> <p>Straße*</p> <hr/>	<p><input checked="" type="checkbox"/> Eigentümer hat der Datenhinterlegung zugestimmt*</p> <p>Eigentümer der Anlage</p> <p>Auftragsnummer</p> <hr/> <p>E-Mail</p> <hr/>
--	---

3. Fill in the general information and the owner information.
4. Enter solar module and inverter data and select whether a battery storage or a wallbox is integrated.

5. Select Start configuration to continue the setup, or Save & configure later.
- The optimisers must already be installed, and the BRConnect must be powered for further setup.

6. BRConnect automatically waits for a Bluetooth connection after starting. Select the BRConnect via the app and connect.

7. Enter how many optimisers (M600-M) are connected per string.

8. Connect the BRConnect to the internet via WiFi or Ethernet. The app will then search for the available optimisers.

Netzwerk

Netzwerkeinstellungen fest...

Bitte hinterlege die Netzwerkeinstellungen und WLAN-Konfiguration für dein BRConnect.

☒ IP Adresse automatisch beziehen

☐ Folgende IP Adresse verwenden:

WLAN-Konfiguration

WLAN SSID

WLAN Passwort

Abbrechen
Weiter >

Optimierer suchen

String 1:
Optimierer: 0 von 7 gefunden

String 2:
Optimierer: 0 von 7 gefunden

String 3:
Optimierer: 0 von 7 gefunden

Suche nach Optimierern läuft

Dieser Schritt kann bis zu 10 Minuten dauern.

9. Create a string plan using drag & drop and place the optimisers.

Erstelle den Stringplan für dein BRConnect.

Bitte erstelle den Stringplan per Drag and Drop mit Long-Klick. Eingefügte Optimierer können durch Doppelklick wieder entfernt werden.

String 1

FFF1 AA00
FFF1 AA01
FFF1 AA02
FFF1 AA03
FFF1 AA04

Erstelle den Stringplan für dein BRConnect.

Bitte erstelle den Stringplan per Drag and Drop mit Long-Klick. Eingefügte Optimierer können durch Doppelklick wieder entfernt werden.

String 1

FFF1 AA04
FFF1 AA05
FFF1 AA06
FFF1 AA07
FFF1 AA08

FFF1 AA00

FFF1 AA01

FFF1 AA02

FFF1 AA03

FFF1 AA04

10. Successful completion of the setup.

Abschluss

✔ **Geschafft!**

Prima, die neue Anlage wurde fertig erstellt! Der Eigentümer hat eine Einladung per E-Mail erhalten.

Zurück zum Dashboard

OPERATION AND MAINTENANCE

- Only clean the BRConnect with a dry, lint-free cloth. Do not use cleaning agents or solvents. The BRConnect is maintenance-free. If a problem persists, contact support.

REPLACEMENT AND REPAIR

- The steps for dismantling the BRConnect must be carried out in the reverse order of installation (see Chapter 4):
- Switch off the DC side of the inverter.
- Ensure that the string cables are voltage-free.
- Remove the power supply to disconnect the BRConnect from the circuit. Remove the

Ethernet cable.

- Release the string cables from the cable bushings.
- Dismount the BRConnect by evenly removing it straight from the wall mount.
- Repairs must not be carried out.

DISPOSAL

- The transport packaging can be recycled through local waste disposal.
- After use, the BRConnect and all associated components are to be disposed of as electronic waste under the laws applicable in the country.

PRODUCT COMPLIANCE AND CONTACT

- BRC Solar GmbH, located at Gehrstraße 7 in D-76275 Ettlingen, Germany, declares that the product BRConnect complies with the basic requirements of the national directives if the installation instructions are observed and the product is used as intended.
- A complete declaration of conformity can be found on the website (www.brc-solar.de) of BRC Solar GmbH.

Power Manager App



Instruction manual BRConnect Gateway

- www.brc-solar.de



Frequently Asked Questions


Can I perform internal work on the BRConnect Gateway?

No, under no circumstances should you carry out any work on the BRConnect yourself. Refer to a qualified technician for any internal maintenance.

What do the different LED indicator colours signify?

The LED colours indicate various statuses such as standby, connection, data transfer, warnings, and errors. Refer to the LED overview section for details.

Documents / Resources

	BRC Solar ON4310 BRConnect Gateway [pdf] User Manual ON4310 BRConnect Gateway, ON4310, BRConnect Gateway, Gateway
---	--

References

- [User Manual](#)

■ BRC
SOLAR

◆ BRC SOLAR, BRConnect Gateway, gateway, ON4310, ON4310 BRConnect
Gateway

Leave a comment

Your email address will not be published. Required fields are marked *

Comment *

Name

Email

Website

☐ Save my name, email, and website in this browser for the next time I comment.

Post Comment

Search:

e.g. whirlpool wrf535swhz

Search

[Manuals+](#) | [Upload](#) | [Deep Search](#) | [Privacy Policy](#) | [@manuals.plus](#) | [YouTube](#)

This website is an independent publication and is neither affiliated with nor endorsed by any of the trademark owners. The "Bluetooth®" word mark and logos are registered trademarks owned by Bluetooth SIG, Inc. The "Wi-Fi®" word mark and logos are registered trademarks owned by the Wi-Fi Alliance. Any use of these marks on this website does not imply any affiliation with or endorsement.