



---

[Home](#) » [BRC SOLAR](#) » **BRC Solar BRConnect Monitoring Gateway User Guide** 

## **Contents** [ [hide](#) ]

- [1 BRC Solar BRConnect Monitoring Gateway](#)
- [2 Product Information](#)
- [3 SCOPE OF DELIVERY](#)
- [4 Operating accessories](#)
- [5 SAFETY INSTRUCTIONS](#)
- [6 PRODUCT OVERVIEW](#)
- [7 INSTALLATION](#)
- [8 OPERATION AND MAINTENANCE](#)
- [9 DISPOSAL](#)
- [10 FAQ](#)
- [11 Documents / Resources](#)
  - [11.1 References](#)



## **BRC Solar BRConnect Monitoring Gateway**



## Specifications

- BRConnect Gateway
- WiFi Standard: WiFi 4; 802.11n
- WiFi Frequency Range: 2.4 GHz

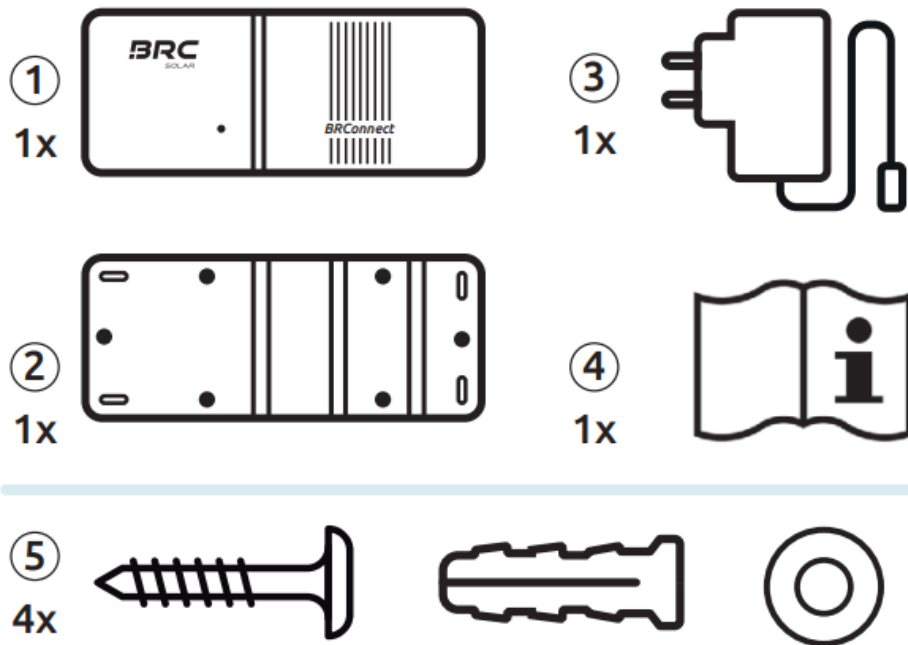
## Product Information

The BRConnect Gateway is designed to work in conjunction with the M600-M and BRC Power Manager for data monitoring of photovoltaic systems at the module level. It facilitates communication of data from the M600-M to the BRConnect via Powerline communication through DC cables.

### Key considerations include:

- Proper cable bushing for each string
- Correct connection arrangement of string cables
- Adherence to safety instructions for installation

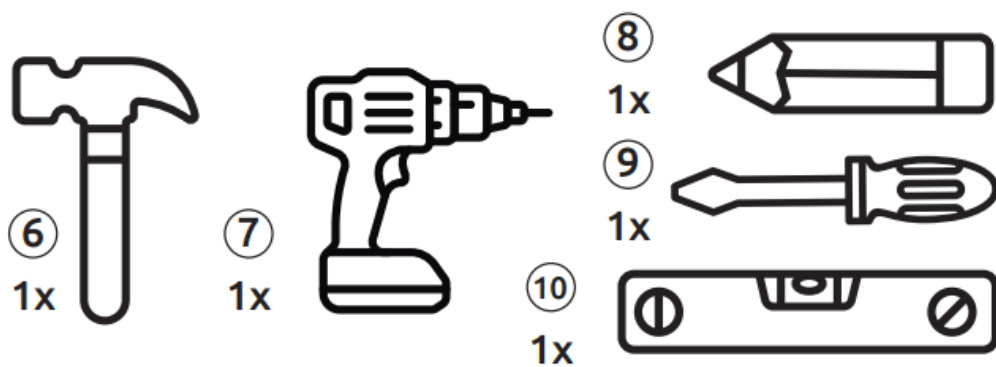
## SCOPE OF DELIVERY



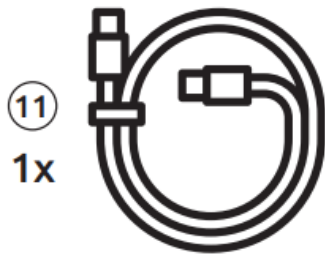
### Scope of supply

1. BRCConnect
2. Wall mount
3. Power supply
4. Instruction manual
5. Mounting kit

### Required tools



### Operating accessories



## Required tools & accessories

- 6 Hammer
- 7 Drill
- 8 Pencil
- 9 Torx T20 screwdriver
- 10 Spirit level
- 11 Ethernet cable
- 12 230V socket

## SAFETY INSTRUCTIONS

### GENERAL

- The BRConnect may only be operated in accordance with the intended use and the specified technical data.
- Please note all instructions from BRC Solar GmbH given in the instruction manual as well as the warning notices on the BRConnect. The warning notices on the BRConnect must always be clearly legible and must not be removed, changed or manipulated.
- Applicable local laws, regulations, directives and standards must be given priority for operation, installation, uninstallation and maintenance. The safety instructions in the instruction manual are not complete and only serve as supplementary information.

### ELECTRICAL SPECIALISTS

- All work related to the product may only be carried out by qualified electricians. The electrician must comply with national and regional regulations.
- Please read and follow all instructions carefully before installation. If there are any

uncertainties or you need detailed information call our service hotline.

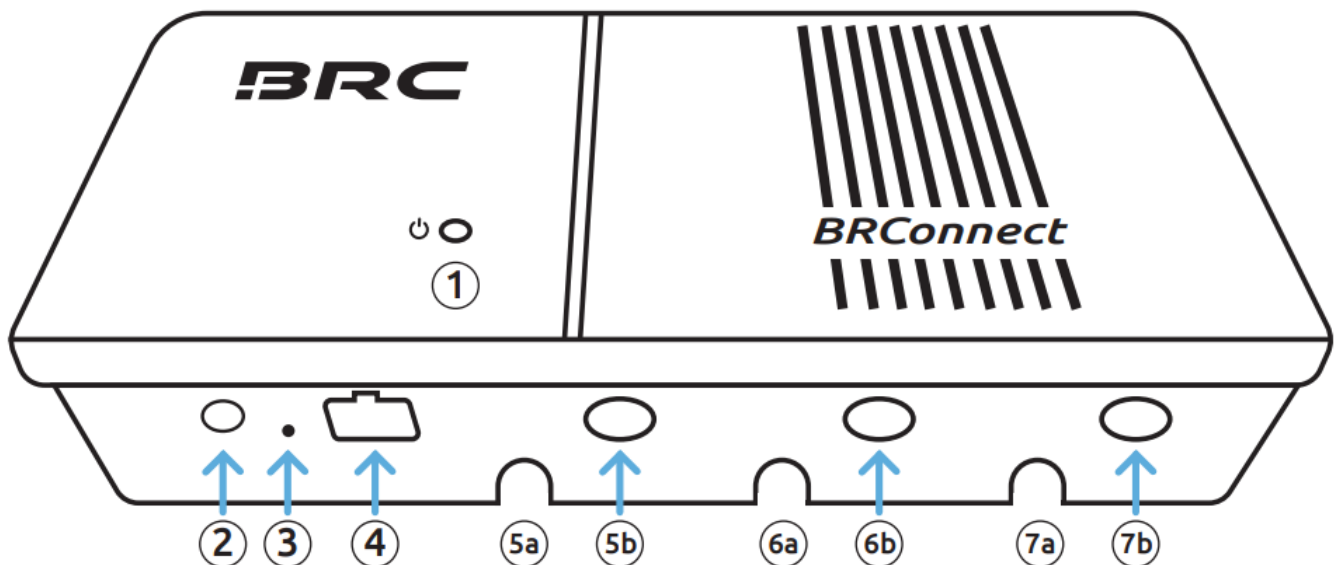
- Electrical work may only be carried out in compliance with the 5 safety rules of electrical engineering. Only install an intact BRConnect with a complete scope of delivery. Only use the accessories included in the delivery – especially with regard to the power supply.
- Do not make any modifications to the BRConnect.
- Pay particular attention to running voltage-free string cables through the BRConnect during assembly to prevent electric shocks.

## END USER

- Under no circumstances should you carry out any work on the BRConnect yourself.
- Do not open the housing.
- Please keep the instruction manual so that it is available for all activities related to the product.

## PRODUCT OVERVIEW

### ASSEMBLY



1. LED
2. 24V DC connection
3. reset button
4. Lan ethernet socket

5. cable bushing of string 1
  - S1- Strang – / string –
  - S1+ Strang + / string +
6. cable bushing of string 2
  - S2- Strang – / string –
  - S2+ Strang + / string +
7. cable bushing of string 3
  - S3- Strang – / string –
  - S3+ Strang + / string +






## INTENDED USE



- The BRConnect is a gateway which, in combination with the M600-M and the BRC Power Manager, is used for data monitoring of the photovoltaic system at module level. Data from the M600-M is communicated to the BRConnect using powerline communication via DC cables and processed there. The end user can view this data via the BRC Power Manager App, making it possible to monitor the photovoltaic system.
- In order to use the product as intended, a fixed installation is required, which must be carried out by a qualified electrician in accordance with the explanations under point 4.
- When setting up the BRConnect, please ensure compliance with the specified technical data. Pay particular attention to the following information:
  - The BRConnect is rated protection class IP40 and is therefore intended for indoor use. Please keep the device away from liquids, humidity and heat sources as well as direct sunlight.
  - The product is designed for operation at ambient temperatures of – 20°C to + 55°C.
  - The product is only approved for operation up to 2,000m above sea level.
- The BRConnect has Ethernet and WiFi interfaces to provide the data to the BRC Power Manager.

WiFi standard	WiFi 4; 802.11n
WiFi frequency range	2.4 GHz

- If the use deviates from the use explained here, this is considered improper use. The manufacturer assumes no liability for damage caused by improper use. The information in the limited product warranty applies (<https://brc-solar.de/downloads/>).

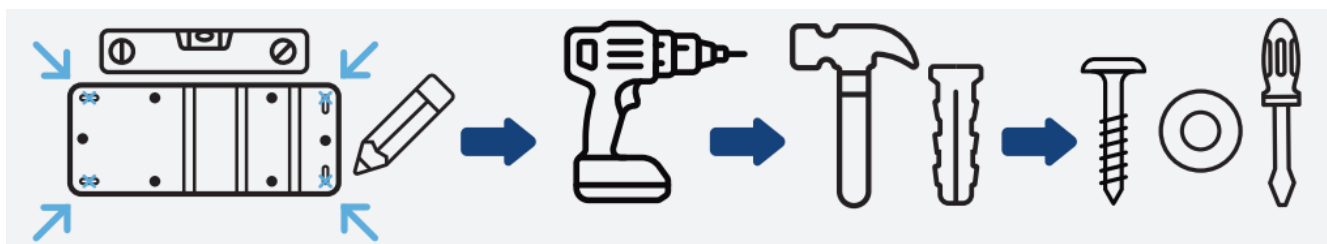
## LED OVERVIEW

LED signal	Explanation
No light	<i>BRConnect has no power supply or is defective, check <b>power supply</b>. Otherwise contact support hotline.</i>
lights up blue 	<i>Visible immediately after starting (approx. 7-8 sec), then switches to Bluetooth connection mode and can be seen again as <b>normal state</b> after successful setup via Power Manager App.</i>
Slowly flashes blue 	<i><b>Waiting for Bluetooth connection</b> with mobile phone/tablet. Open Power Manager App, follow the app instructions (see page 8) up to step 6.</i>  <i>Now the search for BRConnect is running = flashing frequency 1 second on, 1 second off.</i>
lights up green 	<i><b>Bluetooth connection with mobile phone/tablet established.</b> Set string information in Power Manager App. Enter the IP addresses and WiFi settings via the Power Manager App or plug in the Ethernet cable.</i>
Slowly flashes green 	<i><b>Establishing connection to local network</b> (no action necessary, check local network connection if the status persists) = flashing frequency 1 second on, 1 second off.</i>
Quickly flashes green 	<i><b>Network connection active</b>, establishing connection to cloud (no action necessary, check internet connection if the status persists) = flashing frequency 200ms on, 200ms off.</i>

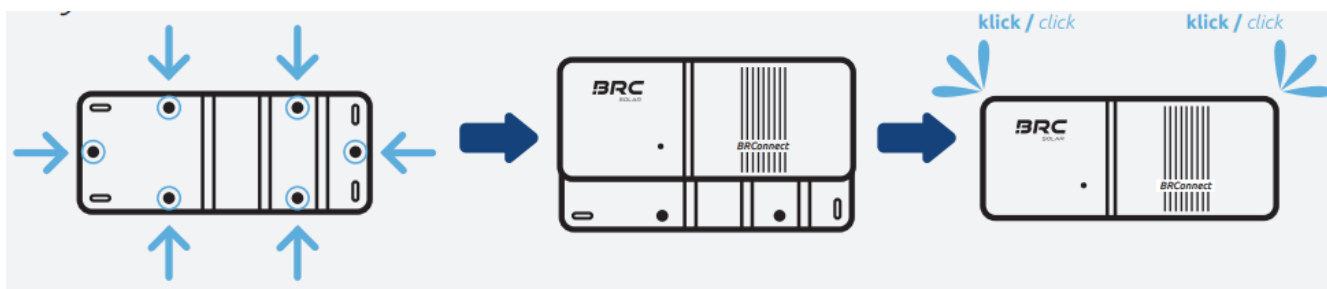
<p>Lights up yellow</p> 	<p><b>Warning</b>, functionality limited, please disconnect BRConnect from the power supply and reconnect it to restart.</p> <p>If the signal persists, please contact support.</p>
<p>Lights up red</p> 	<p><b>Error</b>, BRConnect may be defective. Please disconnect BRConnect from the power supply and reconnect it to restart.</p> <p>If the signal persists, please contact support.</p>

## INSTALLATION

1. Attach the wall mount: Mark the position with a pencil and spirit level, drill 4 holes (size 6mm) and sink 4 dowel pins, mount the wall mount with 4 screws, washers and a screwdriver.



2. Clip BRConnect onto the designated pins of the wall mount: To do this, press evenly on both sides until you hear a click.



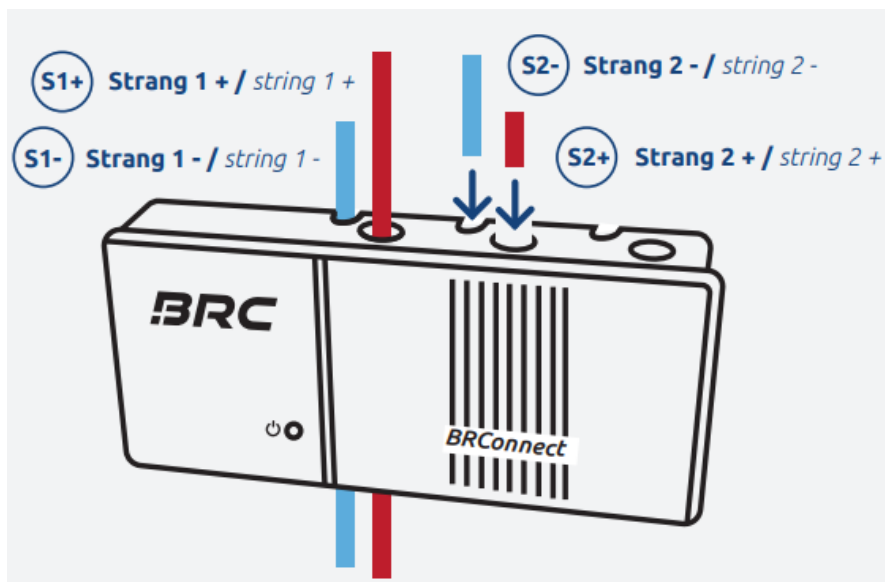
3. Pass string cable through cable bushing: Make sure that the string cable is voltage-free when passing through.

Pay attention to the correct connection arrangement of the string cables, otherwise errors or inoperability may occur.

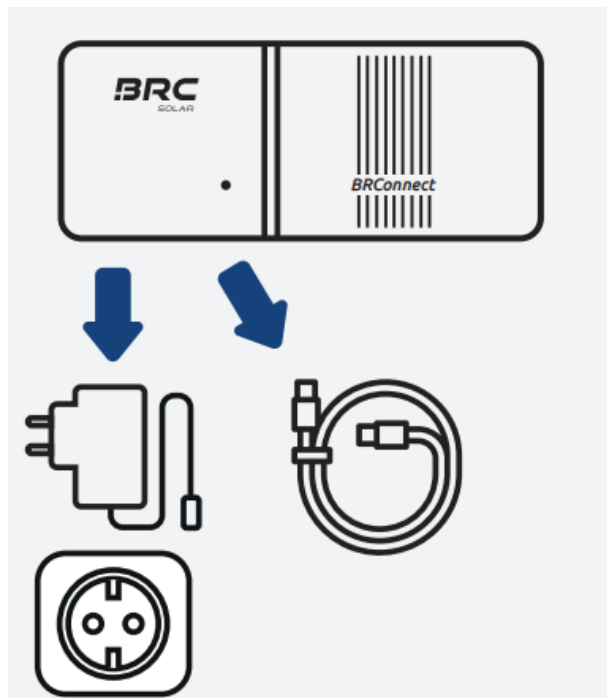
Connect the string cable to the inverter with DC-switch off: Pay attention to correct polarity.

Connect the string cable to the PV system, then switch on the DC-side of the inverter.



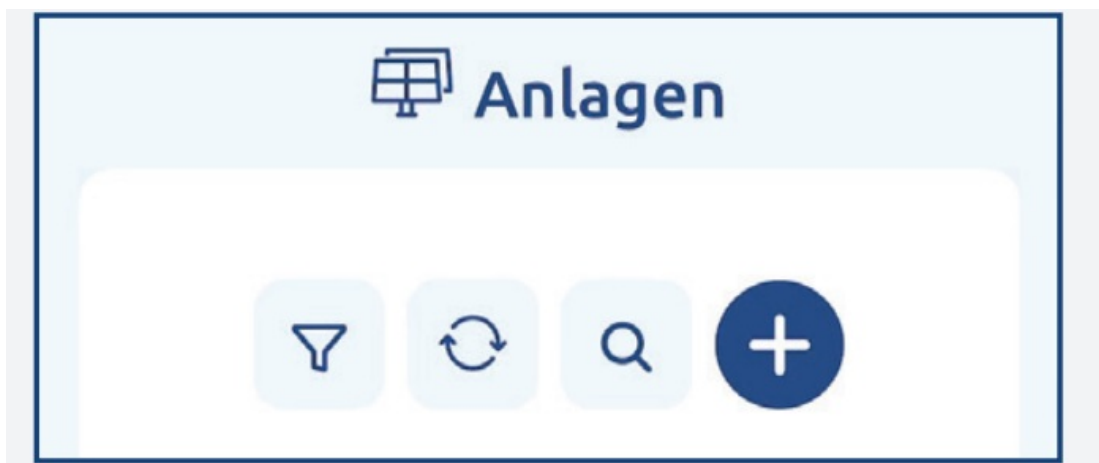


4. Connect 24V and Ethernet: BRConnect LED lights up briefly in blue, then flashes slowly in blue and waits for Bluetooth connection.



## POWER MANAGER APP

1. Install App: Available on App Store and Play Store.
2. Register, log in, and click the plus symbol to set up a new plant. Internet connection is required for this.



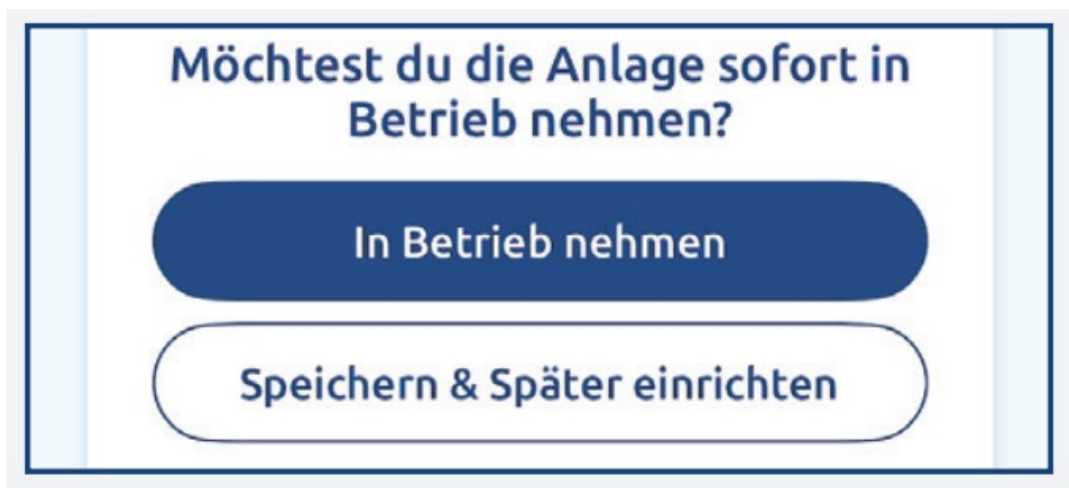
3. Fill in general information and owner information.

<h3> Allgemeine Angaben</h3> <p>Anlagenname*</p> <hr/> <p>Alias Name*</p> <hr/> <p>Straße*</p> <hr/>	<div>  Eigentümer hat der Datenhinterlegung zugestimmt*         </div> <h3> Eigentümer der Anlage</h3> <p>Auftragsnummer</p> <hr/> <p>E-Mail</p> <hr/>
--	--

4. Enter solar module and inverter data and select whether a battery storage or a wallbox is integrated.

<h3> Komponenten</h3> <div> <b>Solarmodul</b> </div> <p>Hersteller*</p> <hr/> <p>Typ*</p> <hr/>	<div> <b>Batteriespeicher</b> </div> <p>Ist ein Batteriespeicher vorhanden?</p> <p> <input type="radio"/> Ja         <input type="radio"/> Nein       </p> <p>Hersteller*</p> <hr/> <p>Typ*</p> <hr/> <p>Kapazität in kWh</p> <hr/>
<div> <b>Wechselrichter</b> </div> <p>Hersteller*</p> <hr/> <p>Typ*</p> <hr/>	<div> <b>Wallbox</b> </div> <p>Ist eine Wallbox vorhanden?*</p> <p> <input type="radio"/> Ja         <input type="radio"/> Nein       </p>

5. Select Start configuration to continue the setup, or Save & configure later.



The optimizers must already be installed, and the BRConnect must be powered for further setup.

- BRConnect automatically waits for Bluetooth connection after starting. Select the BRConnect via the app and connect.



- Enter how many optimizers (M600-M) are connected per string.



- Connect the BRConnect to the internet via WiFi or Ethernet. The app will then search

for the available optimizers.

### Netzwerk

Netzwerkeinstellungen fest...

Bitte hinterlege die Netzwerkeinstellungen und WLAN-Konfiguration für dein BRConnect.

☒

 IP Adresse automatisch beziehen

☐

 Folgende IP Adresse verwenden:

WLAN-Konfiguration

WLAN SSID

WLAN Passwort

Abbrechen

Weiter >

### Optimierer suchen

String 1:  
Optimierer: 0 von 7 gefunden

String 2:  
Optimierer: 0 von 7 gefunden

String 3:  
Optimierer: 0 von 7 gefunden

Suche nach Optimierern läuft

Dieser Schritt kann bis zu 10 Minuten dauern.

9. Create a string plan using drag & drop and place the optimizers.

Erstelle den Stringplan für dein BRConnect.

Bitte erstelle den Stringplan per Drag and Drop mit Long-Klick. Eingefügte Optimierer können durch Doppelklick wieder entfernt werden.

String 1

FFF1 AA00

FFF1 AA01

FFF1 AA02

FFF1 AA03

FFF1 AA04

FFF1 AA05

Erstelle den Stringplan für dein BRConnect.

Bitte erstelle den Stringplan per Drag and Drop mit Long-Klick. Eingefügte Optimierer können durch Doppelklick wieder entfernt werden.

String 1

FFF1 AA04

FFF1 AA05

FFF1 AA06

FFF1 AA07

FFF1 AA08

FFF1 AA00

FFF1 AA01

FFF1 AA02

FFF1 AA03

FFF1 AA04

10. Successful completion of the setup.



## OPERATION AND MAINTENANCE

Only clean the BRConnect with a dry, lint-free cloth. Do not use cleaning agents or solvents. The BRConnect is maintenance-free; If a problem persists, contact support.

## REPLACEMENT AND REPAIR

- The steps for dismantling the BRConnect must be carried out in the reverse order of installation (see Chapter 4):
  - Switch off the DC-side of the inverter.
  - Ensure that the string cables are voltage-free.
  - Remove the power supply to disconnect the BRConnect from the circuit. Remove the Ethernet cable.
  - Release the string cables from the cable bushings.
  - Dismount the BRConnect by evenly removing it straight from the wall mount.
- Repairs must not be carried out.

## DISPOSAL

- The transport packaging can be recycled under local waste disposal.
- After use, the BRConnect and all associated components are to be disposed of as electronic waste in accordance with the laws applicable in the country.

## PRODUCT COMPLIANCE AND CONTACT

BRC Solar GmbH, located at Gehrstraße 7 in D-76275 Ettlingen, Germany, declares that the product BRConnect complies with the basic requirements of the national

directives if the installation instructions are observed and the product is used as intended. A complete declaration of conformity can be found on the website ([www.brc-solar.de](http://www.brc-solar.de)) of BRC Solar GmbH.

## Power Manager App



Instruction manual BRConnect Gateway

## Newsletter Anmeldung



[www.brc-solar.de](http://www.brc-solar.de)

## FAQ


- Q: Can I open the housing of BRConnect myself?

A: Under no circumstances should you carry out any work on the BRConnect yourself or open its housing as it may lead to damage or improper functioning. Always refer to the instruction manual for any related activities.

- **Q: What should I do if there are errors during installation?**

A: If errors occur during installation, double-check the connection arrangement of string cables and ensure correct polarity when connecting to the inverter. Refer to the video instructions for further assistance.

## Documents / Resources

	<a href="#">BRC Solar BRConnect Monitoring Gateway [pdf]</a> User Guide V1.0.3, BRConnect Monitoring Gateway, BRConnect, Monitoring Gateway , Gateway
---	---

## References

- [User Manual](#)

■ BRC  
SOLAR

◆ BRC SOLAR, BRConnect, BRConnect Monitoring Gateway, gateway, Monitoring Gateway,  
v1.0.3

---

## Leave a comment

Your email address will not be published. Required fields are marked \*

Comment \*

Name

Email

Website

☐ Save my name, email, and website in this browser for the next time I comment.

Post Comment

Search:

e.g. whirlpool wrf535swhz

Search

[Manuals+](#) | [Upload](#) | [Deep Search](#) | [Privacy Policy](#) | [@manuals.plus](#) | [YouTube](#)

This website is an independent publication and is neither affiliated with nor endorsed by any of the trademark owners. The "Bluetooth®" word mark and logos are registered trademarks owned by Bluetooth SIG, Inc. The "Wi-Fi®" word mark and logos are registered trademarks owned by the Wi-Fi Alliance. Any use of these marks on this website does not imply any affiliation with or endorsement.