



BRAYER BR1201 Table Top Blender Instruction Manual

[Home](#) » [BRAYER](#) » BRAYER BR1201 Table Top Blender Instruction Manual 

Contents

- 1 BRAYER BR1201 Table Top Blender
- 2 TABLE TOP BLENDER BR1201
- 3 DESCRIPTION
- 4 SAFETY MEASURES AND OPERATION RECOMMENDATIONS
- 5 THE UNIT IS INTENDED FOR HOUSEHOLD USAGE ONLY
 - 5.1 BEFORE THE FIRST USE
- 6 USING THE BLENDER
- 7 USING THE CONTAINER
- 8 CHOPPER BOWL (10)
- 9 CLEANING AND MAINTENANCE
- 10 REMOVING AND INSTALLING THE KNIFE BLOCK
- 11 STORAGE
 - 11.1 DELIVERY SET
- 12 TECHNICAL SPECIFICATIONS
- 13 Documents / Resources
 - 13.1 References
- 14 Related Posts



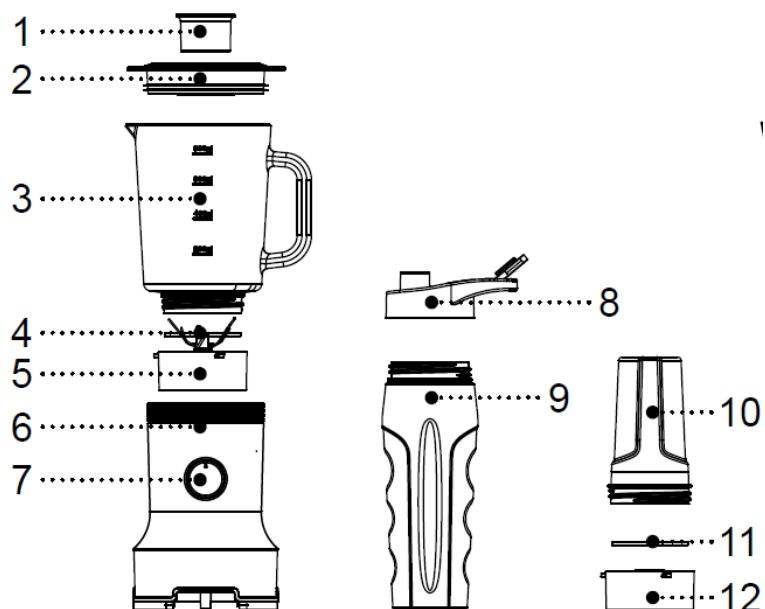
BRAYER BR1201 Table Top Blender



TABLE TOP BLENDER BR1201

The blender is intended for chopping/mixing products or making cocktails.

DESCRIPTION



1. Measuring cup
2. Blender bowl lid
3. Blender bowl
4. Sealing gasket
5. Knife block
6. Motor unit body

7. Operation mode switch P-0-1-2
8. Removable container lid
9. Container
10. Chopper bowl
11. Sealing gasket
12. Chopper knife block

SAFETY MEASURES AND OPERATION RECOMMENDATIONS

- Use the unit for its intended purpose only, as specified in this manual.
- Mishandling the unit can lead to its breakage and cause harm to the user or damage to his/her property and it is not covered by warranty.
- Make sure that the operating voltage of the unit indicated on the label corresponds to your home mains voltage.

ATTENTION

Continuous operation time of the blender should not exceed 30 seconds, after that make at least 1 minute break.

- Place and use the unit on a flat dry and steady surface.
- Use only the blender parts supplied with the unit.
- Put the products in the blender bowl before switching the unit on.
- Do not switch the unit on if the blender bowl is empty.
- Cool down hot products before putting them into the blender bowl.
- Watch the amount of products put in the blender bowl and the level of poured liquids.
- Before using the unit make sure that the blender bowl is installed properly.
- Do not switch the unit on without the blender bowl lid installed.
- The cutting edges of the knife block are very sharp and dangerous.
- Handle the knives carefully when removing the processed products from the blender bowl and during cleaning the bowl.
- If the knives stop rotating during the unit operation, switch the unit off, unplug it and open the blender bowl lid, remove the product which is hindering the knives rotation.
- If the knives rotation is hindered, it is recommended to add some water, juice, liquor etc. into the blender bowl.
- Remove products from the chopper bowl and pour out liquids from the blender bowl, remove the blender bowl, the container and the chopper bowl from the motor unit only after you switch off and unplug the unit.
- Do not use the unit outdoors.
- It is not recommended to use the unit during lightning storms.
- Protect the unit from impacts, falling, vibrations and other mechanical stress.
- Never leave the plugged in unit unattended.
- Do not use the unit near heating appliances, heat sources or open flame.
- Do not use the unit in places where aerosols are used or sprayed and close to inflammable liquids.
- Do not use the unit in proximity to the kitchen sink, in bathrooms, near swimming pools or other containers filled with water.
- If the unit is dropped into water, unplug it immediately, and only then you can take the unit out of water.
- Do not let the power cord touch hot surfaces and sharp edges of furniture.
- Unplug the unit after usage or before cleaning. When unplugging the unit, hold the power plug and carefully

remove it from the mains socket, do not pull the power cord, as this can lead to its damage and cause a short circuit.

- Do not touch the mixer body, the power cord and the power plug with wet hands.
- For child safety reasons do not leave polyethylene bags used as packaging unattended.

ATTENTION

Do not allow children to play with polyethylene bags or packaging film. Danger of suffocation.

- The unit is not intended for usage by children.
- Do not leave children unattended to prevent using the unit as a toy.
- Do not allow children to touch the operating surface, unit body, power cord or power plug during operation of the unit.
- Close supervision is necessary when children or disabled persons are near the operating unit.
- During the unit's operation and breaks between operation cycles, place the unit out of reach of children.
- The unit is not intended for usage by physically or mentally disabled persons including children or by persons lacking experience or knowledge if they are not under supervision of a person who is responsible for their safety or if they are not instructed by this person on the usage of the unit.
- Regularly check the integrity of the power cord.
- If the power cord is damaged, it should be replaced by the manufacturer, a maintenance service or by similar qualified personnel, to avoid danger.
- Do not repair the unit by yourself.
- Do not disassemble the unit by yourself; in case of any malfunction or if the unit is dropped, unplug it and apply to the service center.
- To avoid damages, transport the unit in original package only.
- Keep the unit in a dry cool place out of reach of children and disabled persons.

THE UNIT IS INTENDED FOR HOUSEHOLD USAGE ONLY

BEFORE THE FIRST USE

After the unit's transportation or storage at negative temperature, unpack it and wait for 3 hours before using it.

- Unpack the unit and remove all the packaging materials.
- Keep the original package.
- Check the delivery set.
- Examine the unit for damages; if the unit is damaged, do not plug it into the mains.
- Make sure that the indicated specifications of the power supply voltage of the unit correspond to the specifications of your mains.
- When the unit is powered from 60 Hz frequency mains, no additional actions are necessary.
- Remove the lid (2) and remove the measuring cup (1).
- Wash the bowl (3), the lid (2), the measuring cup (1), the lid (8) and the container (9) with warm water and neutral detergent, rinse and dry them.
- The cutting edges of the knife block (5) are sharp and can be dangerous, handle the knife block (5) carefully.
- Take the chopper bowl (10), turn the knife block (12) counterclockwise, remove the knife block (12) and the gasket (11).

- Wash the chopper bowl (10), the knife block (only from the knives side) (12) and the gasket (11) with warm water and neutral detergent, rinse and dry.
- Clean the motor unit body (6) with a soft, slightly damp cloth, and then wipe it dry.
- Do not immerse the unit, the power cord and the power plug of the unit into water or other liquids.

USING THE BLENDER

The blender is used for chopping products, crushing ice, mixing various ingredients and making cocktails.

ATTENTION

Continuous operation time of the blender should not exceed 30 seconds, after that make at least 1 minute break.

Note

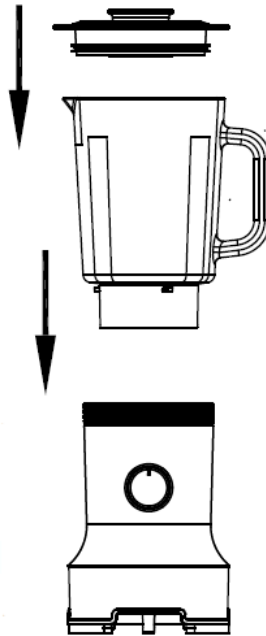
- When using the unit for the first time, a foreign smell from the electric motor can appear this is normal and it is not covered by warranty.
- Place the blender on a flat dry and steady surface.
- Place the blender bowl (3) on the motor unit (6) and turn it clockwise until bumping.
- Put the necessary ingredients into the bowl (3).
- Cover the bowl (3) with the lid (2).
- Insert the measuring cup (1) into the lid (2) opening.
- Note the blender is not intended for beating eggs, making potato mash, kneading dough, extracting fruit or vegetable juice, crushing hard or frozen products, chopping meat and meat products the amount of food for processing should not exceed 2/3 of the capacity of the bowl (3) and should not be below the minimal mark «200» ml on the bowl (3) use the scale on the bowl (3) to control the amount of products to process before starting to chop/mix, we recommend to peel fruit, remove stones, and cut fruit into 2x2 cm cubes.
- Make sure once again that the blender bowl (3) is installed correctly and is fixed
- Insert the power plug into the socket
- Note the blender will not be switched on if the bowl (3) is installed incorrectly.
- Use the operation mode switch (7) to set the required rotation speed of the knives 1 low speed for mixing liquid products 2 high speed for liquid and hard products.
- P pulse mode. To switch the pulse mode on.

USING THE CONTAINER

ATTENTION

Do not put hot products or carbonated drinks in the container (9)

- Remove the knife block (5) from the blender bowl (3), to do this, turn it counterclockwise.
- Notes the amount of the processed products should not exceed 2/3 of the container (9) capacity before starting to chop/mix, we recommend to peel fruit, remove stones, and cut fruit into 1x1 cm cubes. if food processing is hindered, you can add some water, liquor or juice etc. into the container (9)
- Put the necessary ingredients into the container (9).
- Install the sealing gasket (4) on the knife block (5), install the knife block (5) on the container (9) and turn it clockwise



- To avoid damage of the sealing gasket (4) when turning the knife block (5), do not apply excessive effort.
- Install the container (9) on the motor unit (6), slightly press on it and turn it clockwise until bumping.
- Use the operation mode switch (7) to set the required rotation speed of the knives 1 low speed for mixing liquid products 2 high speed for liquid and hard products
- P pulse mode.
- To switch the pulse mode on, turn the switch (7) to the position P and hold it.

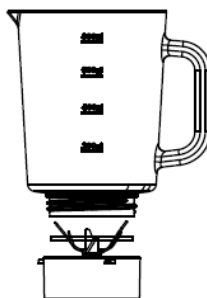
ATTENTION

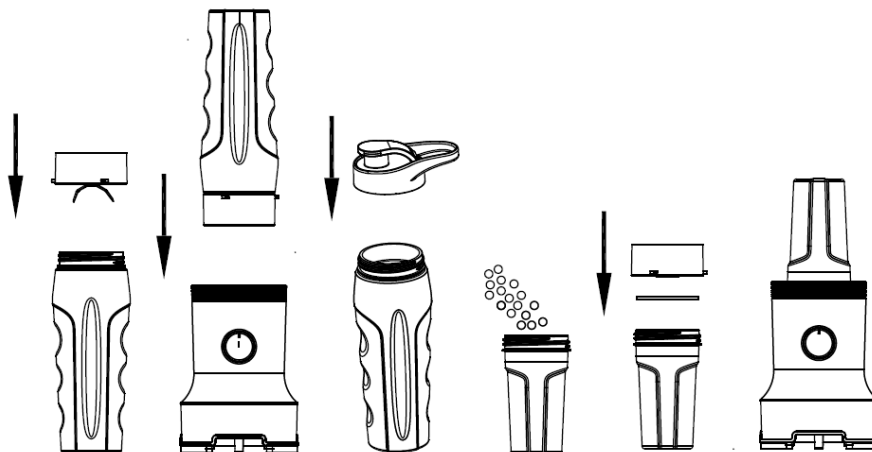
Continuous operation time should not exceed 30 seconds, after that make at least 1 minute break. After the unit operation is finished, set the operation mode switch (7) to the 0 position and unplug the unit. Remove the container (9) from the motor unit (6) by turning it counterclockwise. Remove the knife block (5) from the container (9) turning the knife block (5) counterclockwise. Place the lid (8) on the container (9) turning it clockwise (pic. 5) and put the container (9) away for storage in the fridge or use it for the intended purpose. Wash the knife block (5) (only from the knives side) and the sealing gasket (4) with warm water and neutral detergent, rinse them and dry.

ATTENTION

The knives (5) are sharp and dangerous. Handle the knives (5) carefully.

CHOPPER BOWL (10)





- You can use the chopper bowl (10) as a coffee grinder.
- Remove the knife block (12) from the chopper bowl (10), to do this turn the knife block (12) counterclockwise.
- Put the coffee beans into the bowl (10), maximal weight of the coffee beans is 60 g.
- Install the sealing gasket (11) on the knife block (12), install the knife block (12) on the bowl (10) and turn it clockwise.
- To avoid damage of the sealing gasket (11) when turning the knife block (12), do not apply excessive effort.
- Install the bowl (10) on the motor unit (6), slightly press on it and turn it clockwise until bumping.
- Use the pulse mode to grind coffee beans
- To switch the pulse mode on, turn the switch (7) to the position P and hold it.

ATTENTION

Continuous operation time of the unit should not exceed 30 seconds. After the unit operation is finished, set the operation mode switch (7) to the 0 position and unplug the unit. Remove the bowl (10) from the motor unit (6) by turning it counterclockwise. Remove the knife block (12) from the bowl (10) turning the knife block (12) counterclockwise. Put the ground coffee into a suitable sealed container. Wash the knife block (12) (only from the knives side) and the sealing gasket (11) with warm water and neutral detergent, rinse them and dry.

CLEANING AND MAINTENANCE

After using the bowl (3) wash it preliminary, to do this pour some water into the bowl (3) and add some neutral detergent.

- Cover the bowl (3) with the lid (2) with installed measuring cup (1).
- Insert the power plug into the mains socket.
- Use the pulse mode to wash the bowl (3).
- To switch the pulse mode on, turn the switch (7) to the position P and hold it.
- After washing the bowl (3) set the operation mode switch (7) to the 0 position and unplug the unit.
- Remove the lid (2) from the bowl (3).
- Remove the bowl (3) from the motor unit (6) by turning it counterclockwise drain the washing solution, wash the bowl, rinse it and dry.
- Wash the measuring cup (1), the lid (2) with warm water and neutral detergent, rinse it and dry.

REMOVING AND INSTALLING THE KNIFE BLOCK

To remove the knife block (5) turn it counterclockwise. Remove the knife block (5) and the sealing gasket (4) from

the blender bowl (3).

ATTENTION

The knives (5) are sharp and dangerous. Handle the knives (5) carefully.

- Wash the knife block (5) (only from the knives side) and the sealing gasket (4) with warm water and neutral detergent, rinse them and dry.
- Wash the blender bowl (3) with warm water and neutral detergent, rinse and dry.
- Set the sealing gasket (4) on the knife block (5)
- Install the knife block (5) on the bowl (3), turn the knife block (5) clockwise (pic. 9).
- To avoid damage of the sealing gasket (4) when tightening the knife block (5), do not apply excessive effort.
- Wash the used parts of the blender (8, 9, 10) with warm water and neutral detergent, rinse and dry.
- Wash the knife block (12) (only from the knives side) and the sealing gasket (11) with warm water and neutral detergent, rinse them and dry.
- Clean the motor unit body (6) with a soft, slightly damp cloth, and then wipe it dry.
- Do not use abrasives and solvents to clean the motor unit body (6) and the removable parts.
- Do not immerse the motor unit body (6) into any liquids, do not put it and the removable parts in a dishwashing machine.

STORAGE

- Clean the unit before taking it away for storage.
- Keep the unit in a dry cool place out of reach of children and disabled persons.

DELIVERY SET

- Tabletop blender
- Container
- Container lid
- Chopper bowl assembled
- Manual

TECHNICAL SPECIFICATIONS


- Supply voltage: 220-240 V, ~ 50/60 Hz
- Rated input power: 450 W
- Blender bowl capacity: 0.8 l
- Container capacity: — 0.5 l
- Maximal weight of coffee beans: 60 g
- Maximal operation time: 30 seconds

RECYCLING

To prevent possible damage to the environment or harm to the health of people by uncontrolled waste disposal, after expiration of the service life of the unit or the batteries (if included) do not discard them with usual household waste, but take the unit and the batteries to specialized stations for further recycling. The waste generated during the disposal of the unit is subject to mandatory collection and consequent disposal in the prescribed manner. For

further information about recycling of this product apply to a local municipal administration, a disposal service or to the shop where you purchased this product. The manufacturer reserves the right to change the appearance, design and specifications not affecting general operation principles of the unit, without prior notice. The unit operating life is 3 years.

Documents / Resources

| | |
|---|---|
|  | BRAYER BR1201 Table Top Blender [pdf] Instruction Manual BR1201 Table Top Blender, BR1201, Table Top Blender, Table Blender, Blender |
|---|---|

References

- [BRAYER - официальный сайт австрийского бренда бытовой техники](#)