



BRAUN BC21 Alarm Clock with Wireless Fast-Charging Pad User Guide

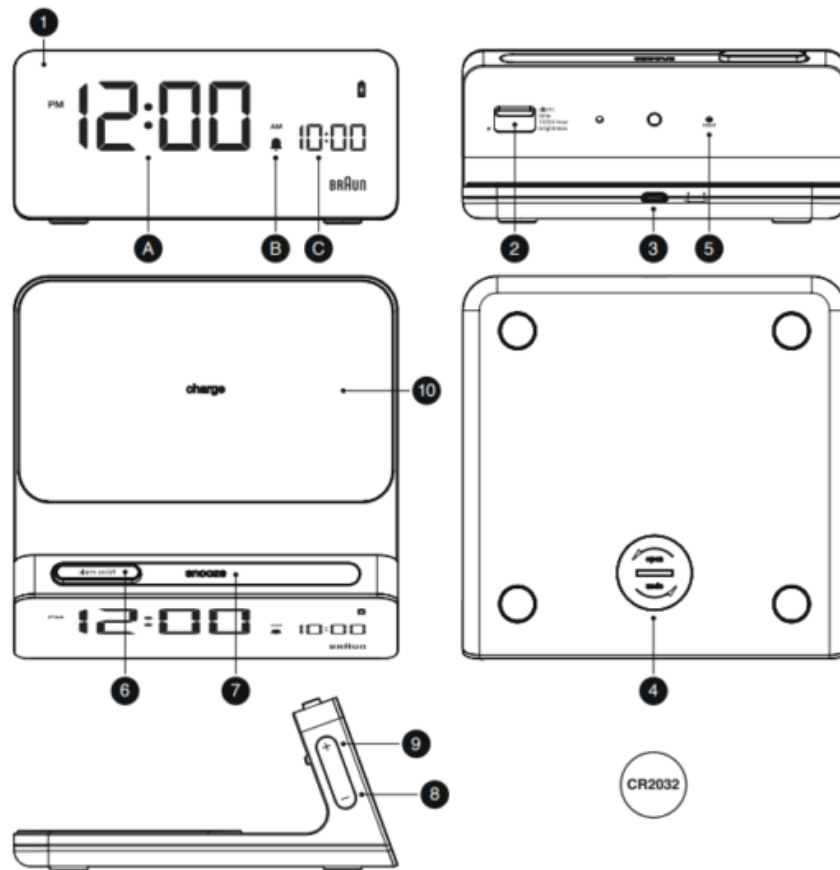
[Home](#) » [Braun](#) » BRAUN BC21 Alarm Clock with Wireless Fast-Charging Pad User Guide 

BRAUN

BC21

Alarm clock with wireless fast-charging pad





Contents

- [1 Battery precautions](#)
- [2 Getting started](#)
- [3 Product description](#)
- [4 Documents / Resources](#)
- [4.1 References](#)
- [5 Related Posts](#)

Battery precautions

1. Do not use rechargeable batteries.
2. Use only 3V, CR2032 battery of the same or equivalent type.
3. Insert batteries with the correct polarity.
4. Keep batteries away from children.
5. Dispose of exhausted batteries according to local legal requirements. Do not dispose of them by throwing them away with normal household rubbish.
6. Avoid short-circuiting the contacts in the battery compartment and battery terminals.
7. Remove batteries from the unit if it will not be used for a long period of time.
8. Exhausted batteries should be removed from the battery compartment to prevent over-discharge, which can cause leakage and may cause damage to the clock.

Getting started

1. Remove the battery door.

2. Take out the button cell battery and remove the plastic strip.
3. Replace the button cell battery for time backup.
4. Close the battery door.
5. An AC/DC adapter is being used to power the clock, plug the adapter into the USB-C jack at the back of the clock.

Function keys

Alarm/time/12/24 hour/brightness switch

- Slide to the alarm position to set the alarm time
- Slide to the time position to set the clock time
- Slide to the 12/24 hour position to set the 12/24 hour format
- Slide to the brightness position to set the clock display brightness.

+ key

– In the alarm/time setting mode, press to increase the setting value. Press and hold to speed up the setting. In the 12/24 hour setting mode, press to switch between the 12/24 hour format. In the brightness mode, press to increase the clock display brightness.

– key

-In the alarm/time setting mode, press to decrease the setting value. Press and hold to speed up the setting. In the brightness mode, press to decrease the clock display brightness

ALARM ON/OFF button

– Press to turn the alarm on/off.

Snooze zone

-Touch to stop the alarm and activate the snooze function.

Reset button

– Press by using a pin to reset all values to default. In case of a malfunction, the unit has to be reset.

Product description

1. LCD display
2. Alarm/time/12/24 hour/brightness switch
3. USB-C
4. Backup Battery compartment
5. Reset button
6. Alarm ON/OFF button
7. Snooze zone
8. — key
9. + key
10. Wireless charging pad

Display symbols

- A. Time
- B. Alarm icon
- C. Alarm time
- D. Charging indicator

Setting the time

1. Slide the “ALARM / TIME / 12/24 HOUR / BRIGHTNESS” switch to the TIME position.
2. Press the “+” or “-” key to set the desired value. Press and hold to speed up the setting.
3. Slide the “ALARM / TIME / 12/24 HOUR / BRIGHTNESS” switch to the “BRIGHTNESS” position to return to normal display and save the setting.

Setting the alarm

1. Slide the “ALARM / TIME / 12/24 HOUR / BRIGHTNESS” switch to the ALARM position.
2. Press the “+” or “-” key to set the desired value. Press and hold to speed up the setting.
3. Slide the “ALARM / TIME / 12/24 HOUR / BRIGHTNESS” switch to the BRIGHTNESS position to return to the normal display and save the setting.

Setting the 12/24 hour format

1. Slide the “ALARM / TIME / 12/24 HOUR / BRIGHTNESS” switch to the 12/24 HOUR position
2. Press the “+” key to set the 12 or 24-hour format.
3. Slide the “ALARM / TIME / 12/24 HOUR / BRIGHTNESS” switch to the BRIGHTNESS position to return to normal display and save the setting.

Setting the clock display brightness

The clock will automatically adjust the display brightness depending on the surrounding level of light.

1. In a well-lit environment, slide the “ALARM / TIME / 12/24 HOUR / BRIGHTNESS” switch to the BRIGHTNESS position.
2. Press the “+” or “-” key to set the desired brightness.
3. In a dark environment (or by covering the sensor), slide the “ALARM / TIME / 12/24 HOUR / BRIGHTNESS” switch to the BRIGHTNESS position.
4. Press the “+” or “-” key to set the desired brightness.

Using the alarm and snooze function

1. Activate the alarm by pressing the “ALARM ON/OFF” button.
The bell icon “ ” will appear on the LCD display.
2. Press the SNOOZE zone to stop the alarm and activate the snooze function. When the alarm sounds, the alarm icon will flash.
3. To de-activate the alarm and snooze function, press the ALARM ON/OFF button. The bell icon will disappear.

Note:

When the snooze function is activated, the alarm will automatically start again after 5 minutes. The snooze function will not stop unless you press the ALARM ON/OFF button to turn off the snooze.

Using the wireless charging function

Place your Qi-compatible device in the center of the wireless charging pad. The charging icon will appear on the LCD display when the device is charging. Note: The wireless charging function may not work with all phone cases.

For maximum charging efficiency, the device must be aligned with the center of the charging area, which is marked with 'charge' text. No metal case or foreign objects should be placed between the device and the charging pad.

Battery replacement




1. If the AC/DC adaptor is removed from the clock and plugged back in and the current time is not memorized, then the button cell battery must be replaced immediately.
2. It is recommended to replace the button cell battery once a year.

Guarantee

2-year guarantee against material and workmanship defects (except battery).

The guarantee is valid in those countries where the alarm clock is officially being sold. Broken or cracked lens screens are not covered under the Guarantee.

Precaution of using adaptor:

1. The AC/DC adaptor and apparatus should not be exposed to dripping or splashing and no objects filled with liquids should be placed on the AC/DC adaptor and apparatus.
2. When the AC/DC adaptor is used to disconnect the device. The AC/DC adaptor should not be obstructed and should be easily accessed during intended use. To completely disconnect the power input, the AC/DC adaptor should be disconnected from the mains
3. Rated power consumption of the LCD clock dc 9.0V 1.5A  or 5.0V 2.0A  so use the provided 9.0V dc 1.5A  adaptor for the LCD clock. 4. Battery should not be exposed to excessive heat such as sunshine, fire, or the like.

CAUTION: Danger of explosion if the battery is incorrectly replaced. Replace only with the same (CR2032) or equivalent type.

Braun helpline

Should you have a problem with your product, please check your local service center at:

www.braun-clocks.com

www.braun-watches.com or contact +44 208 208 1833



WARNING! This product is covered by the Waste Electrical and Electronic Equipment (WEEE) directive and the battery used in this item is covered by the Battery directive. It should not be discarded with normal household waste but taken to your local collection center for recycling.

Use this unit and mobile phone only in environments with ambient temperatures between 0°C and 40°C.

This device complies with Part 15 of the FCC rules. Operation is subject to the following two conditions: (1) This device may not cause harmful interference, and (2) This device must accept any interference received, including interference that may cause undesired operation.

WARNING! Changes or modifications to this unit not expressly approved by the party responsible for compliance could void the user's authority to operate the equipment.

NOTE: This equipment has been tested and found to comply with the limits for a Class B digital device, pursuant

to Part 15 of the FCC Rules. These limits are designed to provide reasonable protection against harmful interference in a residential installation. This equipment generates, uses and can radiate radio frequency energy and, if not installed and used in accordance with the instructions, may cause harmful interference to radio communications.

However, there is no guarantee that interference will not occur in a particular installation. If this equipment does cause harmful interference to radio or television reception, which can be determined by turning the equipment off and on, the user is encouraged to try to correct the interference by one or more of the following measures:



- Reorient or relocate the receiving antenna.
- Increase the separation between the equipment and the receiver.
- Connect the equipment into an outlet on a circuit different from that to which the receiver is connected.
- Consult the dealer or an experienced radio/TV technician for help.

We ZEON LIMITED UK, manufacturer of Braun Watches & Clocks under license from the Procter & Gamble Company hereby declare that model BC21 conforms with Directive 2014/53/EU. The full text of the EU Declaration of Conformity can be viewed on our website at www.braun-clocks.com

Zeon Ltd
Units 1 & 2 Phoenix Park
Apsley Way, London
England, NW2 7LN
© 2020 Zeon Ltd

Certain trademarks used under license from The Procter & Gamble Company or its affiliates.

Documents / Resources

	BRAUN BC21 Alarm Clock with Wireless Fast-Charging Pad [pdf] User Guide BC21, Alarm Clock with Wireless Fast-Charging Pad
	BRAUN BC21 Alarm Clock with Wireless Fast-Charging Pad [pdf] User Manual BC21, RYH-BC21, RYHBC21, BC21, Alarm Clock with Wireless Fast-Charging Pad, Alarm Clock, BC21, Clock

References

- clocks.com
- [Emit Collection | Buy Online Watches & Accessories Store](#)