

BRAUN AIO7 Built In Trimmer



BRAUN AIO7 Built In Trimmer Instruction Manual

[Home](#) » [Braun](#) » **BRAUN AIO7 Built In Trimmer Instruction Manual** 

Contents

- 1 BRAUN AIO7 Built In Trimmer**
- 2 Specifications**
- 3 Product Usage Instructions**
- 4 FEATURES AND PARTS**
- 5 BOX CONTENT**
- 6 CHARGING INSTRUCTIONS**
- 7 POWER ON/OFF FUNCTION**
- 8 CLEANING AND MAINTAINANCE**
- 9 Description**
- 10 FAQ**
- 11 Documents / Resources**
 - 11.1 References**

BRAUN

BRAUN AIO7 Built In Trimmer



Specifications

- **Product:** AIO7 Type 5807
- **Dimensions:** 105 x 210 mm
- **Pages:** 36 (including 4 cover pages)
- **Color:** 1/1c = Black

Product Information

The AIO7 Type 5807 is a versatile grooming tool designed for various trimming needs. It comes with multiple heads and combs to cater to different grooming requirements.

Product Usage Instructions

Charging the Device:

- Connect the power supply to the power socket on the charging stand.
- Place the device on the charging stand to charge. The indicator will show white when charging and red when the battery is low.

Changing Trimmer Heads:

To change trimmer heads, simply detach the current head from the device and replace it with the desired head.

Adjusting Comb Lengths:

1. Use the sliding beard and hair combs for adjustable lengths between 3-21mm.

2. Use the fix combs for precise lengths of 1 mm, 2mm, 3mm, and 5mm.

Additional Features:

The device comes with an eyebrow comb, detail comb, sensitive comb, fading beard combs, and fading hair combs for versatile grooming options.

FEATURES AND PARTS



7 Sliding beard comb
(3-11 mm)



8 Sliding hair comb
(13-21 mm)



9 Fix comb
(1 mm)



10 Fix comb
(2 mm)



11 Fix comb
(3 mm)



12 Fix comb
(5 mm)



13 Eyebrow comb



14 Detail comb



15 Sensitive comb



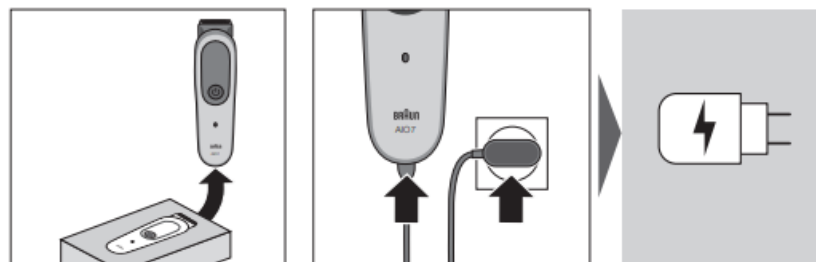
16 Fading beard combs
(1-5 mm / 5-1 mm)



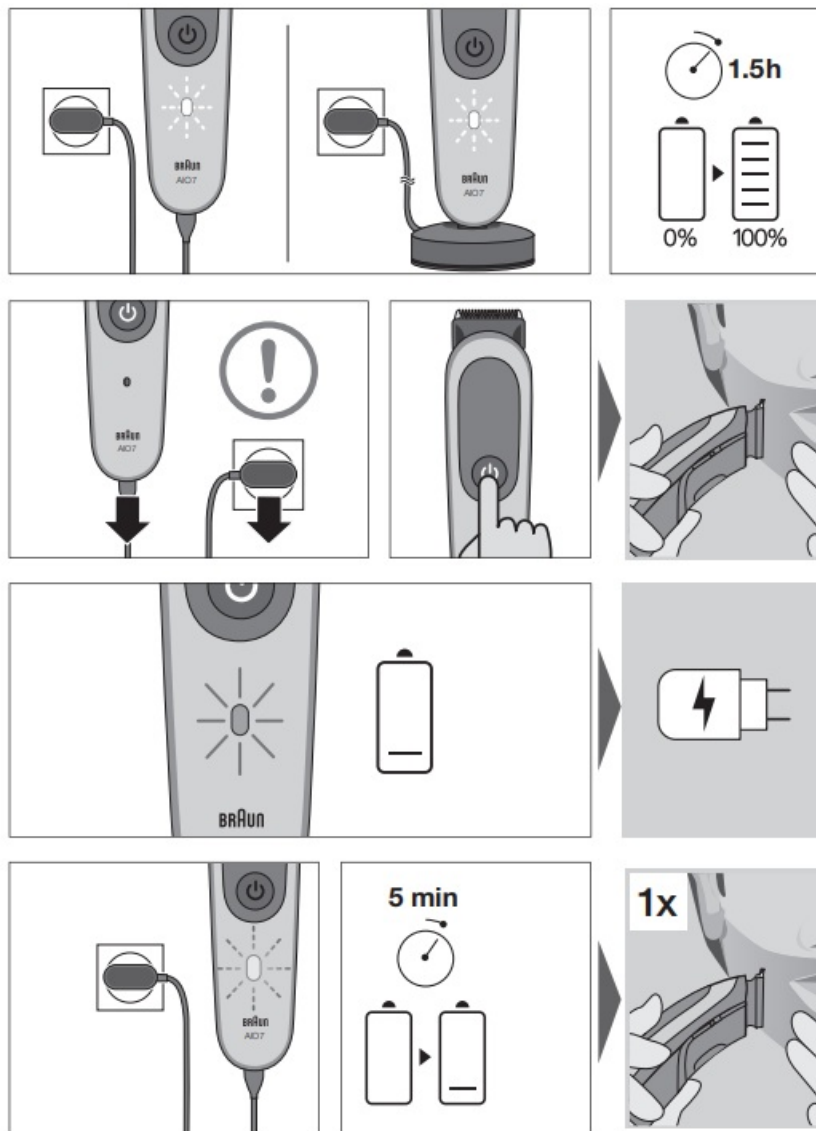
17 Fading hair combs
(5-9 mm / 9-5 mm)



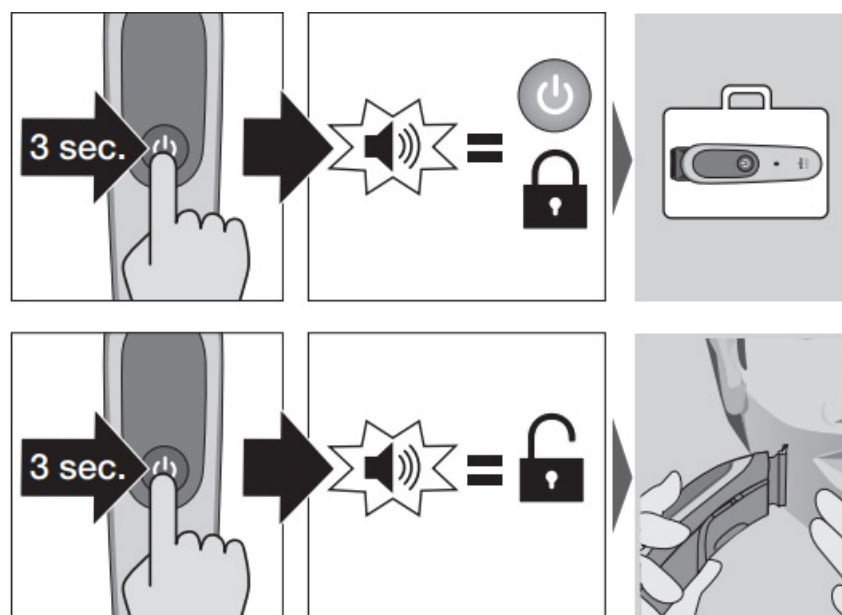
BOX CONTENT



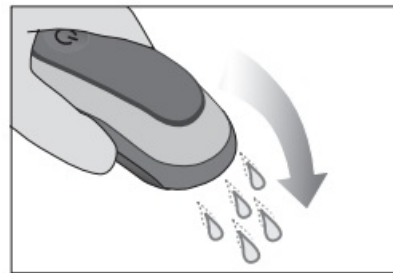
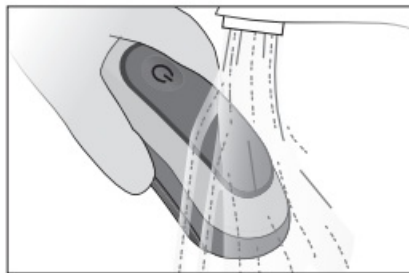
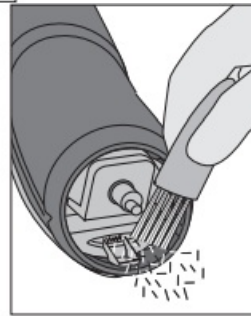
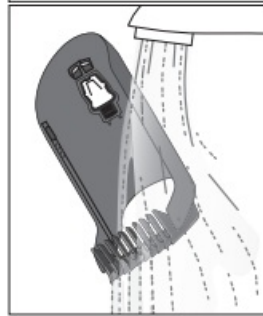
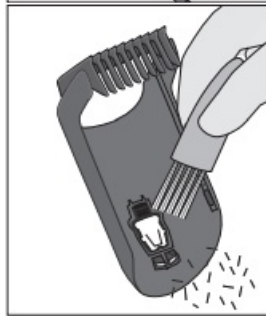
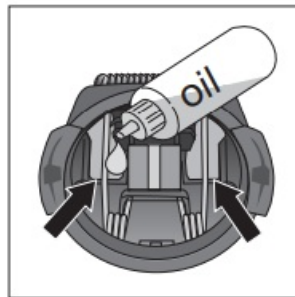
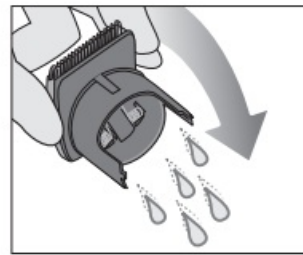
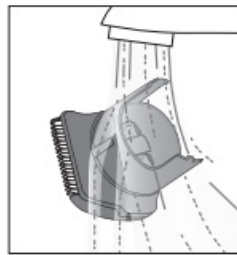
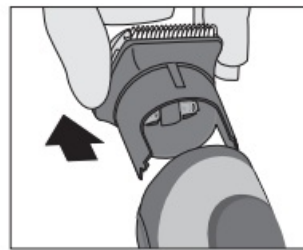
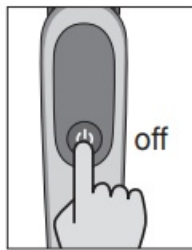
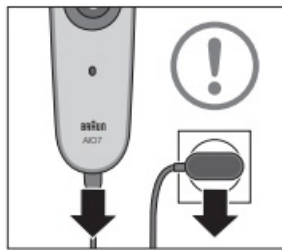
CHARGING INSTRUCTIONS

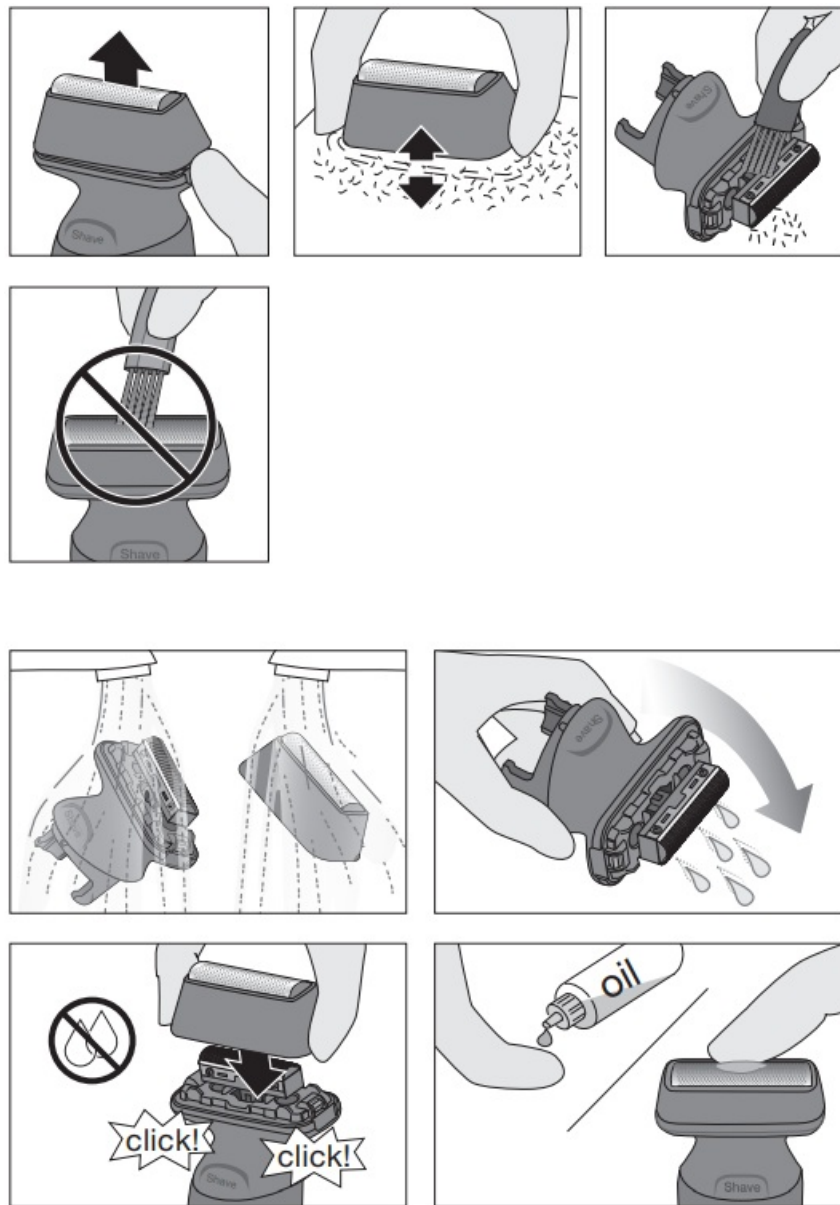


POWER ON/OFF FUNCTION



CLEANING AND MAINTAINANCE





Read these instructions completely, they contain safety information. Keep them for future reference.

Warnings

- This appliance is suitable for use in a bathtub or shower. For safety reasons this appliance can only be operated cordless.
- Detach the appliance from the power supply before using it with water.
- This appliance is provided with a Safety Extra Low Voltage plug-in power supply. To avoid risk of electric shock, do not exchange or tamper with any part of it.
- Only use with the provided power supply type 463-XXXX.
- Never use the appliance with any damaged accessory like trimmers, combs or power supply.
- Do not open the appliance!
- The built-in rechargeable batteries can only be replaced by an authorized Braun Service center.
- This appliance can be used by children aged from 8 years and persons with reduced physical, sensory or mental capabilities or lack of experience and knowledge if they have been given supervision or instruction concerning use of the appliance in a safe way
- and understand the hazards involved.
- If the appliance is provided with a hair clipping attachment, it can be used for hair clipping purpose by children

aged from 3 years under supervision.

- Children shall not play with the appliance. Cleaning and user maintenance shall not be made by children without supervision.
- For household use only.

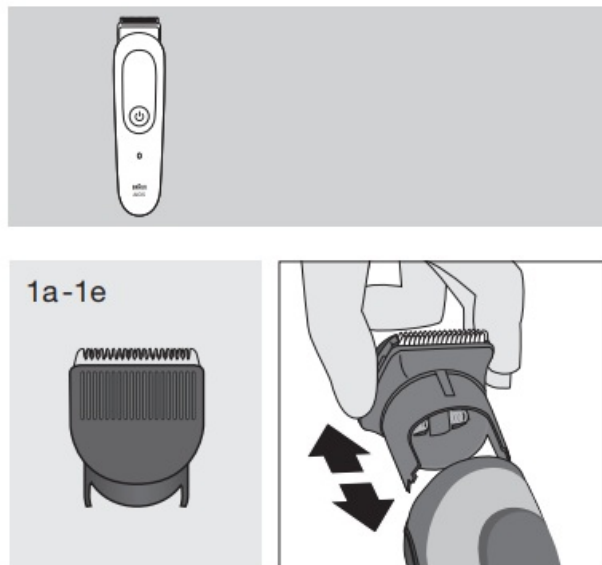
Caution

- Keep power supply and charging stand dry.
- The trimmer head / body trimmer head must only be used with comb attachment in delicate areas.
- Avoid introducing the ear & nose trimmer head more than 5 mm into nose or ear.
- The wide foil head must only be used on dry skin.

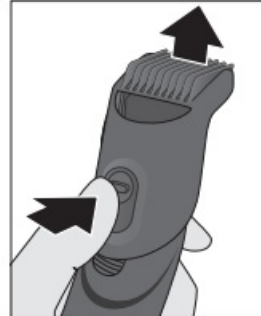
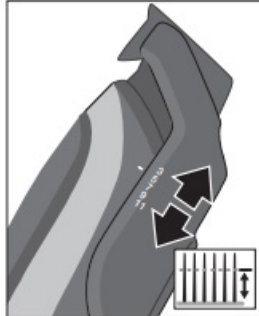
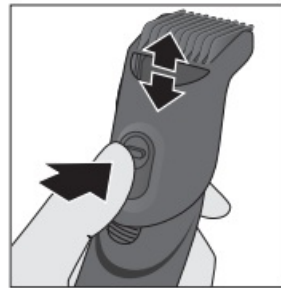
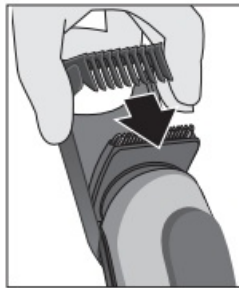
Important

- Recommended ambient temperature for charging is 5 °C to 35 °C.
- The battery may not charge properly or at all under extreme low or high temperatures.
- Recommended ambient temperature for trimming is 15 °C to 35 °C.
- Do not expose the appliance to temperatures higher than 50 °C for extended periods of time.
- To keep the attachments working properly, oil the trimmer and the foils with a drop of light machine oil (not included) regularly.

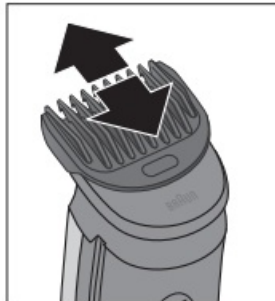
Description

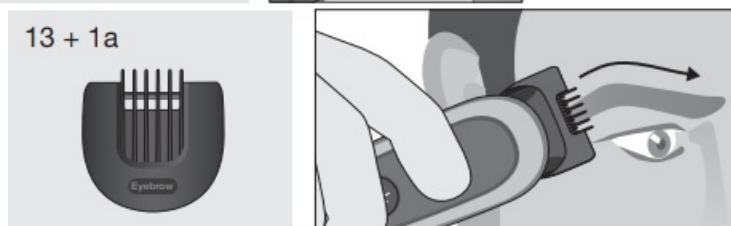
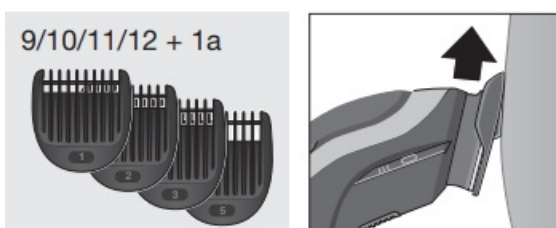
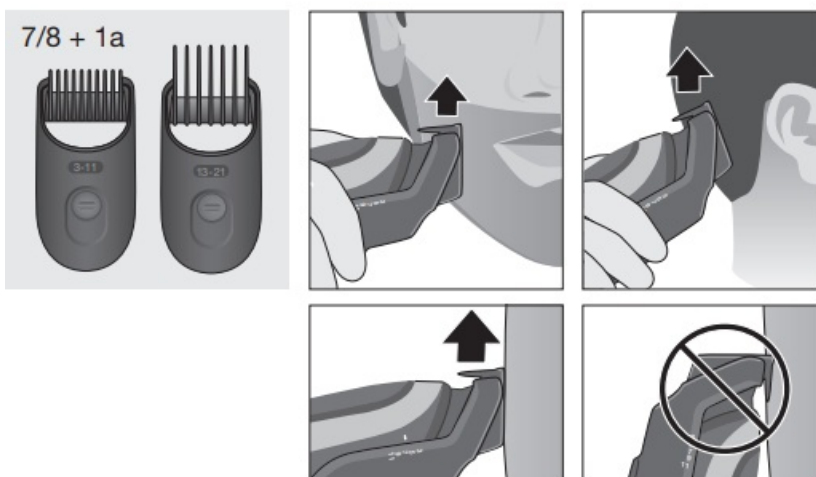
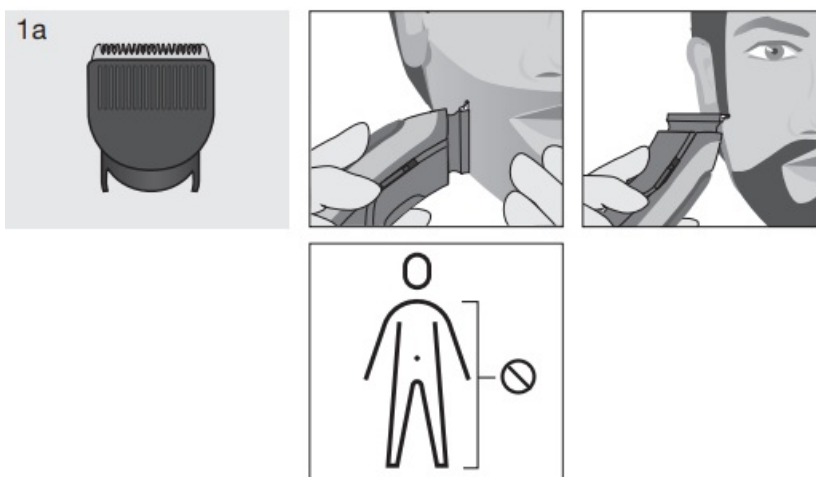


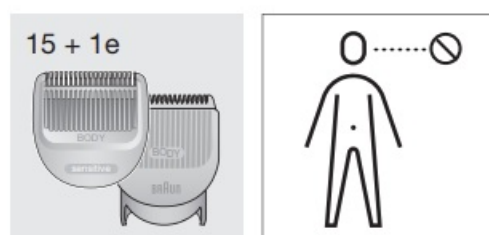
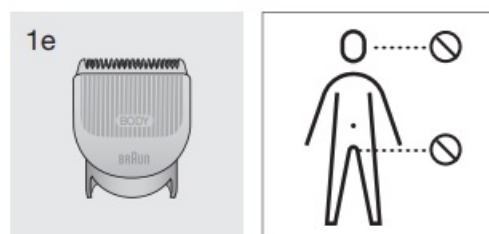
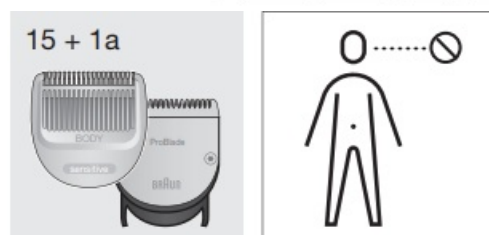
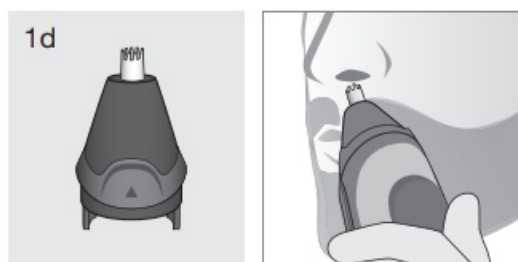
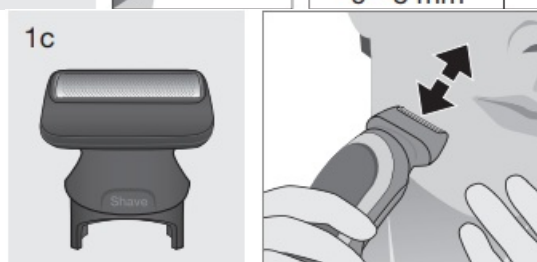
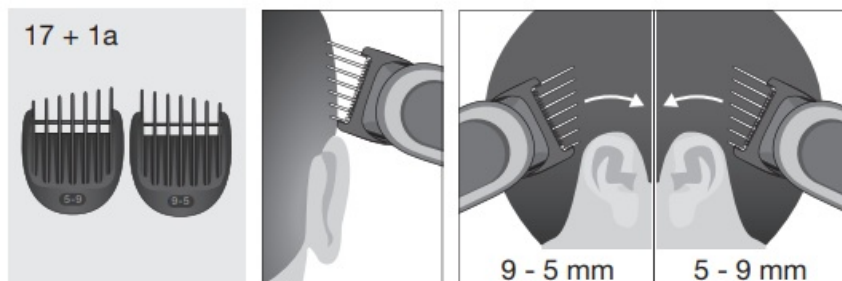
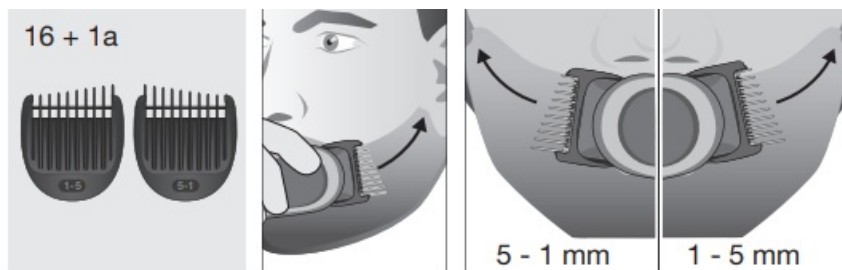
7/8 + 1a



9 - 17 + 1a/1e







- 1a Trimmer head
- 1b Detail trimmer head
- 1c Wide foil head
- 1d Ear & Nose trimmer head
- 1e Body trimmer head
- 2 On/off button Travel lock
- 3 Charging indicator
 - **white**: charging/battery charged
 - **red**: the battery is running low
- 4 Power socket
- 5 Power supply
- 6 Charging stand
- 7 Sliding beard comb (3-11mm)
- 8 Sliding hair comb (13-21mm)
- 9 Fix comb (1mm)
- 10 Fix comb (2mm)
- 11 Fix comb (3mm)
- 12 Fix comb (5mm)
- 13 Eyebrow comb
- 14 Detail comb
- 15 Sensitive comb
- 16 Fading beard combs (1-5 / 5-1 mm)
- 17 Fading hair combs (5-9 / 9-5 mm)

Accessories, features and design may vary by model.

Environmental notice

- Product contains batteries and/or recyclable electric waste. For environment protection do not dispose of in household waste, but for recycling take to electric waste collection points provided in your country.
- Subject to change without notice.
- For Australia & New Zealand only:
 - In Australia, our goods come with guarantees that cannot be excluded under the Australian Consumer Law. You are entitled to a replacement or refund for a major failure and for compensation for any other reasonably foreseeable loss or damage. You are also entitled to have the goods repaired or replaced if the goods fail to be of acceptable quality and the failure does not amount to a major failure.
 - The benefits given by this warranty are in addition to other rights and remedies of the consumer law.

For warranty claims please contact: Procter & Gamble Australia Pty Ltd Level 4, 1 Innovation Road Macquarie Park, NSW 2113

- **Telephone (AU):** 1 800 641 820
- **Telephone (NZ):** 0 800 108 909
- **Email (AU and NZ):** Visit link <https://pgconsumersupport.secure.force.com/ContactUs/emailus>

Our Warranty

- This appliance is also covered by a 24 Month Replacement Warranty commencing on the date of purchase (Our Warranty).
- Our Warranty applies in all States and Territories of Australia and in New Zealand and is in addition to any mandatory statutory obligations imposed on Procter & Gamble Australia Pty. Ltd., its distributors and its manufacturer. Our Warranty does not purport to exclude, restrict or modify any such mandatory statutory obligations.
- Our Warranty only covers defects in the appliance resulting from faults in workmanship or materials. Therefore, if your appliance becomes faulty as a result of faults in workmanship or materials, it will be exchanged by your retailer, on presentation of proof of purchase.
- Our Warranty only applies to domestic or household use of this appliance and the warranty will only apply if the correct operating instructions included with this product have been followed. For any appliance replaced under this warranty, Our Warranty ends on the expiry of the warranty period that applied to the original appliance.

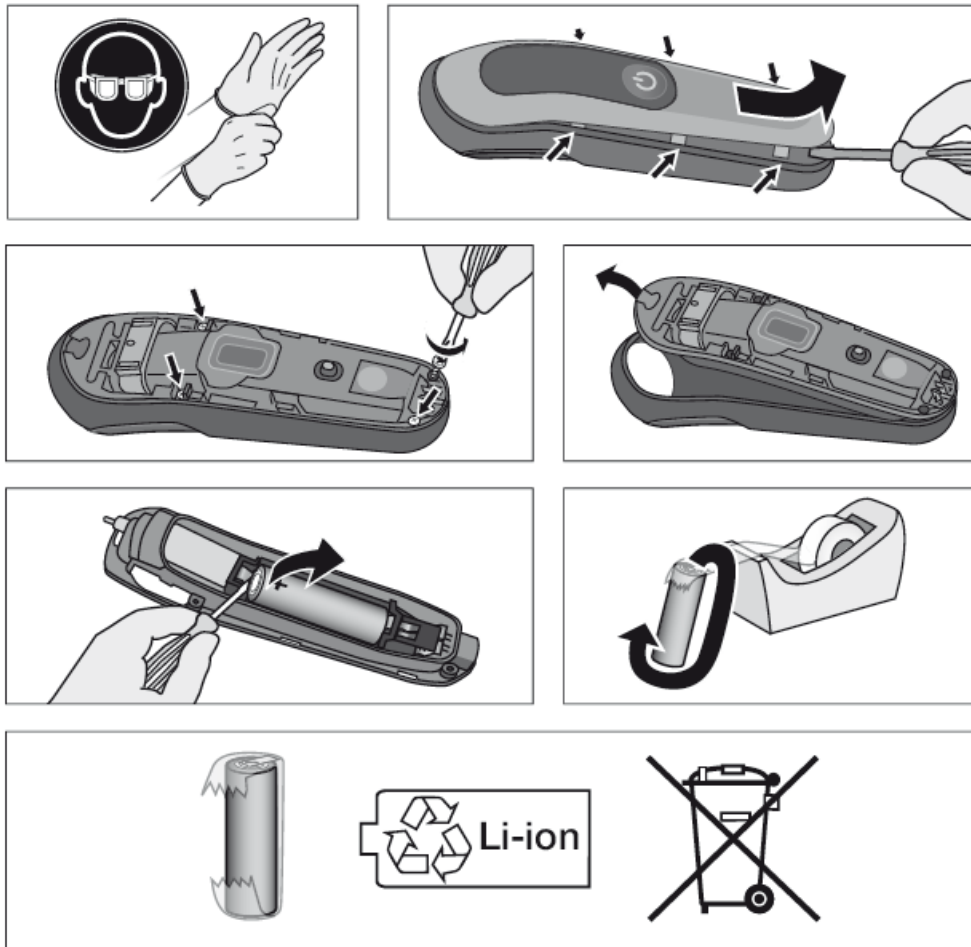
Our Warranty does not cover:

1. A. Damage arising from improper use or operation on incorrect voltages.
 2. B. Breakages to shaver foils, glass jars, etc.
 3. C. Normal wear due to moving parts.
 4. D. Repairs are undertaken by unauthorized service personnel or use of non genuine parts.
 5. Appliances that are outside the warranty period or are not faulty.
- This appliance is not intended for use by young children or infirm persons without supervision. Young children should be supervised to ensure that they do not play with the appliance.
 - If the appliance is powered by a cord extension set or electrical portable outlet device these should be positioned so they are not subject to splashing or ingress of moisture.
 - To the extent permitted by the laws of the Commonwealth of Australia and New Zealand and applicable laws of a State or Territory of Australia, and without affecting any mandatory statutory obligations imposed by law, Our Warranty is given in exchange for any other rights you may have against Procter & Gamble Australia Pty. Ltd. or its distributors or manufacturer, whether at law, in tort (including negligence), in equity or under statute.
 - Please retain proof of purchase of this appliance. If you have any questions in relation to Our Warranty, please call our Consumer Service line (see below for numbers). If you intend to make a claim please telephone our Customer Service line on the numbers set out below to obtain information about your claim and any costs associated with claiming under Our Warranty. You will bear the cost of returning your product to us.

Repairs and service

- If you are sending your appliance for repair under Our Warranty, please pack the appliance adequately and send it to your nearest Service Agent, at your expense. Should your Braun product require service, please call (free call) for Australia 1800 641 820 or
- New Zealand 0800 108 909 to be referred to the Authorized Braun Service Center closest to you or visit www.service.braun.com.

Only at the end of the product's useful life, disassemble the rechargeable battery for disposal reasons. This will destroy the appliance.



For guarantee, service, replacement parts and further product information, please refer to service.braun.com.

Scan Me!



Braun Infolines

- **DE / AT** 00 800 27 28 64 63 00 800 BRAUNINFOLINE
- **CH** 08 44 – 88 40 10
- **UK** 0800 783 7010
- **IE** 1 800 509 448
- **FR** 0 800 944 802 (service & appel gratuits)
- **BE** 0 800 14 592
- **ES** 900 814 208
- **PT** 800 200 766

- IT 800 440 017
- NL 0 800-445 53 88
- DK 70 15 00 13
- NO 22 63 00 93
- SE 020 – 21 33 21
- FI 020 377 877
- GR 800 801 3458
- HK (852)2986 9886

(Customer Service Center)

Type 5807

- Braun GmbH Frankfurter Strasse 145 61476 Kronberg/Germany
- www.braun.com
- www.service.braun.com

FAQ

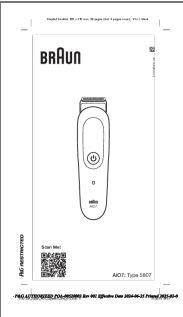
Q: Can I use the device in the shower?

A: No, this device is not waterproof. Avoid using it in wet conditions to prevent damage.

Q: How often should I replace the trimmer heads?

A: It is recommended to replace the trimmer heads as soon as you notice a decrease in performance or blade sharpness.

Documents / Resources

	<p>BRAUN AIO7 Built In Trimmer [pdf] Instruction Manual AIO7, Type 5807, AIO7 Built In Trimmer, AIO7, Built In Trimmer, Trimmer</p>
---	---

References

- [User Manual](#)

Manuals+, Privacy Policy

This website is an independent publication and is neither affiliated with nor endorsed by any of the trademark owners. The "Bluetooth®" word mark and logos are registered trademarks owned by Bluetooth SIG, Inc. The "Wi-Fi®" word mark and logos are registered trademarks owned by the Wi-Fi Alliance. Any use of these marks on this website does not imply any affiliation with or endorsement.