



bpt i10K GSM Intercom Installation Guide

[Home](#) » [bpt](#) » bpt i10K GSM Intercom Installation Guide 

Contents

- [1 bpt i10K GSM Intercom](#)
- [2 Product Information](#)
- [3 Product Usage Instructions](#)
- [4 INSTRUCTIONS](#)
- [5 Access control](#)
- [6 Programming access control](#)
- [7 CONNECTING A HANDSET](#)
- [8 PROGRAMMING – sms](#)
- [9 Adding & Calling numbers](#)
- [10 PROGRAMMING software](#)
- [11 Documents / Resources](#)
 - [11.1 References](#)



bpt i10K GSM Intercom



Product Information

The GSM/i10K GSM Intercom is a keypad-based intercom system that allows for access control and communication with two gate stations. It features four buttons on the keypad and supports a MicroSIM card for communication. The intercom has multiple relays for controlling various functions and is powered by a 12VDC power source. It also includes a USB connector for programming and a slide and open hinge antenna connector.

Product Usage Instructions

To install the GSM/i10K GSM Intercom, follow these steps:

1. Configure each keypad as A or B by holding * and 0 for A or # and 0 for B when applying power to the keypad. Confirmation will be indicated by a beep and an orange illuminated LED.
2. Send an SMS to the unit with the following content: *2222 DUAL 1 (replace 2222 with your password) to enable Dual gate station functionality.
3. To disable Dual gate station, send an SMS to the unit with the following content: *2222 DUAL 0 (replace 2222 with your password).

To program access control passwords, follow these steps:

1. Enter programming mode by entering the default master password (1 2 3 4 5) and holding down the red * button.
2. A beep will be heard to indicate programming mode.
3. Press numbers 1 – 4 to program the password for relays 1 – 4.
4. Press the red * button.
5. Enter the password (up to 8 numbers) and press the red * button.
6. An acknowledgment tone will be heard to confirm the programming.

To reset the master password, follow these steps:

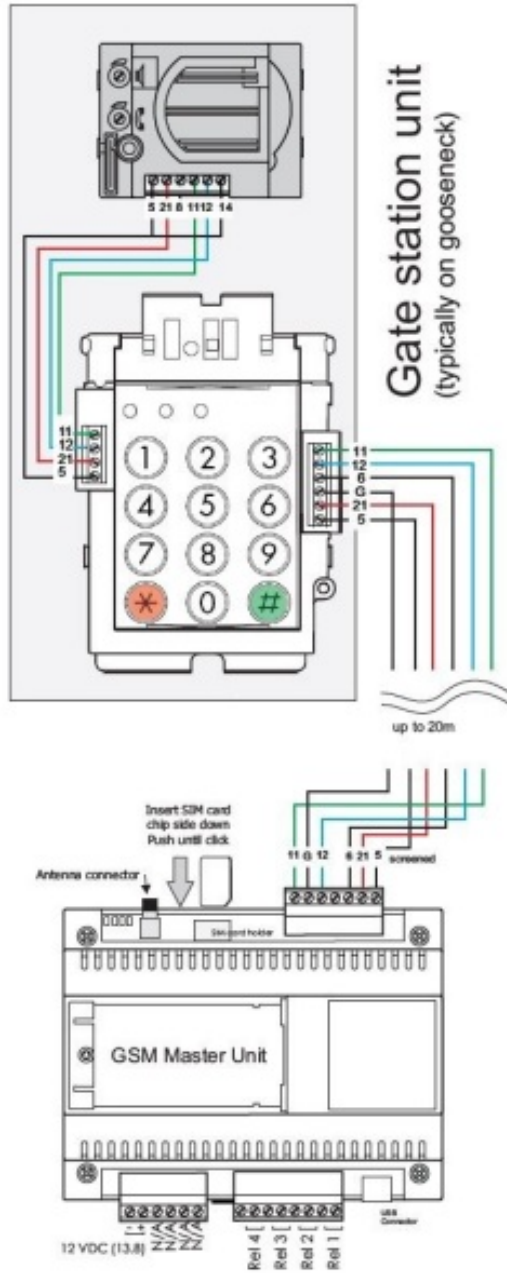
1. Hold down the numbers 1 9 while applying power until a beep is heard.
2. Enter the new password followed by the green # button.
3. Power-cycle the unit.

To connect a handset, a connection unit may need to be purchased from the supplier. Follow the provided instructions for connecting the handset. Please note that if the unit is connected to a computer via the USB cable, the SMS and dialing capabilities will not work. Remove the USB cable after programming to allow the unit to proceed with the boot sequence.

INSTRUCTIONS

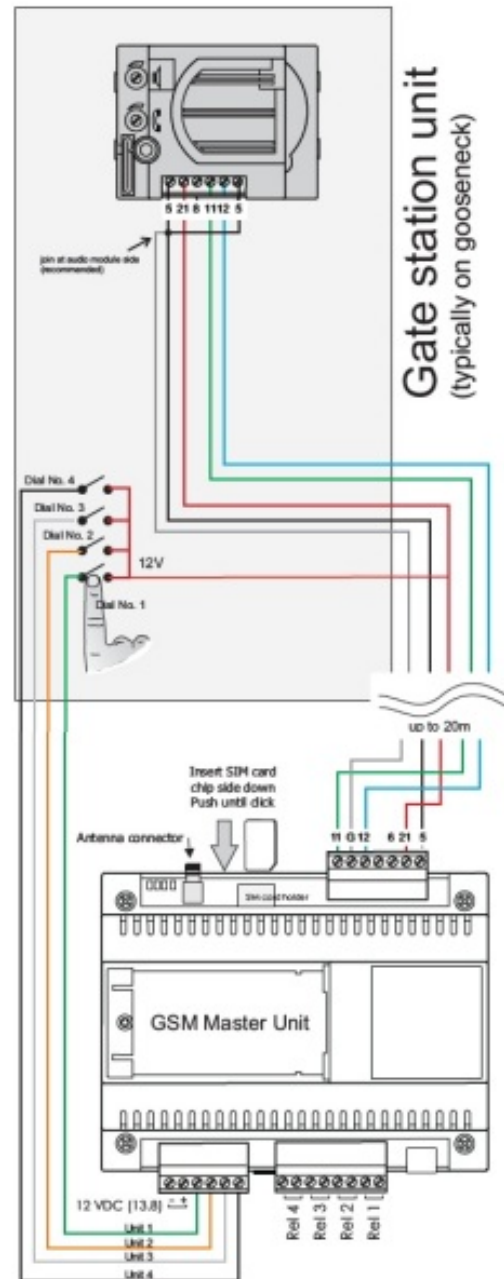
GSM INTERCOM

Keypad



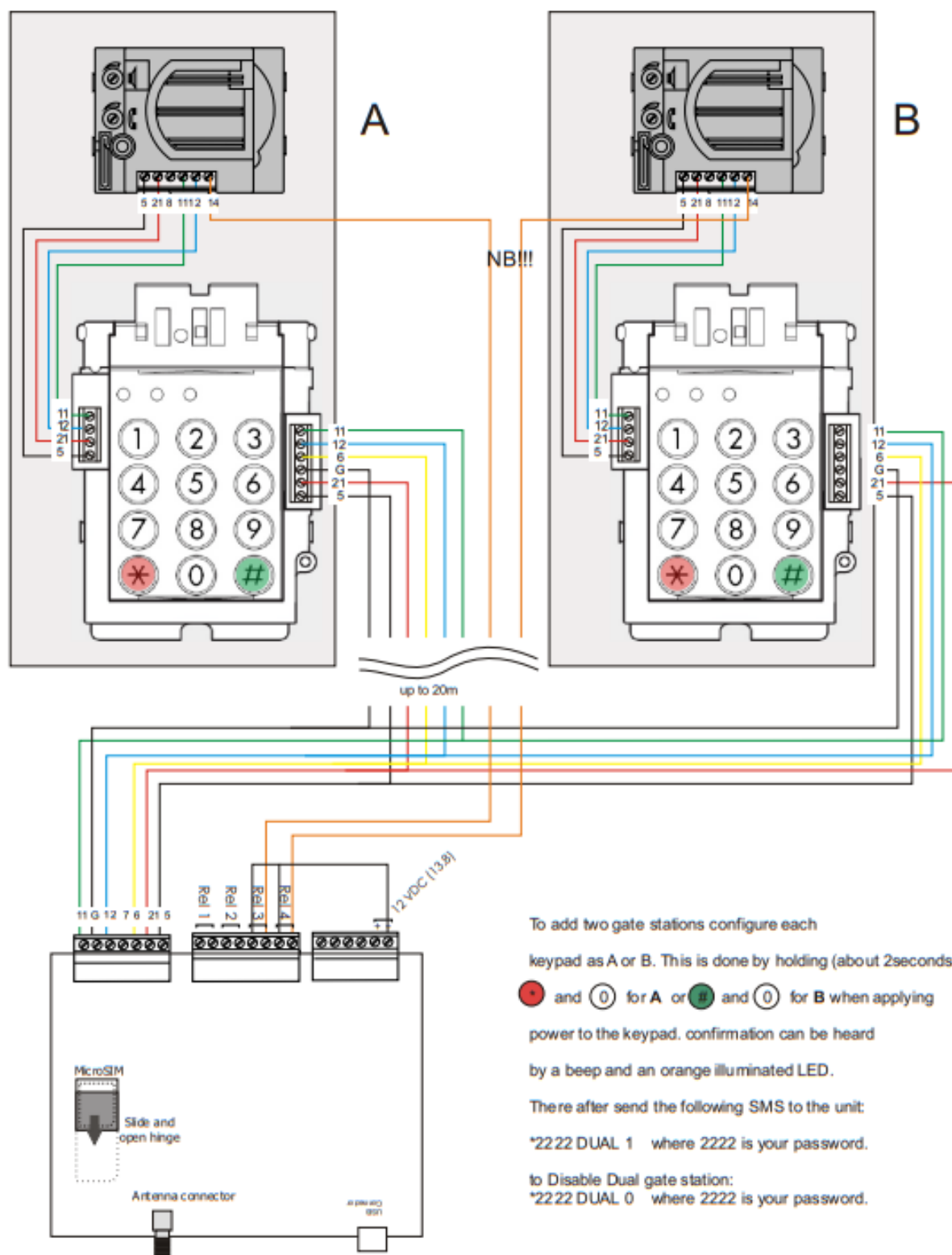
GSM INTERCOM





4 Button



M000042

TWO gate stations



To add two gate stations configure each keypad as A or B. This is done by holding (about 2seconds)  and  for **A** or  and  for **B** when applying power to the keypad. confirmation can be heard by a beep and an orange illuminated LED.

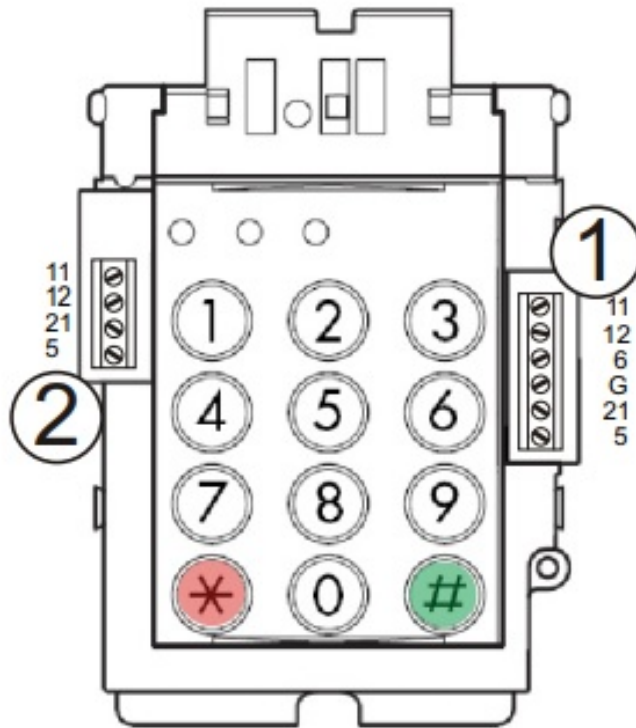
There after send the following SMS to the unit:

*2222 DUAL 1 where 2222 is your password.

to Disable Dual gate station:

*2222 DUAL 0 where 2222 is your password.

NOTE: All relays are normally open contacts



Access control

The gatestation with access control module is now equipped with the ability to trigger the relays on the GSM master board by entering in a password on the keypad. This is useful in the case where entry and exit maybe be provided to home owners and guests, in addition to the missed call feature of the intercom.

Programming access control

All passwords for access control are programmed via the keypad. Four passwords may be programmed to activate the respective four relays on the GSM master board.

1. To enter programming mode enter 1 2 3 4 5 and hold down the red • button (1 2 3 4 5 is the default master password).
2. A beep will be heard which signifies programming mode.
3. Press numbers 1 – 4 to program the password for relays 1 – 4
4. Press the red •
5. Enter the password (up to 8 numbers) and press the red*
6. An acknowledgment tone will be heard.

The unit has now exited from programming mode and the programmed password may be used by pressing the password followed by the green

NOTES:

1. Password 1 is the also master password – changing this will change the programming password.
2. All numbers less than 4 characters are interpreted as a unit number, therefore choose a password of 5 numbers or more for access control.
3. If an incorrect password is entered 3 times the keypad will prevent any input for the following 20 seconds.

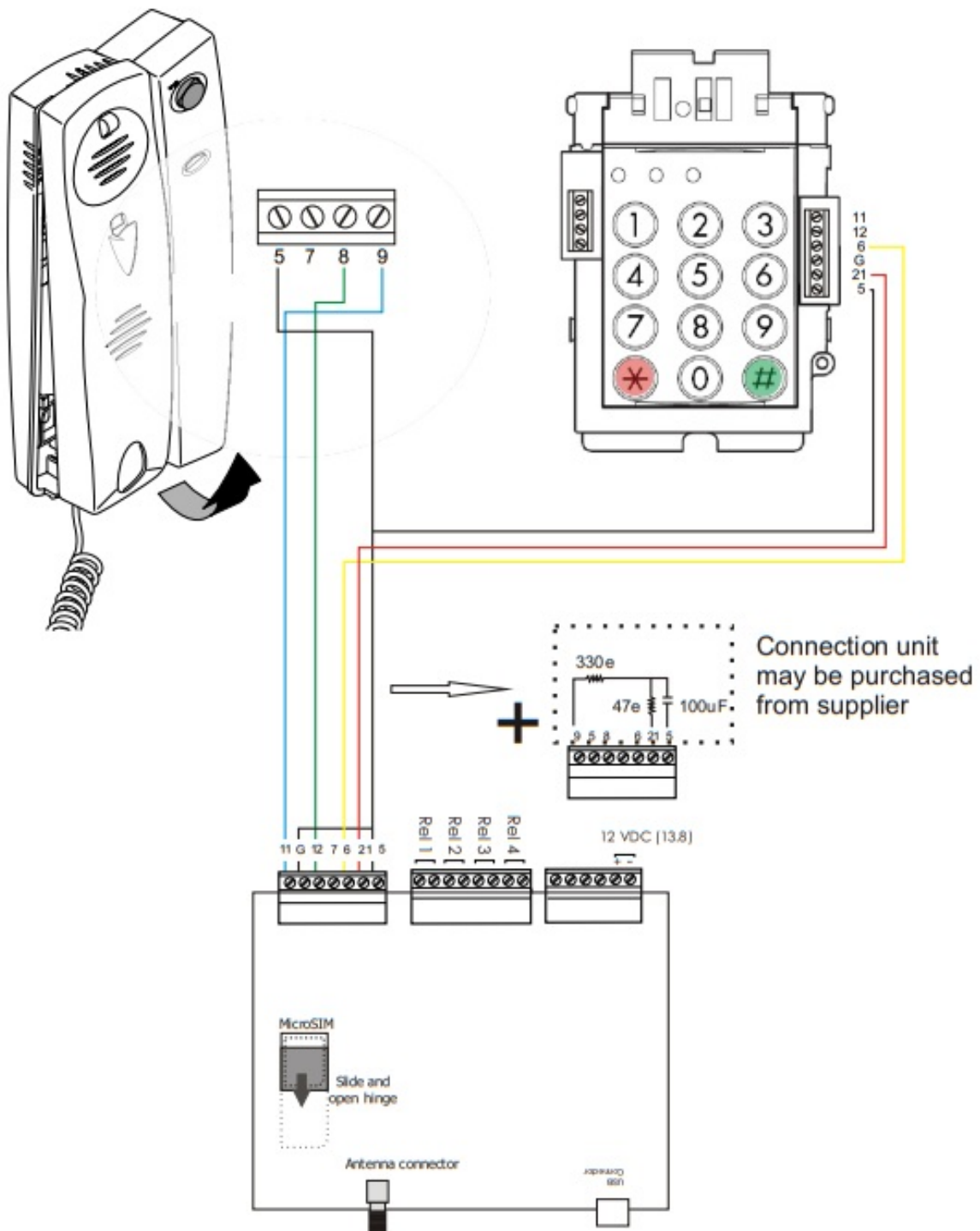
Reactivation is indicated by a beep.

4. A single invalid tone indicates an unprogrammed unit number has been entered
5. A double invalid tone indicates an invalid access control password has been entered

Resetting the master password:

1. Hold down the numbers 1 9 while applying power until a beep is heard.
2. Enter in the new password followed by the green # button
3. Power-cycle the unit

CONNECTING A HANDSET



PROGRAMMING – sms

Booting sequence

On power up all LEDs will be on. As the unit passes the various tests the LEDs will turn Off. Only when the green and blue LEDs are flashing slowly is unit in the normal running state. "System ready" audio notification will be played through the gate station

Please note that if the unit is connected to a computer via the USB cable, none of the SMS or dialing capabilities will work. Remove the USB cable after programming and the unit will proceed with the boot sequence.

Programming

The unit may be programmed via PC software through the USB port Or via SMS. The following are the Structure Of the SMSs for the various programming options. The default password is 2222 and must be changed. All messages Start and end with a * (asterisk)

- Change password from 2222 to 7788: *2222 PASS 7788
- Add airtime: *2222 NETW XXXXXXXXXXXX where XXXXXXXXXXXX is the recharge USSD Command and voucher pin eg *2222 NETW 12345678912345#
- Retrieve airtime available: *2222 NETW (NB: No *asterisk at the end)
- Set automatic hang-up time to 60s: *2222 HANG XX – hangup time seconds (25 seconds default)
- Set the status number: *2222 STAT 27821234123

The status number will SMS'd on a weekly basis

Adding & Calling numbers

(Keypad Version)

- Each unit may have two numbers associated with it. By pressing the unit number and either the * or # dial buttons the associated number will be dialed. (# for number 1 and * for number 2)
- The GSM intercom may have up to a 4 digit number (9999 max)
- The unit will give an audible message acknowledging that the call is in progress. If an unprogrammed unit is dialed, an error message will be heard.
- Should the caller wish to cancel the phone call at any stage they may press either of the dial buttons to hang up.
- **NB:** all numbers added must contain the country code ie, 27821234123 and no

*2222 ADDN AAAAAAAAAA,BBBB,C,D

AAAAAAAAAA – telephone number eg 27821231234

BBBB – unit number 1-9999

C – user number 1 ,2

D – missed call permission (1- relay1, 2 relay2)

Examples

- Add number 2 for unit 123 and allow missed call relay 1: *2222 ADDN 27821234123,
- Add number 1 for unit 32 and allow missed call relay 2: *2222 ADDN ,2
- Remove a number: *2222 DELN 27821234123
- Clear telephone list: *2222 CLRN

Gate triggering

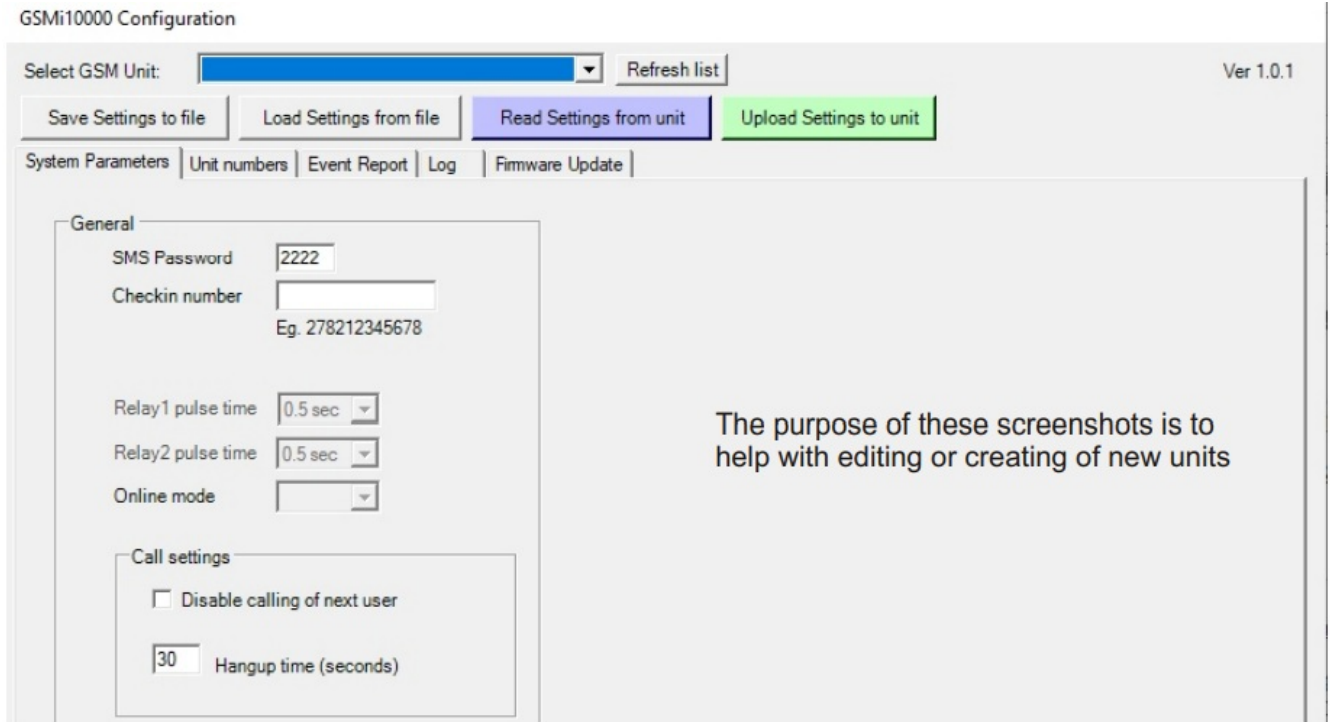
At any point during the conversation the home owner may key in on their keypad the number 1 or 2 or 3 or 4. This will activate one of the 4 relays at the unit respectively which will typically trigger the gate to be opened.

Missed-call activation

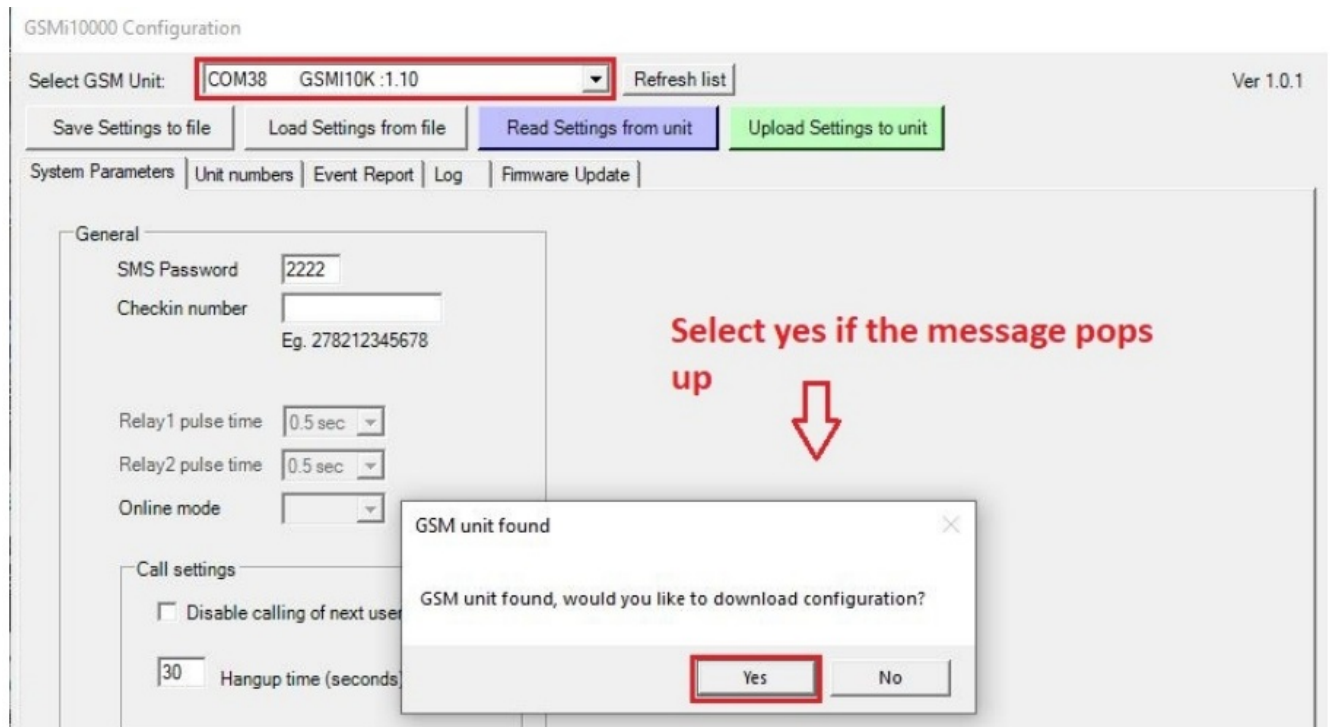
The GSM unit comes equipped with a missed call function. Only programmed numbers may activate this function. When the caller phones the number of the SIM card in the GSM intercom, the unit will proceed to hang up the called and activate relay 1 and no charge to the caller.

PROGRAMMING software

1. Download GSMi10000 software: <https://gsmi10k.co.za/GSMi10config.EXE>.
2. Launch GSMi10000 software and connect USB Cable (Ensure that the PCB is powered via 12 DC)



3. Select COM Port by clicking below box (the COM port will appear automatically).



4. Very important Always Read Settings from Unit (if the pop up message from previous step doesn't appear)

GSMi10000 Configuration

Select GSM Unit: COM38 GSMI10K :1.10 Refresh list

Save Settings to file
Load Settings from file
Read Settings from unit
Upload Settings to unit

System Parameters
Unit numbers
Event Report
Log
Firmware Update

5. Select the “Unit numbers” tab

GSMi10000 Configuration

Select GSM Unit: COM38 GSMI10K :1.10 Refresh list Ver 1.0.1

Save Settings to file
Load Settings from file
Read Settings from unit
Upload Settings to unit

System Parameters
Unit numbers
Event Report
Log
Firmware Update

Add unit

Unit no. Add to list Unit added, you may now add Users for the unit

- Unit 1
- Unit 2
- Unit 3
- Unit 4
- Unit 5
- Unit 6
- Unit 7
- Unit 9999

6. Creating a unit: Enter a unit number between 1 9999 which represents a house or office and Click “Add to list” tab (See below example, adding unit 100).

GSMi10000 Configuration

Select GSM Unit: COM38 GSMI10K :1.10 Refresh list Ver 1.0.1

Save Settings to file
Load Settings from file
Read Settings from unit
Upload Settings to unit

System Parameters
Unit numbers
Event Report
Log
Firmware Update

Add unit

Unit no. Add to list Unit 100 already exists

eg, Unit 100

7. Adding a telephone number belonging to the unit: (a) Click Add user, (b) Select user number between 1 – 3. (c) Enter a telephone number starting with country code and no +’s (e.g. South Africa 27821231234). (d) click Add button.

GSMi10000 Configuration

Select GSM Unit: Ver 1.0.1

Add unit

Unit no. Unit added, you may now add Users for the unit

Unit 100

(a)

Selected user information

Unit number

User number (b)

Telephone number (c) eg 27821231234

Missed call permissions

Pulse Relay1

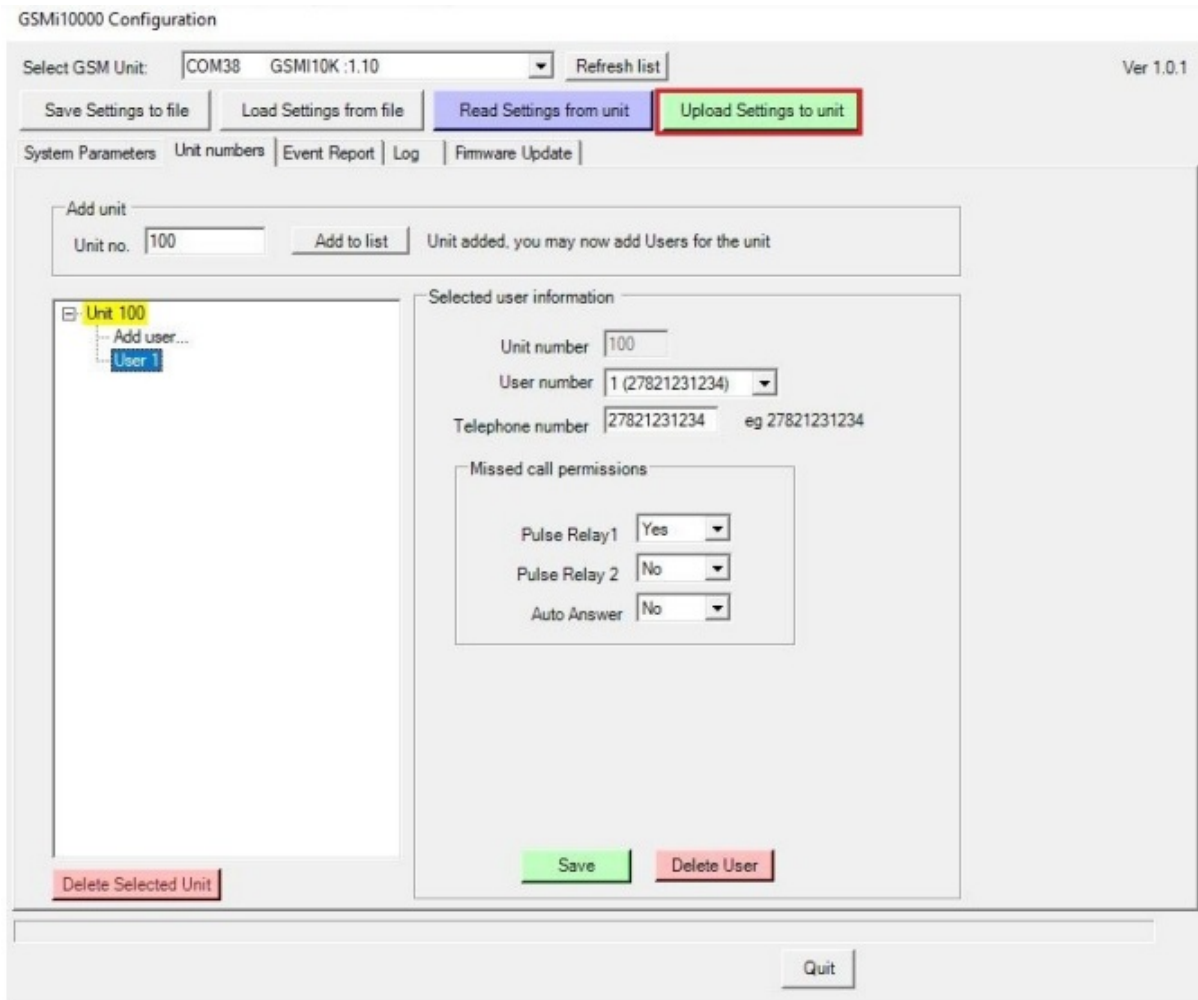
Pulse Relay 2

Auto Answer

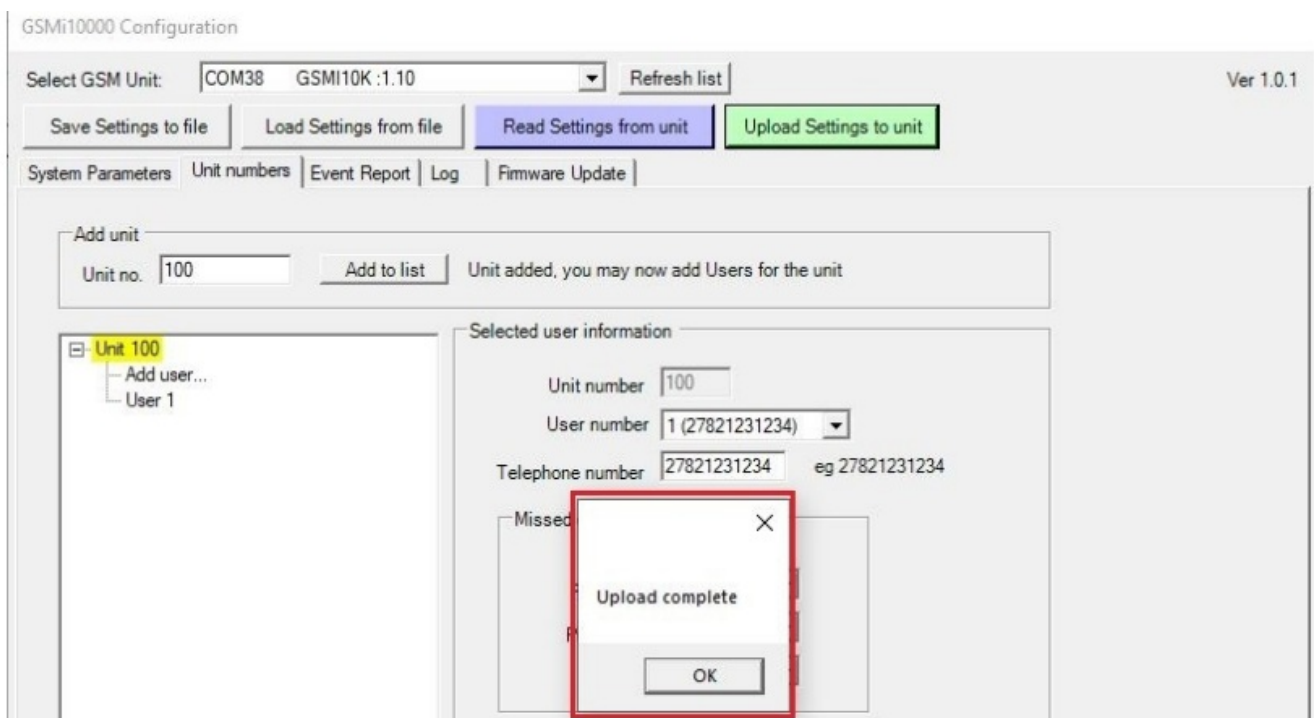
(d)

NB: To add a second or third number in the same unit please select the relevant user number in step (b) of above example and follow step (c) and (d).

8. To create additional units, repeat same process starting from step 6 and do the same for all the units required
9. Click "upload settings to unit" button and wait for the "Upload complete" message as shown on the next



10. Unplug the USB cable after the below message and wait for the unit to reboot then you can start dialing from the entry panel.



11. Dialing the units

The # button on the keypad will dial 1st number and * button will dial the second number, the system will divert to 3rd number if 1st & 2nd numbers don't answer. Always start with unit number followed by # or * button.

Example:

- To call the 1st number of unit 100, dial 100#
- To call the 2nd number of unit 100, dial 100*


SIM Network selection

The system works with all network service providers.

Very Important!

The missed call option is not automatically available with MTN Network, please contact the service provider to enable “LTE Voice Over” to access the feature

Documents / Resources

	bpt i10K GSM Intercom [pdf] Installation Guide i10K GSM Intercom, i10K, GSM Intercom, Intercom
---	---

References

- [User Manual](#)

Manuals+, Privacy Policy

This website is an independent publication and is neither affiliated with nor endorsed by any of the trademark owners. The "Bluetooth®" word mark and logos are registered trademarks owned by Bluetooth SIG, Inc. The "Wi-Fi®" word mark and logos are registered trademarks owned by the Wi-Fi Alliance. Any use of these marks on this website does not imply any affiliation with or endorsement.