

BOXLIGHT IMPACT Lux Changing System Navigation User Guide

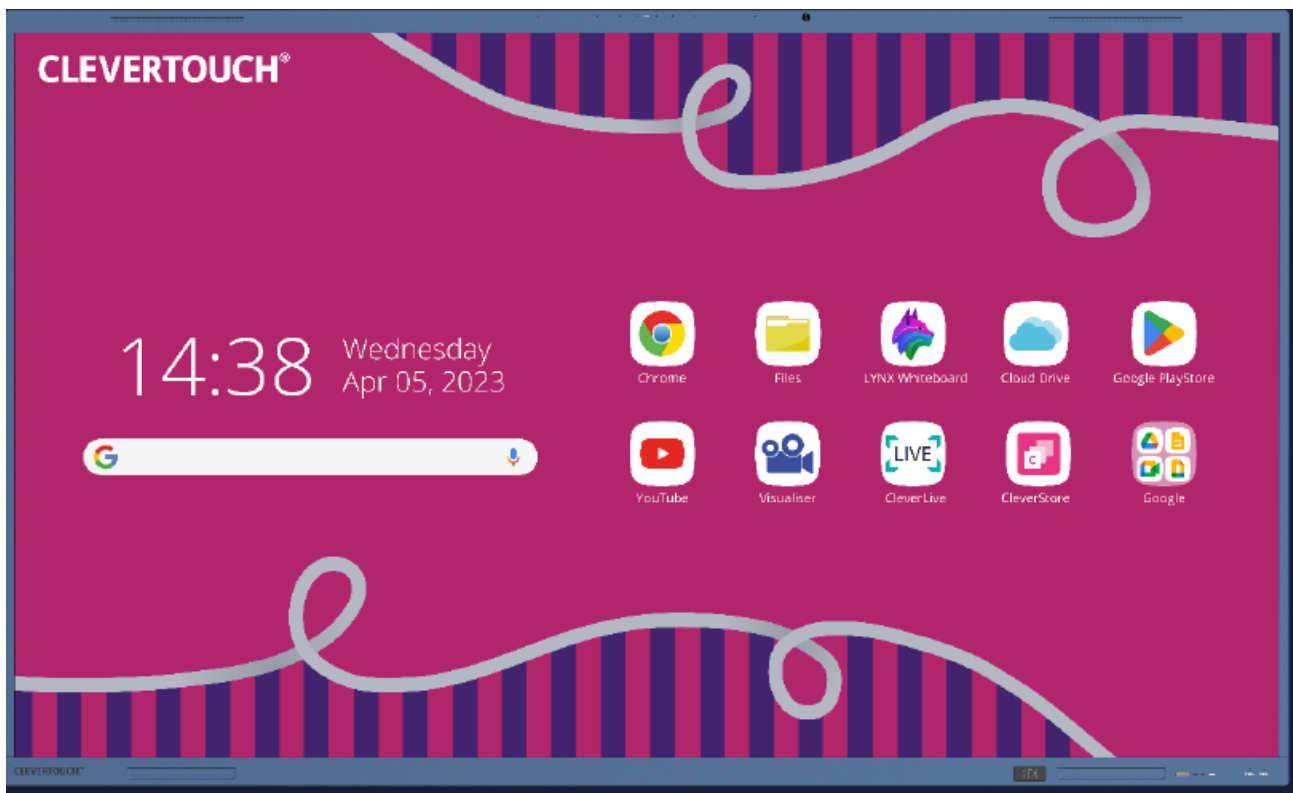
[Home](#) » [Boxlight](#) » BOXLIGHT IMPACT Lux Changing System Navigation User Guide 

Contents

- 1 BOXLIGHT IMPACT Lux Changing System Navigation
- 2 IMPACT Lux Changing System Navigation
- 3 * How to get into the Google Settings if the Native Toolbar is disabled.*
- 4 Documents / Resources
 - 4.1 References
- 5 Related Posts

BOXLIGHT

BOXLIGHT IMPACT Lux Changing System Navigation



Product Information Specifications

- Product Name: IMPACT Lux Changing System
- Navigation: Touchscreen
- System Compatibility: Android
- Features: Gesture-based navigation, Traditional navigation

Product Usage Instructions Enabling Toolbar

1. Swipe down from the top of the screen to access the toolbar.
2. If the toolbar is disabled, follow the steps below to enable it or refer to page 5 of the user manual.

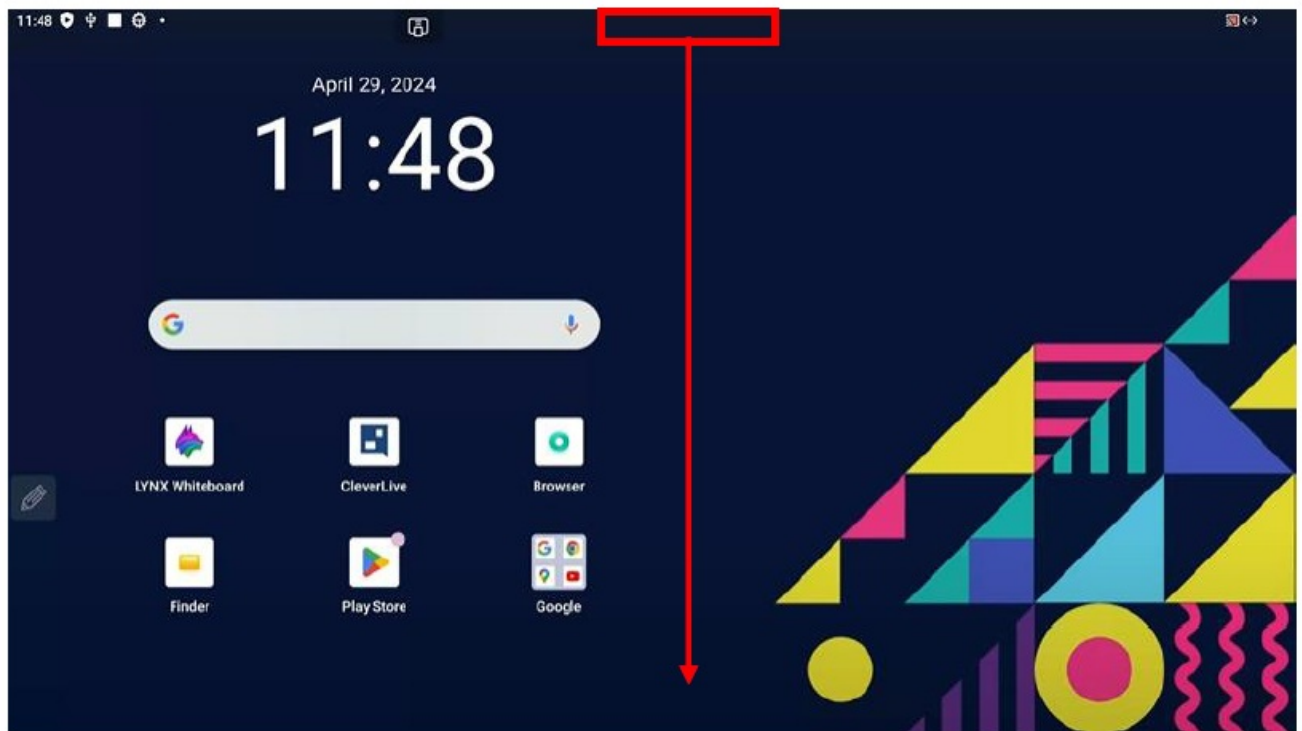
FAQ (Frequently Asked Questions):

Q: How do I enable the toolbar if it's disabled?

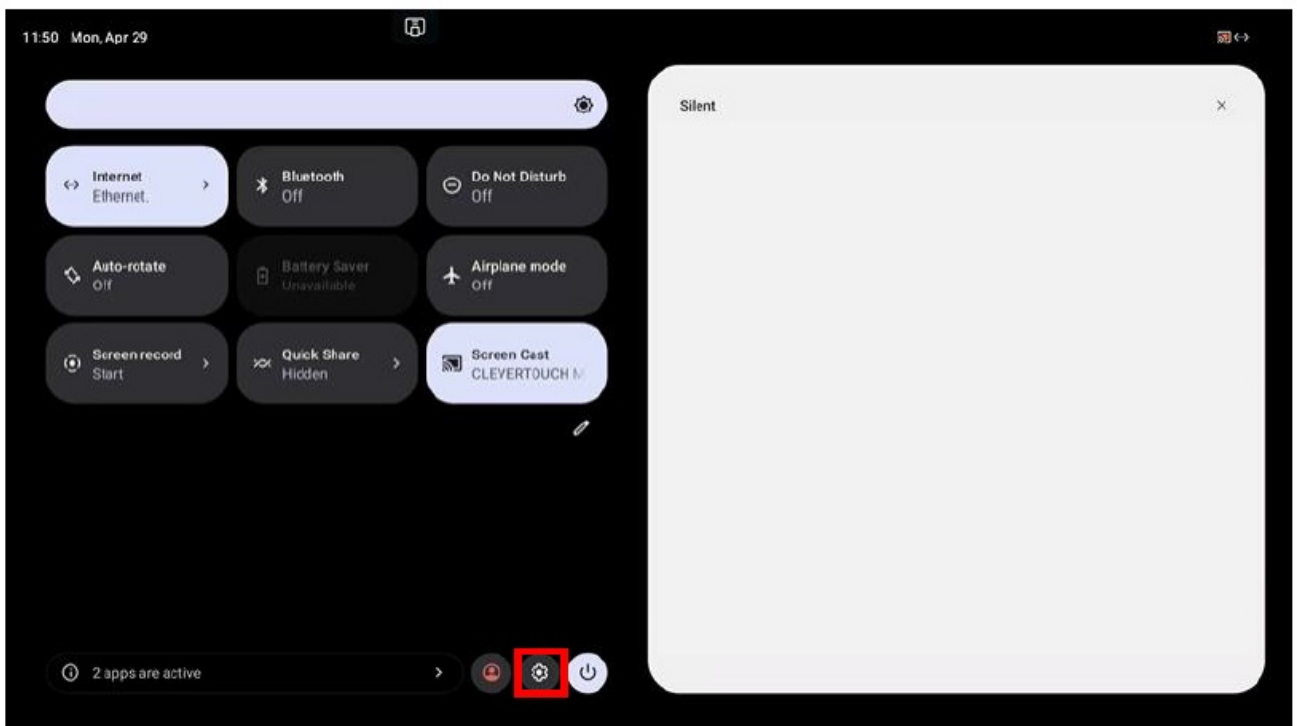
A: Swipe down from the top of the screen to reveal the toolbar. If it's still disabled, refer to page 5 of the manual for detailed instructions on enabling it.

IMPACT Lux Changing System Navigation

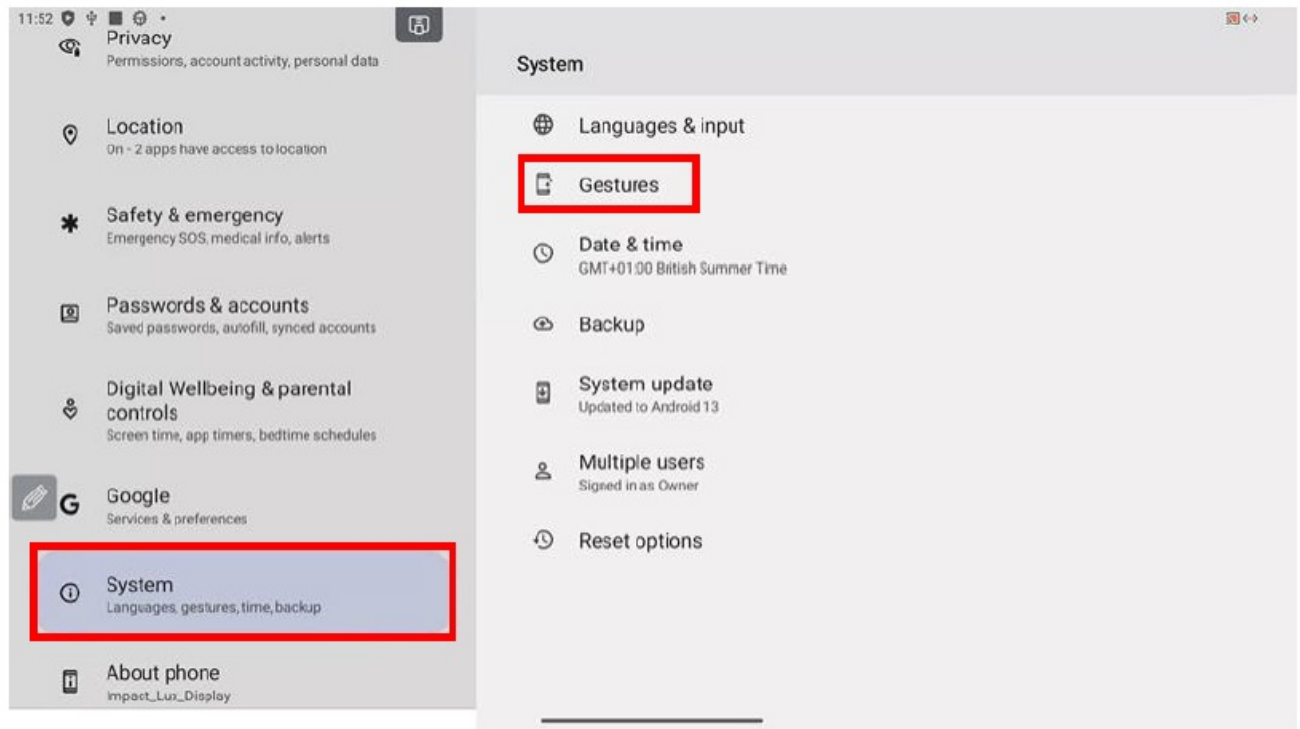
1. Swipe down from the top of the screen. (If toolbar is disabled, enable it, or follow the steps on page 5)



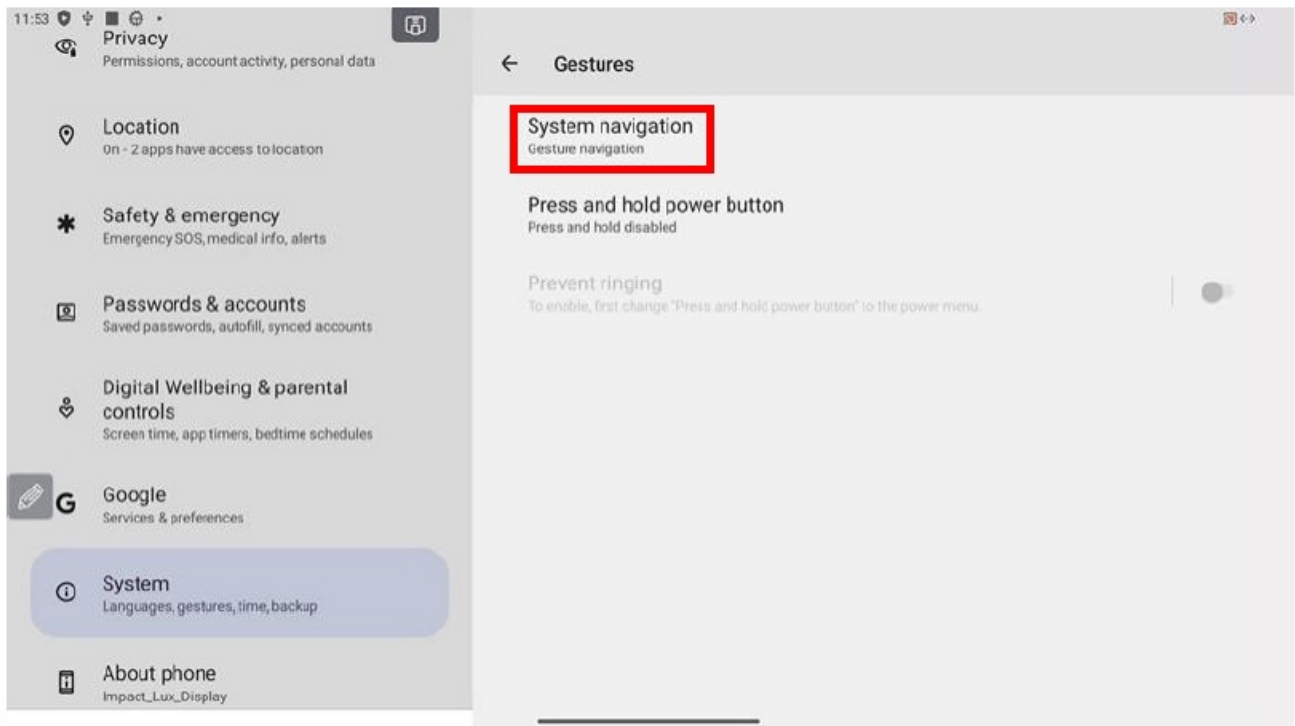
2. Select the settings cog.



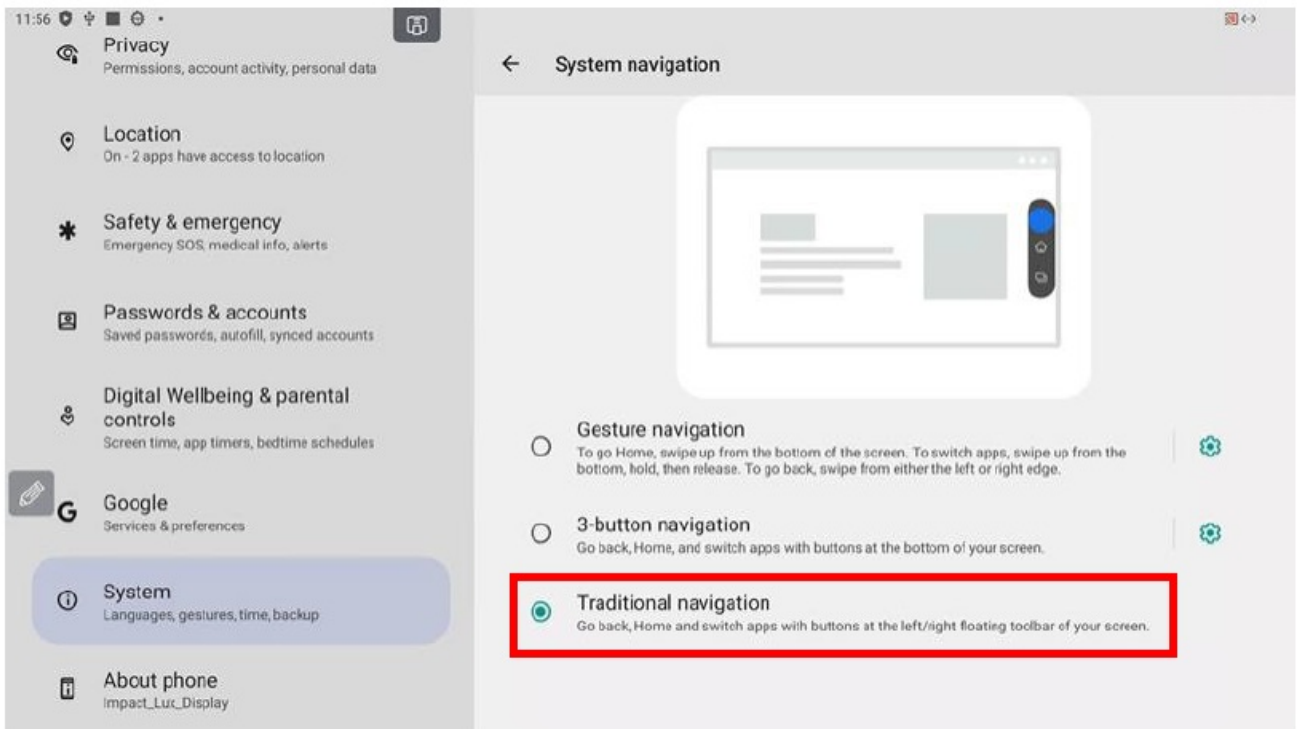
3. Scroll down and select "System" then "Gestures".



4. Select "System navigation".

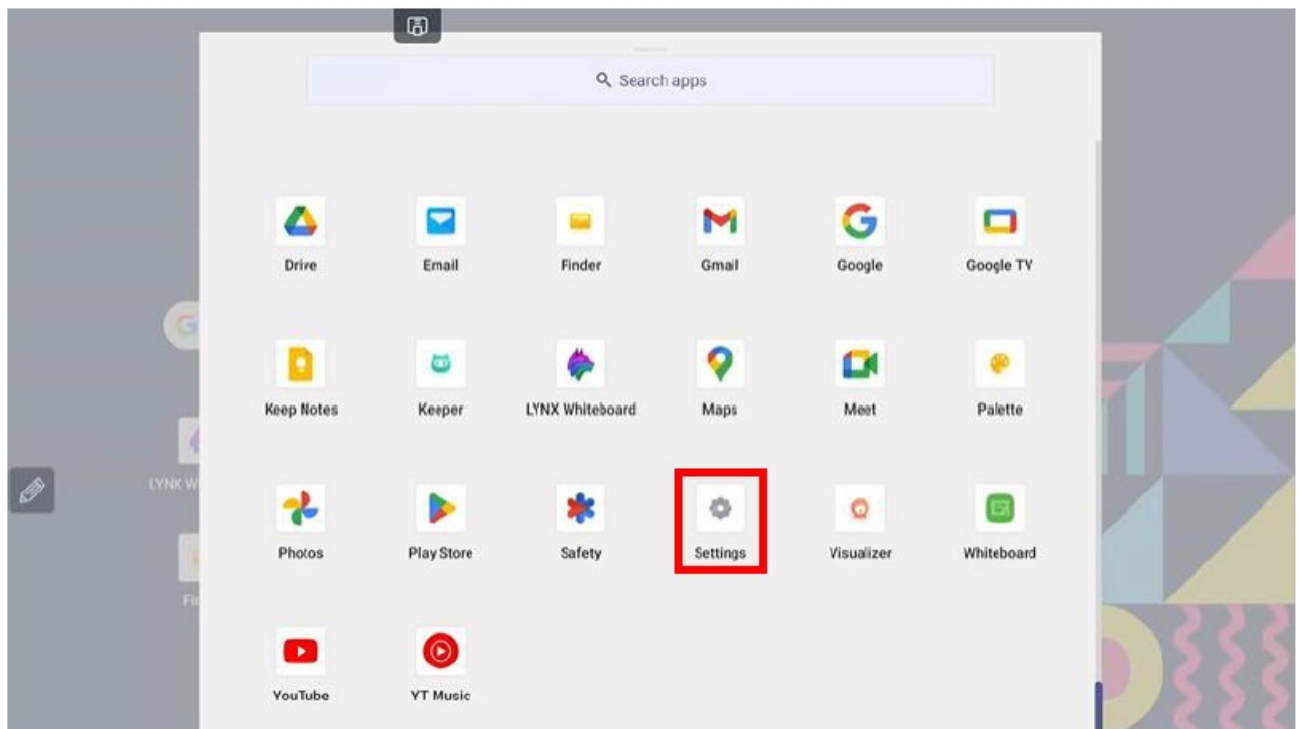


5. Finally, select "Traditional navigation".

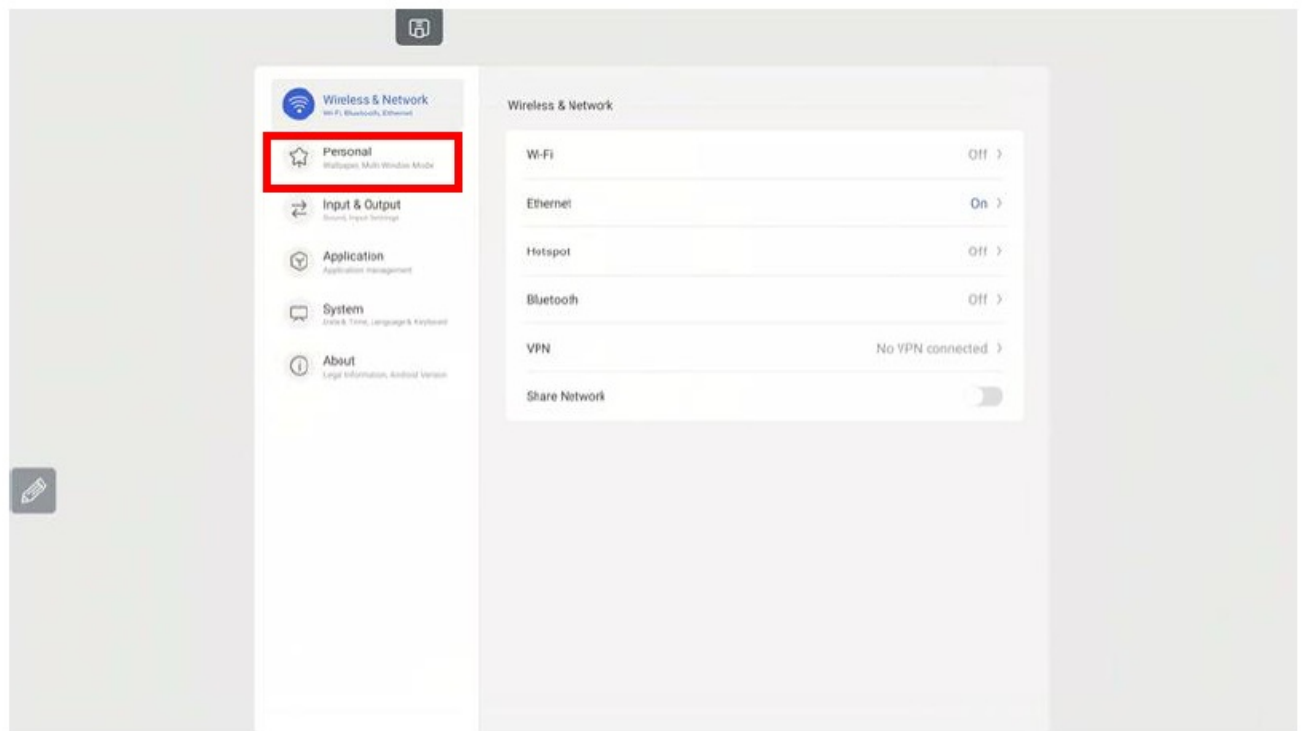


*** How to get into the Google Settings if the Native Toolbar is disabled.***

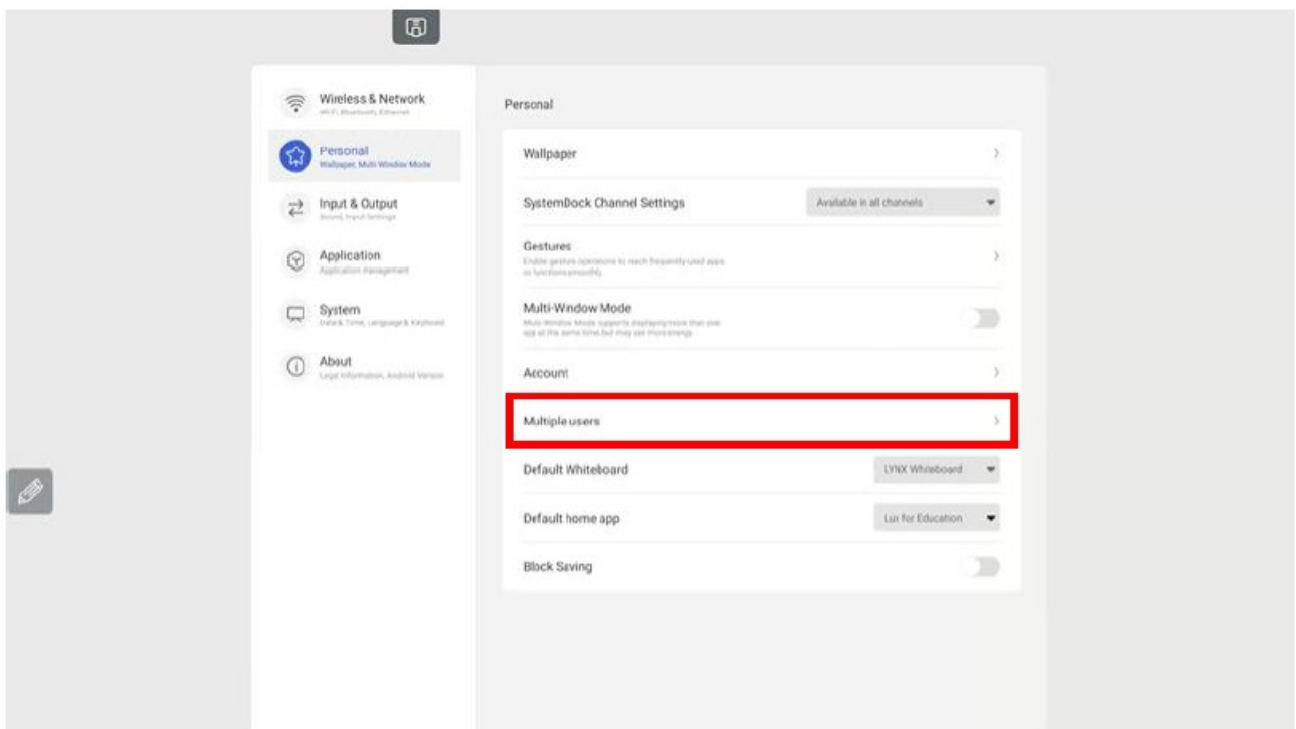
1. Swipe up from the middle of the screen and open the settings app.



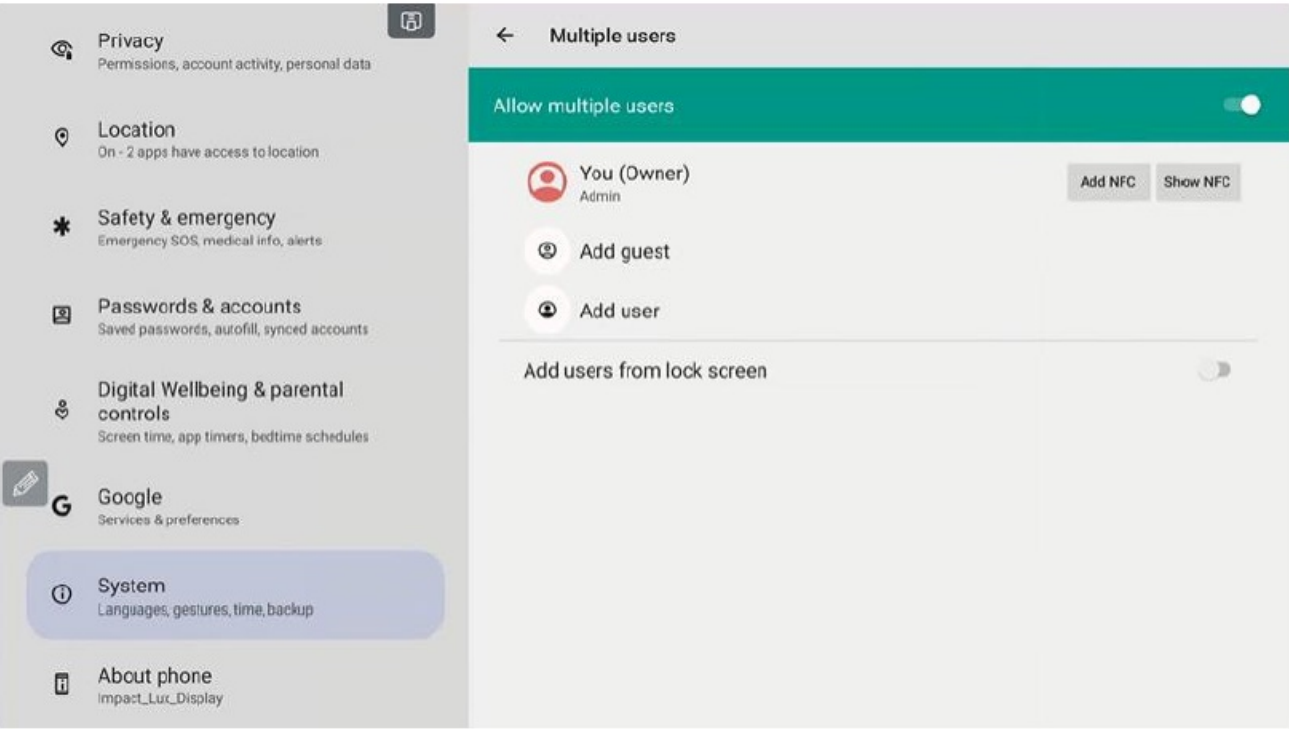
2. Select "Personal".



3. Select "Multiple users".



4. You are now in the Google settings. Return to page 3 and follow the steps from there.



Documents / Resources

	<p>BOXLIGHT IMPACT Lux Changing System Navigation [pdf] User Guide</p> <p>IMPACT Lux Changing System Navigation, IMPACT Navigation, Lux Changing System Navigation, Lux Changing System, Navigation</p>
--	-------------------------------------------------------------------------------------------------------------------------------------------------------------------------------------------------------------------------

References

- [User Manual](#)

Manuals+, Privacy Policy

This website is an independent publication and is neither affiliated with nor endorsed by any of the trademark owners. The "Bluetooth®" word mark and logos are registered trademarks owned by Bluetooth SIG, Inc. The "Wi-Fi®" word mark and logos are registered trademarks owned by the Wi-Fi Alliance. Any use of these marks on this website does not imply any affiliation with or endorsement.