

bouncepad
bouncepad BP-
COR-S60-W Core
Static 60



bouncepad BP-COR-S60-W Core Static 60 Installation Guide

[Home](#) » [bouncepad](#) » bouncepad BP-COR-S60-W Core Static 60 Installation Guide 

Contents

- 1 [bouncepad BP-COR-S60-W Core Static 60](#)
- 2 [Product Usage Instructions](#)
- 3 [Assembly Instructions](#)
- 4 [Tools Required](#)
- 5 [In the Box](#)
- 6 [Fixings List](#)
- 7 [Documents / Resources](#)
 - 7.1 [References](#)
- 8 [Related Posts](#)

bouncepad[®]

bouncepad BP-COR-S60-W Core Static 60



Specifications:

- Product Name: Core Static 60
- Maximum Mounting Surface Thickness: 25mm (Metric) / 1" (Imperial)
- Minimum Mounting Surface Thickness: 34mm (Metric) / 1 5/16" (Imperial)
- Sheet Code: BP-IM-080_REV1
- Release Date: 06/08/2024

Product Usage Instructions

Assembly Instructions:

Tools Required: Pencil, Electric Drill, 7mm Spanner or adjustable spanner, 5.0mm Drillbit (if fixing from below), 2.5mm Drillbit (if fixing from above), 16mm Holesaw, Socket Driver, T20 Pin Torx Driver Bit

Mounting Instructions:

1. Mark the drill hole locations using the specified tools.
2. Drill each hole according to the specified sizes.
3. Screw the components into place using the provided screws and nuts.
4. Secure the arm and shell to the mounting surface with the appropriate fixings.

Tablet Mounting Instructions:

1. Clean the back of the tablet with the provided wipe and let it dry completely.
2. Attach the mounting plate to the tablet back using the adhesive tabs.
3. Connect the flat cable to the tablet with the U-Bend Head for proper functionality.

Frequently Asked Questions (FAQ):

- **Q: Can I use electric tools for assembly?**

A: It is recommended to tighten screws using hand tools to avoid damaging your Bouncepad.

- **Q: What if I receive additional fixings in the kit?**

A: Due to the modular nature of our product range, you may receive extra fixings which can be used as needed.

- **Q: How do I ensure proper orientation for tablet mounting?**

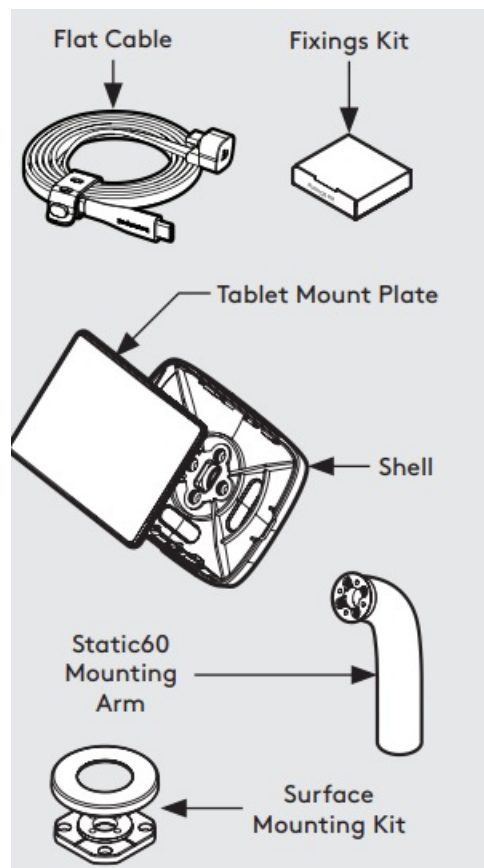
A: Follow the provided instructions for portrait or landscape orientation and ensure a secure attachment.

- **Q: Is it necessary to clean the tablet before attaching it to the mounting plate?**

A: Yes, it is essential to clean the tablet with the provided wipe before attaching it for a secure fit.

Core Static 60

Assembly Instructions



Tools Required

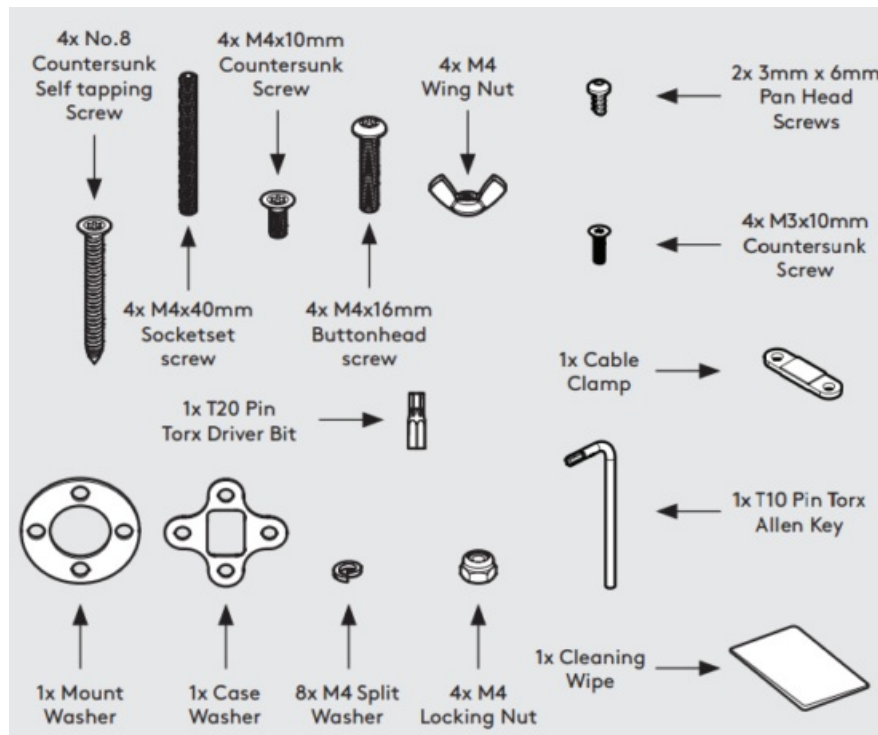
- Pencil
- Electric Drill 16mm
- Holesaw
- *if routing the tablet cable through your mounting surface
- 7mm Spanner *or adjustable spanner
- 2.5mm Drillbit *if fixing from above
- 5.0mm Drillbit *if fixing from below *see overleaf
- Tighten screw(s) using hand tools, using electric tools may damage your Bouncepad.
- Drill each hole – using the specified drill sizes. B2
- Ø2.5mm Drillbit
- Ø16.0mm Holesaw

- Socket Driver
- Sheet Code: BP-IM-080_REV1
- Release Date: 06/08/2024

Copyright 2024 Spotspot Ltd. (T/A Bouncepad) all rights reserved. Confidential, no part of this publication may be reproduced or transmitted in any form without the written permission of the copyright holder.

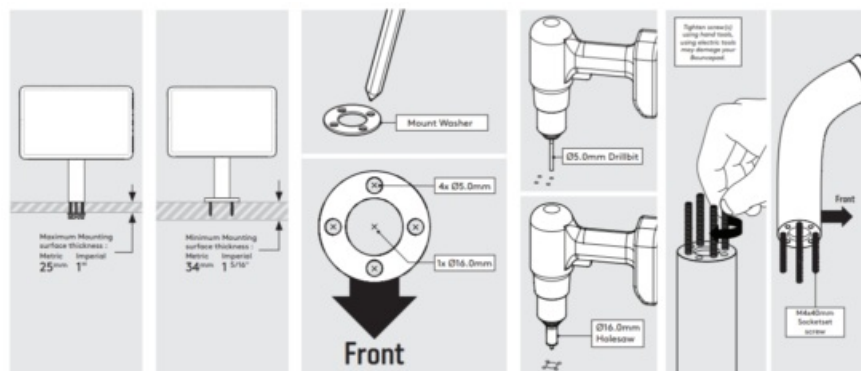


In the Box



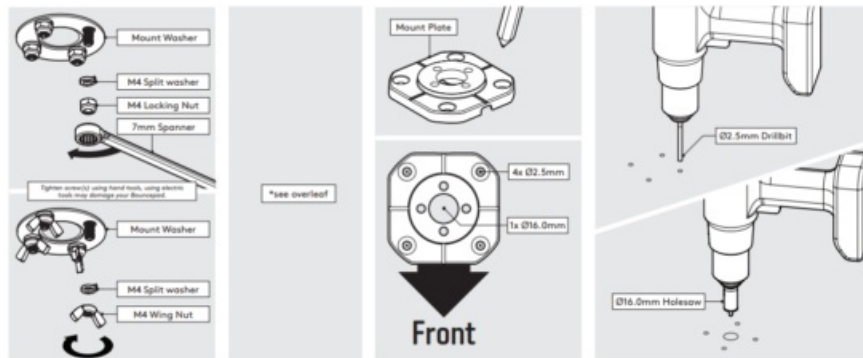
Fixings List

Due to the modular nature of our product range you may receive additional fixings in the fixings kit

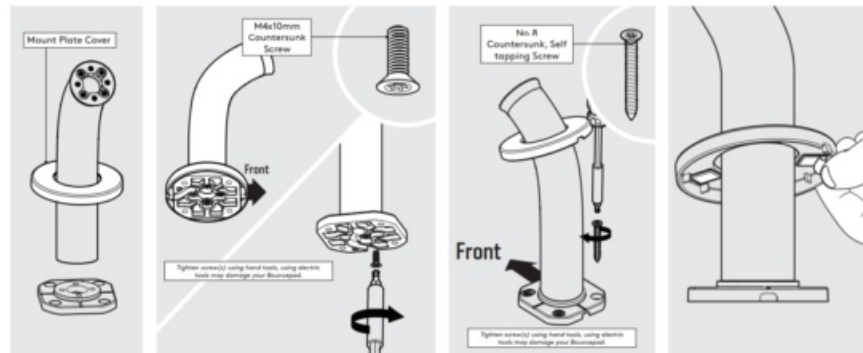


- A Follow steps A if "Fixing from below"
- B Follow steps B if "Fixing from Above"

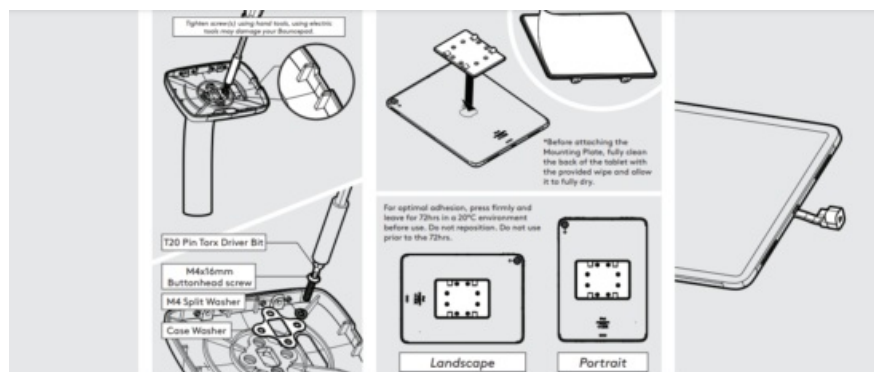
- A1 Using the Mount washer, mark the drill hole locations.
- A2 Drill each hole – using the specified drill.
- A3 Locate and screw the Socket screws into the Desk as shown



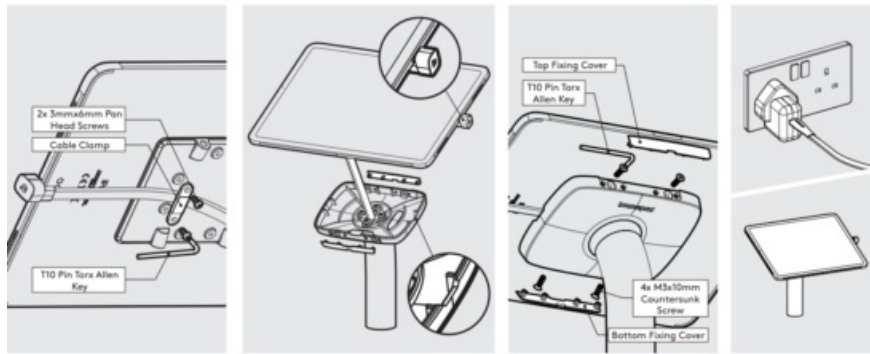
- A4 Secure the arm to the surface. Locking Nuts offer higher security
- A5 Go to step 1.
- B1 Using the Mount Plate, mark the drill hole locations as shown
- B2 Drill each hole – using the specified drill sizes



- B3 Locate the Cover onto the Static60.
- B4 Join the Static60 & Mount Plate in the orientation shown.
- B5 Secure the Static60 to the surface with the 4x countersunk fixings
- B6 Adhere the Mount Cover onto the Mount Plate with the adhesive tabs.

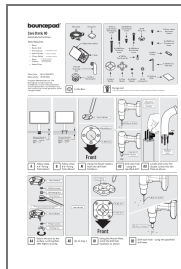


- B7 Go to step 1.
 1. Locate & attach the Shell to the Static 60 in the correct orientation.
 2. Remove the Mounting Plate adhesive backing. Attach level & centrally to the Tablet back as shown.
 3. Attach the Flat Cable to the Tablet with the U-Bend Head



4. Secure the Flat Cable to the Mounting Plate with the Cable Clamp as shown.
5. Remove the Fixing Covers. Feed the Flat Cable into the assembly & locate the Tablet in the chosen orientation.
6. Secure the Tablet to the Shell & attach the Fixing Covers as shown.
7. Connect tablet to power & installation is now complete.

Documents / Resources



[bouncepad BP-COR-S60-W Core Static 60](#) [pdf] Installation Guide
BP-COR-S60-W, BP-COR-S60-B, BP-COR-S60-W Core Static 60, BP-COR-S60-W, Core Static 60, Static 60, 60

References

- [User Manual](#)

[Manuals+](#), [Privacy Policy](#)

This website is an independent publication and is neither affiliated with nor endorsed by any of the trademark owners. The "Bluetooth®" word mark and logos are registered trademarks owned by Bluetooth SIG, Inc. The "Wi-Fi®" word mark and logos are registered trademarks owned by the Wi-Fi Alliance. Any use of these marks on this website does not imply any affiliation with or endorsement.