

bouncepad®
bouncepad BP-COR-
FLX-W Core Flex



bouncepad BP-COR-FLX-W Core Flex Installation Guide

[Home](#) » [bouncepad](#) » bouncepad BP-COR-FLX-W Core Flex Installation Guide 📄

Contents

- [1 bouncepad BP-COR-FLX-W Core Flex](#)
- [2 Product Usage Instructions](#)
- [3 Assembly Instructions](#)
- [4 In the Box](#)
- [5 Fixings List](#)
- [6 Documents / Resources](#)
 - [6.1 References](#)
- [7 Related Posts](#)

bouncepad®

bouncepad BP-COR-FLX-W Core Flex



Product Specifications

- Brand: Core Flex
- Model: BP-IM-082_REV0
- Release Date: 13/08/2024
- Manufacturer: Spotspot Ltd. (T/A Bouncepad)
- Maximum Mounting Surface Thickness: 25mm (Metric) / 1 inch (Imperial)
- Minimum Mounting Surface Thickness: 34mm (Metric) / 1 5/16 inch (Imperial)

Product Usage Instructions

Assembly Instructions

Tools Required:

- Pencil
- Electric Drill
- 7mm Spanner *or adjustable spanner
- 5.0mm Drillbit *if fixing from below
- 2.5mm Drillbit *if fixing from above
- 16mm Holesaw
- Socket Driver

Fixings List

Due to the modular nature of our product range, you may receive additional fixings in the fixings kit.

Installation Steps:

Fixing from Below:

1. Mark the drill hole locations using the Mount Washer.
2. Drill each hole with the specified drill size.
3. Locate and screw the Socket screws into the desk as shown.
4. Secure the arm to the surface using M4 Wing Nuts and Locking Nuts for higher security.

Fixing from Above:

1. Mark the drill hole locations using the Mount Plate.
2. Drill each hole with the specified drill sizes.
3. Join the Flex Arm & Mount Plate in the orientation shown.
4. Secure the Flex to the surface with countersunk fixings.
5. Adhere the Mount Cover onto the Mount Plate with the adhesive tabs.

Tablet Installation:

1. Attach the Shell to the Flex in the correct orientation.
2. Clean the back of the tablet with the provided wipe and allow it to dry completely before attaching the Mounting Plate.
3. Attach the Mounting Plate level & centrally to the Tablet back.
4. Attach the Flat Cable to the Tablet with the U-Bend Head.

Frequently Asked Questions (FAQ)

- **Q: Can I use electric tools for tightening screws?**

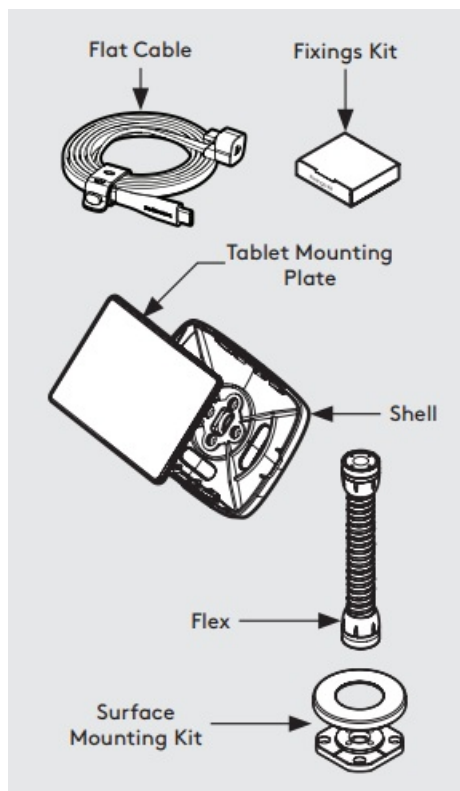
A: No, it is recommended to tighten screws using hand tools to avoid damaging your Bouncepad.

- **Q: What is the maximum mounting surface thickness supported by Core Flex?**

A: The maximum mounting surface thickness supported is 25mm (Metric) or 1 inch (Imperial).

Core Flex

Assembly Instructions



Tools Required:

- Pencil
- Electric Drill
- 7mm Spanner *or adjustable spanner
- 5.0mm Drillbit *if fixing from below
- 2.5mm Drillbit *if fixing from above –
- 16mm *If routing the tablet cable through your
- Holesaw mounting surface
- Socket Driver

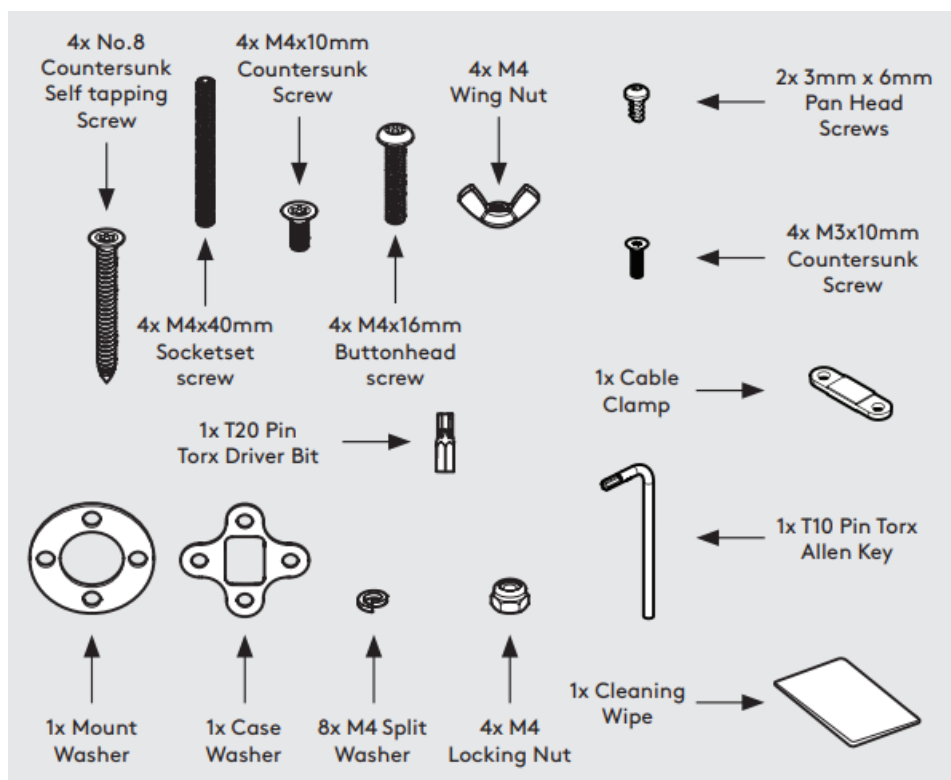
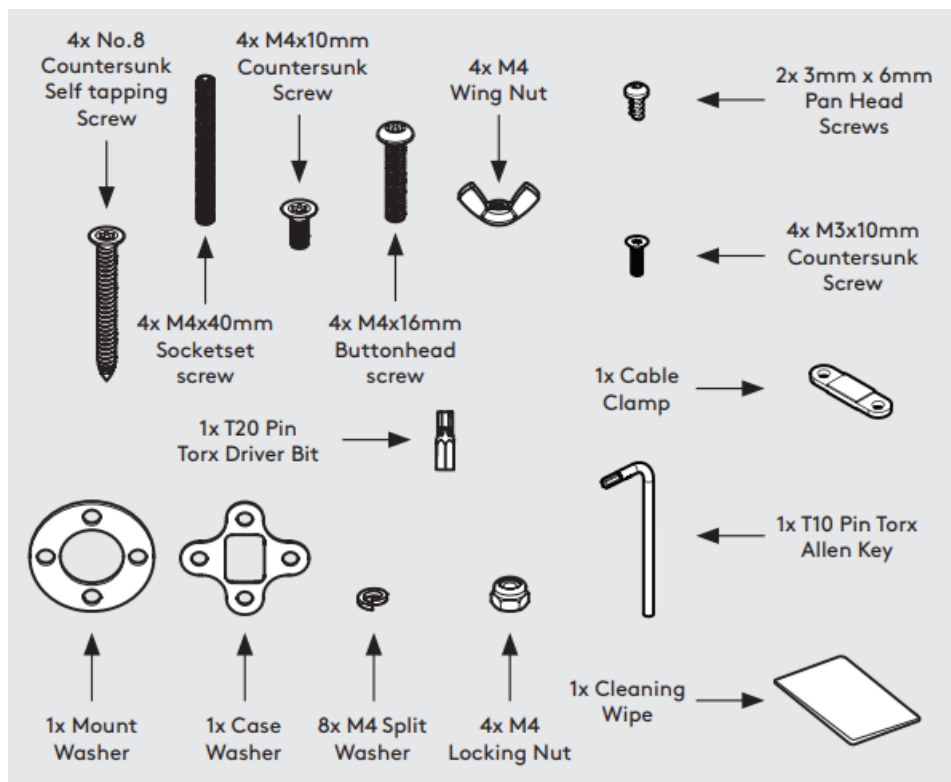
Sheet Code: BP-IM-082_REV0

Release Date: 13/08/2024

Copyright 2024 Spotspot Ltd. (T/A Bouncepad) all rights reserved. Confidential, no part of this publication may be reproduced or transmitted in any form without the written permission of the copyright holder.

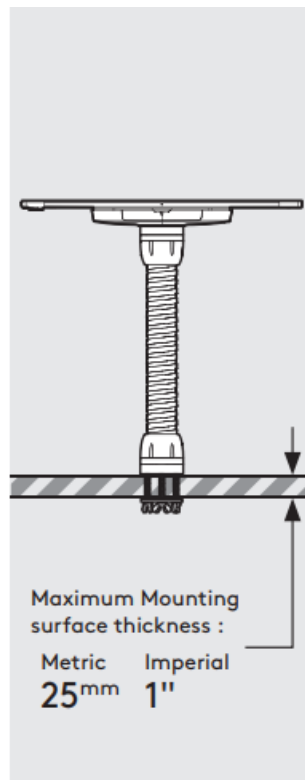


In the Box

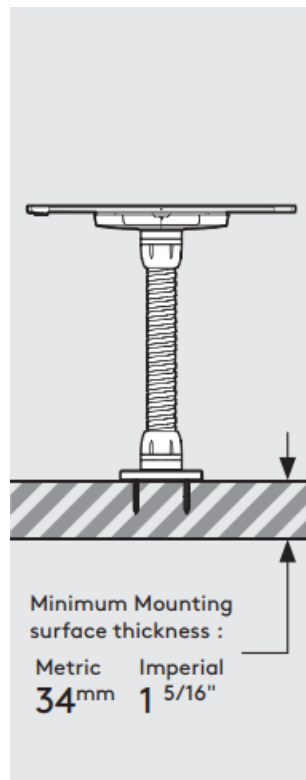


Fixings List

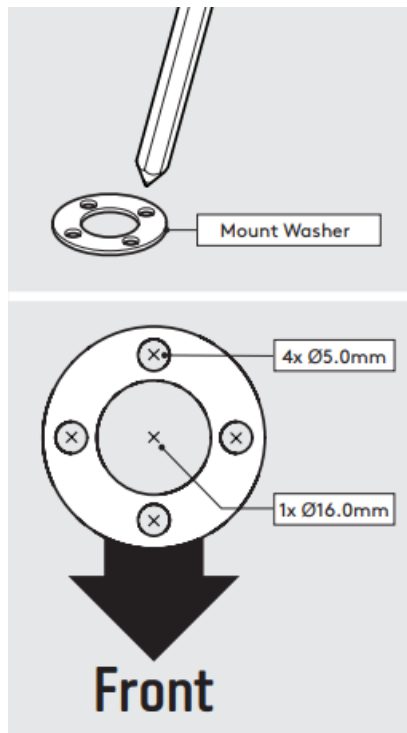
Due to the modular nature of our product range you may receive additional fixings in the fixings kit



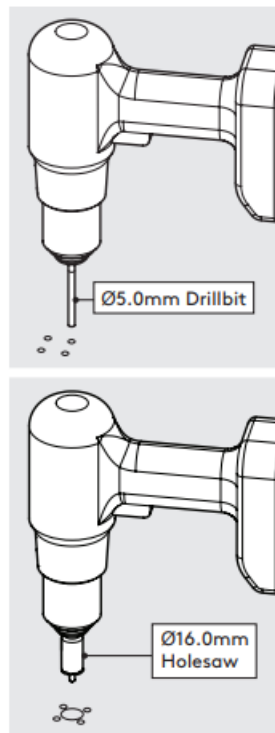
- Follow steps A if “Fixing from below”.



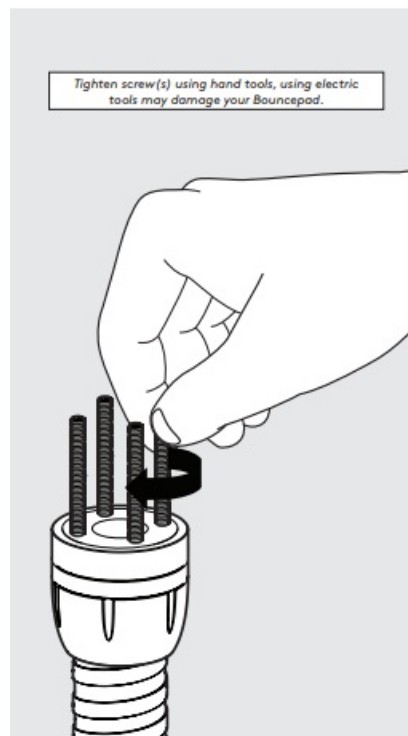
- Follow steps B if “Fixing from Above”.



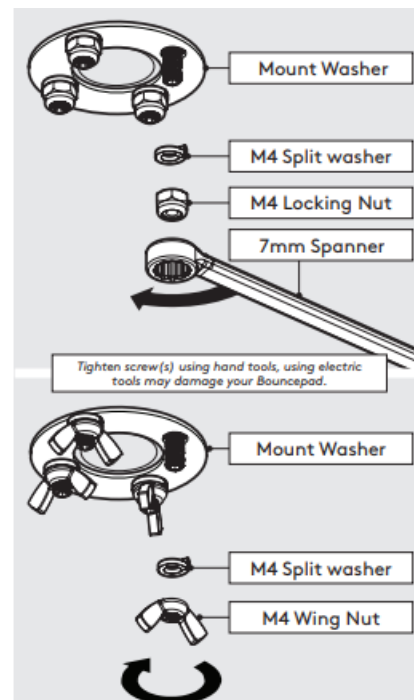
- Using the Mount washer, mark the drill hole locations.



- Drill each hole – using the specified drill.



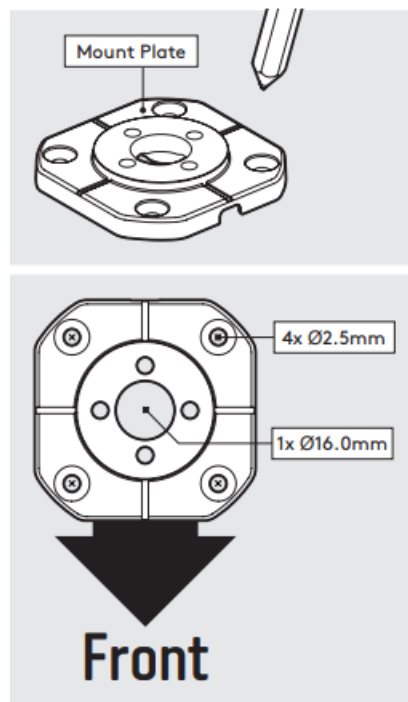
- Locate & screw the Socket screws into the Desk as shown



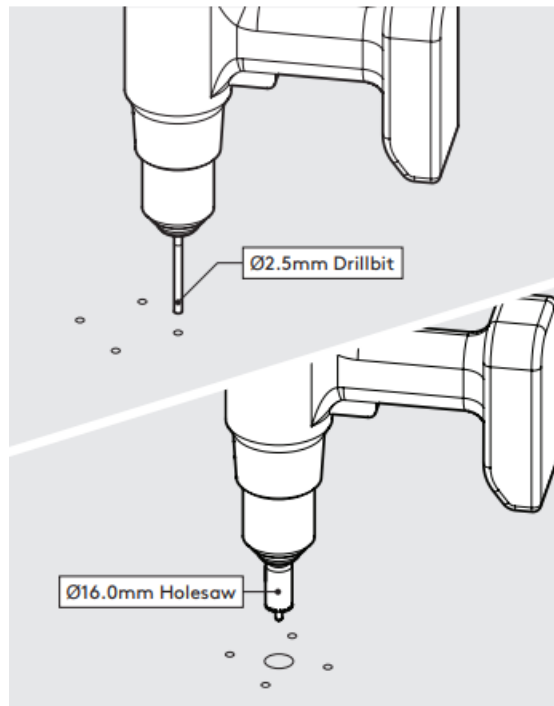
- Secure the arm to the surface. Locking Nuts offer higher security.

*see overleaf

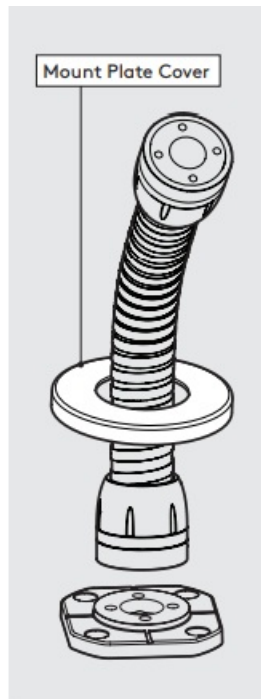
- Go to step 1.



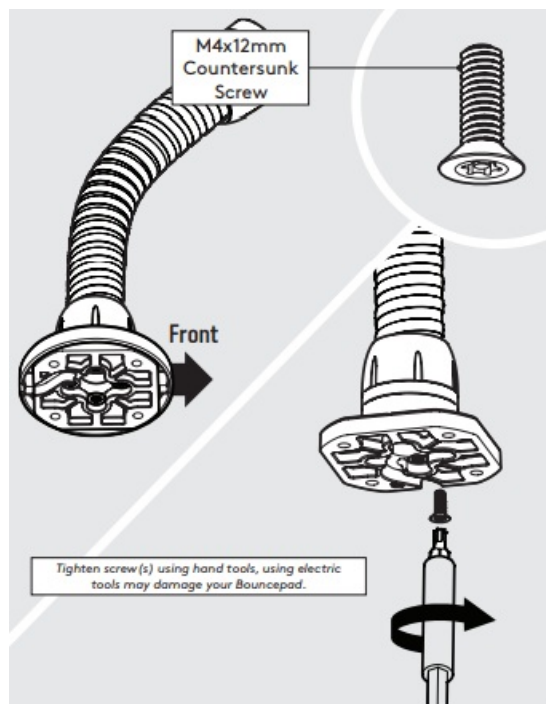
- Using the Mount Plate, mark the drill hole locations as shown.



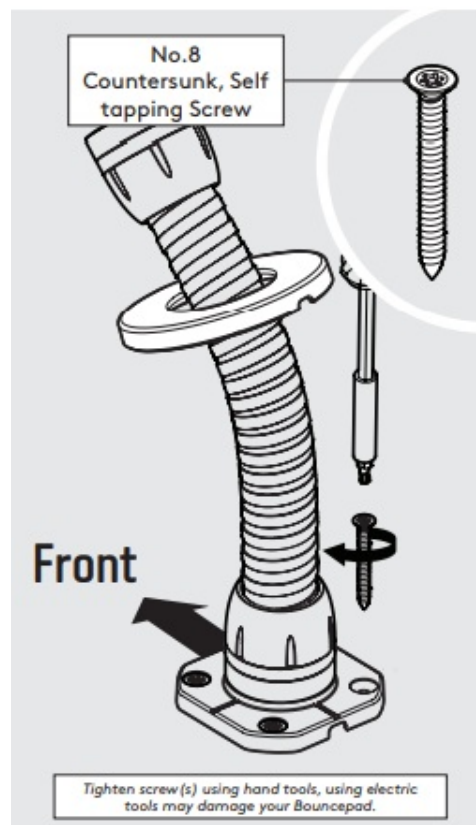
- Drill each hole – using the specified drill sizes.



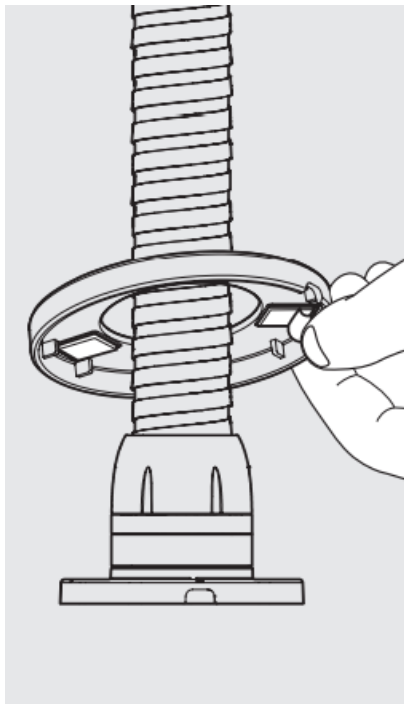
- Locate the Cover onto the Flex.



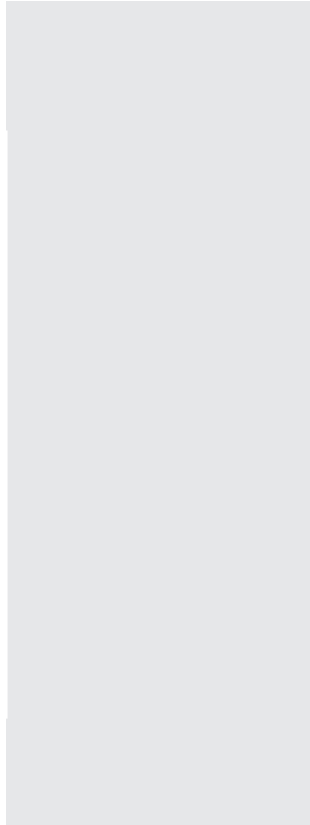
- Join the Flex Arm & Mount Plate in the orientation shown.



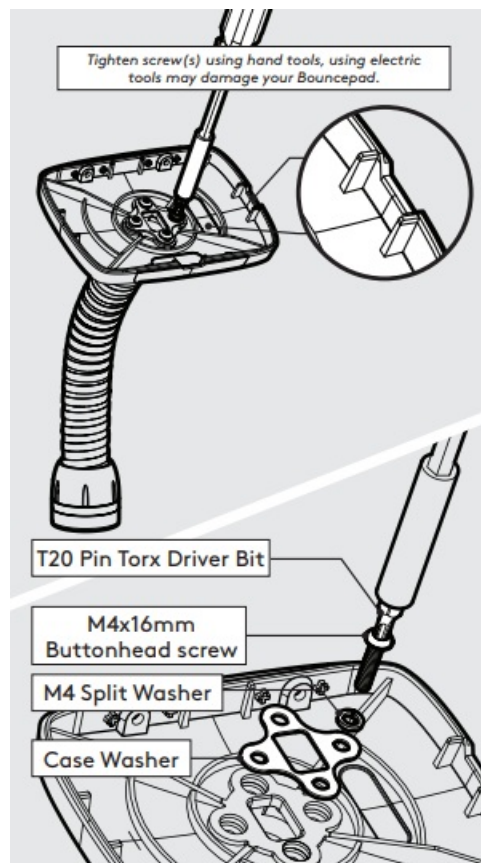
- Secure the Flex to the surface with the 4x countersunk fixings.



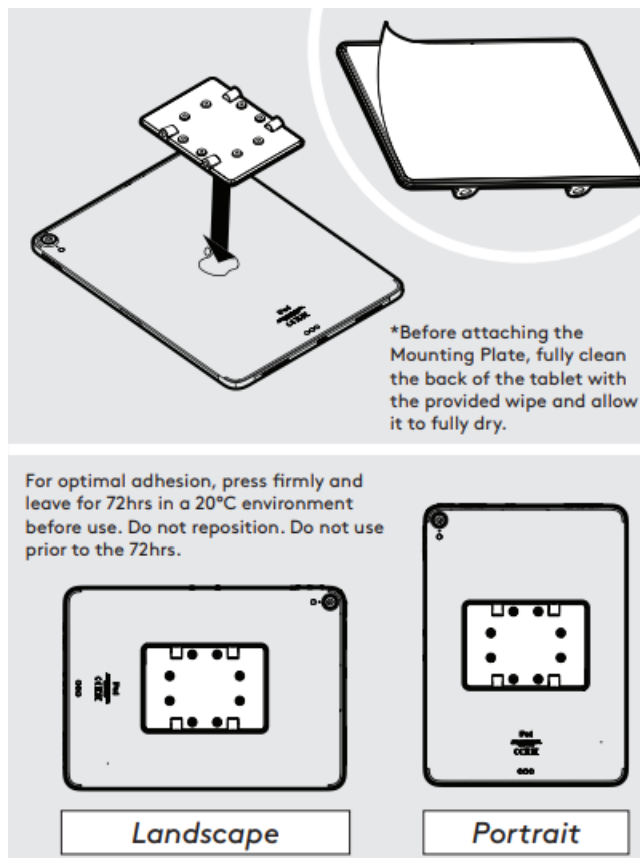
- Adhere the Mount Cover onto the Mount Plate with the adhesive tabs.



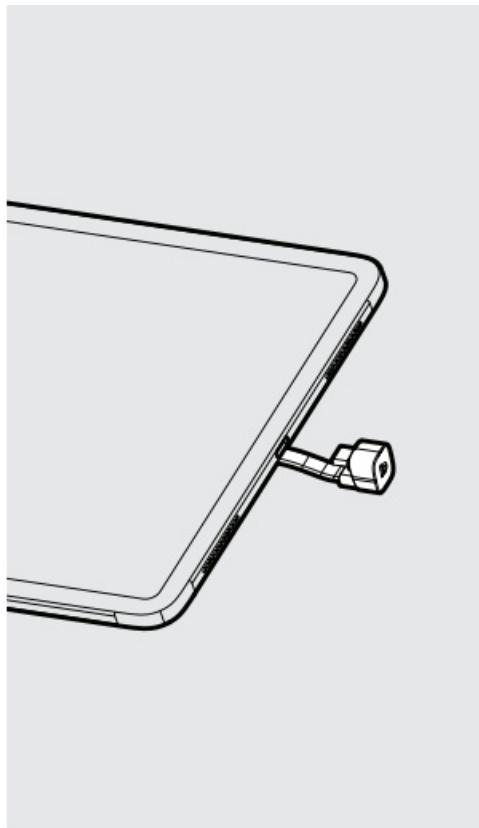
- Go to step 1.



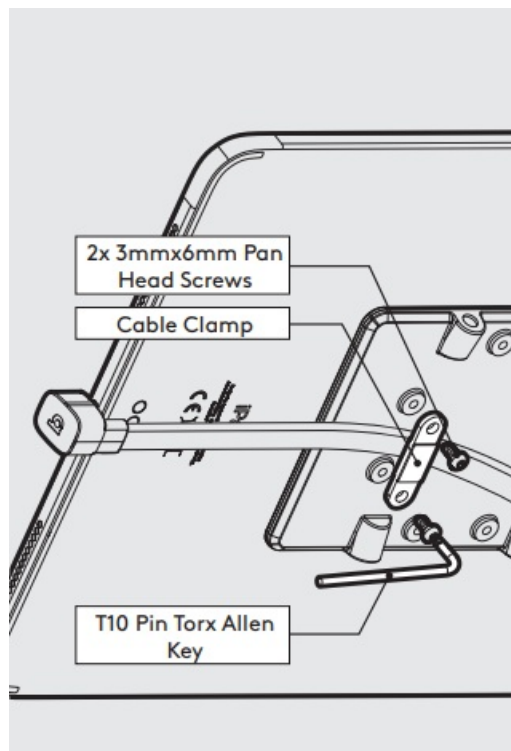
1. Locate & attach the Shell to the Flex in the correct orientation.



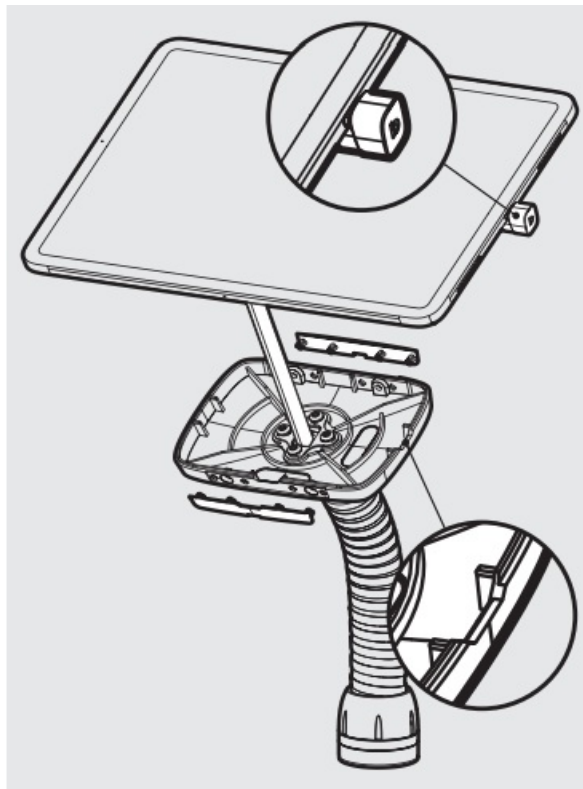
2. Remove the Mounting Plate adhesive backing. Attach level & centrally to the Tablet back as shown.



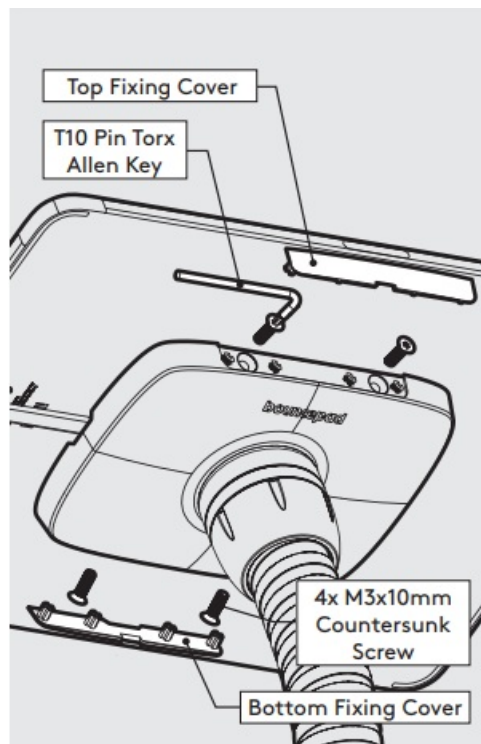
3. Attach the Flat Cable to the Tablet with the U-Bend Head.



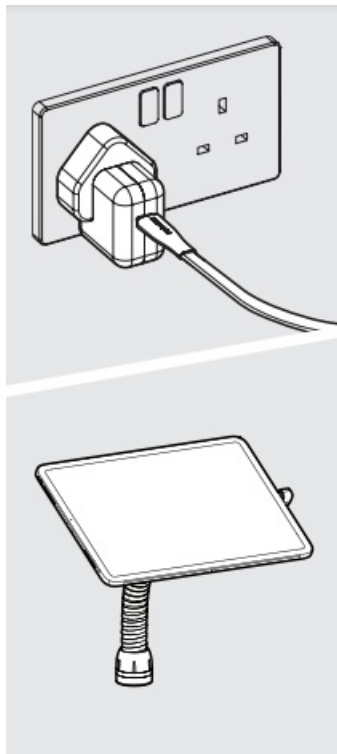
4. Secure the Flat Cable to the Mounting Plate with the Cable Clamp as shown.



5. Remove the Fixing Covers. Feed the Flat Cable into the assembly & locate the Tablet in the chosen orientation.
- 6.

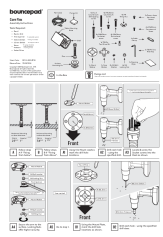


Secure the Tablet to the Shell & attach the Fixing Covers as shown.



7. Connect tablet to power & installation is now complete.

Documents / Resources

	<p>bouncepad BP-COR-FLX-W Core Flex [pdf] Installation Guide BP-COR-FLX-W, BP-COR-FLX-B, BP-COR-FLX-W Core Flex, BP-COR-FLX-W, Core Flex, Flex</p>
---	--

References

- [User Manual](#)

Manuals+. [Privacy Policy](#)

This website is an independent publication and is neither affiliated with nor endorsed by any of the trademark owners. The "Bluetooth®" word mark and logos are registered trademarks owned by Bluetooth SIG, Inc. The "Wi-Fi®" word mark and logos are registered trademarks owned by the Wi-Fi Alliance. Any use of these marks on this website does not imply any affiliation with or endorsement.