

**bouncepad**

bouncepad BP-  
COR-FLP-W Core  
Flip



## bouncepad BP-COR-FLP-W Core Flip Installation Guide

[Home](#) » [bouncepad](#) » bouncepad BP-COR-FLP-W Core Flip Installation Guide 

### Contents

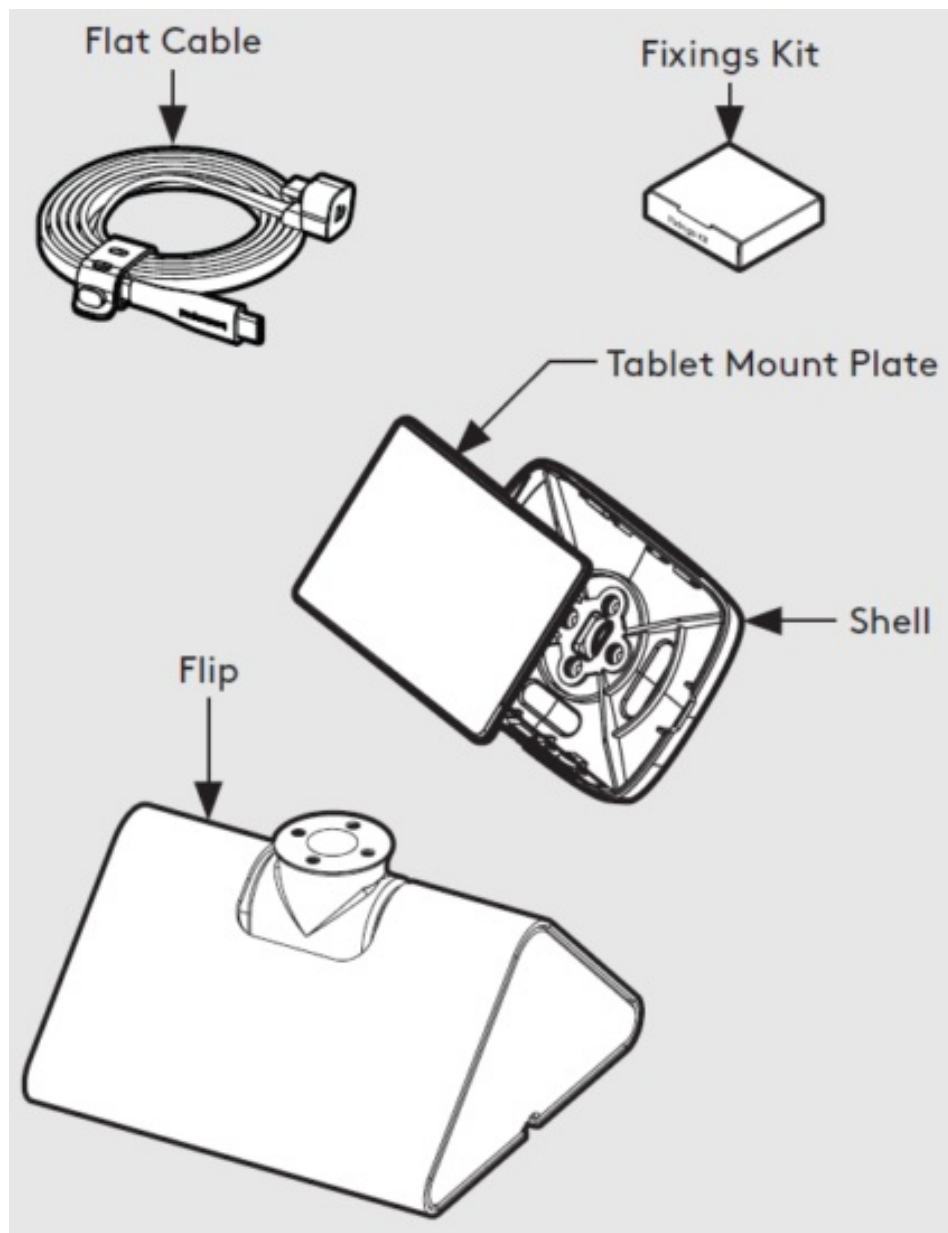
- [1 bouncepad BP-COR-FLP-W Core Flip](#)
- [2 In the Box](#)
- [3 Fixings List](#)
- [4 Installation](#)
- [5 Documents / Resources](#)
  - [5.1 References](#)

**bouncepad**®

### bouncepad BP-COR-FLP-W Core Flip

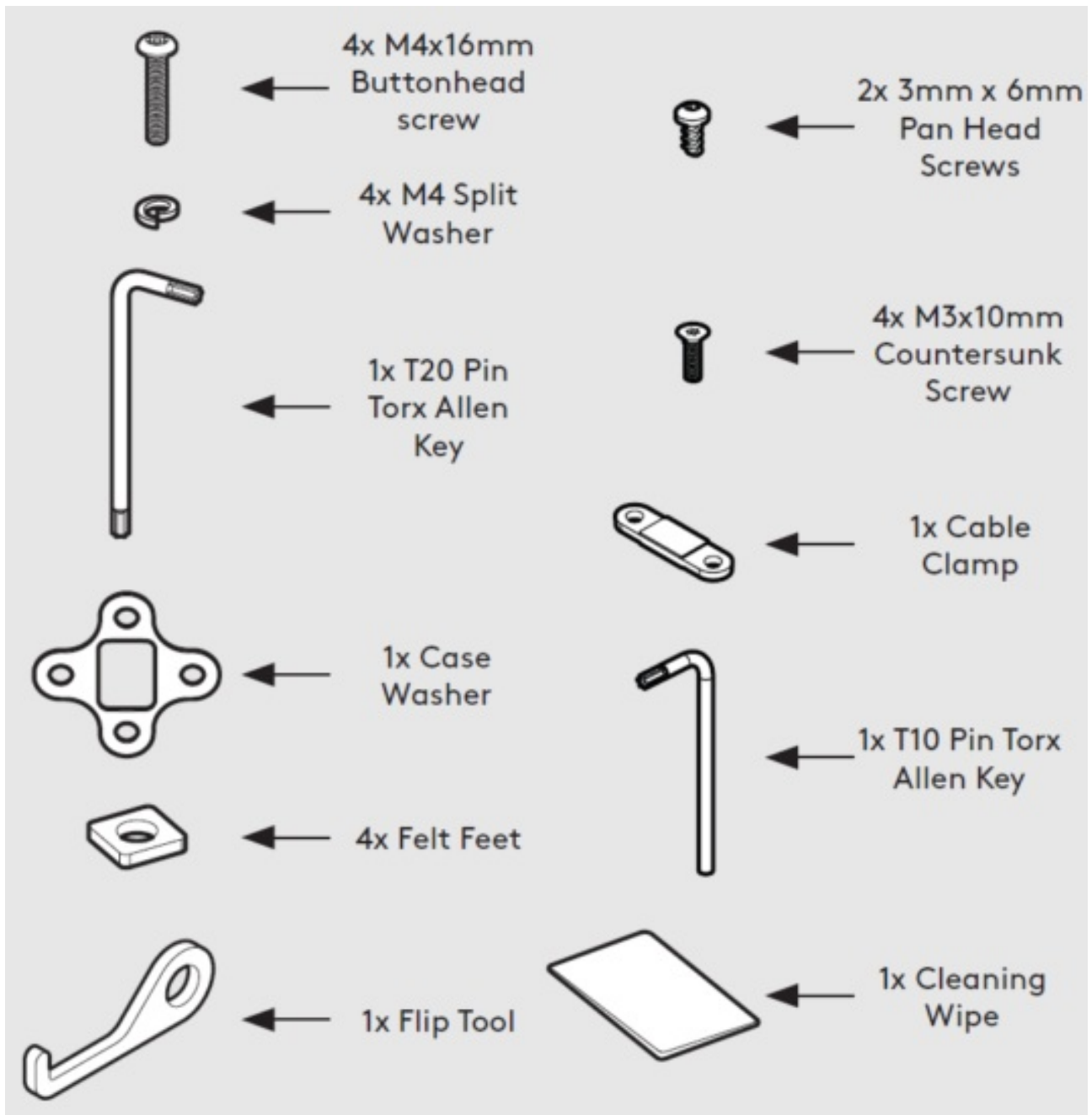


### In the Box



## Fixings List

Due to the modular nature of our product range you may receive additional fixings in the fixings kit



### Tools Required:

All tools provided

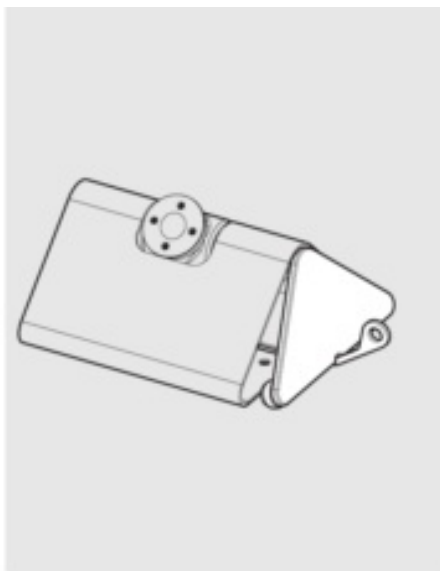
Sheet Code: BP-IM-081\_REV0

Release Date: 07/08/2024

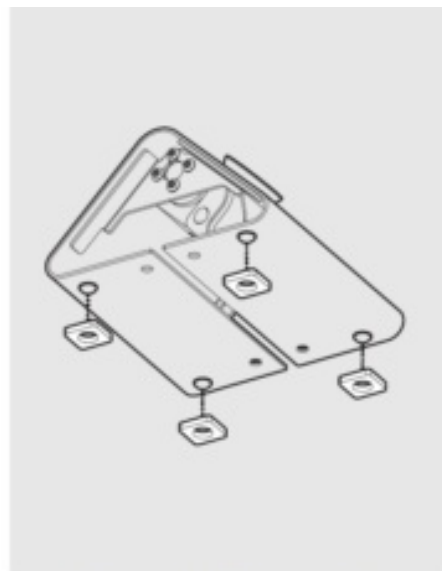
Copyright 2024 Spotspot Ltd. (T/A Bouncepad) all rights reserved.

Confidential, no part of this publication may be reproduced or transmitted in any form without the written permission of the copyright holder.

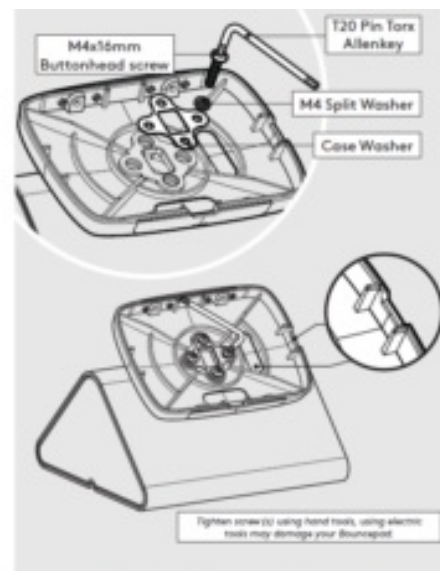
### Installation



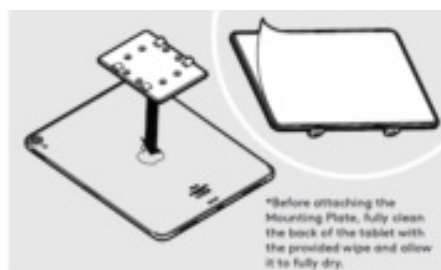
- 1** Remove the End Plates from the Flip using the supplied tool.



- 2** If wishing to slide your Flip across your mounting surface, apply the supplied Felt Feet as shown.



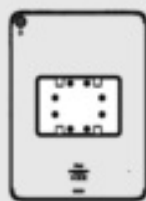
- 3** Attach the Shell to the Flip. Take care to ensure correct & full thread engagement.



For optimal adhesion, press firmly and leave for 72hrs in a 20°C environment before use. Do not reposition. Do not use prior to the 72hrs.

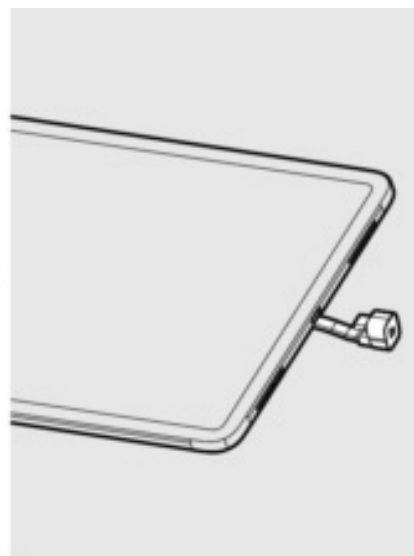


Landscape

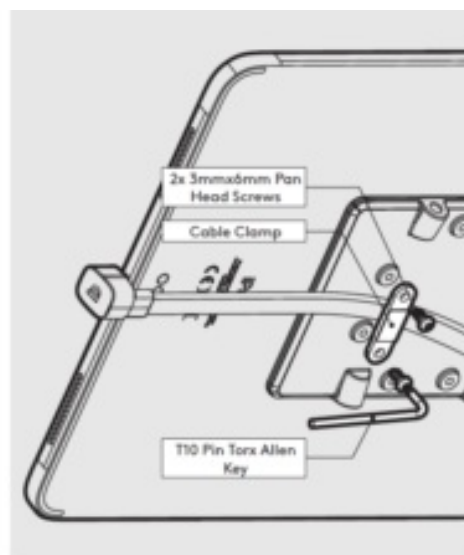


Portrait

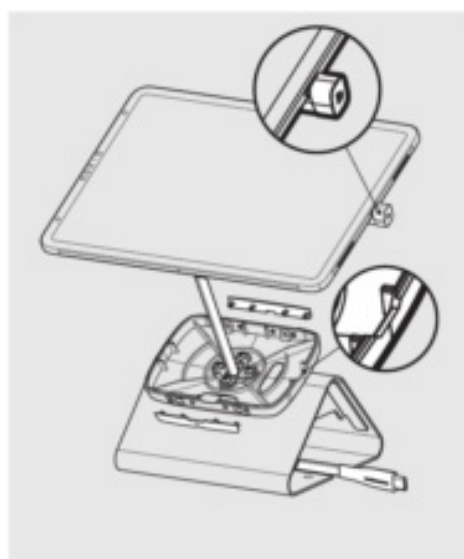
- 4** Remove the Mounting Plate adhesive backing. Attach level & centrally to the Tablet back as shown.



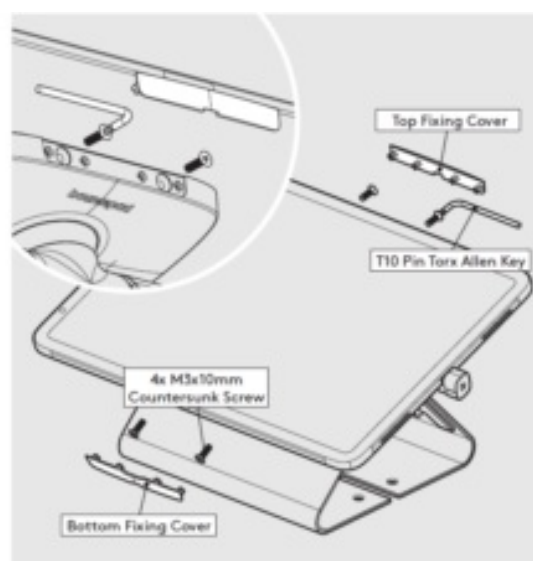
- 5** Attach the Flat Cable to the Tablet with the U-Bend Head.



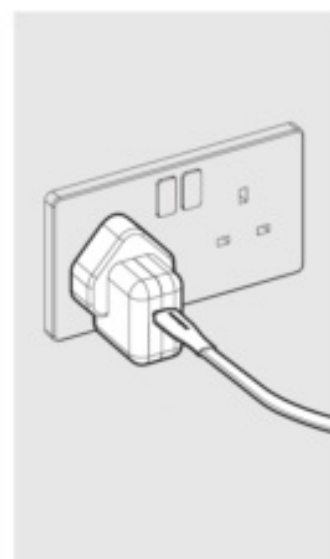
- 6** Secure the Flat Cable to the Mounting Plate with the Cable Clamp as shown.



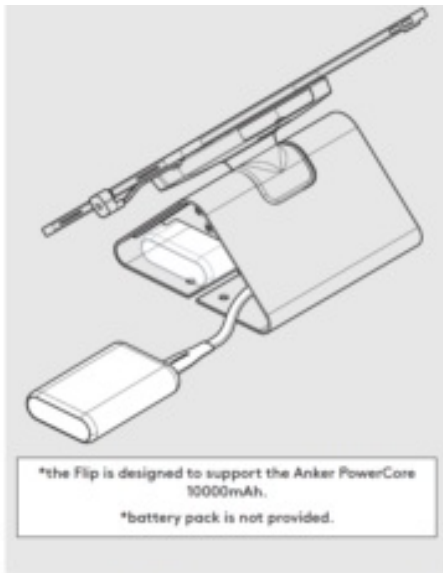
- 7** Remove the Fixing Covers. Feed the Flat Cable into the assembly & locate the Tablet in the chosen orientation.



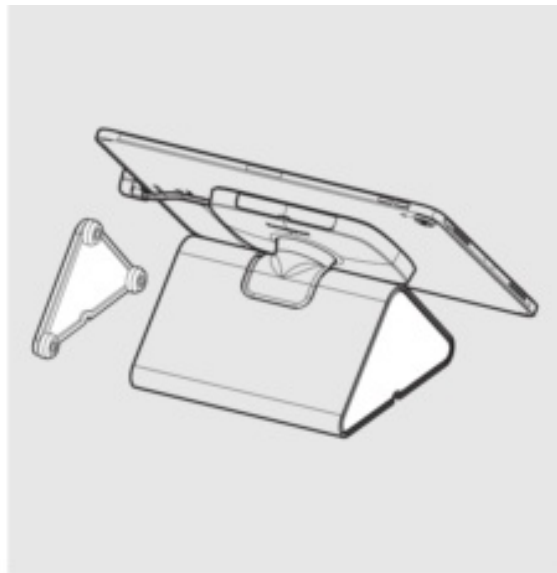
- 8** Secure the Tablet to the Shell & attach the Fixing Covers as shown.



- 9A** Connect the tablet power cable to its mains power source.



**9B** If installing a battery pack, connect the tablet cable & locate the pack into the Flip.

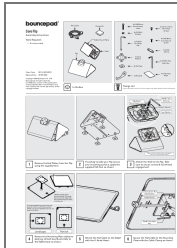


**10** Locate the Flip End Plates onto the Flip Base.



**11** Installation is now complete.

## Documents / Resources



[bouncepad BP-COR-FLP-W Core Flip](#) [pdf] Installation Guide  
BP-COR-FLP-W, BP-COR-FLP-B, BP-COR-FLP-W Core Flip, BP-COR-FLP-W, Core Flip, Flip

## References

- [User Manual](#)

[Manuals+](#), [Privacy Policy](#)

This website is an independent publication and is neither affiliated with nor endorsed by any of the trademark owners. The "Bluetooth®" word mark and logos are registered trademarks owned by Bluetooth SIG, Inc. The "Wi-Fi®" word mark and logos are registered trademarks owned by the Wi-Fi Alliance. Any use of these marks on this website does not imply any affiliation with or endorsement.