



bouncepad BP-COR-CF-W Core Counter Flex Installation Guide

[Home](#) » [bouncepad](#) » bouncepad BP-COR-CF-W Core Counter Flex Installation Guide 

bouncepad[®] Core Counter Flex Assembly Instructions

Contents

- [1 BP-COR-CF-W Core Counter Flex](#)
- [2 In the Box](#)
- [3 Fixings List](#)
- [4 Documents / Resources](#)
 - [4.1 References](#)

BP-COR-CF-W Core Counter Flex

Tools Required:

- Socket Driver

Sheet Code: BP-IM-088_REV0

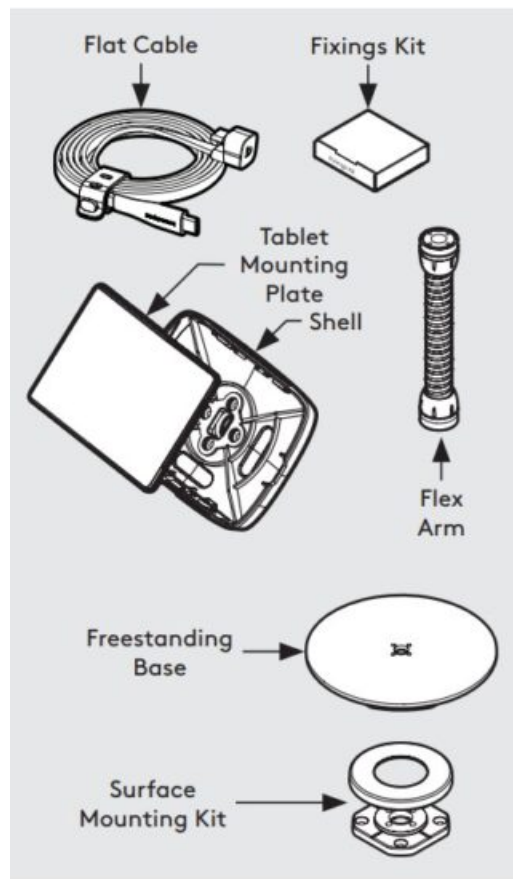
Release Date: 14/08/2024

Copyright2024 Spotsport Ltd. (T/A Bouncepad) all rights reserved.

Confidential, no part of this publication may be reproduced or transmitted in any form without the written permission of the copyright holder.

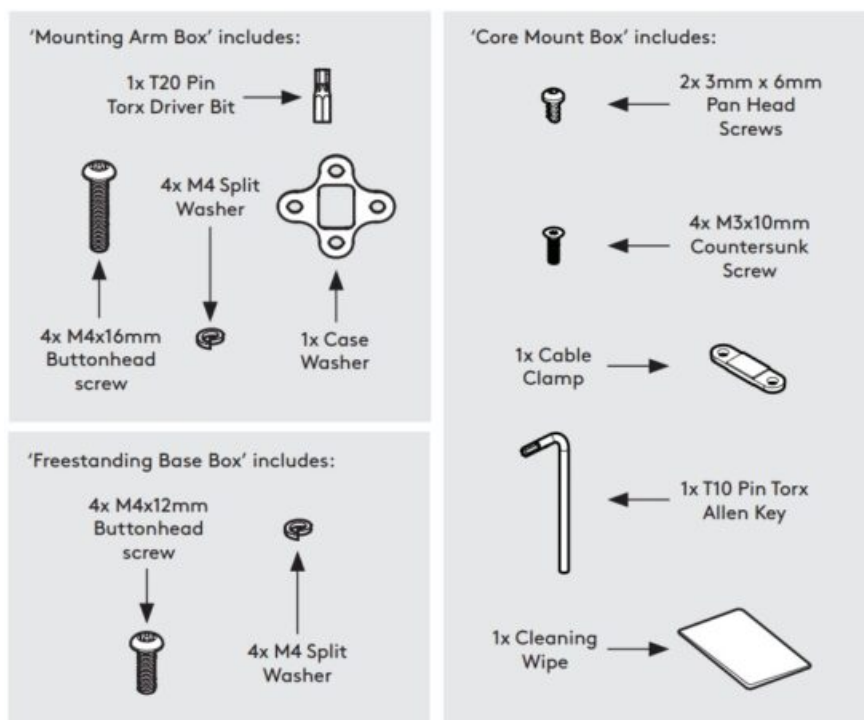


In the Box

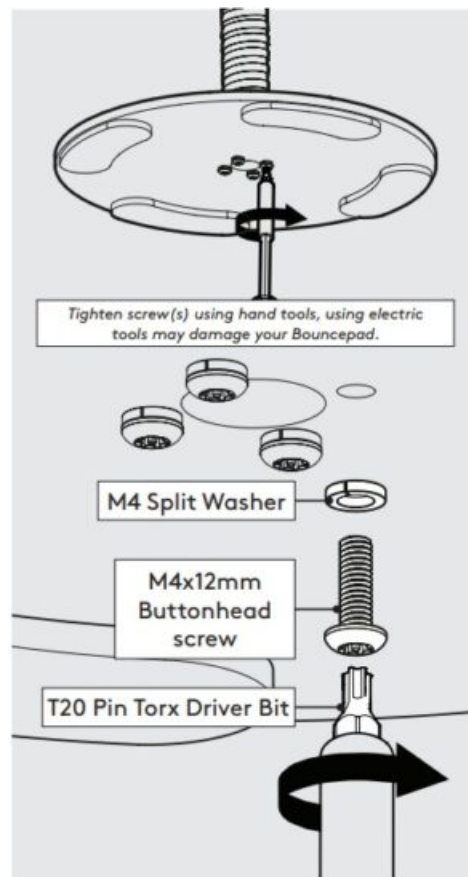


Fixings List

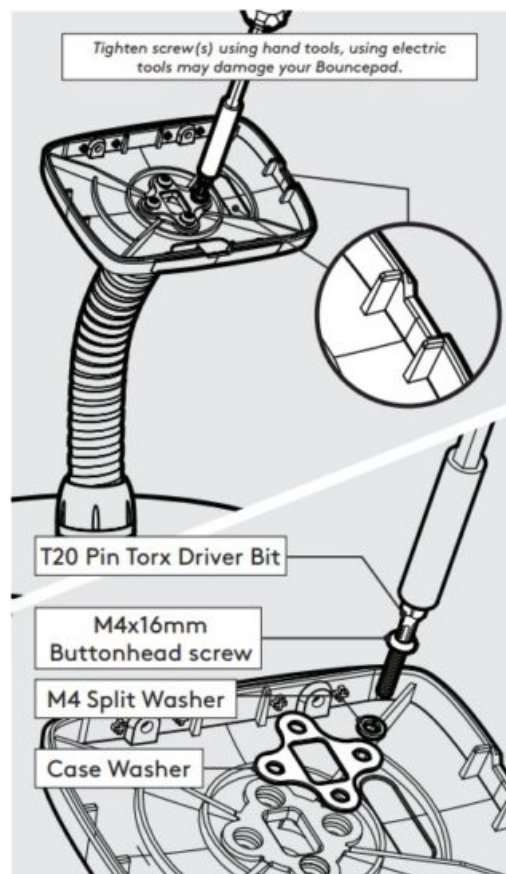
* Due to the modular nature of our product range you may receive additional fixings in the fixings kit



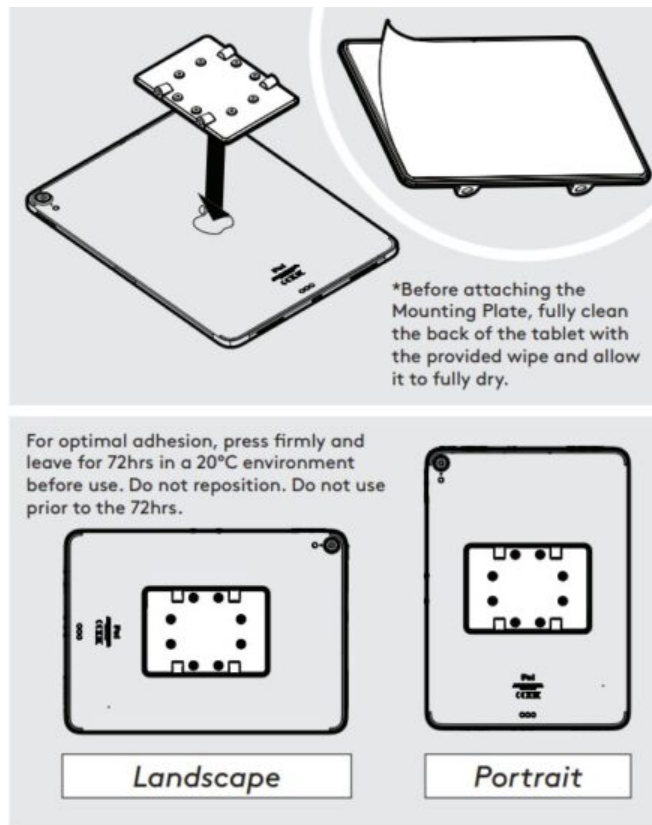
1. Locate & secure the Flex Mounting Arm to the Freestanding Base.



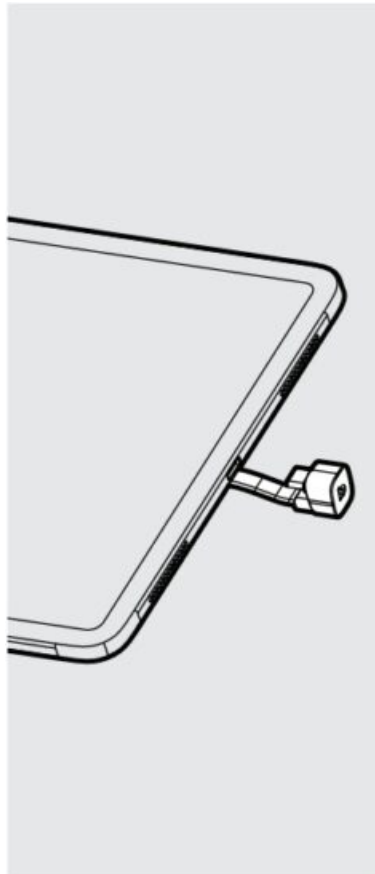
2. Locate & attach the Shell to the Flex in the correct orientation.



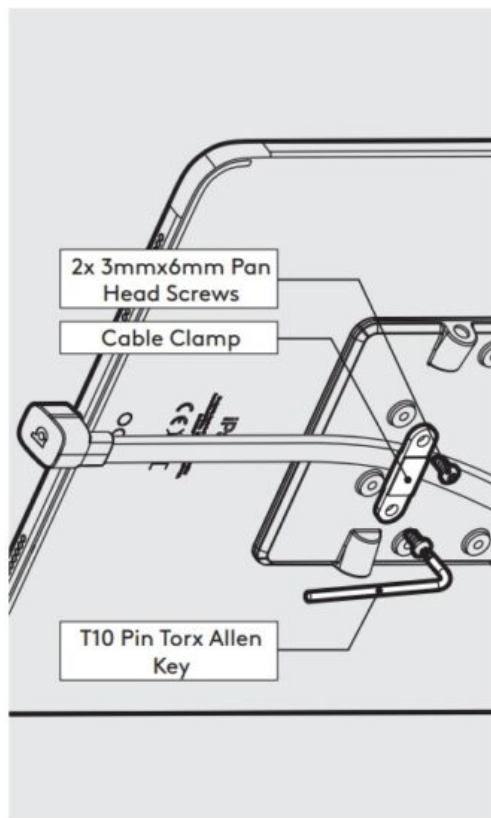
3. Remove the Mounting Plate adhesive backing. Attach level & centrally to the Tablet back as shown.



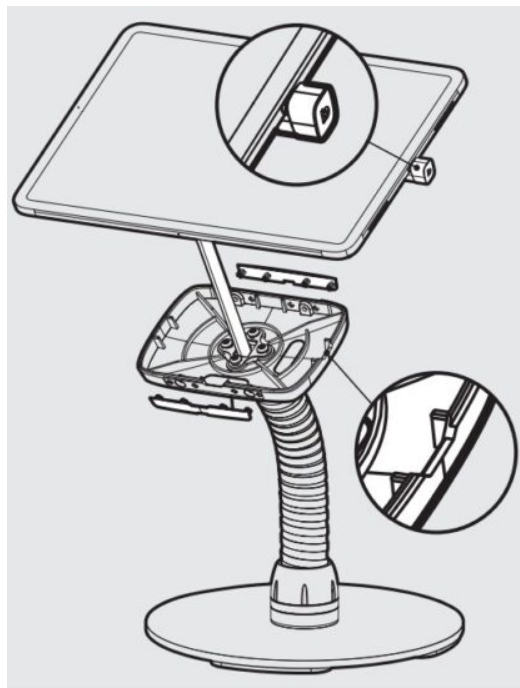
4. Attach the Flat Cable to the Tablet with the U-Bend Head.



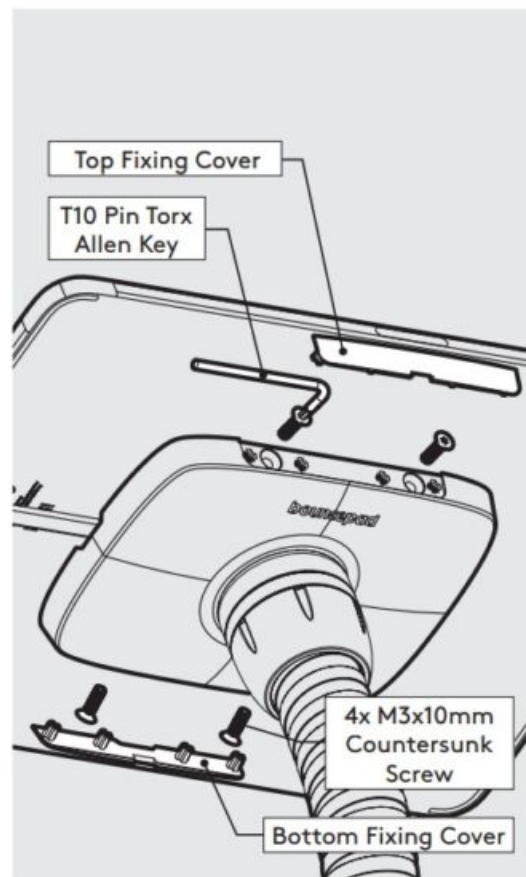
5. Secure the Flat Cable to the Mounting Plate with the Cable Clamp as shown.



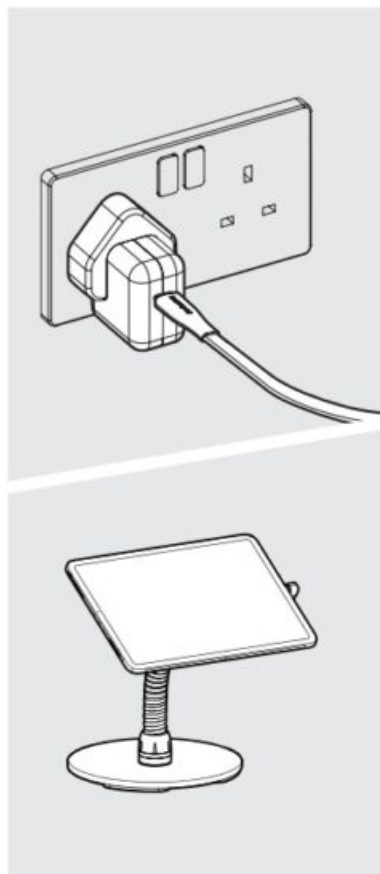
6. Remove the Fixing Covers. Feed the Flat Cable into the assembly & locate the Tablet in the chosen orientation.



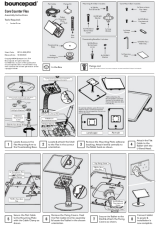
7. Secure the Tablet to the Shell & attach the Fixing Covers as shown.



8. Connect tablet to power & installation is now complete.



bouncepad®



[bouncepad BP-COR-CF-W Core Counter Flex](#) [pdf] Installation Guide
BP-COR-CF-W, BP-COR-CF-B, BP-COR-CF-W Core Counter Flex, BP-COR-CF-W, Core Count
er Flex, Counter Flex, Flex

References

- [User Manual](#)

Manuals+, Privacy Policy

This website is an independent publication and is neither affiliated with nor endorsed by any of the trademark owners. The "Bluetooth®" word mark and logos are registered trademarks owned by Bluetooth SIG, Inc. The "Wi-Fi®" word mark and logos are registered trademarks owned by the Wi-Fi Alliance. Any use of these marks on this website does not imply any affiliation with or endorsement.