



## bouncepad BP-COR-C6-W Core Counter 60 Installation Guide

[Home](#) » [bouncepad](#) » bouncepad BP-COR-C6-W Core Counter 60 Installation Guide 

# bouncepad<sup>®</sup>

Core Counter 60  
Assembly Instructions

### Contents

- [1 Tools Required:](#)
- [2 In the Box](#)
- [3 Fixings List](#)
- [4 Documents / Resources](#)
  - [4.1 References](#)
- [5 Related Posts](#)

### Tools Required:

- Socket Driver

Sheet Code: BP-IM-087\_REV0

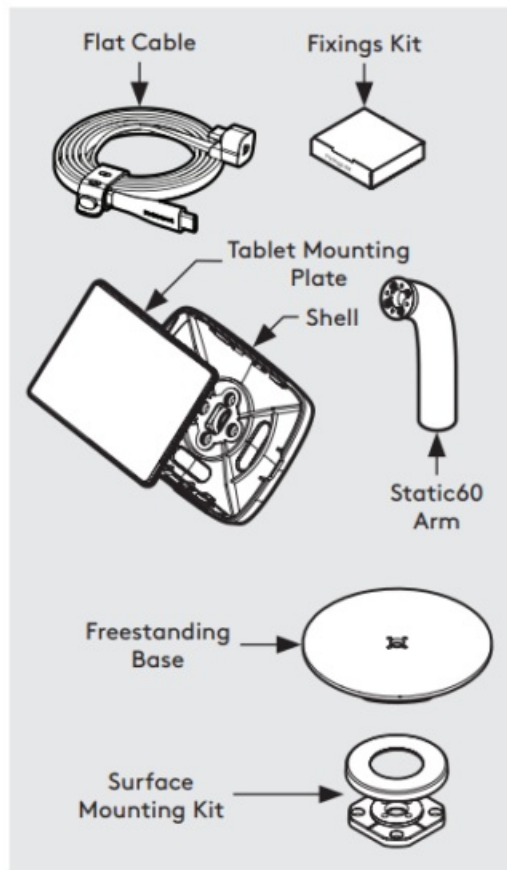
Release Date: 14/08/2024

Copyright 2024 Spotspot Ltd. (T/A Bouncepad) all rights reserved.

Confidential, no part of this publication may be reproduced or transmitted in any form without the written permission of the copyright holder.

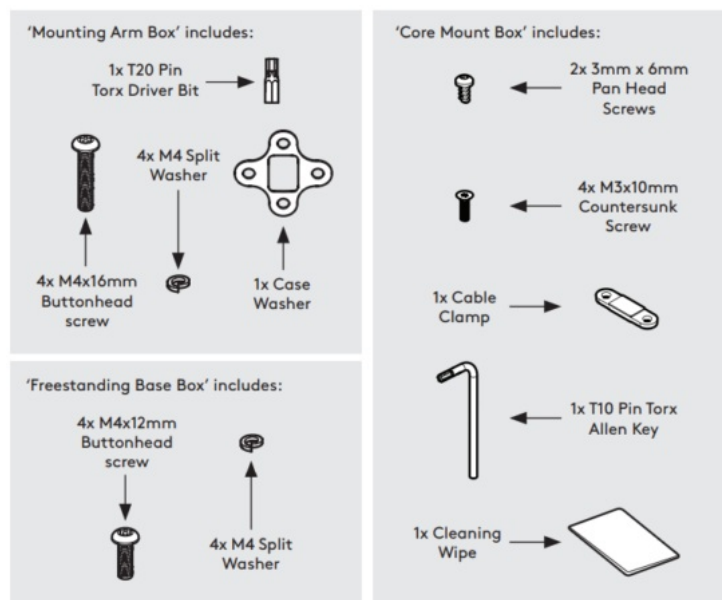


**In the Box**

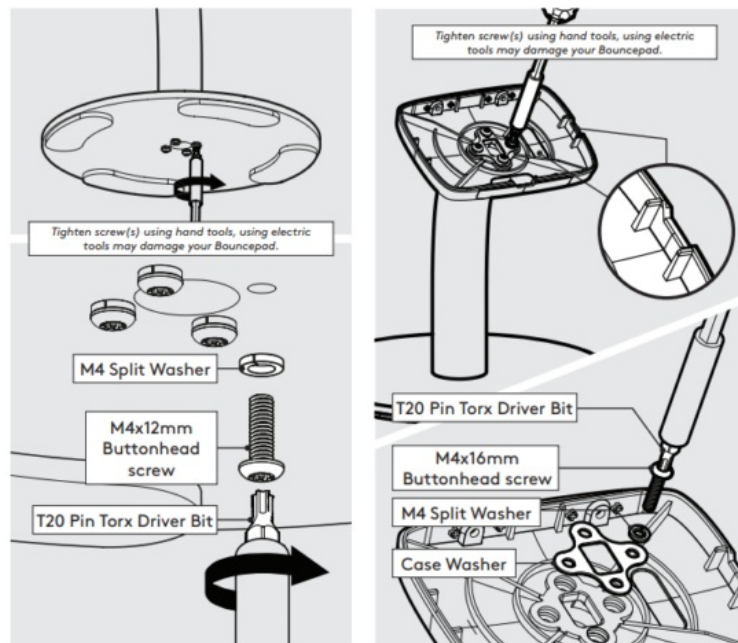


## Fixings List

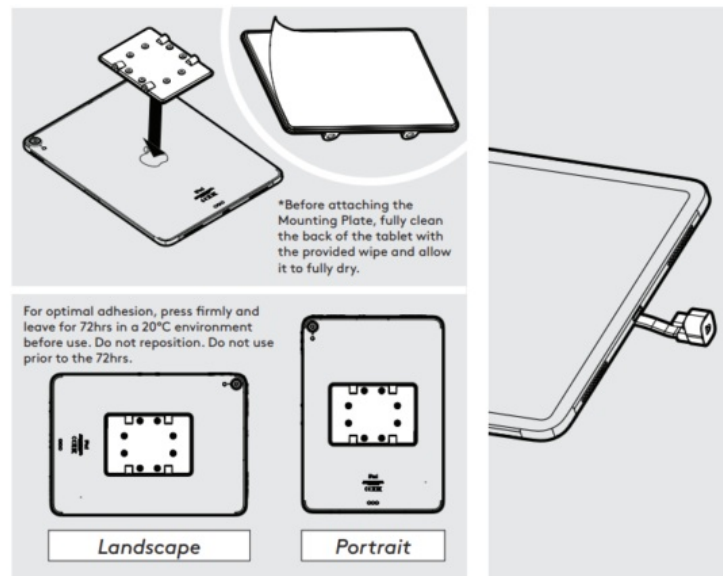
\* Due to the modular nature of our product range you may receive additional fixings in the fixings kit



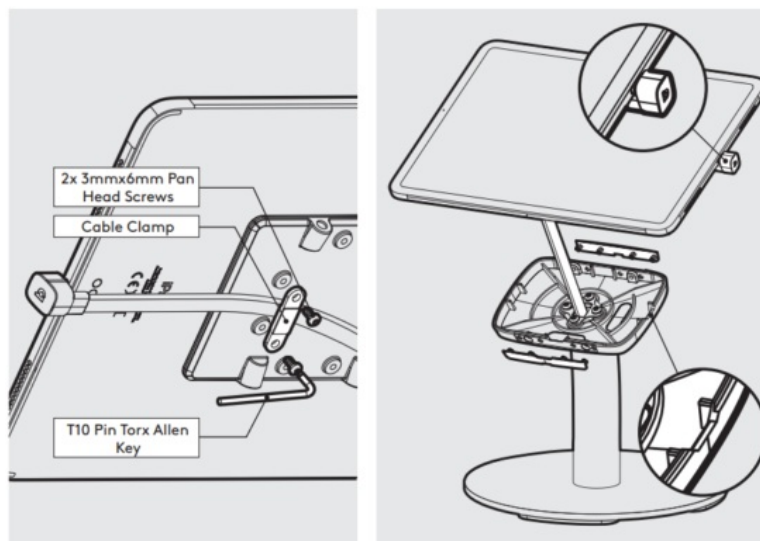
1. Locate & secure the Static60 Mounting Arm to the Freestanding Base.
2. Locate & attach the Shell to the Static60 in the correct orientation.



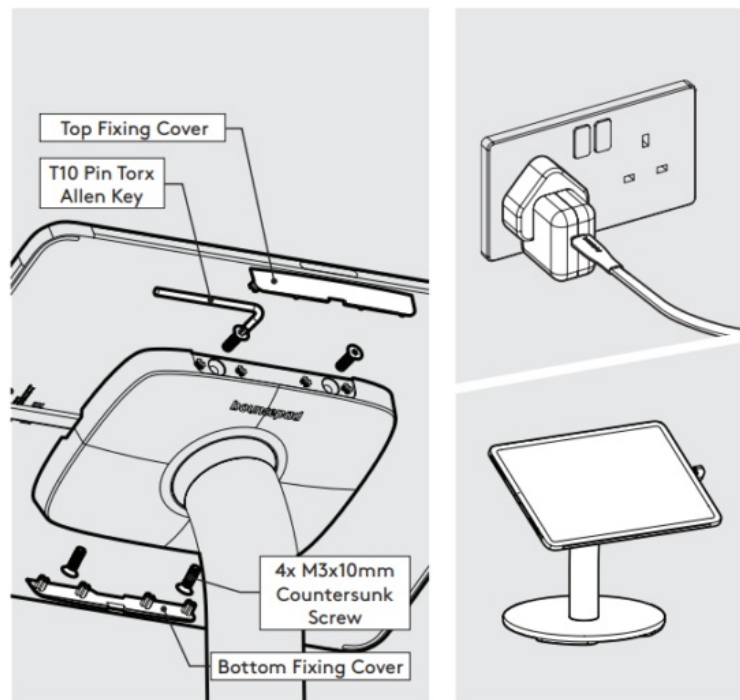
3. Remove the Mounting Plate adhesive backing. Attach level & centrally to the Tablet back as shown.
4. Attach the Flat Cable to the Tablet with the U-Bend Head.



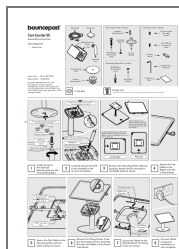
5. Secure the Flat Cable to the Mounting Plate with the Cable Clamp as shown.
6. Remove the Fixing Covers. Feed the Flat Cable into the assembly & locate the Tablet in the chosen orientation.



7. Secure the Tablet to the Shell & attach the Fixing Covers as shown.
8. Connect tablet to power & installation is now complete.



## Documents / Resources



[bouncepad BP-COR-C6-W Core Counter 60](#) [pdf] Installation Guide  
BP-COR-C6-W, BP-COR-C6-B, BP-COR-C6-W Core Counter 60, BP-COR-C6-W, Core Counter 60, Counter 60, 60

## References

- [User Manual](#)

[Manuals+](#), [Privacy Policy](#)

This website is an independent publication and is neither affiliated with nor endorsed by any of the trademark owners. The "Bluetooth®" word mark and logos are registered trademarks owned by Bluetooth SIG, Inc. The "Wi-Fi®" word mark and logos are registered trademarks owned by the Wi-Fi Alliance. Any use of these marks on this website does not imply any affiliation with or endorsement.