



## BOULT Z40 Ultra 35dB ANC Touch Control and Dual Device User Manual

[Home](#) » [BOULT](#) » BOULT Z40 Ultra 35dB ANC Touch Control and Dual Device User Manual 

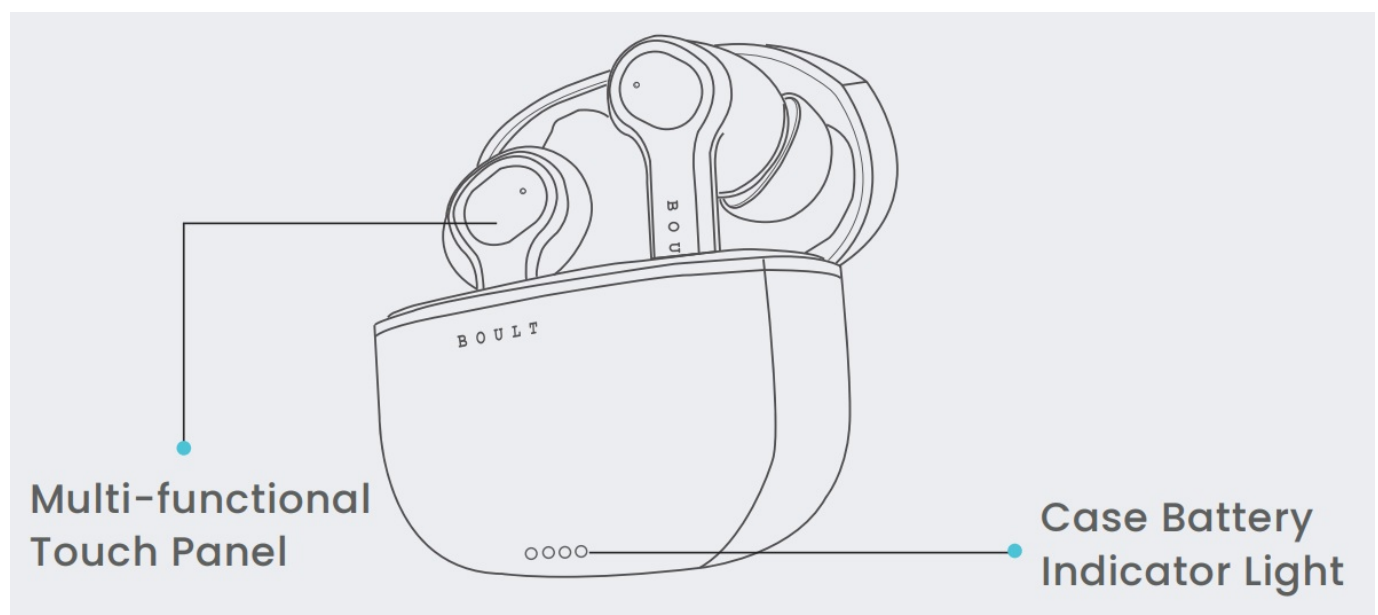
BOULT Z40 Ultra 35dB ANC Touch Control and Dual Device



## Contents

- 1 Know your Z40 Ultra
- 2 Whats In the Box?
- 3 Product specification
- 4 How to use your Z40 Ultra?
- 5 Pairing
- 6 Dual Device Connectivity
- 7 Bluetooth Lost
- 8 Reset
- 9 Voice Prompts
- 10 Maintenance Instructions
- 11 Documents / Resources
- 11.1 References

## Know your Z40 Ultra



### Sonic Core Dynamic™ – Hardware accelerated audio processing

- Accurate & superior Noise cancellation
- Low power consumption
- Intelligent voice recognition
- Exceptionally clear and detailed sound

### rism Voice PLC™ – AI powered lag free conversation

- Immersive gaming
- Enhanced call quality & seamless virtual VoIP meetings

### Dual Stream DSP™ – Simultaneous dual instruction audio processing

- Swift and synchronous audio transfer
- Adaptive audio equalization

## Whats In the Box?

Charging Case  
Earbuds  
Type C Charging Cable  
Extra pair of ear tips  
Warranty Card  
How to turn ON ANC steps card

## Product specification

**Product Name** – TWS Bluetooth Headset

**Model** – Boulton Audio AirBass

**Speaker** – 10mm

**Bluetooth Range** – ~10m/33ft (without any obstacles)

**Earbuds Charging Time** – 90 mins

**Frequency Range** – 20Hz – 20KHz

**Technology** – HFP/HSP/A2Dp/AVRCP

**Input** – DC5V = 1A

## How to use your Z40 Ultra?

### Touch Controls

The Touch Area (Multi-Functional Touch Panel) is located in the upper part of the earbuds handle.

### Wearing Earbuds

The earbud marked with L is worn on the left ear and the earbud marked with R is worn on the right ear

### Power ON/OFF:

Power ON:

**Auto:** Open the charging case and take out the earbuds to Power ON.

**Manually:** Tap and hold the multifunction button (MFB) for 3 seconds.

### Power OFF

**Auto:** Place both the earbuds in the charging case, close the lid.

**Manually:** Hold MFB for 5 seconds.

Noise Cancellation Modes: Press the right MFB for 2s to switch between ANC mode, Transparency mode or Normal mode

<b>Play/Pause</b> Tap the MFB once	<b>Voice Assistant –</b> Press the left MFB for 2s
<b>Next Track</b> Double Tap the right MFB	<b>Answer the Call</b> Tap the MFB once
<b>Previous Track</b> Double Tap the left MFB	<b>End Call/Reject</b> Double Tap the MFB
<b>Volume +</b> Triple Tap the right MFB	<b>Game/Music Mode</b> Tap the Left MFB four times
<b>Volume –</b> Triple Tap the left MFB	<b>EQ modes</b> Tap Right MFB four times



## Pairing

Open the charging case, and take out the earbuds, the earbuds LEDs will start flashing automatically until paired with a device.

Activate Bluetooth on the device, turn on Bluetooth, search for pairing name “Boult Audio Airbass” and click on it.

Single Mode: When on dual mode, put one earbud into the charging case. Only take one earbud out of the charging case and connect it.

## Dual Device Connectivity

- Connect the Z40 Ultra with your first device. Once your Z40 Ultra is paired with the first device, turn off the Bluetooth of your first device.
- Now turn on the Bluetooth of your second device and follow the same steps to connect to your Z40 Ultra Bluetooth earbuds.
- Once Z40 Ultra is connected to your new device, turn on the Bluetooth of the first device.
- You will hear a sound again “Your earphones are now connected” which means both your devices are now connected to the Z40 Ultra earbuds.
- You can now enjoy music and take calls from both your connected devices on your Z40 Ultra earbuds.

## Bluetooth Lost

Bluetooth Lost: Turn off mobile phone's Bluetooth, earbuds will enter pairing mode and can pair with other devices. If the connection range is exceeded, the earbuds will enter back into connection mode. In case of no connection within 5 minutes, the earbuds will turn off.

## **Reset**

If your earbuds fail to pair, or only one works, reset them.

- Delete all "Boult Audio Airbass" Bluetooth records on the phone and turn off Bluetooth.
- Put earbuds in the charging case and then take out to pairing modes, tap L&R 7 times simultaneously, hear "DU" prompt voice to clear all pairing.
- Put earbuds back into the charging case.

## **Voice Prompts**

- You will hear 'power on' when the headset powers on.
- You will hear 'power off' when the headset powers off.
- You will hear 'connected' when the headset is paired.
- You will hear 'low battery' when the headset is in low power status
- You will hear 'gaming mode' when the headset is in gaming mode.

## **Maintenance Instructions**

Warranty is valid/invalid only basis of the below criteria:

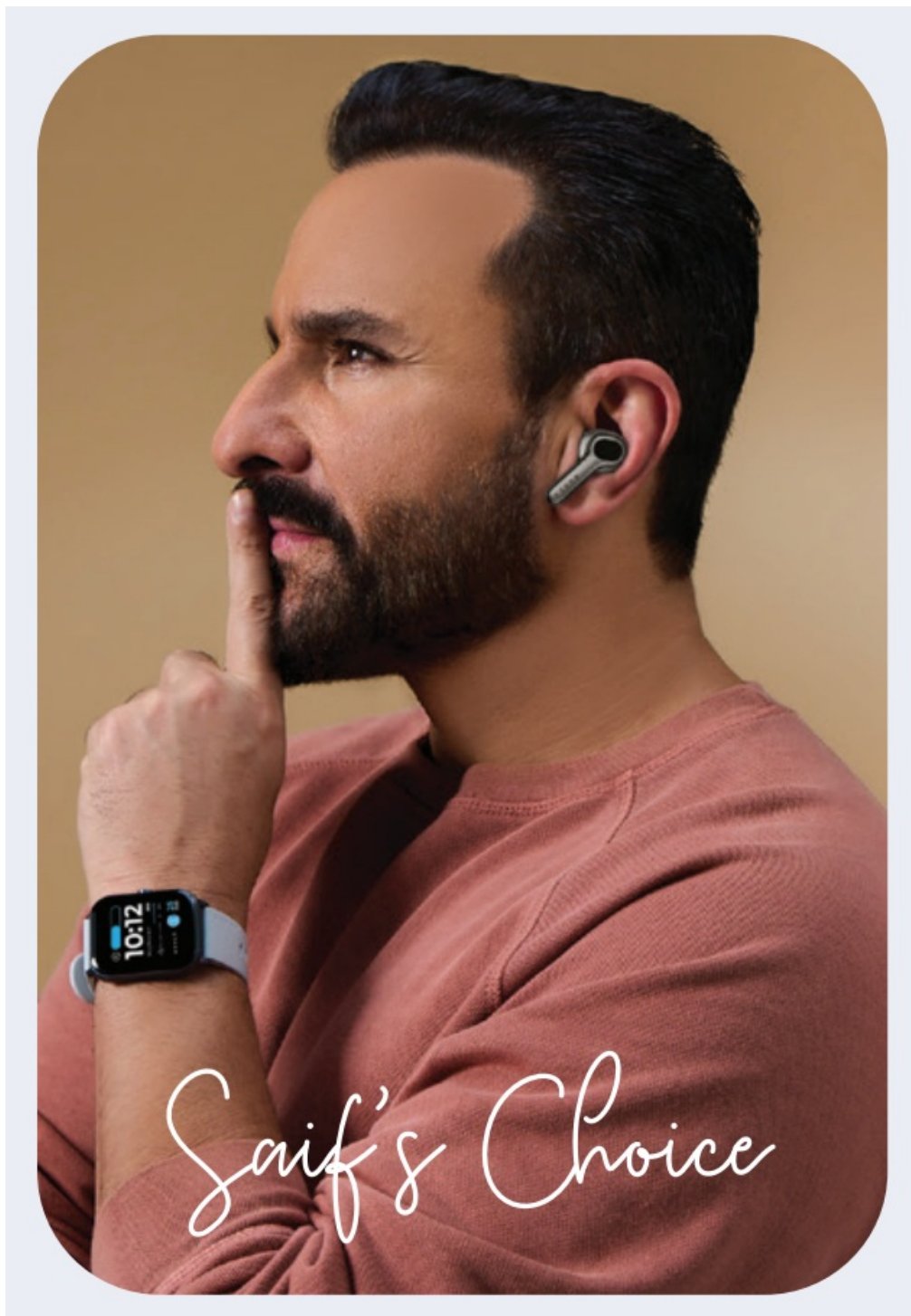
- The product should be purchased through legal and formal channels to be applicable for warranty.
- Damaging the product intentionally/unintentionally, or due to natural disasters, etc. is not covered in the warranty.

# Super High **Battery Life**



# **Touch Control**






**Z40 Ultra**

**B O U L T**

---

## Documents / Resources

	<a href="#">BOULT Z40 Ultra 35dB ANC Touch Control and Dual Device</a> [pdf] User Manual Z40 Ultra 35dB ANC Touch Control and Dual Device, Z40 Ultra, 35dB ANC Touch Control and Dual Device, Touch Control and Dual Device, Dual Device
---	---

## References

- [User Manual](#)

[Manuals+](#), [Privacy Policy](#)

This website is an independent publication and is neither affiliated with nor endorsed by any of the trademark owners. The "Bluetooth®" word mark and logos are registered trademarks owned by Bluetooth SIG, Inc. The "Wi-Fi®" word mark and logos are registered trademarks owned by the Wi-Fi Alliance. Any use of these marks on this website does not imply any affiliation with or endorsement.