



# BOTZEES 51212 Building Blocks Robot Instruction Manual

[Home](#) » [BOTZEES](#) » BOTZEES 51212 Building Blocks Robot Instruction Manual 

## Contents

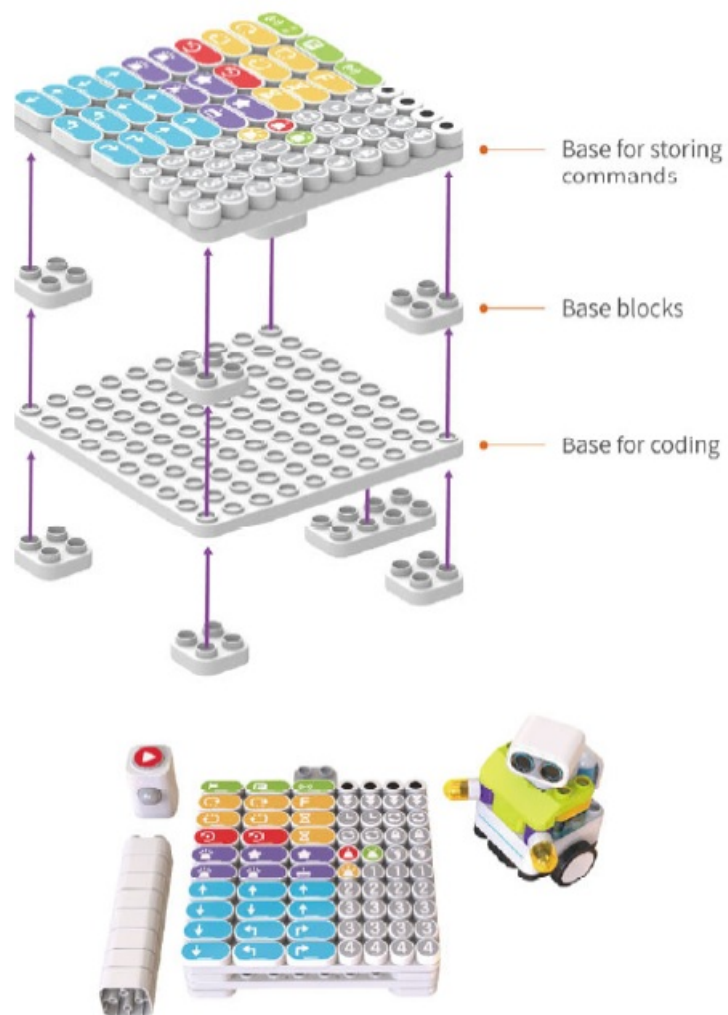
- [1 BOTZEES 51212 Building Blocks Robot](#)
- [2 Storage recommendations](#)
- [3 List of Parts \(Botzees Classic NOT INCLUDED!\)](#)
- [4 Warnings](#)
- [5 Features](#)
- [6 Power on/Read the program/Stop/Power indicator light](#)
- [7 Pair/Program indicator light](#)
- [8 Exception handling](#)
- [9 Commands](#)
- [10 Installation](#)
- [11 Disclaimer](#)
- [12 FCC Compliance Statement](#)
- [13 Documents / Resources](#)
- [14 Related Posts](#)



**BOTZEES 51212 Building Blocks Robot**



**Storage recommendations**



**Lisi of Paris (Bolzees Classic NOT INCLUDED!)**



X 40



X 30



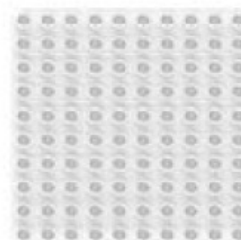
X 1



X 8



X 8



X 2



X 1



X 3

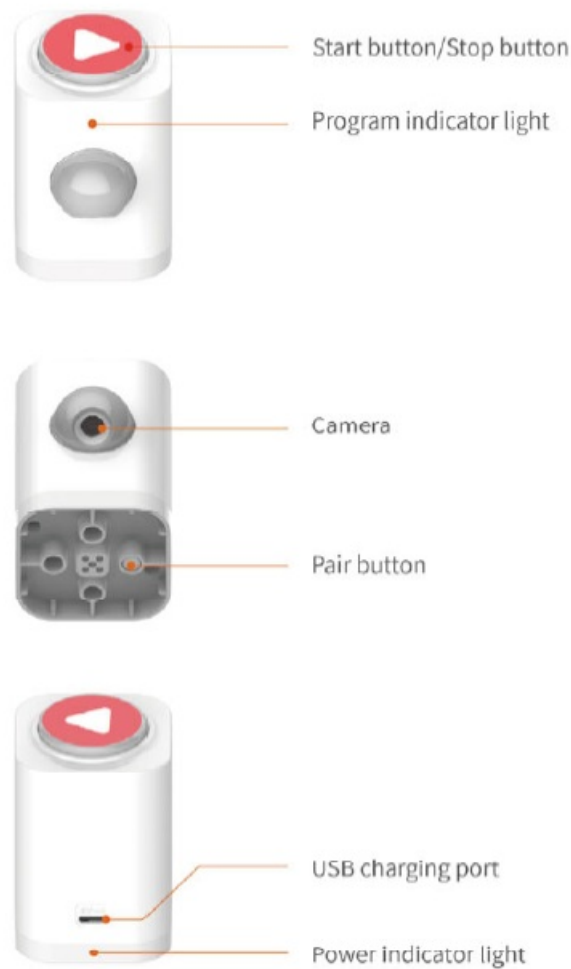


X 1

## Warnings

1. The battery is not replaceable.
2. Please charge this toy by using a suitable transformer (battery charger) for toys. This toy is not supplied with a transformer. To ensure safety, please use a safety isolating transformer with a “”mark, and the output should be DC 5V 1A. The transformer is not a toy, and misuse of the transformer can cause electrical shock.
3. Charging cable and transformer are not toys.
4. Regularly check whether the charging cable and the transformer are damaged. if the damage is found, stop using it until the repair is complete.
5. The toy is not to be connected to more than the recommended number of power supplies.
6. Rechargeable batteries are only to be charged under adult supervision.
7. This toy is not intended for children under 3 years old.
8. Please clean the product with a soft, dry cloth.
9. This product should not come into contact with water.
10. The instruction manual and packaging must be retained since it contains important information.
11. This toy is only to be connected to equipment bearing either of the following

## Features



## Power on/Read the program/Stop/Power indicator light



## Pair/Program indicator light



Program indicator light

Blue indicator light on: Working/Paired



Blue indicator light flashes: Pairing



Red indicator light on: Unpaired



Blue indicator light flash alternately:  
Reading the program



Blue and red indicator light flash alternately: Program error



Blue indicator light flashes: Execute the previous program.

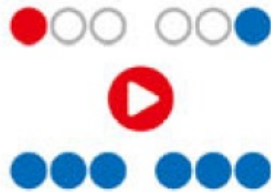


Pair: Press for three times in three seconds to pair with Botzees main control block before first use. If paired, the device will be automatically connected at next time.

## Exception handling



①



Red and blue indicator light flash alternately:  
Incorrect command use. Please press the  
start button once to correct the error until  
the blue light is on.

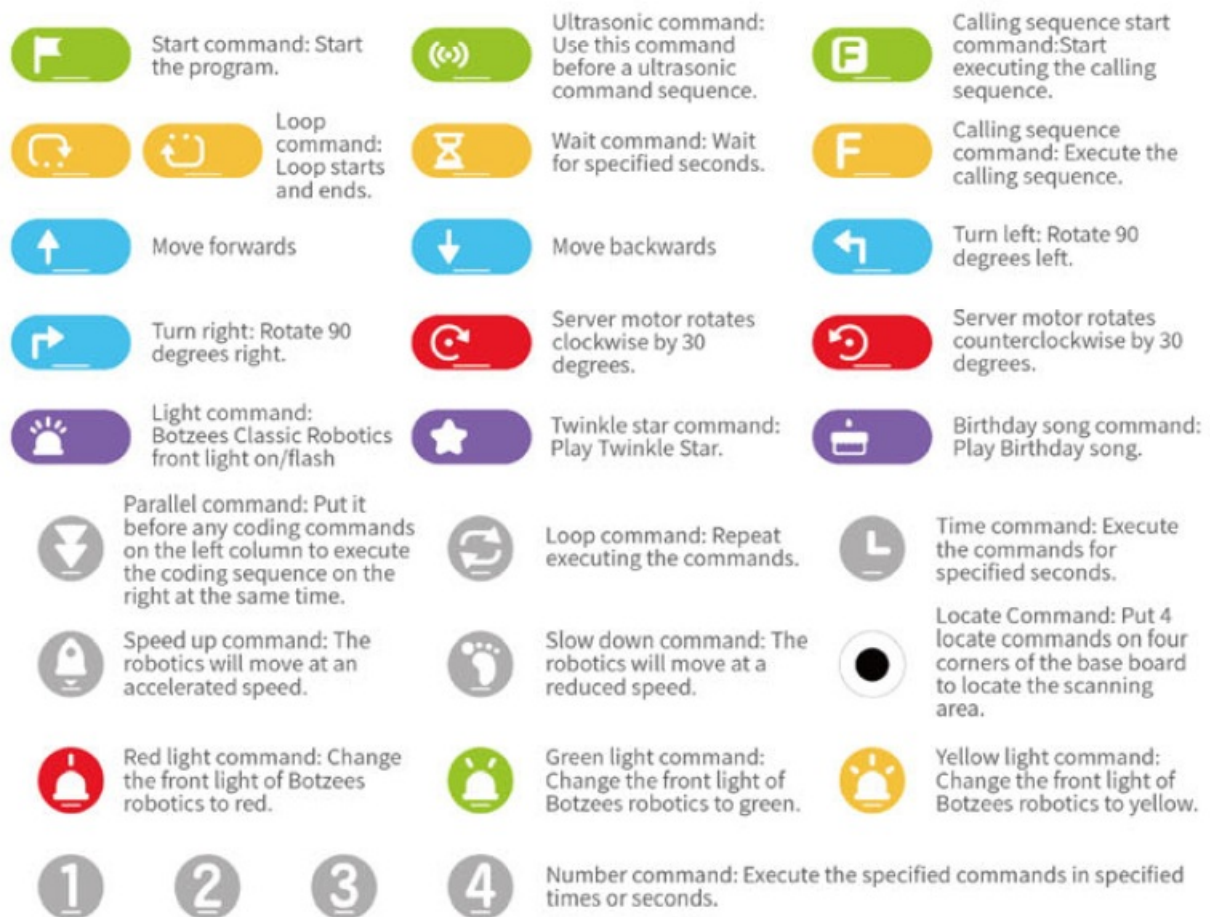


②



Red light on: Unpaired. To pair the device, press the power button on Botzees Classic (not included) for three times in 3 seconds, and press the pair button for three times in 3 seconds until the blue light is on.

## Commands

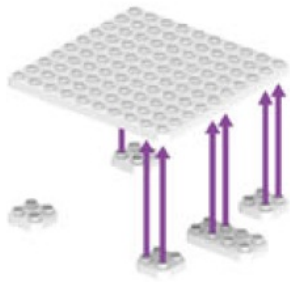


## Installation

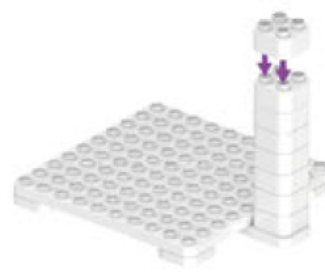
1. Put 5 blocks underneath.
2. Put 8 blocks up as the camera base.
3. Put the camera on the tower base.
4. Install the Locate command and the Startcommand.
5. How to Pair
6. Start coding



1



2、



3.



4、



5、



Long press the power button to power on. Press the power button for 3 times. (This must be done in 3 seconds.)



Long press the start button for 2 seconds to power on. Press the pair button at the bottom for 3 times. (This must be done in 3 seconds.)



6、



## Disclaimer

The material in this manual is for informational purposes only. The products it describes are subject to change without prior notice, due to the manufacturer's continuous development program. Pai Technology Inc. makes no representations or warranties with respect to this manual or with respect to the products described herein. Pai Technology Inc. shall not be liable for any damages, losses, costs or expenses, direct, indirect or incidental, consequential or special, arising out of, or related to the use of this material or the products described herein.



## FCC Compliance Statement

Please take attention that changes or modifications not expressly approved by the party responsible for compliance could void the user s authority to operate the equipment. This device complies with Part 15 of the FCC Rules. Operation is subject to the following two conditions:

1. This device may not cause harmful interference, and
2. This device must accept any interference received, including interference that may cause undesired operation.

## Documents / Resources

	<a href="#">BOTZEES 51212 Building Blocks Robot</a> [pdf] Instruction Manual 512121, 2APRA512121, 51212 Building Blocks Robot, 51212, Building Blocks Robot, Blocks R obot, Robot
---	---

Manuals+.