

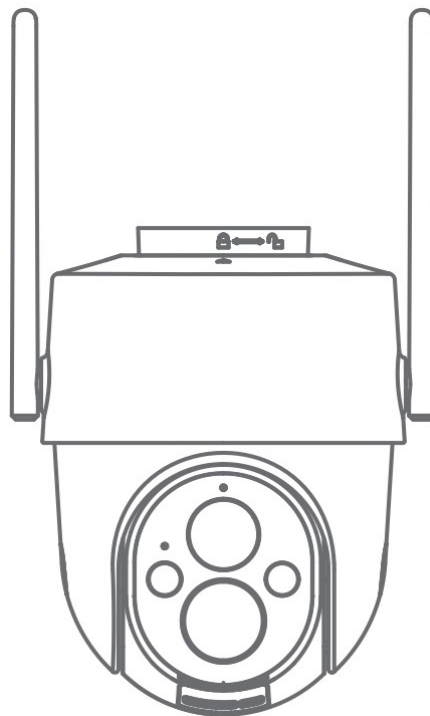


## Botslab W313 PT Battery Wifi Camera User Guide

[Home](#) » [Botslab](#) » Botslab W313 PT Battery Wifi Camera User Guide 

# Botslab

Be Secure, Be Botslab  
Botslab PT Battery Wi-Fi Camera  
Quick Start Guide



## Contents

- 1 W313 PT Battery Wifi Camera
- 2 Product appearance
- 3 Guideline for Connecting to the Network
- 4 Precautions
- 5 Working Status Description
- 6 Important Statement
- 7 Documents / Resources
  - 7.1 References

## W313 PT Battery Wifi Camera

### Packing list

Upon opening the package, please check for any damage to the main unit and ensure all accessories are present.

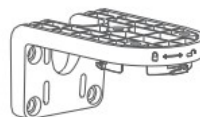
#### Camera Packing List



dome  
camera x 1



type-C charging  
cable x 1



dome camera  
bracket x 1



Quick Start  
Guide x 1



warning  
sticker x 1



screw  
pack x 1

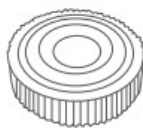


Positioning  
sticker x 1

#### Solar Panel Packing List



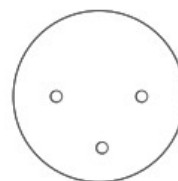
solar  
panel x 1



clamp  
nut x 1



base  
nut x 1



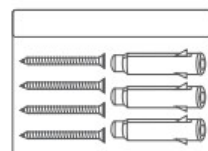
Positioning  
sticker x 1



baser  
x 1



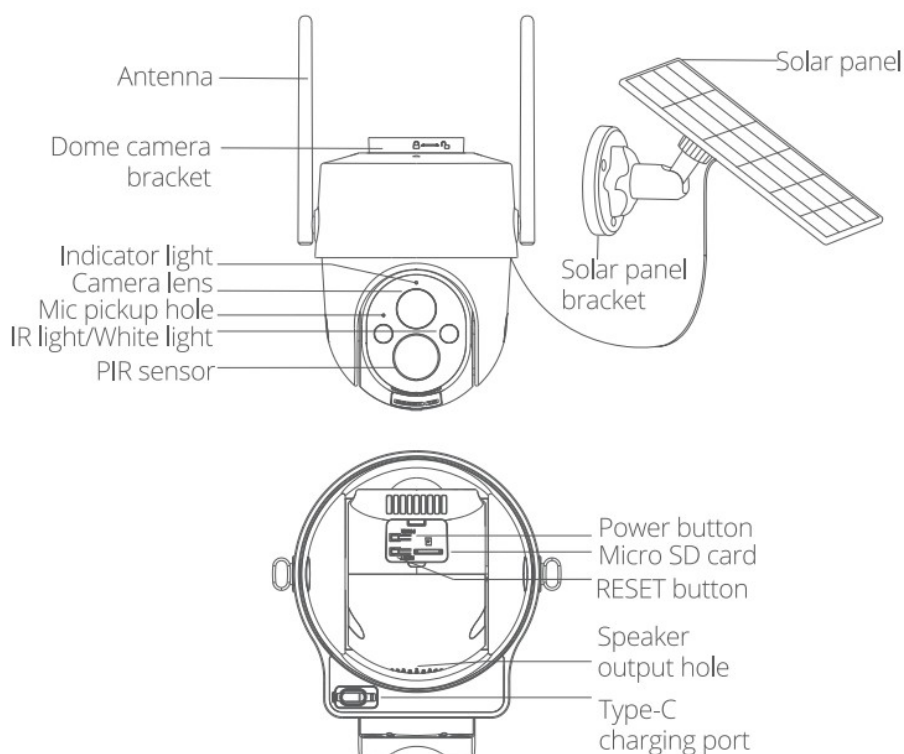
bracket  
arm x 1



screw  
pack x 1

The product and accessory illustrations in the Quick Start Guide are schematic diagrams for reference only.

## Product appearance



Memory card: Maximum 256 GB

## Guideline for Connecting to the Network

Download and Installation of the App

Method 1: Scan the QR code below with your mobile phone to download and install the Botslab APP.

Method 2: Search and download the Botslab APP from App Store or Google Play, and then install it.



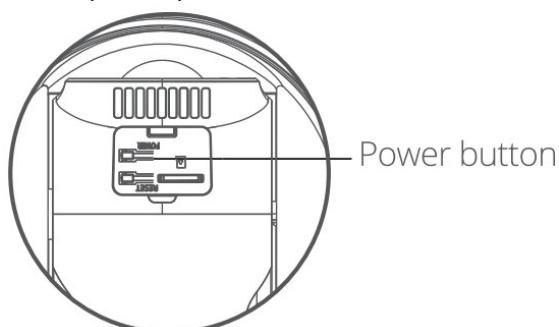
Scan to download  
Botslab APP



<https://www.botslab.com/superappdownload.html>

## Connection Guide

Before using the app to add the camera, please press and hold the POWER button for 3 seconds to turn it on.



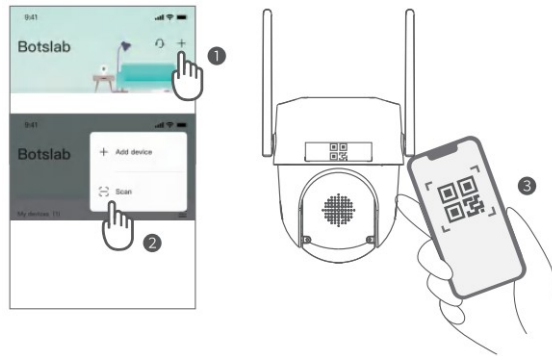
If the indicator light slowly flashes red, this indicates that the dome camera is ready and can be set up.

## Add the Device

Open the Botslab app, click the Register button to register a Botslab account. If you already have an account, click the “Login” button, and enter your account and password to log in.

### Method 1:

After logging in, click the “+” button in the upper right corner of the homepage, select “Scan”, and then use your phone to scan the QR code on the camera to access the network configuration page. Follow the prompts to add the camera.



### Method 2:

After logging in, click the “+” button on the upper right corner of the app’s homepage to add a camera by the model.



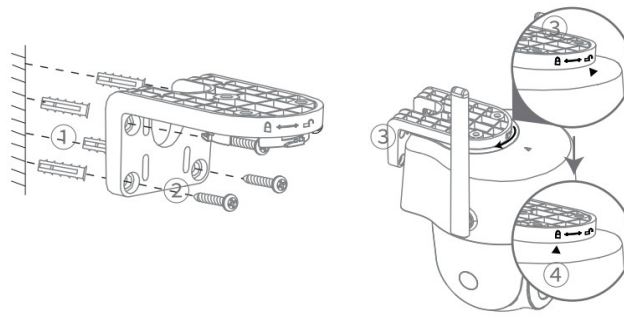
- Please make sure the environment is quiet when using the sound waves for pairing.
- Make sure that the camera is connected to WiFi in the 2.4Hz frequency band.

## Installation Guide

Camera Installation:

### Wal-mounted:

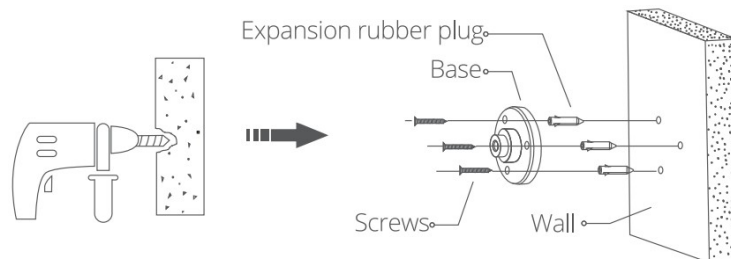
1. Attach the positioning sticker to the wall and drill a hole according to the position shown in the diagram.
2. Insert the expansion bolt into the wall at the positioning sticker's hole position.
3. Fix the bracket base with screws.
4. Align the camera with the slot, push it upwards into the fastened bracket, and rotate the camera until it aligns with the positioning mark on the wall bracket.



Pay attention to outdoor lightning protection measures.

### Installation of Solar Panels:

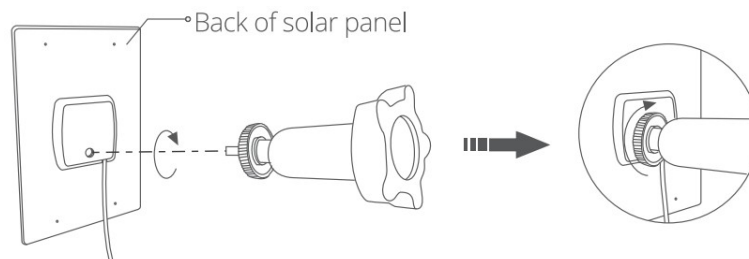
1. Use the included screws to fasten the base to the installation position. If the installation surface is soft or unstable, first drill a hole on the wall with a 6.0 drill bit, then insert the expansion rubber plug into the hole, and secure the base with screws.



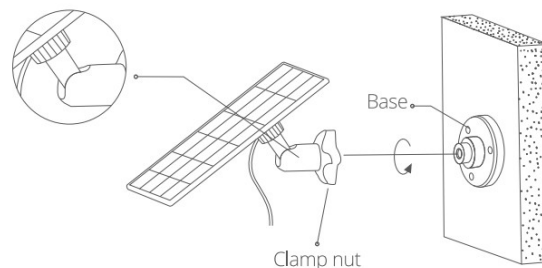
2. First, insert base nuts into the bracket arm, and then fasten the circular clamp nut into the bracket arm.



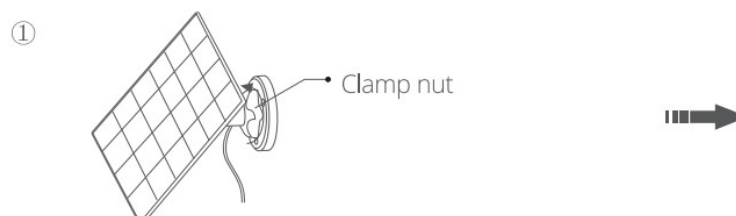
3. Securely attach the bracket arm to the back of the solar panel using the provided screws.

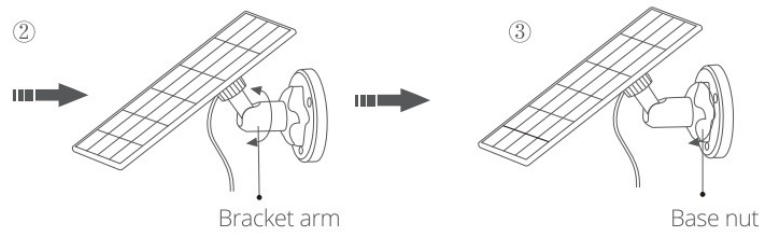


4. Screw the clamp nut into the base, and make sure that the bracket arm is tilted upwards.

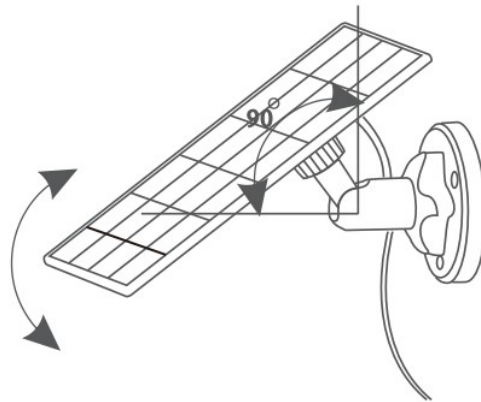


5. When adjusting the solar panel's position horizontally, please loosen the clamp nut, rotate the bracket arm, and tighten the clamp nut after putting the solar panel in the desired position.



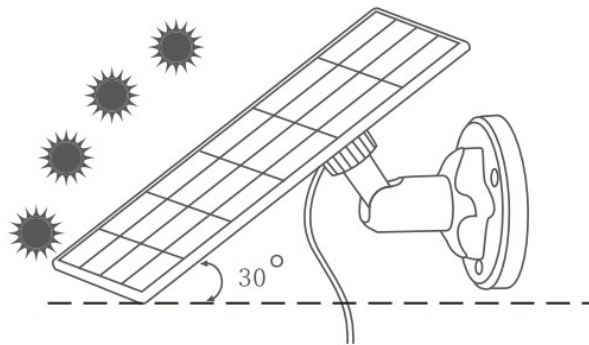


6. The tilt angle of solar panel can be adjusted vertically, with a maximum angle of  $90^\circ$ .



After installation, please check all locking components to ensure they are securely fastened.

Please use a soft damp cloth to wipe the surface of the solar panel on a regular basis, in order to remove dust or debris.

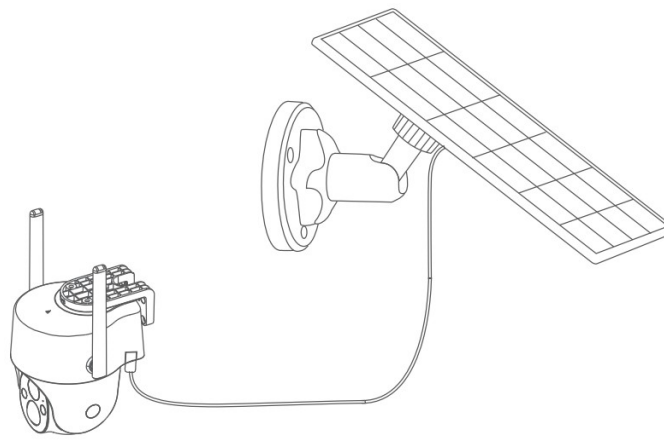


#### How to adjust the orientation of solar panels:

1. Find the location with the most direct sunlight during the day.
2. Tilt the solar panel upwards by  $30^\circ$ .
3. If you are in the northern hemisphere, point it southwards; if you are in the southern hemisphere, point it northwards.

#### Camera and Solar Panel Installation and Connection:

Insert the solar panel connection cable into the camera's type-C power port.



## Precautions

1. To achieve better night vision imaging results, keep the lens front or side away from reflective objects such as glass and white walls. This will prevent nearby objects from appearing too bright while distant objects may appear dark or white.
2. Place the device in a location with good network signal reception and keep it away from metal objects (such as metal brackets, metal doors, and windows) or other sources of signal interference.
3. It is normal that the equipment generates heat during operation.
4. This product is designed to operate within a temperature range of -20°C to +50°C. Do not use this product in environments that are too hot or too cold.

## Working Status Description

### Indicator light status

Light off	Turned off/ PIR not awakened/ No operation for a long time
Solid blue	Camera online
Quickly flashing blue	Camera video is being viewed
Solid red	Device startup/failure
Quickly flashing red	Device upgrade in progress/ Flashing 3-5 times before turning off indicates low battery
Slowly flashing red	Waiting for network configuration

The manufacturer reserves the right to adjust the product's functional status through firmware upgrades or software adjustments.

## Important Statement

### Personal Information Security

To ensure the safety of you and your family, please make sure that your product is only bound by authorized persons. Botslab will take strict measures to ensure the security of your and your family's information.

### Description of Hazardous material Contents.

Component	Toxic and Harmful Substances and Elementst					
	Lead (Pb)	Mercur (Hg)	Cadmium (Cd)	Hexavalent Chromium (Cr (VI))	Polybrominsted Biphenyl (PBB)	Polybrominsted DiphenylEthers (PBDE)
Plastic enclosure	0	0	0	0	0	0
Circuit board components	X	0	0	0	0	0
Power cable	X	0	0	0	0	0
Adapter	X	0	0	0	0	0
Lens	0	0	0	0	0	0

This form is prepared in accordance with SJ/T11364.

Indicates that for each item in this produce ,said hazardous substance id below the requirements set forth by the standard GB/T26572.



hazardous substance in at least one homogeneous material of this part – exceeds the limit specified in GB/T26572. However, it satisfies limit \_ requirements specified in the List of Exempt Applications of Hazardous Substances Identified in the Management Catalog.

Remarks: The lead content in a small number of special-purpose SMT electronic components (such as high-voltage resistors, ceramic resistors, diodes, etc.) in the part labeled “x” in the above table may be 2 0.1%. The lead content in screws or cores of data cables can be 20.1% due to the adoption of high-performance alloy. These components are in compliance with exemption clauses of the EU RoHS Directive. At this stage, due to the limitations of the global technological development level, there is no alternative technologies and parts, and the lead content of the external contactable parts of the product meets the environmental protection requirements.

#### **FCC regulatory conformance:**

This device complies with Part 15 of the FCC Rules. Operation is subject to the following two conditions:

1. This device may not cause harmful interference.
2. This device must accept any interference received, including interference that may cause undesired operation.

**NOTE:** This equipment has been tested and found to comply with the limits for a Clas B digital device, pursuant to part 15 of the FCC Rules. These limits are designed to provide reasonable protection against harmful interference in a residential installation.

This equipment generates uses and can radiate radio frequency energy and, if not installed and used in accordance with the instructions, may cause harmful interference to radio communications. However, there is no guarantee that interference will not occur in a particular installation. If this equipment does cause harmful interference to radio or television reception, which can be determined by turning the equipment off and on, the user is encouraged to try to correct the interference by one or more of the following measures:

- Reorient or relocate the receiving antenna.
- Increase the separation between the equipment and receiver.
- Connect the equipment into an outlet on a circuit different from that to which the receiver is connected.
- Consult the dealer or an experienced radio/TV technician for help

#### **NOTE:**

The manufacturer is not responsible for any radio or TV interference caused by unauthorized modifications to this equipment. Such modifications could void the user’s authority to operate the equipment.

#### **RF Exposure**



This equipment complies with IC radiation exposure limits set forth for an uncontrolled environment. This equipment should be installed and operated with minimum distance of 20 cm between the radiator and your body. This transmitter must not be co-located or operating in conjunction with any other antenna or transmitter.

#### **IC regulatory conformance**

This device complies with CAN ICES-003 (BYNMB-003(B).

This device complies with Industry Canada licence-exempt RSS standard(s).

#### **Operation is subject to the following two conditions:**

1. this device may not cause harmful interference, and
2. this device must accept any interference received, including interference that may cause undesired operation.

#### **RF Exposure**

This equipment complies with IC radiation exposure limits set forth for an uncontrolled environment. This equipment should be installed and operated with minimum distance of 20 cm between the radiator and your body. This transmitter must not be co-located or operating in conjunction with any other antenna or transmitter.

#### **After-Sales Service**

Warranty policy for Botslab Video Doorbell

This product comes with a one-year Local Warranty Service. For detail of warranty service, please kindly contact local Authorized Distributors in your country.

Non-warranty policy for Botslab Video Doorbell


- No valid warranty certificate and purchase invoice.
- Damage caused by use, maintenance, or keeping of the product not in accordance with product description, damage caused by disassembly and repair unauthorized by Botslab, or artificial damage.
- Damages that result from force majeure.
- Normal decoloration and wastage during usage will not be included in warranty service.

#### **Contact Us**

 <https://www.botslab.com>

 [service@botslab.com](mailto:service@botslab.com)

 Facebook@botslabofficial

 1-866-360-0505 (Only for US)

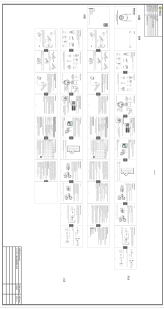
Working time: Mon-Fri, 9:00 – 17:00 EST



Scan to download

**Botslab APP**

<https://www.botslab.com/superappdownload.html>



### [Botslab W313 PT Battery Wifi Camera](#) [pdf] User Guide

W313 PT Battery Wifi Camera, W313, PT Battery Wifi Camera, Battery Wifi Camera, Wifi Camera, Camera

## References

- [User Manual](#)

### [Manuals+](#), [Privacy Policy](#)

This website is an independent publication and is neither affiliated with nor endorsed by any of the trademark owners. The "Bluetooth®" word mark and logos are registered trademarks owned by Bluetooth SIG, Inc. The "Wi-Fi®" word mark and logos are registered trademarks owned by the Wi-Fi Alliance. Any use of these marks on this website does not imply any affiliation with or endorsement.