



BOSS OS-2 Overdrive and Distortion Effects Unit Owner's Manual

[Home](#) » [Boss](#) » BOSS OS-2 Overdrive and Distortion Effects Unit Owner's Manual 



OS-2 Overdrive and Distortion Owner's Manual

Before using this unit, carefully read the sections entitled: "USING THE UNIT SAFELY" and "IMPORTANT NOTES" (supplied on a separate sheet).

After reading, keep the document(s) where it will be available for immediate reference.

Contents

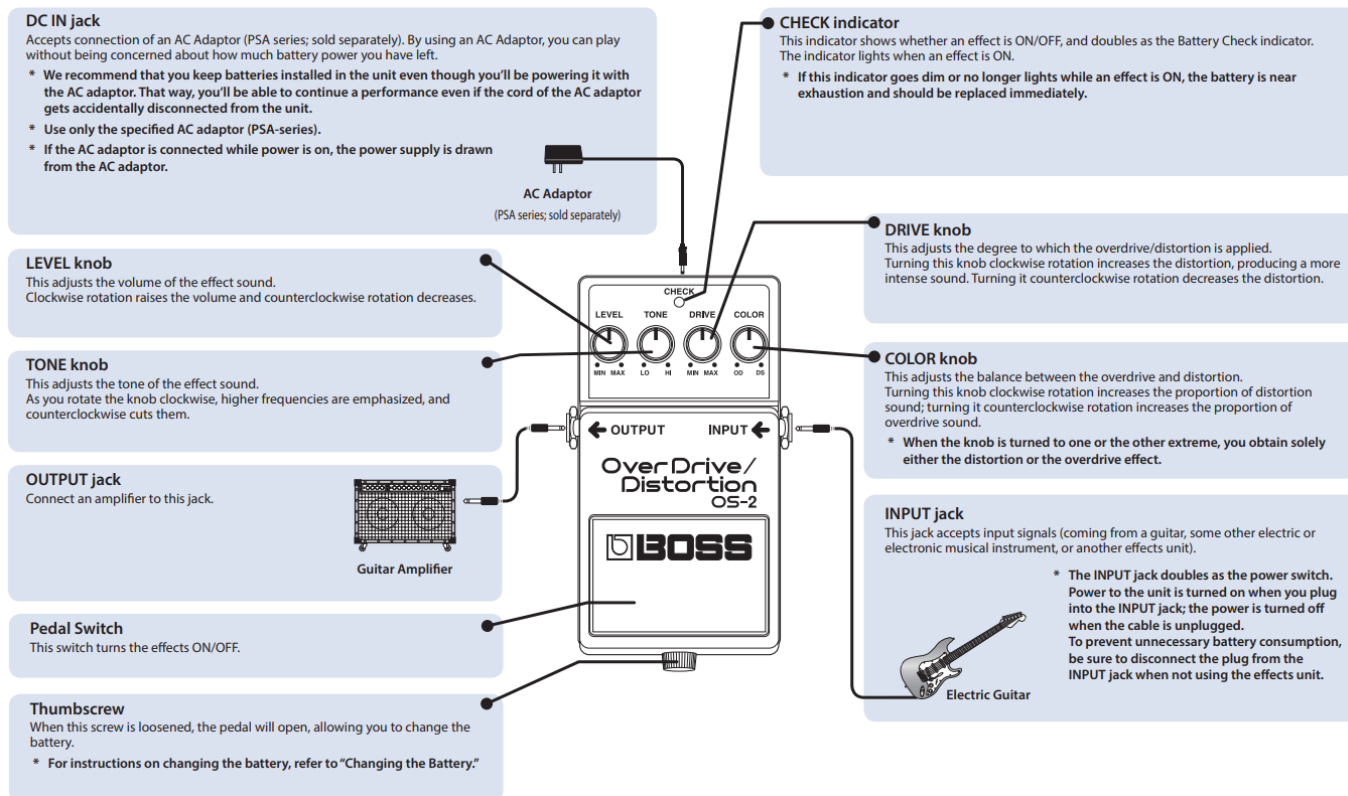
- [1 Main Features](#)
- [2 Panel Descriptions](#)
- [3 IPrecautions When Connecting](#)
- [4 Operating the Unit](#)
- [5 Use of Battery](#)
- [6 Changing the Battery](#)
- [7 Main Specifications](#)
- [8 Documents / Resources](#)
- [9 Related Posts](#)

Main Features

- Overdrive and distortion have been combined into one compact effects unit.
- You are provided with a wealth of new sound creation possibilities as a result of the mixture of overdriven and distorted sounds.
- The unit equipped with a COLOR knob which allows you to adjust at will the respective portions included in the sound mixture.

- A overdrive that really sounds like it comes from a large-scale tube amp is created as a result of the unique BOSS “Asymmetrical Overdrive Circuitry” that is incorporated in the unit.

Panel Descriptions



IPrecautions When Connecting

- To prevent malfunction and equipment failure, always turn down the volume, and turn off all the units before making any connections.
- Once the connections have been completed, turn on power to your various devices in the order specified. By turning on devices in the wrong order, you risk causing malfunction and/or damage to speakers and other devices.

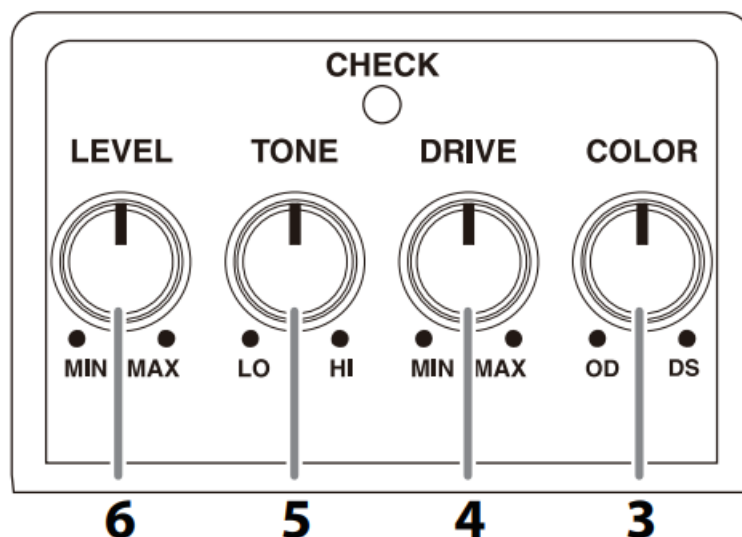
When powering up: Turn on the power to your guitar amp last.

When powering down: Turn off the power to your guitar amp first.

- Before turning the unit on/off, always be sure to turn the volume down. Even with the volume turned down, you might hear some sound when switching the unit on/off. However, this is normal and does not indicate a malfunction.

Operating the Unit

1. When you have made the necessary connections, set the knobs as shown in the illustration.



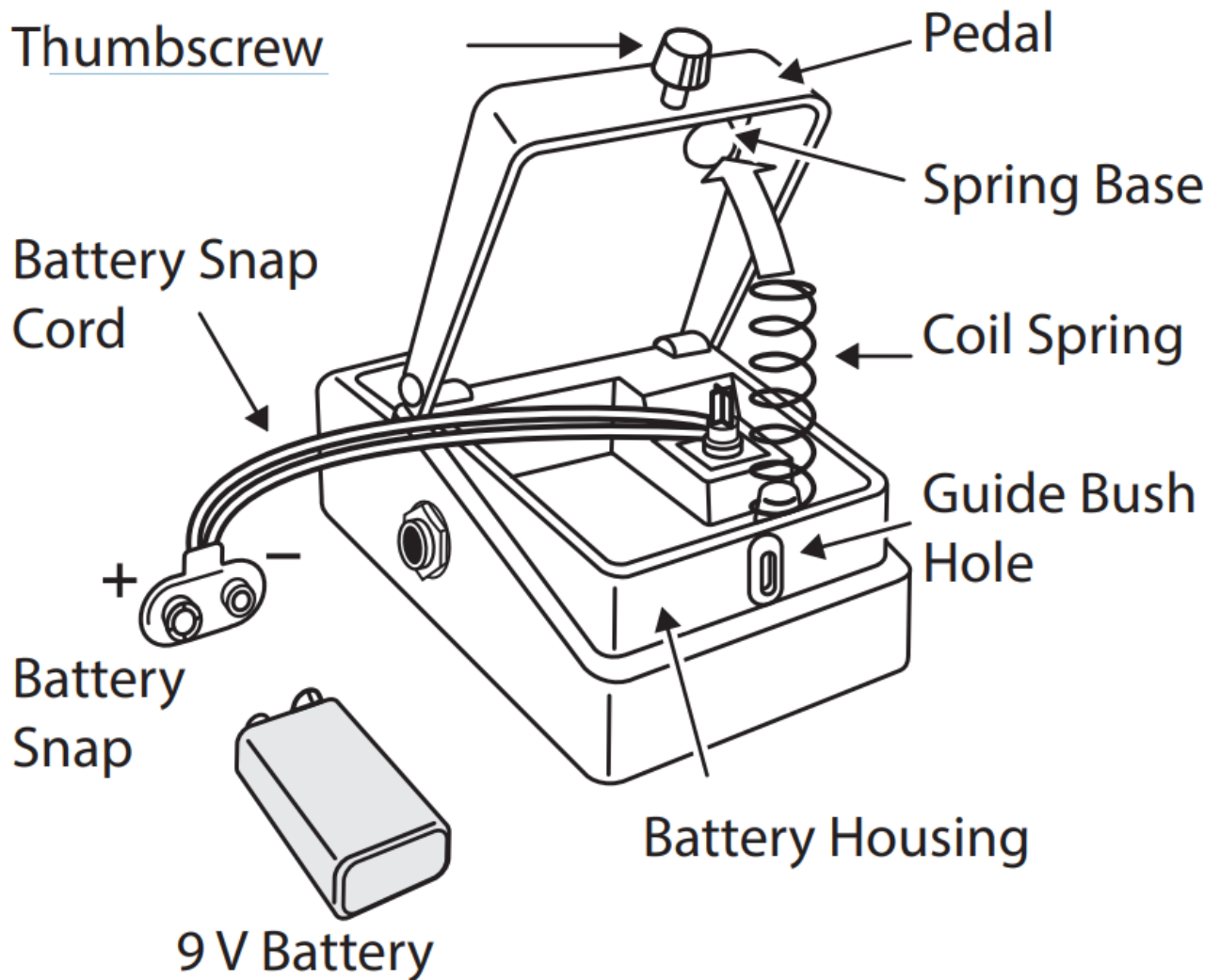
2. Press the Pedal Switch and make sure that the CHECK indicator lights up.
3. Using the COLOR knob adjust the balance between the distortion and the overdrive.
When turned clockwise, the distorted sound proportion is increased.
When turned counterclockwise, the overdriven sound proportion is increased. When the knob is turned to the other extreme, you obtain solely either the distortion or the overdrive effect.
4. Using the DRIVE knob adjust the degree to which the effect is to be applied. The further it is moved clockwise, the greater the distortion becomes.
5. Using the TONE knob, adjust the tone of the sound heard when the effect is on. The further it is moved clockwise, the more the upper range is enhanced, and the sharper the sound becomes.
6. Using the LEVEL knob, adjust the volume of what is heard when the effect is on. It should be adjust so there is no difference in volume between when the effect is on and when it is off.

Use of Battery

- A battery was installed in the unit before it left the factory. The life of this battery may be limited, however, since its primary purpose was to enable testing.
- If you handle batteries improperly, you risk explosion and fluid leakage. Make sure that you carefully observe all of the items related to batteries that are listed in “USING THE UNIT SAFELY” and “IMPORTANT NOTES” (supplied on a separate sheet).
- When operating on battery power only, the unit’s indicator will become dim when battery power gets too low. Replace the battery as soon as possible.
- Batteries should always be installed or replaced before connecting any other devices. This way, you can prevent malfunction and damage.

Changing the Battery

1. Hold down the pedal and loosen the thumbscrew, then open the pedal upward.
* The pedal can be opened without detaching the thumbscrew completely.



2. Remove the old battery from the battery housing, and remove the snap cord connected to it.
3. Connect the snap cord to the new battery, and place the battery inside the battery housing. * Be sure to carefully observe the battery's polarity (+ versus -).
4. Slip the coil spring onto the spring base on the back of the pedal, and then close the pedal. * Carefully avoid getting the snap cord caught in the pedal, coil spring, and battery housing.
5. Finally, insert the thumbscrew into the guide bush hole and fasten it securely.

Main Specifications

Nominal Input Level	-20 dBu
Input Impedance	1 MR
Nominal Output Level	-20 dBu
Output Impedance	1 Idi
Recommended Load Impedance	10 kf) or greater
Power Supply	Carbon-zinc battery (9 V, 6F22) or Alkaline battery (9 V, 6LR61) AC adaptor (PSA series: sold separately)
Current Draw	12 mA * Expected battery life under continuous use: Carbon: 33.5 hours Alkaline: 55 hours These figures will vary depending on the actual conditions of use.
Dimensions	73 (W) x 129 (D) x 59 (H) mm 2-7/8 (W) x 5-1/8 (D) x 2-3/8 (H) inches
Weight	385 g / 14 oz (including battery)
Accessories	Leaflet ("USING THE UNIT SAFELY:IMPORTANT NOTES"and Information") Carbon-zinc battery (9 V, 6F22)
Options (sold separately)	AC adaptor (PSA-series)

* 0 dBu = 0.775 Vrms

* This document explains the specifications of the product at the time that the document was issued. For the latest information, refer to the Roland website.



Documents / Resources

A small thumbnail image of the BOSS OS-2 Owner's Manual, showing the title page and some technical diagrams.	<p>BOSS OS-2 Overdrive and Distortion Effects Unit [pdf] Owner's Manual</p> <p>OS-2 Overdrive and Distortion Effects Unit, OS-2, Overdrive and Distortion Effects Unit, Distortion Effects Unit, Effects Unit</p>
--	---