



BOSE Sub1 Adjustable Speaker Pole Instruction Manual

[Home](#) » [Bose](#) » BOSE Sub1 Adjustable Speaker Pole Instruction Manual 

Contents

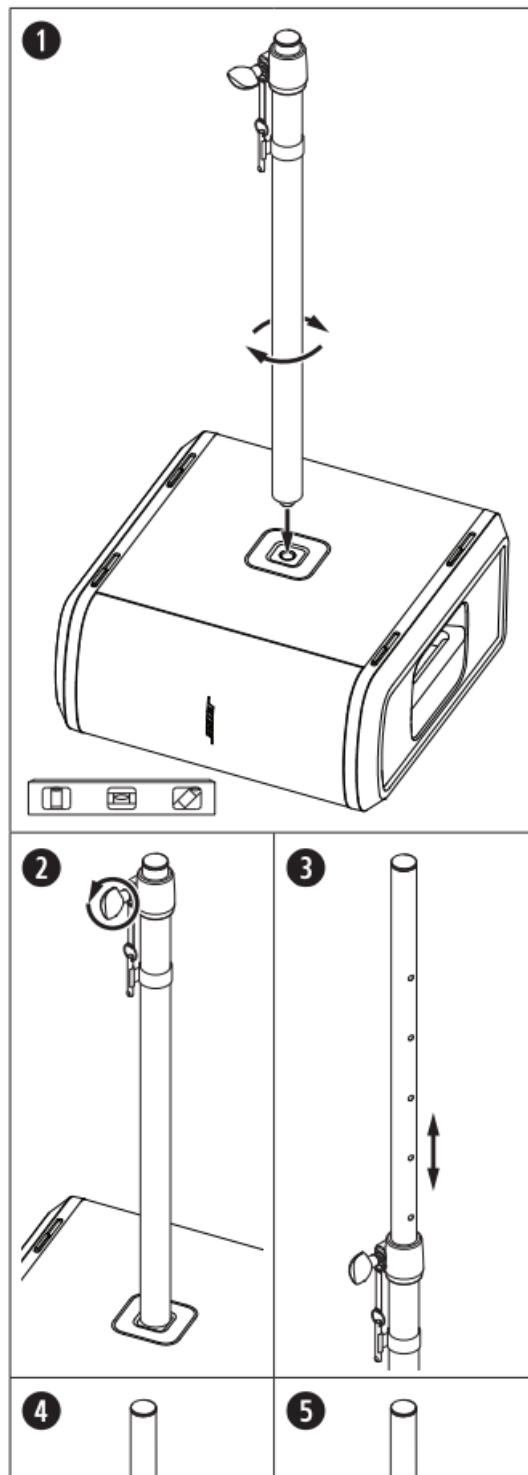
- [1 BOSE Sub1 Adjustable Speaker Pole](#)
- [2 INSTALLATION](#)
- [3 Important Safety Instructions](#)
- [4 Regulatory Information](#)
- [5 Documents / Resources](#)
- [6 Related Posts](#)



BOSE Sub1 Adjustable Speaker Pole



INSTALLATION



Important Safety Instructions

- Do NOT make unauthorized alterations to this product.
- Only use attachments/accessories specified by the manufacturer.
- Do not place the product near any heat sources, such as fireplaces, radiators, heat registers or other apparatus (including amplifiers) that produce heat.
- This product is intended for indoor use only. Do not use this product outdoors or around water, mist, or condensation.
- Unsafe mounting of any heavy load can result in serious injury or death, and property damage
- The pole-mount M20 threaded insert on the Sub and Sub2 is designed to support the Sub/ Sub2 Adjustable Speaker Pole with a Bose SI Pro mounted on the pole. Do not use the Sub1/ Sub2 Adjustable Speaker Pole

with a loudspeaker whose weight exceeds 7.1 kilograms (15,7 pounds). Doing so creates an unstable mounting scenario that may lead to a hazardous condition that could result in injury.

- Make sure the stage or ground is stable and level before placing a speaker on the pole.
- Once the subwoofer, pole, and loudspeaker are attached, make sure the whole assembly is secure and does not present a tipping hazard or safety risk.
- Do NOT attempt to move the whole assembly (subwoofer, pole, and loudspeaker). Remove the loudspeaker from the pole before moving the subwoofer.

WARNING: Do not expose loudspeaker or mounting components to any chemical substances that are not specified by Bose, including but not limited to lubricants, cleaning agents, contact sprays, or hydrocarbon-based solvents. exposure to such substances can lead to degradation of the plastic material, resulting in cracking and Creating a falling hazard. Contains small parts which may be a choking hazard. Not suitable for children under age 3.

Regulatory Information

Dimensions:

- **Width:** 9.0 cm 3.5 in)
- **Depth:**6.7 cm (26 in)
- **Height:** 76,5-142.0 cm (301-55.9 in)

Net Weight: 154 kg (3,40 lb)

China Importer: Bose Electronics (Shanghai) Company Limited, Part C, Plant 9, No. 353 North Rising Road, China (Shanghai) Pilot Free Trade Zone

EU Importer: Bose Products BV., Gorslaan 60,1441 RG Purmerend, The Netherlands

For service or importer information, call +5255 (5202) 3545.

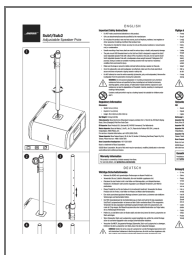
Taiwan Importer: Bose Taiwan Branch, 9F-A1, No. 10, Section 3, Minsheng East Road, Taipei City 104,

Taiwan. Phone Number: +886-2-2514 7676

Bose Corporation Headquarters: 1-877-230-5639

Bose is a trademark of Bose Corporation. ©2020 Bose Corporation. No part of this work may be reproduced, modified, distributed or otherwise Used without prior written permission.

Documents / Resources



[BOSE Sub1 Adjustable Speaker Pole](#) [pdf] Instruction Manual

Sub1, Sub2, Adjustable Speaker Pole, Speaker Pole, Adjustable Speaker, Sub1, Pole