



BOSE ST-2 Power Stack Owner's Manual

[Home](#) » [Bose](#) » BOSE ST-2 Power Stack Owner's Manual 



Before using this unit, carefully read the sections entitled: “USING THE UNIT SAFELY” and “IMPORTANT NOTES” (supplied on a separate sheet).

After reading, keep the document(s) where it will be available for immediate reference.

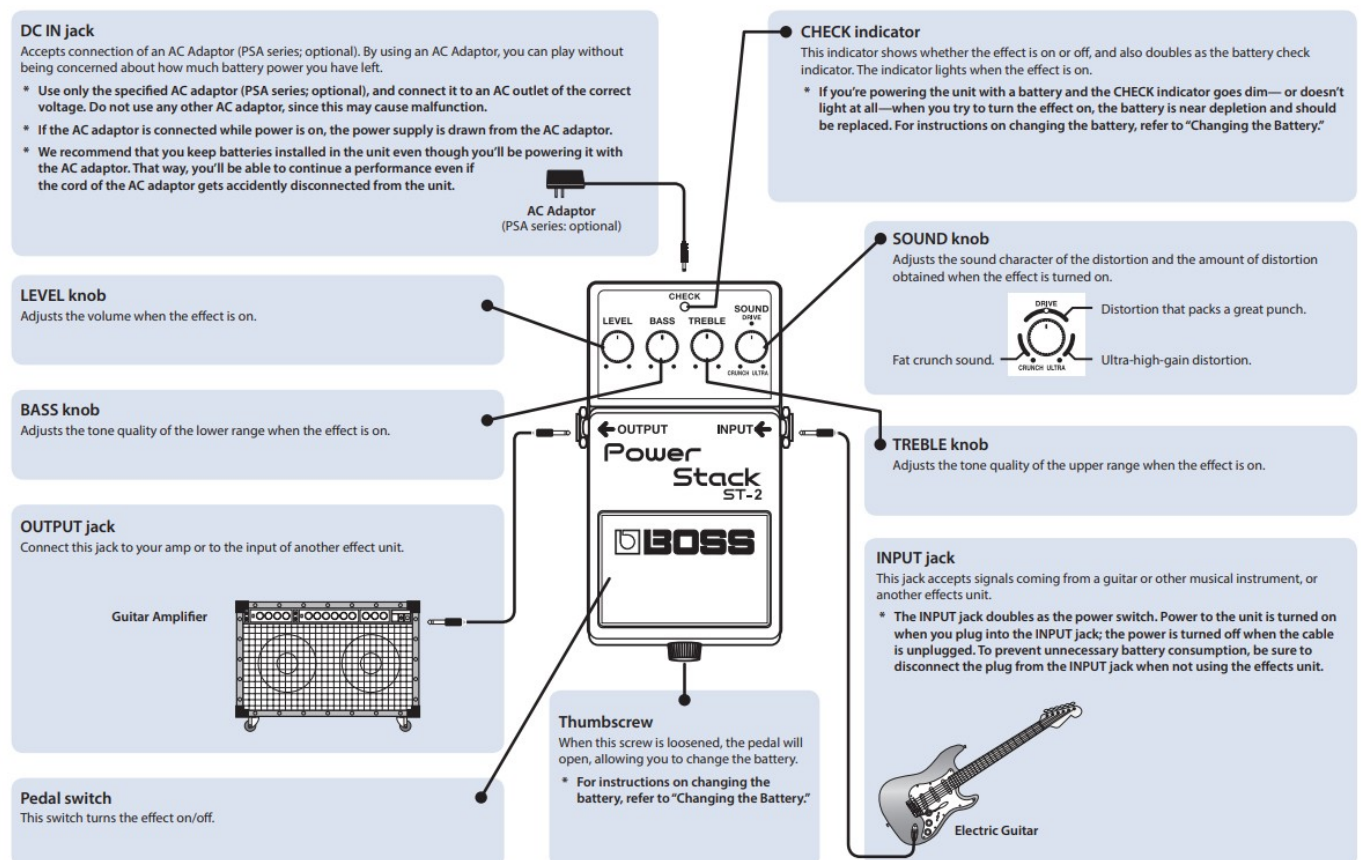
Contents

- 1 Main Features
- 2 Panel Descriptions
- 3 Precautions When Connecting
- 4 Use of Battery
- 5 Changing the Battery
- 6 Specifications
- 7 Documents / Resources

Main Features

- This is a distortion effect that produces the powerful sound of a large amp stack.
- It can generate a wide variety of distortion, ranging from classic rock sounds to modern high-gain sounds.
- You can obtain richly expressive guitar sounds by varying your guitar’s volume and your picking dynamics.

Panel Descriptions



Precautions When Connecting

- To prevent malfunction and equipment failure, always turn down the volume, and turn off all the units before making any connections.
- Do not use connection cables that contain a built-in resistor.

- Raise the amp volume only after turning on the power to all connected devices.
- Once the connections have been completed, turn on power to your various devices in the order specified. By turning on devices in the wrong order, you risk causing malfunction and/or damage to speakers and other devices.

When powering up: Turn on the power to your guitar amp last.

When powering down: Turn off the power to your guitar amp first.

- This unit is equipped with a protection circuit. A brief interval (a few seconds) after power up is required before the unit will operate normally.

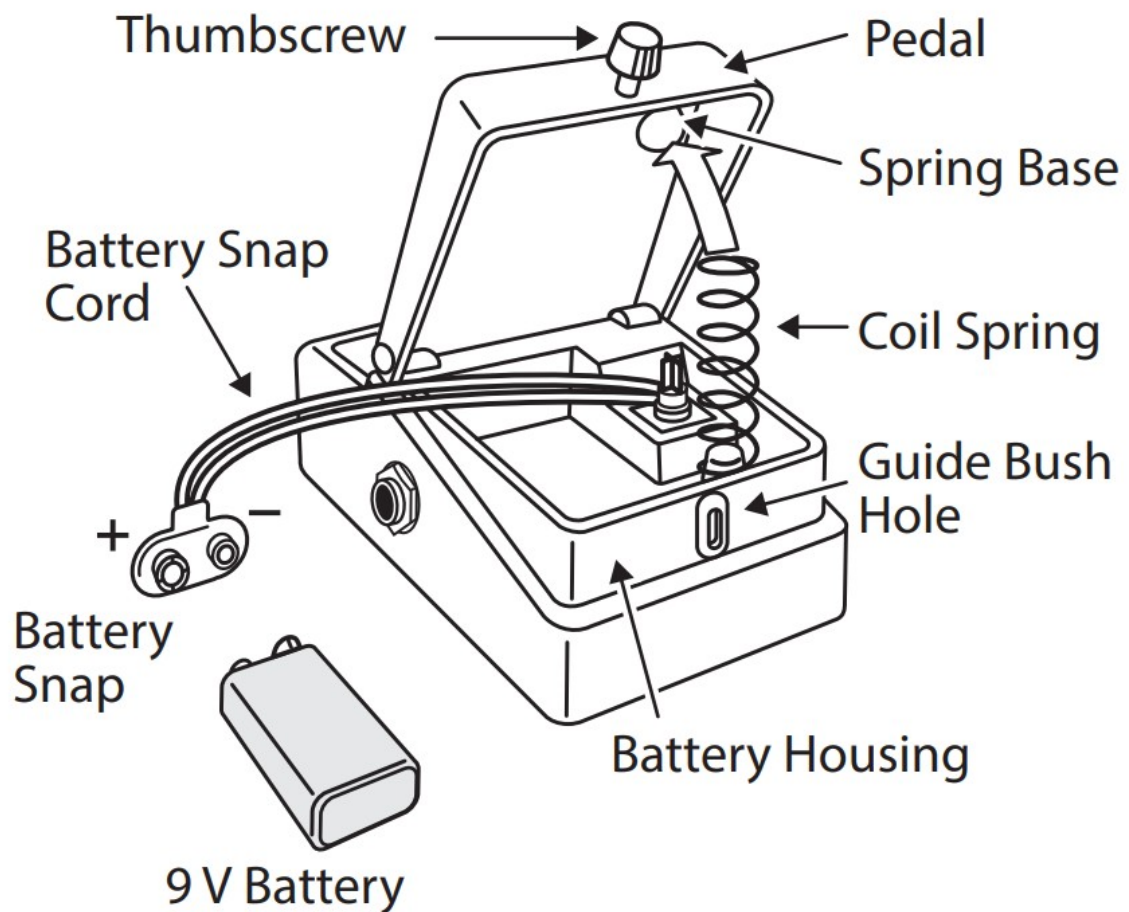
Use of Battery

- A battery was installed in the unit before it left the factory. The life of this battery may be limited, however, since its primary purpose was to enable testing.
- If you handle batteries improperly, you risk explosion and fluid leakage. Make sure that you carefully observe all of the items related to batteries that are listed in “USING THE UNIT SAFELY” and “IMPORTANT NOTES” (supplied on a separate sheet).
- When operating on battery power only, the unit’s indicator will become dim when battery power gets too low. Replace the battery as soon as possible.
- Batteries should always be installed or replaced before connecting any other devices. This way, you can prevent malfunction and damage.
- The use of an AC adaptor is recommended as the unit’s power consumption is relatively high. Should you prefer to use batteries, please use the alkaline type.

Changing the Battery

1. Hold down the pedal and loosen the thumbscrew, then open the pedal upward.

* The pedal can be opened without detaching the thumbscrew completely.



2. Remove the old battery from the battery housing, and remove the snap cord connected to it.
3. Connect the snap cord to the new battery, and place the battery inside the battery housing.
 - * Be sure to carefully observe the battery's polarity (+ versus -).
4. Slip the coil spring onto the spring base on the back of the pedal, and then close the pedal.
 - * Carefully avoid getting the snap cord caught in the pedal, coil spring, and battery housing.
5. Finally, insert the thumbscrew into the guide bush hole and fasten it securely.

Specifications

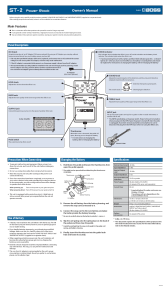
Nominal Input Level	-20 dBu
Input Impedance	1 MO
Nominal Output Level	-20 dBu
Output Impedance	1 kO
Recommended Load Impedance	10 kO or greater
Power Supply	Alkaline battery (9 V, 6LR61) AC adaptor (PSA series: sold separately)
Current Draw	65 mA * Expected battery life under continuous use: Alkaline: 5.5 hours These figures will vary depending on the actual conditions of use.
Dimensions	73 (W) x 129 (D) x 59 (H) mm 2-7/8 (W) x 5-1/8 (D) x 2-3/8 (H) inches
Weight	410 g / 15 oz (including battery)
Accessories	Leaflet ("USING THE UNIT SAFELY," "IMPORTANT NOTES; and "Information") Alkaline battery (9 V, 6LR61)
Options (sold separately)	AC adaptor (PSA-series)

* 0 dBu = 0.775 Vrms

* This document explains the specifications of the product at the time that the document was issued. For the latest information, refer to the Roland website.



Documents / Resources

	<p>BOSE ST-2 Power Stack [pdf] Owner's Manual ST-2 Power Stack, ST-2, Power Stack, Stack</p>
---	--