



## BOSE FreeSpace 3 Series II Acoustimass Bass Module Installation Guide

[Home](#) » [Bose](#) » BOSE FreeSpace 3 Series II Acoustimass Bass Module Installation Guide 

# ***BOSE***

PROFESSIONAL

FreeSpace 3

Series II Acoustimass Bass Module

Flush-mount Satellites

Surface-mount Satellites

Installation Guide



## Contents

- 1 Important Safety Instructions
- 2 Regulatory Information
- 3 Package Contents
- 4 Product Dimensions
- 5 Overview
- 6 Technical Specifications
- 7 Safety & Regulatory Compliance
- 8 Installation Options
- 9 Wiring the Loudspeaker
- 10 Preparing the Installation
- 11 Mounting the Loudspeaker
- 12 Installation
- 13 Documents / Resources
  - 13.1 References
- 14 Related Posts

## Important Safety Instructions

Please read and keep all safety and use instructions.

This product is intended for installation by professional installers only! This document is intended to provide professional installers with basic installation and safety guidelines for this product in typical fixed-installation systems. Please read this document and all safety warnings before attempting installation.

Do not attempt to service this product yourself. Refer all servicing to authorized service centers, installers, technicians, dealers or distributors. To contact Bose Professional or to find a dealer or distributor near you, visit [PRO.BOSE.COM](http://PRO.BOSE.COM).

1. Read these instructions.
2. Keep these instructions.
3. Heed all warnings.
4. Follow all instructions.
5. Do not use this apparatus near water.
6. Clean only with a dry cloth.
7. Do not block any ventilation openings. Install in accordance with the manufacturer's instructions.
8. Do not install near any heat sources such as radiators, heat registers, stoves, or other apparatus (including amplifiers) that produces heat.
9. Only use attachments/accessories specified by the manufacturer.

### **WARNINGS/CAUTIONS**



This product contains magnetic material. Consult your physician on whether this might affect your implantable medical device.

- All Bose products must be installed in accordance with local, state, federal and industry regulations. It is the installer's responsibility to ensure installation of the loudspeakers and mounting system is performed in accordance with all applicable codes, including local building codes and regulations. Consult the local authority having jurisdiction before installing this product.
- Unsafe mounting or overhead suspension of any heavy load can result in serious injury or death, and property


damage. It is the installer's responsibility to evaluate the reliability of any mounting method used for their application. Only professional installers with the knowledge of proper hardware and safe mounting techniques should attempt to install any loudspeaker overhead.


- Do not mount the product in locations where it may be exposed to water or condensation.
- This product is not intended for installation or use in indoor water facility areas (including, without limitation, indoor pools, indoor water parks, hot tub rooms, saunas, steam rooms and indoor skating rinks).
- Do not mount on surfaces that are not sturdy, or that have hazards concealed behind them, such as electrical wiring or plumbing. If you are not sure about installing the bracket, contact a qualified professional installer.
- Use only the hardware and accessories included or specified by Bose. Hardware for securing the mounting bracket to the mounting surface is not supplied. For information on compatible accessories, see the product's technical data sheet at PRO.BOSE.COM.
- Do not place or install the product near any heat sources, such as fireplaces, radiators, heat registers or other apparatus (including amplifiers) that produce heat.
- Keep the product away from fire and heat sources. Do not place naked flame sources, such as lighted candles, on or near the product.
- Do not make unauthorized alterations to this product.
- Do not expose loudspeaker or mounting components to any chemical substances that are not specified by Bose, including but not limited to lubricants, cleaning agents, contact sprays, or other hydrocarbon-based solvents. Exposure to such substances can lead to degradation of the plastic material, resulting in cracking and creating a falling hazard.
- Clean speakers using only a dry cloth. Do not expose loudspeaker to soap, detergent, mineral oil, alcohol or other cleaning agents or chemicals.


Product Ratings

	Input Voltage	Impedance	Current/Power
Series II Acoustimass Bass Module	70V/100V	6 Ω mono direct, transformer bypassed	25W, 50W, 100W, 200 W
Flush-mount Satellites	Not applicable	6 Ω	Not applicable
Surface-mount Satellites	Not applicable	6 Ω per channel (4-satellite system); 5 Ω per channel (2-satellite system)	Not applicable

Regulatory Information


 This product conforms to all applicable EU directive requirements. The complete declaration of conformity can be found at: [www.Bose.com/compliance](http://www.Bose.com/compliance).

 This product conforms to all applicable Electromagnetic Compatibility Regulations 2016 and all other applicable UK regulations. The complete declaration of conformity can be found at: [www.Bose.com/compliance](http://www.Bose.com/compliance)

 This symbol means the product must not be discarded as household waste, and should be delivered to an

appropriate collection facility for recycling. Proper disposal and recycling helps protect natural resources, human health and the environment. For more information on disposal and recycling of this product, contact your local municipality, disposal service, or the shop where you bought this product.

China Restriction of Hazardous Substances Table

Names and Contents of Toxic or Hazardous Substances or Elements						
	Toxic or Hazardous Substances and Elements					
Part Name	Lead (Pb)	Mercury (Hg)	Cadmium (Cd)	Hexavalent (CR(VI))	Polybrominated Biphenyl (PBB)	Polybrominated diphenylether (PBDE)
PCBs	X	0	0	0	0	0
Metal Parts	X	0	0	0	0	0
Plastic Parts	0	0	0	0	0	0
Speakers	X	0	0	0	0	0
Cables	X	0	0	0	0	0
This table is prepared in accordance with the provisions of SJ/T 11364. 0: Indicates that this toxic or hazardous substance contained in all of the homogeneous materials for this part is below the limit requirement of GB/T 26572.						
X: Indicates that this toxic or hazardous substance contained in at least one of the homogeneous materials used for this part is above the limit requirement of GB/T 26572.						

Taiwan Restriction of Hazardous Substances Table

<b>Equipment name:</b> FreeSpace 3 Series II Acoustimass Bass Module FreeSpace 3 Flush-mount Satellites FreeSpace 3 Surface-mount Satellites	<b>Type designation:</b> 040147, 040148 040150, 040149 040144, 040143
	Restricted substances and its chemical symbols

Unit	Lead (Pb)	Mercury (Hg)	Cadmium (Cd)	Hexavalent chromium (Cr + 6)	Polybrominated biphenyls (PBB)	Polybrominated Biphenyl ethers (PBDE)
PCBs	—	o	o	o	o	o
Metal Parts	—	o	o	o	o	o
Plastic Parts	o	o	o	o	o	o
Speakers	—	o	o	o	o	o
Cables	—	o	o	o	o	o
<p><b>Note 1:</b> “o” indicates that the percentage content of the restricted substance does not exceed the percentage of reference value of presence.</p> <p><b>Note 2:</b> The “-” indicates that the restricted substance corresponds to the exemption.</p>						

**Date of Manufacture:** The eighth digit in the serial number indicates the year of manufacture; “7” is 2007 or 2017.

**China Importer:** Bose Electronics (Shanghai) Company Limited, Level 6, Tower D, No. 2337 Gudai Rd. Minhang District, Shanghai 201100

**UK Importer:** Bose Limited Bose House, Quayside Chatham Maritime, Chatham, Kent, ME4 4QZ, United Kingdom

**EU Importer:** Bose Products B.V., Gorslaan 60, 1441 RG Purmerend, The Netherlands

**Mexico Importer:** Bose de México, S. de R.L. de C.V. , Paseo de las Palmas 405-204, Lomas de Chapultepec, 11000 México, D.F. For importer & service information: +5255 (5202) 3545

**Taiwan Importer:** Bose Taiwan Branch, 9F-A1, No. 10, Section 3, Minsheng East Road, Taipei City 104, Taiwan. Phone Number: +886-2-2514 7676

**Bose Corporation Headquarters:** 1-877-230-5639

Bose, Acoustimass, DesignMax, FreeSpace, and Panaray are trademarks of Bose Corporation.

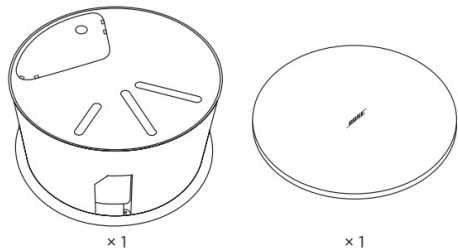
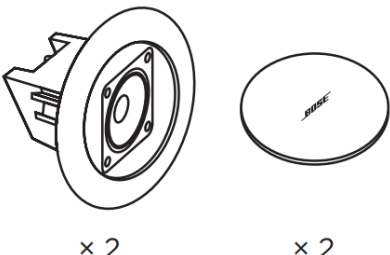
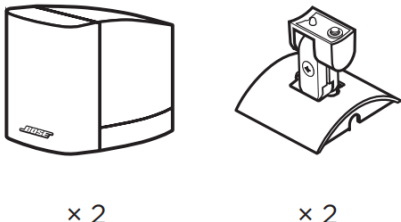
©2022 Bose Corporation. No part of this work may be reproduced, modified, distributed or otherwise used without prior written permission.

#### Warranty Information

This product is covered by a limited warranty.

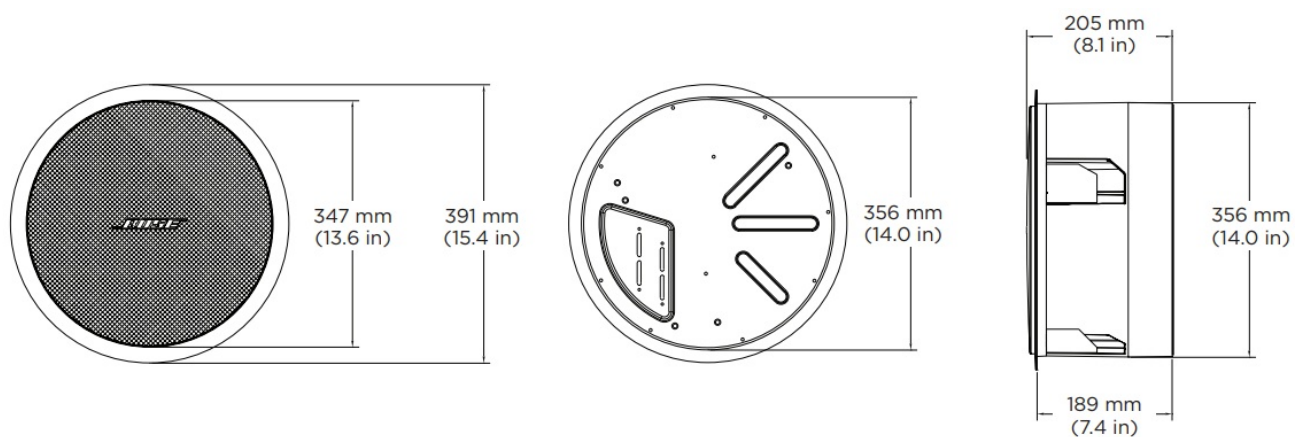
For warranty details, visit [PRO.BOSE.COM](https://pro.bose.com).

#### Package Contents

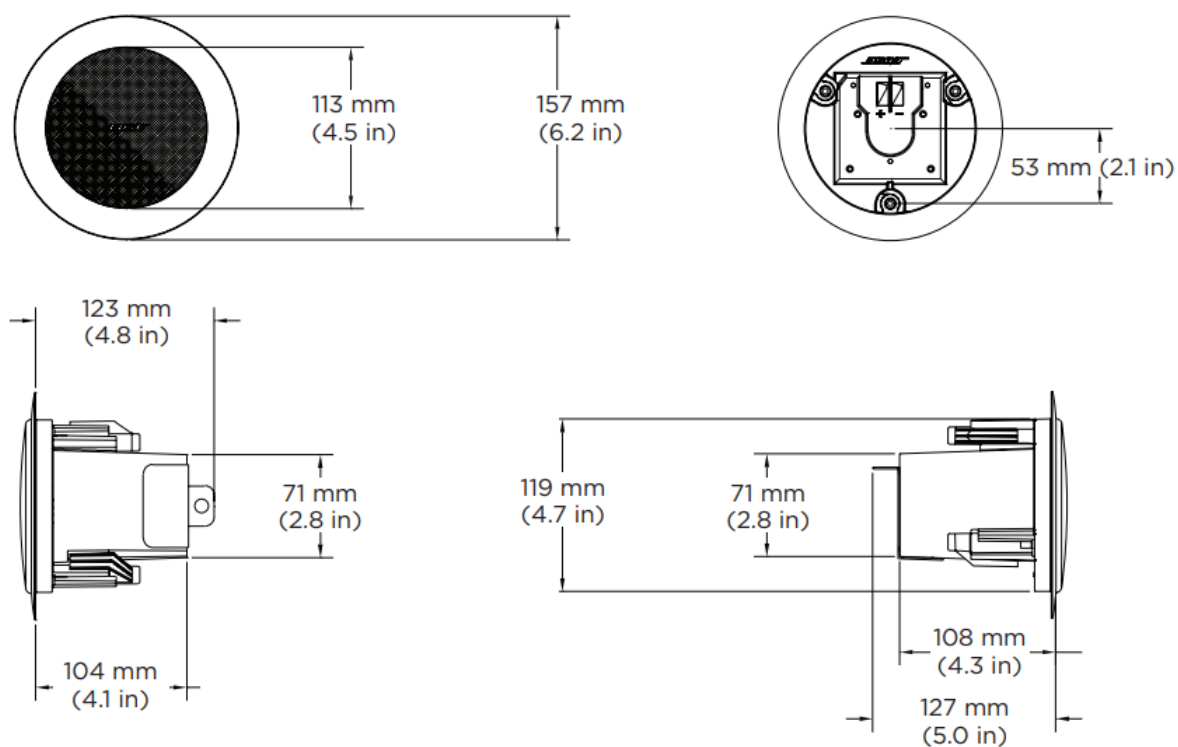
Series II Acoustimass Bass Module	Flush-mount Satellites	Surface-mount Satellites
 <div> <div>× 1</div> <div>× 1</div> </div>	 <div> <div>× 2</div> <div>× 2</div> </div>	 <div> <div>× 2</div> <div>× 2</div> </div>

## Product Dimensions

### Series II Acoustimass Bass Module

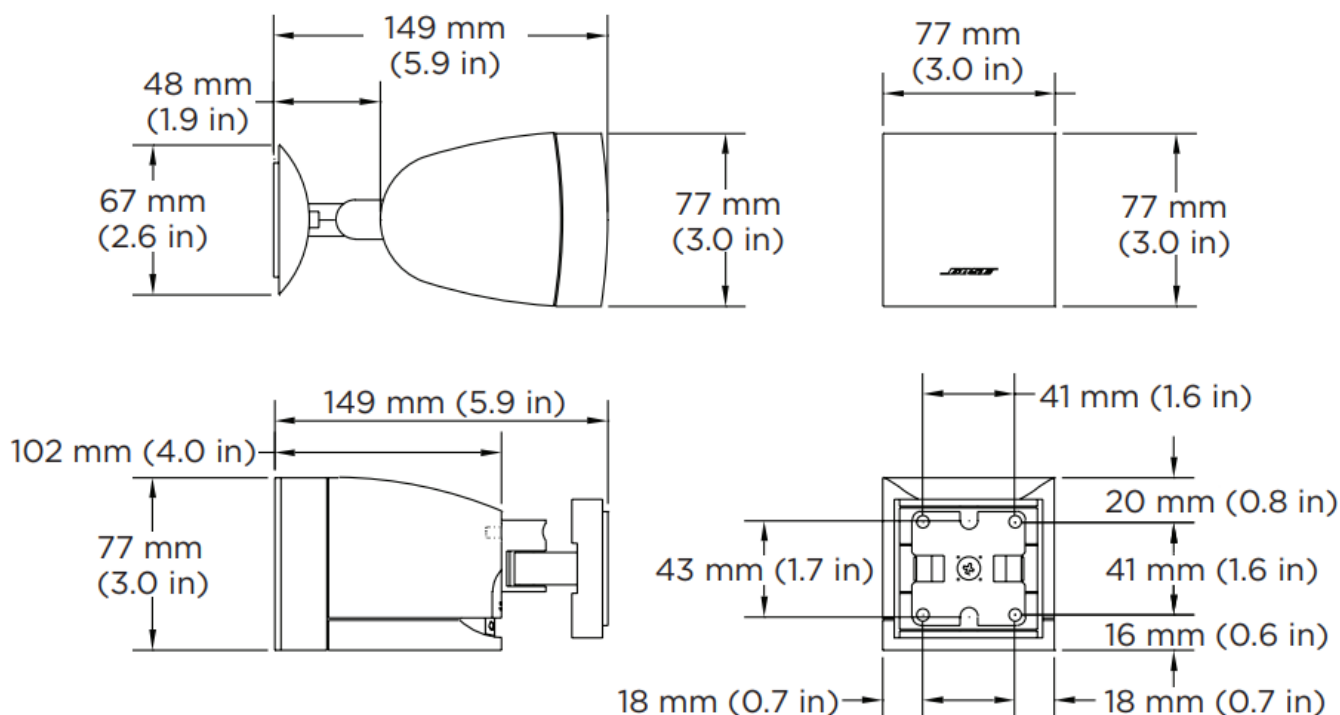


### Flush-mount Satellites



## Overview

### Surface-mount Satellites



## Technical Specifications

For additional specification, instructions, and technical information about any FreeSpace loudspeaker, visit [bosepro.link/freespace](https://bosepro.link/freespace).

	Series II Acoustimass Bass Module	Flush-mount Satellites	Surface-mount Satellites
<b>Product Dimensions</b>			
Height × Width	391 mm (15.4 in.) (outer flange diameter)	157 mm (6.2 in.) (outer flange diameter)	77 × 77 mm (3.0 × 3.0 in)
Depth	190 mm (7.5 in.)	123 mm (4.8 in)	Without bracket: 102 mm (4.0 in.) With bracket: 149 mm (5.9 in.)
<b>Ceiling Dimensions</b>			
Hole Diameter	362 mm (14.3 in.)	127 mm (5.0 in)	Not applicable
Maximum Thickness	48 mm (1.8 in.)	38 mm (1.5 in.)	Not applicable
<b>Weight</b>			
Net	6.4 kg (14.0 lb)	0.9 kg (1.9 lb)	0.8 kg (1.8 lb)
Shipping	9.1 kg (20.0 lb)	2.3 kg (5.0 lb)	1.8 kg (4.0 lb)

## Safety & Regulatory Compliance

The Bose FreeSpace-3 Series II Acoustimass Module and Flush-mount Satellites are UL listed for safety as: General Purpose Loudspeakers per UL1480, UL Category UEAY, File Number S 5591  
Suitable for use indoors in damp locations.

Suitable for installation using Class 1, Class 2 or Class 3 wiring methods in accordance with NFPA 70, National Electric Code, 2002, Article 640

Suitable for use in air handling plenum spaces when used with the PC-FS3B and PC-FS3F Plenum Cover Accessories:

UL-2043, Fire Test and Visible Smoke Release for Discrete Products and their Accessories Installed in Air Handling Spaces

NFPA-70, National Electrical Code, 2002, Article 300.22(C)

NFPA 90A, 2002, Installation of Air Conditioning and Ventilation Systems, Paragraph [4.3.10.2.6.5](#)

The Bose Freespace 3 Surface-mount Satellites described in this guide are not UL listed.



### **Important Installation Information**



It is the installer's responsibility to ensure installation of the loudspeakers and mounting system is performed in accordance with all applicable codes, including local building codes and regulations. Consult the local authority having jurisdiction before installing this product.

It is the responsibility of the installer to ensure the safety of the loudspeaker installation. Failure to properly install the loudspeaker could result in damage, injury, or death.

Do not mount the product in locations where it may be exposed to water or condensation.

This product is not intended for installation or use in indoor water facility areas (including, without limitation, indoor pools, indoor water parks, hot tub rooms, saunas, steam rooms and indoor skating rinks).

Do not block any ventilation openings. Install in accordance with the manufacturer's instructions.

Do not install near any heat sources such as radiators, heat registers, stoves, or other apparatus (including amplifiers) that produces heat.

Keep the product away from fire and heat sources. Do not place naked flame sources, such as lighted candles, on or near the product.

Do not mount on surfaces that are not sturdy, or that have hazards concealed behind them, such as electrical wiring or plumbing. If you are not sure about installing the bracket, contact a qualified professional installer.

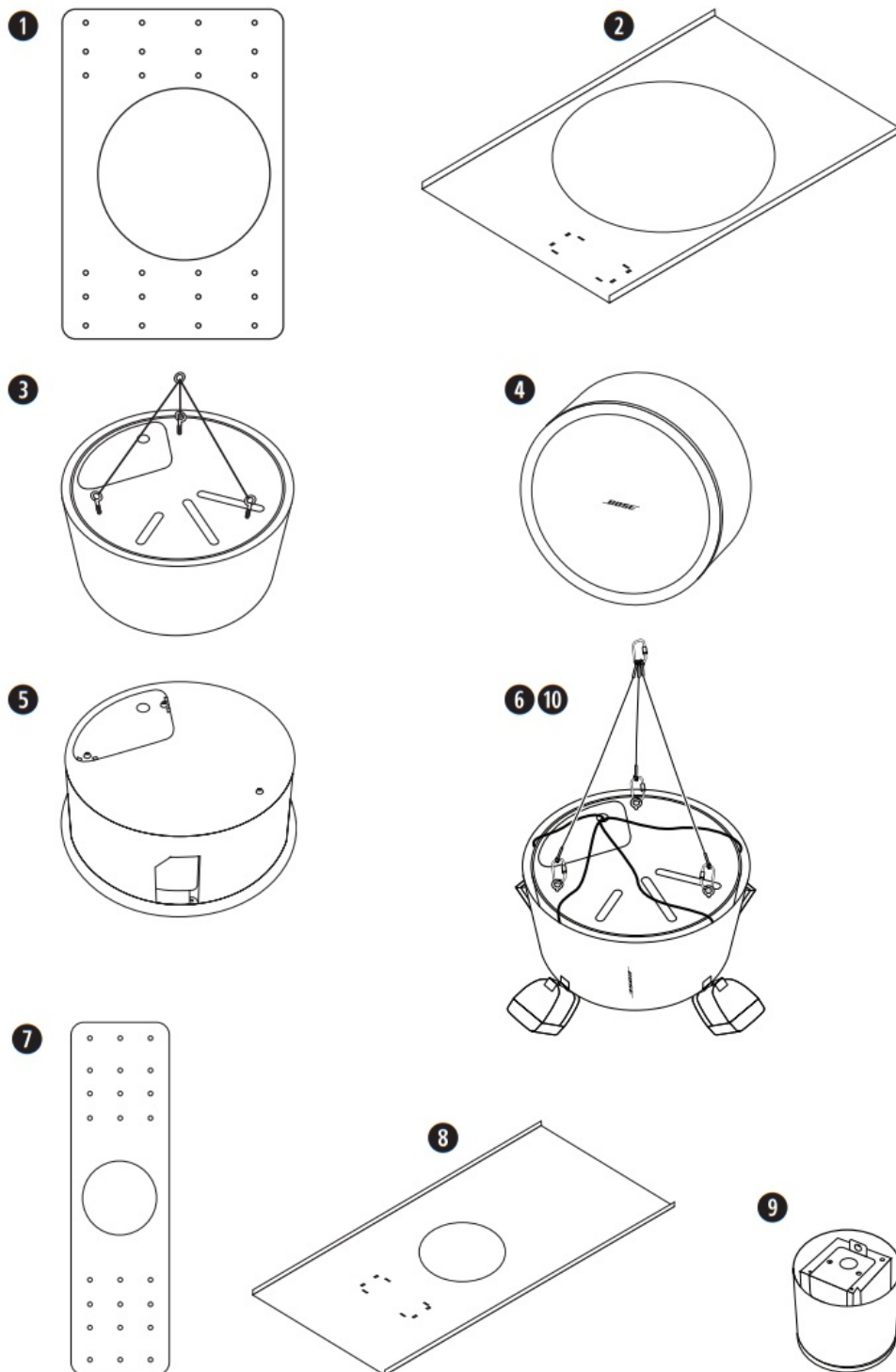
Ensure the bracket is installed according to local building codes.

The hardware for securing the loudspeaker to the mounting surface is not supplied. Consult a building professional for the proper mounting hardware before installing the loudspeaker.

Do not expose loudspeaker or mounting components to any chemical substances that are not specified by Bose, including but not limited to lubricants, cleaning agents, contact sprays, or other hydrocarbon-based solvents. Exposure to such substances can lead to degradation of the plastic material, resulting in cracking and creating a falling hazard.

## **Installation Options**





**Series II Acoustimass Bass Module  
Required**

1. FreeSpace 3BF Bass Loudspeaker Rough-In Pan  
or
2. FreeSpace 3BF Bass Loudspeaker Tile Bridge

**Optional**

3. FreeSpace 3BF Bass Loudspeaker Pendant-mounting Kit
4. FreeSpace 3BF Bass Loudspeaker Surface-mount Kit
5. FreeSpace 3BF Bass Loudspeaker Plenum Cover
6. FreeSpace Omni Pendant-mount Kit

**Flush-mount Satellites**

## Required

7. FreeSpace 3F Satellite Loudspeaker Rough-in Pan

or

8. FreeSpace 3F Satellite Loudspeaker Tile Bridge

## Optional

9. FreeSpace 3F Satellite Loudspeaker Cosmetic Covers

## Surface-mount Satellites

10. FreeSpace Omni Pendant-mount Kit

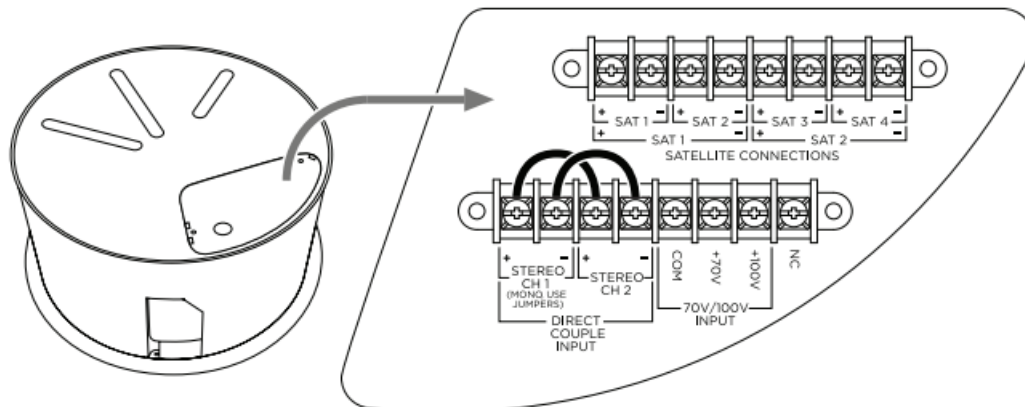
## Wiring the Loudspeaker

### Wire Gauge

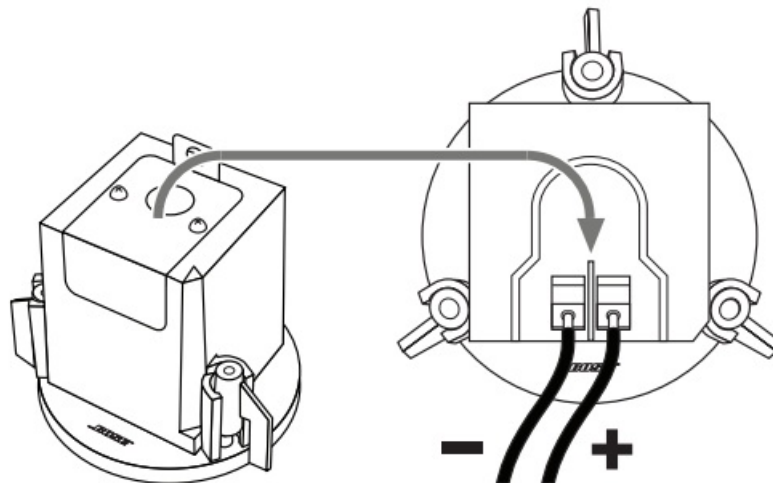
FreeSpace 3 loudspeakers are designed to work with 18 AWG (0.8 mm<sup>2</sup>) to 14 AWG (2.1 mm<sup>2</sup>) size wire only.

### Wiring Terminals

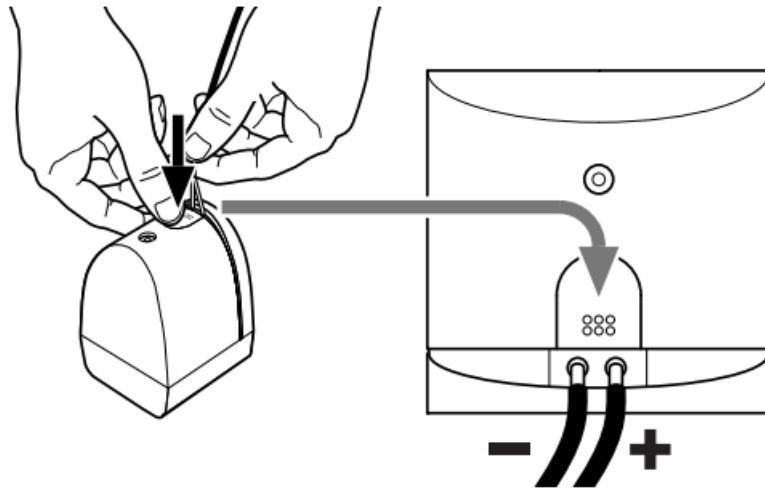
**Series II Acoustimass bass module:** Remove the rear cover plate to access the wiring terminals. Reattach the rear cover plate after completing all wiring connections.



**Flush-mount Satellites:** Remove the rear cover plate to access the wiring terminals. Reattach the rear cover plate after completing all wiring connections.

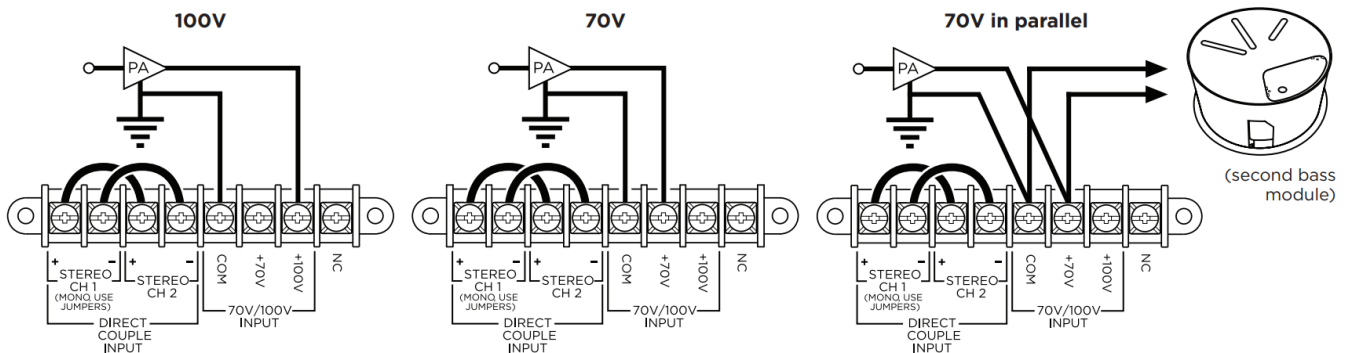


**Surface-mount Satellites:** Push and hold the button on the rear panel while inserting the wire to insert the wire fully.



## Amplifier Output Connection

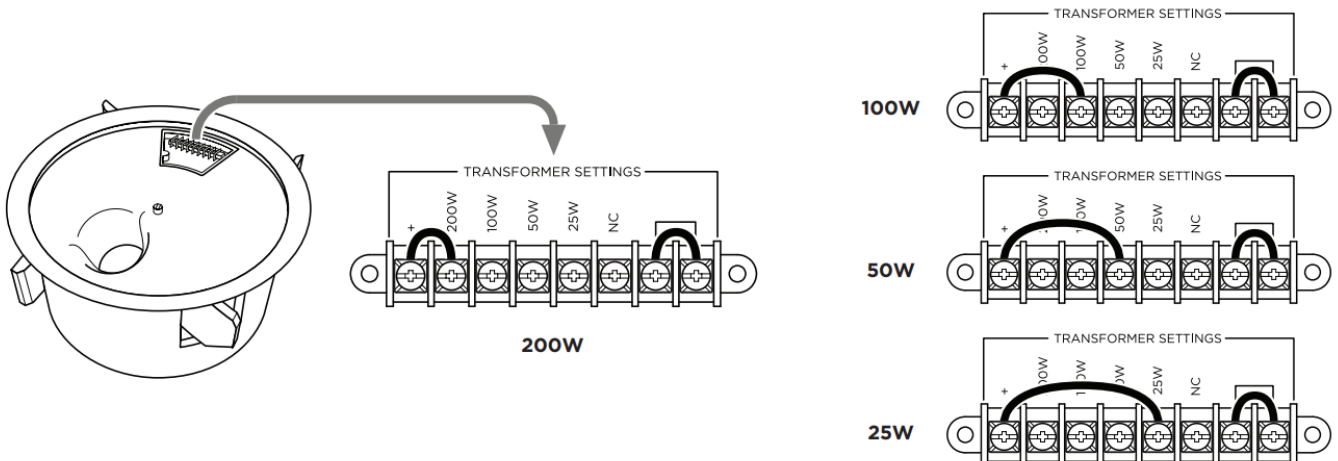
**CAUTION:** Complete all wiring connections before connecting an amplifier to power or powering it on.



## Transformer Tap Settings

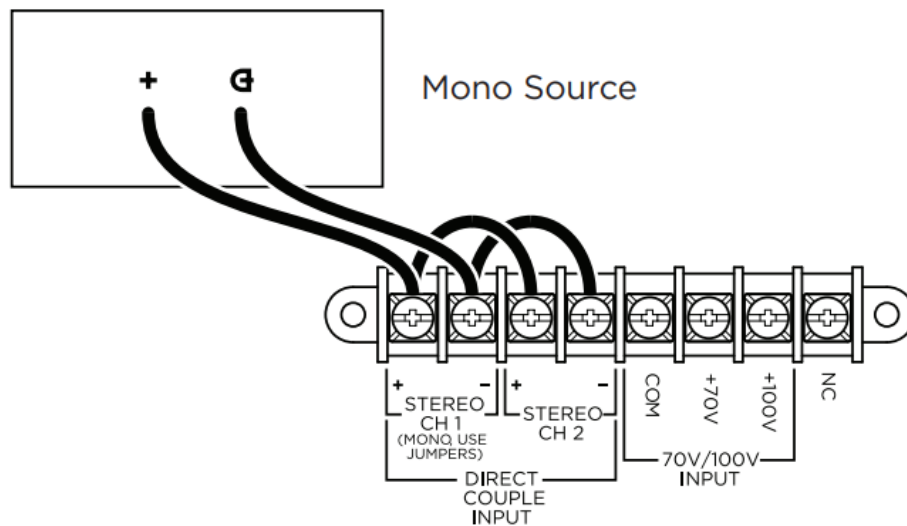
The transformer tap is set at the factory for 200W use. To set it for a lower wattage, remove the end of the + jumper wire that is connected to the 200W terminal and reattach it to the appropriate tap: 100W, 50W, or 25W.

**Note:** The jumper wires are required for 70V/100V operation. For 6Ω operation (transformer bypass/direct), remove both jumper wires.



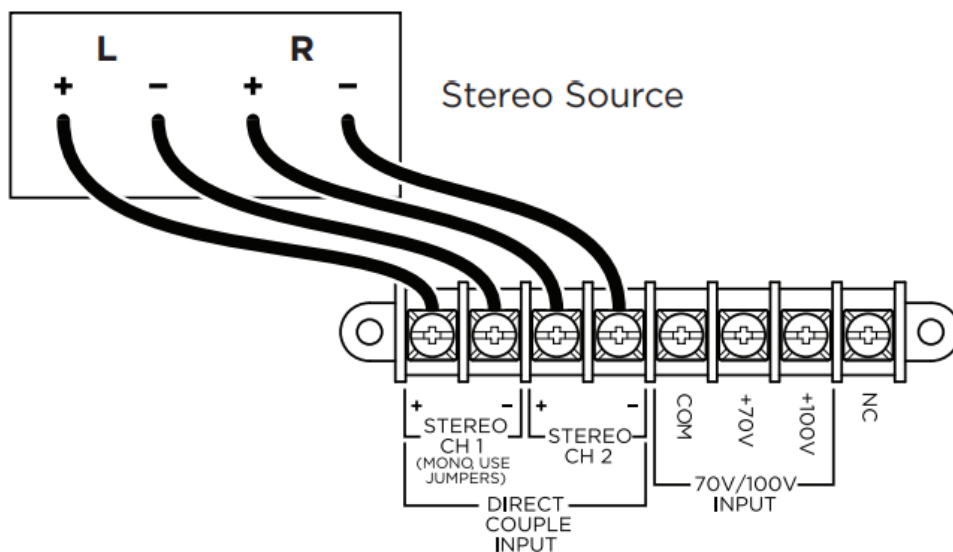
## Transformer Bypass (Direct Mono)

To bypass the transformer and prepare the loudspeaker for 4Ω use and mono sound input, remove the two jumpers from the transformer settings on the front of the loudspeakers. Leave the CH1 and CH2 input jumpers on the back of the loudspeaker as they are.



### Transformer Bypass (Direct Stereo)

To bypass the transformer and prepare the loudspeaker for 6Ω use and stereo sound input, remove all jumper wires.

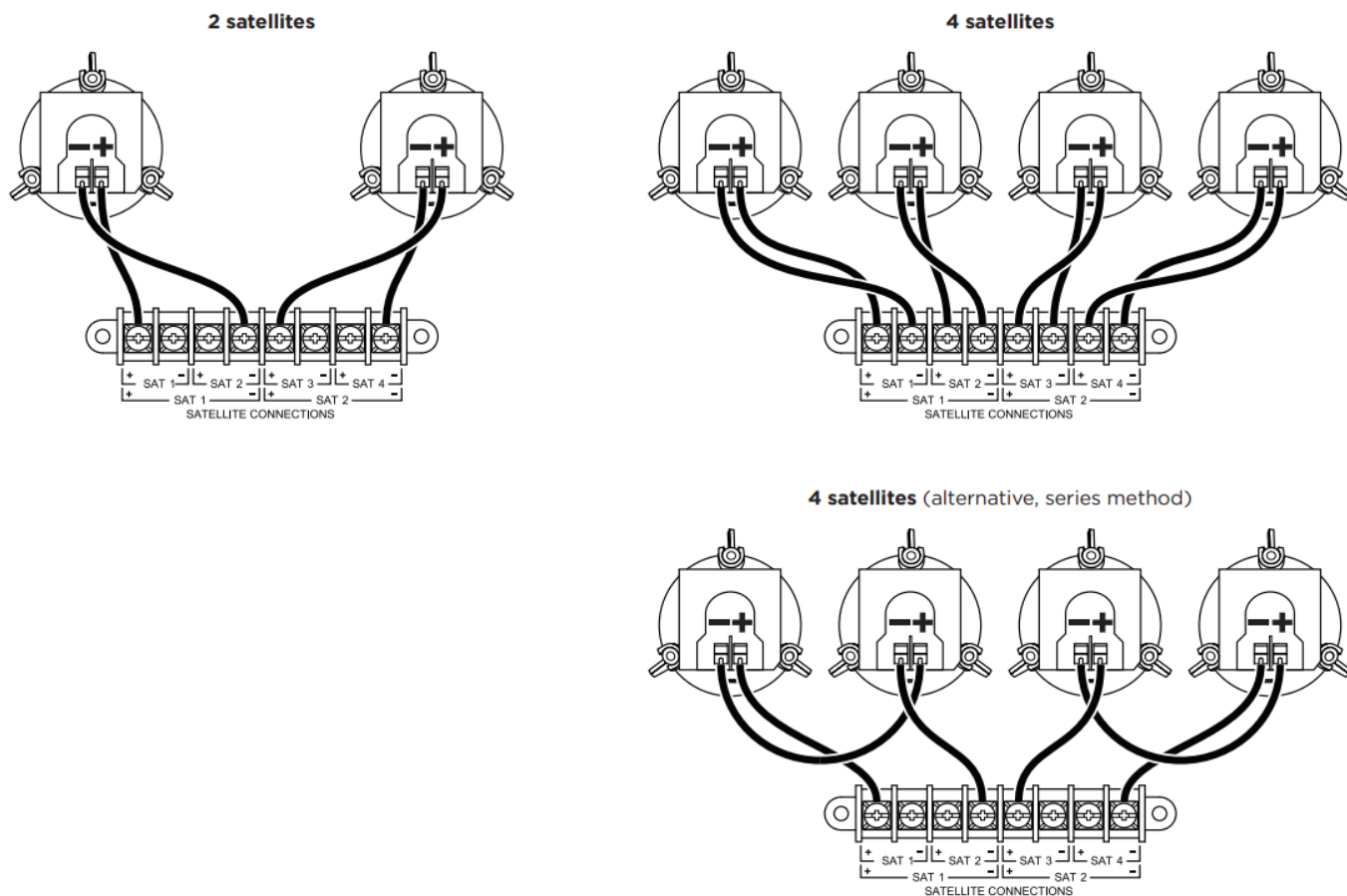


### Satellite Loudspeaker Connection

**CAUTION:** Do not connect any loudspeakers other than FreeSpace 3 satellite loudspeakers directly to the module.

Connect the FreeSpace 3 Series II Acoustimass bass module to FreeSpace 3 Flush-mount Satellites or Surface-mount Satellites. (On this page, the Series II Acoustimass module is shown connected to the Flush-mount Satellites. You may substitute Surface-mount Satellites for any Flush-mount Satellites as long as you wire them with the correct polarity.)

You can use the FreeSpace 3 Series II Acoustimass module with other Bose loudspeakers, including but not limited to FreeSpace, DesignMax, or Panaray models. If you do this, connect both the loudspeakers and the module directly to the amplifier, using separate channels. Ensure that you apply appropriate band-pass filtering and/or the recommended equalization (if available) to all other loudspeakers. Visit [PRO.BOSE.COM](http://PRO.BOSE.COM) and refer to the technical data sheet for each model.



## Preparing the Installation

### Loudspeaker Placement

**Note:** Installation in close proximity to cooking surfaces where the loudspeaker may be directly exposed to cooking oils, steam, vapor, or high heat such as in commercial cooking environments may decrease the performance or reliability of the loudspeaker.

### Using a Safety Cable

Some regional construction codes require the use of a secondary method of securing loudspeakers to support structures to provide additional safety. Choose a mounting position, method, and hardware consistent with local building codes and regulations.

Bose recommends using a safety wire or a safety cable as a secondary securing mechanism for the Series II Acoustimass bass module and Flush-mount Satellites. Follow the manufacturer's instructions for any secondary securing mechanism implemented.

Each loudspeaker model has one or more possible attachment points:

**Series II Acoustimass Bass Module** Remove an M6 screw from the rear cover plate, and attach a safety cable to that screw hole.

**Flush-mount Satellites** Attach a safety cable to the opening in the metal tab on the rear cover plate.

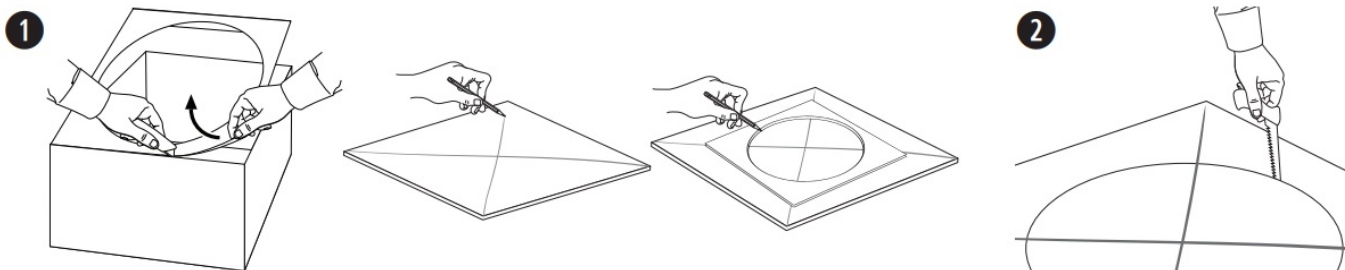
### Preparing the Ceiling & Accessories

Before installing a bass module or satellite loudspeakers, follow the instructions to prepare the ceiling and any accessories you will use in the installation. See Installation Options (Page 5) for a list of required or optional accessories for each loudspeaker model.

### Preparing Acoustic Ceiling Tile

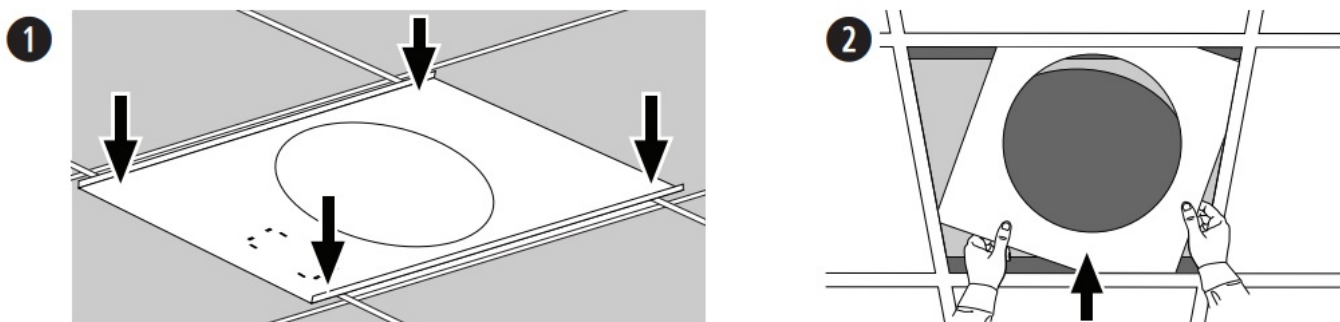
#### Cutting the Ceiling Tile

1. Remove the tile and use the template to trace a loudspeaker hole onto the tile. To center the template on the tile, draw an X by connecting the corners diagonally and center the template using the crossing point.
2. Cut a hole into the tile.



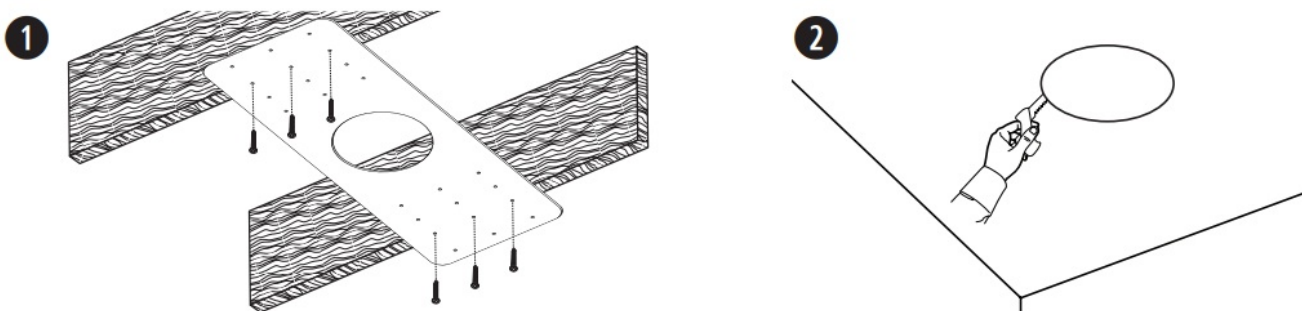
## Installing the Tile Bridge

1. Place the tile bridge across the ceiling grid. If necessary, adjust the tile bridge so the rails rest on the ceiling grid.
2. Replace the tile in the ceiling.



## Preparing Hard Ceiling Using a Rough-in Pan (New Construction)

1. Attach rough-in pan to the ceiling furring or wood studs. The rough-in pan includes multiple pre-drilled holes to accommodate different stud spacing, loudspeaker orientations, and loudspeaker placements.
2. After the ceiling is finished, cut a hole in the finished ceiling, using the rough-in pan as a guide.



## Mounting the Loudspeaker

### Series II Acoustimass Bass Module

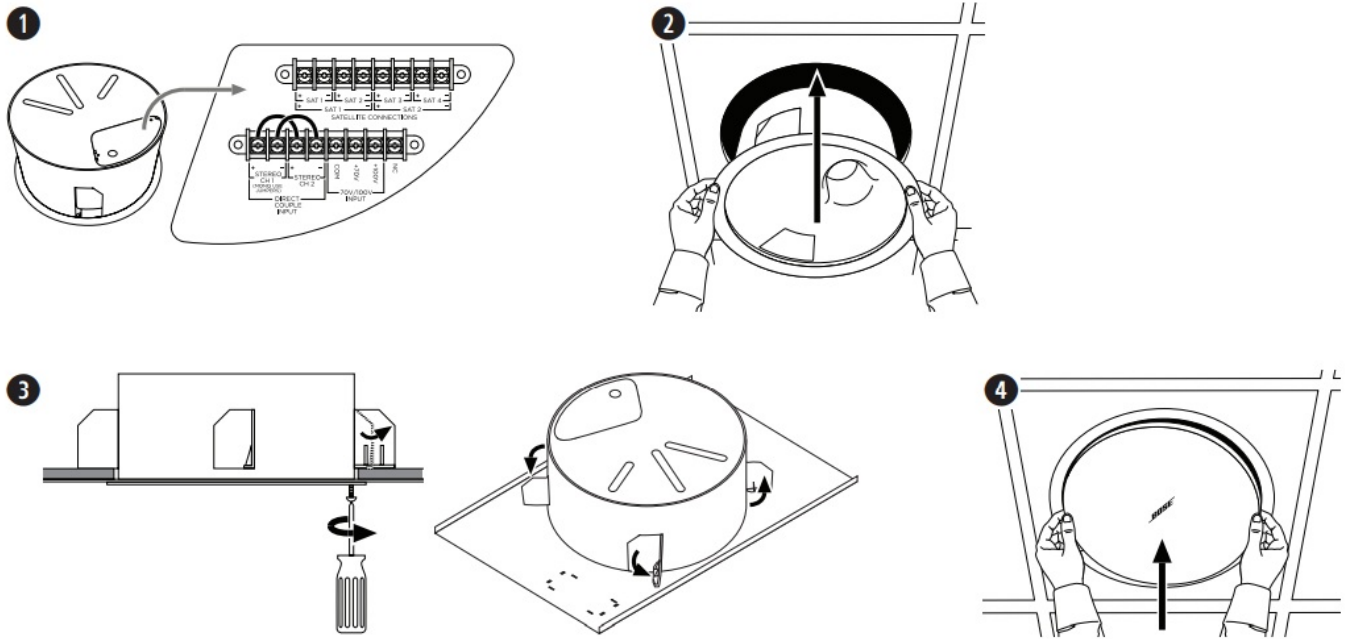
1. Make sure all loudspeaker wiring connections are complete. For wiring information, see Wiring the Loudspeaker (Page 6).
2. Insert the loudspeaker through the hole and into the tile bridge or rough-in pan. Continue to hold the loudspeaker in place.
3. Tighten the anchor arm screws to secure the loudspeaker. If using a power drill, set to a low torque setting. Make sure all of the anchors are tightened before loosening your grip on the loudspeaker.



**WARNING:** Over-tightening the screws may result in damage to the anchor attachment point or the ceiling, which could lead to a falling hazard.

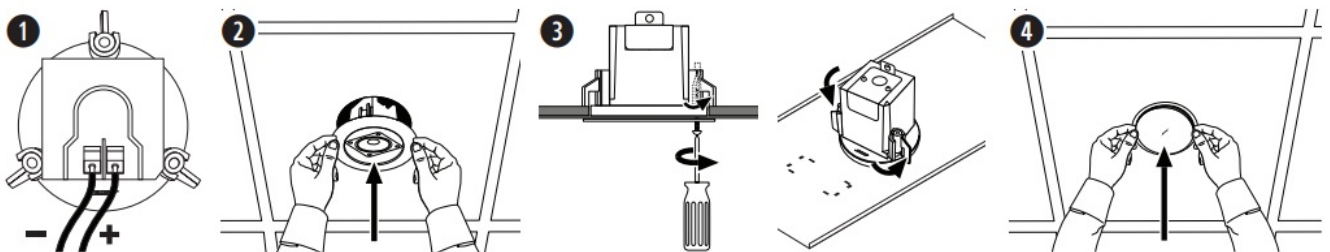


- Using both hands, position the grille against the loudspeaker. Gently push the grille against the loudspeaker to secure it. You can rotate the logo when the grille is secured.



### Flush-mount Satellites

- Make sure all loudspeaker wiring connections are complete. For wiring information, see [Wiring the Loudspeaker](#) (Page 6).
- Insert the loudspeaker through the hole and into the tile bridge or rough-in pan. Continue to hold the loudspeaker in place.
- Tighten the anchor arm screws to secure the loudspeaker. If using a power drill, set to a low torque setting. Make sure all of the anchors are tightened before loosening your grip on the loudspeaker.  
**WARNING:** Over-tightening the screws may result in damage to the anchor attachment point or the ceiling, which could lead to a falling hazard.
- Using both hands, position the grille against the loudspeaker. Gently push the grille against the loudspeaker to secure it.

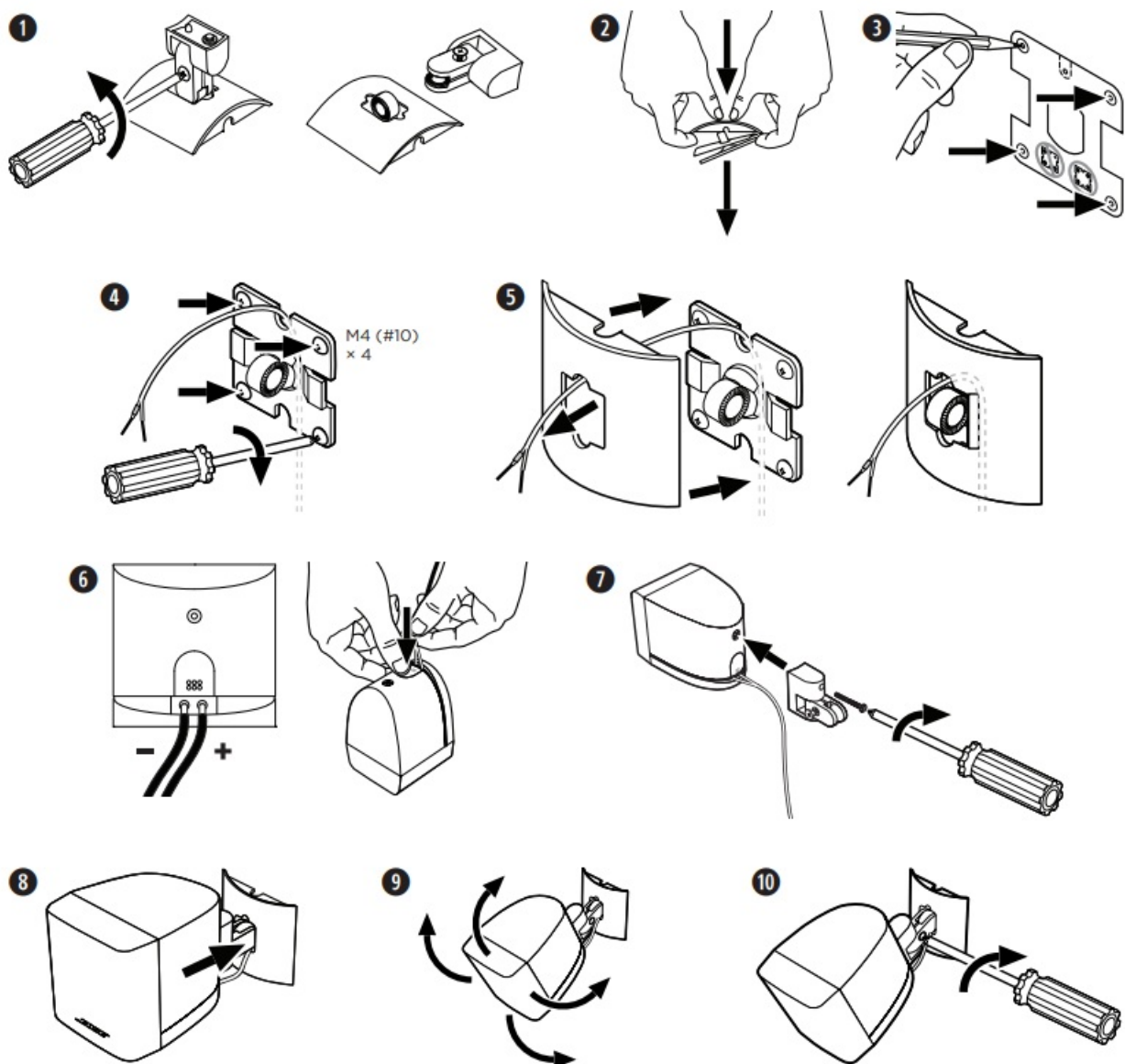


## Installation

### Surface-mount Satellites

- Loosen the screw connecting the loudspeaker arm to the wall-mount bracket, and separate the two parts.
- Separate the rear plate from the cover the wall-mount bracket.
- Use the template to mark the center of all four screw holes on the wall.

4. Insert four M4 (#10) screws to attach the wall-mount bracket plate to the wall. Make sure the point where the loudspeaker wire exits the wall is aligned with a notch of the plate.
5. Reattach the wall-mount bracket cover to the plate, threading the loudspeaker wire through the center hole of the wall-mount bracket cover.
6. Connect the wire to the loudspeaker. For wiring information, see Wiring the Loudspeaker (Page 6).
7. Use the included screw to attach the loudspeaker arm to the threaded insert on the rear panel of the loudspeaker.
8. Place the loudspeaker arm on the wall-mount bracket by aligning the two parts of the rotating joint (which you separated in Step 1).
9. Adjust the vertical and horizontal angles of the loudspeaker as desired.
10. Insert the screw (which you removed in Step 1) into the rotating joint. Tighten the screw to secure the loudspeaker to the wall-mount bracket at the desired angle.



263579-0020



©2022 Bose Corporation, All rights reserved.  
Framingham, MA 01701-9168 USA

[PRO.BOSE.COM](https://pro.bose.com)

AM263579 Rev. 04

May 2022



## Documents / Resources

**FreeSpace 3**

Series II Acoustimass Bass Module

Surface-mount Satellite

Model	FS3	1
Power	150W	1
Frequency Response	20-200Hz	1
Impedance	16Ω	1
Dimensions (HxWxD)	10.5x10.5x4.5	1
Weight	1.5	1

## [BOSE FreeSpace 3 Series II Acoustimass Bass Module](#) [pdf] Installation Guide

FreeSpace 3 Series II Acoustimass Bass Module, FreeSpace 3, Series II Acoustimass Bass Module, Acoustimass Bass Module, Bass Module, Module

## References

- [Bose Professional](#)
- [Bose European Union Regulatory and Compliance Information](#)

[Manuals+](#)