



**DesignMax DM2C-LP
In-ceiling Loudspeaker**

Contents [[hide](#)]

- [1 Important Safety Instructions](#)
- [2 Overview](#)
- [3 Setup](#)
- [4 Wiring the Loudspeaker](#)
- [5 Preparing the Installation](#)
- [6 Installation](#)
- [7 Documents / Resources](#)
 - [7.1 References](#)

Important Safety Instructions

Please read and keep all safety and use instructions.

This product is intended for installation by professional installers only! This document is intended to provide professional installers with basic installation and safety guidelines for this product in typical fixed-installation systems. Please read this document and all safety warnings before attempting installation.

Do not attempt to service this product yourself. Refer all servicing to authorized service centers, installers, technicians, dealers or distributors. To contact Bose Professional or to find a dealer or distributor near you, visit BoseProfessional.com.

1. Read these instructions.
2. Keep these instructions.
3. Heed all warnings.
4. Follow all instructions.
5. Do not use this apparatus near water.
6. Clean only with a dry cloth.
7. Do not block any ventilation openings. Install in accordance with the manufacturer's instructions.
8. Do not install near any heat sources such as radiators, heat registers, stoves, or other apparatus (including amplifiers) that produces heat.
9. Only use attachments/accessories specified by the manufacturer.

WARNINGS/CAUTIONS



This product contains magnetic material. Consult your physician on whether this might affect your implantable medical device.

- All Bose Professional products must be installed in accordance with local, state, federal and industry regulations. It is the installer's responsibility to ensure installation of the loudspeakers and mounting system is performed in accordance with all applicable codes, including local building codes and regulations. Consult the local authority having jurisdiction before installing this product.
- Unsafe mounting or overhead suspension of any heavy load can result in serious injury or death, and property damage. It is the installer's responsibility to evaluate the reliability of any mounting method used for their application. Only professional installers with the knowledge of proper hardware and safe mounting techniques

should attempt to install any loudspeaker overhead.

- Do not mount the product in locations where condensation may occur.
- This product is not intended for installation or use in indoor water facility areas (including, without limitation, indoor pools, indoor water parks, hot tub rooms, saunas, steam rooms and indoor skating rinks).
- Do not mount on surfaces that are not sturdy, or that have hazards concealed behind them, such as electrical wiring or plumbing. If you are not sure about installing the bracket, contact a qualified professional installer. Ensure the bracket is installed according to local building codes.
- Use only the hardware and accessories included or specified by Bose Professional for use with DesignMax DM2C-LP loudspeakers. For information on compatible accessories, see the product's technical data sheet at [BoseProfessional.com](https://www.boseprofessional.com).
- Keep the product away from fire and heat sources. Do not place naked flame sources, such as lighted candles, on or near the product.
- Do not make unauthorized alterations to this product.
- Do not use hydrocarbon based solvents, lubricants or cleaning agents of any type on or around this loudspeaker and associated mounting hardware during installation. Exposure to such substances can lead to degradation of the plastic material, resulting in cracking and creating a falling hazard.
- Clean speakers using only a dry cloth. Do not expose loudspeaker to soap, detergent, mineral oil, alcohol or other cleaning agents or chemicals.
- The grille is equipped with a safety lanyard pin designed for a single use.


Product Ratings:


Input Voltage: 70V/100V

Impedance: 16 Ω , 16 W

Current or Power: (70V): 1.2W, 2.3W, 4.5W, 9W; (100V): 2.3W, 4.5W, 9W

Regulatory Information

 This product conforms to all applicable EU directive requirements. The complete declaration of conformity can be found at the product-specific page: [BoseProfessional.com](https://www.boseprofessional.com)

 This product conforms to all applicable Electromagnetic Compatibility Regulations 2016 and all other applicable UK regulations. The complete declaration of conformity

can be found at the product-specific page: [BoseProfessional.com](https://www.boseprofessional.com)



This symbol means the product must not be discarded as household waste, and should be delivered to an appropriate collection facility for recycling. Proper disposal and recycling helps protect natural resources, human health and the environment. For more information on disposal and recycling of this product, contact your local municipality, disposal service, or the shop where you bought this product.

China Restriction of Hazardous Substances Table

Names and Contents of Toxic or Hazardous Substances or Elements						
	Toxic or Hazardous Substances and Elements					
Part Name	Lead (Pb)	Mercury (Hg)	Cadmium (Cd)	Hexavalent Chromium (CR(VI))	Polybrominated Biphenyl (PBB)	Polybrominated Diphenyl Ether (PBDE)
PCBs	X	0	0	0	0	0
Metal Parts	X	0	0	0	0	0
Plastic Parts	0	0	0	0	0	0
Speakers	X	0	0	0	0	0
Cables	X	0	0	0	0	0
<p>This table is prepared in accordance with the provisions of SJ/T 1136 4.</p> <p>0: Indicates that this toxic or hazardous substance contained in all of the homogeneous materials for this part is below the limit requirement of GB/T 26572.</p>						

X: Indicates that this toxic or hazardous substance contained in at least one of the homogeneous materials used for this part is above the limit requirement of GB/T 26572.

Taiwan Restriction of Hazardous Substances Table

Equipment name: DesignMax DM2C-LP, Type designation: 796780						
	Restricted substances and its chemical symbols					
Unit	Lead (Pb)	Mercury (Hg)	Cadmium (Cd)	Hexavalent chromium (Cr+6)	Polybrominated biphenyls (PBB)	Polybrominated diphenyl ethers (PBDE)
PCBs	—	o	o	o	o	o
Metal Parts	—	o	o	o	o	o
Plastic Parts	o	o	o	o	o	o
Speakers	—	o	o	o	o	o
Cables	—	o	o	o	o	o
<p>Note 1: “o” indicates that the percentage content of the restricted substance does not exceed the percentage of reference value of presence.</p> <p>Note 2: The “-” indicates that the restricted substance corresponds to the exemption.</p>						

Date of Manufacture: The eighth digit in the serial number indicates the year of manufacture; “7” is 2007 or 2017.

EU Importer: Transom Post Netherlands B.V., Keizersgracht 391A, 1016 EJ, Amsterdam

UK Importer: Transom Post Netherlands UK, Squires House 205a High Street, West

Wickham, BR4 0PH | Japan Importer: Transom Post International Japan KK Co., Ltd.
PMO Tamachi IV Shiba5-29-19, Minato-ku, Tokyo | Australia Importer: Transom Post
Australia Pty. Ltd., Level 14, 60 Margaret Street, Sydney, NSW 2000 | China Importer:
Transom Post (Shanghai) Audio Co. Ltd Room 2209, Building 1, 175 Longyao Road,
Xuhui District, Shanghai | Mexico Importer: POST INTL MEXICO, S. DE R.L. DE C.V.
Insurgentes Sur No. 1079, 1st floor, Colonia Noche Buena, Benito Juárez, C.P. 03270,
Mexico City | UAE

Importer: 102 A, Sama Tower Sheikh Zayed Road, Dubai UAE

Bose is a trademark of Bose Corporation.

DesignMax is a trademark of Transom Post OpCo LLC.

Bose Professional, 117 South St, Hopkinton, MA 01748 USA

©2024 Transom Post OpCo LLC. No part of this work may be reproduced, modified,
distributed or otherwise used without prior written permission.

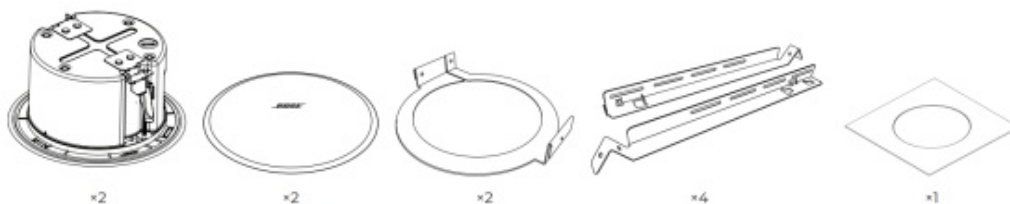
Warranty Information

This product is covered by a limited warranty.

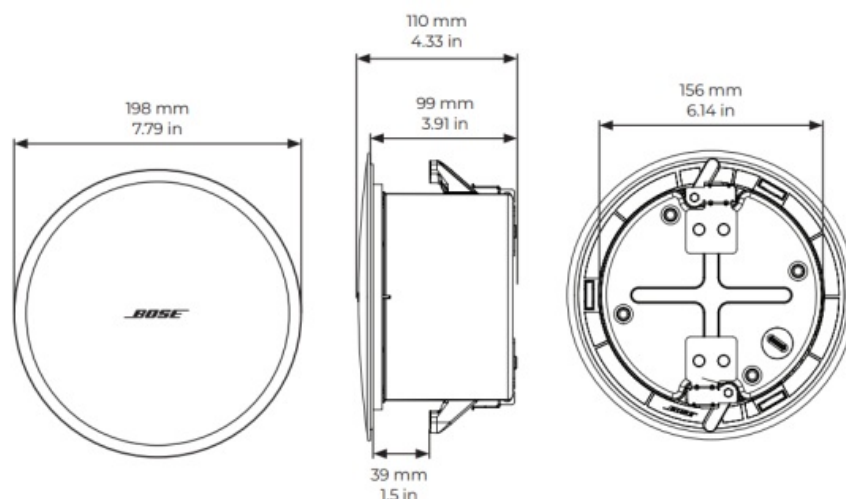
For warranty details, visit BoseProfessional.com/Warranty.

Overview

Package Contents



Product Dimensions




Technical Specifications

For additional specifications, see the DesignMax DM2C-LP technical data sheet at BoseProfessional.com.


Physical

Product Dimensions	Grille diameter: 198 mm (7.79 in)
	Enclosure diameter: 156 mm (6.14 in)
	Backcan depth: 99 mm (3.91 in)
Hole cutout	165 mm (6.5 in)
Maximum Ceiling Thickness	39 mm (1.5 in)
Net Weight, Loudspeaker with grille (single)	1.63 kg (3.6 lb)
Net Weight, Tile Bridge (single)	0.72 kg (1.6 lb)
Shipping Weight (pair)	5.99 kg (13.2 lb)


Important Installation Information

 It is the installer's responsibility to ensure installation of the loudspeakers and mounting system is performed in accordance with all applicable codes, including local building codes and regulations. Consult the local authority having jurisdiction before installing this product.

It is the responsibility of the installer to ensure the safety of the loudspeaker installation. Failure to properly install the loudspeaker could result in damage, injury, or death. Do not mount the product in locations where condensation may occur.

 This product is not intended for installation or use in indoor water facility areas (including, without limitation, indoor pools, indoor water parks, hot tub rooms, saunas, steam rooms and indoor skating rinks).

Do not mount on surfaces that are not sturdy, or that have hazards concealed behind them, such as electrical wiring or plumbing. If you are not sure about installing the bracket, contact a qualified professional installer. Ensure the bracket is installed according to local building codes.

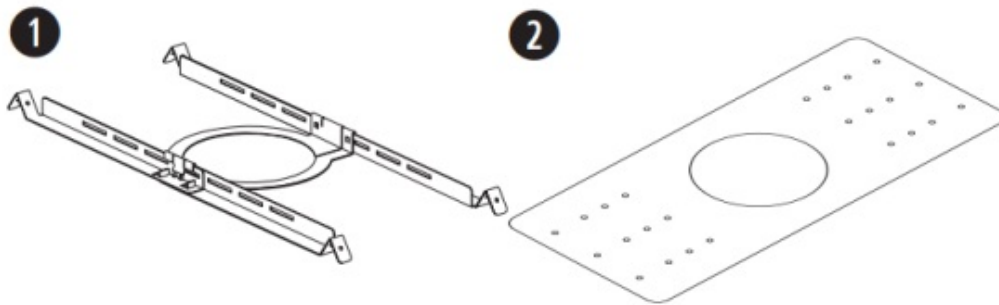
 Do not use hydrocarbon based solvents, lubricants or cleaning agents of any type on or around this loudspeaker and associated mounting hardware during installation. Exposure to such substances can lead to degradation of the plastic material, resulting in cracking and creating a falling hazard.

Setup

Installation Options

Installation Options and Accessories

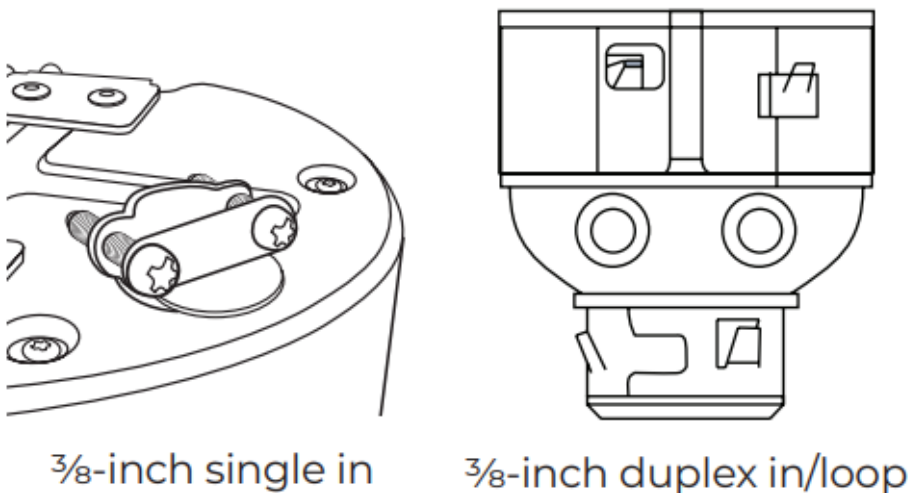
1. Adjustable Tile Bridge (included)
2. Rough-in Pan (optional)



Conduit Fitting

If using a flexible metal conduit, use with a 3/8-inch conduit fitting or a 3/8-inch dual (duplex) connector.

Note: Conduit fittings are not provided.



Choosing an Installation Method

1. Top Knockout

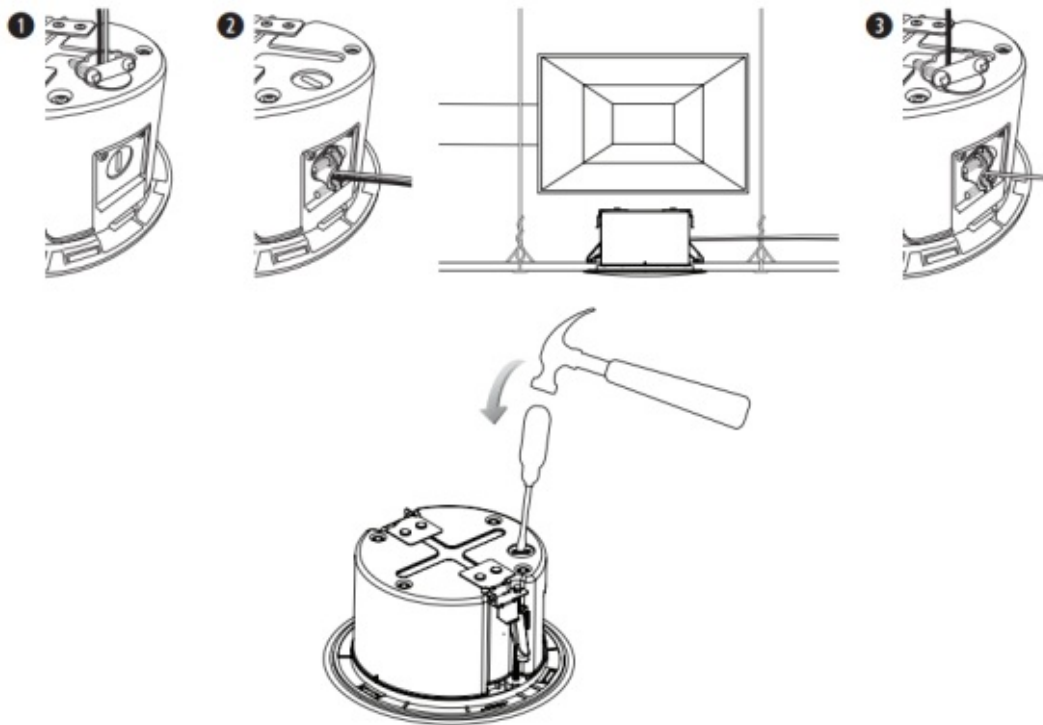
Use the top knockout when there is available space above the ceiling.

2. Side Knockout

Use the side knockout when there is limited space above the ceiling.

3. Both Knockouts

Use both knockouts when an independent signal-in and signal-out wiring scheme is required and there is available space above the ceiling.



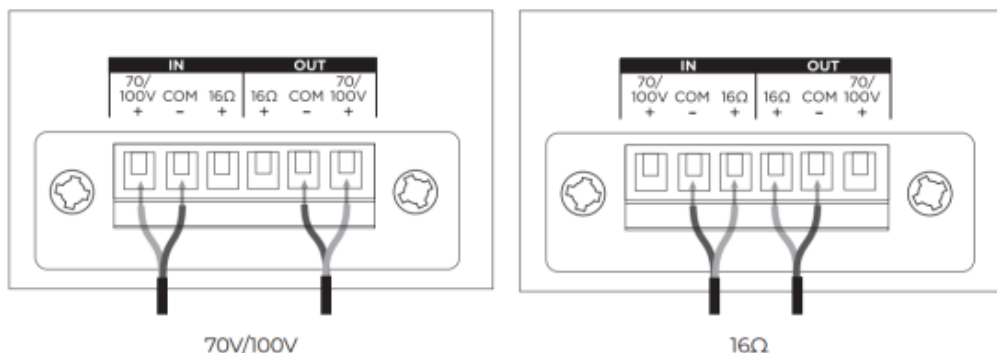
Wiring the Loudspeaker

Wire Gauge

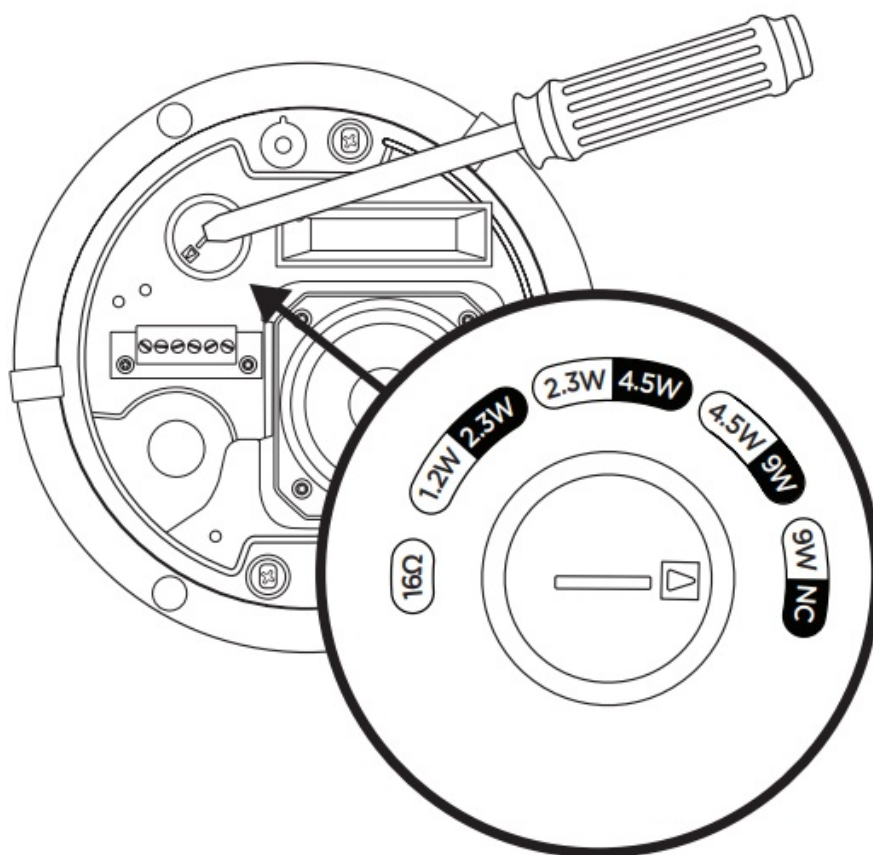
The DesignMax DM2C-LP loudspeaker is designed to work with 18 AWG (0.8 mm²) to 14 AWG (2.1 mm²) size wire only.

Connection Diagrams

Expose six millimeters (1/4 inch) of bare wire to attach to the terminals.



Loudspeaker Settings



70V				
1.2W	2.3W	4.5W	9W*	16Ω
2.3W	4.5W	9W	NC**	
100V				

* Factory default

** NC: No Connection (do not use)

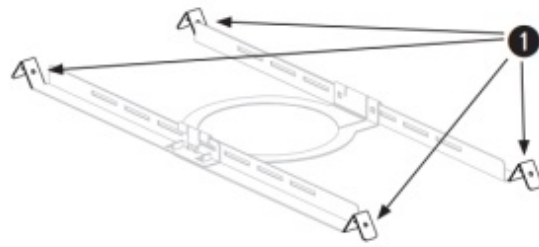
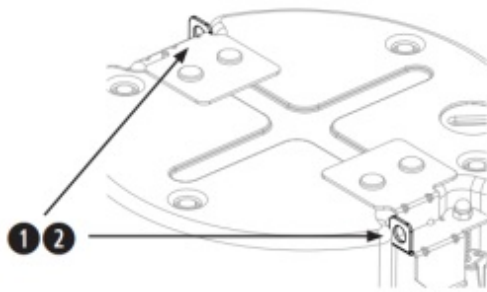
Transformer Tap Setting

Set tap by turning. Use a flat head screwdriver.

Preparing the Installation

Using a Safety Cable

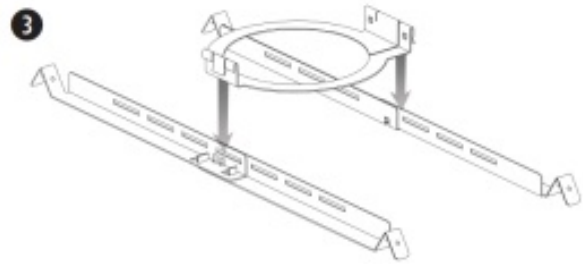
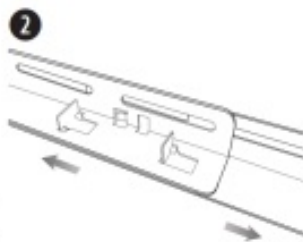
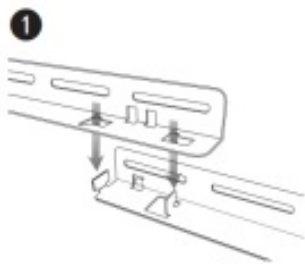
Some regional construction codes require the use of a secondary method of securing loudspeakers to support structures to provide additional safety. Choose a mounting position, method, and hardware consistent with local building codes and regulations. Bose Professional recommends using (1) a safety wire or (2) a safety cable as a secondary securing mechanism. See the diagrams below for safety attachment points. Follow the manufacturer's instructions for any secondary securing mechanism implemented.



Assembling the Tile Bridge

Note: If you are installing in a hard ceiling, assemble the tile bridge after inserting the rails and ring through the hole cutout (see page 7).

1. Align the rails and insert the tabs into the slots.
2. Pull the rails outward to secure them together.
3. Align the rails parallel to each other and press the tile bridge ring down to secure the ring to the rails.



Note: Installation in close proximity to cooking surfaces where the loudspeaker may be directly exposed to cooking oils, such as in commercial cooking environments, may decrease the performance or functionality of the loudspeaker.

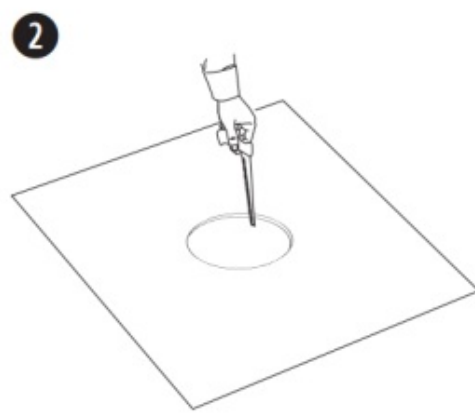
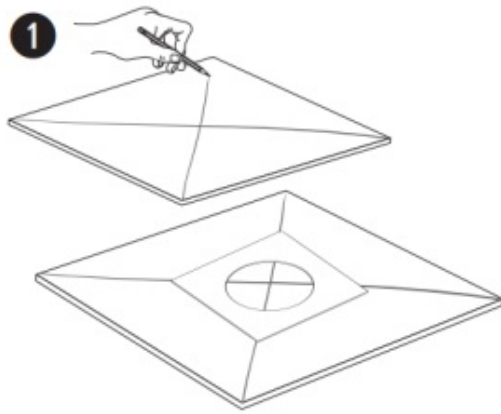
Preparing Acoustic Ceiling Tile

Cutting the Ceiling Tile

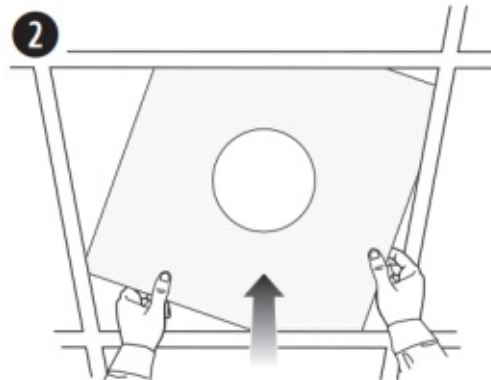
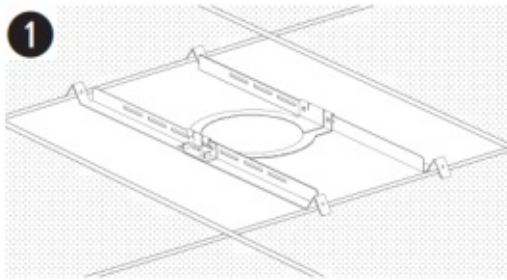
1. Remove the tile and use the template to trace a loudspeaker hole onto the tile. To center the template on the tile, draw an X by connecting the corners diagonally and center the template using the crossing point.
2. Cut a hole into the tile.

Installing the Tile Bridge

1. Place the assembled tile bridge across the ceiling grid. If necessary, adjust the tile bridge so the rails rest on the ceiling grid.



2. Replace the tile in the ceiling.

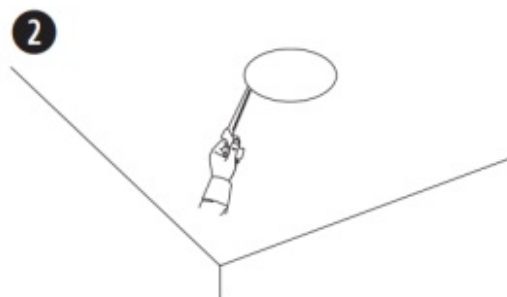
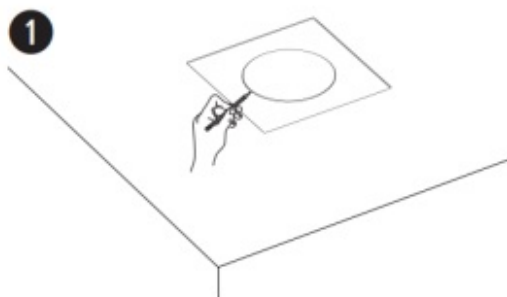


Installation

Preparing Hard Ceiling (Existing Construction)

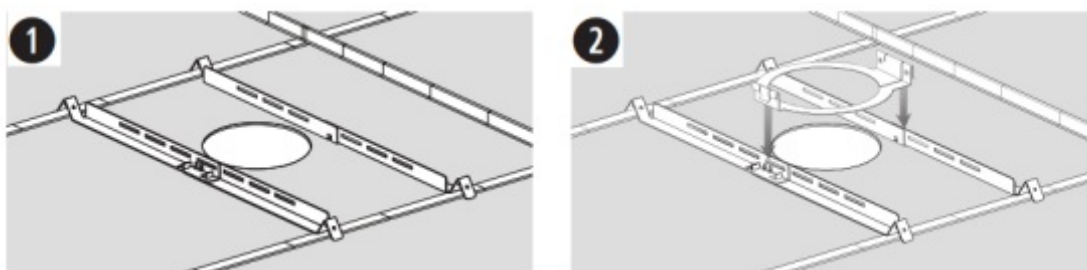
Cutting the Ceiling

1. Use the template to trace a hole onto the ceiling.
2. Cut a hole into the ceiling.



Installing the Tile Bridge

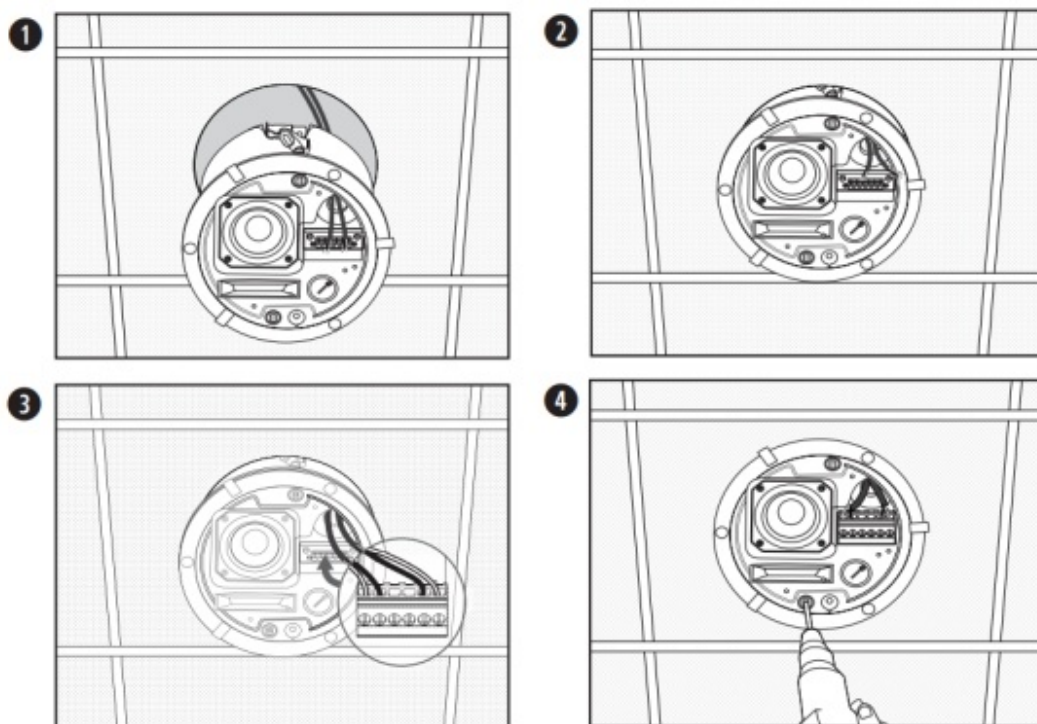
1. Insert the tile bridge rails and ring through the hole and place the rails parallel to each other across the ceiling grid or ceiling furring.
2. Assemble the tile bridge.



Mounting the Loudspeaker

1. Pass the audio wire through the wire opening.
2. Insert the loudspeaker through the hole and into the tile bridge. Make sure the anchors engage on the tile bridge before loosening your grip on the loudspeaker.
3. Remove the connector, wire the connector, and reinsert the connector into the loudspeaker. For wiring information, see *Wiring the Loudspeaker* on page 5.
4. Tighten the anchor arm screws to secure the loudspeaker. If using a power drill, set to a low torque setting.

⚠ WARNING: Over-tightening the screws may result in damage to the anchor attachment point or the ceiling, which could lead to a falling hazard.

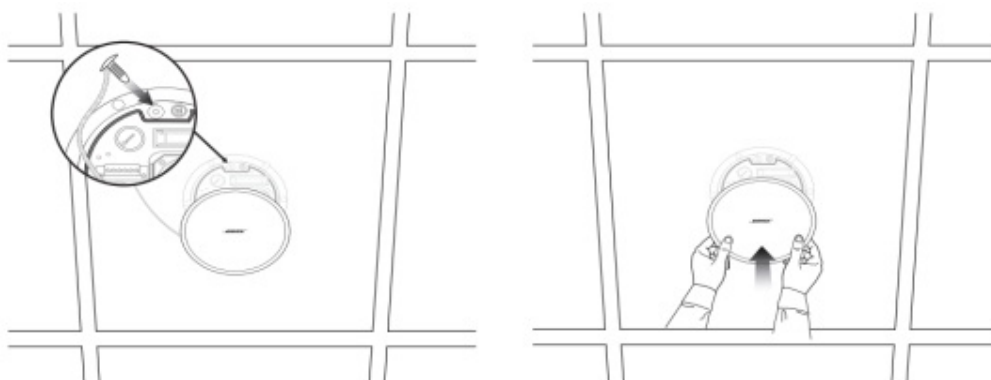


Installing in Hard Ceiling Using a Rough-in Pan (New Construction)

For information on installing a rough-in pan, see the DesignMax Rough-in Pan installation guide at BoseProfessional.com. Once the rough-in pan is installed, see *Mounting the Loudspeaker* on page 7.

Attaching the Grille

Insert the safety lanyard pin into the hole in the loudspeaker. Using both hands, position the grille against the loudspeaker. The grille secures to the loudspeaker magnetically.



Safety and Regulatory Compliance

The DesignMax DM2C-LP loudspeaker has passed testing and complies with the following specifications and uses:

Listed to ANSI/UL 1480A-2016, Speakers for Commercial & Safety Professional Use
General-Purpose Use – UL Category UEAY, File Number S36835

UL-2043, 2013, Fire Test and Visible Smoke Release for Discrete Products and their Accessories Installed in Air Handling Spaces. Suitable for use in air handling (plenum) spaces.

Suitable for installation using Class 1, Class 2, Class 3 wiring methods in accordance with NFPA 70, National Electrical Code, 2017, Article 640

NFPA 70, National Electrical Code, 2017, Article 300-22(c)

NFPA 90-A, 2015, Installation of Air Conditioning and Ventilation Systems, Paragraph 4.3.11.2.6.5 The DesignMax DM2C-LP loudspeaker has been designed to the requirements defined in the following European regulatory specification for combination systems:

Tested to IEC60268-5, 2007



©2024 Transom Post OpCo LLC. All rights reserved.

Framingham, MA 01701 USA

BoseProfessional.com


AM813563 Rev. 05

April 2024



813563-0040

Documents / Resources

	BOSE DM2C-LP Design Max In Ceiling Loudspeaker [pdf] Installation Guide DM2C-LP Design Max In Ceiling Loudspeaker, DM2C-LP, Design Max In Ceiling Loudspeaker, In Ceiling Loudspeaker, Ceiling Loudspeaker
---	---

References

- [User Manual](#)

📁 Bose

🔍 Bose, Ceiling Loudspeaker, Design Max In Ceiling Loudspeaker, DM2C-LP, DM2C-LP Design Max In Ceiling Loudspeaker, In-Ceiling Loudspeaker

—Previous Post

[BOSE 442318 QuietComfort Earbuds Owner's Manual](#)

Next Post—

[BOSE MA12 Panaray Modular Line Array Loudspeaker Installation Guide](#)

Leave a comment

Your email address will not be published. Required fields are marked *

Comment *

Name

Email

Website

☐ Save my name, email, and website in this browser for the next time I comment.

Post Comment

Search:

e.g. whirlpool wrf535swhz

Search

[Manuals+](#) | [Upload](#) | [Deep Search](#) | [Privacy Policy](#) | [@manuals.plus](#) | [YouTube](#)

This website is an independent publication and is neither affiliated with nor endorsed by any of the trademark owners. The "Bluetooth®" word mark and logos are registered trademarks owned by Bluetooth SIG, Inc. The "Wi-Fi®" word mark and logos are registered trademarks owned by the Wi-Fi Alliance. Any use of these marks on this website does not imply any affiliation with or endorsement.