



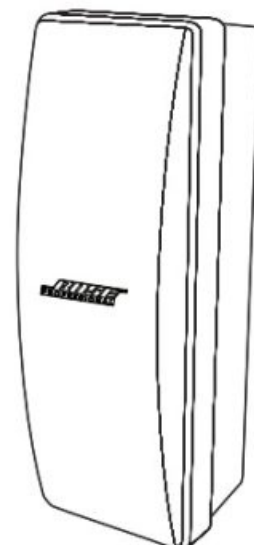
BOSE 402 Series V, 802 Series V Full Range Driver Array Loudspeakers Installation Guide

[Home](#) » [Bose](#) » BOSE 402 Series V, 802 Series V Full Range Driver Array Loudspeakers Installation Guide 



Full-Range-Driver
Array Loudspeakers

402® Series V



802® Series V



Contents

1 Important Safety

Instructions

2 Overview

3 Installation

4 Documents / Resources

4.1 References

Important Safety Instructions

Please read and keep all safety and use instructions.

This product is intended for installation by professional installers only! This document is intended to provide professional installers with basic installation and safety guidelines for this product in typical fixed-installation systems. Please read this document and all safety warnings before attempting installation.

Do not attempt to service this product yourself. Refer all servicing to authorized service centers, installers, technicians, dealers or distributors. To contact Bose Professional or to find a dealer or distributor near you, visit BoseProfessional.com.

1. Read these instructions.
2. Keep these instructions.
3. Heed all warnings.
4. Follow all instructions.
5. Do not block any ventilation openings. Install in accordance with the manufacturer's instructions.
6. Do not install near any heat sources such as radiators, heat registers, stoves, or other apparatus (including amplifiers) that produces heat.
7. Only use attachments/accessories specified by the manufacturer.

WARNINGS/CAUTIONS



This product contains magnetic material. Consult your physician on whether this might affect your implantable medical device.

- It is the responsibility of the installer to use a support system which has sufficient wind load strength to comply with the applicable codes and standards.
- All Bose Professional products must be installed in accordance with local, state, federal and industry regulations. It is the installer's responsibility to ensure installation of the loudspeakers and mounting system is performed in accordance with all applicable codes, including local building codes and regulations. Consult the local authority having jurisdiction before installing this product.
- This product is not intended for installation or use in indoor water facility areas (including, without limitation, indoor pools, indoor water parks, hot tub rooms, saunas, steam rooms and indoor skating rinks).
- Unsafe mounting or overhead suspension of any heavy load can result in serious injury or death, and property damage. It is the installer's responsibility to evaluate the reliability of any mounting method used for their application. Only professional installers with the knowledge of proper hardware and safe mounting techniques should attempt to install any loudspeaker overhead.
- Do not mount on surfaces that are not sturdy, or that have hazards concealed behind them, such as electrical

wiring or plumbing. If you are not sure about installing the bracket, contact a qualified professional installer. Ensure the bracket is installed according to local building codes.

- Use only the hardware and accessories included or specified by Bose Professional for use with 802 and 402 loudspeakers. Hardware for securing the loudspeaker to the mounting surface is not supplied. For information on compatible accessories, see the product's technical data sheet at [BoseProfessional.com](https://www.boseprofessional.com).
- Keep the product away from fire and heat sources. Do not place naked flame sources, such as lighted candles, on or near the product.
- Do not make unauthorized alterations to this product.
- Do not expose loudspeaker or mounting components to any chemical substances that are not specified by Bose Professional, including but not limited to lubricants, cleaning agents, contact sprays, or other hydrocarbon-based solvents. Exposure to such substances can lead to degradation of the plastic material, resulting in cracking and creating a falling hazard.
- Clean speakers using only a dry cloth. Do not expose loudspeaker to soap, detergent, mineral oil, alcohol or other cleaning agents or chemicals.

Regulatory Information




This product conforms to all applicable EU directive requirements. The complete declaration of conformity can be found at the product-specific page: [BoseProfessional.com](https://www.boseprofessional.com).



This symbol means the product must not be discarded as household waste, and should be delivered to an appropriate collection facility for recycling. Proper disposal and recycling helps protect natural resources, human health and the environment. For more information on disposal and recycling of this product, contact your local municipality, disposal service, or the shop where you bought this product.

China Restriction of Hazardous Substances Table

Names and Contents of Toxic or Hazardous Substances or Elements						
	Toxic or Hazardous Substances and Elements					
Part Name	Lead (Pb)	Mercury (Hg)	Cadmium (Cd)	Hexavalent (CR(VI))	Polybrominated B iphenyl (PBB)	Polybrominated d iphenylether (PBDE)
PCBs	X	O	O	O	O	O
Metal Parts	X	O	O	O	O	O
Plastic Parts	O	O	O	O	O	O
Speakers	X	O	O	O	O	O
Cables	X	O	O	O	O	O
This table is prepared in accordance with the provisions of SJ/T 11364. O: Indicates that this toxic or hazardous substance contained in all of the homogeneous materials for this part is below the limit requirement of GB/T 26572.						
X: Indicates that this toxic or hazardous substance contained in at least one of the homogeneous materials used for this part is above the limit requirement of GB/T 26572.						

Taiwan Restriction of Hazardous Substances Table

Equipment name: 402, 802 Series V, Type designation: 893554, 893555						
	Restricted substances and its chemical symbols					
Unit	Lead (Pb)	Mercury (Hg)	Cadmium (Cd)	Hexavalent chromium (Cr+6)	Polybrominated biphenyls (PBB)	Polybrominated diphenyl ethers (PBDE)
PCBs	—	○	○	○	○	○
Metal Parts	—	○	○	○	○	○
Plastic Parts	○	○	○	○	○	○
Speakers	—	○	○	○	○	○
Cables	—	○	○	○	○	○
Note 1: “○” indicates that the percentage content of the restricted substance does not exceed the percentage of reference value of presence. Note 2: The “—” indicates that the restricted substance corresponds to the exemption.						

Date of Manufacture: The eighth and ninth digits in the serial number indicate the year of manufacture; “24” is 2024.

EU Importer: Transom Post Netherlands B.V., Keizersgracht 391A, 1016 EJ, Amsterdam
 | UK Importer: Transom Post Netherlands UK, Squires House 205a High Street, West Wickham, BR4 0PH | Japan Importer: Transom Post International Japan KK Co., Ltd. PMO Tamachi IV Shiba5-29-19, Minato-ku, Tokyo | Australia Importer: Transom Post Australia Pty. Ltd., Level 14, 60 Margaret Street, Sydney, NSW 2000 | China Importer: Transom Post (Shanghai) Audio Co. Ltd Room 2209, Building 1, 175 Longyao Road, Xuhui District, Shanghai | Mexico Importer: POST INTL MEXICO, S. DE R.L. DE C.V. Insurgentes Sur No. 1079, 1st floor, Colonia Noche Buena, Benito Juárez, C.P. 03270, Mexico City | UAE Importer: 102 A, Sama Tower Sheikh Zayed Road, Dubai UAE

Bose is a trademark of Bose Corporation.
 802 and 402 are trademarks of Transom Post OpCo LLC.
 Bose Professional, 117 South St, Hopkinton, MA 01748 USA
 ©2024 Transom Post OpCo LLC. No part of this work may be reproduced, modified, distributed or otherwise used without prior written permission.

Warranty Information
 This product is covered by a limited warranty.
 For warranty details, visit BoseProfessional.com/Warranty.

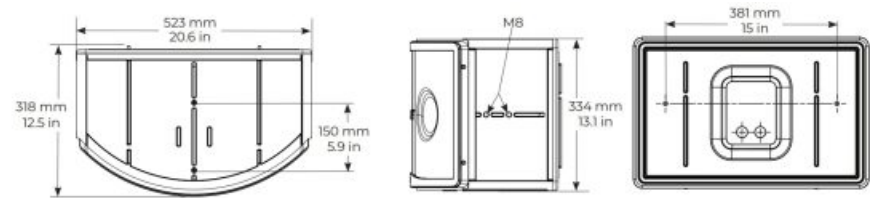
Overview

Package Contents

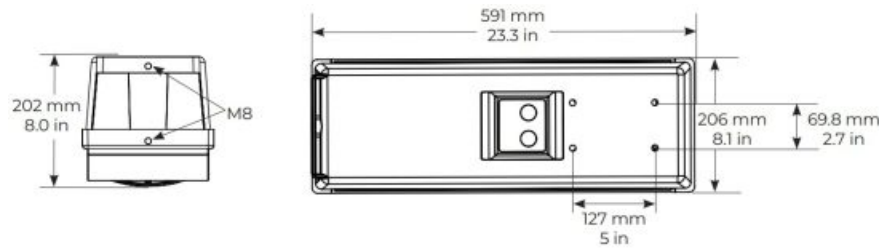


Product Dimensions

802 Series V:



402 Series V:



Installation

Technical Specifications

For additional specifications, see the Array Loudspeakers technical data sheet at [BoseProfessional.com](https://www.bose.com/na/professional/technical-specifications).

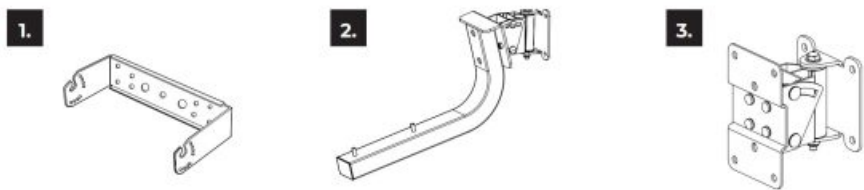
Physical				
Net Weight		802: 16.7 kg (36.8 lbs) 402: 6.9 kg (15.2 lbs)		
Shipping Weight		802: 19.3 kg (42.5 lbs) 402: 8.4 kg (18.5 lbs)		
Connectors		NL4 Wiring:		
		1+	1-	2+/THRU
		1+ FR+	FR-	2-/THRU
		Not Connected		

Important Safety Information

⚠ Before installing the loudspeaker, review Important Safety Instructions on page 2.

⚠ Suitable for use outdoors in wet locations
IP55 per IEC 60529:2013+COR.1:2019

Installation Options



Installation Options and Accessories

802:

1. 802 U-bracket
2. WBP-8 Pan and Tilt Bracket
- 402:
3. Surface-Mount Pan and Tilt Bracket

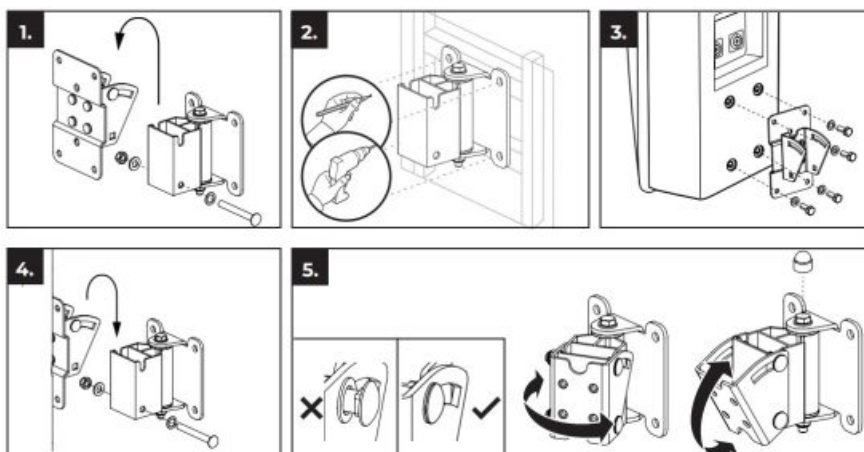
Installing the 402 Series V loudspeaker with the Surface-Mount Pan and Tilt Bracket

Note: Choose appropriate fasteners to support the weight of the loudspeaker (see your loudspeaker installation guide for product weight). At least two of the wall bracket's attachment points must be secured to a support structure.

Attachment points not secured to a support structure must be secured using appropriate hardware for the installation.

Choose fasteners that are consistent with all local building codes and requirements.

1. Remove the bracket pin to detach the angle bracket from the wall bracket.
2. Mark and drill four holes into the wall. Secure the bracket to the wall using four screws (use M8 or 5/16-inch sized screws).
3. Using the included T3 square drive, remove the plastic inserts on the rear panel of the loudspeaker and attach the bracket to loudspeaker using only the included M8 × 20 mm screws.
4. Reattach the angle bracket to the wall bracket and secure it with the bracket pin.
5. Adjust the pan and tilt of the loudspeaker by loosening the appropriate bolts. The carriage bolt must be flush to the angle slot to tighten. Attach the plastic bolt caps if desired.



Recommended power amplifiers

Selecting the proper amplifier size for a given loudspeaker requires analysis of the transducer long-term (or RMS) power rating, dynamic range of the input-source material (crest factor), desired sound pressure levels, and other factors. As a general guideline, the following table provides recommended power amplifier ranges for Bose Professional loudspeakers:

Model	Nominal Impedance	Required Channels	Amp Power Rating
802 Series V	8 ohms	1	250 – 500 Watts
402 Series V			125 – 250 Watts



CAUTION: Failure to follow these guidelines may result in damage to the loudspeaker!



894703-0020

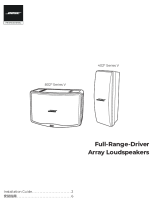
©2024 Transom Post OpCo LLC. All rights reserved.

BoseProfessional.com

AM894703 Rev. 01

November 2024

Documents / Resources

	<p>BOSE 402 Series V, 802 Series V Full Range Driver Array Loudspeakers [pdf] Installation Guide</p> <p>402 Series V, 802 Series V, 402 Series V 802 Series V Full Range Driver Array Loudspeakers, 402 Series V 802 Series V, Full Range Driver Array Loudspeakers, Range Driver Array Loudspeakers, Driver Array Loudspeakers, Array Loudspeakers, Loudspeakers</p>
---	---

References

-  [Bose Professional: Pro Audio Equipment & Sound Systems](#)
- [User Manual](#)

Manuals+, Privacy Policy

This website is an independent publication and is neither affiliated with nor endorsed by any of the trademark owners. The "Bluetooth®" word mark and logos are registered trademarks owned by Bluetooth SIG, Inc. The "Wi-Fi®" word mark and logos are registered trademarks owned by the Wi-Fi Alliance. Any use of these marks on this website does not imply any affiliation with or endorsement.