

 **BOSCH**
**Smart Home
Controller II
Plug integrates
more devices**



BOSCH Smart Home Controller II Plug integrates more devices User Manual

[Home](#) » [Bosch](#) » BOSCH Smart Home Controller II Plug integrates more devices User Manual 

Contents

- 1 [BOSCH Smart Home Controller II Plug integrates more devices](#)
- 2 [Product Information](#)
- 3 [Safety instructions](#)
- 4 [Product Overview](#)
- 5 [Mounting instructions](#)
- 6 [Resetting to factory settings](#)
- 7 [Open source software](#)
- 8 [Technical data](#)
- 9 [Documents / Resources](#)
 - 9.1 [References](#)



BOSCH Smart Home Controller II Plug integrates more devices

**Specifications:**

- **Device:** Bosch Smart Home System
- **Matter System:** 1

Product Information

The Bosch Smart Home Plug is designed to work in combination with the Bosch Smart Home Controller II. It offers various functions including switching on/off, monitoring energy consumption levels in Watt-hours (Wh) and Watts (W), scheduling both manually and automatically, providing a weekly overview, selecting profiles (standard, lamp, heater), enabling repeater functionality, maintaining status after power cuts, setting up automations/scenarios, and integrating with services such as alarmsystems and motion lights.

Usage Instructions:**Setup:**

1. Ensure the Bosch Smart Home Plug is within range of the Bosch Smart Home Controller II.
2. Plug the Bosch Smart Home Plug into a power outlet.
3. Follow the pairing instructions provided in the user manual to connect the Plug to the Controller II.

Basic Functions:

- To switch on/off the connected device, use the corresponding function on the Bosch Smart Home Controller II or the app.
- Monitor energy consumption levels by checking the displayed Wh and W values.

Scheduling:

You can set manual or automatic schedules for the Plug via the Bosch Smart Home app. Define when to turn the Plug on or off based on your preferences.

Profiles:

Select a profile (standard, lamp, heater) to optimize the Plug's settings for different types of devices connected to it.

Repeater Functionality:

If needed, you can enable the repeater function on the Plug to extend the range of your Bosch Smart Home network.

Status and Automations:

Check the status of the Plug after power cuts and configure automations or scenarios for seamless integration with other devices and services in your smart home setup.

FAQ:**Q: Can I use the Bosch Smart Home Plug with devices from other brands?**

A: The Bosch Smart Home Plug is optimized for use within the Bosch Smart Home System and may not be compatible with devices from other brands.

Q: How do I reset the Plug to its factory settings?

A: To reset the Plug, press and hold the reset button for 10 seconds until the LED indicator flashes rapidly. Then follow the pairing instructions to reconnect it to the Controller II.

Product description

As the heart of the system, the Smart Home controller II protects your private data and controls communication between the app and all devices.

Description of the symbols**Warning!**

Note about hazards

**Note:**

Additional important information



Note about the installation video

Safety instructions

- Read this user manual completely before installing or commissioning the device and pay particular attention to the hazard information.
- Keep the user manual in a safe place throughout the entire service life of the device.
- Fire hazard due to electrical current! There is a risk of fire when the electrical connection is not used properly. Only use the product with the specified, approved power supply unit.
- The device may only be connected to an easily accessible power socket. The plug must be removed in the event of a hazard.
- The device is not a toy! Do not allow children to play with it. Never leave the packaging material lying around

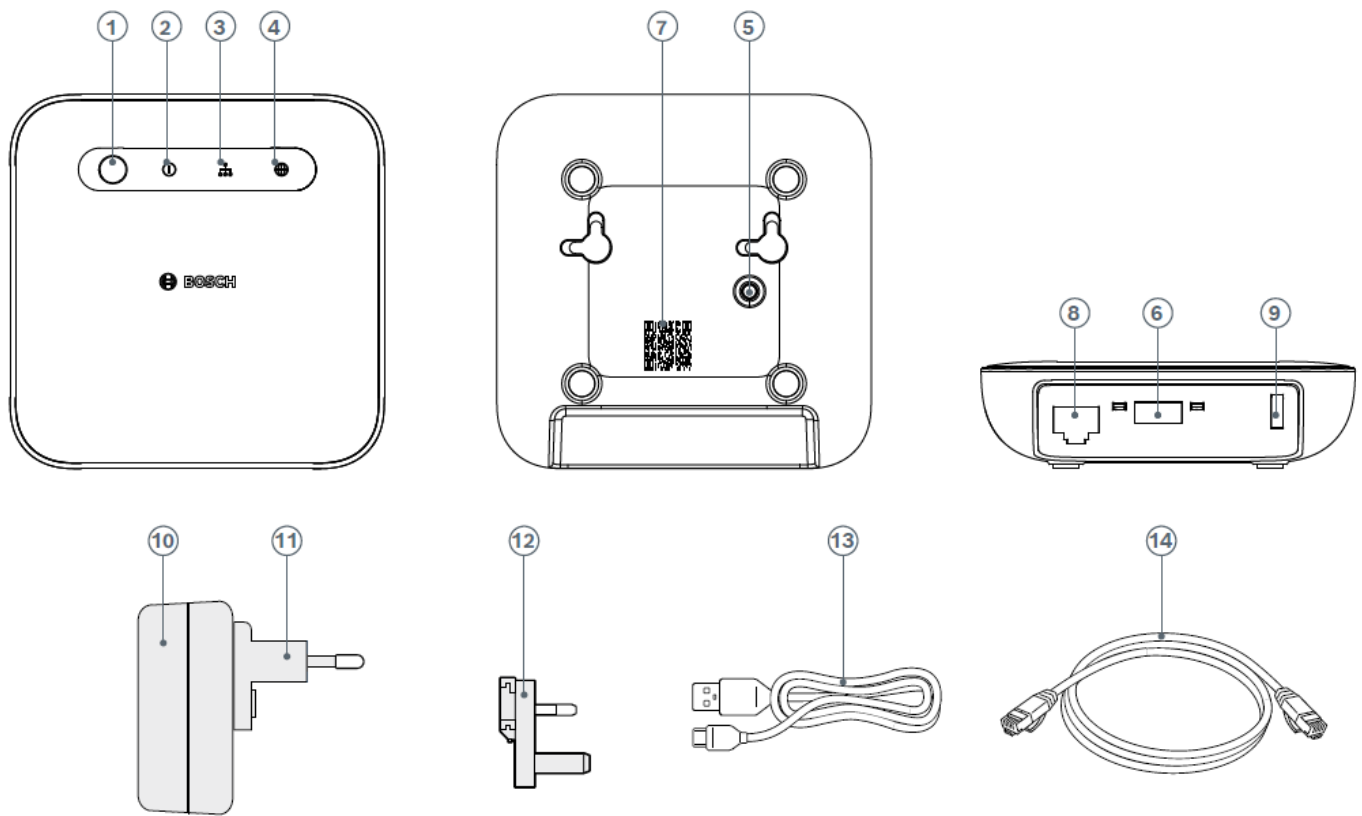
unattended. Plastic film and small parts may pose a danger to children.

- This device may be used by children from 8 years of age and by persons with reduced physical, sensory or mental capacities, or a lack of experience and knowledge provided these persons are supervised or have been instructed in the safe use of the device, and understand the corresponding risks.
- When remotely or automatically controlling a device, it is not always possible to guarantee that commands are actually executed or that the correct device status is displayed in the app and on other Smart Home display devices because of external circumstances. This may lead to material damage and/or personal injury. Therefore, you must ensure to the greatest extent possible that no person is endangered at the time of remote operation or automated control. Please take special care when setting up or adjusting the remote control or when using the automated control and check the desired functionality at regular intervals.
- For safety and approval reasons (CE/UKCA), the device may not be modified and/or no changes may be made to the device without authorisation.
- We accept no liability for material damage or personal injury which is caused by improper use or by not observing the safety instructions. In these cases, any guarantee claim becomes void! We accept no liability for consequential damage.
- Do not use the device if it has damage visible from the outside, for example, to the housing, control elements or connection sockets, or if it has a malfunction. If in doubt, please contact our service team.
- Do not open up the device. It does not contain any parts to be maintained by the user. If a fault occurs, have the device checked by a specialist.
- Only operate the device indoors and do not expose it to moisture, vibrations, constant sunlight or other sources of heat, extreme cold temperatures and mechanical stress.
- Only use the device together with original components and recommended products from Bosch partners.

Notes

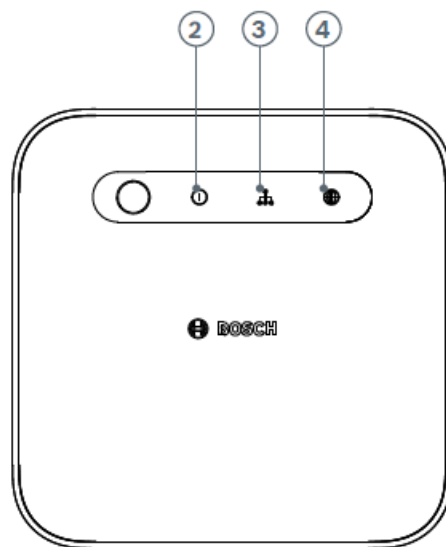
- The range within buildings can deviate greatly from the range in open spaces. In addition to the transmitting power and the receiving properties of the receiver, environmental factors such as humidity, as well as the local structural situation, play an important role.
- The device is only intended for use in residential environments.
- The device is only intended for private use.

Product Overview



Item	Name
1	Function key
2	Power LED
3	Network LED
4	Cloud LED
5	Reset button
6	USB connection
7	QR code
8	Network connection (RJ45)
9	Supply voltage connection (USB-C)
10	Power supply unit (USB-A output, 5 V _{DC} , 2 A max.)
11	EU adapter
12	UK adapter
13	Power cable, 1.5 m (USB-A to USB-C)
14	Power cable (RJ45)

The status LEDs (2, 3, 4) show the status of the controller using flashing codes.



Power LED	Status	Recommended action
Flashes yellow	Device starting up	Wait until the device has fully started up.
Lights green	The device has started up	None
Flashes red	Start-up failed	Disconnect the Smart Home controller from the power and reconnect it. If the LED flashes red again, then check the internet connection; connect the controller to another network if possible.
Network LED	Status	Recommended action
Flashes yellow	Searching for a network connection	None
Lights green	Network connection established	None
Flashes red	Network connection failed	Check your network settings.
Cloud LED	Status	Recommended action
Flashes yellow	Update is being downloaded from the Bosch Cloud or data is being exchanged via the tunnel connection.	None
Lights green	Remote access via the Bosch Cloud is activated and established.	If you do not want to access your Smart Home system while out and about, then you can deactivate remote access in the Smart Home app.
Flashes red	Bosch Cloud connection failed and remote access to your Bosch Smart Home system is not currently possible.	Disconnect the Smart Home controller from the power and reconnect it. If the LED flashes red again, then check the internet connection.

Mounting instructions

- The standards and directives applicable in your country must be observed during planning, set-up, operation and maintenance.
- The controller can be used in a horizontal position or mounted on the wall.
- When selecting the mounting location and when drilling, pay attention to the areas where electrical wires run, or

to any supply cables.

- Please also note any additional information on the product.
- Always lay the cables of connected devices in such a way that they cannot pose a hazard to people or pets.

Please also note any additional information on the product.

- For electronic devices (Smart Home hubs, routers, power supply units, etc.), radio interference may occur under some circumstances if the distance between the devices is less than one metre. If this occurs, please select a larger distance between the devices.
- Screws and plugs are not included in the box contents. Phillips head screws or cylinder head screws with a head diameter of max. 8 mm and a head height of max. 4 mm are recommended.

Start-up

Insert the network cable into the controller network connection (9) and a free LAN port on your Wi-Fi router. Now insert the cable for the power supply unit supplied into the controller supply connection (10). Then plug the power supply unit into a free socket. The status LEDs (2, 3, 4) show the status of initialisation after starting through flashing codes (see product overview).

- When you connect the controller to the internet for the first time, it automatically searches for software updates. If an update is required, it is automatically downloaded and installed by the controller. This process can take more than 30 minutes. The controller cannot be started during this time. Please do not disconnect the controller from the power connection for the duration of the process.
- The Smart Home controller II requires IPv4 in the local network. This is usually the standard configuration for your router.

Download the “Bosch Smart Home” app from your app store. You will need this for installation, configuration and operation.



- To configure the controller, your mobile device must be on the same network.

Start the Bosch Smart Home app and follow the instructions.

The Bosch Smart Home system can be used by other mobile devices. To do this, first install the Bosch Smart Home app on the additional mobile device and follow the instructions in the app.

You can also use the explanatory videos and additional information on our website as an additional aid for mounting, installing, starting up and restoring the factory settings on your Bosch Smart Home controller:
<https://www.bosch-smarthome.com/rom/controller-2>

Resetting to factory settings

You have two options for resetting the Smart Home controller to the factory settings:

1. Reset via Bosch Smart Home app

Go to “More” then “System” in the app and select “Factory settings”. Follow the instructions.

2. Reset via the reset button

Press the reset button (5) until the status LEDs (2, 3, 4) on the front flash red, release it briefly and press and hold it again until the LEDs light up yellow. The device then restarts. Please note that it can take a few minutes until the controller is ready for operation again.

1. When resetting the Smart Home controller to the factory settings (using the app or the reset button), only the Smart Home controller is reset. All Smart Home devices that were previously integrated should be manually reset after resetting the controller.

Maintenance and cleaning

The device does not require maintenance. Leave any repairs to a specialist. Clean the device with a soft, clean, dry and lint-free cloth. When cleaning, do not use any cleaning agents containing solvents.

Simplified declaration of conformity

Robert Bosch Smart Home GmbH hereby declare that the radio equipment type Bosch Smart Home BSHC-2 corresponds with Directive 2014/53/EU. The complete text of the EU declaration of conformity is available via the following web address:


<https://eu-doc.bosch.com>

Robert Bosch Smart Home GmbH hereby declares that the radio system type BSHC-2 complies with Regulation 2017. The full text of the declaration of conformity is available at the following internet address: <https://gb-doc.bosch.com>

<https://gb-doc.bosch.com>

Environmental protection and disposal



This symbol  means that this product must be disposed of separately from general household waste. As an end user, you are obligated to dispose of the product via separated waste collection, for instance by passing it to an official collection point, in line with the relevant national regulations.

By collecting waste separately, you are making a valuable contribution to protecting the environment and human health. This is because, by treating old equipment properly, on one hand, the potentially negative effects associated with the presence of hazardous substances are prevented and, on the other hand, raw materials are conserved through their recovery.

Please also note that the avoidance of waste is an even more valuable contribution to environmental protection. Wherever possible, as well as finding a further use for the device yourself or having it repaired, passing the device to a second user is also an ecologically valuable alternative to disposal.

It is also possible to return these to the place you bought the product from, provided the distributor offers a returns service voluntarily or is legally obligated to do so.

Please note that you alone are responsible for the erasure of all data on the device, in particular confidential and personal data.

Open source software

This Bosch Smart Home product uses open-source software. You can obtain the license information in two ways:

1. Directly via the Smart Home controller: Do this by inserting any empty USB stick into the USB port on the back of the device. The license information along with further product information will automatically be saved on the stick.
2. Online at
→ <https://www.bosch-smarthome.com/rom/open-source-software>

Communication between iPhone, iPad, Apple Watch, HomePod, HomePod mini, or Mac and the HomeKit-enabled Smart home controller is secured by HomeKit technology.

Technical data

Device type designation	BSHC-2
Protection type	IP20
Ambient temperature	+0 °C to +40 °C
Max. humidity	85 % (non-condensing)
Housing dimensions (W × H × D)	100 × 100 × 29 mm
Weight	110 g
Supply voltage	5 V _{DC}
Max. power consumption	2 A
Typical power consumption	0.4 A
Radio protocol	ZigBee 3.0
Radio frequency band	2.4 – 2.4835 GHz
Max. transmitting power	10 dBm
Radio range in the open	< 100 m
Software class	A
Receiver category	2
Network connection	RJ45; port speed 10/100 Mbit/s

Technical modifications reserved

Spare parts/accessories

For information on available spare parts or accessories, please visit: <https://www.bosch-smarthome.com/rom/spareparts>

Service information

70565 Stuttgart-Vaihingen Germany
service@bosch-smarthome.com

www.bosch-smarthome.com/service

Documents / Resources



[BOSCH Smart Home Controller II Plug integrates more devices](#) [pdf] User Manual
Smart Home Controller II Plug integrates more devices, Smart Home Controller II, Plug integrat
es more devices, integrates more devices, more devices, devices

References

- [User Manual](#)

[Manuals+](#), [Privacy Policy](#)

This website is an independent publication and is neither affiliated with nor endorsed by any of the trademark owners. The "Bluetooth®" word mark and logos are registered trademarks owned by Bluetooth SIG, Inc. The "Wi-Fi®" word mark and logos are registered trademarks owned by the Wi-Fi Alliance. Any use of these marks on this website does not imply any affiliation with or endorsement.