



BOSCH MUMS2ER01 MUM Serie 2 Food Processor User Manual

[Home](#) » [Bosch](#) » BOSCH MUMS2ER01 MUM Serie 2 Food Processor User Manual 

Contents

- 1 [BOSCH MUMS2ER01 MUM Serie 2 Food Processor](#)
- 2 [Safety](#)
- 3 [Avoiding material](#)
- 4 [Unpacking and checking](#)
- 5 [Before using it for the first time](#)
- 6 [Requirements](#)
- 7 [Cleaning and servicing](#)
- 8 [Special accessories](#)
- 9 [Troubleshooting](#)
- 10 [Warranty conditions](#)
- 11 [WHAT INBOX](#)
- 12 [USE](#)
- 13 [Documents / Resources](#)
 - 13.1 [References](#)
- 14 [Related Posts](#)



BOSCH MUMS2ER01 MUM Serie 2 Food Processor



Safety

Please read the safety information to ensure that you use the appliance safely.

General information

- You can find general information for this instruction manual here. [Read this instruction manual carefully.](#) Only this will ensure you use the appliance safely and efficiently.
- Please note the additional instructions when using supplied or optionally available accessories.
- This manual is intended for the user of the appliance.
- Follow the safety instructions and warnings.
- Keep the instruction manual and the product information safe for future reference or for the next owner.
- Check the appliance after unpacking it. Do not connect the appliance if it has been damaged in transit.

Intended use

- Please read the information on intended use to ensure that you use the appliance correctly and safely.
- Only use this appliance:
 - As specified in this instruction manual.
 - With genuine parts and accessories.
- For additional applications described in the instructions for accessories that are optional or come with the appliance.

- For mixing, kneading, and beating food.
- Under supervision.
- In private households and in enclosed spaces in a domestic environment at room temperature.
- for normal processing quantities and for normal processing times for domestic use.
- Up to an altitude of max. 2000 m above sea level.
- disconnect the appliance from the power supply when:
 - are not using the appliance.
 - the appliance is unattended.
 - assembling the appliance.
 - taking the appliance apart.
 - cleaning the appliance.
 - approaching rotating parts.
- Change tools.
- confronted with a fault.

Restriction on user group

Avoid risks to children and vulnerable persons. This appliance can be used by persons with reduced physical, sensory or mental capabilities or a lack of experience and/or knowledge if they have been given supervision or instruction concerning the use of the appliance in a safe way and if they understand the hazards involved. Children must not play with the appliance. Cleaning and user maintenance must not be performed by children. The appliance must not be used by children. Keep children away from the appliance and power cable.

Safety instructions

Observe the safety instructions.

- Never operate a damaged appliance.
- Never operate an appliance with a cracked or fractured surface.
- Never pull on the power cord to unplug the appliance. Always unplug the appliance at the mains.
- If the appliance or the power cord is damaged, immediately unplug the power cord or switch off the fuse in the fuse box.
- "Call Customer Service." → Page 38
- Repairs to the appliance should only be carried out by trained specialist staff.
- Improper installation is dangerous.
- Connect and operate the appliance only in accordance with the specifications on the rating plate.
- Incorrect repairs are dangerous.
- Repairs to the appliance should only be carried out by trained specialist staff.
- Only use genuine spare parts when repairing the appliance.
- If the power cord of this appliance is damaged, it must be replaced by the manufacturer, the manufacturer's Customer Service or a similarly qualified person in order to prevent any risk.
- Ingress of moisture can cause an electric shock.
- Never immerse the appliance or the power cord in water or clean in the dishwasher.
- Only use the appliance in enclosed spaces.
- Never expose the appliance to intense heat or humidity.
- Do not use steam- or high-pressure cleaners to clean the appliance.
- If the insulation of the power cord is damaged, this is dangerous.
- Never let the power cord come into contact with hot appliance parts or heat sources.

- Never let the power cord come into contact with sharp points or edges.
- Never kink, crush or modify the power cord.
- Keep hands, hair, clothing, and utensils away from rotating parts.
- Only attach and remove tools and accessories once the drive has stopped and you have unplugged the appliance.
- Before changing tools or cleaning the appliance, switch off and disconnect it from the mains.
- Only use the tools when the bowl is inserted, the lid is fitted and the drive covers are in place.
- Switch on the appliance only if all preparations are complete and the swivel arm is engaged in the position described.
- Never open the swivel arm during processing.
- Never leave the appliance switched on if the power supply is interrupted. The appliance will automatically start up again following the interruption in the power supply.

Avoiding material

- Improper use may cause material damage.
 - Never use different drives at the same time.
 - Never operate the appliance longer than necessary.
 - Do not operate the appliance at no-load.
 - Never use genuine parts and accessories for other appliances.
 - Observe the maximum processing quantities.
 - Do not use the bowl to store objects which do not belong to it.
 - During operation warm exhaust air escapes from the vent grille at the rear. If this is blocked, it may cause the appliance to overheat.
 - Set up the appliance at a sufficient distance from walls, easily damaged surfaces and other appliances.
- Environmental protection and saving energy Help protect the environment by using your appliance in a way that conserves resources and by disposing of reusable materials properly.

Disposing of packaging

The packaging materials are environmentally compatible and can be recycled.

- Sort the individual components by type and dispose of them separately. Information about current disposal methods are available from your specialist dealer or local authority. Unpacking and checking Find out here what you need to note when unpacking the appliance. Unpacking the appliance and parts
- Take the appliance out of the packaging.
- Take all other parts and the accompanying documents out of the packaging and place them to hand.
- Remove any packaging material.
- Remove any stickers or film.

Contents of package

After unpacking all parts, check for any damage in transit and the completeness of the delivery. Note: The appliance comes with additional accessories depending on its features. See the instructions for the accessories to discover the further contents of the package.

Unpacking and checking

Find out here what you need to note when unpacking the appliance.

Unpacking the appliance and parts

1. Take the appliance out of the packaging.
2. Take all other parts and the accompanying documents out of the packaging and place them to hand.
3. Remove any packaging material.
4. Remove any stickers or film.

Contents of package

After unpacking all parts, check for any damage in transit and the completeness of the delivery. Note: The appliance comes with additional accessories depending on its features. See the instructions for the accessories to discover the further contents of the package.

Setting up appliance

WARNING

Risk of fire! Intense heat may cause the appliance and tools to catch fire.

- Never place the appliance on or near hot surfaces.

ATTENTION!

During operation warm exhaust air escapes from the vent grille at the rear. If this is blocked, it may cause the appliance to overheat.

- Set up the appliance at a sufficient distance from walls, easily damaged surfaces, and other appliances.
 - Place the appliance on a stable, level, clean and flat work surface.
 - Pull the power cable out to the required length. → “Cable length”, Page 33 Do not insert the mains plug.

Drives

Your appliance is equipped with different drives, which are specially designed for its tools and accessories. Note: Drives 2 and 3 come with protective covers.

Overview of drives

You can find an overview of the drives and their purposes here

Tools

You can find out everything you need to know about the different tools here.

Overview of tools

Use the appropriate tool depending on use.

Parked position

Your appliance is equipped with a manual parked position. Note: The swivel arm will only open or close with the inserted tool when the drive is located in the correct parked position. Moving the drive to the parked position Requirement: The rotary switch is set to . Set the rotary switch to hold. The drive slowly moves until the correct parked position is reached. Note: If the drive does not move, the correct parked position has already been reached.

Before using it for the first time

Before using for the first time prepare the appliance for use. Preparing the appliance

1. Press the release button and raise the swivel arm until it engages.
 1. “Moving the swivel arm”,

2. Lift and remove the bowl.
 1. "Removing bowl",
3. Clean all parts that come into contact with food before using for the first time.
 1. "Cleaning and servicing",
4. Put the cleaned and dried parts out ready for use.

Basic operation

You can find out everything you need to know about operating your appliance here.

Cable length

- Adjust the length of the power cable to your needs. Adjusting cable length via cable storage compartment
- Pull the power cable out to the required length.
- To shorten the cable, push it into the cable storage compartment.
- **Moving the swivel arm**
- Press the release button and raise the swivel arm until it engages. a The swivel arm is fixed in position 2.
- Press the release button and move the swivel arm down until it engages in the vertical position. The swivel arm is fixed in position 3. Inserting bowl
- Place the bowl in the base unit.

The bowl must be positioned straight and firm on the base unit. Removing bowl

- Lift and remove the bowl.

Inserting tools

Requirement: The drive is in the parked position.

- "Moving the drive to the parked position",
- Select the tool required.
- **"Overview of tools",**
- Press the tool into the main drive until it engages.
- To insert the kneading hook:

Insert the kneading hook with the protective cap fitted in the main drive.

- Turn the protective cap until the kneading hook engages fully.
- The protective cap must cover the main drive completely.

Processing

You can find out everything you need to know about processing food here. Recommended speeds Observe the recommended speeds for optimum results.

Setting Use

1. Stir in and mix ingredients.
2. Knead heavy dough, e.g. yeast dough.
3. Beat and stir ingredients, e.g. whipped cream. Processing ingredients with tools

WARNING

Risk of injury! Rotating drives, tools or accessory parts may cause injury.

4. Keep hands, hair, clothing and utensils away from rotating parts.
5. Only attach and remove tools and accessories once the drive has stopped and you have unplugged the appliance.
6. Before changing tools or cleaning the appliance, switch off and disconnect it from the mains.

7. Only use the tools when the bowl is inserted, the lid is fitted and the drive covers are in place.
8. Switch on the appliance only if all preparations are complete and the swivel arm is engaged in the position described.
9. Never open the swivel arm during processing.
10. Never leave the appliance switched on if the power supply is interrupted. The appliance will automatically start up again following the interruption in the power supply.

Requirements

- The bowl has been inserted.
- The required tool is inserted.
- Add the ingredients to the bowl.
- Press the release button and push the swivel arm down until it engages.
- Insert the mains plug.
- Set the rotary switch to the required speed.
- Process the ingredients until you achieve the required result.
- Set the rotary switch to .

Wait until the appliance stops. Cleaning and servicing

- Set the rotary switch to hold.
- The drive slowly moves until the correct parked position is reached.
- Unplug the mains plug.
- You can change the speed at any time during processing or interrupt processing.
- Clean all parts immediately after use so that residues do not dry.

Adding more ingredients

To add ingredients during processing, use the filling shaft in the lid.

- To add large quantities, set the rotary switch to . Wait until the appliance stops.
- Set the rotary switch to hold.
- The drive slowly moves until the correct parked position is reached.
- Remove the bowl lid.
- **“Removing bowl lid”**
- Add the ingredients to the bowl.
- Attach the bowl lid.
- **“Attaching bowl lid”**
- Process the ingredients until you achieve the required result.

Cleaning and servicing

To keep your appliance working efficiently for a long time, it is important to clean and maintain it carefully.

Cleaning products

Find out here which cleaning products are suitable for your appliance.

ATTENTION!

Using unsuitable cleaning agents or incorrect cleaning may damage the appliance.

- Do not use cleaning agents containing alcohol or spirits.
- Do not use sharp, pointed or metal objects.
- Do not use abrasive cloths or cleaning agents.

Overview of cleaning

You can find an overview of how to best clean the appliance and the other parts here.

Tip: When processing food such as carrots, plastic parts may become discoloured. Remove discolouration with a soft cloth and a few drops of cooking oil.

Special accessories

You can buy accessories from the after-sales service, from specialist retailers or online. Only use genuine accessories as these have been specifically designed for your appliance. "Accessories vary from one appliance to another. When purchasing accessories, always quote the exact product number (E no.) of your appliance." You can find out which accessories are available for your appliance in our catalog, in the online shop or from our after-sales service. www.bosch-home.com Application examples Observe the comments and figures in the table. Tip: You can find more application examples and recipes for your appliance online. www.bosch-home.com

Sample recipe

Recipe	Ingredients	Processing
Heavy fruit cake	<ul style="list-style-type: none"> ■ 3 eggs ■ 135 g sugar ■ 135 g margarine ■ 255 g flour ■ 10 g baking powder ■ 150 g currants ■ 150 g mixed dried fruit <p>Note: Process max. 2 times the quantity at the same time.</p>	<ul style="list-style-type: none"> ■ Insert stirring whisk. ■ Add all ingredients except the dried fruit. ■ Process for 30 seconds at setting 1. ■ Then process for 3-5 minutes at setting 3. ■ Select setting 1. ■ Add the dried fruit within the next 30-60 seconds.

Troubleshooting

You can rectify minor faults on your appliance yourself. Read the troubleshooting information before contacting after-sales service. This will avoid unnecessary costs. Risk of electric shock! Incorrect repairs are dangerous.

- Repairs to the appliance should only be carried out by trained specialist staff.
- Only use genuine spare parts when repairing the appliance.
- If the power cord of this appliance is damaged, it must be replaced by the manufacturer, the manufacturer's Customer Service or a similarly qualified person in order to prevent any risk.

Malfunctions

Fault	Cause	troubleshooting
The appliance is not working.	The mains plug of the power cord is not plugged in.	▶ Connect the appliance to the power supply.
	The circuit breaker is faulty.	▶ Check the circuit breaker in the fuse box.
	There has been a power cut.	▶ Check whether the lighting in your kitchen or other appliances are working.
The swivel arm cannot be opened or closed because the tool is jammed in the bowl.	Drive is not in the parked position.	<ol style="list-style-type: none"> 1. Set the rotary switch to O off. 2. When the swivel arm is open, remove the tool and close the swivel arm. 3. Set the rotary switch to P and hold it in this position. <p>✓ The drive slowly moves until the correct parked position is reached.</p>

Disposal

Find out here how to dispose of old appliances correctly. Disposing of old appliances Valuable raw materials can be reused by recycling.

1. Unplug the appliance from the mains.
2. Cut through the power cord.
3. Dispose of the appliance in an environmentally friendly manner.

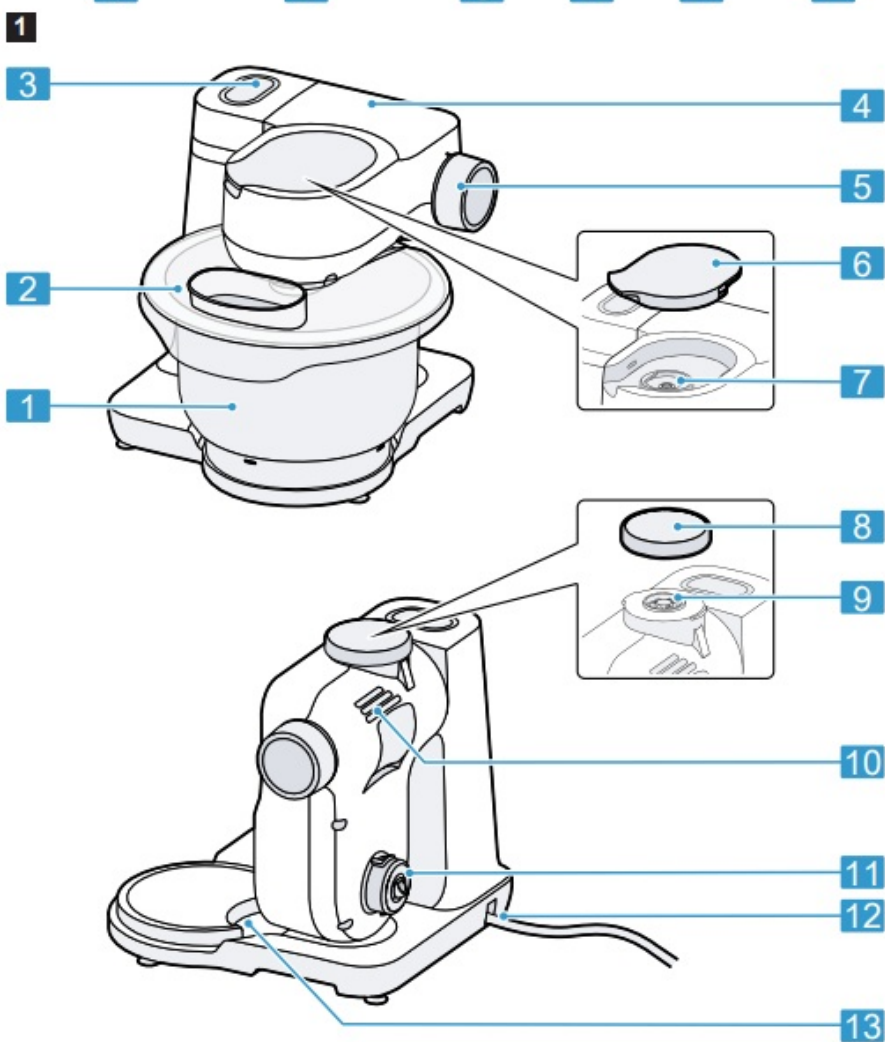
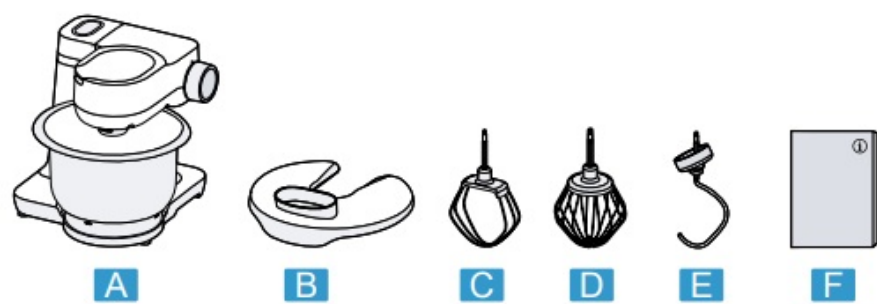
Customer Service

If you have any queries, are unable to rectify faults on the appliance yourself or if your appliance needs to be repaired, contact Customer Service. You can solve many problems yourself by consulting the information on troubleshooting in these instructions or on our website. If this is not the case, contact our after-sales service. We always find an appropriate solution. With any warranty claims, we will make sure that your appliance is repaired by trained after-sales technicians using genuine spare parts, including after the manufacturer's warranty has expired. Function-relevant genuine spare parts according to the corresponding Ecodesign Order can be obtained from Customer Service for a period of at least 7 years from the date on which your appliance was placed on the market within the European Economic Area. Note: Under the terms of the manufacturer's warranty the use of Customer Service is free of charge. Detailed information on the warranty period and terms of the warranty in your country is available from our aftersales service, your retailer or on our website. If you contact Customer Service, you will require the product number (ENQ) and the production number (FD) of your appliance. The contact details for Customer Service can be found in the Customer Service directory at the end of the manual or on our website.

Warranty conditions

You can make warranty claims for your appliance under the following conditions. The guarantee conditions for this appliance are as defined by our representative in the country in which it is sold. Details regarding these conditions can be obtained from the dealer from whom the appliance was purchased. The bill of sale or receipt must be produced when making any claim under the terms of this guarantee.

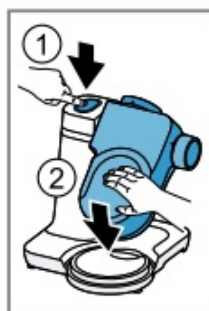
WHAT INBOX



USE



3



4



5



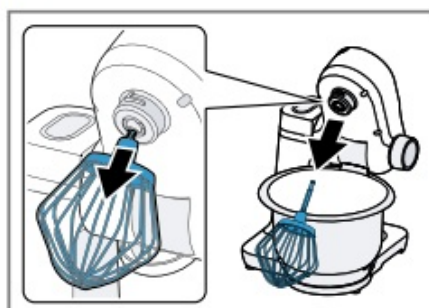
6



7



8

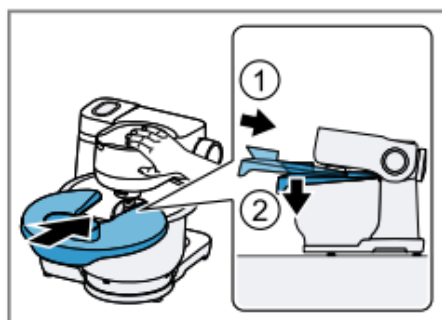


9



10

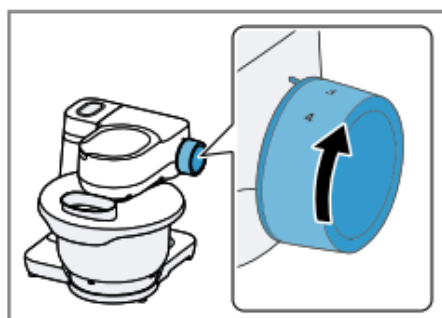




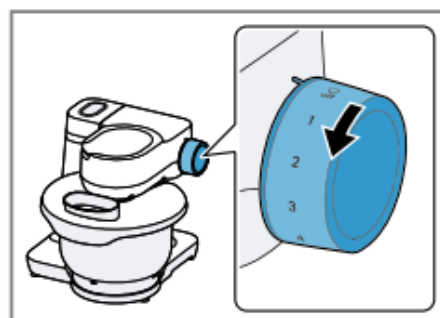
11



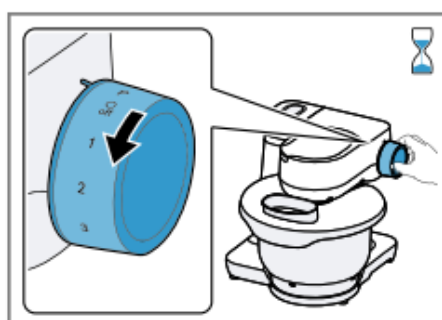
12



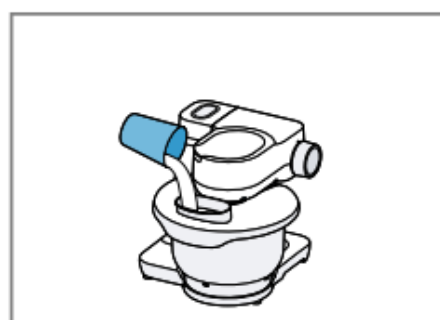
13



14



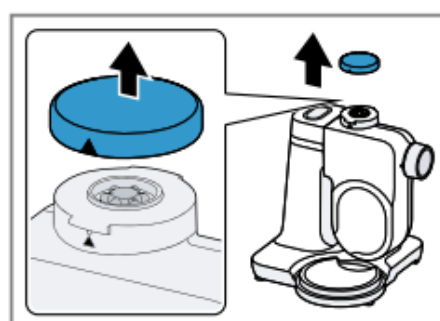
15



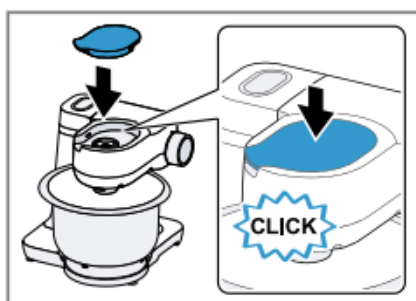
16



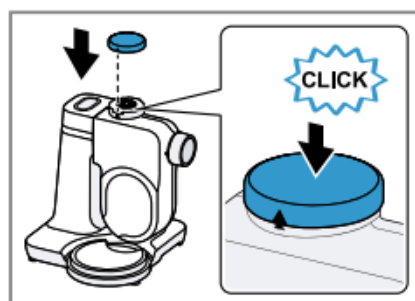
17



18






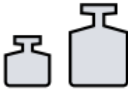












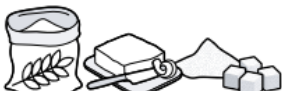


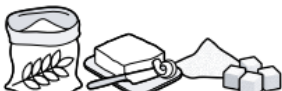


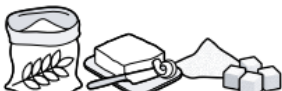





















19




20

	✓	✗	✗	✗	✗
	✓	✓	✓	✓	✓
	✓	✓	✓	✓	✓










21

			 MIN-MAX	1. ↓ 2.	 1-4	 00:00
			100-600 ml		4	1-6 min
			1-8 x 		4	4-6 min
			 550-2400 g	↓	1	30 s
			 350-550 g	↓	3	4-5 min
			 350-550 g	↓	1	30 s
			 350-550 g	↓	2	3-4 min
			 560-1100 g	↓	1	30 s
			 560-1100 g	↓	2	5-6 min
			 350-750 g	↓	1	30 s
			 350-750 g	↓	2	6-7 min
			 350-750 g	↓	1	30 s
			 350-750 g	↓	2	4-5 min

Documents / Resources

	<p>BOSCH MUMS2ER01 MUM Serie 2 Food Processor [pdf] User Manual</p> <p>MUMS2ER01, MUM Serie 2, Food Processor, MUM Serie 2 Food Processor, MUMS2ER01 MU M Serie 2 Food Processor</p>
-------------------------------------------------------------------------------------	------------------------------------------------------------------------------------------------------------------------------------------------------------------------------------------------------

References

-  [Home Appliances Global Website | Bosch](#)
-  [Home.co.uk: Property Search, Homes For Sale, Estate Agents, Sell Your House](#)
-  [Fairway Independent Mortgage Corporation](#)
-  [iCloud](#)
-  [Bosch Hausgeräte: Qualität, Zuverlässigkeit und Präzision | Bosch Österreich](#)
-  [Bosch Electromenager | qualité, fiabilité & précision](#)
-  [Erleben Sie beste Qualität | Bosch Hausgeräte](#)
-  [Bosch home appliances: experience quality, reliability and precision.](#)
-  [Home Appliances Global Website | Bosch](#)

-  [Bosch home appliances: experience quality, reliability and precision.](#)
-  [Bosch home appliances: experience quality, reliability and precision.](#)
-  [Elettrodomestici Bosch: scoprite qualità, affidabilità e precisione](#)
-  [BOSCH Service | Service worldwide](#)
-  [Welcome to MyBosch](#)
-  [Quality, Sustainable Home Appliances | Bosch](#)
-  [Bosch hvidevarer og husholdningsapparater - kvalitet til hverdag](#)
-  [Bosch-kodinkoneet: koe laatu, luotettavuus ja tarkkuus.](#)
-  [Bosch home appliances: experience quality, reliability and precision.](#)
-  [Huishoudapparaten met design en techniek van Bosch | Bosch](#)
-  [Bosch husholdningsapparater og hvitevarer -kvalitet i hver detalj](#)
-  [Bosch Home – kvalitet i var detalj](#)
-  [!\[\]\(7e7914364faa22e4d6649c877c7e723a_img.jpg\) Oxford House - Quality Appliances, Kitchens, Home Furniture & Offices](#)

Manuals+.