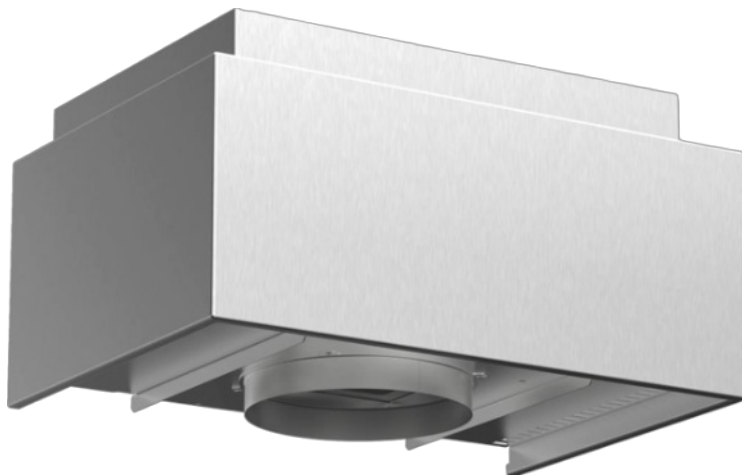


# BOSCH DSZ6240 Recirculation Module Installation Guide

[Home](#) » [Bosch](#) » BOSCH DSZ6240 Recirculation Module Installation Guide 

## BOSCH DSZ6240 Recirculation Module Installation Guide



### Contents

- [1 Safe installation](#)
- [2 General information](#)
- [3 Wall-mounting the air recirculation module](#)
- [4 Documents / Resources](#)
  - [4.1 References](#)
- [5 Related Posts](#)

### Safe installation

Observe the safety instructions when installing the optional accessory.



**WARNING – Risk of suffocation!**

Children may put packaging material over their heads or wrap themselves up in it and suffocate.

- Keep packaging material away from children.
- Do not let children play with packaging material.



**WARNING – Risk of electric shock!**

Sharp-edged components inside the appliance may damage the connecting cable.

- Do not kink or trap the connecting cable.



**WARNING – Risk of injury!**

Components inside the appliance may have sharp edges.

- Wear protective gloves.  
The odour filter remains hot for quite some time after it has been regenerated.
- Do not touch the odour filter straight after it has been regenerated – allow it to cool down.



**WARNING – Risk of fire!**

A non-regenerable odour filter may catch fire in the oven.

- Only regenerable odour filters that can be regenerated.

**ATTENTION!**

If a regenerable odour filter falls, it may become damaged. The damage is not always visible from the outside.

- Dispose of and replace any regenerable odour filters that have fallen.

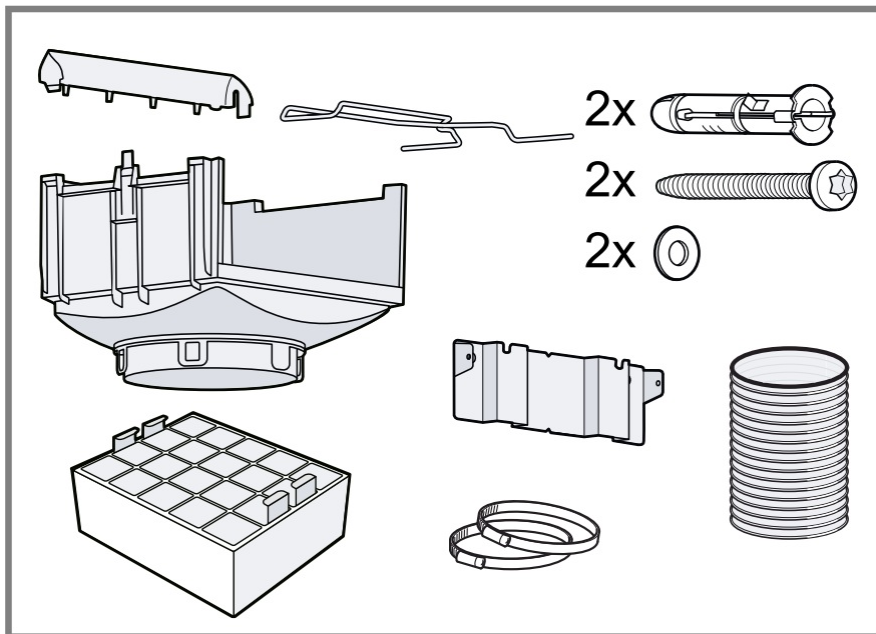


**General information**

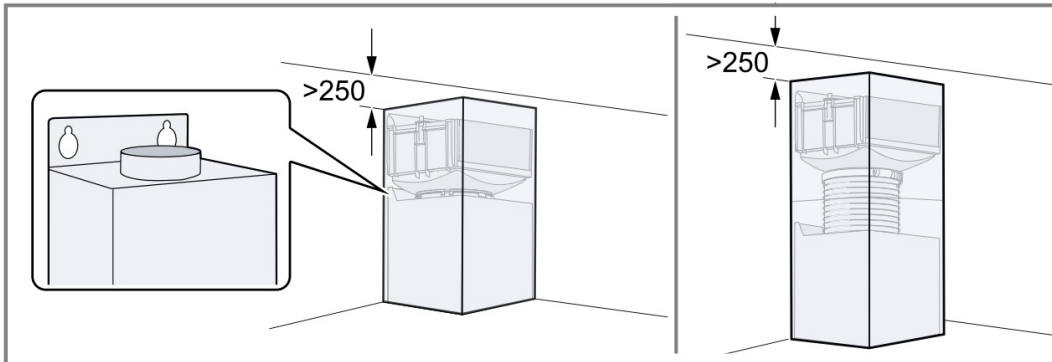
- Read this instruction manual carefully.
- Keep the instruction manual and the product information safe for future reference or for the next owner.
- The appliance can only be used safely if it is correctly installed according to the safety instructions. The installer is responsible for ensuring that the appliance works perfectly at its installation location.
- This instruction manual is intended for the installer of the optional accessory.
- Only a licensed expert may connect the appliance.
- Switch off the power supply before carrying out any work.

**Included with the appliance**

After unpacking all parts, check for any damage in transit and completeness of the delivery. → **Fig. 1**



The air recirculation module can be installed either on the extractor hood or to the wall. → **Fig. 2**

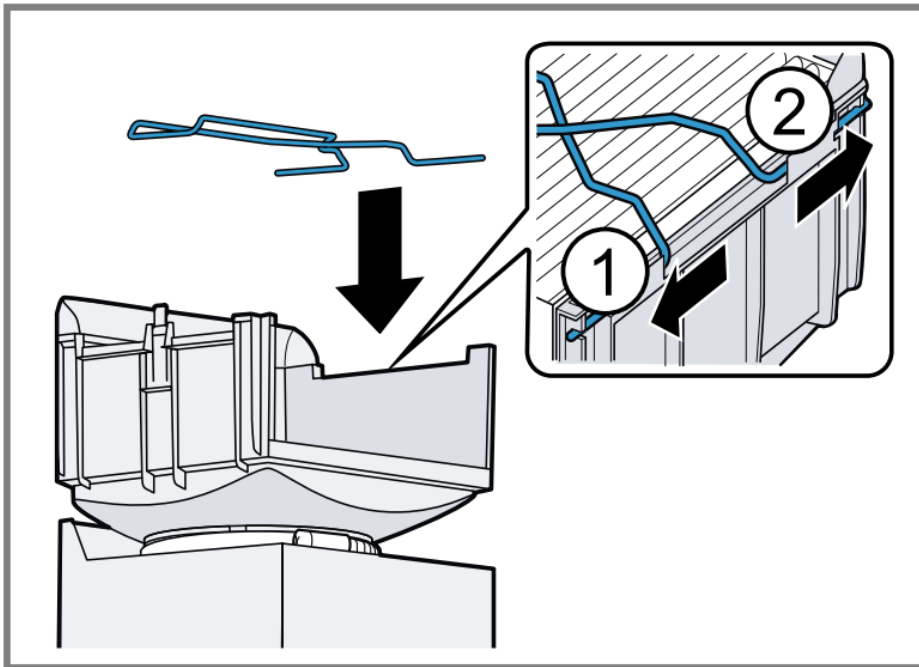


### Checking the wall

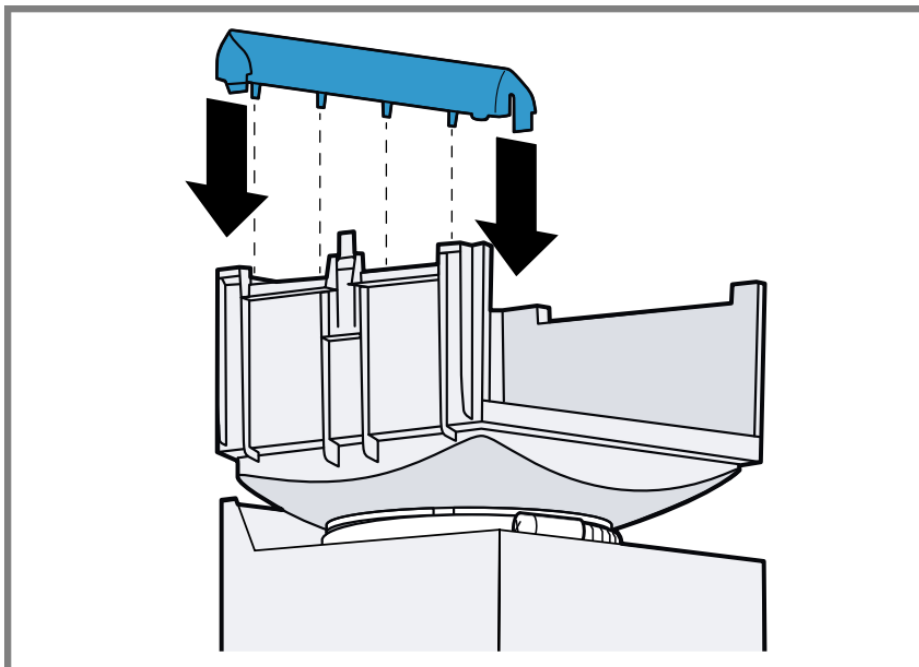
1. Ensure that there are no electrical wires, gas pipes or water pipes in the area where holes are to be drilled.
2. Check whether the wall is vertical and has sufficient load-bearing capacity.
3. Drill the hole depth in accordance with the length of the screws.  
The wall plugs must have a secure grip.
4. **Note:** The enclosed screws and wall plugs are suitable for use with solid brickwork. Use suitable fixing material for other structures, e.g. plasterboard, porous concrete, perforated bricks.  
Use the enclosed screws and wall plugs.

### Preparing the air recirculation module

1. To secure the wire clip to the air recirculation module, gently squeeze the wire clip together and slide it into the holes provided. → **Fig. 3**



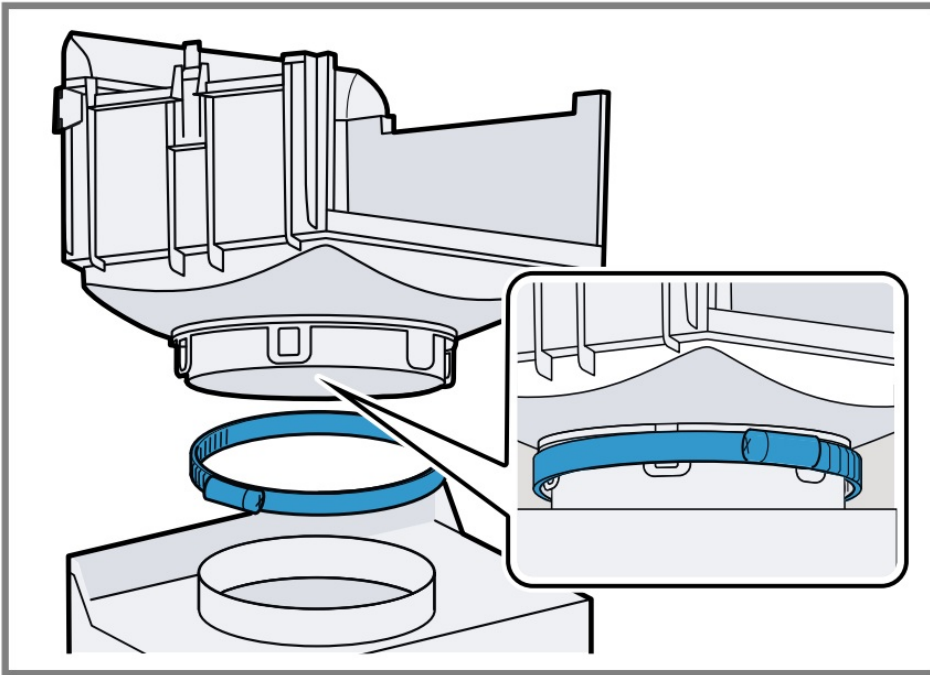
2. Secure the air conduction rail to the air recirculation module. → **Fig. 4**



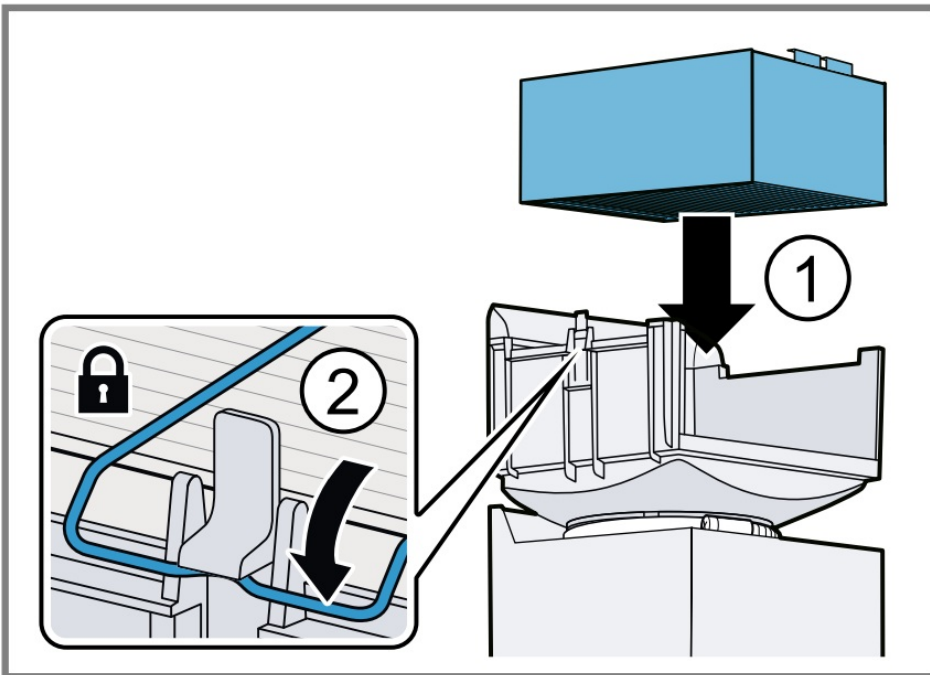
### Installing the air recirculation module on the fan box

**Note:** The position of the air recirculation module always depends on where the upper edge of the flue duct is.

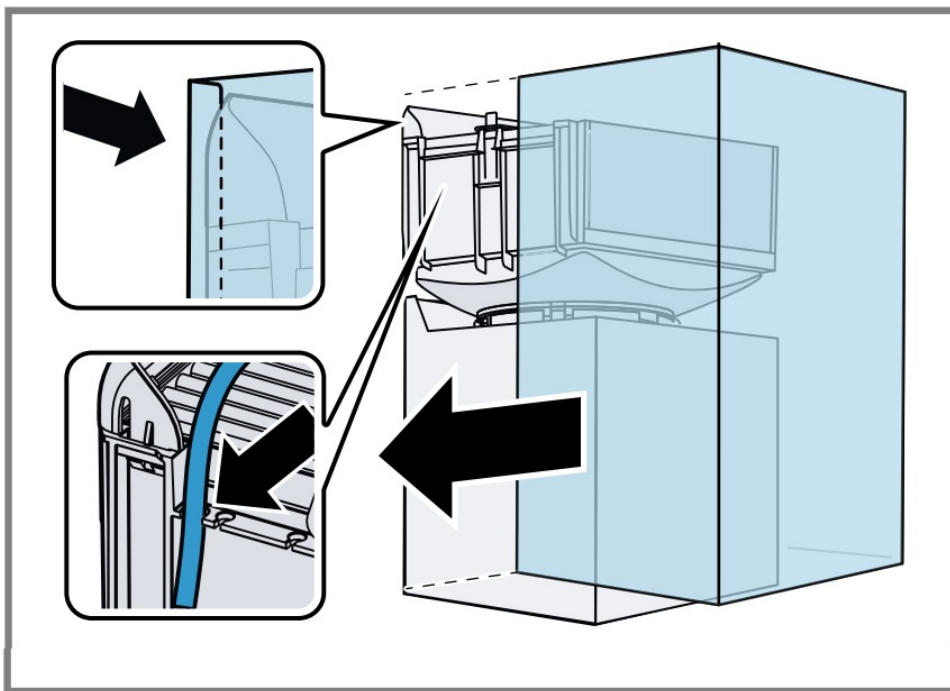
1. Secure the air recirculation module to the extractor hood. → **Fig. 5**



2. Insert the odour filter and click the wire clip into place. To do this, push the wire clip inwards slightly. Check that the wire clip is securely positioned. → **Fig. 6**



3. Guide the power cord through the designated opening.  
Do not bend the power cord.
4. Establish the power connection.
5. Place the outer flue duct on the appliance. Gently push the side panels of the flue duct apart, hook them in behind the air recirculation module and then push them back together. → **Fig. 7**



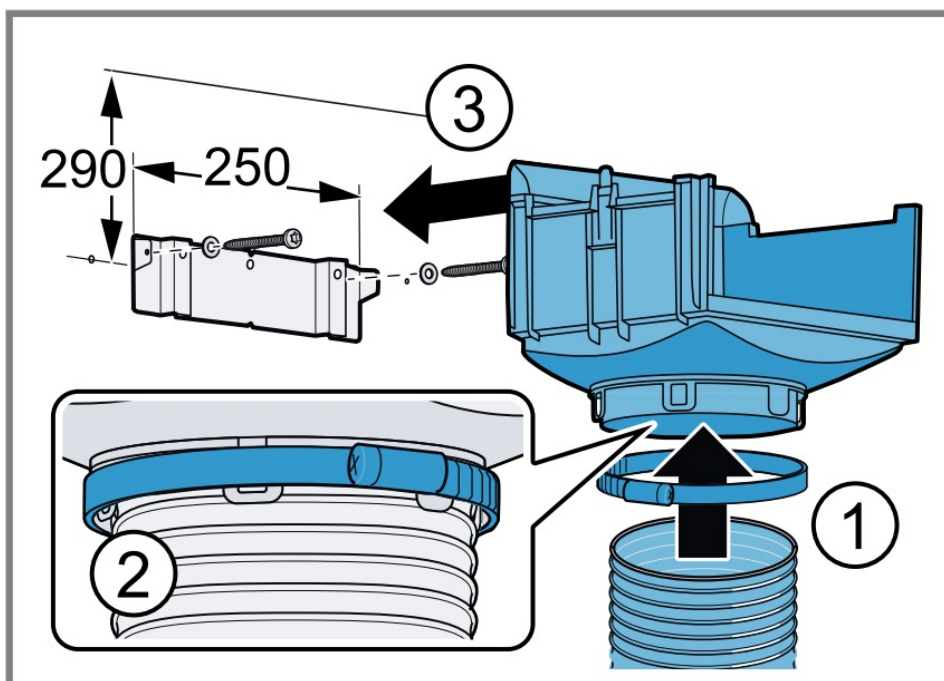
6. Use two screws to secure the outer flue duct section to the appliance from below.

### Wall-mounting the air recirculation module

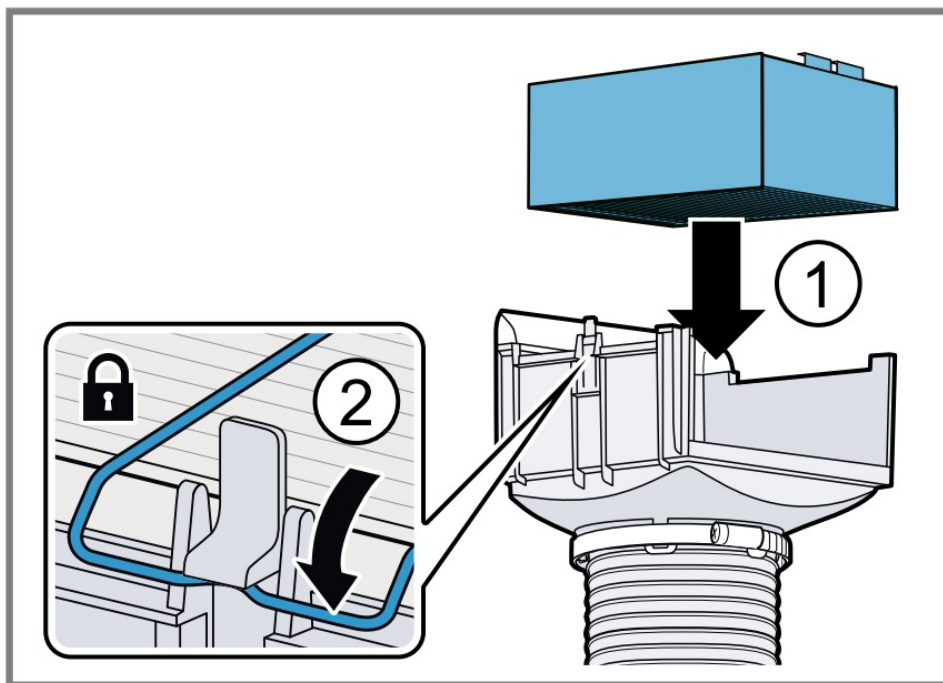
**Note:** The position of the air recirculation module always depends on where the upper edge of the flue duct is.

1. Wall-mount the air recirculation module.

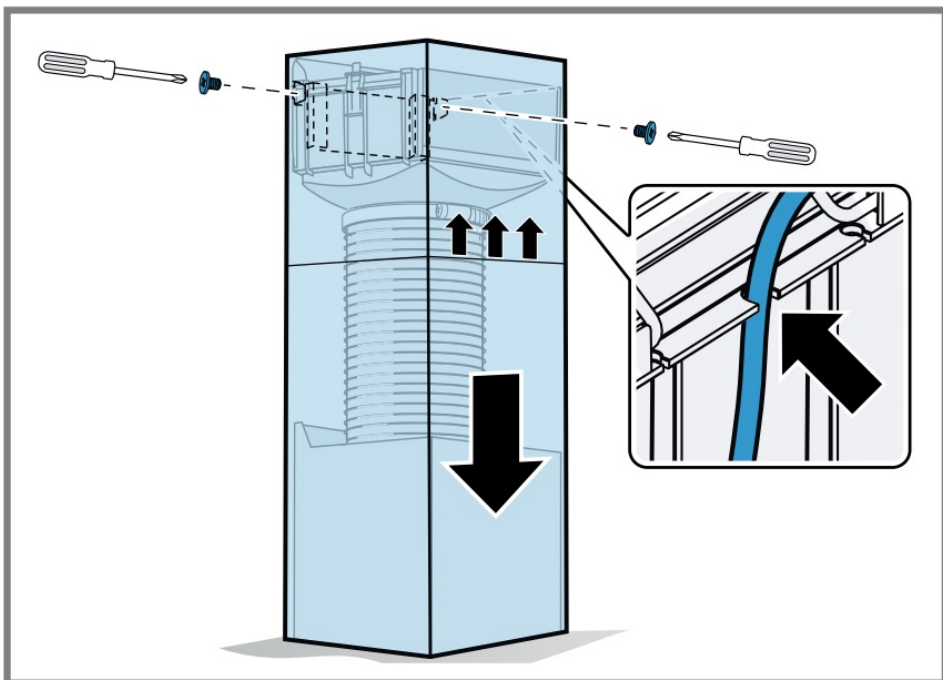
- Establish the ducting. **1,2**
- Measure and mark the position of the retaining bracket.
- Drill the holes with a diameter of 8 mm and a drilling depth of 60 mm.
- Press in the wall plugs flush with the wall.
- Screw in the retaining bracket to 5 mm, fit the air recirculation module in place and tighten the screws hand-tight. **3** → **Fig. 8**



2. Insert the odour filter and click the wire clip into place. To do this, push the wire clip inwards slightly. Check that the wire clip is securely positioned. → **Fig. 9**



3. Guide the power cord through the designated opening.  
Do not bend the power cord.
4. Establish the power connection.
5. Slide the two parts of the flue duct section into each other.
6. Place both sections of the flue duct on the appliance. Slide the inner flue duct section upwards, and attach it to the left- and right-hand sides of the retaining bracket. → **Fig. 10**



7. Screw the flue duct section to the sides of the retaining bracket.
8. Use two screws to secure the outer flue duct section to the appliance from below.

### Regenerable odour filter

Odour filters bind odorous substances in circulating air mode. Regularly replaced or regenerated odour filters guarantee a high level of odour removal.

With normal use (daily for approx. one hour), replace the odour filter at least every 10 years.

The regenerable odour filter can be regenerated in a standard oven.  
With normal use (approx. 1 hour a day), the regenerable odour filter must be replaced or regenerated every 3-4 months. The regenerable odour filter can be regenerated up to 30 times.

**Regenerating the odour filter**

 **WARNING – Risk of fire!**

The oven cleaning function (pyrolytic self-clean) may cause a regenerable odour filter to catch fire.

- Never regenerate a regenerable odour filter with the oven cleaning function (pyrolytic self-clean).

 **WARNING – Risk of injury!**

The odour filter remains hot for quite some time after it has been regenerated.


- Do not touch the odour filter straight after it has been regenerated – allow it to cool down.

**Note:** During the regeneration process, parts of the odour filter may become discoloured. This discolouration has no effect on the performance of the odour filter.

1. Loosen the wire clip and remove the odour filter.




2. Preheat the oven to a maximum of 200 °C (air recirculation ).
3. To ensure that you do not scratch the baking tray, place the odour filter on a wire rack.
4. During regeneration, an odour may develop. Open a window to ensure that the room is well ventilated.
5. Regenerate the regenerative odour filter with the following settings.

Duration	Temperature	Type of heating
120 mins	Max. 200 °C	Air re circulation 

6. Leave the hot odour filter to cool down on a heatresistant surface.
7. Insert the odour filter and secure the wire clip.

**Documents / Resources**

	<p><a href="#">BOSCH DSZ6240 Recirculation Module</a> [pdf] Installation Guide 9001723328, 040710, DSZ6240 Recirculation Module, DSZ6240, Recirculation Module, Module</p>
---	--

**References**

- [User Manual](#)



## **Manuals+. Privacy Policy**

This website is an independent publication and is neither affiliated with nor endorsed by any of the trademark owners. The "Bluetooth®" word mark and logos are registered trademarks owned by Bluetooth SIG, Inc. The "Wi-Fi®" word mark and logos are registered trademarks owned by the Wi-Fi Alliance. Any use of these marks on this website does not imply any affiliation with or endorsement.