

BOSCH CTL9181D0 Series 8 Fully Automatic Espresso Machine Instruction Manual

Contents

- [1 BOSCH CTL9181D0 Series 8 Fully Automatic Espresso Machine](#)
- [2 Product Information:](#)
- [3 Product Usage Instructions:](#)
- [4 Preventing material damage](#)
- [5 Installation and connection](#)
- [6 Documents / Resources](#)
 - [6.1 References](#)
- [7 Related Posts](#)

BOSCH CTL9181D0 Series 8 Fully Automatic Espresso Machine

Product Information:

- **Product Name:** Fully automatic espresso machine
- **Product Model:** Serie | 8 CTL9181D0
- **Languages:** [de] German, [en] English, [it] Italian, [fr] French, [nl] Dutch, [es] Spanish, [uk] Ukrainian, [tr] Turkish

Product Usage Instructions:

(Before first use):

1. Ensure safe installation and use only authorized adapters and power cords.
2. Follow the instructions for disposing of packaging materials.
3. Save energy by using energy-saving settings.

(Use):

1. Refer to the user manual for detailed instructions on using the product.
2. Activate or deactivate the child safety lock as needed.
3. Create your favorite settings from the classic or coffee world options.

(Safety):

1. Ensure safe installation and use only authorized adapters and power cords to avoid the risk of electric shock.

2. Avoid the risk of suffocation by keeping small parts away from children.
3. Avoid the risk of magnetism by following the instructions for wall mounting.

(Grinder):

1. Adjust the grind level according to your preference.

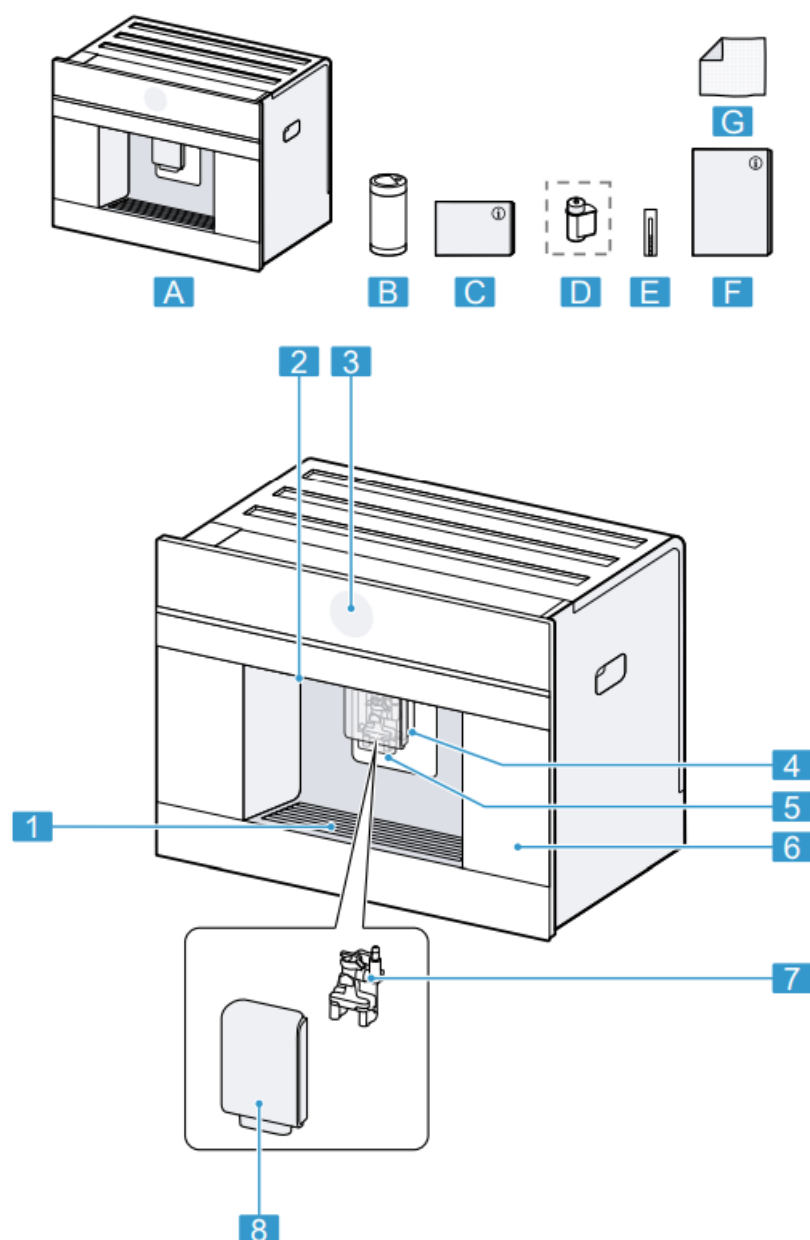
(Child Safety Lock):

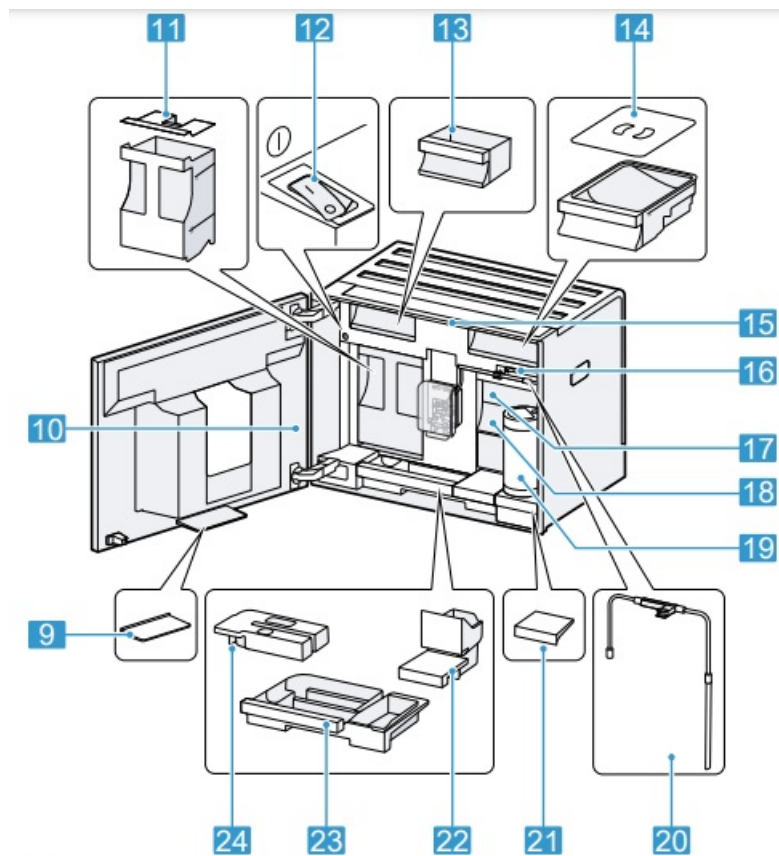
1. Activate or deactivate the child safety lock using the specified instructions.

(Favorites):

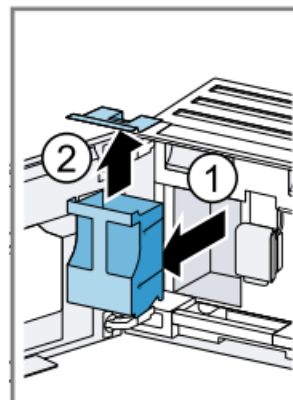
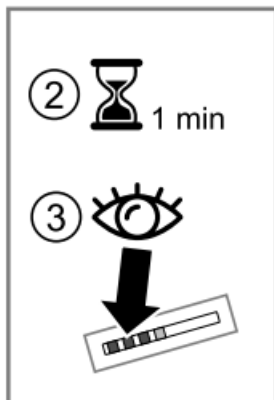
1. Create your favorite settings from the classic or coffee world options.

Note: For more detailed instructions and specific information, please refer to the user manual provided with the product.



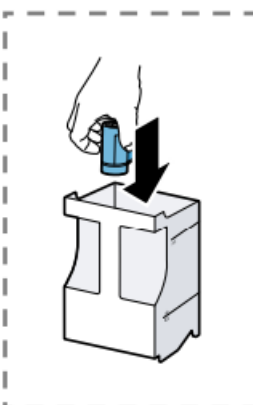
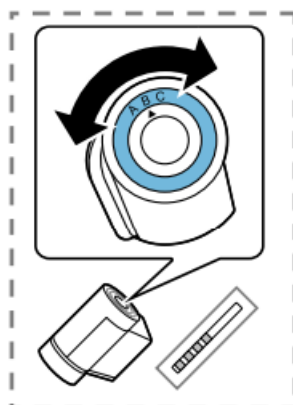
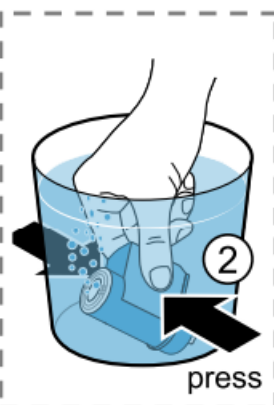
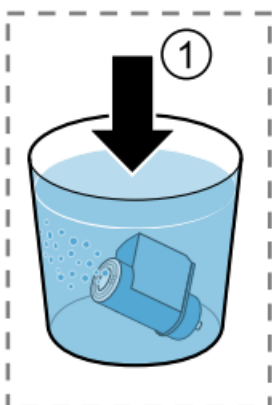


3



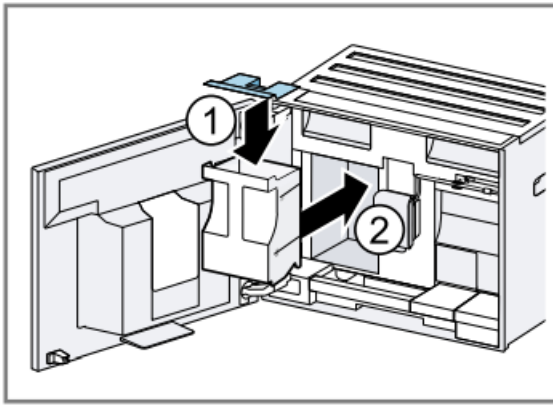
4

5

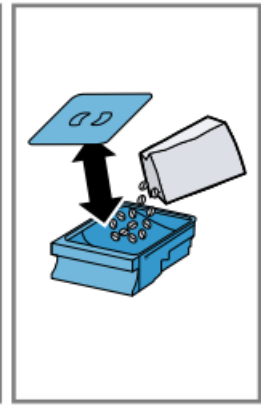
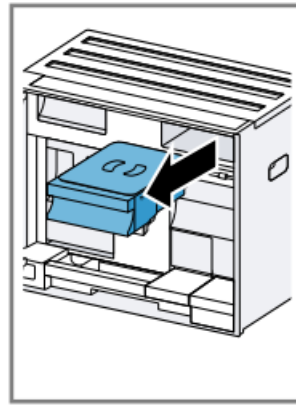
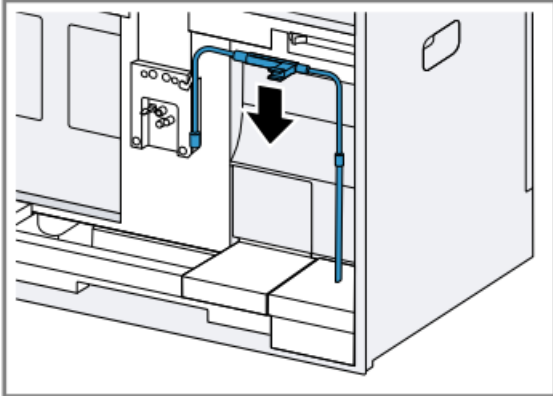


6

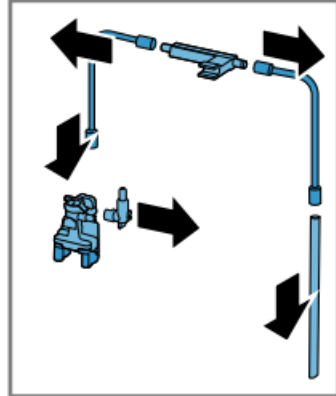
7



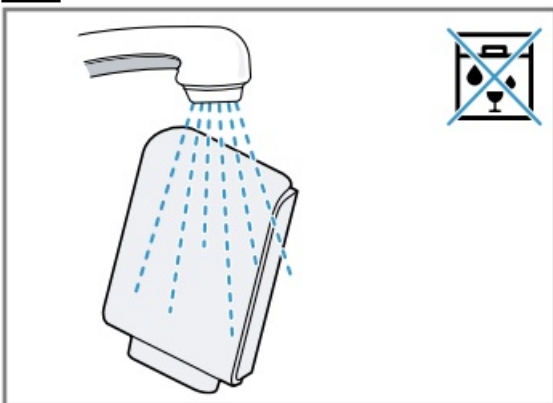
8



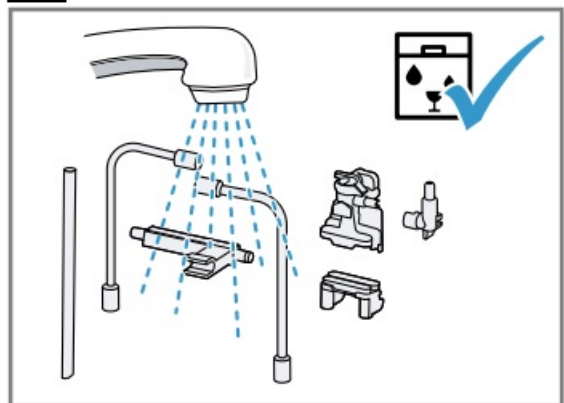
9



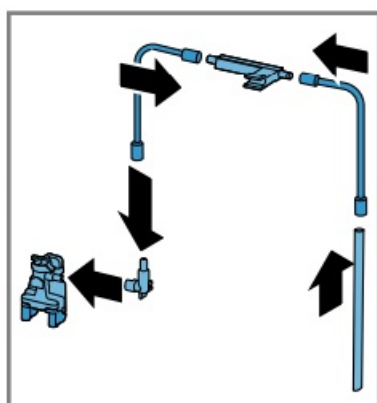
12



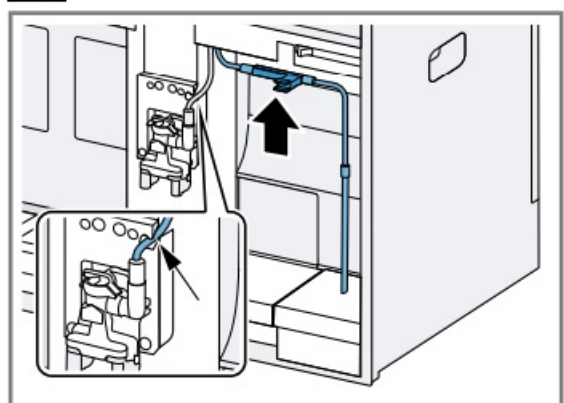
13



14



15

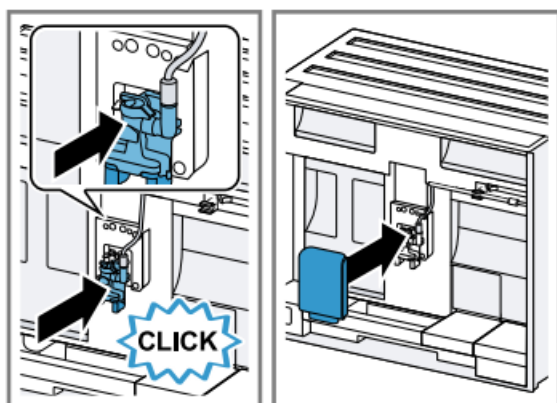


16

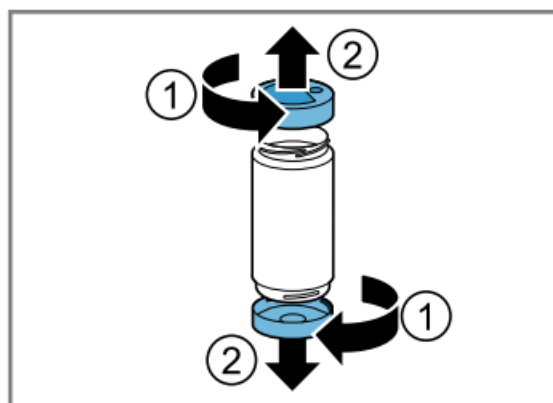


17

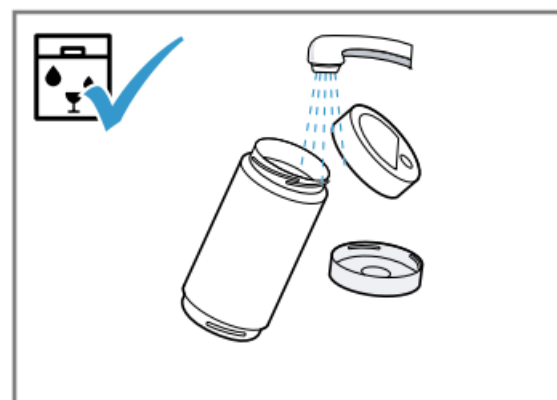




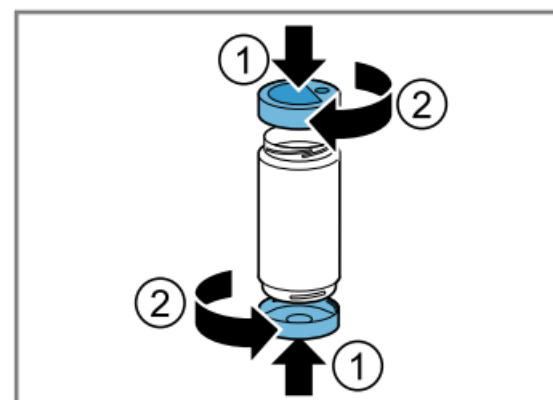
18



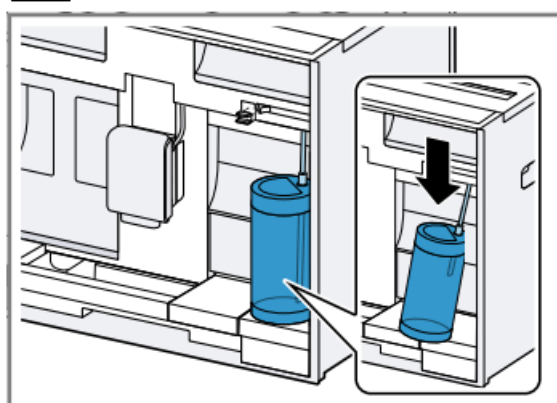
19



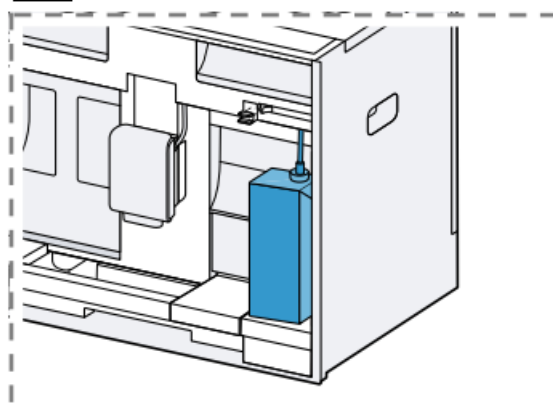
20



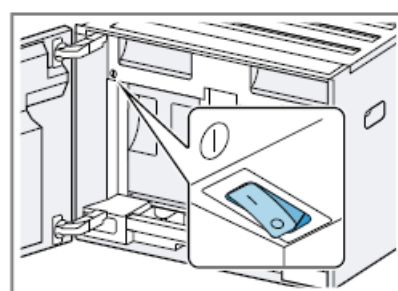
21



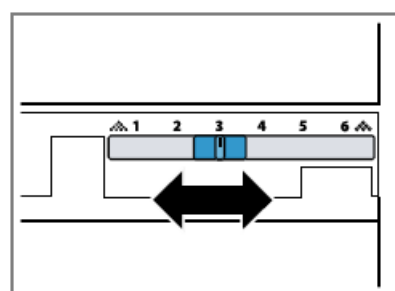
22



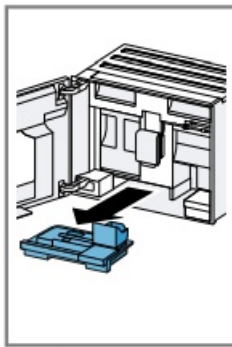
23



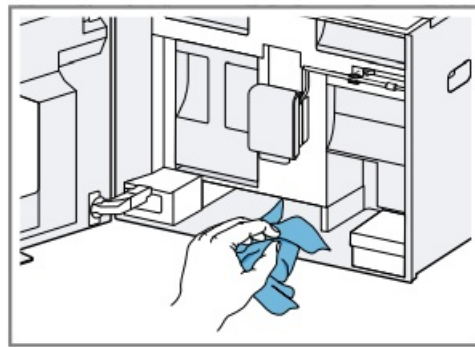
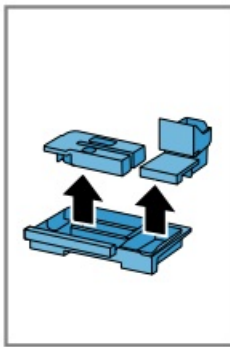
24



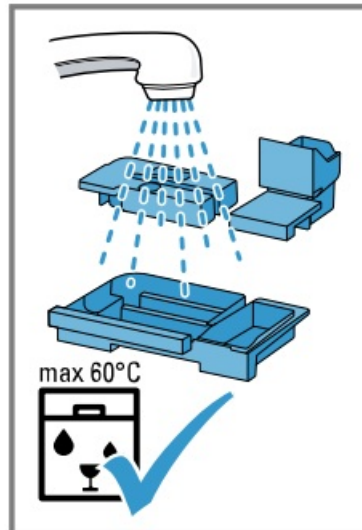
25



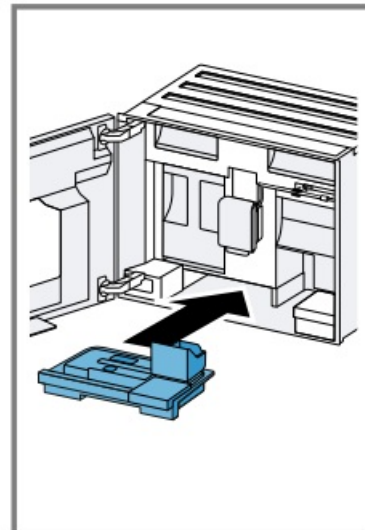
26



27



28



1. Safety

Observe the following safety instructions.

1. General information

- ; Read this instruction manual carefully.
- ; Keep the instruction manual and the product information safe for future reference or for the next owner.
- ; Do not connect the appliance if it has been damaged in transit.

2. Intended use

Only use this appliance:

- ; for preparing hot drinks.
- ; in private households and in enclosed spaces in a domestic environment.
- ; up to an altitude of max. 2000 m above sea level.

3. Restriction on user group

This appliance may be used by children aged 8 or over and by people who have reduced physical, sensory or mental abilities or inadequate experience and/or knowledge, provided that they are supervised or have been instructed on how to use the appliance safely and have understood the resulting dangers. Do not let children play with the appliance. Children must not perform cleaning or user maintenance unless they are at least 8 years old and are being supervised. Keep children under the age of 8 years away from the appliance and power cable.

4. Safe installation

WARNING – Risk of electric shock!

Incorrect installation is dangerous.

- ▶ Connect and operate the appliance only in accordance with the specifications on the rating plate.
- ▶ Always use the supplied power cable for the new appliance.
Connect the appliance to a power supply with alternating current only via a properly installed socket with earthing.
- ▶ The protective conductor system of the domestic electrical installation must be properly installed.
- ▶ Only trained specialist personnel may carry out the fixed water connection.
- ▶ When connecting or working on the fixed water connection, disconnect the appliance from the mains power supply.
- ▶ Comply with the legal regulations of the respective country, the local electricity company and the water company.
- ▶ Do not connect the appliance to the mains power supply until it has been connected to a fixed water supply.

If the appliance or the power cord is damaged, this is dangerous.

- ▶ Never operate a damaged appliance.
 - ▶ Never operate an appliance with a cracked or fractured surface.
 - ▶ Never pull on the power cord to unplug the appliance. Always unplug the appliance at the mains.
 - ▶ If the appliance or the power cord is damaged, immediately unplug the power cord or switch off the fuse in the fuse box.
 - ▶ Call customer services. → Page 69
- Improper repairs are dangerous.
- ▶ Repairs to the appliance should only be carried out by trained specialist staff.
 - ▶ Only use genuine spare parts when repairing the appliance.
 - ▶ If the power cord or the appliance power cable of this appliance is damaged, it must be replaced with a special power cord or special appliance power cable, which is available from the manufacturer or its Customer Service.

5. Safe use

WARNING – Risk of suffocation!

Children may put packaging material over their heads or wrap themselves up in it and suffocate.

- ▶ Keep packaging material away from children.
- ▶ Do not let children play with packaging material. Safety Children may breathe in or swallow small parts, causing them to suffocate.
- ▶ Keep small parts away from children.
- ▶ Do not let children play with small parts.

WARNING – Risk of electric shock! An ingress of moisture can cause an electric shock.

- ▶ Never immerse the appliance or the power cord in water.
- ▶ Liquids must not be spilled on the appliance plug connection.
- ▶ Only use the appliance in enclosed spaces.
- ▶ Never expose the appliance to intense heat or humidity.

- ▶ Do not use steam- or high-pressure cleaners to clean the appliance

WARNING – Risk of fire!

The appliance will become hot.

- ▶ Ventilate the appliance adequately.
- ▶ Never operate the appliance with the cupboard door closed.

It is dangerous to use an extended power cord and non-approved adapters.

- ▶ Do not use extension cables or multiple socket strips.
- ▶ Only use adapters and power cords approved by the manufacturer.
- ▶ If the power cord is too short and a longer one is not available, please contact an electrician to have the domestic installation adapted.

WARNING – Risk of burns!

Some parts of the appliance become very hot.

- ▶ Never touch hot appliance parts.
- ▶ Allow hot appliance parts to cool down before touching.

WARNING – Risk of scalding!

Freshly prepared drinks are very hot.

- ▶ Leave drinks to cool down if necessary.
- ▶ Do not let escaping liquids or steam come into contact with your skin. A remote start via the Home Connect app while the appliance is unattended may cause scalding to third parties.
- ▶ Do not reach under the coffee outlet during the dispensing of drinks.
- ▶ Keep other persons, in particular children, away from the appliance.

WARNING – Risk of injury!

Improper use of the appliance may endanger the user.

- ▶ To avoid injuries, only use the appliance for its intended purpose. Trapped fingers when closing the appliance door.
- ▶ Be careful of your fingers when closing the appliance door. The grinder rotates.
- ▶ Never reach into the grinder

WARNING – Danger

Caution

Warning for wearers of pacemakers

The appliance contains permanent magnets. They may affect electronic implants, e.g. pacemakers or insulin pumps.

- ▶ People with electronic implants must stand at least 10 cm away from the appliance and appliance door.
- ▶ Keep a minimum distance of 10 cm from the water tank, milk container, coffee dregs container, beverage outlet cover, beverage dispenser, beverage outlet, milk system holder, brewing chamber cover and brewing unit.

WARNING – Risk of harm to health!

Soiling on the appliance may be harmful to health. Contaminated water may be harmful to health.

- ▶ Connect the appliance exclusively to a cold water connection. Circulation of the water must be guaranteed.
- ▶ Observe the hygiene regulations during installation and operation.

Preventing material damage

ATTENTION!

Risk of damage to the appliance. If the appliance is not started up correctly, it may be damaged.

- ▶ Use the appliance in frost-free rooms only.
- ▶ If the appliance has been transported or stored below 0 °C, wait 3 hours at room temperature before starting it

up.

- ▶ After plugging in, always wait approx. 5 seconds. Improper installation may cause material damage.
- ▶ Observe the installation instructions for the appliance installed above or below.
- ▶ When installing the appliance above a warming drawer, observe a niche height of 590 mm.
- ▶ The connection to the domestic water supply and all equipment and devices used to supply water to the appliance must comply with the applicable provisions of the respective country.
- ▶ Only trained specialist personnel may carry out the fixed water connection.
- ▶ Connect the appliance to a cold water pipe only.
- ▶ The water quality must comply with the drinking water regulations of the individual country in which the appliance is operated.
- ▶ Water circulation must be guaranteed.
- ▶ Ensure that the water pressure in the water supply system is at least 50 kPa (0.5 bar) and max. 1000 kPa (10 bar).
- ▶ If the water pressure exceeds the maximum value indicated, install a pressure-reducing valve between the fixed water connection and the hose set of the appliance. Unsecured units may fall over.
- ▶ Secure units to the wall using a standard bracket

Environmental protection and saving energy

Disposing of packaging

The packaging materials are environmentally compatible and can be recycled.

- ▶ Sort the individual components by type and dispose of them separately.

Tips for saving energy

- If you follow these instructions, your appliance will use less power. Set the interval for automatic switchoff to the smallest value. a If the appliance is not being used, it will switch itself off earlier.
 - → “Basic settings”,
Do not interrupt the dispensing process prematurely.
 - The amount of water or milk that is heated is used optimally.
Descale the appliance regularly.
 - Limescale deposits increase the appliance’s energy consumption Installation and connection














Installation and connection

Documents / Resources



[BOSCH CTL9181D0 Series 8 Fully Automatic Espresso Machine](#) [pdf] Instruction Manual
CTL9181D0 Series 8 Fully Automatic Espresso Machine, CTL9181D0, Series 8 Fully Automatic Espresso Machine, Fully Automatic Espresso Machine, Automatic Espresso Machine, Espresso Machine

References

-  [Home Appliances Global Website | Bosch](#)
-  [Connect.com](#)
-  [Home.co.uk: Property Search, Homes For Sale, Estate Agents, Sell Your House](#)
-  [Fairway Independent Mortgage Corporation](#)
-  [home.com.ua - Парковочная страница](#)
-  [iCloud](#)
-  [Nect | Home](#)
-  [Home Appliances Global Website | Bosch](#)
-  [BOSCH Service | Service worldwide](#)
-  [Welcome to MyBosch](#)
-  [Connect your household | Home Connect](#)
-  [SERBÄ°S](#)
-  [Ana sayfa | Bosch Ev Aletleri Resmi Yetkili Servisi | 444 6 333](#)
- [User Manual](#)