

Contents [[hide](#)]

[1 BOSCH BRC3200 Mini Remote and System Controller](#)

[2 Specifications](#)

[3 Product Usage Instructions](#)

[4 Battery](#)

[5 Care for your battery and e-bike](#)

[6 FAQ](#)

[7 Documents / Resources](#)

[7.1 References](#)



BOSCH BRC3200 Mini Remote and System Controller



Specifications

- **Regulatory Compliance:** FCC Part 15, ISED Licence-Exempt RSS(s)
- **Radiofrequency Output Power:** Below FCC limits
- **Operating Environment:** Uncontrolled

Product Usage Instructions

- **Regulatory Notices:**

This product complies with FCC Part 15 regulations. It must not cause harmful interference and should accept any interference received. Any changes or modifications not approved by the manufacturer may void FCC authorization.

- **Radiofrequency Radiation Exposure:**

The radiated output power is below FCC limits, but human contact during normal operation should be minimized. The device is suitable for uncontrolled environments without distance restrictions. It should not be co-located with other transmitters or antennas.

- **ISED Notice (Canada):**

This device contains licence-exempt transmitter(s)/receiver(s) complying with ISED's licence-exempt RSS(s). It must not cause interference and should accept any interference. It meets Canada's radiation exposure limits for uncontrolled environments and should not be co-located with other transmitters or antennas.

Welcome to the family!

This quick start guide explains the basic operation of the Bosch smart system on your bike. This guide is also available online in your language. Use the codes or links below to access the online guide.

Even if you've been riding a bike for years, you should read this guide, as well as:

- The Bicycle Owner's Manual that came with your bike
- **The comprehensive Bosch smart system manual, found online at:**
 1. **TREK:** trekbikes.com/manuals
 2. **Diamant®:** dianantrad.com/bike-handbuecher
 3. **Electra:** electra.trebikes.com/electra-manuals



These manuals contain important safety information and useful suggestions about the proper use and maintenance of your bike and how to properly dispose of electrical components. If you do not have access to a computer or the Internet, you can request a printed manual from your local authorized retailer. Read all instructions. What you don't know could seriously hurt you or others. Be smart. Read and know before you go.

A few things to know about riding your new e-bike

1. Start slow

We know — fast is fun. But e-bikes take a bit of getting used to. It may be tempting to ramp your e-bike up to the fastest setting right away, but we recommend taking it nice and easy the first few rides. Start on the lowest assist setting and learn the feeling of pedal assistance.

2. Brake sooner

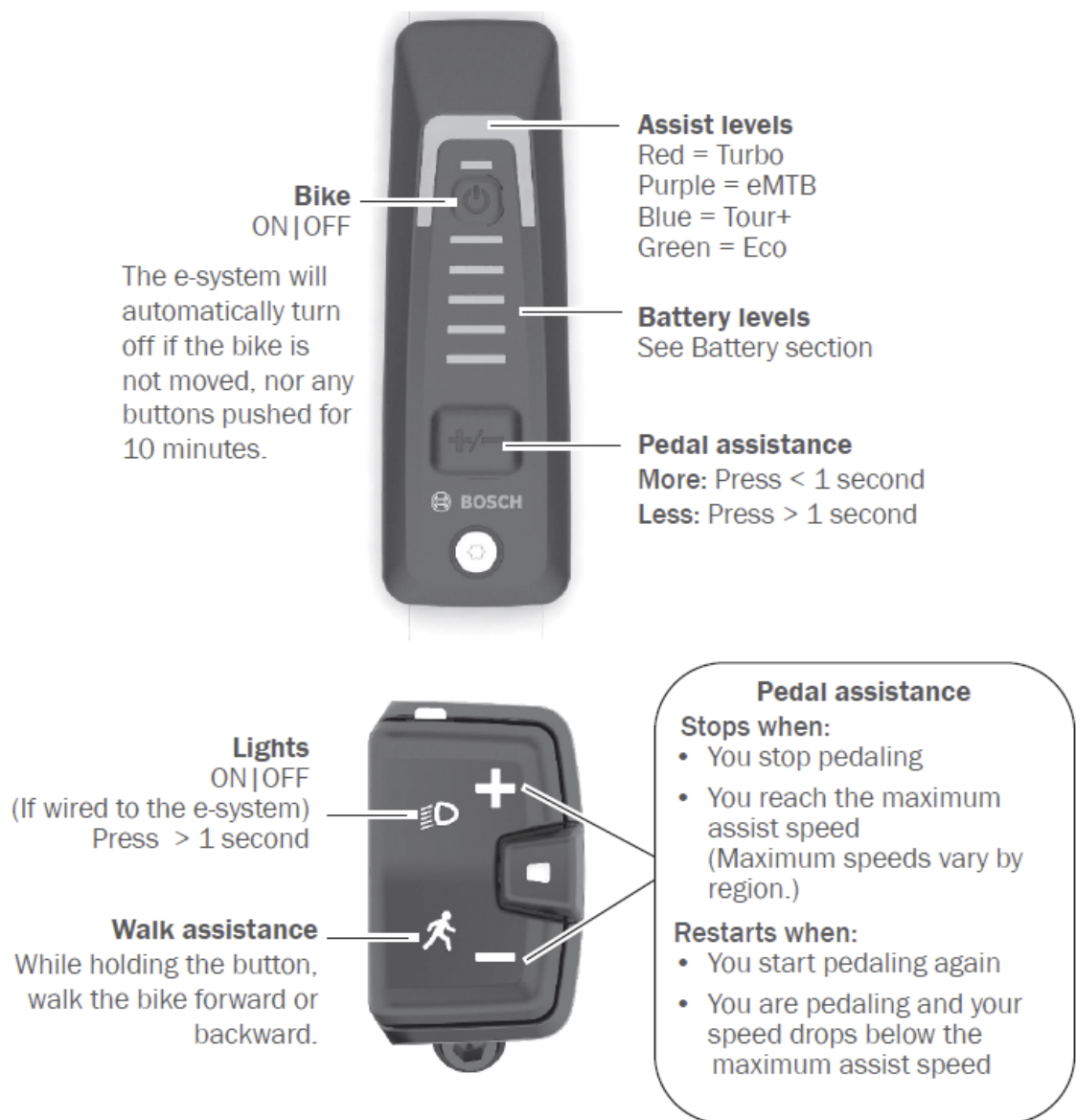
E- bikes are heavier than normal bikes, and they move faster. More power, more speed, and more weight. Once you get moving, you'll need more time to react, so you should start slowing down sooner on your e-bike than you would on a normal bike. When you're getting used to your new e-bike, start braking with a lighter hand and a gradual pull of the brake levers. And never grab just your front brake lever — brake with both front and rear evenly.

3. You're faster than you look

E- bikes look just like regular bikes, so drivers and pedestrians might not expect you to be riding as fast as your e-bike allows. Ride with extra care and pay greater attention to your surroundings.

4. All bike rules still apply

While your new e-bike will bring you a new level of freedom and fun, you're still responsible for knowing and following all the rules of the road, paths, and trails in your area. Have fun out there, but with greater speed, there is greater responsibility!

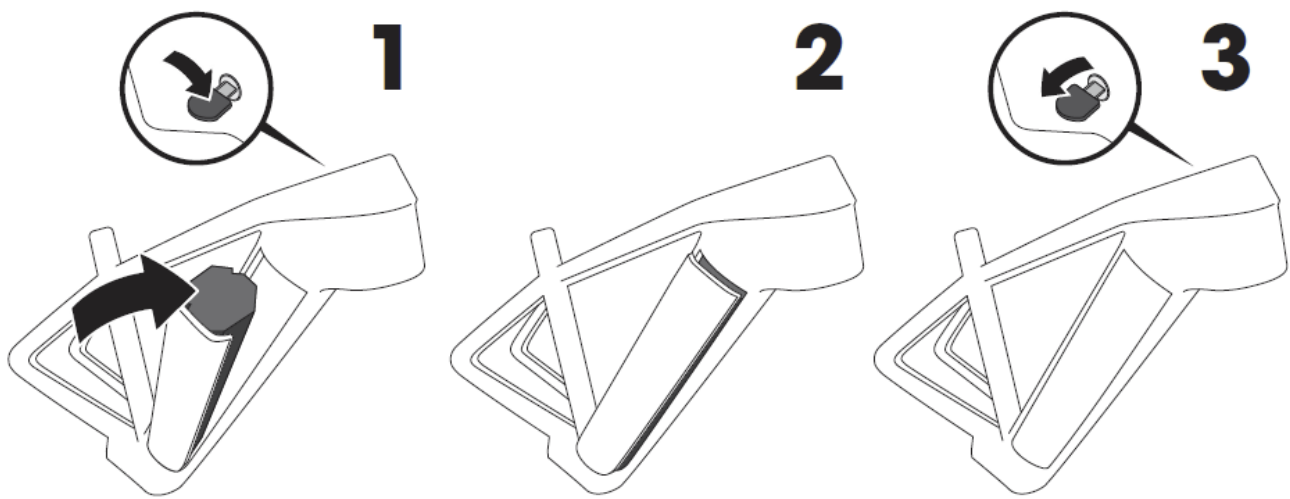


Battery

Install or remove the battery

Before installing or removing the battery, make sure the battery and the bike are OFF. No LEDs should be illuminated on the battery or the display.

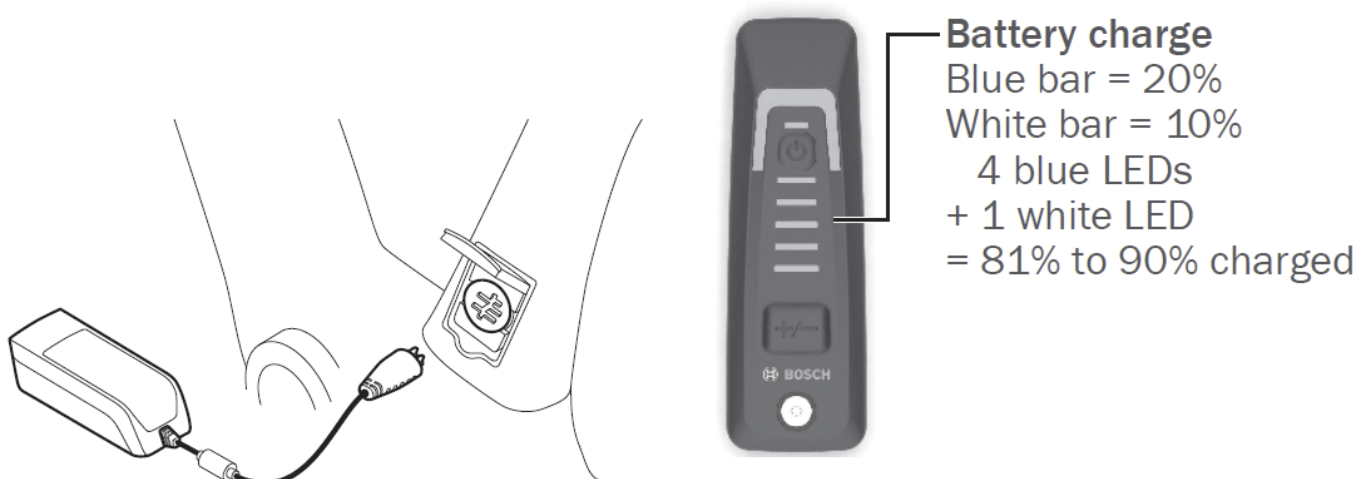
Install: 1 ► 2 ► 3 **Remove:** 3 ► 2 ► 1



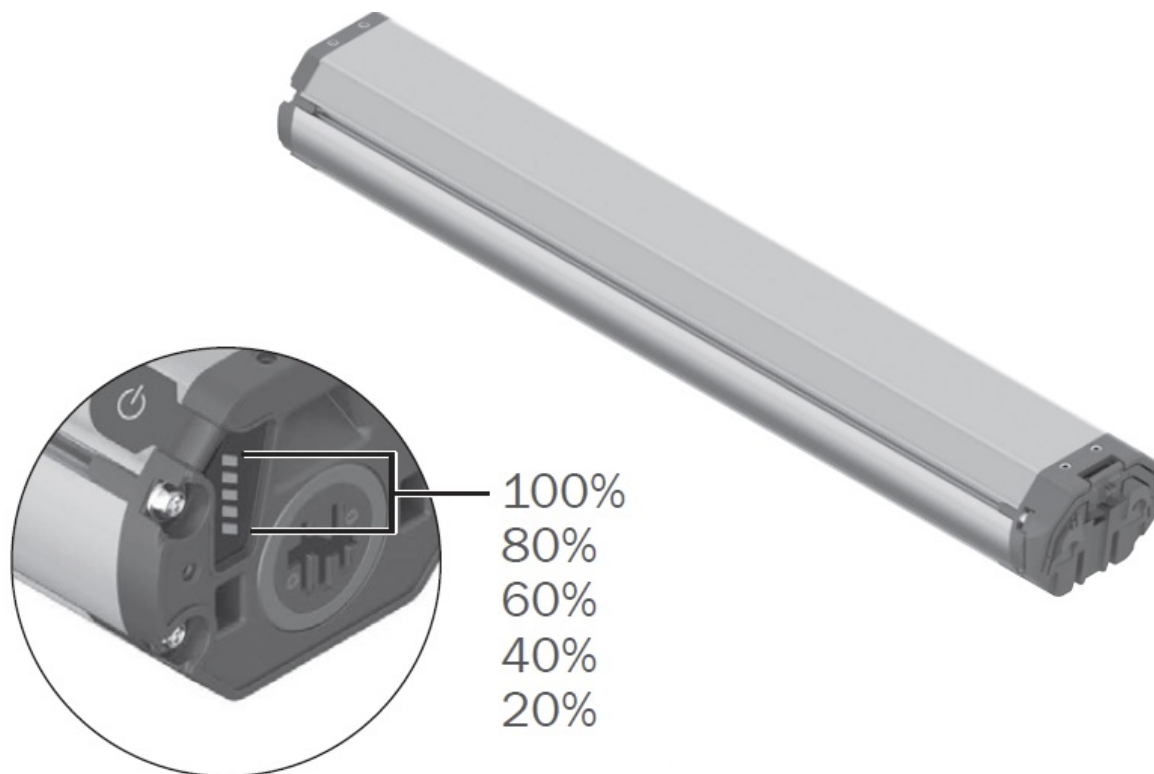
Charge the battery

- The battery is supplied partially charged. For best performance, fully charge the battery before riding your e-bike.
- The battery can be charged while installed on the bike or off the bike.
- **WARNING:** Be safe. Follow these safety warnings when charging your battery:
- Only charge the battery with a Bosch smart system charger. Using the wrong charger risks the life of the battery and presents a potential fire hazard.
- Only use the charger in dry, indoor areas.
- Do not leave a charging battery unattended.
- When the battery is fully charged, disconnect the charger from the battery and wall socket.

On the bike



Off the bike



LEDs flash while battery is charging. All LEDs will be lit when fully charged.

Care for your battery and e-bike

Along with the fun of having an e-bike comes a few special warnings to keep you and your bike safe.

Install accessories carefully

Consult with a certified e-bike technician before installing accessories. Using the wrong bolt in the wrong place could cause a short circuit in the electrical system and/or damage the battery which might lead to over-heating. A battery that has been severely impacted could catch fire. If you suspect damage to your battery, visit your local bike shop immediately to have the battery inspected.

Store the battery properly

If you won't be riding your e-bike for 3 months or more, remove the battery from the bike, and take the following steps to properly store it.

- Store your e-bike battery in a dry, ventilated location that is away from moisture, heat sources, and combustible or easily flammable objects.

- Store your battery at the recommended temperature. Storing your battery outside of this range could damage the battery, affect its performance, or cause the battery to catch fire.
- **Storage range:** 50°F – 68°F (10°C – 20°C)
- Monitor the battery charge. Keep the battery charged to a minimum of 30% to 60%. The battery can be damaged by deep discharge.
- When the battery charge is restored, remove the battery from the charger. Do not store your battery connected to the charger.

Transport your e-bike safely

- The Bosch drive system adds weight to the bicycle. Overloading a bike rack can result in death or serious injury. Refer to your bicycle rack manual to be sure it is compatible with your e-bike.
- Remove the battery from the e-bike and put it in the passenger cabin for safe and secure transport. A battery left on the bike could loosen during transport and become a hazard.
- Do not leave the battery in your car in the summer. The temperature inside your car could exceed safe temperatures for battery storage. Extreme heat could damage your battery or cause it to catch fire.

Wash your e-bike gently

Do not submerge your e-Bike or its components in water or wash them with a high-pressure hose. Water could contact the electrical system and damage it.

Repair and maintain your e-bike safely

Always remove the battery before beginning any maintenance work on your e-bike.

Never attempt to open any parts of the electrical system. Always contact your local bike shop to service any parts of the electrical system.

Contact

TREK

- **US Head Office**

- Trek US Customer Service
- 801 W Madison Street Waterloo, Wisconsin 53594 USA
- Tel.: 920.478.4678
- **European Head Office**
 - Bikeurope B.V./Trek Benelux Customer Service Ceintuurbaan 2-20C 3847 LG Harderwijk The Netherlands
 - Tel.: +31 (0)88-4500699
- **United Kingdom**
 - Trek Bicycle Corporation Ltd. 9 Sherbourne Drive, Tilbrook, Milton Keynes, MK7 8HX
 - Tel: +44 1908 360 140
- **Australia & New Zealand**
 - Trek Australia & New Zealand Customer Service PO Box 1747 Fyshwick, ACT2609 Australia
- **Australia**
 - Tel.: +61 2 6173 2400
 - customerservice_australia@trekbikes.com
- **New Zealand**
 - Tel.: 0800-873-569
 - customerservice_newzealand@trekbikes.com

Diamant

- **European Head Office**
- Trek Fahrrad GmbH Auenstrasse 10 CH-8600 Dübendorf Switzerland
- Tel.: 00800 8735 8735

Electra

- **US Head Office**
 - Electra Bicycle Company 364 2nd Street Encinitas, CA 92024 USA
 - Tel.: 1.800.261.1644
- **European Head Office**
 - Bikeurope B.V. Ceintuurbaan 2-20C 3847 LG Harderwijk The Netherlands

◦ Tel.: +31 (0)88-4500699

© 2022 Trek Bicycle Corporation | 5308299– 5308300

FAQ


Q: Can I use the device in any environment?

A: The device is suitable for uncontrolled environments as long as human contact during operation is minimized and it complies with regulatory radiation exposure limits.

Q: What should I do if the device causes interference?

A: If the device causes interference, try to relocate it or adjust its position to reduce interference. Ensure it is not co-located with other transmitters or antennas.

Documents / Resources

	BOSCH BRC3200 Mini Remote and System Controller [pdf] User Manual 2AWRC-BRC3200, 2AWRCBRC3200, brc3200, BRC3200 Mini Remote and System Controller, BRC3200, Mini Remote and System Controller, System Controller, Controller
---	---

References

- [User Manual](#)

📁 Bosch

🔍 2AWRC-BRC3200, 2AWRCBRC3200, Bosch, brc3200, BRC3200 Mini Remote and System Controller, controller, Mini Remote and System Controller, System Controller

—Previous Post

[BOSCH PST 800 PEL Garden Jigsaw Instruction Manual](#)

Next Post—

[BOSCH BRC3200 Kiox 400C Display For Performance Riders Instruction Manual](#)

Leave a comment

Your email address will not be published. Required fields are marked *

Comment *

Name

Email

Website

☐ Save my name, email, and website in this browser for the next time I comment.

Post Comment

Search:

e.g. whirlpool wrf535swhz

Search

[Manuals+](#) | [Upload](#) | [Deep Search](#) | [Privacy Policy](#) | [@manuals.plus](#) | [YouTube](#)

This website is an independent publication and is neither affiliated with nor endorsed by any of the trademark owners. The "Bluetooth®" word mark and logos are registered trademarks owned by Bluetooth SIG, Inc. The "Wi-Fi®" word mark and logos are registered trademarks owned by the Wi-Fi Alliance. Any use of these marks on this website does not imply any affiliation with or endorsement.