



borne KBMS250 Wireless Multimedia Keyboard and Mouse Combo User Manual

[Home](#) » [Borne](#) » borne KBMS250 Wireless Multimedia Keyboard and Mouse Combo User Manual 

Contents

- [1 KBMS250 Wireless Multimedia Keyboard and Mouse Combo](#)
- [2 Product Information](#)
- [3 Product Usage Instructions](#)
- [4 IMPORTANT SAFETY INSTRUCTIONS](#)
- [5 FCC Warning](#)
- [6 INSTALLING BATTERIES](#)
- [7 CONNECTING THE KEYBOARD AND MOUSE](#)
- [8 LIMITED WARRANTY](#)
- [9 Documents / Resources](#)
 - [9.1 References](#)
- [10 Related Posts](#)

borne®

KBMS250 Wireless Multimedia Keyboard and Mouse Combo



Product Information

The KBMS250K and KBMS250M are wireless keyboard and mouse sets.

The product comes with a USB dongle that needs to be inserted into an available USB port on your desktop computer or laptop. The keyboard requires 2 AAA size batteries and the mouse requires 1 AA size battery for operation. The product is compliant with part 15 of the FCC Rules and has been evaluated to meet general RF exposure requirements. It is important to follow the safety instructions provided in the user manual for safe usage.

Product Usage Instructions

Installing Batteries

1. Remove the top mouse cover
2. Remove the USB dongle
3. Insert 1 x AA size battery (not included) in the correct polarity position and replace the mouse cover
4. Remove the battery compartment cover on the back side of the keyboard
5. Insert 2 x AAA size batteries (not included) in the correct polarity position and replace the battery cover

CAUTION:

- Do not mix old and new batteries.
- Do not mix alkaline, standard (carbon-zinc) or rechargeable (nickel-cadmium) batteries.
- If the unit is not to be used for an extended period of time, remove the batteries. Old or leaking batteries can cause damage to the unit and may void the warranty.
- Do not dispose of batteries in fire, batteries may explode or leak.

Battery Disposal:

Do not dispose of the batteries in normal household waste. For disposal and recycling, please contact your local waste management authorities.

Connecting the Keyboard and Mouse

1. Turn on your desktop computer or laptop
2. Insert the USB dongle into an available USB port on your desktop computer or laptop
3. Your plug-and-play keyboard and mouse will be ready to use

Need Help?

If you encounter any difficulties with this product, please call or email us and our representatives will be ready to help you.

IMPORTANT SAFETY INSTRUCTIONS

- Read these instructions carefully.
- Keep these instructions in a safe place and follow all instructions.
- Do not use this product near water.
- Cleaning: Do not use liquid cleaners or aerosol cleaners. Clean only with a dry damp cloth.
- Do not place near any heat sources such as radiators, heat registers, stoves, or other apparatuses (including

amplifiers) that produce heat.

- Only use attachments/accessories specified by the manufacturer.
- Refer all servicing to qualified service personnel. Servicing is required when the product has been damaged in any way, such as objects have fallen into the product, does not operate normally, or has been dropped.

FCC Warning

This device complies with part 15 of the FCC Rules. Operation is subject to the following two conditions:

1. This device may not cause harmful interference, and
2. This device must accept any interference received, including interference that may cause undesired operation.

NOTE 1: This equipment has been tested and found to comply with the limits for a Class B digital device, pursuant to part 15 of the FCC Rules. These limits are designed to provide reasonable protection against harmful interference in a residential installation. This equipment generates, uses and can radiate radio frequency energy and, if not installed and used in accordance with the instructions, may cause harmful interference to radio communications. However, there is no guarantee that interference will not occur in a particular installation. If this equipment does cause harmful interference to radio or television reception, which can be determined by turning the equipment off and on, the user is encouraged to try to correct the interference by one or more of the following measures:

- Reorient or relocate the receiving antenna.
- Increase the separation between the equipment and receiver.
- Connect the equipment into an outlet on a circuit different from that to which the receiver is connected.
- Consult the dealer or an experienced radio/TV technician for help.

NOTE 2: Any changes or modifications to this unit not expressly approved by the party responsible for compliance could void the user's authority to operate the equipment.

The device has been evaluated to meet general RF exposure requirement. The device can be used in portable exposure condition without restriction.

WARNING

Changes or modifications to this unit not expressly approved by the party responsible for compliance could void the user's authority to operate the equipment.

IC Warning

This device complies with Industry Canada license-exempt RSS standard(s). Operation is subject to the following two conditions:

1. This device may not cause interference, and
2. This device must accept any interference, including interference that may cause undesired operation of the device.

Under Industry Canada regulations, this radio transmitter may only operate using an antenna of a type and maximum (or lesser) gain approved for the transmitter by Industry Canada. To reduce potential radio interference to other users, the antenna type and its gain should be so chosen that the equivalent isotropically radiated power (e.i.r.p.) is not more than that necessary for successful communication.

1. This device may not cause interference.
2. This device must accept any interference, including interference that may cause undesired operation of the device.

Any changes or modifications not expressly approved by the party responsible for compliance could void the user's authority to operate the equipment.

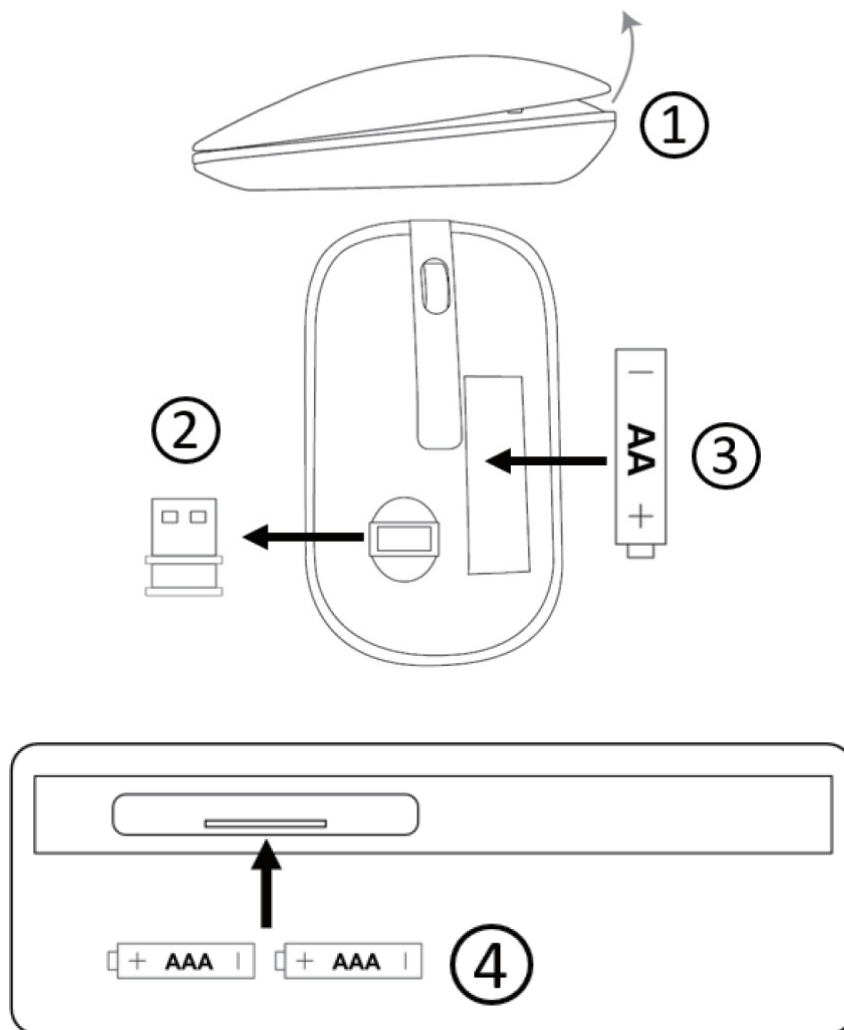
RF exposure statement:

The equipment complies with IC Radiation exposure limit set forth for uncontrolled environment.

This device complies with Canadian ICES-003 and RSS-210

- FCC ID: 2AJMW-KBMS25K
- FCC ID: 2AJMW-KBMS25M
- IC: 20174-KBMS25K
- IC: 20174-KBMS25M

INSTALLING BATTERIES



1. Remove the top mouse cover
2. Remove the USB dongle

3. Insert 1 x AA size battery (not included) in the correct polarity position and replace the mouse cover
4. Remove the battery compartment cover on the back side of the keyboard
5. Insert 2 x AAA size batteries (not included) in the correct polarity position and replace the battery cover

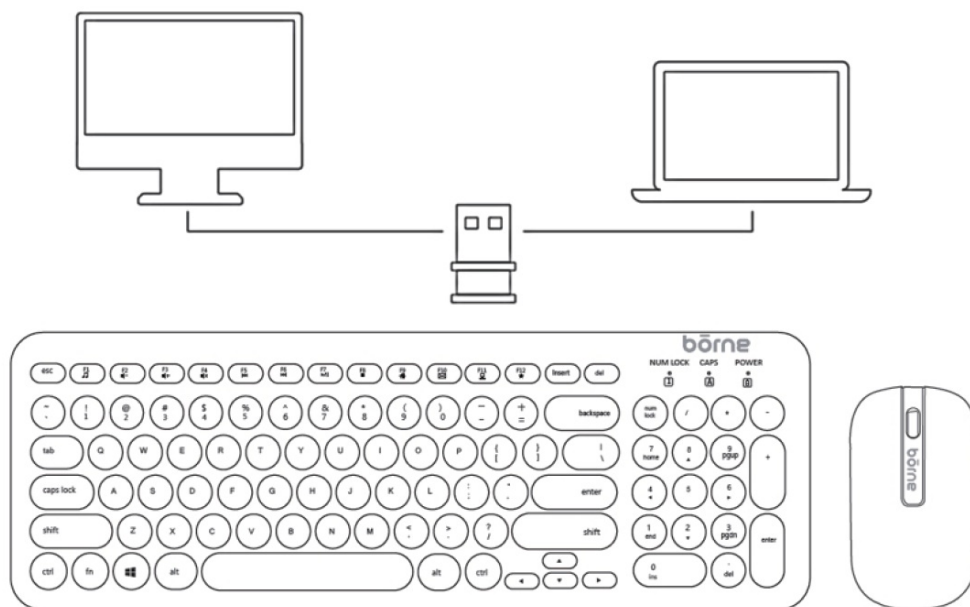
CAUTION

1. Do not mix old and new batteries.
2. Do not mix alkaline, standard (carbon-zinc) or rechargeable (nickel-cadmium) batteries.
3. If the unit is not to be used for an extended period of time, remove the batteries. Old or leaking batteries can cause damage to the unit and may void the warranty.
4. Do not dispose of batteries in fire, batteries may explode or leak.

BATTERY DISPOSAL

Do not dispose of the batteries in normal household waste. For disposal and recycling, please contact your local waste management authorities.

CONNECTING THE KEYBOARD AND MOUSE



1. Turn on your desktop computer or laptop
2. Insert the USB dongle into an available USB port on your desktop computer or laptop
3. Your plug-and-play keyboard and mouse will be ready to use

Need help? Please call us.

If you encounter any difficulties with this product, please call or email us and our representatives will be ready to help you.

Toll free: 1-800-593-6669 (Monday to Friday: 9am – 5pm EST)

Email: support@borne-lifestyle.com

Thank you for your purchase. We want you to start enjoying your product.

LIMITED WARRANTY

Warning: Some Products may contain components that are small enough to be swallowed. Keep out of the reach

of children.

Before returning your Product for service under this Warranty, (i) please read the instruction manual carefully and visit our website at www.borne-lifestyle.com for product updates and extended support documentation (e.g., Frequently Asked Questions, Common Troubleshooting Guides); (ii) please contact Edco Electronics Support if you are still having trouble with your Product.

Subject to the terms and conditions herein, Edco Electronics warrants to the original purchaser of the Product ("Customer") that the Product will be free from defects in material or workmanship under normal, noncommercial use ("Defects") for a period of 1 year.

Warranty Period encompasses separate "Coverage Periods" for Parts and Labor, with each Coverage Period to begin from the original date of Customer purchase. Parts are covered for a period of 1yr. Labour is covered for 90 days. If Customer returns a defective Product during the applicable Warranty Period, Edco Electronics will, at its option during the specified Coverage Periods for Parts and Labor (as applicable), either: (i) repair the Product or (ii) replace the Product with a new or refurbished Product, in either case free of charge to Customer for Parts and/or Labor (as applicable) during the specified Coverage Period only, and excluding applicable shipping charges for which the Customer is responsible. The foregoing states the Customer's exclusive remedy and Edco Electronics' sole liability for breach of the limited warranty contained herein.

This Warranty specifically excludes any Product (or, as applicable, any component thereof) that has Defects resulting from: (a) any neglect or misuse by a Customer, an accident, improper application, violation of operating instructions for the Product, any other Customer-induced damage, or the alteration or removal of any Product serial number; (b) any modification or repair to Product by any party other than Edco Electronics or a party authorized in writing by Edco Electronics; (c) any damage to Product due to power surges, incorrect electrical voltage, misconnection to any device, or malfunction of any device used with the Product; (d) cosmetic damage to the Product caused by normal wear and tear; (e) shipping damage that occurs while the Product is in transit; (f) damage caused by heat sources, sunlight, electromagnetic conditions, or other climatic conditions; or (g) any acts of God.

Product is sold to Customer for personal, non-commercial use only. Product is not warranted for Customer's commercial or rental use. In addition, Product is not warranted against failure, and should not be used by Customer for any application where (i) there is a risk that any data stored on Product will be breached or otherwise compromised, or (ii) the data stored on Product is relied upon for medical or lifesaving applications. Edco Electronics expressly disclaims any warranty for any of the foregoing uses to the fullest extent permitted by law. Customer assumes any and all risks associated with such uses of Product, and agrees to indemnify Edco Electronics for any damages claimed against Edco Electronics for such uses.

This Warranty specifically and expressly excludes any Product that is purchased by Customer as a "floor" or "display" model. Any such Product is purchased by Customer "AS IS" and Edco Electronics disclaims any Warranties, express or implied, in relation thereto.

EXCEPT FOR THE EXPRESS WARRANTIES STATED ABOVE AND TO THE MAXIMUM EXTENT PERMITTED BY LAW, THE PRODUCT IS PROVIDED "AS IS", AND EDCO ELECTRONICS DISCLAIMS ALL OTHER WARRANTIES, INCLUDING WITHOUT LIMITATION ANY IMPLIED WARRANTY OF (I) MERCHANTABILITY, (II) FITNESS FOR A PARTICULAR PURPOSE, OR (III) NON-INFRINGEMENT OF THIRD PARTY RIGHTS. TO THE MAXIMUM EXTENT PERMITTED BY APPLICABLE LAW, IN NO EVENT WILL EDCO ELECTRONICS BE LIABLE TO CUSTOMER OR ANY THIRD PARTY FOR ANY INDIRECT, SPECIAL, INCIDENTAL, CONSEQUENTIAL, EXEMPLARY OR PUNITIVE DAMAGES, INCLUDING, WITHOUT LIMITATION, ANY LOST PROFITS OR REVENUES, LOSS OR INACCURACY OF ANY DATA OR COST OF SUBSTITUTE GOODS, REGARDLESS OF THE THEORY OF LIABILITY (INCLUDING NEGLIGENCE). ADDITIONALLY, EVEN IF EDCO ELECTRONICS HAS BEEN ADVISED OF THE POSSIBILITY OF SUCH DAMAGES, EDCO ELECTRONICS' AGGREGATE LIABILITY TO CUSTOMER FOR ACTUAL DIRECT DAMAGES FOR ANY CAUSE WHATSOEVER SHALL BE LIMITED TO THE CUMULATIVE PRODUCT COSTS PAID BY THAT CUSTOMER FOR THE PRODUCT CAUSING SUCH DAMAGES, IF ANY.

This Warranty gives Customer specific rights, and Customer may also have other rights that vary from jurisdiction to jurisdiction.


To obtain Warranty service, Customer must call Edco Electronics Support prior to making a Product Return.

Customer must include with Product Return the following items: (i) a dated sales receipt that indicates the place of purchase, model number of Product, and amount paid; (ii) a detailed description of Customer’s problem with Product; (iii) Customer’s full name, phone number, and return address, and; (iv) a money order for any applicable shipping costs made out to Edco Electronics Inc. to cover return shipping charges to US and Canadian destinations only. Edco Electronics will not make return shipments to a P.O. Box. For shipping to international addresses, actual freight will be charged to Customer. Failure to enclose any of these items may delay the processing of your Warranty claim. Return your Product freight-prepaid in its original packaging, or packaging that affords an equal measure of protection. Please allow 4 to 6 weeks for the processing of your claim.

Edco Electronics Inc.
8484 Esplanade,
Montreal, Quebec H2P 2R7

Canada
Toll Free: 1-800-593-6669 (Monday to Friday: 9am to 5pm EST)
Email: support@borne-lifestyle.com

Documents / Resources

	borne KBMS250 Wireless Multimedia Keyboard and Mouse Combo [pdf] User Manual KBMS25M, 2AJMW-KBMS25M, 2AJMWKBMS25M, KBMS250K, KBMS250M, KBMS250 Wireless Multimedia Keyboard and Mouse Combo, KBMS250, Wireless Multimedia Keyboard and Mouse Combo, Multimedia Keyboard and Mouse Combo, Keyboard and Mouse Combo
---	---

References

- [S lifestyle.com - This website is for sale! - Shopping Resources and Information.](#)
- [Borne](#)