



# BONTEC KMT01-PJ Small Keyboard Tray Under Desk Instruction Manual

[Home](#) » [BONTEC](#) » BONTEC KMT01-PJ Small Keyboard Tray Under Desk Instruction Manual 

## Contents

- [1 BONTEC KMT01-PJ Small Keyboard Tray Under Desk](#)
- [2 Product Information](#)
- [3 Product Usage Instructions](#)
- [4 PACKAGE CONTENTS](#)
- [5 ASSEMBLY STEPS](#)
- [6 Dimension](#)
- [7 Desktop Types](#)
- [8 Documents / Resources](#)
  - [8.1 References](#)

# BONTEC

**BONTEC KMT01-PJ Small Keyboard Tray Under Desk**



## Product Information

### Specifications

- **Model:** KMT01-PJ
- **Maximum Load Capacity:** 11 lbs

### FAQ

- **Q:** What is the maximum load capacity of the product?
  - **A:** The maximum load capacity of the product is 11 lbs.
- **Q:** Can I install the product on a desk with a sloped edge?
  - **A:** No, the product cannot be installed on a desk with a sloped edge.
- **Q:** Can I install the product on a desk with drawers?
  - **A:** No, the product cannot be installed on a desk with drawers.
- **Q:** What is the maximum distance the product can slide out from the desk edge?
  - **A:** The product can slide out a total of 7.9 inches from the desk edge.
- **Q:** What is the minimum distance the product can slide under the desk edge?
  - **A:** The product can slide under a total of 11.4 inches from the desk edge.

## Product Usage Instructions

### Installation

Please follow the steps below for proper installation:

1. Before tightening the screws (B), ensure that the two keyboard boards (E&F) are aligned. If they are not aligned, unscrew the screws (B), align the boards, and then tighten the screws (B) again.
2. Do not swap around part (G) and part (H).

### **Desk Compatibility**

The product is compatible with the following desk dimensions:

- Desk Surface Thickness: Up to 1.57 inches
- Desktop Height Clearance: From 2.13 inches to 3.7 inches
- Distance from Desk Edge: Slides out up to 7.9 inches and slides under up to 11.4 inches

### **Correct Usage Methods**

Ensure proper usage of the product by following these methods:

1. Arc or special-shaped desks cannot be installed with this product.
2. Desks with aprons cannot be installed with this product.
3. Do not install on desks with sloped edges.
4. Tables with drawers cannot be installed with this product.
5. Do not install on tables with raised edges.
6. Do not install on desks with rounded edges.

### **WARNING**

If you do not understand these directions, or if you have any doubts about the safety of the installation, please call a qualified technician. Check carefully to make sure there are no missing or defective parts. Improper installation may cause damage or serious injury. Do not use this product for any purpose that is not explicitly specified in this manual. Do not exceed weight capacity. We cannot be liable for damage or injury caused by improper mounting, incorrect assembly or inappropriate use.

### **WARNING: CHOKING HAZARD**

SMALL PARTS – NOT FOR CHILDREN UNDER 3 YEARS. ADULT SUPERVISION IS REQUIRED.

### **PACKAGE CONTENTS**



A (x2)



B (x8)



C (x6)



D (x2)



E (x1)



F (x1)



G (x1)



H (x1)



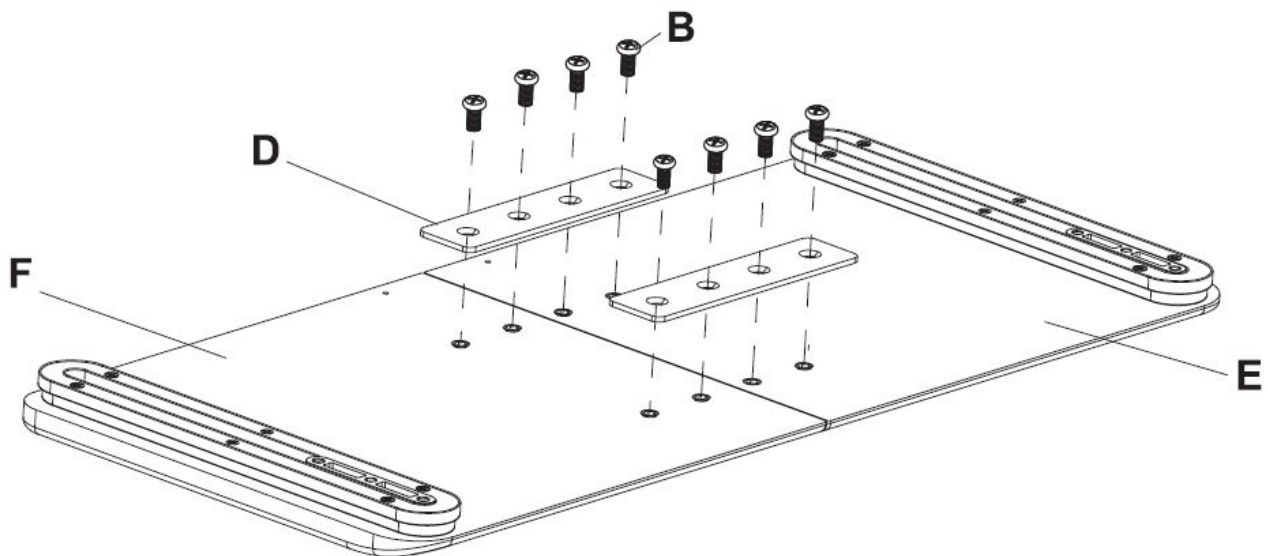
I (x1)

TOOLS NEEDED



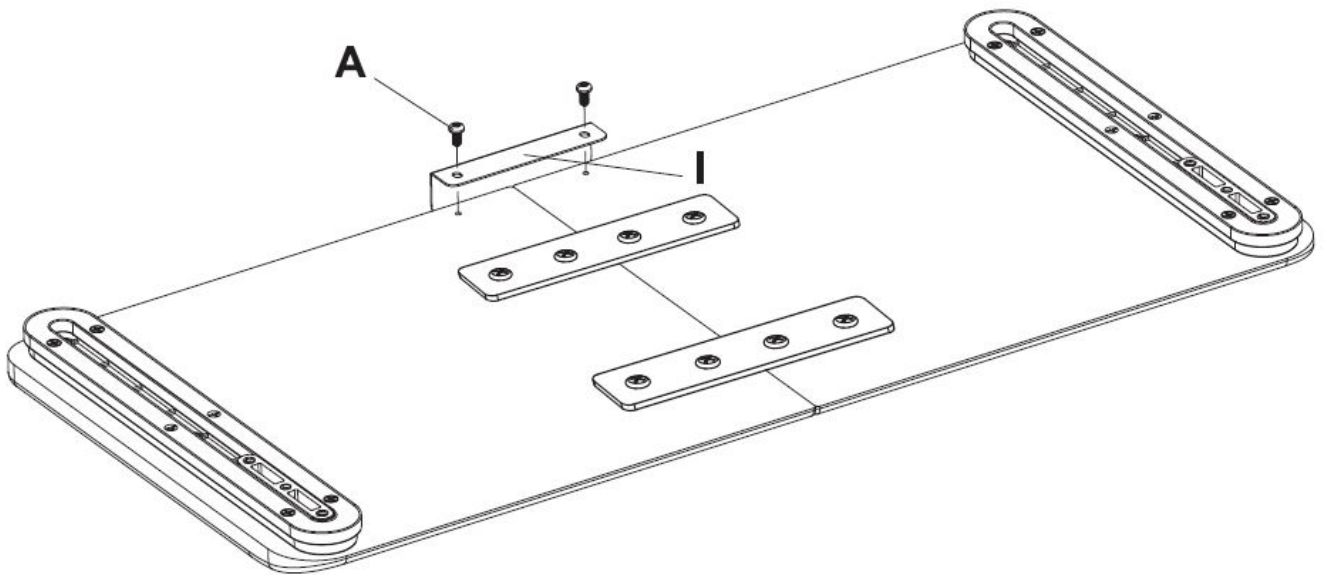
## ASSEMBLY STEPS

### • STEP 1



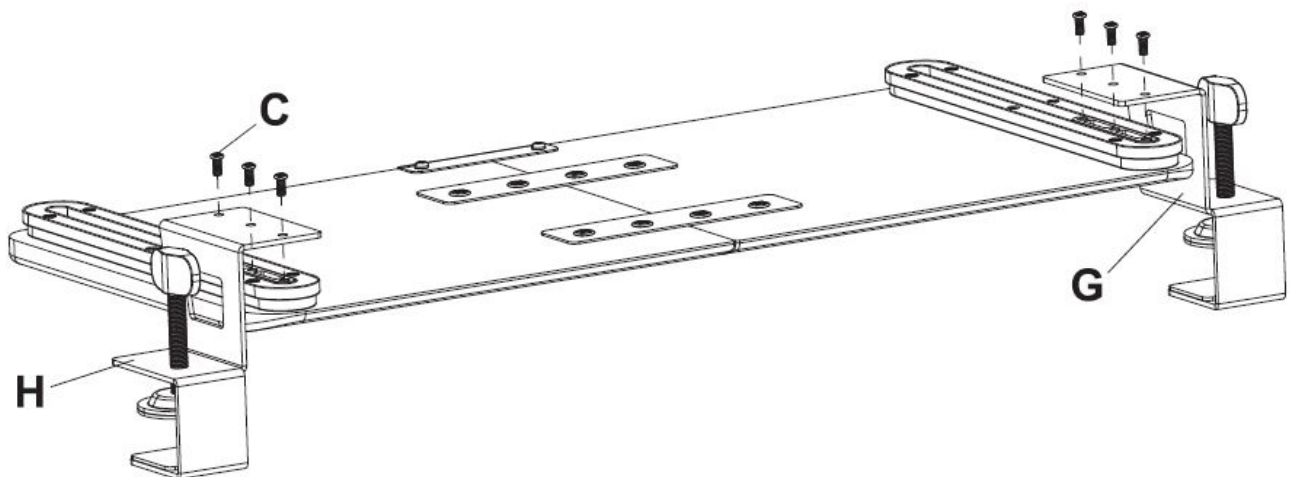
- Combine the left keyboard board (E) and the right keyboard board (F), and use the connecting board (D) on the reverse side to tighten the countersunk screws (B) with a screwdriver.
- **Warning:** Please do not fully tighten the screws (B) before the two keyboard boards (E&F) are aligned. If the two keyboard boards (E&F) are not yet aligned, please unscrew the screws (B), align the two boards and then tighten the screws (B) again.

### • STEP2



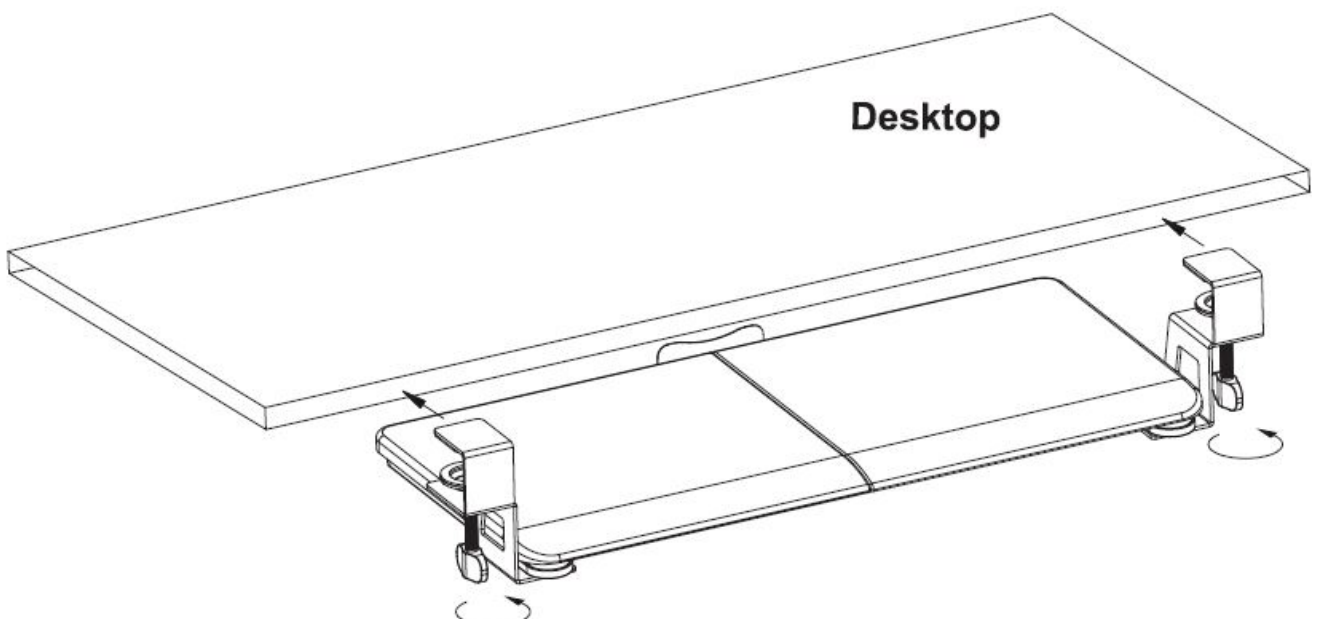
- Use the ST4.2X9.S pan-head tapping screw (A) on the back of the keyboard baffle (I) to tighten the keyboard board with a screwdriver.

• **STEP3**



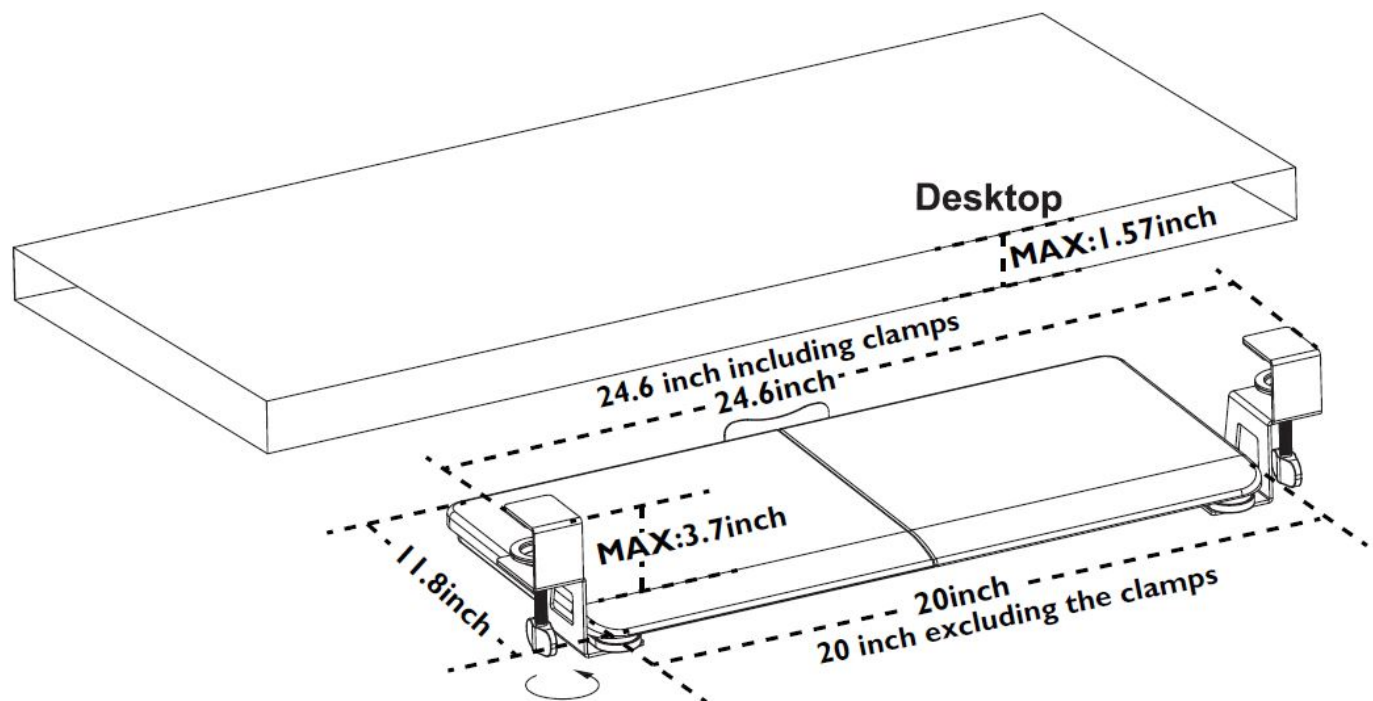
- Use MSX12 round head screws (C) to install the clamps (G, H) on the slider, and tighten with a screwdriver.

• **STEP4**



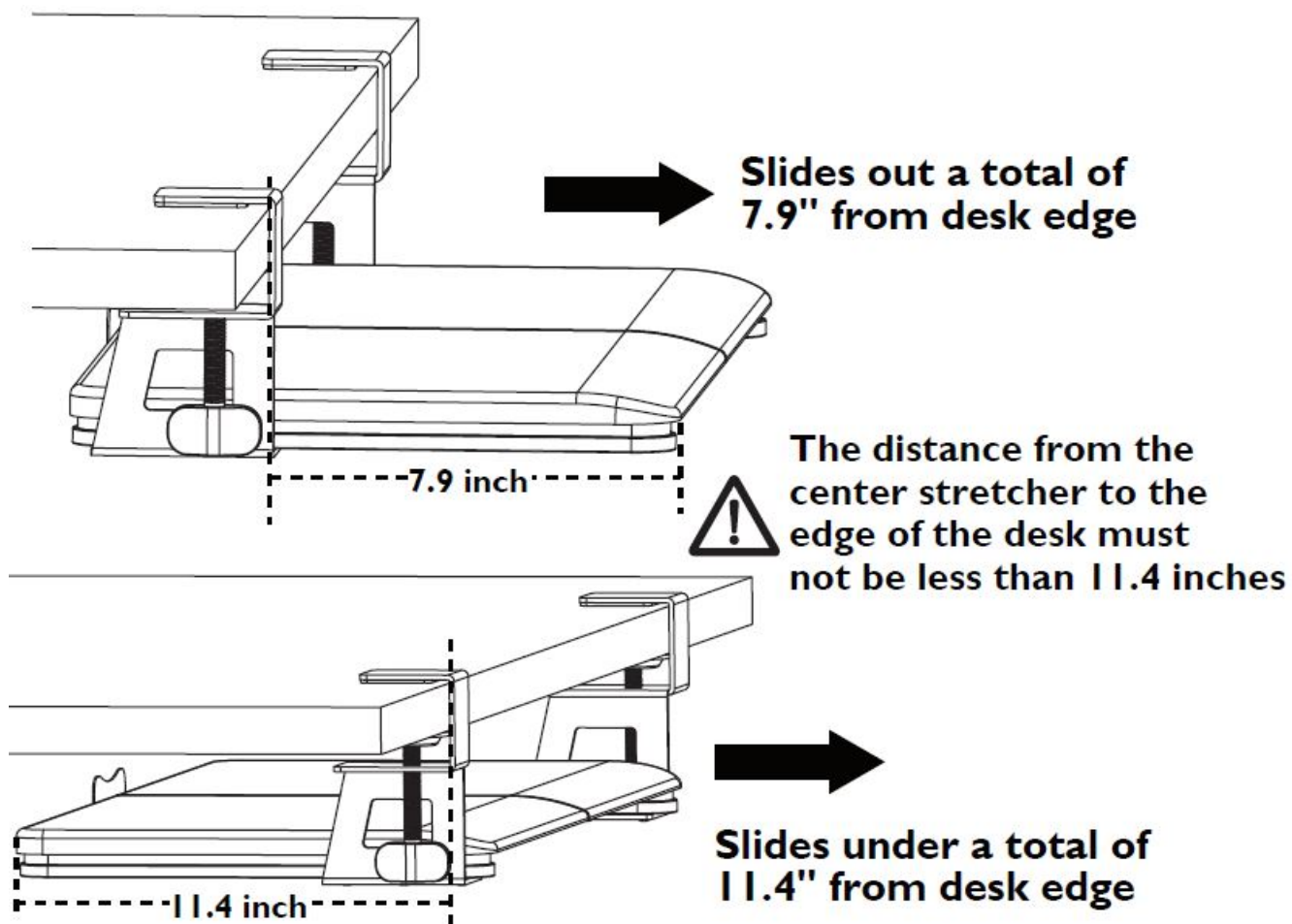
- Place the assembled keyboard tray on the edge of the table and tighten the clamp.

## Dimension

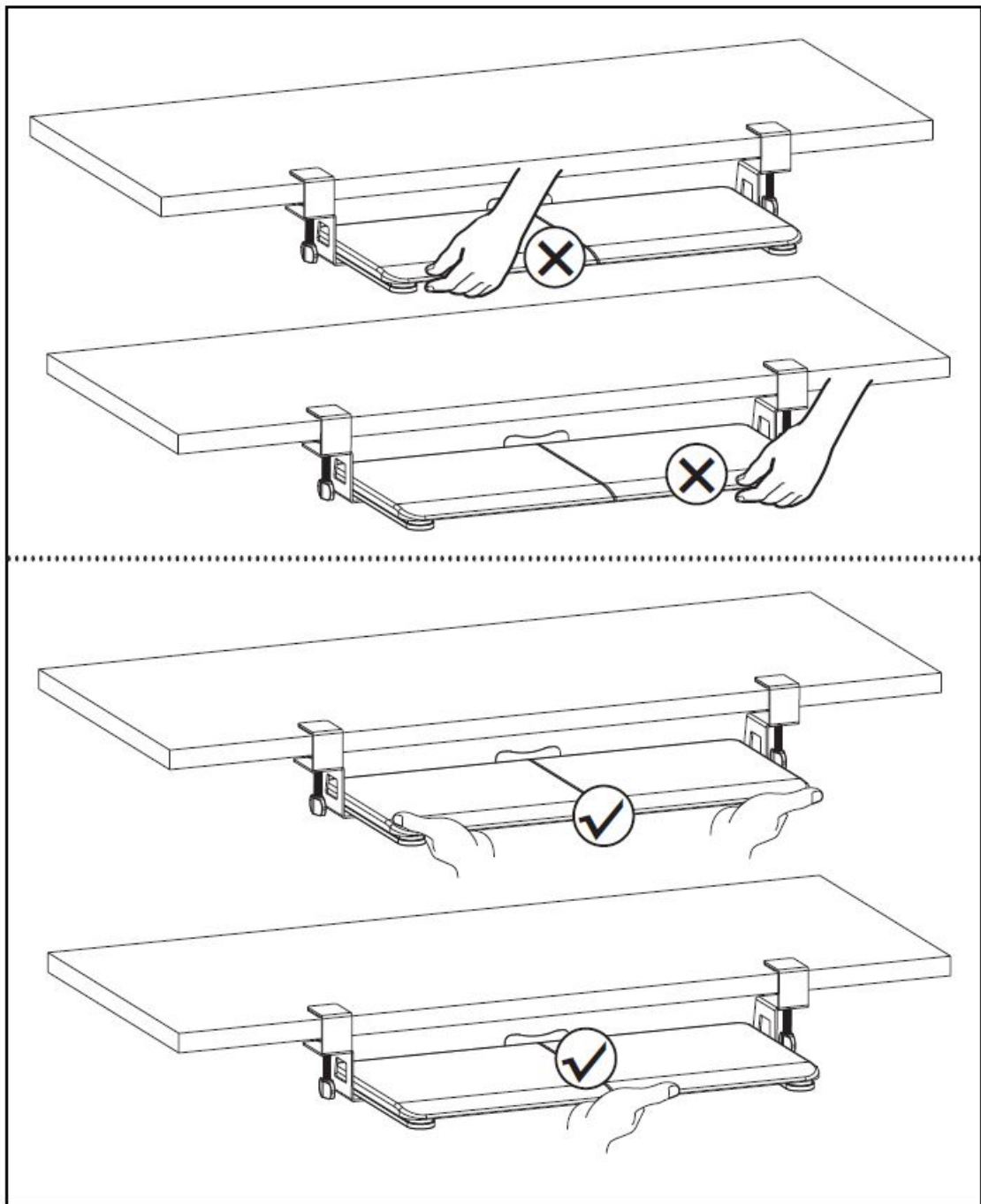


DESKTOP THICKNESS	0.5"	0.75"	1"	1.25"	1.5"	1.57"
HEIGHT CLEARANCE	3.2"	2.95"	2.7"	2.45"	2.2"	2.13"

**Warning:** Please make sure that your desk surface does not exceed a thickness of 1.57 inch.



• STEP 5



- Correct Usage Methods

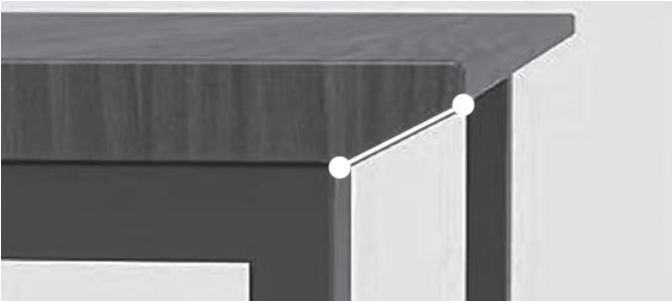
## Desktop Types

### Incompatible Desktop Types





1. Arc, special-shaped desk cannot be installed
2. Desk with aprons cannot be installed.




3. The edge of the desktop has a slope and cannot be installed
4. Tables with drawers cannot be installed



5. Do not install on the table with raised edges
6. The edge of the desktop is rounded and cannot be installed

**Maximum load capacity: 11 lbs**

## Documents / Resources

 <p><b>BONTEC</b> Black Clamp on Keyboard Tray Instruction Manual MODEL: KMT01-PJ Maximum load capacity: 11 lbs</p>	<p><a href="#">BONTEC KMT01-PJ Small Keyboard Tray Under Desk</a> [pdf] Instruction Manual KMT01-PJ Small Keyboard Tray Under Desk, KMT01-PJ, Small Keyboard Tray Under Desk, Keyboard Tray Under Desk, Tray Under Desk, Under Desk</p>
--	---

## References

- [User Manual](#)

[Manuals+](#), [Privacy Policy](#)

This website is an independent publication and is neither affiliated with nor endorsed by any of the trademark owners. The "Bluetooth®" word mark and logos are registered trademarks owned by Bluetooth SIG, Inc. The "Wi-Fi®" word mark and logos are registered trademarks owned by the Wi-Fi Alliance. Any use of these marks on this website does not imply any affiliation with or endorsement.